

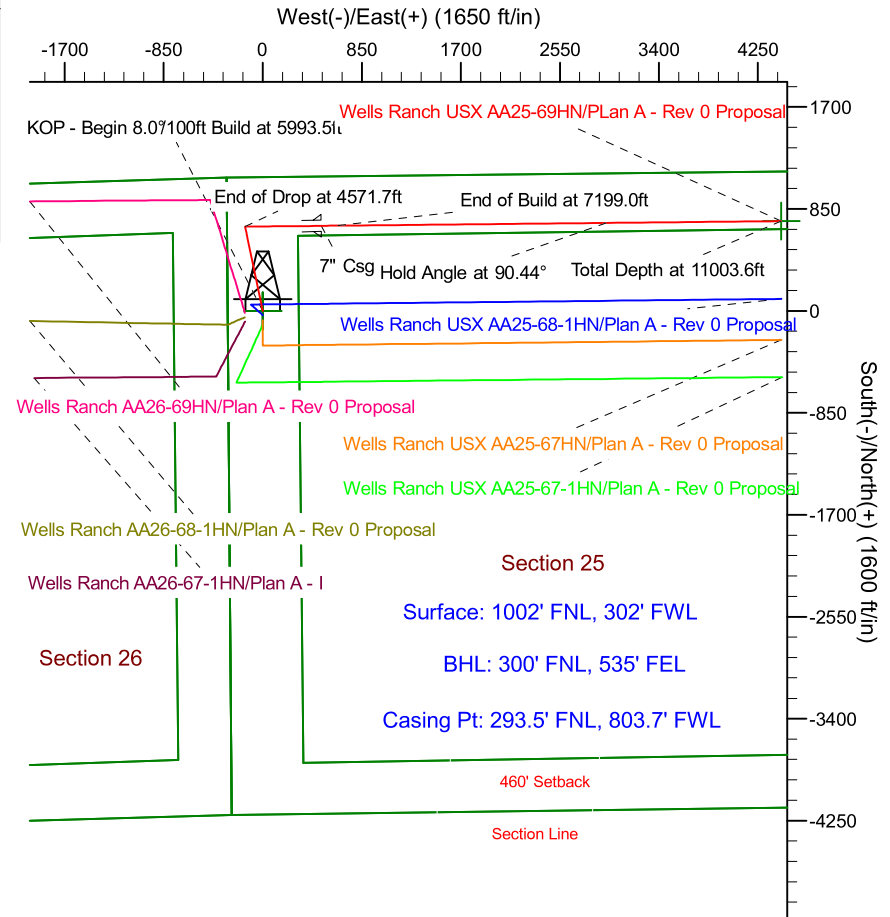
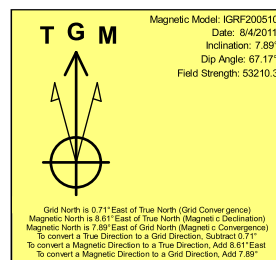
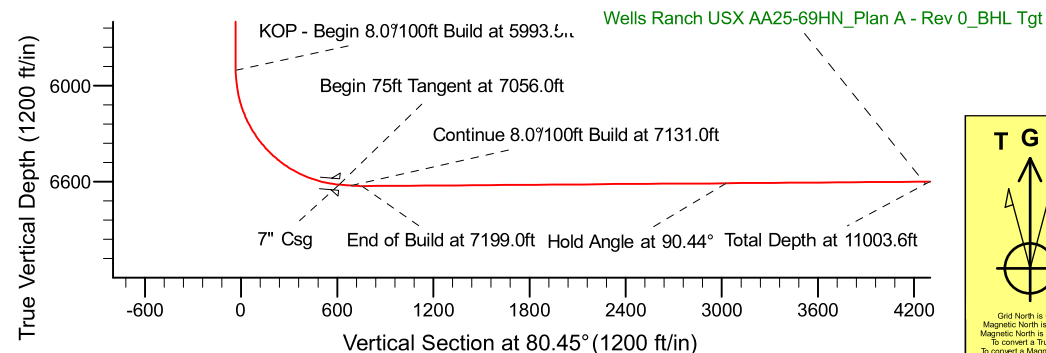
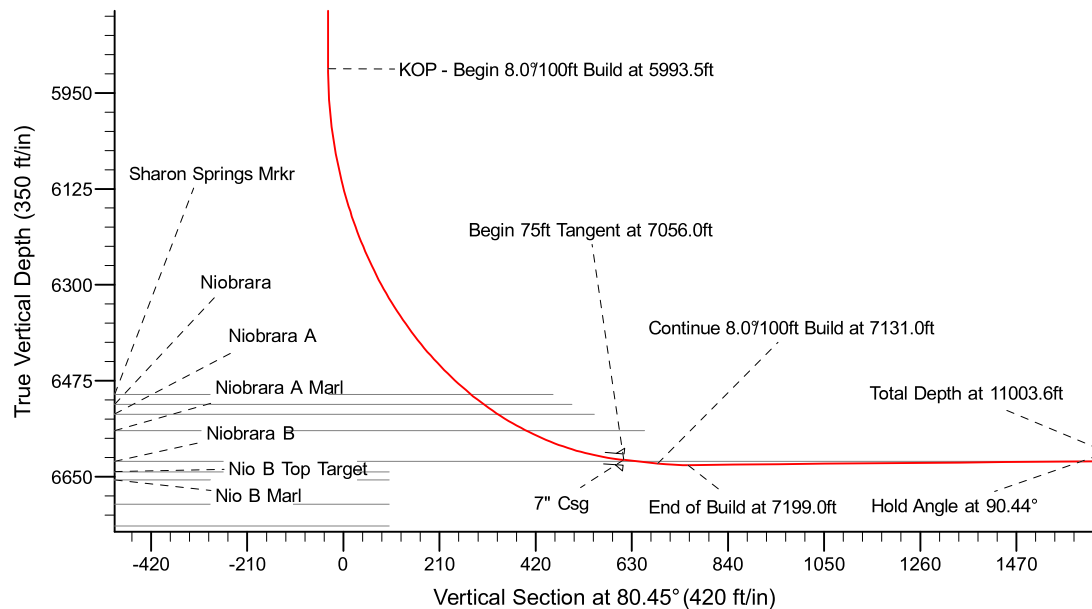
Project: Weld County Colorado (NAD 83)  
 Site: Sec.25, T6N, R63W  
 Well: Wells Ranch USX AA25-69HN  
 Wellbore: Plan A - Rev 0 (PERMITTING PLAN ONLY)  
 Design: Plan A - Rev 0 Proposal

# Noble Energy

**HALLIBURTON**  
 Sperry Drilling

## SECTION DETAILS

Sec	MD	Inc	Azi	TVD	+N/-S	+E/-W	Dleg	TFace	VSec	Target
1	0.0	0.00	0.00	0.0	0.0	0.0	0.00	0.00	0.0	
2	1200.0	0.00	0.00	1200.0	0.0	0.0	0.00	0.00	0.0	
3	1800.0	15.00	347.78	1793.2	76.3	-16.5	2.50	347.78	-3.6	
4	3971.6	15.00	347.78	3890.8	625.7	-135.5	0.00	0.00	-29.8	
5	4571.7	0.00	0.00	4484.0	702.0	-152.0	2.50	180.00	-33.5	
6	5993.5	0.00	0.00	5905.8	702.0	-152.0	0.00	0.00	-33.5	
7	7056.0	85.00	89.43	6619.3	708.5	501.7	8.00	89.43	612.3	
8	7131.0	85.00	89.43	6625.8	709.2	576.5	0.00	0.00	686.1	
9	7199.0	90.44	89.43	6628.6	709.9	644.4	8.00	0.00	753.2	
10	11003.6	90.44	89.42	6599.4	748.2	4448.7	0.00	-93.84	4511.2	Wells Ranch USX AA25-69HN_Plan A - Rev 0_BHL Tgt-



WELL DETAILS: Wells Ranch USX AA25-69HN(NAD83 Geodetic System)

Ground Level: 4815.0  
 Northing: 430702.81 Easting: 1008241.88 Latitude: 40° 27' 43.164 N Longitude: 104° 23' 36.708 W

Plan: Plan A - Rev 0 Proposal (Wells Ranch USX AA25-69HN/Plan A - Rev 0 (PERMITTING PLAN ONLY))

Created By: Erasmo Mendoza Date: 10:19, August 08 2011

**OK to submit with 2A as per Noble Drilling**  
**8/9/2011 10:49**