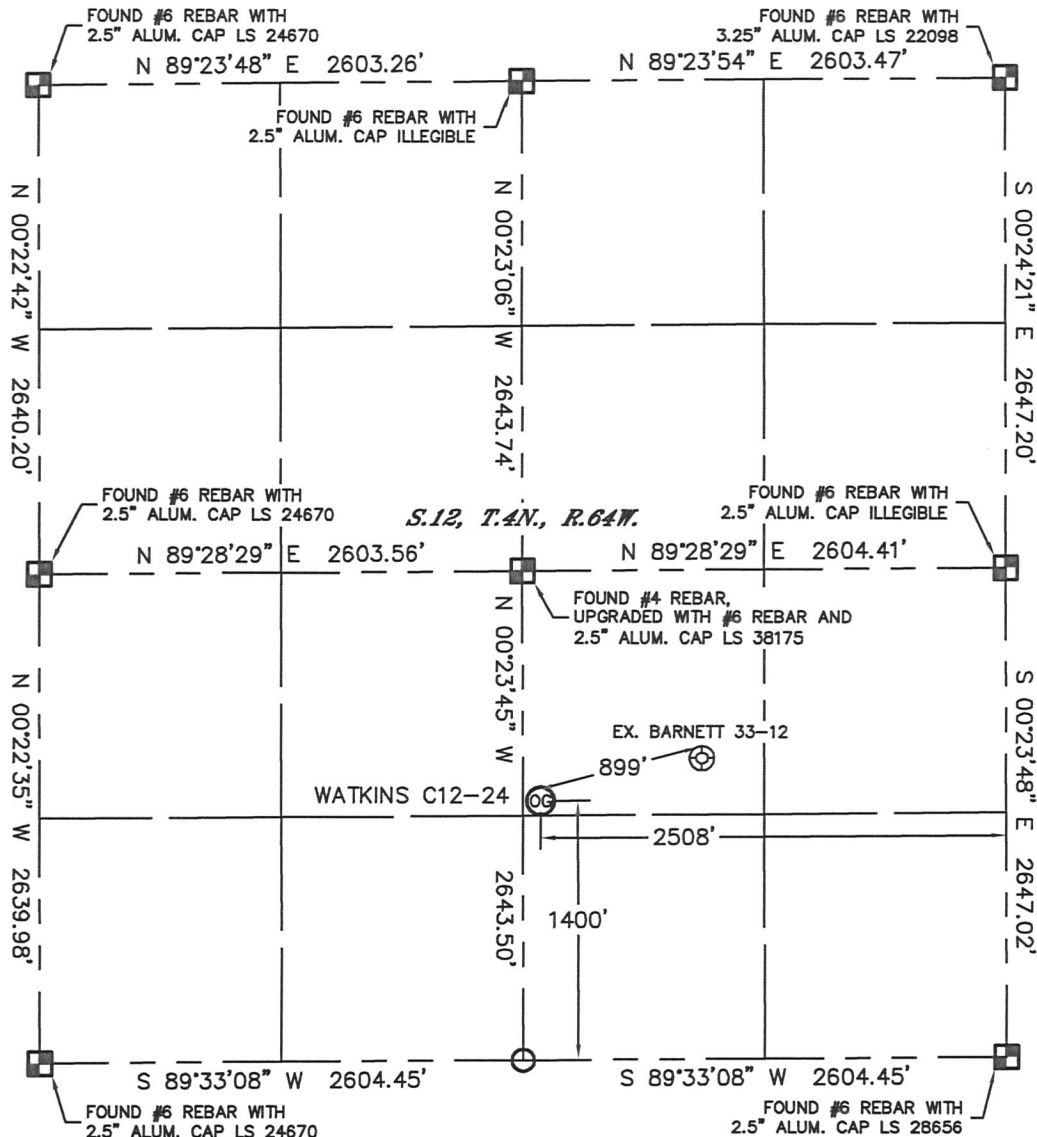


Lat40°, Inc. 1635 Foxtrail Drive, Suite 325 Loveland, CO 970-776-3321

WELL LOCATION CERTIFICATE

THIS MAP DOES NOT REPRESENT A BOUNDARY SURVEY

SECTION: 12
TOWNSHIP: 4N
RANGE: 64W



In accordance with a request from Mike Rodine with Noble Energy Inc. Lat40°, Inc. has determined the surface location of the WATKINS C12-24 to be 1400' from the SOUTH line and 2508' from the EAST line as measured at right angles from the section lines of Section 12, Township 4 North, Range 64 West of the Sixth Principal Meridian, County of Weld, State of Colorado.

I hereby state that this Well Location Certificate was prepared by me, or under my direct supervision, that the fieldwork was completed on 7/6/11, for and on behalf of Noble Energy Inc. That this is not a Land Survey Plat or an Improvement Survey Plat, and that it is not to be relied upon for establishment of fence, building, or other future improvement lines.

NOTE:

- 1) Bearings shown are Grid Bearings of the Colorado State Plane Coordinate System, North Zone, North American Datum 1983/2007. The lineal dimensions as contained herein are based upon the "U.S. Survey Foot."
- 2) Ground elevations are based on an observed GPS elevation (NAVD 1988 DATUM).
- 3) NEAREST EXISTING WELL: BARNETT 33-12, 899'
- 4) IMPROVEMENTS: See LOCATION DRAWING for all visible improvements within 400' of disturbed area.
- 5) SURFACE USE: CROP FIELD
- 6) INSTRUMENT OPERATOR: ADAM KELLY

NOTE

According to Colorado law, you must commence any legal action based upon any defect in this W.L.C. within three years after you discover such defect. In no event, may any action based upon any defect in this survey be commenced more than ten years after the date of the certificate shown hereon. (13-80-105 C.R.S.)

LEGEND

- = ALIQUOT MONUMENT AS DESCRIBED
- = CALCULATED POSITION

SURFACE LOCATION

LATITUDE: 40.32350°N
LONGITUDE: 104.49864°W
PDOP: 3.6
ELEV: 4627'
1/4, 1/4: NW1/4SE1/4
NEAREST PROPERTY LINE: 96' WEST



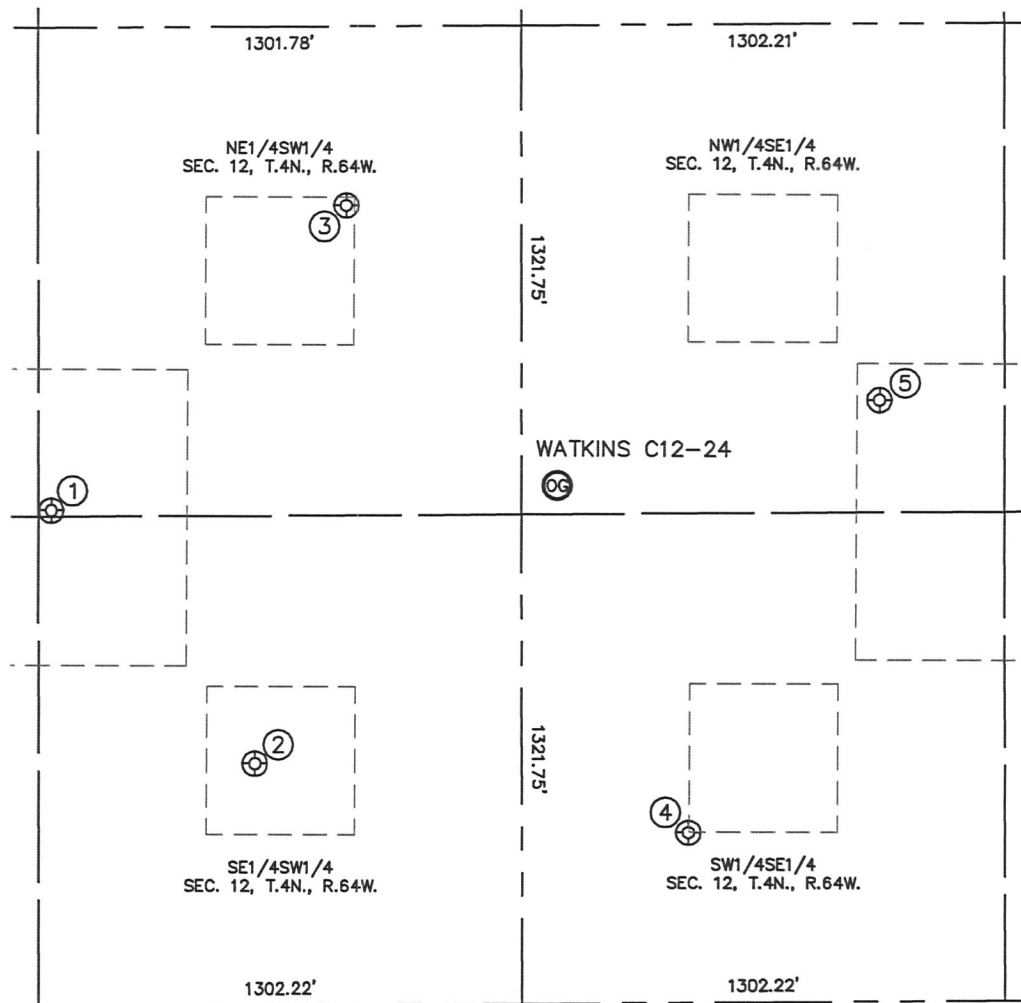
Brian T. Brinkman—On behalf of Lat40°, Inc.
Colorado Licensed Professional
Land Surveyor No. 38175 PROJECT#: 2011151

Lat40°, Inc. 1635 Foxtrail Drive, Suite 325 Loveland, CO 970-776-3321

SITE SKETCH

WATKINS C12-24

SECTION: 12
TOWNSHIP: 4N
RANGE: 64W



①

SATER C12-25
NE1/4SW1/4
1338' FSL
1337' FWL
LAT-40.32334°N
LONG-104.50353°W
PDOP: 1.2
ELEV: 4628'

②

WATKINS 12-1
SE1/4SW1/4
654' FSL
1885' FWL
LAT-40.32146°N
LONG-104.50157°W
PDOP: 2.7
ELEV: 4629'

③

WATKINS 12-11
NE1/4SW1/4
2158' FSL
2132' FWL
LAT-40.32559°N
LONG-104.50066°W
PDOP: 2.4
ELEV: 4625'

④

EXCO-WATKINS 12-34
SW1/4SE1/4
460' FSL
2156' FEL
LAT-40.32092°N
LONG-104.49739°W
PDOP: 2.2
ELEV: 4627'

⑤

BARNETT 33-12
NW1/4SE1/4
1626' FSL
1639' FEL
LAT-40.32411°N
LONG-104.49551°W
PDOP: 1.6
ELEV: 4638'

