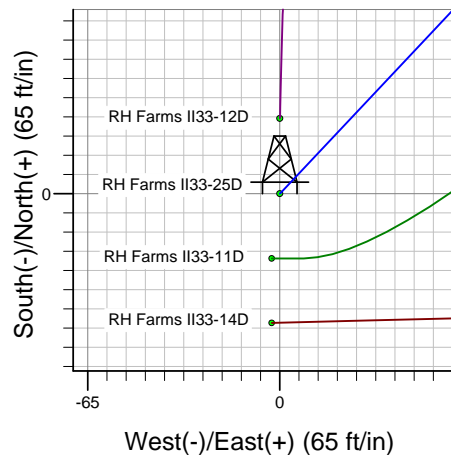
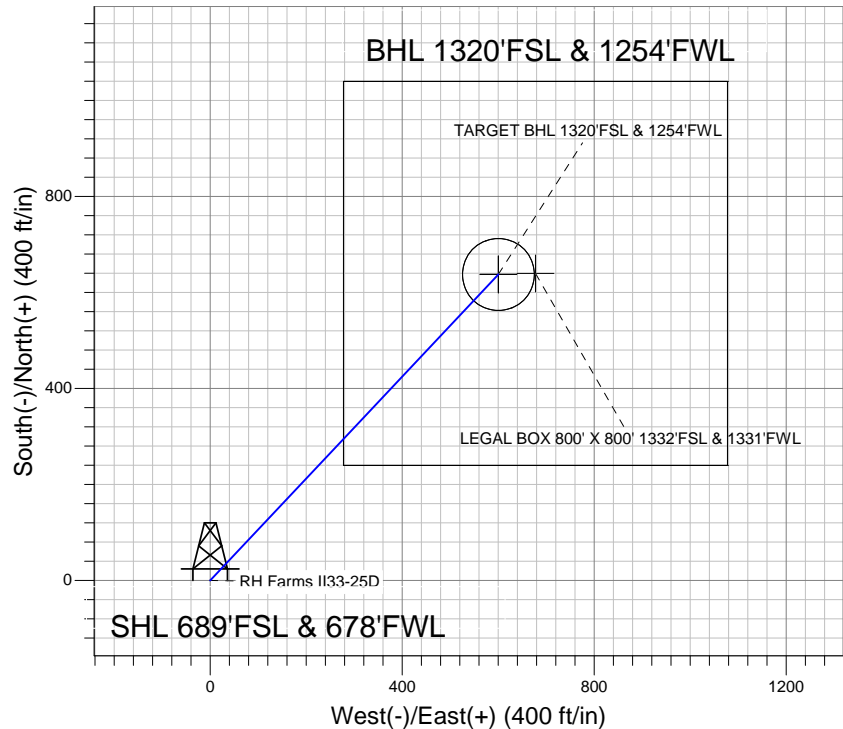
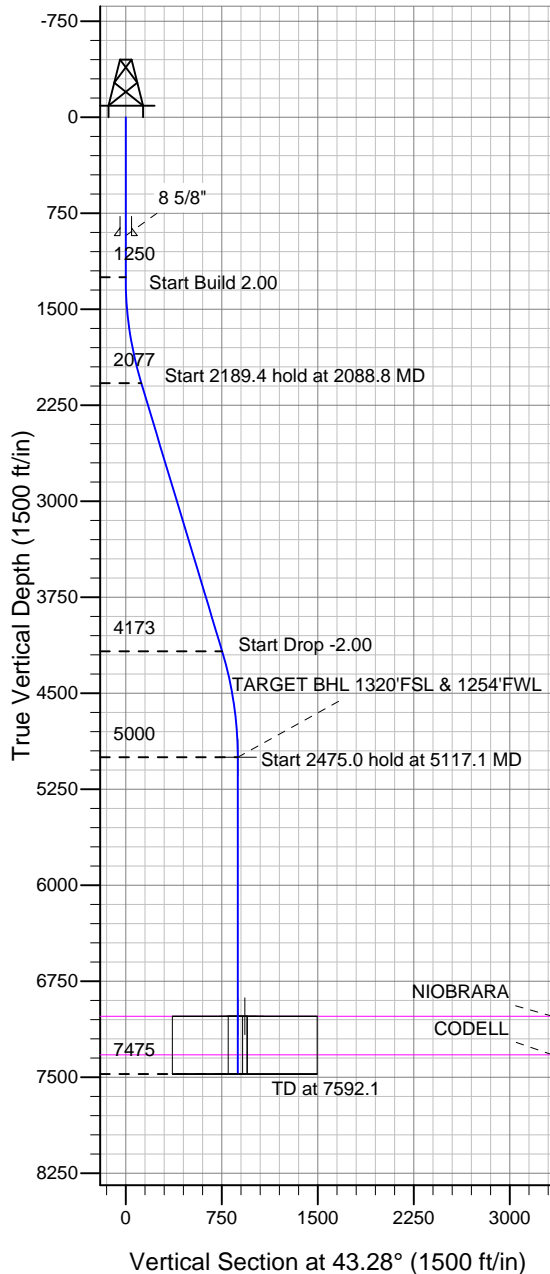


Well Name: RH Farms II33-25D

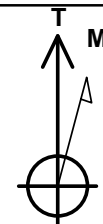
Surface Location: RH Farms II33-12D Pad Sec.33-T7N-R66W
North American Datum 1983, US State Plane 1983 Colorado Northern Zone
Ground Elevation: 4865.0

+N/-S	+E/-W	Northing	Easting	Latitude	Longitude	Slot
0.0	0.0	1435154.57	3196956.50	40.525740	-104.791500	
Original Well EleWELL @ 4878.0ft (Original Well Elev)						

NOBLE ENERGY INC WELD COUNTY CO



RH Farms II33-12D Pad Sec.33-T7N-R66W
RH Farms II33-25D
Noble RH Farms II33-25D Plan #1 (9-06-11)
8:49, September 12 2011



Azimuths to True North
Magnetic North: 8.86°
Magnetic Field
Strength: 53170.1snT
Dip Angle: 67.14°
Date: 9/6/2011
Model: IGRF2010

WELLBORE TARGET DETAILS (LAT/LONG)

Name	TVD	+N/-S	+E/-W	Latitude	Longitude	Shape
TARGET BHL 1320'FSL & 1254'FWL	5000.0	637.6	600.5	40.527490	-104.789340	Point
LEGAL BOX 800' X 800' 1332'FSL & 1331'FWL	7024.0	639.6	677.5	40.527496	-104.789063	Rectangle (Sides: L800.0 W800.0)
TARGET CIRCLE 1320'FSL & 1254'FWL	7024.0	637.6	600.5	40.527490	-104.789340	Circle (Radius: 75.0)

SECTION DETAILS

Sec	MD	Inc	Azi	TVD	+N/-S	+E/-W	DLeg	TFace	VSec	Target
1	0.0	0.00	0.00	0.0	0.0	0.0	0.00	0.00	0.0	
2	1250.0	0.00	0.00	1250.0	0.0	0.0	0.00	0.00	0.0	
3	2088.8	16.78	43.28	2076.9	88.8	83.6	2.00	43.28	121.9	
4	4278.2	16.78	43.28	4173.1	548.8	516.9	0.00	0.00	753.9	
5	5117.1	0.00	0.00	5000.0	637.6	600.5	2.00	180.00	875.8	TARGET BHL 1320'FSL & 1254'FWL
6	7592.1	0.00	0.00	7475.0	637.6	600.5	0.00	0.00	875.8	



Directional

NOBLE ENERGY INC WELD COUNTY CO

SEC.33-T7N-R66W

RH Farms II33-12D Pad Sec.33-T7N-R66W

RH Farms II33-25D

Wellbore #1

Plan: Noble RH Farms II33-25D Plan #1 (9-06-11)

Standard Planning Report

12 September, 2011



Database:	Landmark	Local Co-ordinate Reference:	Well RH Farms II33-25D
Company:	NOBLE ENERGY INC WELD COUNTY CO	TVD Reference:	WELL @ 4878.0ft (Original Well Elev)
Project:	SEC.33-T7N-R66W	MD Reference:	WELL @ 4878.0ft (Original Well Elev)
Site:	RH Farms II33-12D Pad Sec.33-T7N-R66W	North Reference:	True
Well:	RH Farms II33-25D	Survey Calculation Method:	Minimum Curvature
Wellbore:	Wellbore #1		
Design:	Noble RH Farms II33-25D Plan #1 (9-06-11)		

Project	SEC.33-T7N-R66W, Weld County, CO		
Map System:	US State Plane 1983	System Datum:	Mean Sea Level
Geo Datum:	North American Datum 1983		Using Well Reference Point
Map Zone:	Colorado Northern Zone		Using geodetic scale factor

Site						RH Farms II33-12D Pad Sec.33-T7N-R66W											
Site Position:						Northing:			1,435,180.08 ft			Latitude:			40.525810		
From:			Lat/Long			Easting:			3,196,956.29 ft			Longitude:			-104.791500		
Position Uncertainty:			0.0 ft			Slot Radius:			"			Grid Convergence:			0.46 °		

Well	RH Farms II33-25D					
Well Position	+N/-S	-25.5 ft	Northing:	1,435,154.57 ft	Latitude:	40.525740
	+E/-W	0.0 ft	Easting:	3,196,956.50 ft	Longitude:	-104.791500
Position Uncertainty		0.0 ft	Wellhead Elevation:	ft	Ground Level:	4,865.0 ft

Wellbore	Wellbore #1				
Magnetics	Model Name	Sample Date	Declination (°)	Dip Angle (°)	Field Strength (nT)
	IGRF2010	9/6/2011	8.86	67.14	53,170

Design	Noble RH Farms II33-25D Plan #1 (9-06-11)			
Audit Notes:				
Version:	Phase:	PROTOTYPE	Tie On Depth:	0.0
Vertical Section:	Depth From (TVD) (ft)	+N/-S (ft)	+E/-W (ft)	Direction (°)
	0.0	0.0	0.0	43.28

Plan Sections										
Measured Depth (ft)	Inclination (°)	Azimuth (°)	Vertical Depth (ft)	+N/-S (ft)	+E/-W (ft)	Dogleg Rate (°/100ft)	Build Rate (°/100ft)	Turn Rate (°/100ft)	TFO (°)	Target
0.0	0.00	0.00	0.0	0.0	0.0	0.00	0.00	0.00	0.00	
1,250.0	0.00	0.00	1,250.0	0.0	0.0	0.00	0.00	0.00	0.00	
2,088.8	16.78	43.28	2,076.9	88.8	83.6	2.00	2.00	0.00	43.28	
4,278.2	16.78	43.28	4,173.1	548.8	516.9	0.00	0.00	0.00	0.00	
5,117.1	0.00	0.00	5,000.0	637.6	600.5	2.00	-2.00	0.00	180.00	TARGET BHL 132C
7,592.1	0.00	0.00	7,475.0	637.6	600.5	0.00	0.00	0.00	0.00	

Database:	Landmark	Local Co-ordinate Reference:	Well RH Farms II33-25D
Company:	NOBLE ENERGY INC WELD COUNTY CO	TVD Reference:	WELL @ 4878.0ft (Original Well Elev)
Project:	SEC.33-T7N-R66W	MD Reference:	WELL @ 4878.0ft (Original Well Elev)
Site:	RH Farms II33-12D Pad Sec.33-T7N-R66W	North Reference:	True
Well:	RH Farms II33-25D	Survey Calculation Method:	Minimum Curvature
Wellbore:	Wellbore #1		
Design:	Noble RH Farms II33-25D Plan #1 (9-06-11)		

Planned Survey									
Measured Depth (ft)	Inclination (°)	Azimuth (°)	Vertical Depth (ft)	+N/-S (ft)	+E/-W (ft)	Vertical Section (ft)	Dogleg Rate (°/100ft)	Build Rate (°/100ft)	Turn Rate (°/100ft)
0.0	0.00	0.00	0.0	0.0	0.0	0.0	0.00	0.00	0.00
40.0	0.00	0.00	40.0	0.0	0.0	0.0	0.00	0.00	0.00
80.0	0.00	0.00	80.0	0.0	0.0	0.0	0.00	0.00	0.00
120.0	0.00	0.00	120.0	0.0	0.0	0.0	0.00	0.00	0.00
160.0	0.00	0.00	160.0	0.0	0.0	0.0	0.00	0.00	0.00
200.0	0.00	0.00	200.0	0.0	0.0	0.0	0.00	0.00	0.00
240.0	0.00	0.00	240.0	0.0	0.0	0.0	0.00	0.00	0.00
280.0	0.00	0.00	280.0	0.0	0.0	0.0	0.00	0.00	0.00
320.0	0.00	0.00	320.0	0.0	0.0	0.0	0.00	0.00	0.00
360.0	0.00	0.00	360.0	0.0	0.0	0.0	0.00	0.00	0.00
400.0	0.00	0.00	400.0	0.0	0.0	0.0	0.00	0.00	0.00
440.0	0.00	0.00	440.0	0.0	0.0	0.0	0.00	0.00	0.00
480.0	0.00	0.00	480.0	0.0	0.0	0.0	0.00	0.00	0.00
520.0	0.00	0.00	520.0	0.0	0.0	0.0	0.00	0.00	0.00
560.0	0.00	0.00	560.0	0.0	0.0	0.0	0.00	0.00	0.00
600.0	0.00	0.00	600.0	0.0	0.0	0.0	0.00	0.00	0.00
640.0	0.00	0.00	640.0	0.0	0.0	0.0	0.00	0.00	0.00
680.0	0.00	0.00	680.0	0.0	0.0	0.0	0.00	0.00	0.00
720.0	0.00	0.00	720.0	0.0	0.0	0.0	0.00	0.00	0.00
760.0	0.00	0.00	760.0	0.0	0.0	0.0	0.00	0.00	0.00
800.0	0.00	0.00	800.0	0.0	0.0	0.0	0.00	0.00	0.00
840.0	0.00	0.00	840.0	0.0	0.0	0.0	0.00	0.00	0.00
880.0	0.00	0.00	880.0	0.0	0.0	0.0	0.00	0.00	0.00
920.0	0.00	0.00	920.0	0.0	0.0	0.0	0.00	0.00	0.00
925.0	0.00	0.00	925.0	0.0	0.0	0.0	0.00	0.00	0.00
8 5/8"									
960.0	0.00	0.00	960.0	0.0	0.0	0.0	0.00	0.00	0.00
1,000.0	0.00	0.00	1,000.0	0.0	0.0	0.0	0.00	0.00	0.00
1,040.0	0.00	0.00	1,040.0	0.0	0.0	0.0	0.00	0.00	0.00
1,080.0	0.00	0.00	1,080.0	0.0	0.0	0.0	0.00	0.00	0.00
1,120.0	0.00	0.00	1,120.0	0.0	0.0	0.0	0.00	0.00	0.00
1,160.0	0.00	0.00	1,160.0	0.0	0.0	0.0	0.00	0.00	0.00
1,200.0	0.00	0.00	1,200.0	0.0	0.0	0.0	0.00	0.00	0.00
1,240.0	0.00	0.00	1,240.0	0.0	0.0	0.0	0.00	0.00	0.00
1,250.0	0.00	0.00	1,250.0	0.0	0.0	0.0	0.00	0.00	0.00
1,280.0	0.60	43.28	1,280.0	0.1	0.1	0.2	2.00	2.00	0.00
1,320.0	1.40	43.28	1,320.0	0.6	0.6	0.9	2.00	2.00	0.00
1,360.0	2.20	43.28	1,360.0	1.5	1.4	2.1	2.00	2.00	0.00
1,400.0	3.00	43.28	1,399.9	2.9	2.7	3.9	2.00	2.00	0.00
1,440.0	3.80	43.28	1,439.9	4.6	4.3	6.3	2.00	2.00	0.00
1,480.0	4.60	43.28	1,479.8	6.7	6.3	9.2	2.00	2.00	0.00
1,520.0	5.40	43.28	1,519.6	9.3	8.7	12.7	2.00	2.00	0.00
1,560.0	6.20	43.28	1,559.4	12.2	11.5	16.8	2.00	2.00	0.00
1,600.0	7.00	43.28	1,599.1	15.5	14.6	21.4	2.00	2.00	0.00
1,640.0	7.80	43.28	1,638.8	19.3	18.2	26.5	2.00	2.00	0.00
1,680.0	8.60	43.28	1,678.4	23.4	22.1	32.2	2.00	2.00	0.00
1,720.0	9.40	43.28	1,717.9	28.0	26.4	38.5	2.00	2.00	0.00
1,760.0	10.20	43.28	1,757.3	33.0	31.0	45.3	2.00	2.00	0.00
1,800.0	11.00	43.28	1,796.6	38.3	36.1	52.6	2.00	2.00	0.00
1,840.0	11.80	43.28	1,835.8	44.1	41.5	60.5	2.00	2.00	0.00
1,880.0	12.60	43.28	1,874.9	50.2	47.3	69.0	2.00	2.00	0.00
1,920.0	13.40	43.28	1,913.9	56.8	53.5	78.0	2.00	2.00	0.00
1,960.0	14.20	43.28	1,952.8	63.7	60.0	87.5	2.00	2.00	0.00
2,000.0	15.00	43.28	1,991.5	71.1	66.9	97.6	2.00	2.00	0.00

Database:	Landmark	Local Co-ordinate Reference:	Well RH Farms II33-25D
Company:	NOBLE ENERGY INC WELD COUNTY CO	TVD Reference:	WELL @ 4878.0ft (Original Well Elev)
Project:	SEC.33-T7N-R66W	MD Reference:	WELL @ 4878.0ft (Original Well Elev)
Site:	RH Farms II33-12D Pad Sec.33-T7N-R66W	North Reference:	True
Well:	RH Farms II33-25D	Survey Calculation Method:	Minimum Curvature
Wellbore:	Wellbore #1		
Design:	Noble RH Farms II33-25D Plan #1 (9-06-11)		

Planned Survey									
Measured Depth (ft)	Inclination (°)	Azimuth (°)	Vertical Depth (ft)	+N/-S (ft)	+E/-W (ft)	Vertical Section (ft)	Dogleg Rate (°/100ft)	Build Rate (°/100ft)	Turn Rate (°/100ft)
2,040.0	15.80	43.28	2,030.0	78.8	74.2	108.2	2.00	2.00	0.00
2,080.0	16.60	43.28	2,068.4	86.9	81.9	119.4	2.00	2.00	0.00
2,088.8	16.78	43.28	2,076.9	88.8	83.6	121.9	2.00	2.00	0.00
2,120.0	16.78	43.28	2,106.7	95.3	89.8	130.9	0.00	0.00	0.00
2,160.0	16.78	43.28	2,145.0	103.7	97.7	142.5	0.00	0.00	0.00
2,200.0	16.78	43.28	2,183.3	112.1	105.6	154.0	0.00	0.00	0.00
2,240.0	16.78	43.28	2,221.6	120.5	113.5	165.6	0.00	0.00	0.00
2,280.0	16.78	43.28	2,259.9	128.9	121.4	177.1	0.00	0.00	0.00
2,320.0	16.78	43.28	2,298.2	137.3	129.3	188.7	0.00	0.00	0.00
2,360.0	16.78	43.28	2,336.5	145.7	137.3	200.2	0.00	0.00	0.00
2,400.0	16.78	43.28	2,374.8	154.1	145.2	211.8	0.00	0.00	0.00
2,440.0	16.78	43.28	2,413.1	162.6	153.1	223.3	0.00	0.00	0.00
2,480.0	16.78	43.28	2,451.4	171.0	161.0	234.8	0.00	0.00	0.00
2,520.0	16.78	43.28	2,489.7	179.4	168.9	246.4	0.00	0.00	0.00
2,560.0	16.78	43.28	2,528.0	187.8	176.8	257.9	0.00	0.00	0.00
2,600.0	16.78	43.28	2,566.3	196.2	184.8	269.5	0.00	0.00	0.00
2,640.0	16.78	43.28	2,604.6	204.6	192.7	281.0	0.00	0.00	0.00
2,680.0	16.78	43.28	2,642.9	213.0	200.6	292.6	0.00	0.00	0.00
2,720.0	16.78	43.28	2,681.2	221.4	208.5	304.1	0.00	0.00	0.00
2,760.0	16.78	43.28	2,719.5	229.8	216.4	315.7	0.00	0.00	0.00
2,800.0	16.78	43.28	2,757.8	238.2	224.3	327.2	0.00	0.00	0.00
2,840.0	16.78	43.28	2,796.1	246.6	232.3	338.8	0.00	0.00	0.00
2,880.0	16.78	43.28	2,834.4	255.0	240.2	350.3	0.00	0.00	0.00
2,920.0	16.78	43.28	2,872.7	263.4	248.1	361.8	0.00	0.00	0.00
2,960.0	16.78	43.28	2,911.0	271.8	256.0	373.4	0.00	0.00	0.00
3,000.0	16.78	43.28	2,949.3	280.2	263.9	384.9	0.00	0.00	0.00
3,040.0	16.78	43.28	2,987.6	288.6	271.8	396.5	0.00	0.00	0.00
3,080.0	16.78	43.28	3,025.9	297.0	279.7	408.0	0.00	0.00	0.00
3,120.0	16.78	43.28	3,064.2	305.4	287.7	419.6	0.00	0.00	0.00
3,160.0	16.78	43.28	3,102.5	313.8	295.6	431.1	0.00	0.00	0.00
3,200.0	16.78	43.28	3,140.8	322.3	303.5	442.7	0.00	0.00	0.00
3,240.0	16.78	43.28	3,179.1	330.7	311.4	454.2	0.00	0.00	0.00
3,280.0	16.78	43.28	3,217.4	339.1	319.3	465.8	0.00	0.00	0.00
3,320.0	16.78	43.28	3,255.7	347.5	327.2	477.3	0.00	0.00	0.00
3,360.0	16.78	43.28	3,294.0	355.9	335.2	488.9	0.00	0.00	0.00
3,400.0	16.78	43.28	3,332.3	364.3	343.1	500.4	0.00	0.00	0.00
3,440.0	16.78	43.28	3,370.6	372.7	351.0	511.9	0.00	0.00	0.00
3,480.0	16.78	43.28	3,408.9	381.1	358.9	523.5	0.00	0.00	0.00
3,520.0	16.78	43.28	3,447.1	389.5	366.8	535.0	0.00	0.00	0.00
3,560.0	16.78	43.28	3,485.4	397.9	374.7	546.6	0.00	0.00	0.00
3,600.0	16.78	43.28	3,523.7	406.3	382.7	558.1	0.00	0.00	0.00
3,640.0	16.78	43.28	3,562.0	414.7	390.6	569.7	0.00	0.00	0.00
3,680.0	16.78	43.28	3,600.3	423.1	398.5	581.2	0.00	0.00	0.00
3,720.0	16.78	43.28	3,638.6	431.5	406.4	592.8	0.00	0.00	0.00
3,760.0	16.78	43.28	3,676.9	439.9	414.3	604.3	0.00	0.00	0.00
3,800.0	16.78	43.28	3,715.2	448.3	422.2	615.9	0.00	0.00	0.00
3,840.0	16.78	43.28	3,753.5	456.7	430.1	627.4	0.00	0.00	0.00
3,880.0	16.78	43.28	3,791.8	465.1	438.1	638.9	0.00	0.00	0.00
3,920.0	16.78	43.28	3,830.1	473.5	446.0	650.5	0.00	0.00	0.00
3,960.0	16.78	43.28	3,868.4	481.9	453.9	662.0	0.00	0.00	0.00
4,000.0	16.78	43.28	3,906.7	490.4	461.8	673.6	0.00	0.00	0.00
4,040.0	16.78	43.28	3,945.0	498.8	469.7	685.1	0.00	0.00	0.00
4,080.0	16.78	43.28	3,983.3	507.2	477.6	696.7	0.00	0.00	0.00
4,120.0	16.78	43.28	4,021.6	515.6	485.6	708.2	0.00	0.00	0.00

Database:	Landmark	Local Co-ordinate Reference:	Well RH Farms II33-25D
Company:	NOBLE ENERGY INC WELD COUNTY CO	TVD Reference:	WELL @ 4878.0ft (Original Well Elev)
Project:	SEC.33-T7N-R66W	MD Reference:	WELL @ 4878.0ft (Original Well Elev)
Site:	RH Farms II33-12D Pad Sec.33-T7N-R66W	North Reference:	True
Well:	RH Farms II33-25D	Survey Calculation Method:	Minimum Curvature
Wellbore:	Wellbore #1		
Design:	Noble RH Farms II33-25D Plan #1 (9-06-11)		

Planned Survey									
Measured Depth (ft)	Inclination (°)	Azimuth (°)	Vertical Depth (ft)	+N/-S (ft)	+E/-W (ft)	Vertical Section (ft)	Dogleg Rate (°/100ft)	Build Rate (°/100ft)	Turn Rate (°/100ft)
4,160.0	16.78	43.28	4,059.9	524.0	493.5	719.8	0.00	0.00	0.00
4,200.0	16.78	43.28	4,098.2	532.4	501.4	731.3	0.00	0.00	0.00
4,240.0	16.78	43.28	4,136.5	540.8	509.3	742.9	0.00	0.00	0.00
4,278.2	16.78	43.28	4,173.1	548.8	516.9	753.9	0.00	0.00	0.00
4,280.0	16.74	43.28	4,174.8	549.2	517.2	754.4	2.00	-2.00	0.00
4,320.0	15.94	43.28	4,213.2	557.4	524.9	765.7	2.00	-2.00	0.00
4,360.0	15.14	43.28	4,251.7	565.2	532.3	776.4	2.00	-2.00	0.00
4,400.0	14.34	43.28	4,290.4	572.6	539.3	786.6	2.00	-2.00	0.00
4,440.0	13.54	43.28	4,329.2	579.6	545.9	796.2	2.00	-2.00	0.00
4,480.0	12.74	43.28	4,368.2	586.2	552.1	805.3	2.00	-2.00	0.00
4,520.0	11.94	43.28	4,407.3	592.5	558.0	813.8	2.00	-2.00	0.00
4,560.0	11.14	43.28	4,446.4	598.3	563.5	821.8	2.00	-2.00	0.00
4,600.0	10.34	43.28	4,485.7	603.7	568.6	829.3	2.00	-2.00	0.00
4,640.0	9.54	43.28	4,525.1	608.7	573.3	836.2	2.00	-2.00	0.00
4,680.0	8.74	43.28	4,564.6	613.4	577.7	842.6	2.00	-2.00	0.00
4,720.0	7.94	43.28	4,604.2	617.6	581.6	848.4	2.00	-2.00	0.00
4,760.0	7.14	43.28	4,643.9	621.4	585.2	853.6	2.00	-2.00	0.00
4,800.0	6.34	43.28	4,683.6	624.8	588.5	858.3	2.00	-2.00	0.00
4,840.0	5.54	43.28	4,723.4	627.8	591.3	862.4	2.00	-2.00	0.00
4,880.0	4.74	43.28	4,763.2	630.4	593.8	866.0	2.00	-2.00	0.00
4,920.0	3.94	43.28	4,803.1	632.6	595.8	869.1	2.00	-2.00	0.00
4,960.0	3.14	43.28	4,843.0	634.4	597.5	871.5	2.00	-2.00	0.00
5,000.0	2.34	43.28	4,883.0	635.8	598.8	873.4	2.00	-2.00	0.00
5,040.0	1.54	43.28	4,922.9	636.8	599.8	874.8	2.00	-2.00	0.00
5,080.0	0.74	43.28	4,962.9	637.4	600.3	875.6	2.00	-2.00	0.00
5,117.1	0.00	0.00	5,000.0	637.6	600.5	875.8	2.00	-2.00	0.00
TARGET BHL 1320'FSL & 1254'FWL									
5,120.0	0.00	0.00	5,002.9	637.6	600.5	875.8	0.00	0.00	0.00
5,160.0	0.00	0.00	5,042.9	637.6	600.5	875.8	0.00	0.00	0.00
5,200.0	0.00	0.00	5,082.9	637.6	600.5	875.8	0.00	0.00	0.00
5,240.0	0.00	0.00	5,122.9	637.6	600.5	875.8	0.00	0.00	0.00
5,280.0	0.00	0.00	5,162.9	637.6	600.5	875.8	0.00	0.00	0.00
5,320.0	0.00	0.00	5,202.9	637.6	600.5	875.8	0.00	0.00	0.00
5,360.0	0.00	0.00	5,242.9	637.6	600.5	875.8	0.00	0.00	0.00
5,400.0	0.00	0.00	5,282.9	637.6	600.5	875.8	0.00	0.00	0.00
5,440.0	0.00	0.00	5,322.9	637.6	600.5	875.8	0.00	0.00	0.00
5,480.0	0.00	0.00	5,362.9	637.6	600.5	875.8	0.00	0.00	0.00
5,520.0	0.00	0.00	5,402.9	637.6	600.5	875.8	0.00	0.00	0.00
5,560.0	0.00	0.00	5,442.9	637.6	600.5	875.8	0.00	0.00	0.00
5,600.0	0.00	0.00	5,482.9	637.6	600.5	875.8	0.00	0.00	0.00
5,640.0	0.00	0.00	5,522.9	637.6	600.5	875.8	0.00	0.00	0.00
5,680.0	0.00	0.00	5,562.9	637.6	600.5	875.8	0.00	0.00	0.00
5,720.0	0.00	0.00	5,602.9	637.6	600.5	875.8	0.00	0.00	0.00
5,760.0	0.00	0.00	5,642.9	637.6	600.5	875.8	0.00	0.00	0.00
5,800.0	0.00	0.00	5,682.9	637.6	600.5	875.8	0.00	0.00	0.00
5,840.0	0.00	0.00	5,722.9	637.6	600.5	875.8	0.00	0.00	0.00
5,880.0	0.00	0.00	5,762.9	637.6	600.5	875.8	0.00	0.00	0.00
5,920.0	0.00	0.00	5,802.9	637.6	600.5	875.8	0.00	0.00	0.00
5,960.0	0.00	0.00	5,842.9	637.6	600.5	875.8	0.00	0.00	0.00
6,000.0	0.00	0.00	5,882.9	637.6	600.5	875.8	0.00	0.00	0.00
6,040.0	0.00	0.00	5,922.9	637.6	600.5	875.8	0.00	0.00	0.00
6,080.0	0.00	0.00	5,962.9	637.6	600.5	875.8	0.00	0.00	0.00
6,120.0	0.00	0.00	6,002.9	637.6	600.5	875.8	0.00	0.00	0.00
6,160.0	0.00	0.00	6,042.9	637.6	600.5	875.8	0.00	0.00	0.00

Database:	Landmark	Local Co-ordinate Reference:	Well RH Farms II33-25D
Company:	NOBLE ENERGY INC WELD COUNTY CO	TVD Reference:	WELL @ 4878.0ft (Original Well Elev)
Project:	SEC.33-T7N-R66W	MD Reference:	WELL @ 4878.0ft (Original Well Elev)
Site:	RH Farms II33-12D Pad Sec.33-T7N-R66W	North Reference:	True
Well:	RH Farms II33-25D	Survey Calculation Method:	Minimum Curvature
Wellbore:	Wellbore #1		
Design:	Noble RH Farms II33-25D Plan #1 (9-06-11)		

Planned Survey									
Measured Depth (ft)	Inclination (°)	Azimuth (°)	Vertical Depth (ft)	+N/-S (ft)	+E/-W (ft)	Vertical Section (ft)	Dogleg Rate (°/100ft)	Build Rate (°/100ft)	Turn Rate (°/100ft)
6,200.0	0.00	0.00	6,082.9	637.6	600.5	875.8	0.00	0.00	0.00
6,240.0	0.00	0.00	6,122.9	637.6	600.5	875.8	0.00	0.00	0.00
6,280.0	0.00	0.00	6,162.9	637.6	600.5	875.8	0.00	0.00	0.00
6,320.0	0.00	0.00	6,202.9	637.6	600.5	875.8	0.00	0.00	0.00
6,360.0	0.00	0.00	6,242.9	637.6	600.5	875.8	0.00	0.00	0.00
6,400.0	0.00	0.00	6,282.9	637.6	600.5	875.8	0.00	0.00	0.00
6,440.0	0.00	0.00	6,322.9	637.6	600.5	875.8	0.00	0.00	0.00
6,480.0	0.00	0.00	6,362.9	637.6	600.5	875.8	0.00	0.00	0.00
6,520.0	0.00	0.00	6,402.9	637.6	600.5	875.8	0.00	0.00	0.00
6,560.0	0.00	0.00	6,442.9	637.6	600.5	875.8	0.00	0.00	0.00
6,600.0	0.00	0.00	6,482.9	637.6	600.5	875.8	0.00	0.00	0.00
6,640.0	0.00	0.00	6,522.9	637.6	600.5	875.8	0.00	0.00	0.00
6,680.0	0.00	0.00	6,562.9	637.6	600.5	875.8	0.00	0.00	0.00
6,720.0	0.00	0.00	6,602.9	637.6	600.5	875.8	0.00	0.00	0.00
6,760.0	0.00	0.00	6,642.9	637.6	600.5	875.8	0.00	0.00	0.00
6,800.0	0.00	0.00	6,682.9	637.6	600.5	875.8	0.00	0.00	0.00
6,840.0	0.00	0.00	6,722.9	637.6	600.5	875.8	0.00	0.00	0.00
6,880.0	0.00	0.00	6,762.9	637.6	600.5	875.8	0.00	0.00	0.00
6,920.0	0.00	0.00	6,802.9	637.6	600.5	875.8	0.00	0.00	0.00
6,960.0	0.00	0.00	6,842.9	637.6	600.5	875.8	0.00	0.00	0.00
7,000.0	0.00	0.00	6,882.9	637.6	600.5	875.8	0.00	0.00	0.00
7,040.0	0.00	0.00	6,922.9	637.6	600.5	875.8	0.00	0.00	0.00
7,080.0	0.00	0.00	6,962.9	637.6	600.5	875.8	0.00	0.00	0.00
7,120.0	0.00	0.00	7,002.9	637.6	600.5	875.8	0.00	0.00	0.00
7,141.1	0.00	0.00	7,024.0	637.6	600.5	875.8	0.00	0.00	0.00
NOBRARA - LEGAL BOX 800' X 800' 1332'FSL & 1331'FWL - TARGET CIRCLE 1320'FSL & 1254'FWL									
7,160.0	0.00	0.00	7,042.9	637.6	600.5	875.8	0.00	0.00	0.00
7,200.0	0.00	0.00	7,082.9	637.6	600.5	875.8	0.00	0.00	0.00
7,240.0	0.00	0.00	7,122.9	637.6	600.5	875.8	0.00	0.00	0.00
7,280.0	0.00	0.00	7,162.9	637.6	600.5	875.8	0.00	0.00	0.00
7,320.0	0.00	0.00	7,202.9	637.6	600.5	875.8	0.00	0.00	0.00
7,360.0	0.00	0.00	7,242.9	637.6	600.5	875.8	0.00	0.00	0.00
7,400.0	0.00	0.00	7,282.9	637.6	600.5	875.8	0.00	0.00	0.00
7,440.0	0.00	0.00	7,322.9	637.6	600.5	875.8	0.00	0.00	0.00
7,442.1	0.00	0.00	7,325.0	637.6	600.5	875.8	0.00	0.00	0.00
CODELL									
7,480.0	0.00	0.00	7,362.9	637.6	600.5	875.8	0.00	0.00	0.00
7,520.0	0.00	0.00	7,402.9	637.6	600.5	875.8	0.00	0.00	0.00
7,560.0	0.00	0.00	7,442.9	637.6	600.5	875.8	0.00	0.00	0.00
7,592.1	0.00	0.00	7,475.0	637.6	600.5	875.8	0.00	0.00	0.00

Database:	Landmark	Local Co-ordinate Reference:	Well RH Farms II33-25D
Company:	NOBLE ENERGY INC WELD COUNTY CO	TVD Reference:	WELL @ 4878.0ft (Original Well Elev)
Project:	SEC.33-T7N-R66W	MD Reference:	WELL @ 4878.0ft (Original Well Elev)
Site:	RH Farms II33-12D Pad Sec.33-T7N-R66W	North Reference:	True
Well:	RH Farms II33-25D	Survey Calculation Method:	Minimum Curvature
Wellbore:	Wellbore #1		
Design:	Noble RH Farms II33-25D Plan #1 (9-06-11)		

Targets									
Target Name									
- hit/miss target	Dip Angle	Dip Dir.	TVD	+N/-S	+E/-W	Northing	Easting	Latitude	Longitude
- Shape	(°)	(°)	(ft)	(ft)	(ft)	(ft)	(ft)		
LEGAL BOX 800' X 800'	0.00	0.00	7,024.0	639.6	677.5	1,435,799.54	3,197,628.84	40.527496	-104.789063
- plan misses target center by 77.1ft at 7141.1ft MD (7024.0 TVD, 637.6 N, 600.5 E)									
- Rectangle (sides W800.0 H800.0 D451.0)									
TARGET CIRCLE 132'	0.00	0.00	7,024.0	637.6	600.5	1,435,796.90	3,197,551.84	40.527490	-104.789340
- plan hits target center									
- Circle (radius 75.0)									
TARGET BHL 1320'F:	0.00	0.00	5,000.0	637.6	600.5	1,435,796.90	3,197,551.84	40.527490	-104.789340
- plan hits target center									
- Point									

Casing Points					
Measured Depth (ft)	Vertical Depth (ft)	Name	Casing Diameter (")	Hole Diameter (")	
925.0	925.0	8 5/8"	8-5/8	12-1/4	

Formations						
Measured Depth (ft)	Vertical Depth (ft)	Name	Lithology	Dip (°)	Dip Direction (°)	
7,141.1	7,024.0	NIOBRARA		0.00		
7,442.1	7,325.0	CODELL		0.00		