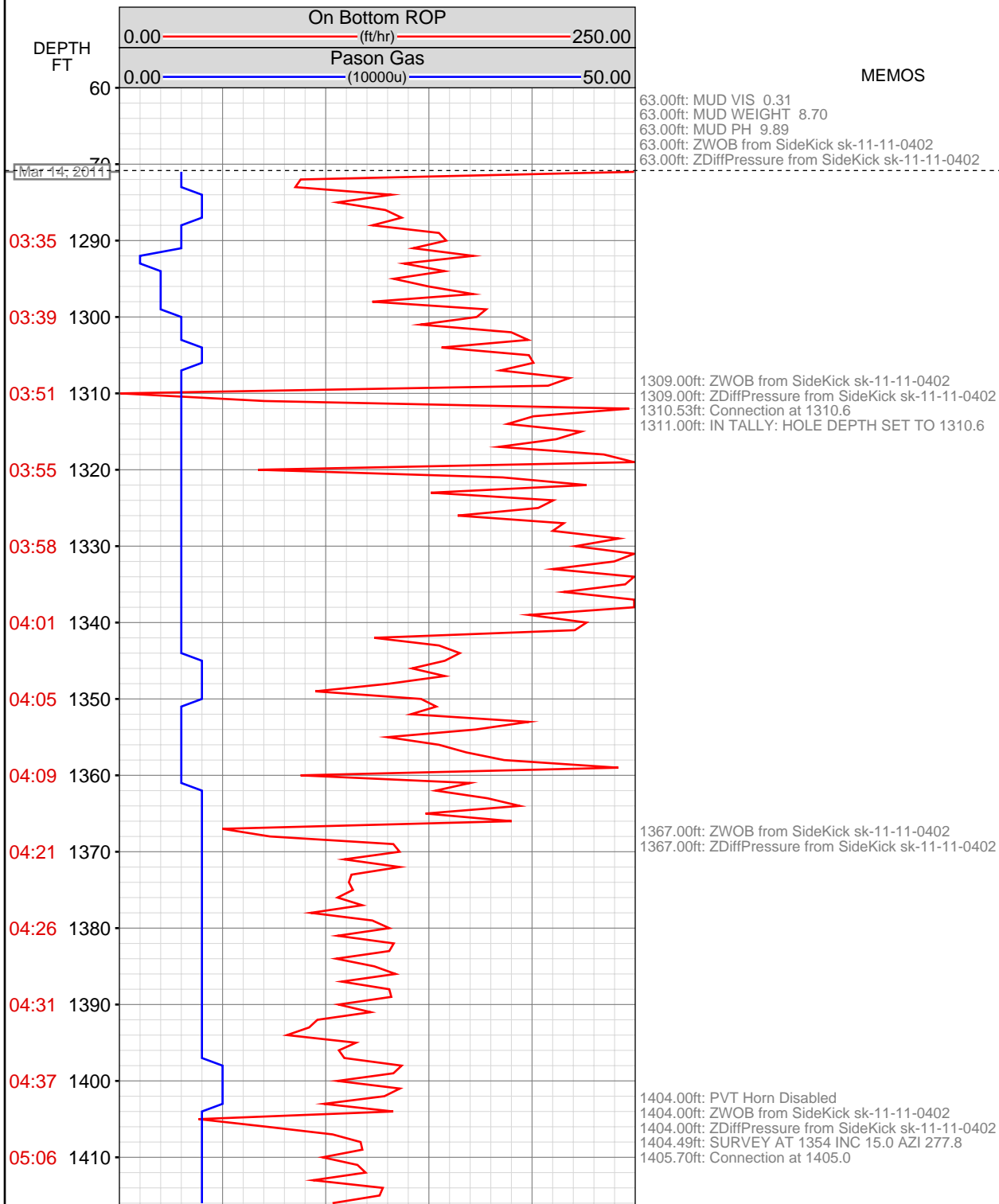
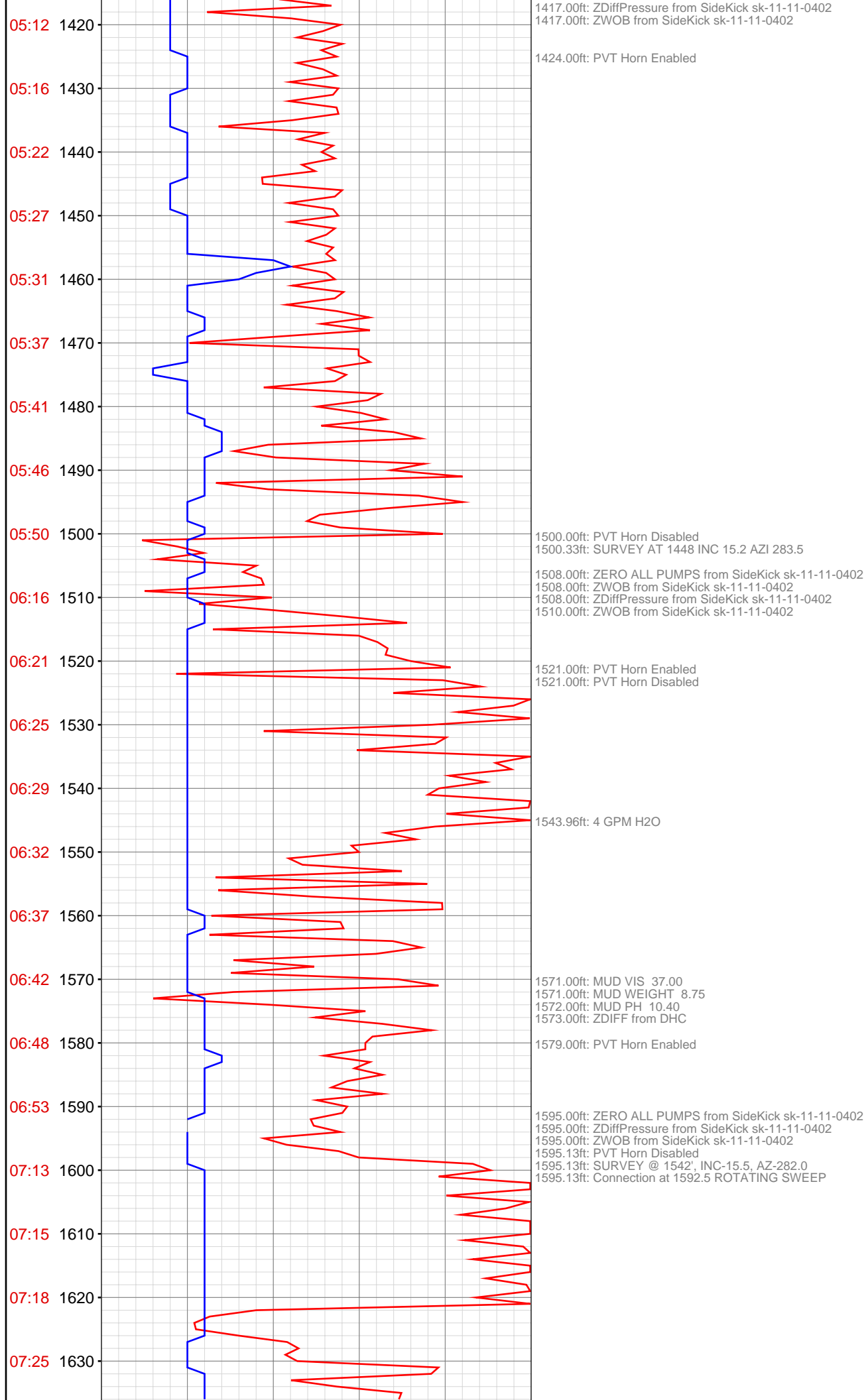
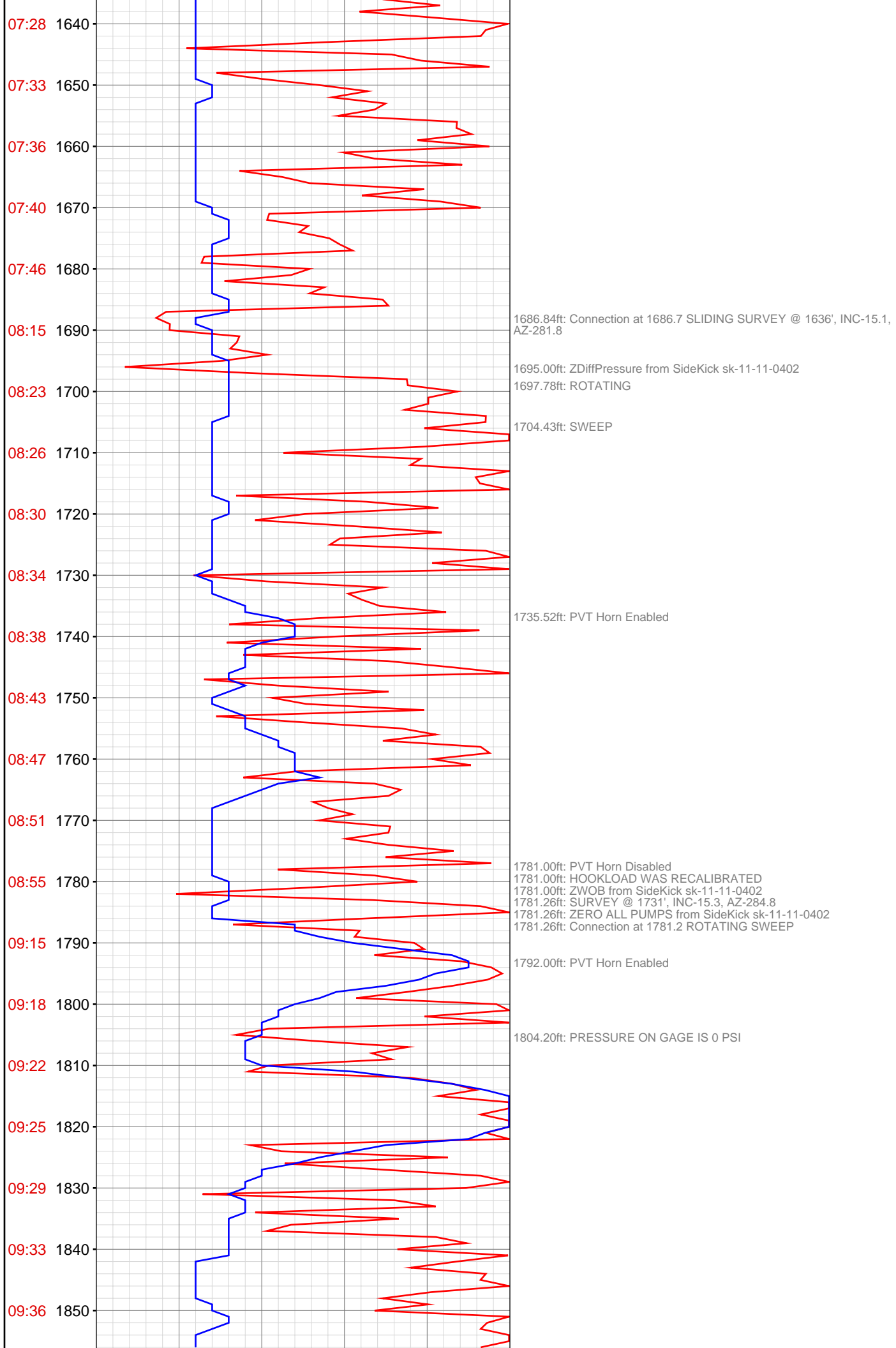


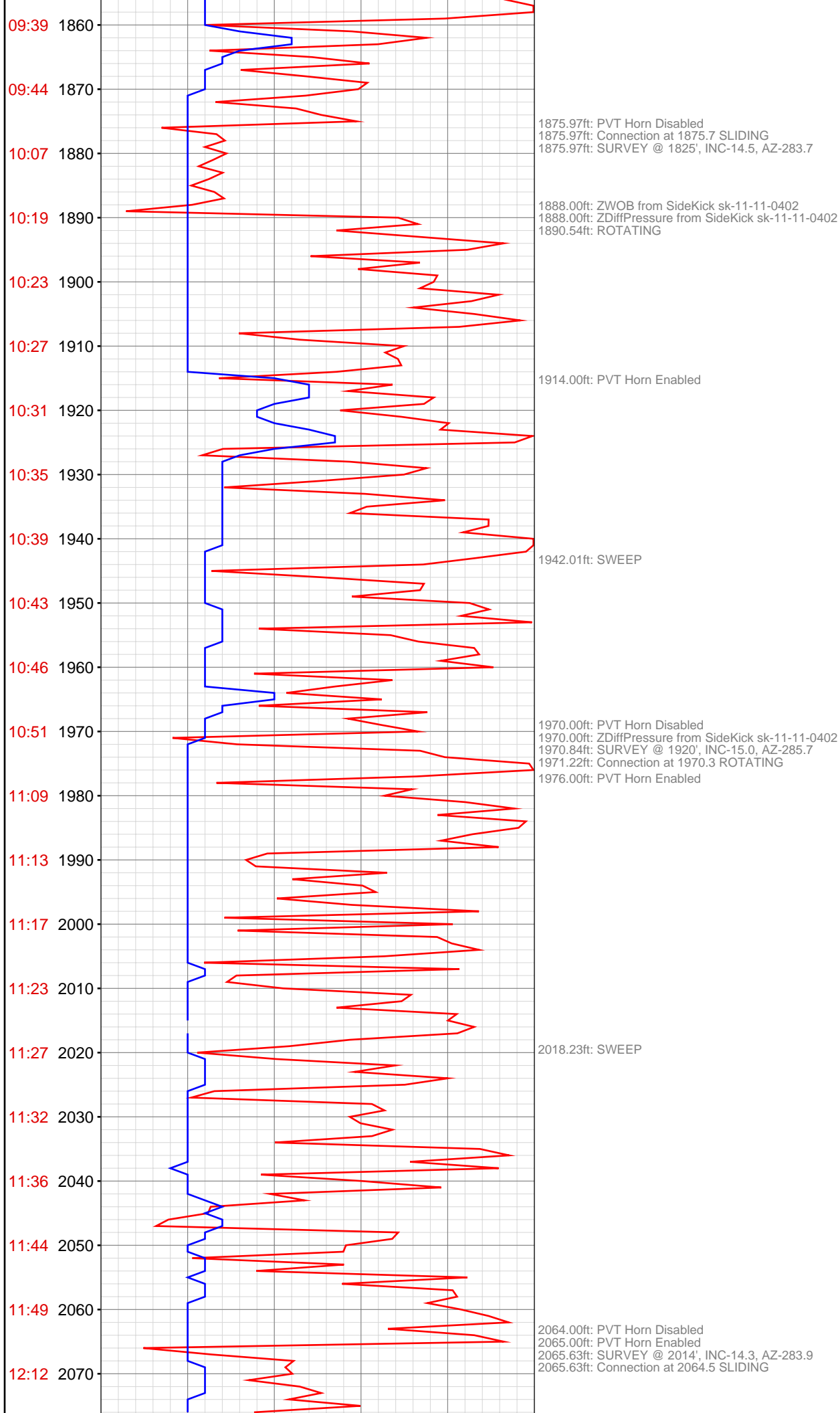
OPERATOR: EnCana Oil & Gas (USA), Inc.
WELL: GMR 8-12B (K8W) LONG STRING
FIELD:
LOCATION:
COUNTRY: USA
RIG: Pat-UTI 330

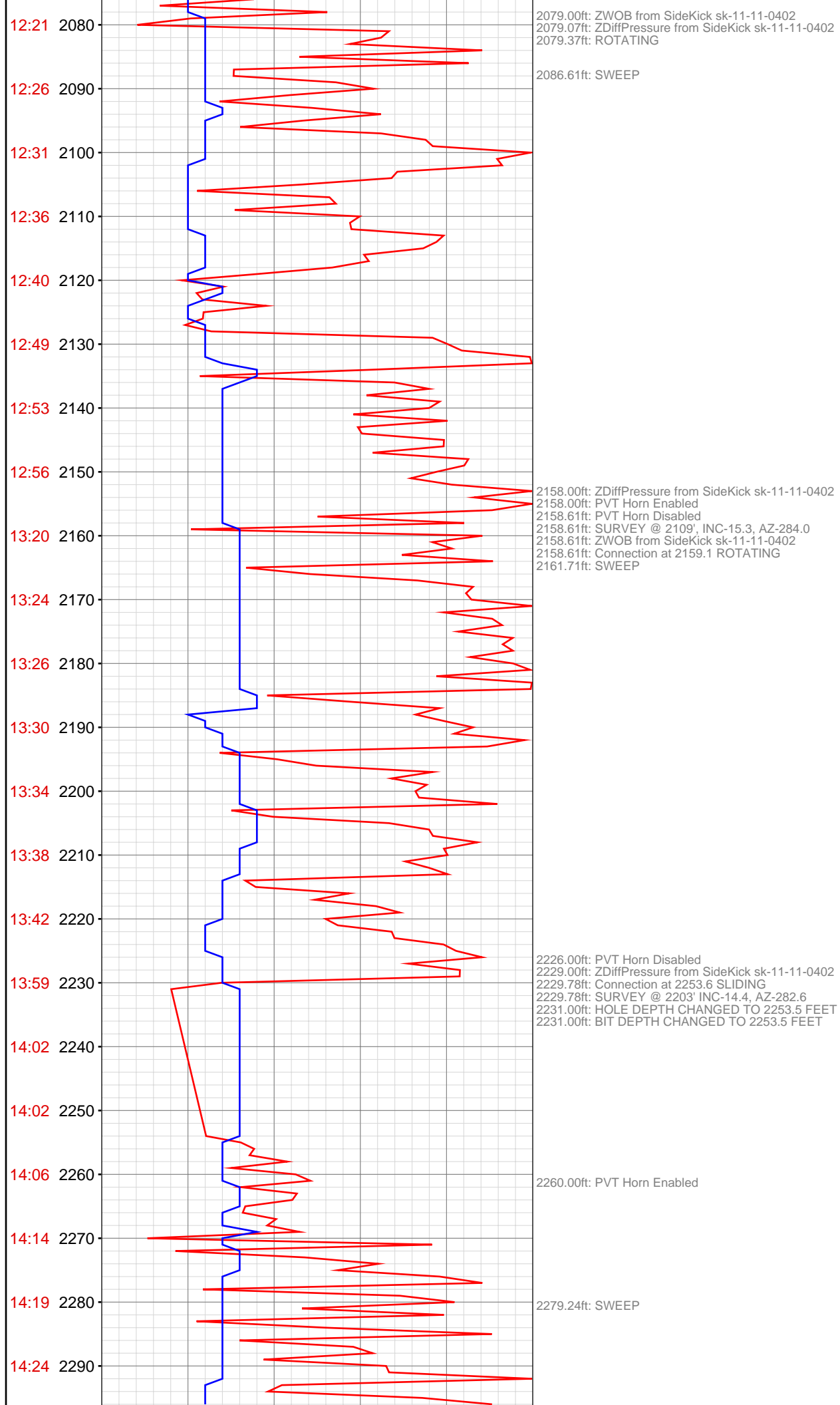
CONTRACTOR: Patterson-UTI Drilling Company
UNIQUE WELL ID: 05 045 19144 00
SPUD DATE: Mar 14, 2011 03:00
RELEASE DATE:

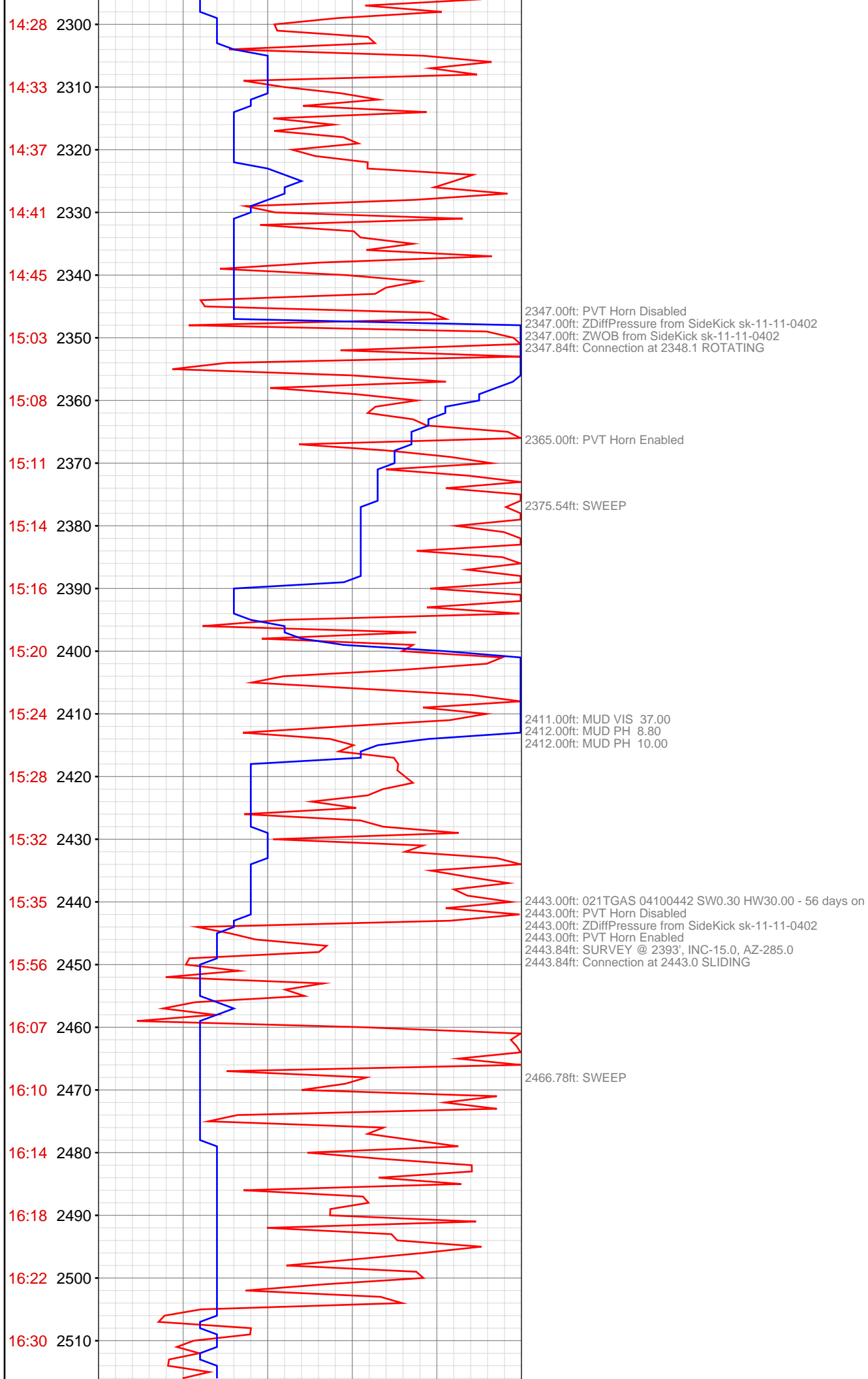


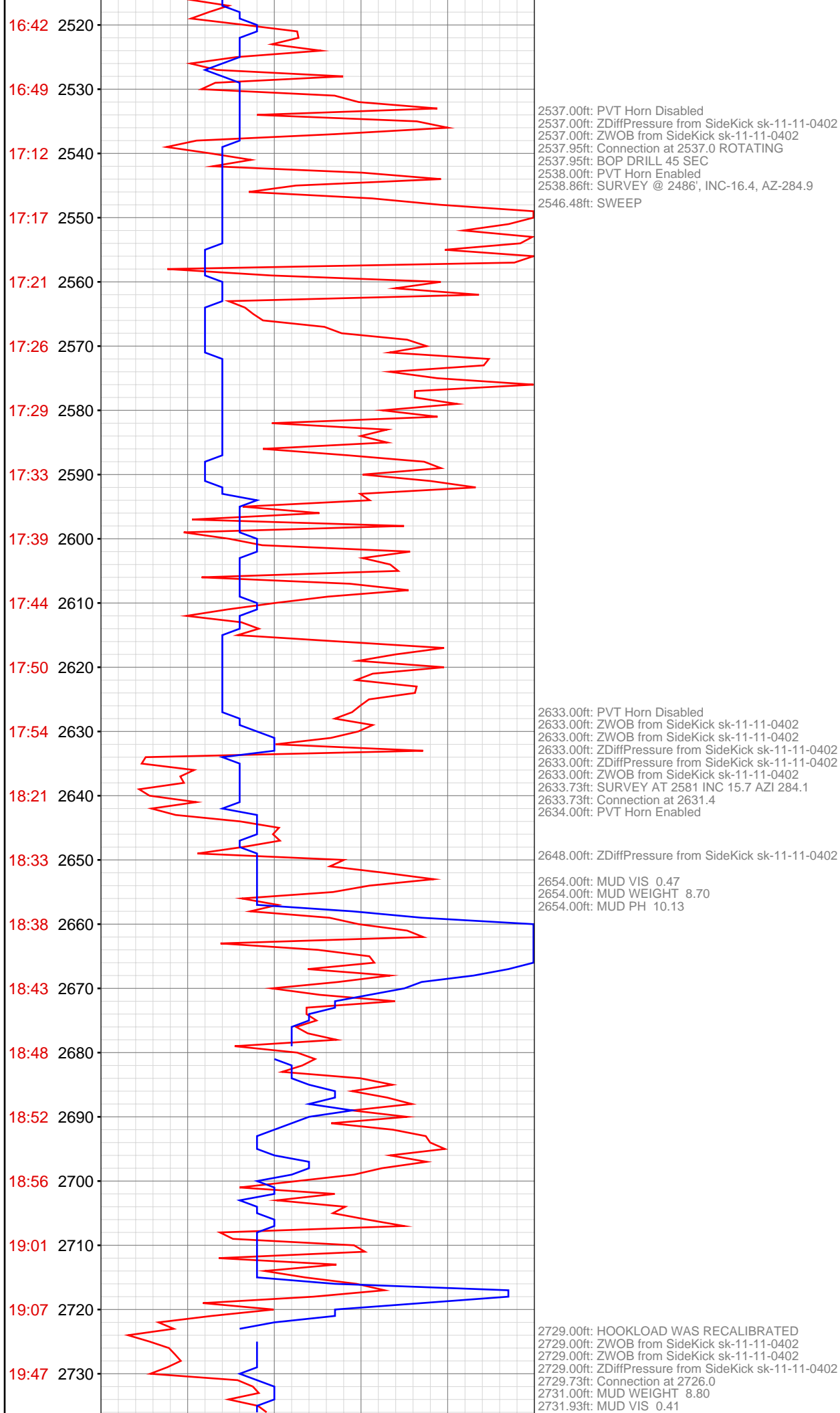












2732.00ft: MUD PH 10.26
2737.00ft: ZDiffPressure from SideKick sk-11-11-0402
2737.00ft: ZWOB from SideKick sk-11-11-0402

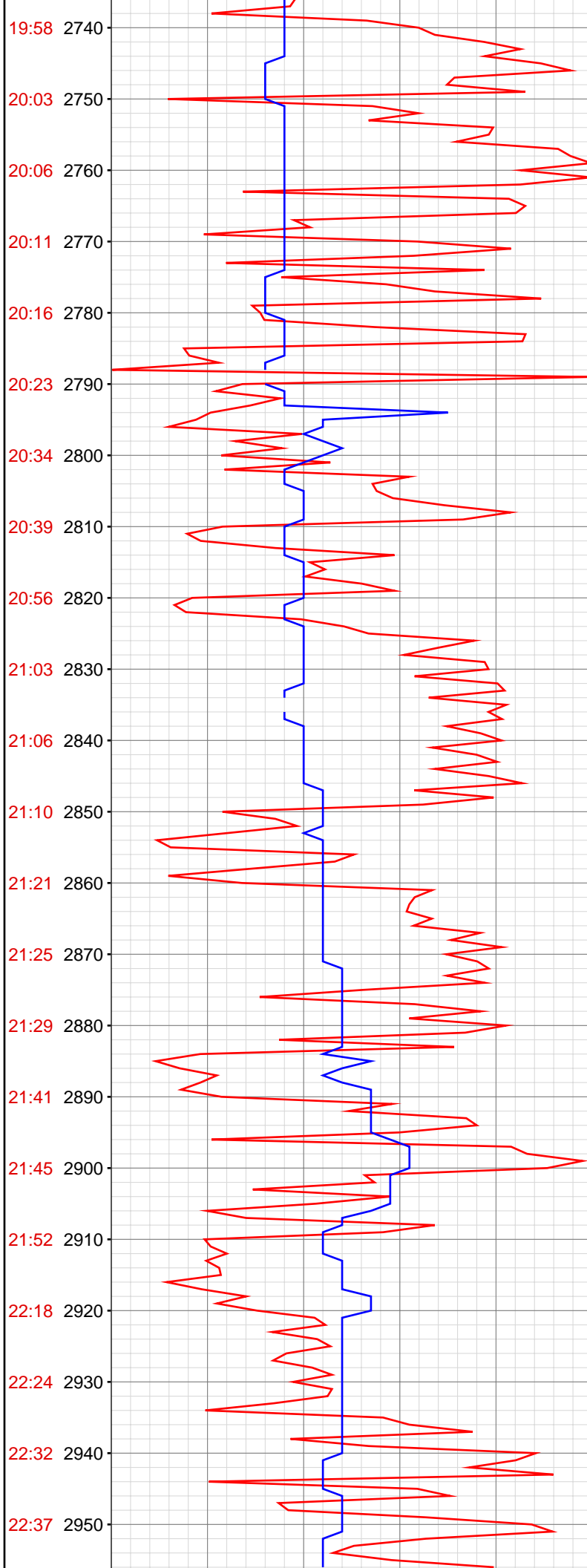
2819.00ft: ZWOB from SideKick sk-11-11-0402
2819.00ft: ZDiffPressure from SideKick sk-11-11-0402
2819.49ft: PVT Horn Disabled
2819.49ft: SURVEY AT 2770 INC 16.7 AZI 282.8
2819.79ft: Connection at 2820.6
2820.00ft: PVT Horn Enabled

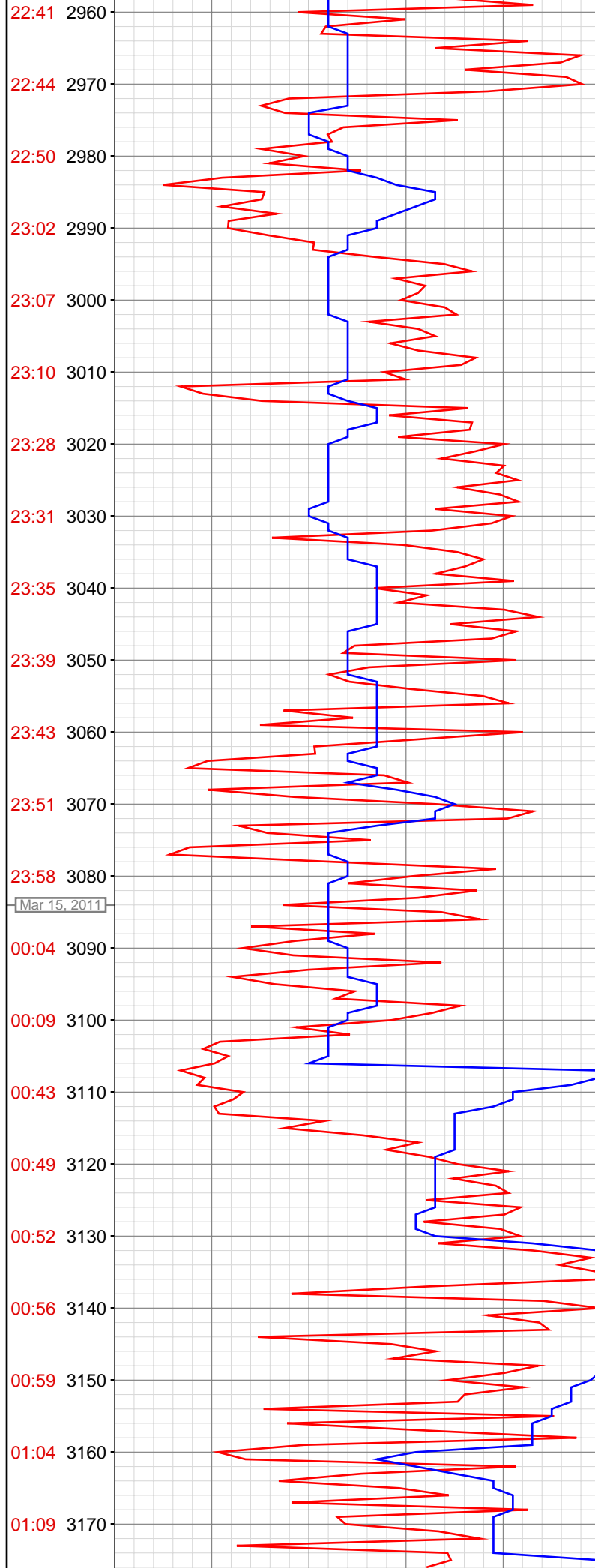
2841.00ft: MUD WEIGHT 9.00
2841.00ft: MUD PH 9.80
2841.23ft: MUD VIS 0.45

2909.00ft: MUD VIS 0.49
2909.00ft: MUD WEIGHT 9.00
2909.00ft: MUD PH 9.96
2915.00ft: ZWOB from SideKick sk-11-11-0402
2915.00ft: ZDiffPressure from SideKick sk-11-11-0402
2915.00ft: PVT Horn Disabled
2915.49ft: SURVEY AT 2865 INC 16.2 AZI 282.9
2915.49ft: Connection at 2915.1

2933.00ft: ZDiffPressure from SideKick sk-11-11-0402
2933.00ft: ZWOB from SideKick sk-11-11-0402
2937.00ft: PVT Horn Enabled

2952.00ft: MUD VIS 0.47
2952.00ft: MUD WEIGHT 9.00
2953.00ft: MUD PH 10.12

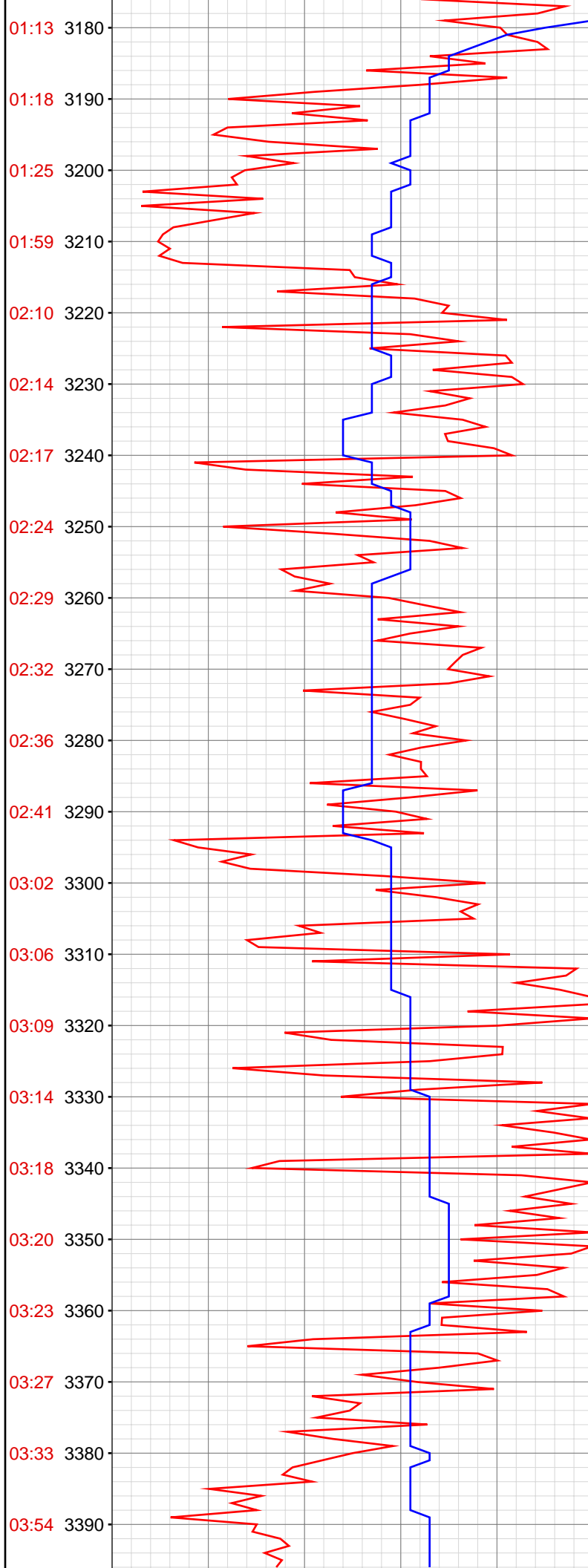




3011.00ft: ZWOB from SideKick sk-11-11-0402
3011.00ft: ZDiffPressure from SideKick sk-11-11-0402
3011.00ft: PVT Horn Disabled
3011.11ft: SURVEY AT 2959 INC 16.7 AZI 285.1
3011.11ft: Connection at 3009.7
3012.00ft: PVT Horn Enabled

3060.00ft: MUD VIS 0.53
3060.00ft: MUD WEIGHT 8.90
3061.76ft: MUD PH 10.02

3105.00ft: PVT Horn Disabled
3106.00ft: ZWOB from SideKick sk-11-11-0402
3106.00ft: ZDiffPressure from SideKick sk-11-11-0402
3106.51ft: SURVEY DEPTH 3054
3106.51ft: SURVEY AT INC 16.5 AZI 286.0
3106.51ft: Connection at 3104.3
3108.17ft: PVT Horn Enabled



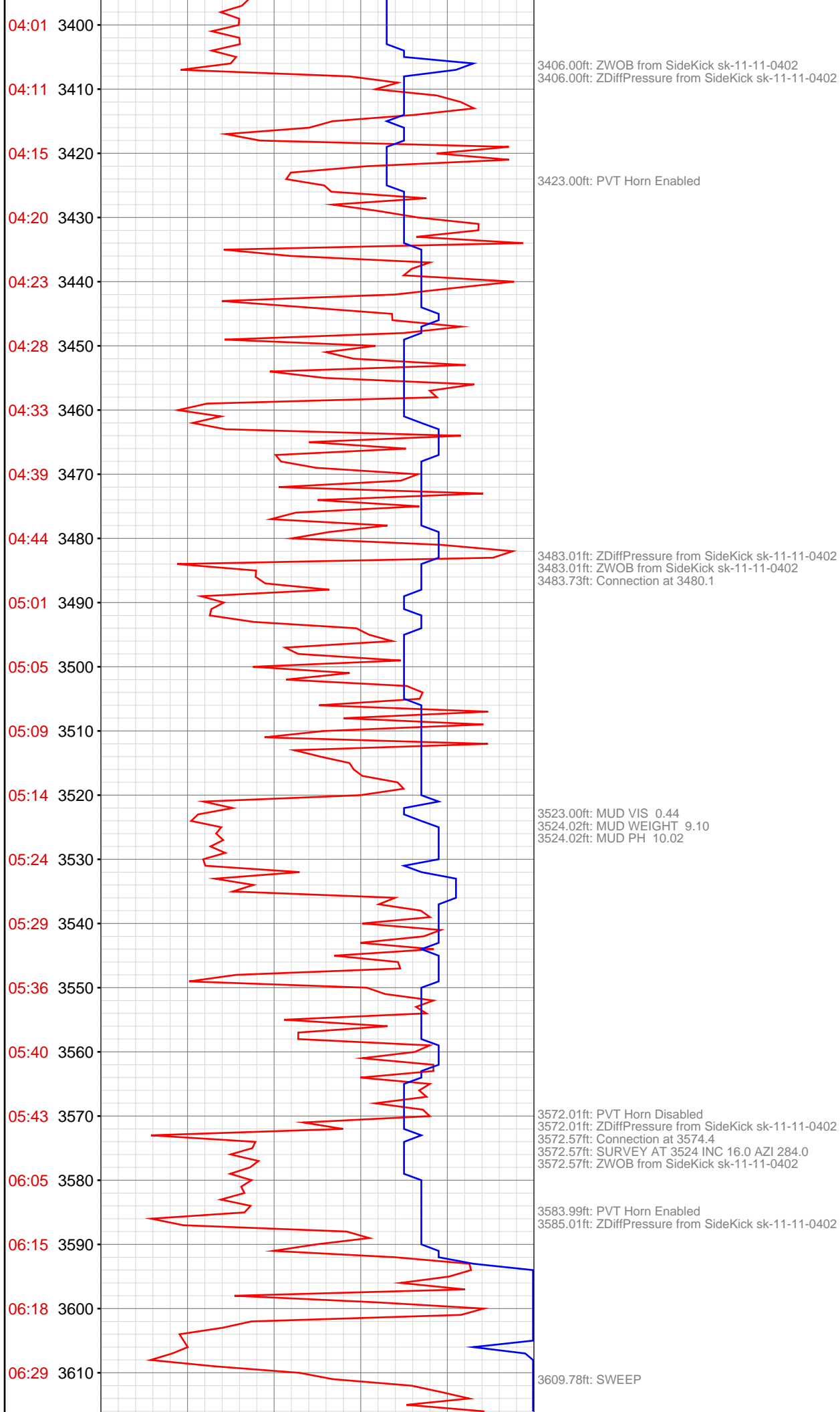
3202.00ft: PVT Horn Disabled
3202.00ft: ZDiffPressure from SideKick sk-11-11-0402
3202.00ft: ZWOB from SideKick sk-11-11-0402
3202.51ft: SURVEY AT 3148 INC 15.9 AZI 284.9
3202.51ft: Connection at 3198.2

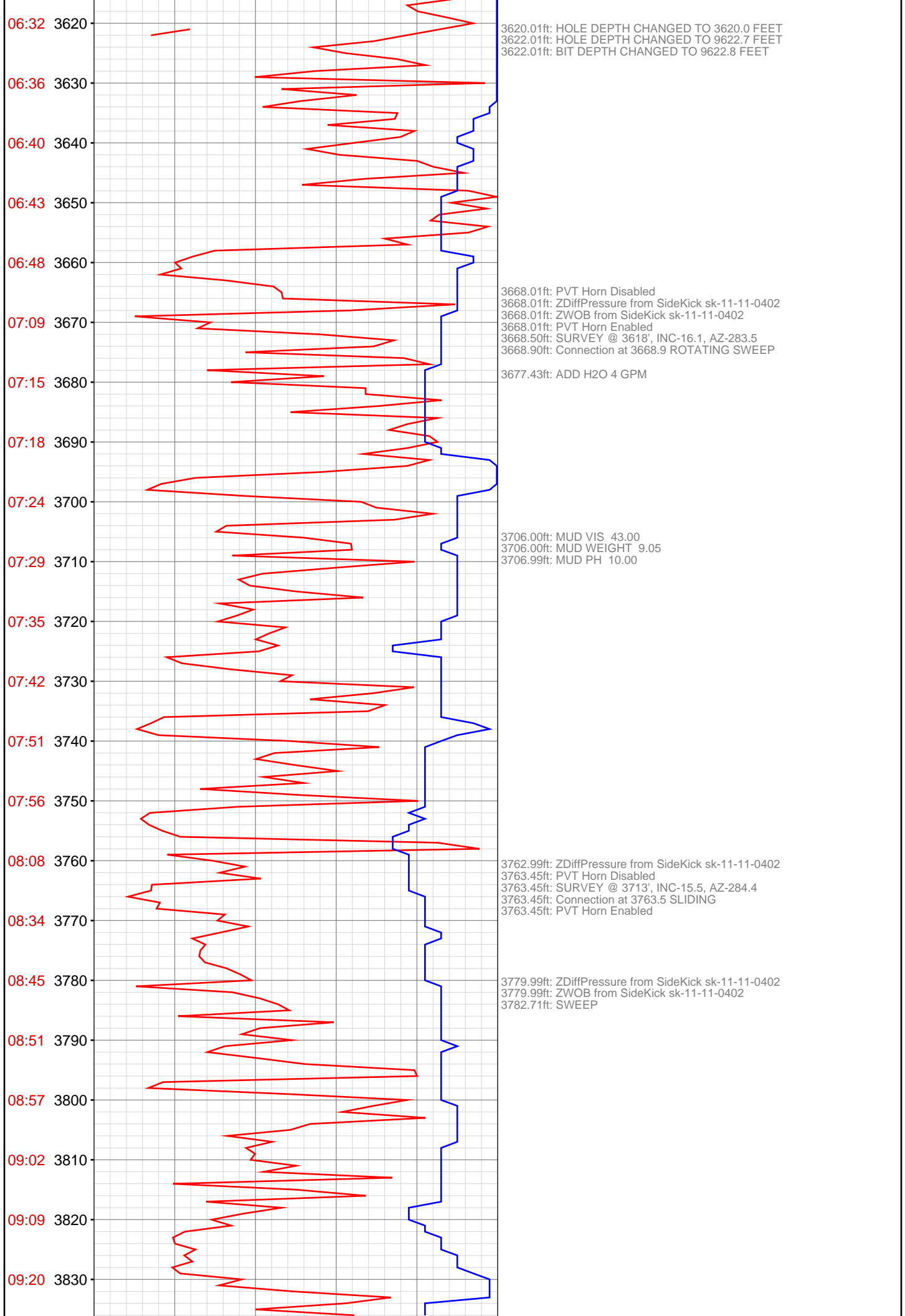
3219.19ft: PVT Horn Enabled

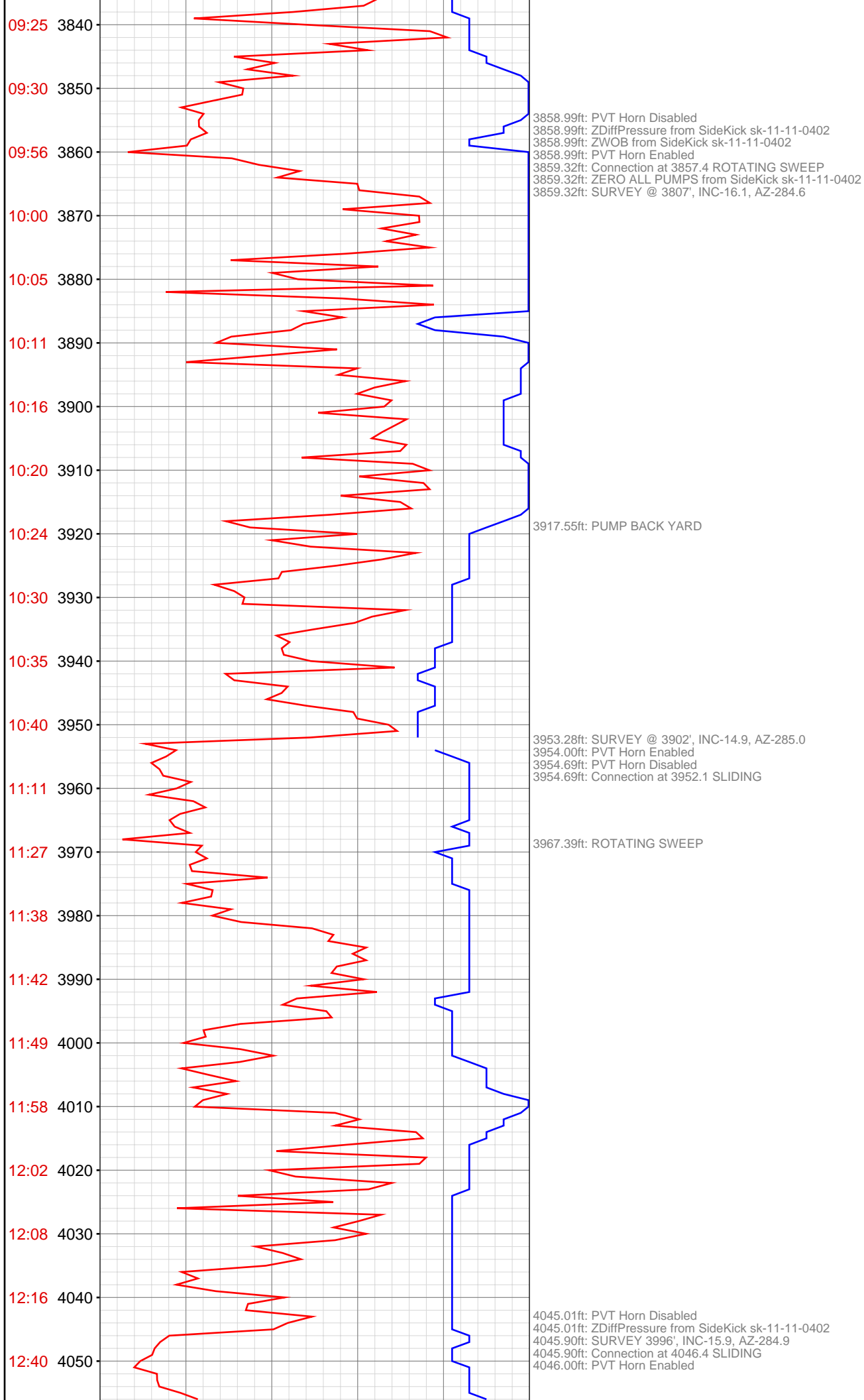
3293.01ft: PVT Horn Disabled
3293.01ft: ZWOB from SideKick sk-11-11-0402
3293.01ft: ZDiffPressure from SideKick sk-11-11-0402
3293.14ft: SURVEY AT 3242 INC 16.3 AZI 284.9
3294.00ft: PVT Horn Enabled
3294.65ft: Connection at 3292.1

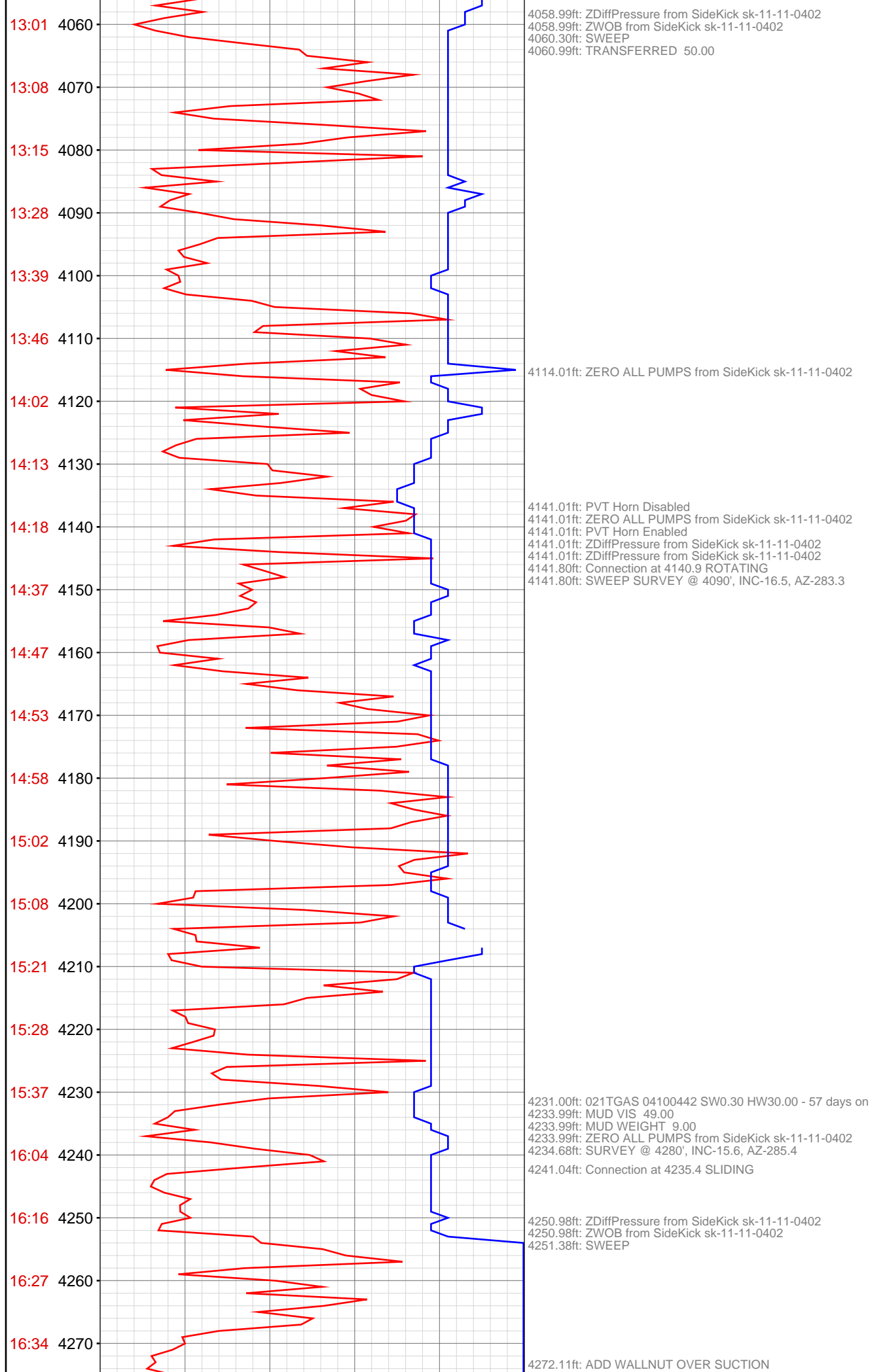
3308.01ft: MUD VIS 0.46
3308.01ft: MUD WEIGHT 8.90
3308.01ft: MUD PH 10.54

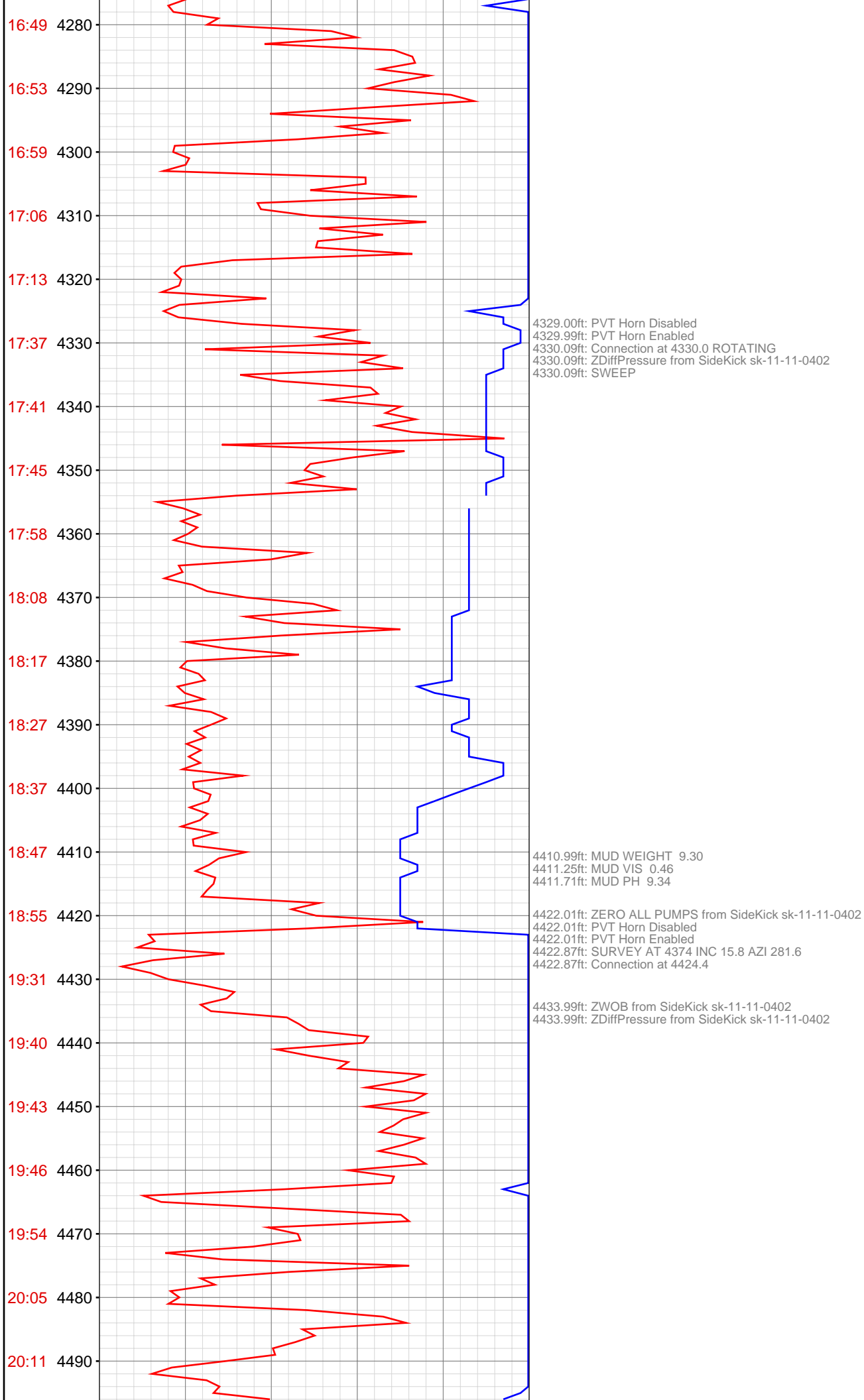
3387.99ft: PVT Horn Disabled
3388.55ft: SURVEY AT 3335 INC 15.8 AZI 282.7
3388.55ft: Connection at 3385.6

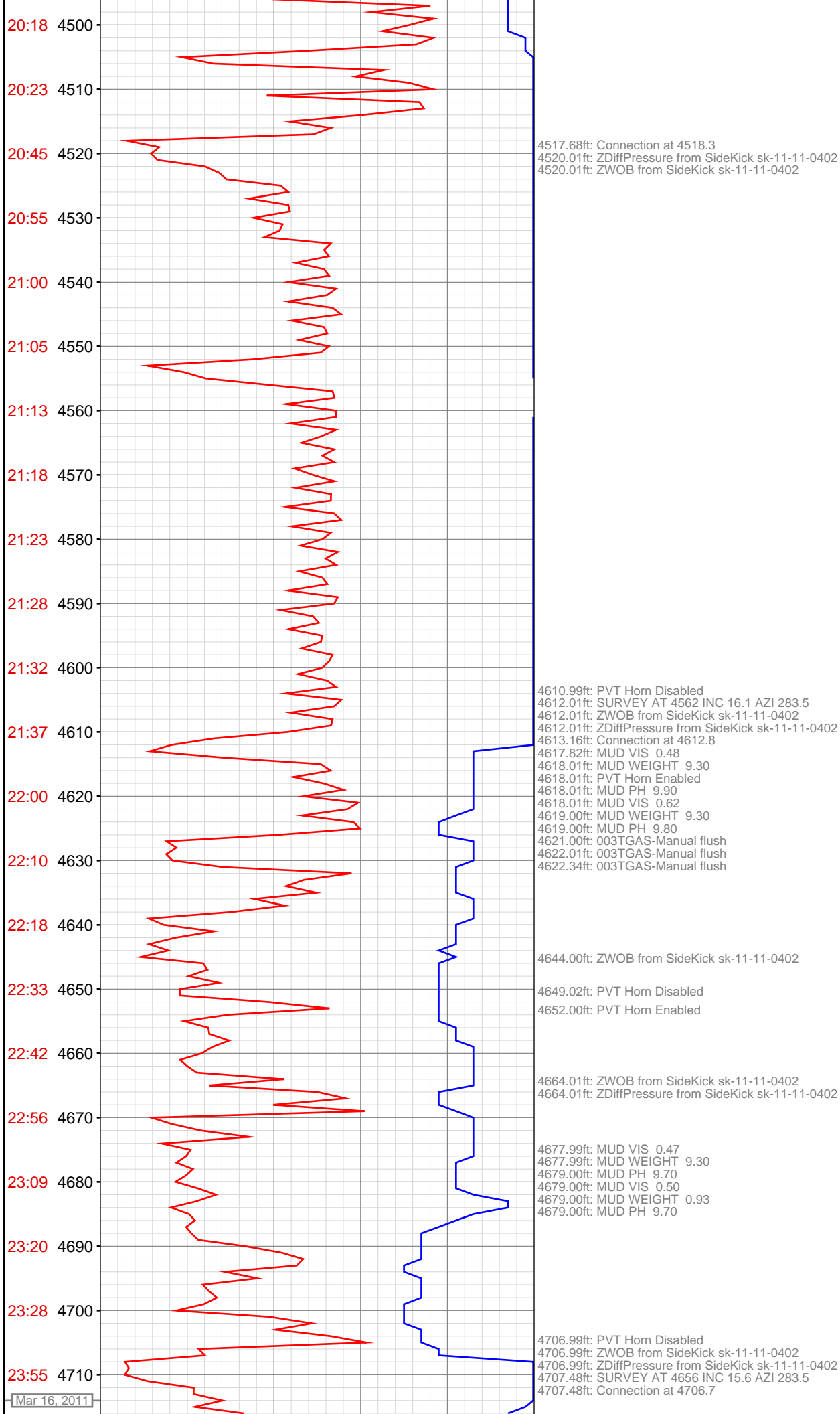


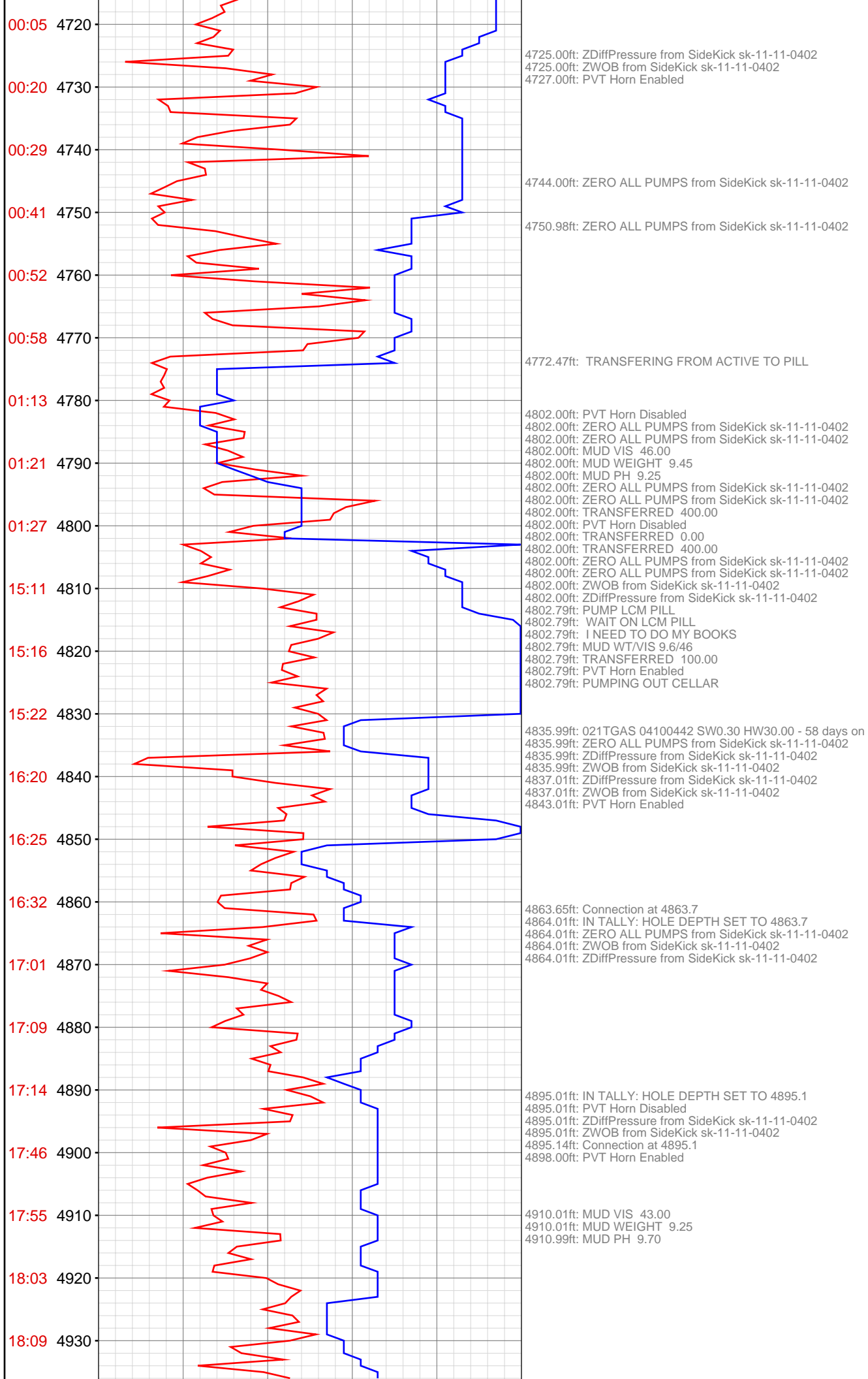


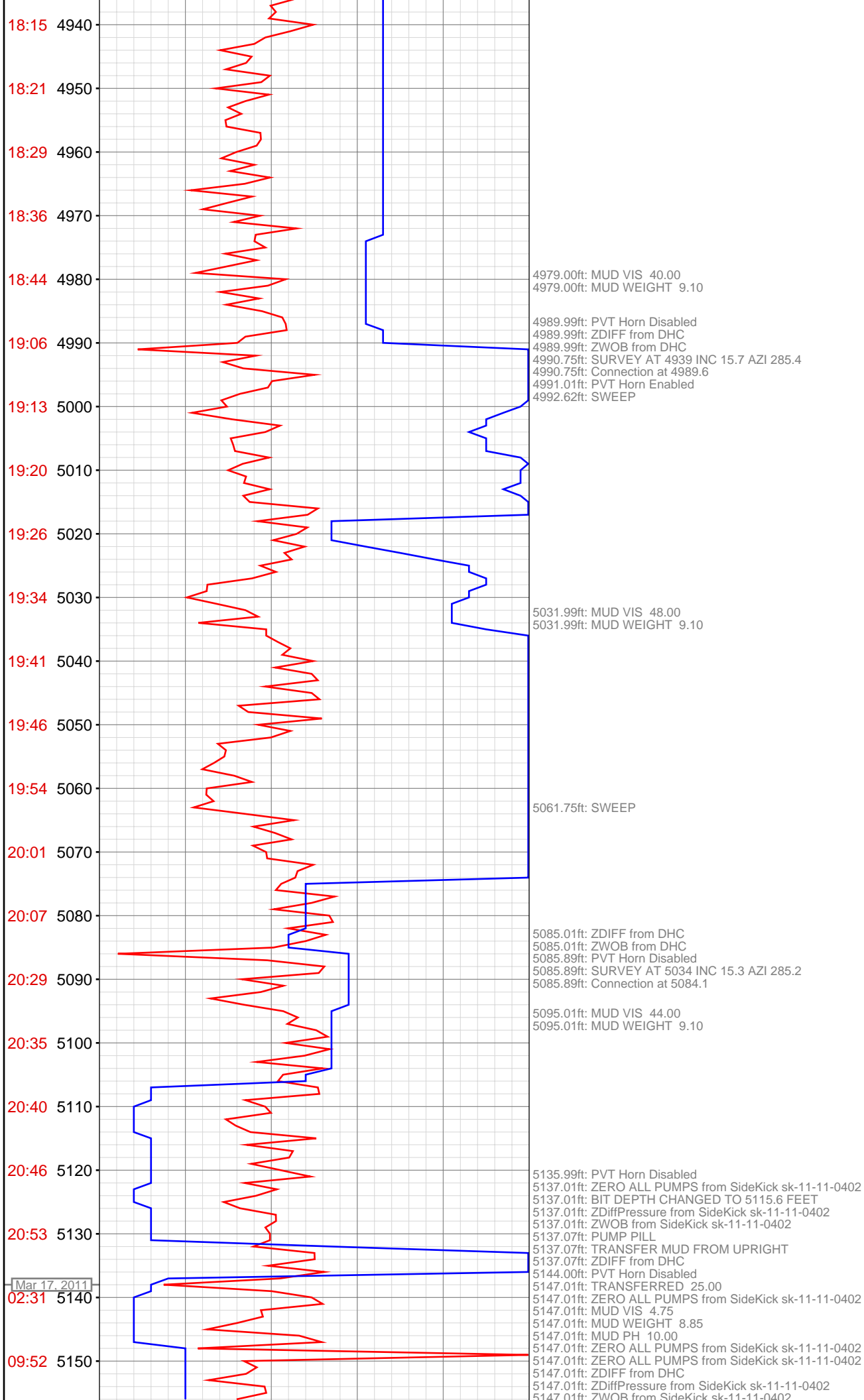


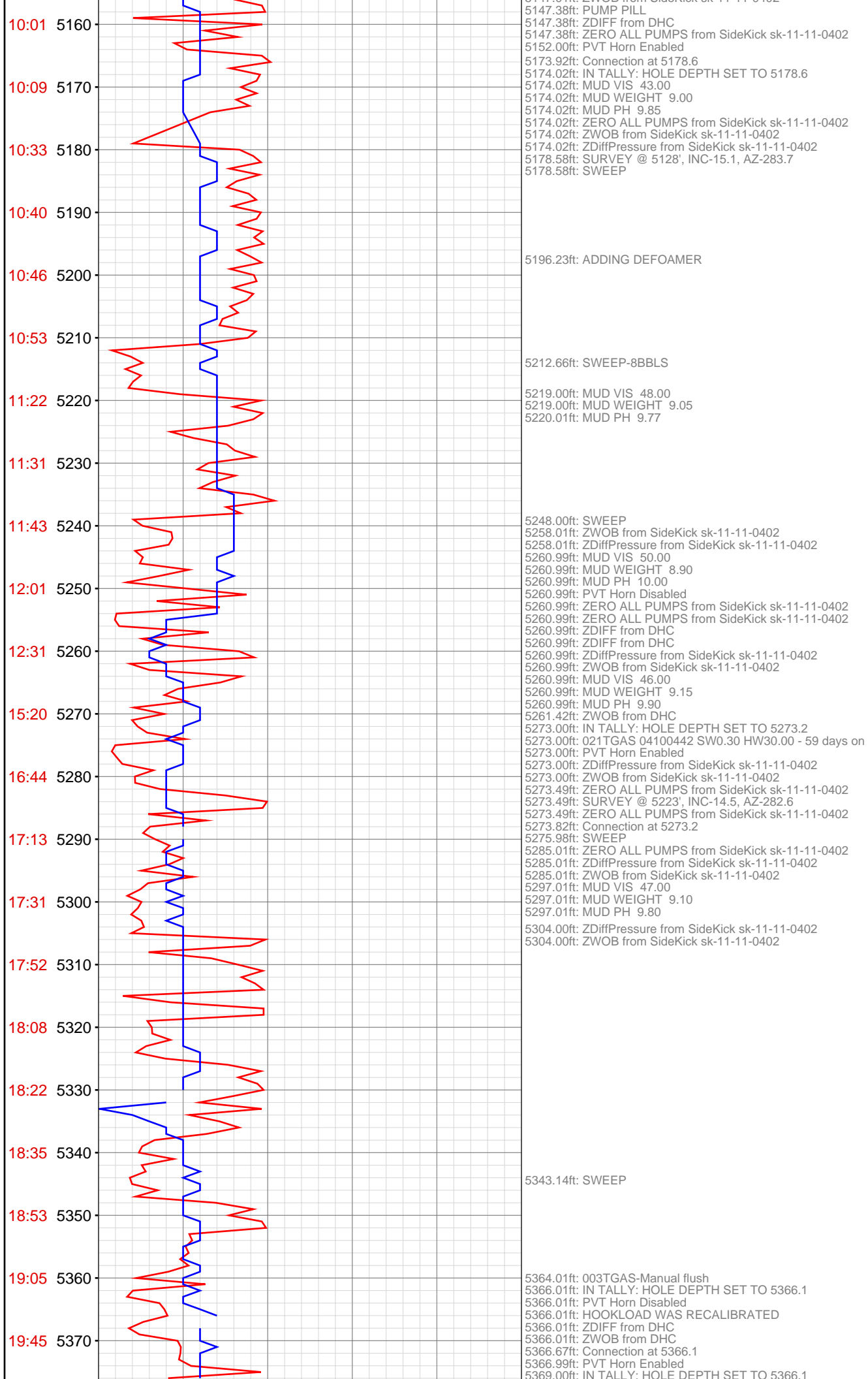


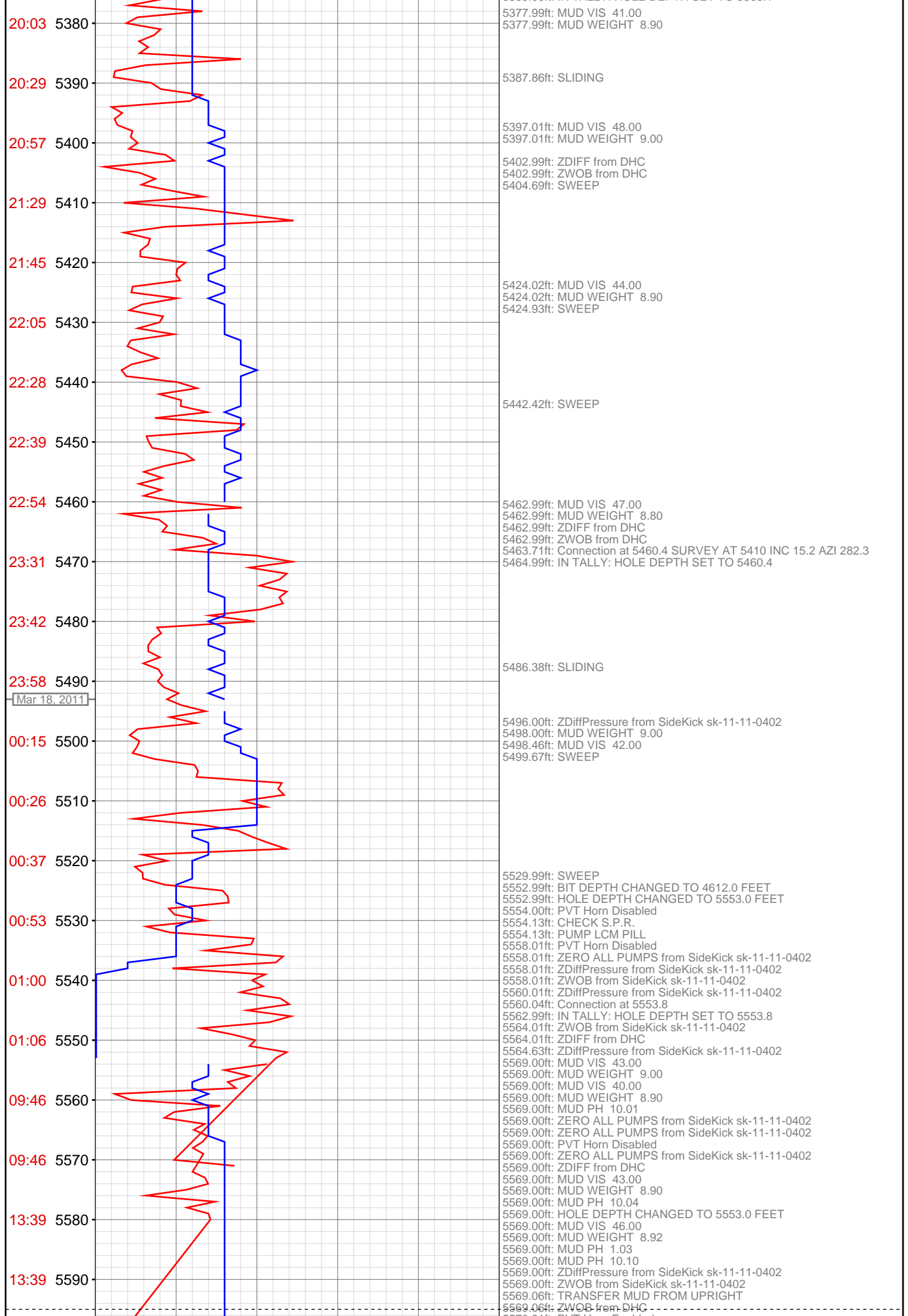


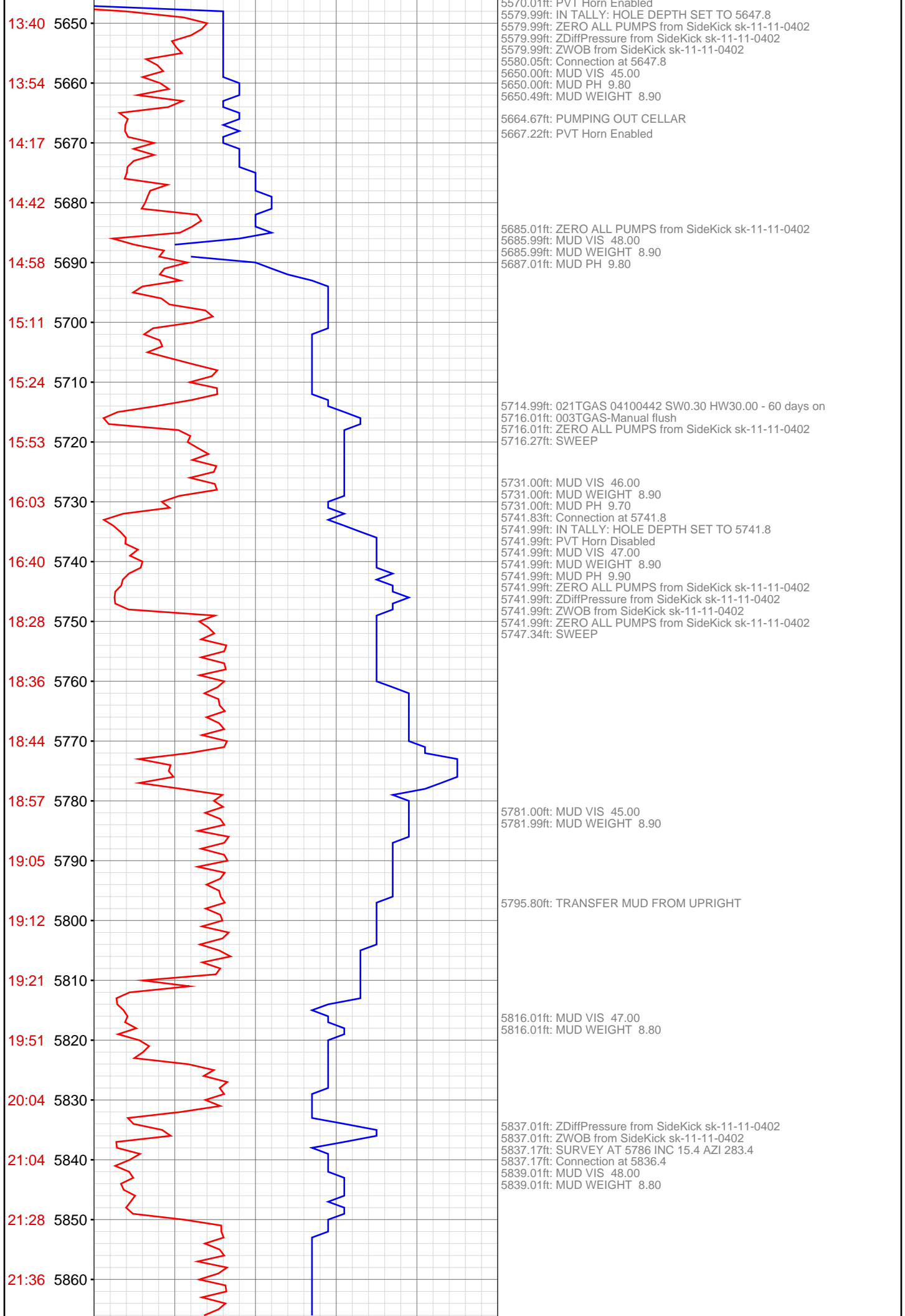


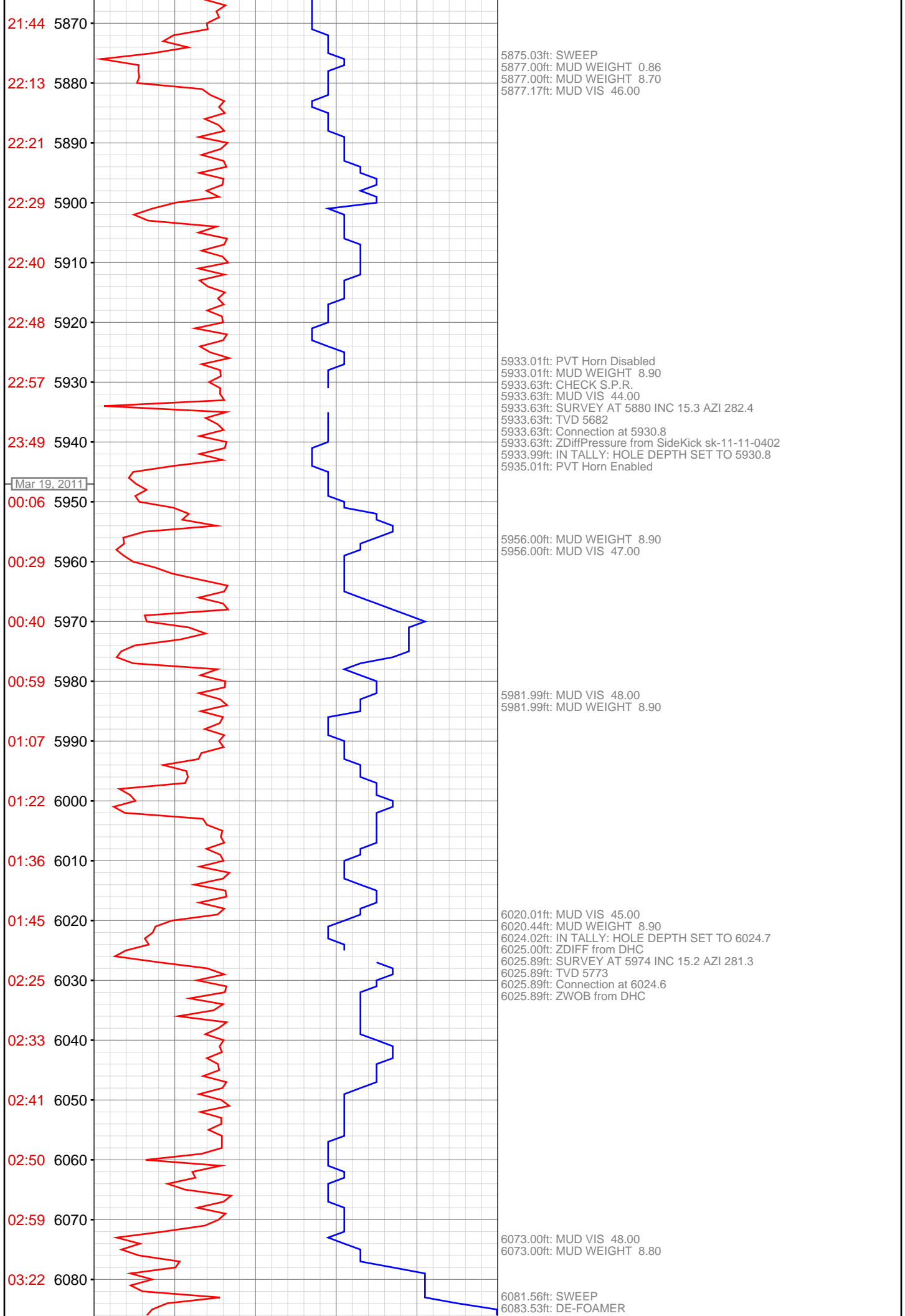


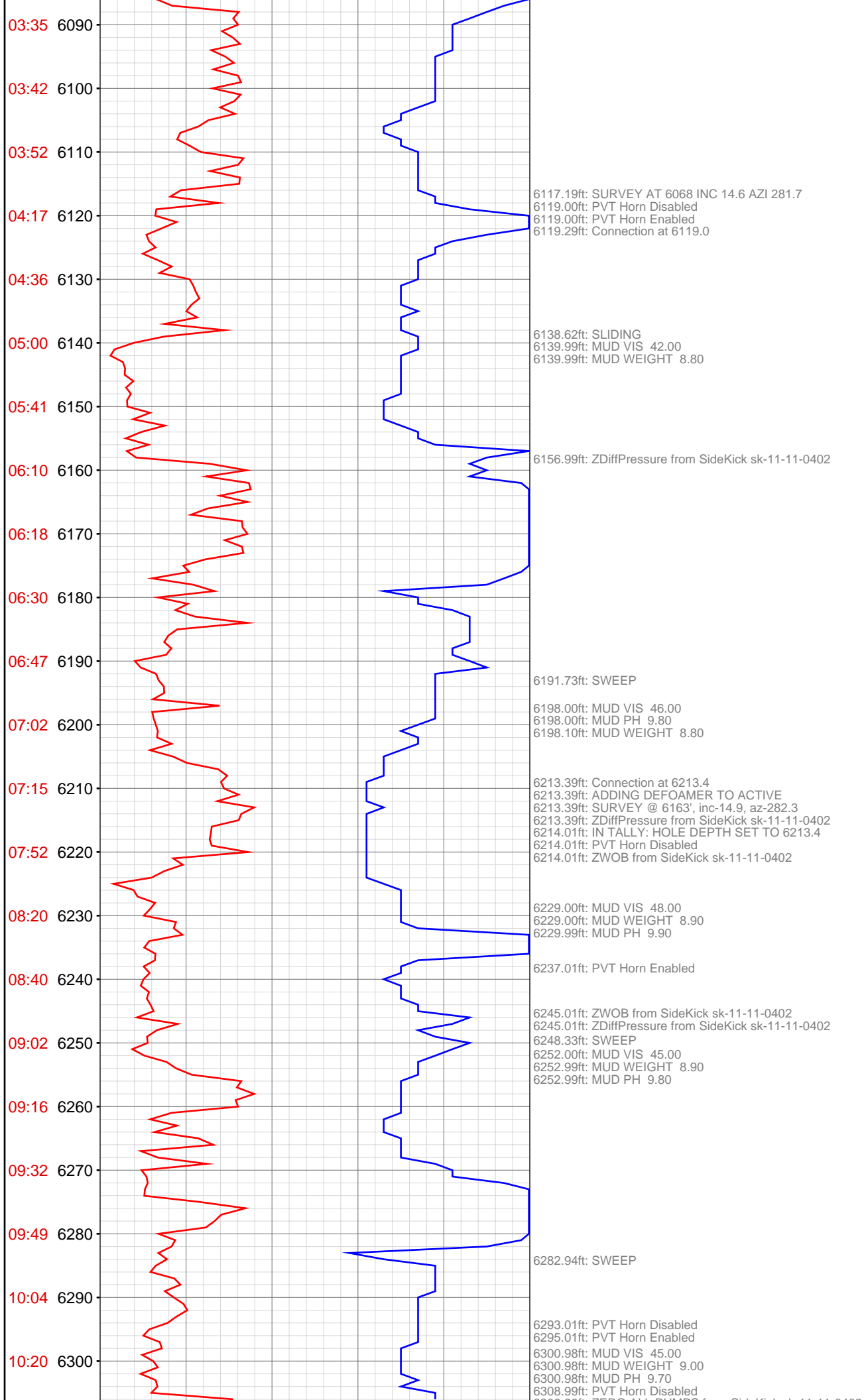


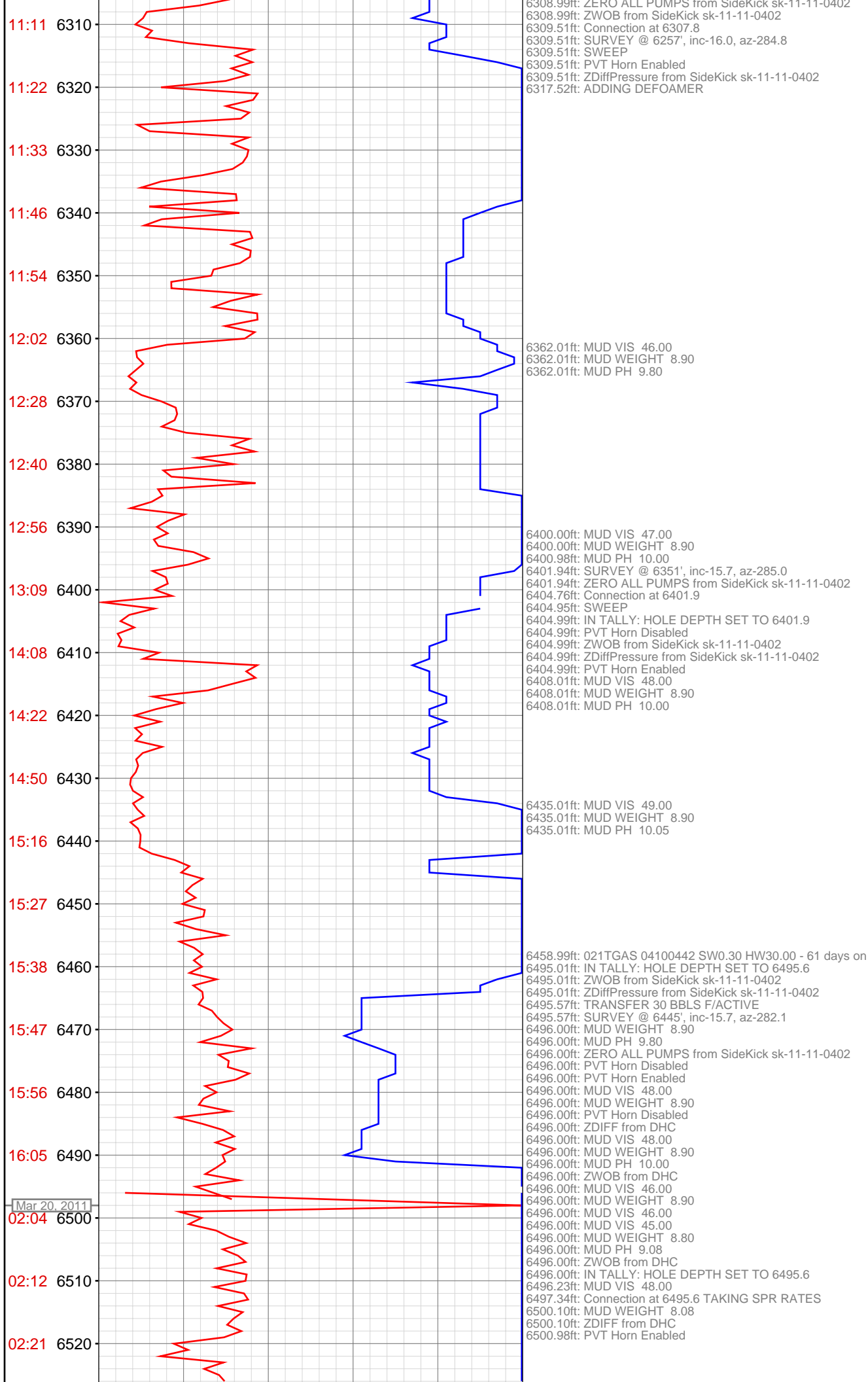


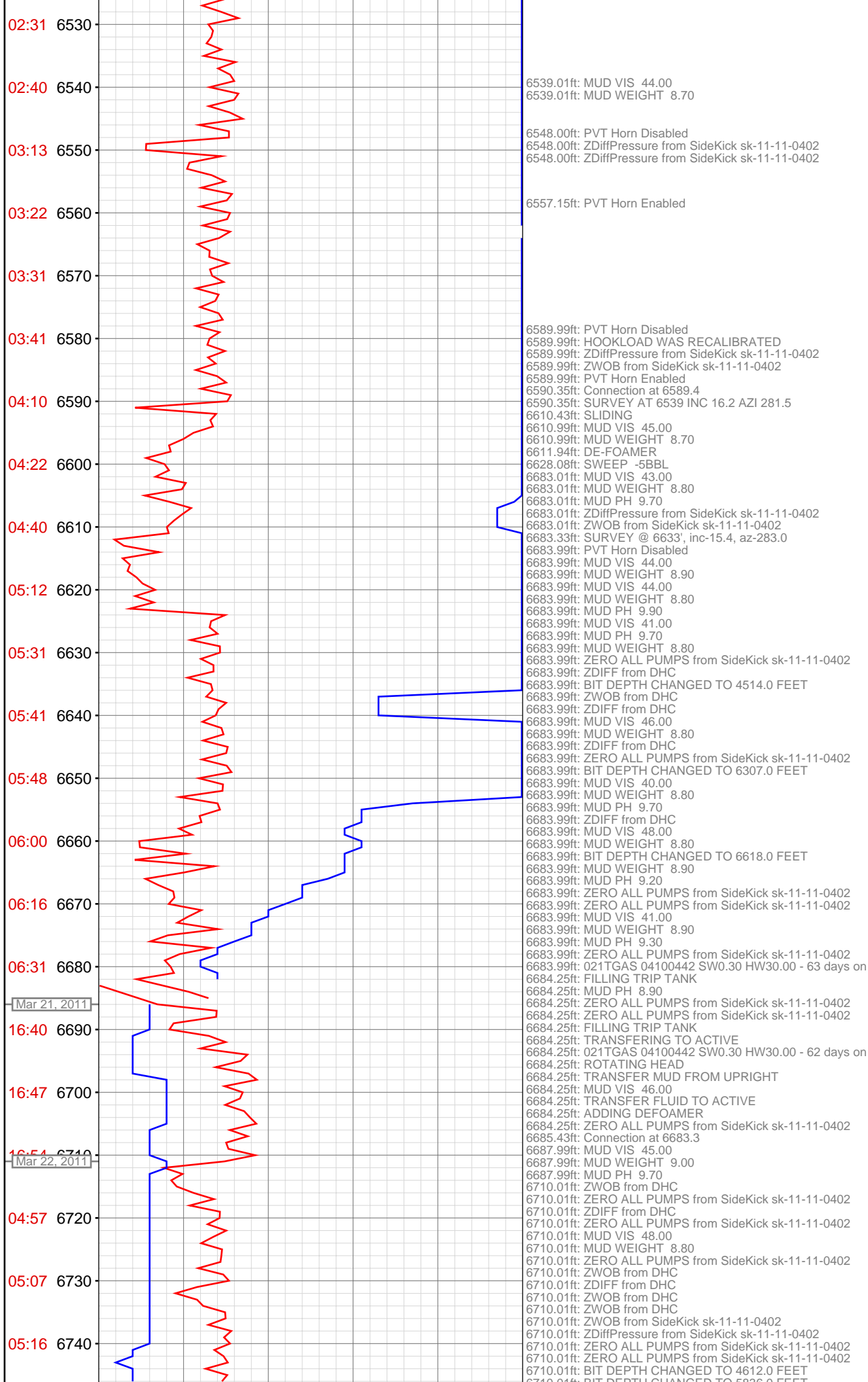


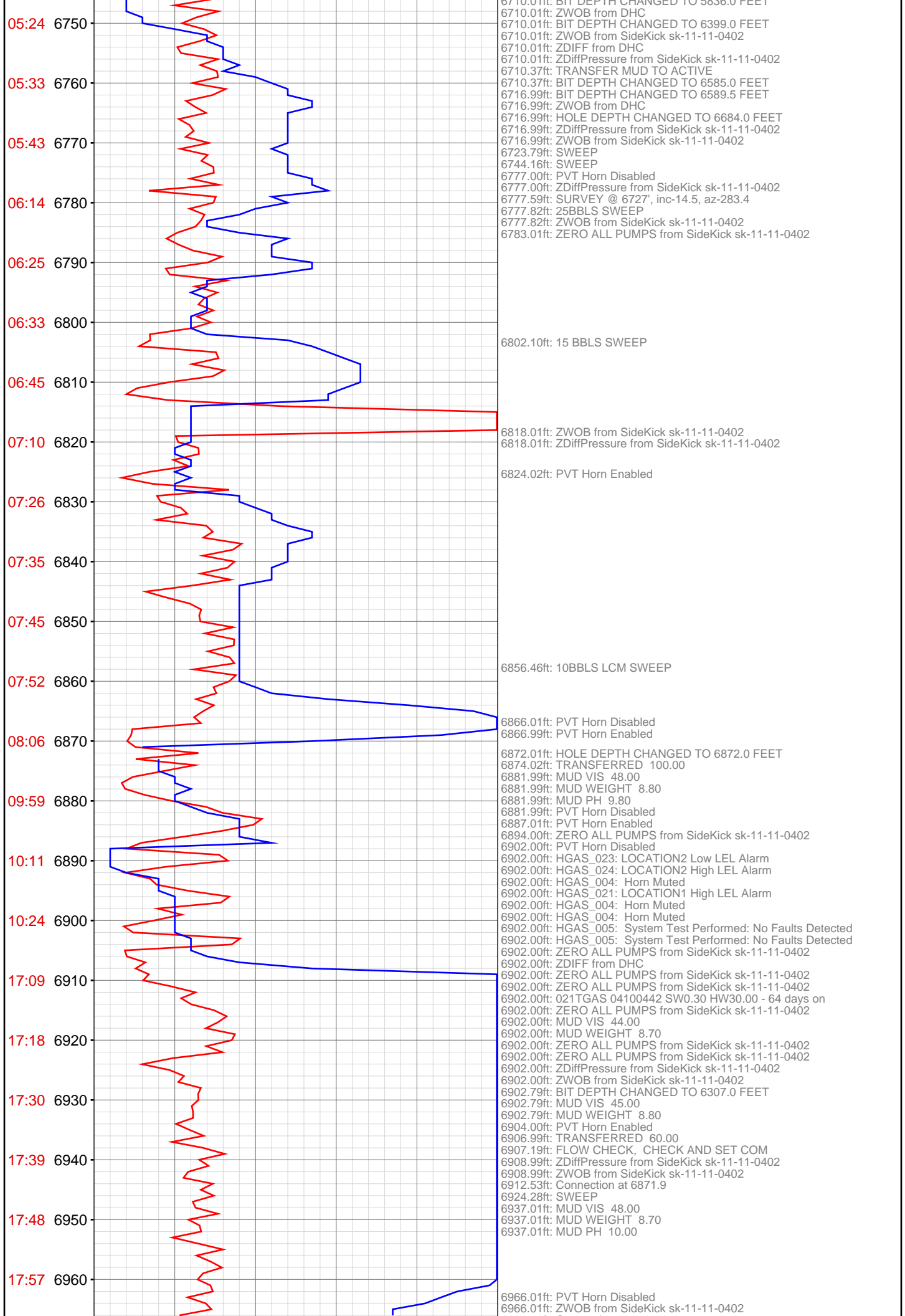


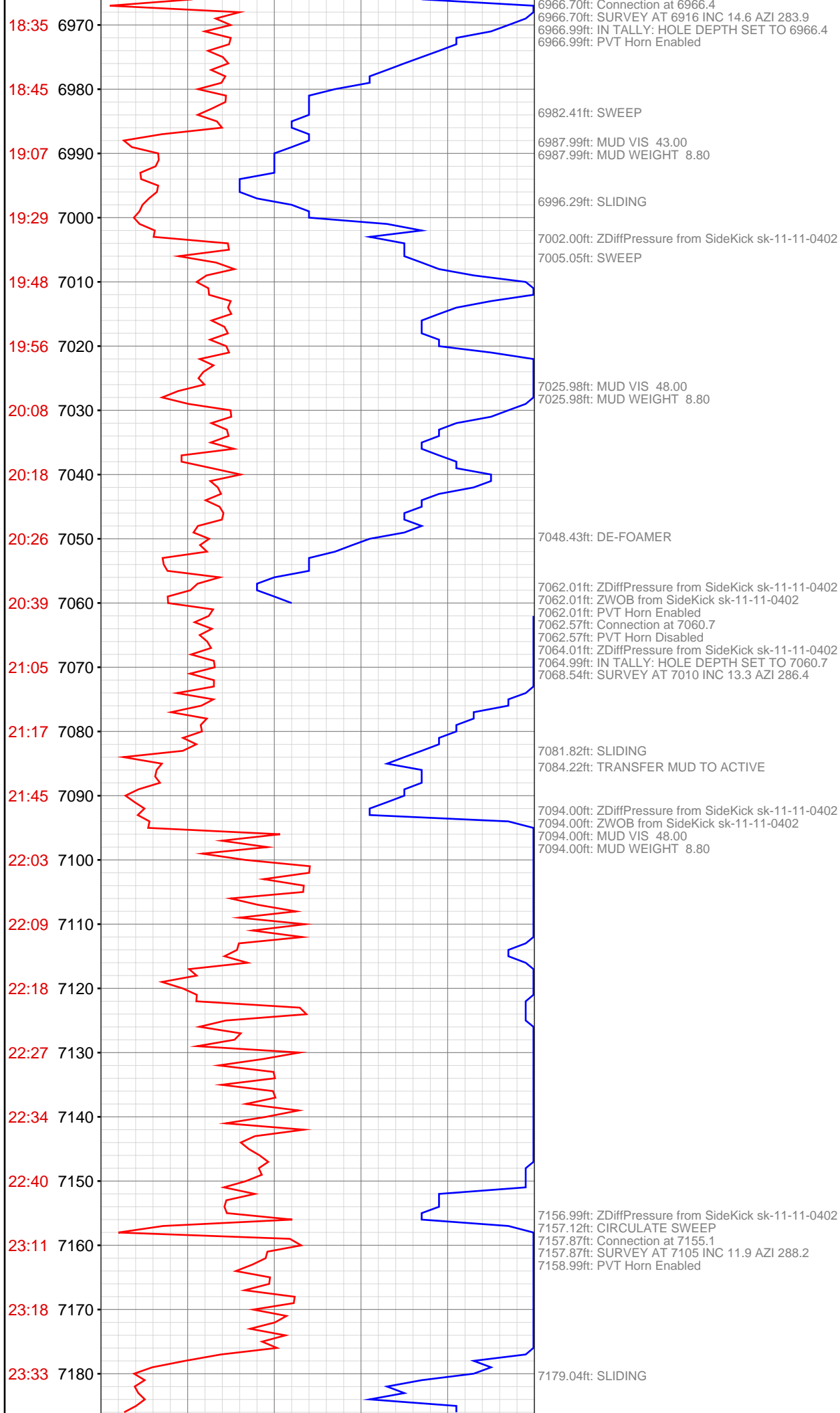












23:59 7190
Mar 23, 2011

00:07 7200

00:15 7210

00:23 7220

00:32 7230

00:40 7240

00:47 7250

01:18 7260

01:27 7270

01:48 7280

01:55 7290

02:02 7300

02:08 7310

02:17 7320

02:26 7330

02:33 7340

03:01 7350

03:12 7360

03:33 7370

03:50 7380

03:58 7390

04:07 7400

7187.01ft: ZDiffPressure from SideKick sk-11-11-0402

7189.90ft: SWEEP

7200.00ft: MUD VIS 45.00
7200.00ft: MUD WEIGHT 8.80
7200.98ft: MUD PH 10.30

7250.98ft: PVT Horn Enabled
7254.99ft: PVT Horn Disabled
7254.99ft: ZDiffPressure from SideKick sk-11-11-0402
7255.25ft: CHECK S.P.R.
7255.94ft: SURVEY AT 7199 INC 10.7 AZI 289.2
7255.94ft: Connection at 7249.5
7255.94ft: ZWOB from SideKick sk-11-11-0402
7256.99ft: IN TALLY: HOLE DEPTH SET TO 7249.5

7276.05ft: SLIDING

7287.30ft: SWEEP

7304.00ft: MUD WEIGHT 8.80
7304.72ft: MUD VIS 42.00

7348.00ft: ZDiffPressure from SideKick sk-11-11-0402
7348.72ft: SURVEY AT 7293 INC 9.3 AZI 289.0
7348.72ft: Connection at 7343.8
7349.02ft: MUD VIS 42.00
7349.02ft: MUD WEIGHT 8.80
7352.00ft: IN TALLY: HOLE DEPTH SET TO 7343.8

7369.03ft: SLIDING

7374.02ft: PVT Horn Disabled
7374.21ft: SWEEP
7375.98ft: PVT Horn Enabled

7394.00ft: MUD VIS 42.00
7394.00ft: MUD WEIGHT 8.90

7441.02ft: SURVEY AT 7388 INC 9.3 AZI 286.5

