



+N/-S
0.0

+E/-W
0.0

Northing
1754570.00

Easting
2196437.40

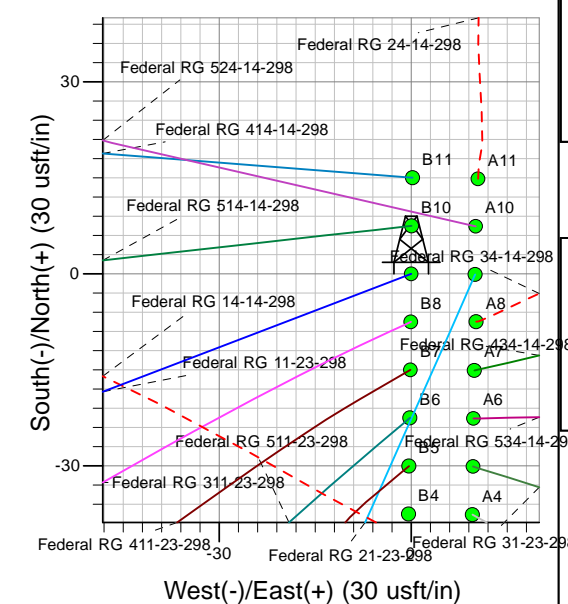
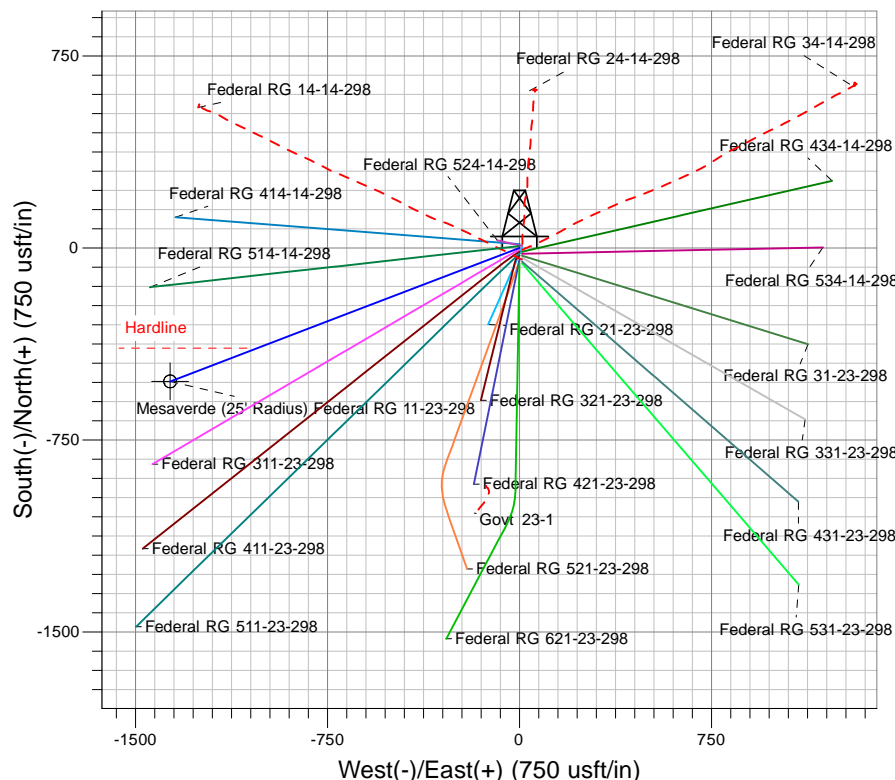
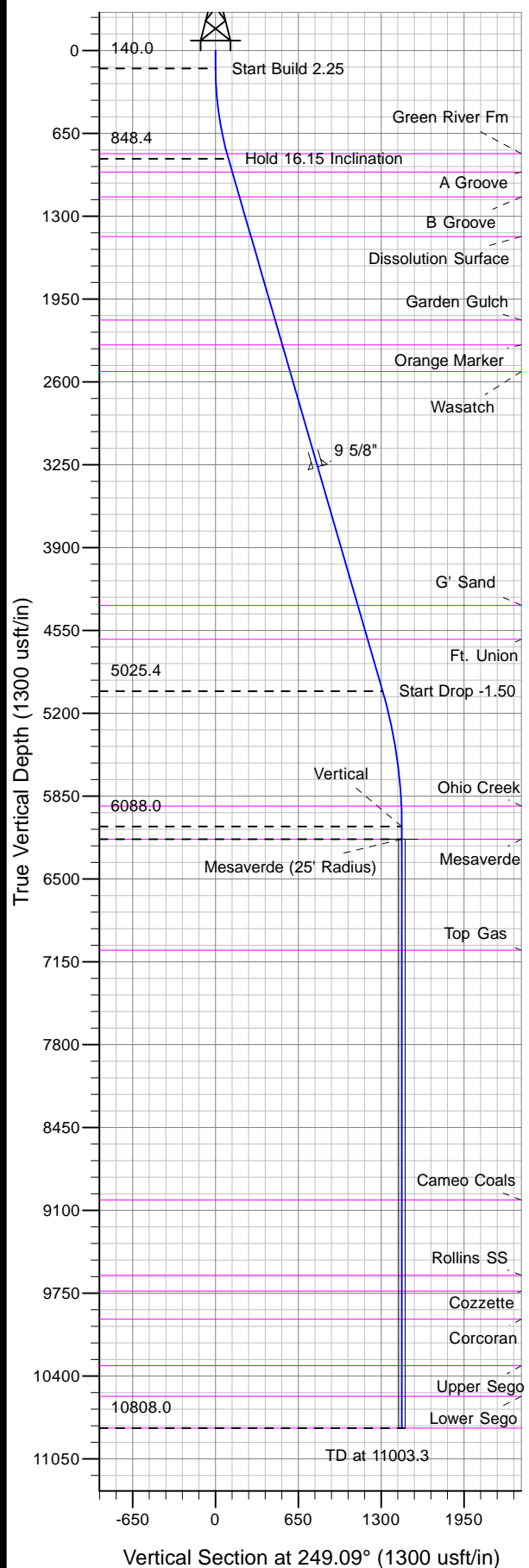
Latitude
39° 52' 13.237 N

Longitude
108° 21' 47.480 W

Slot
B9

Ground Elevation: 6686.0

Well Name: Federal RG 11-23-298
Surface Location: Federal RG 24-14-298 Pad
North American Datum 1983 , US State Plane 1983 , Colorado Central Zone
KELLY BUSHING @ 6708.0usft (Frontier 10 (22' RKB) kjs)



Project: RG 14-02S-098W
Site: Federal RG 24-14-298 Pad
Well: Federal RG 11-23-298
Plan #2 13Apr11 kjs

Compass Rose

North Arrow

Mag. North: 10.72°

Magnetic Field

Strength: 52516.7snT

Dip Angle: 66.01°

Date: 4/16/2010

Model: IGRF2010

ANNOTATIONS

TVD	MD	Inc	Azi	+N/-S	+E/-W	VSec	Departure	Annotation
140.0	140.0	0.00	0.00	0.0	0.0	0.0	0.0	Start Build 2.25
848.4	857.9	16.15	249.09	-35.9	-93.9	100.5	100.5	Hold 16.15 Inclination
5025.4	5206.5	16.15	249.09	-467.6	-1224.0	1310.3	1310.3	Start Drop -1.50
6088.0	6283.3	0.00	0.00	-521.4	-1364.9	1461.1	1461.1	Vertical
6188.0	6383.3	0.00	0.00	-521.4	-1364.9	1461.1	1461.1	Mesaverde
10808.0	11003.3	0.00	0.00	-521.4	-1364.9	1461.1	1461.1	TD at 11003.3