



+N/-S  
0.0

+E/-W  
0.0

Northing  
1754532.10

Easting  
2196445.80

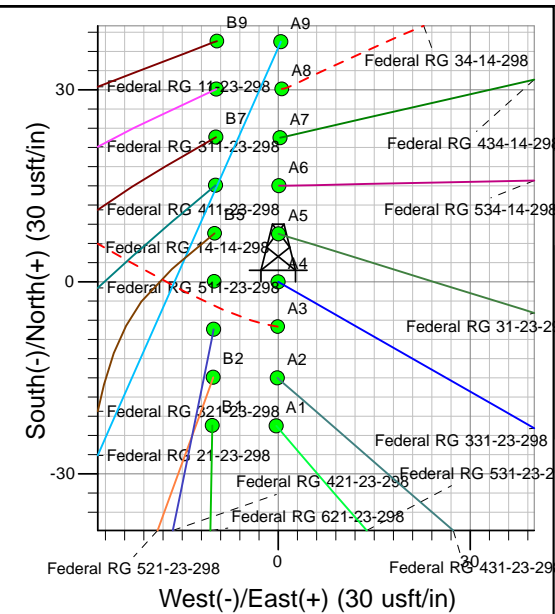
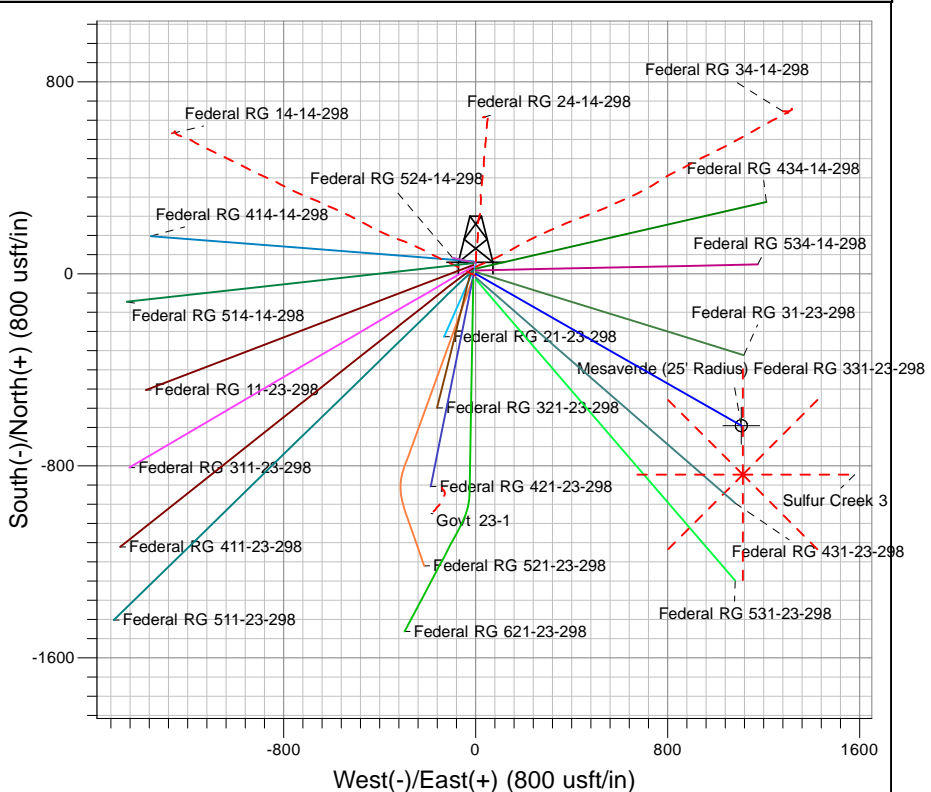
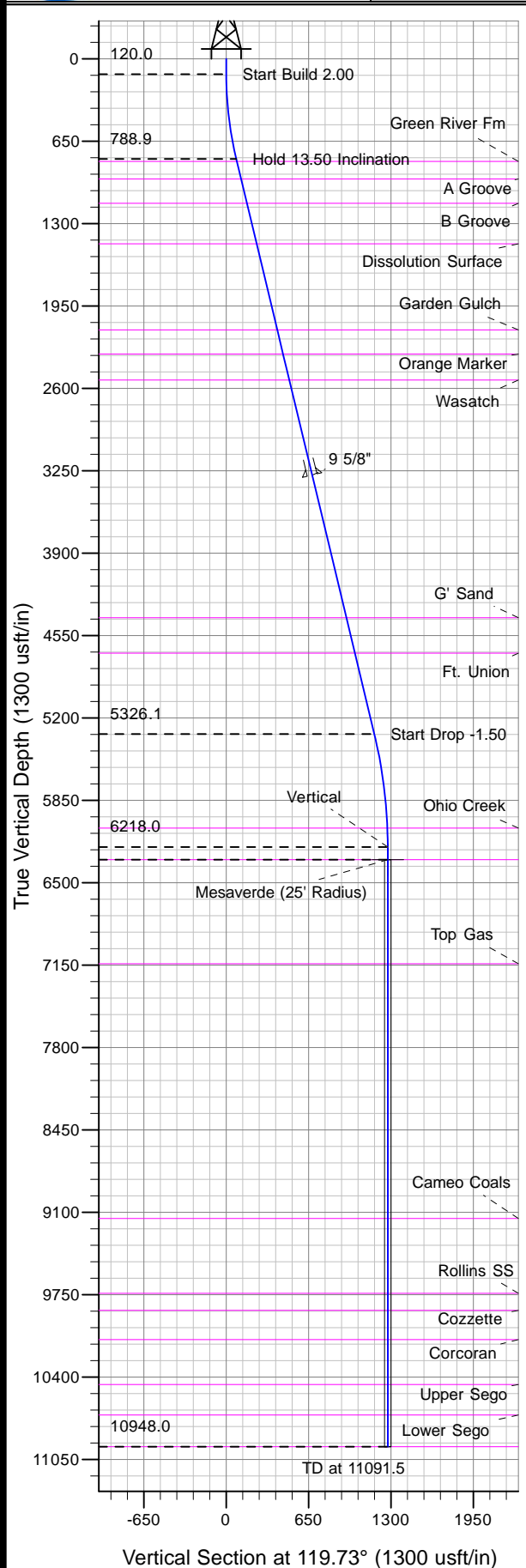
Latitude  
39° 52' 12.865 N

Longitude  
108° 21' 47.357 W

Slot  
A4

Well Name: Federal RG 331-23-298  
Surface Location: Federal RG 24-14-298 Pad  
North American Datum 1983 , US State Plane 1983 , Colorado Central Zone  
Ground Elevation: 6686.0

KELLY BUSHING @ 6708.0usft (Frontier 10 (22' RKB) kjs)



Project: RG 14-02S-098W  
Site: Federal RG 24-14-298 Pad  
Well: Federal RG 331-23-298  
Plan #2 13Apr11 kjs

Asimuths to True North  
Magnetic North: 10.71°  
Magnetic Field  
Strength: 52515.8snT  
Dip Angle: 66.01°  
Date: 4/19/2010  
Model: IGRF2010

#### ANNOTATIONS

TVD	MD	Inc	Azi	+N/-S	+E/-W	VSec	Departure	Annotation
120.0	120.0	0.00	0.00	0.0	0.0	0.0	0.0	Start Build 2.00
788.9	795.2	13.50	119.73	-39.3	68.8	79.2	79.2	Hold 13.50 Inclination
5326.1	5461.3	13.50	119.73	-579.7	1014.9	1168.7	1168.7	Start Drop -1.50
6218.0	6361.5	0.00	0.00	-632.0	1106.5	1274.3	1274.3	Vertical
6318.0	6461.5	0.00	0.00	-632.0	1106.5	1274.3	1274.3	Mesaverde
10948.0	11091.5	0.00	0.00	-632.0	1106.5	1274.3	1274.3	TD at 11091.5