



+N/-S
0.0

+E/-W
0.0

Northing
1754517.50

Easting
2196435.20

Latitude
39° 52' 12.718 N

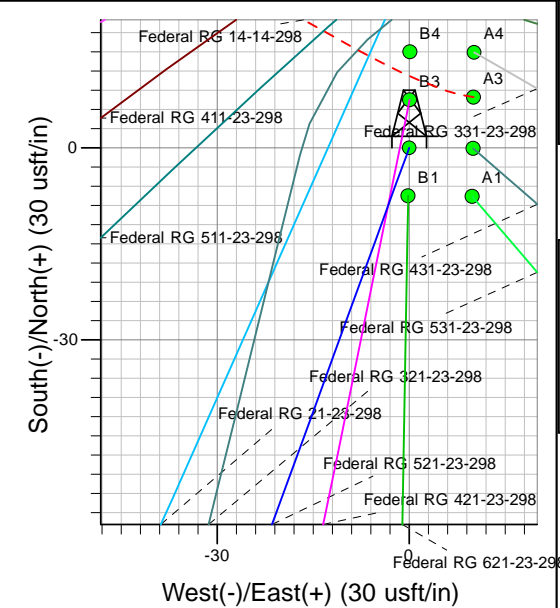
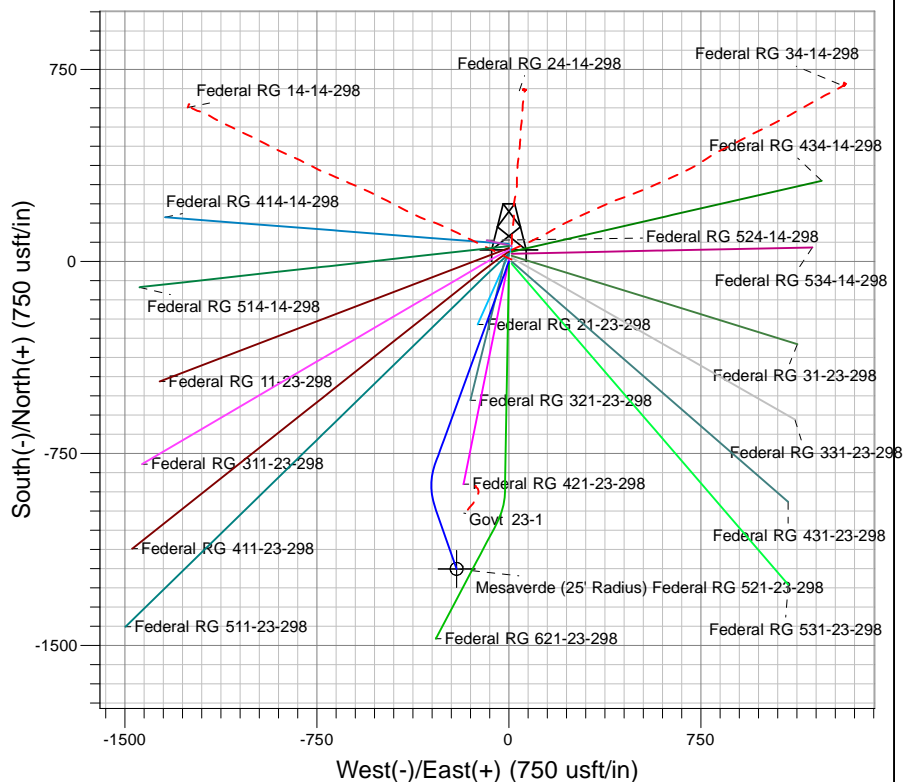
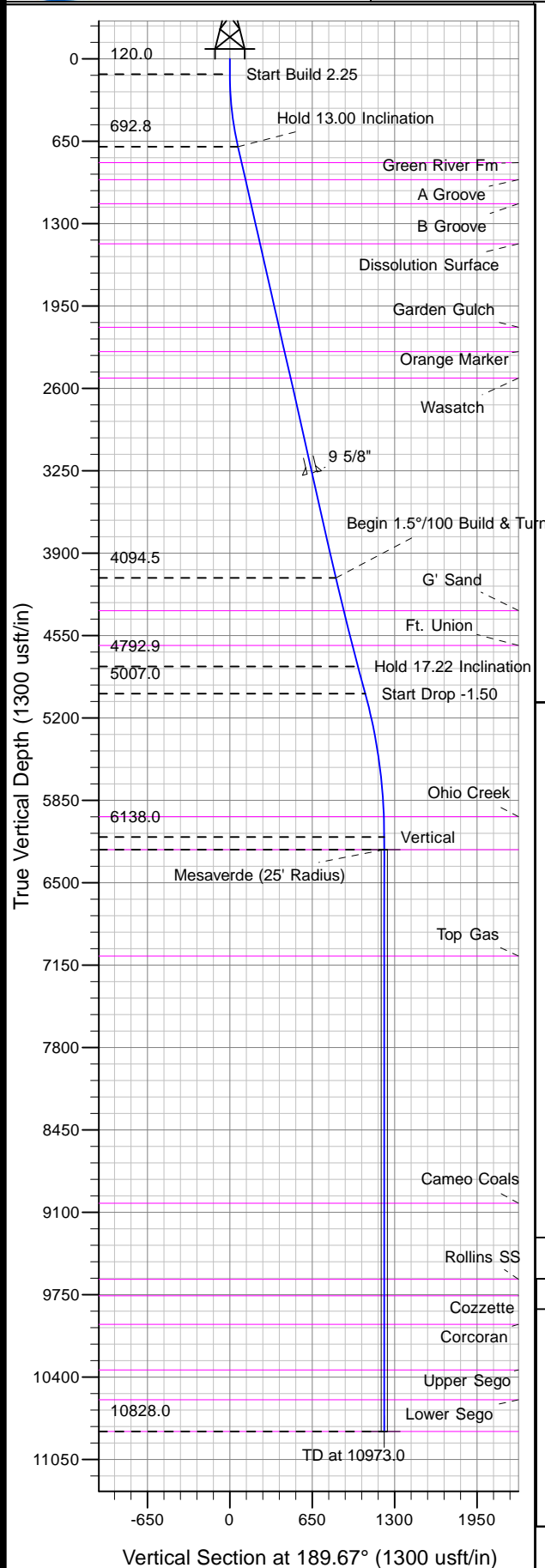
Longitude
108° 21' 47.487 W

Slot
B2

North American Datum 1983 , US State Plane 1983 , Colorado Central Zone

Ground Elevation: 6686.0

KELLY BUSHING @ 6708.0usft (Frontier 10 (22' RKB) kjs)



Project: RG 14-02S-098W
Site: Federal RG 24-14-298 Pad
Well: Federal RG 521-23-298
Plan #2 13Apr11 kjs



Azimuths to True North
Magnetic North: 10.71°

Magnetic Field
Strength: 52515.8nT
Dip Angle: 66.01°
Date: 4/19/2010
Model: IGRF2010

ANNOTATIONS

TVD	MD	Inc	Azi	+N/-S	+E/-W	VSec	Departure	Annotation
120.0	120.0	0.00	0.00	0.0	0.0	0.0	0.0	Start Build 2.25
692.8	697.8	13.00	200.00	-61.3	-22.3	64.2	65.3	Hold 13.00 Inclination
4094.5	4188.9	13.00	200.00	-799.3	-290.9	836.8	850.6	Begin 1.5°/100 Build & Turn
4792.9	4910.7	17.22	160.67	-976.9	-283.3	1010.7	1032.1	Hold 17.22 Inclination
5007.0	5134.8	17.22	160.67	-1039.6	-261.3	1068.7	1098.5	Start Drop -1.50
6138.0	6283.0	0.00	0.00	-1201.2	-204.6	1218.5	1269.8	Vertical
6238.0	6383.0	0.00	0.00	-1201.2	-204.6	1218.5	1269.8	Mesaverde
10828.0	10973.0	0.00	0.00	-1201.2	-204.6	1218.5	1269.8	TD at 10973.0