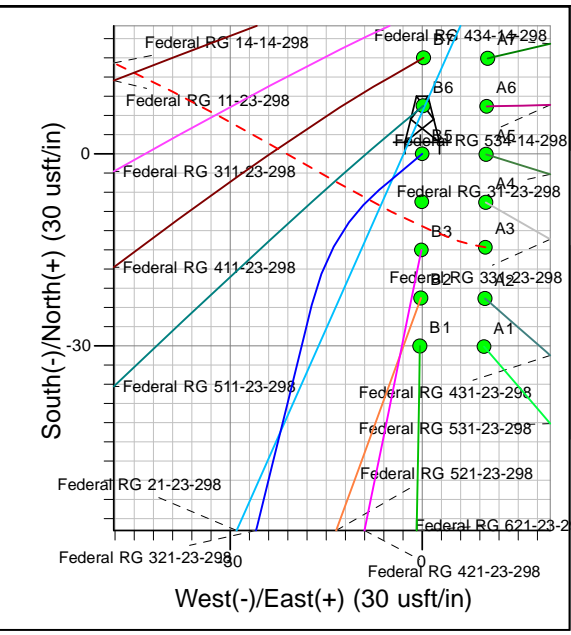
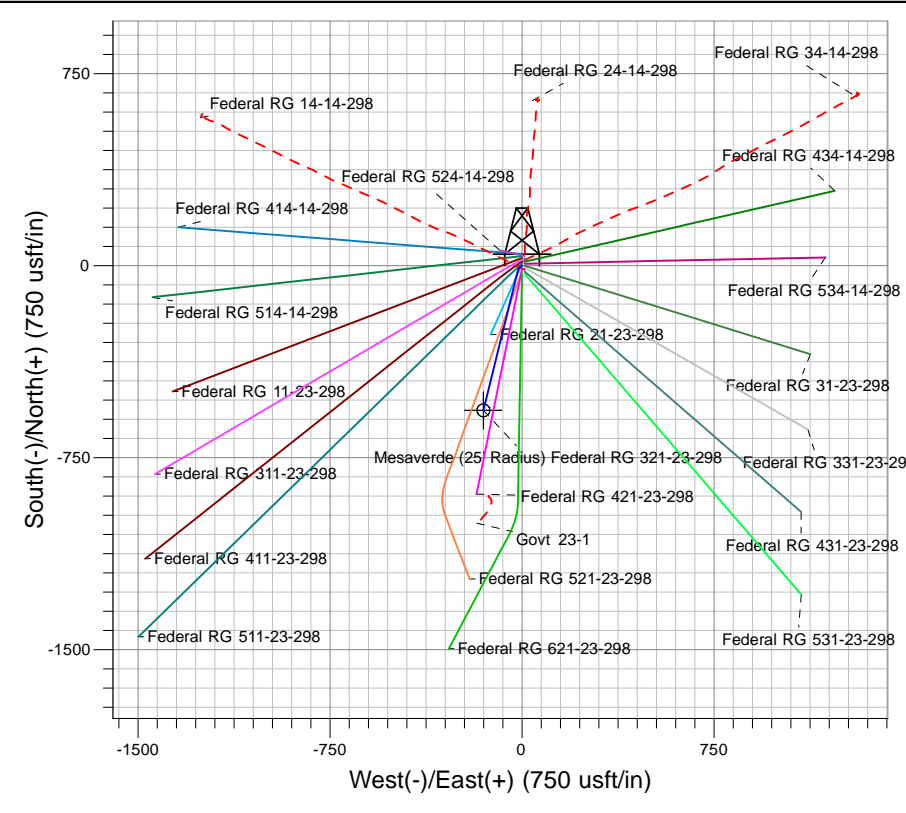
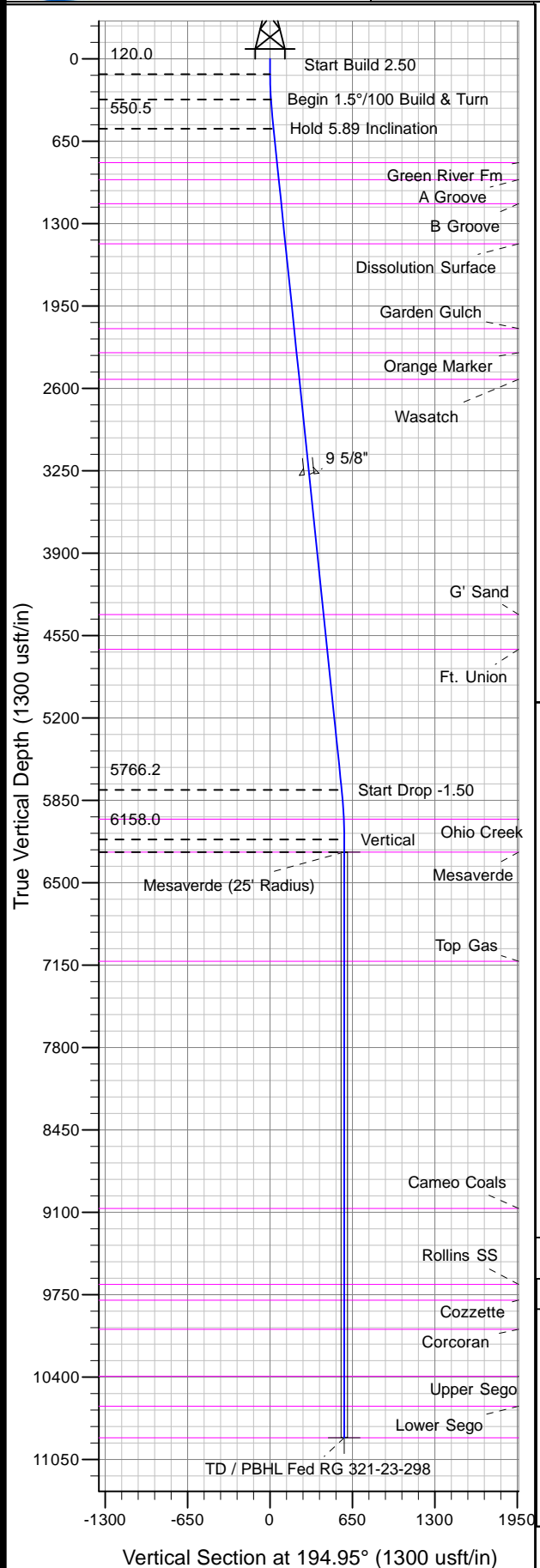




Well Name: Federal RG 321-23-298  
Surface Location: Federal RG 24-14-298 Pad  
North American Datum 1983 , US State Plane 1983 , Colorado Central Zone  
Ground Elevation: 6686.0  
+N/-S +E/-W Northing Easting Latitude Longitude Slot  
0.0 0.0 1754540.00 2196436.10 39° 52' 12.940 N 108° 21' 47.485 W B5  
KELLY BUSHING @ 6708.0usft (Frontier 10 (22' RKB) kjs)



Project: RG 14-02S-098W  
Site: Federal RG 24-14-298 Pad  
Well: Federal RG 321-23-298  
Plan #2 13Apr11 kjs

Compass rose showing True North (T) and Magnetic North (M).  
Azimuths to True North  
Magnetic North: 10.72°  
Magnetic Field  
Strength: 52516.6snT  
Dip Angle: 66.01°  
Date: 4/16/2010  
Model: IGRF2010

ANNOTATIONS									
TVD	MD	Inc	Azi	+N/-S	+E/-W	VSec	Departure	Annotation	
120.0	120.0	0.00	0.00	0.0	0.0	0.0	0.0	Start Build 2.50	
319.7	320.0	5.00	230.00	-5.6	-6.7	7.1	8.7	Begin 1.5°/100 Build & Turn	
550.5	551.7	5.89	193.86	-23.6	-17.3	27.3	30.1	Hold 5.89 Inclination	
5766.2	5795.1	5.89	193.86	-545.8	-146.1	565.0	567.9	Start Drop -1.50	
6158.0	6187.6	0.00	0.00	-565.3	-151.0	585.1	588.0	Vertical	
6258.0	6287.6	0.00	0.00	-565.3	-151.0	585.1	588.0	Mesaverde	
10878.0	10907.6	0.00	0.00	-565.3	-151.0	585.1	588.0	TD at 10907.6	