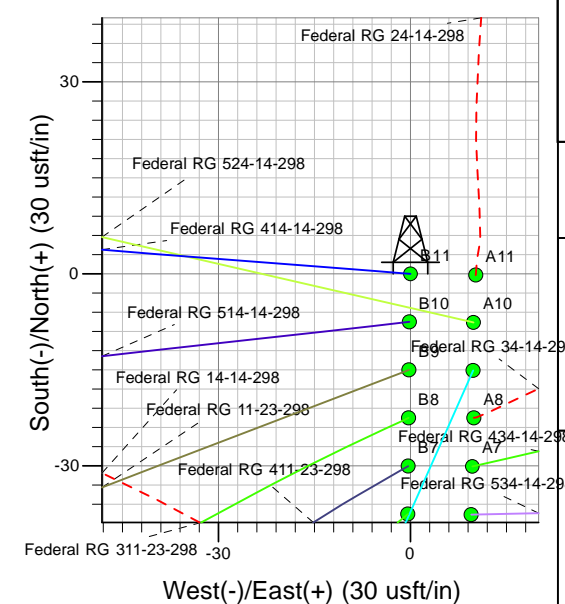
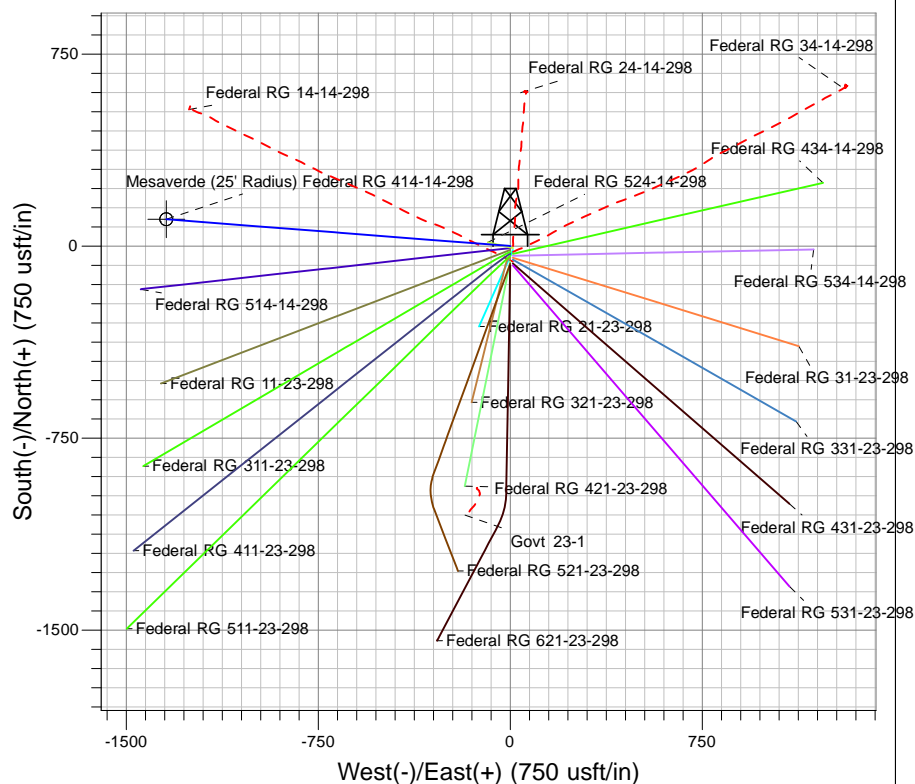
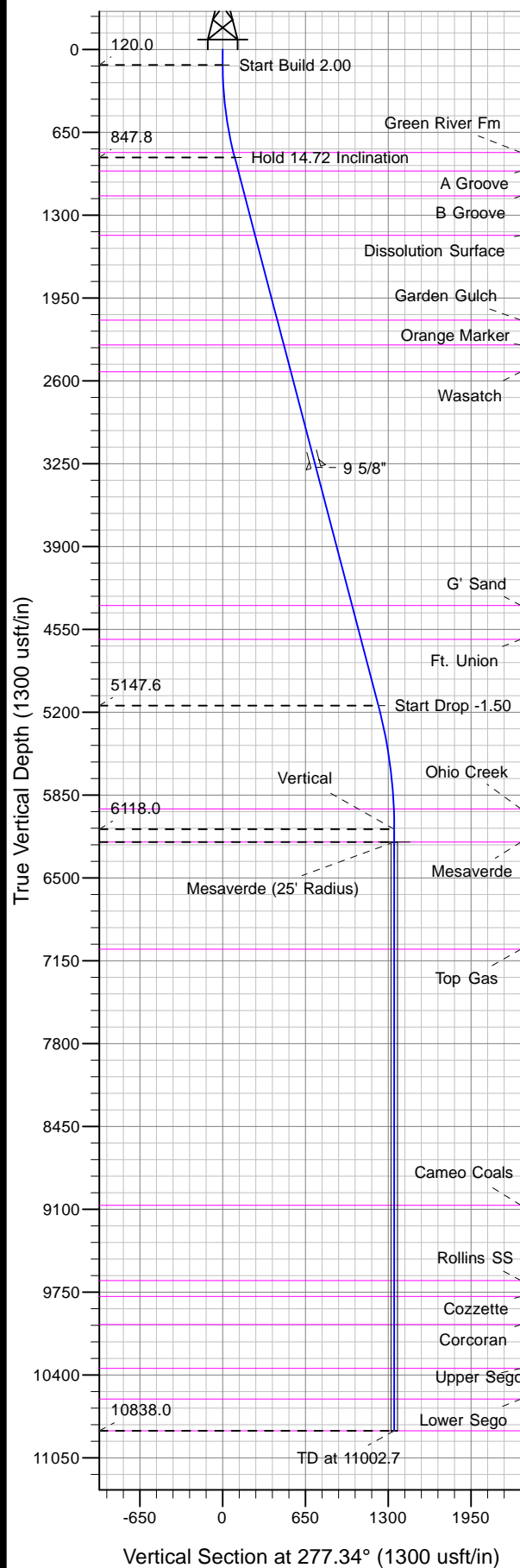




Well Name: Federal RG 414-14-298  
Surface Location: Federal RG 24-14-298 Pad  
North American Datum 1983 , US State Plane 1983 , Colorado Central Zone  
Ground Elevation: 6686.0  
+N/-S +E/-W Northing Easting Latitude Longitude Slot  
0.0 0.0 1754585.00 2196438.10 39° 52' 13.385 N 108° 21' 47.477 W B11  
KELLY BUSHING @ 6708.0usft (Frontier 10 (22' RKB) kjs)



Project: RG 14-02S-098W  
Site: Federal RG 24-14-298 Pad  
Well: Federal RG 414-14-298  
Plan #2 13Apr11 kjs

Asimuths to True North  
Magnetic North: 11.04°  
Magnetic Field  
Strength: 52801.5snT  
Dip Angle: 66.09°  
Date: 8/30/2007  
Model: IGRF2005-10

#### ANNOTATIONS

TVD	MD	Inc	Azi	+N/-S	+E/-W	VSec	Departure	Annotation
120.0	120.0	0.00	0.00	0.0	0.0	0.0	0.0	Start Build 2.00
847.8	855.9	14.72	274.46	7.3	-93.7	93.9	94.0	Hold 14.72 Inclination
5147.6	5301.5	14.72	274.46	95.2	-1219.7	1221.9	1223.4	Start Drop -1.50
6118.0	6282.7	0.00	0.00	105.0	-1344.6	1347.0	1348.7	Vertical
6218.0	6382.7	0.00	0.00	105.0	-1344.6	1347.0	1348.7	Mesaverde
10838.0	11002.7	0.00	0.00	105.0	-1344.6	1347.0	1348.7	TD at 11002.7