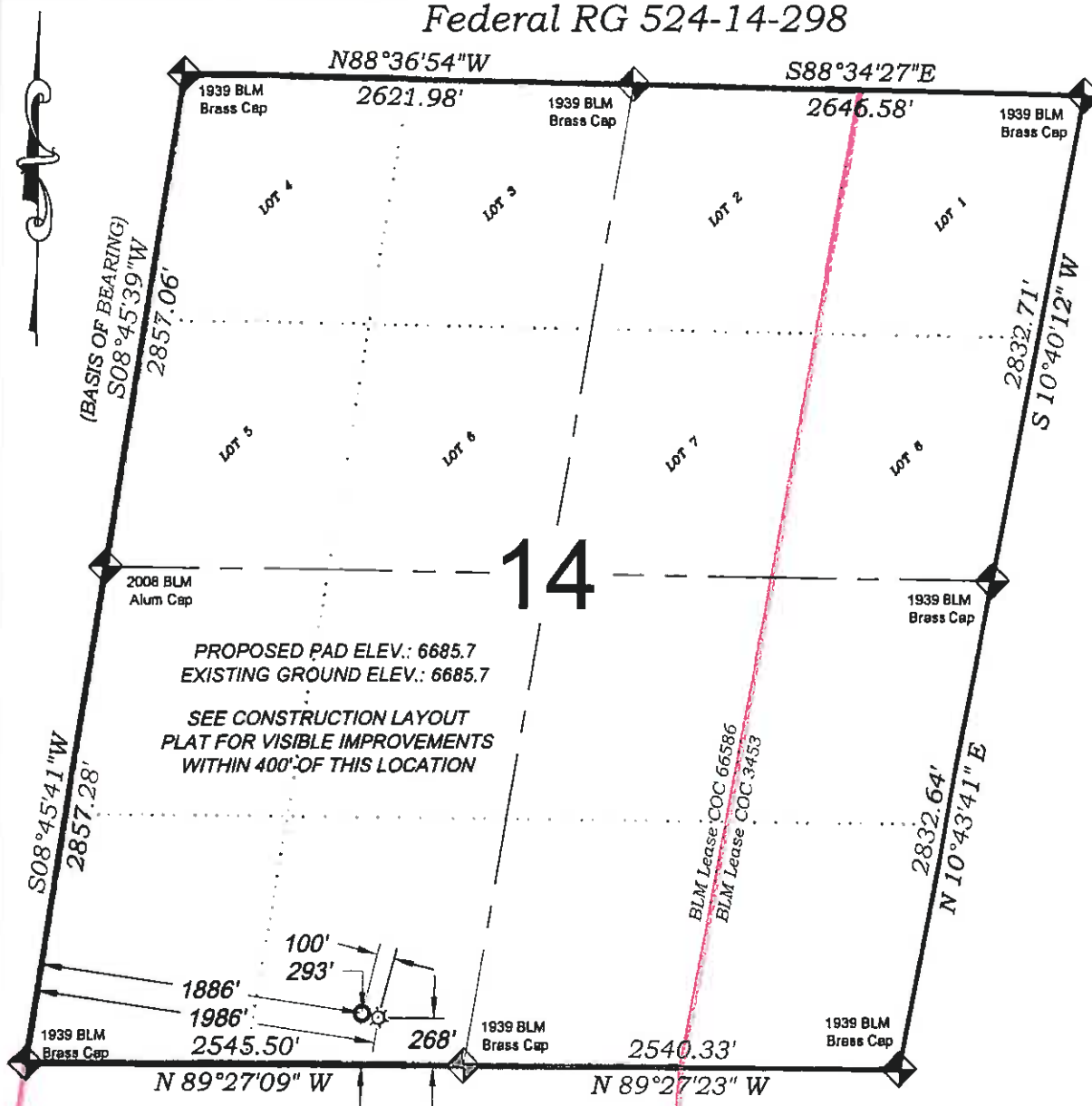


# Federal RG 524-14-298



## SURFACE HOLE LOCATION

268 FSL  
1986 FWL

NAD 83

LATITUDE

39.870364°

LONGITUDE

-108.363153°

NORTHING

1754577.0

EASTING

2196447.7

## BOTTOM HOLE LOCATION

293 FSL  
1886 FWL

NAD 83

LATITUDE

39.870426°

LONGITUDE

-108.363501°

NORTHING

1754602.6

EASTING

2196350.8

## - LEGEND -

FIELD LOCATED SECTION  
MONUMENTS AS DESCRIBED

FIELD SURVEYED  
WELL LOCATION

CALCULATED BOTTOM  
HOLE LOCATION

CALCULATED SECTION  
CORNER LOCATION

## NOTES

- 1) ELEVATIONS BASED ON N.A.V.D. 1988 PUBLISHED COORDINATES.
- 2) LATITUDES AND LONGITUDES ARE BASE ON NAD 83, PUBLISHED COORDINATES.
- 3) STATE PLANE COORDINATES ARE BASED ON COLORADO CENTRAL ZONE, U.S. SURVEY FEET.
- 4) ELEVATION MASK SET TO 15"
- 5) GPS OPERATOR J. KIRKPATRICK, OBSERVED A PDOP OF 1.8 FOR SURVEY POINT NUMBER 30509.
- 6) SURFACE AND BOTTOM HOLE LOCATIONS ARE MEASURED 90° FROM SECTION LINES.

WELL LOCATION PLAT Prepared for:

Williams. Williams Production, RMT

SE1/4 SW1/4, SECTION 14  
T. 2 S., R. 98 W. of the 6th. P.M.  
Rio BLANCO COUNTY, COLORADO

## SURVEYORS STATEMENT

I, MICHAEL J. LANGHORNE, A REGISTERED LAND SURVEYOR IN THE STATE OF COLORADO, DO HEREBY CERTIFY THAT THE SURVEY SHOWN HEREON WAS PREPARED UNDER MY DIRECT SUPERVISION AND HAS BEEN STAKED ON THE GROUND AS SHOWN ON THE PLAT AND CHECKING THAT THIS MAP IS A TRUE REPRESENTATION THEREOF.

MICHAEL J. LANGHORNE, COLORADO REGISTRATION NO. 36572  
FOR AND ON BEHALF OF  
BOOKCLIFF SURVEY SERVICES, INC.

## REFERENCES

- 1) CORRECTIVE DEPENDENT RESURVEY T. 2 S., R. 98 W., 6 th P.M (GLO PLAT)
- 2) U.S.G.S. QUAD. Rock School and Square S Ranch, CO

REVISED: 6/20/11

SURVEY DATE: 3/23/10  
MAP DATE: 6/2/10  
SCALE: 1" = 1000'  
PLAT: 1 of 1  
PROJECT: Williams Highland

1044 East Third Street  
P.O. Box 61450  
Phoenix, AZ 85061-0450  
Phone: (602) 825-2720  
Fax: (602) 825-2723

**BOOKCLIFF**  
Survey Services, Inc.