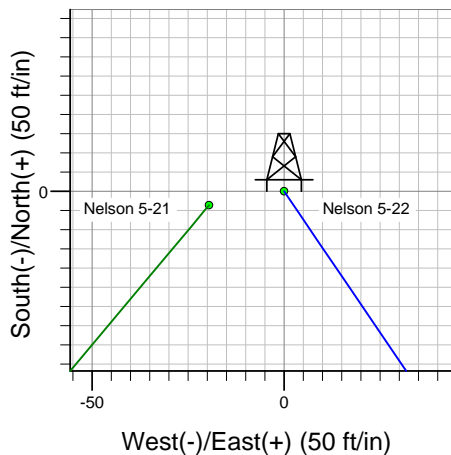
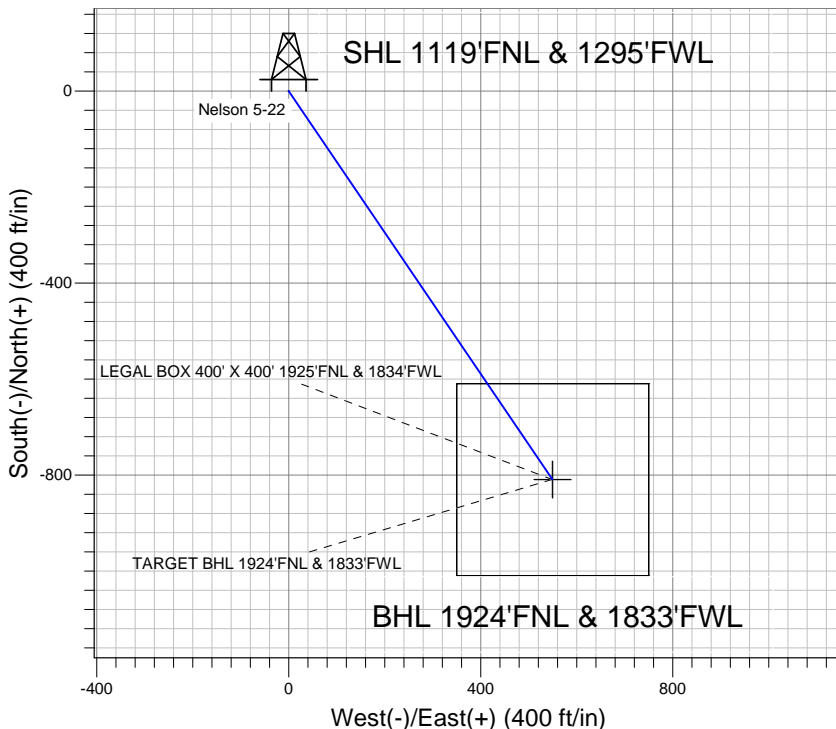
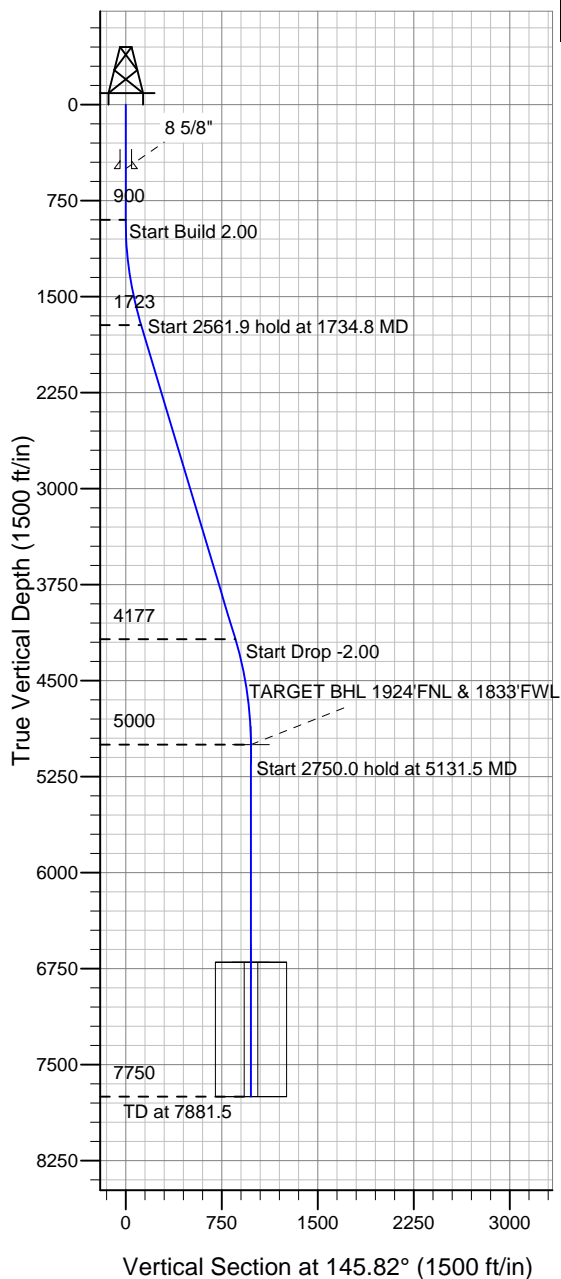


Well Name: Nelson 5-22

Surface Location: Nelson 5-21 Pad Sec.5-T4N-R67W
 North American Datum 1983, US State Plane 1983 Colorado Northern Zone
 Ground Elevation: 4850.0
 +N/-S 0.0 +E/-W 0.0 Northing 1369411.36 Easting 3161889.34 Latitude 40.345980 Longitude -104.919190 Slot
 Original Well EleWELL @ 4863.0ft (Original Well Elev)

TRILLOGY RESOURCES, LLC. Weld County, CO



Nelson 5-21 Pad Sec.5-T4N-R67W
 Nelson 5-22
 Plan #1 (9-21-11)
 12:11, September 22 2011



Azimuths to True North
 Magnetic North: 8.91°
 Magnetic Field
 Strength: 53057.8snT
 Dip Angle: 66.97°
 Date: 9/21/2011
 Model: IGRF2010

WELLBORE TARGET DETAILS (LAT/LONG)

Name	TVD	+N/-S	+E/-W	Latitude	Longitude	Shape
TARGET BHL 1924'FNL & 1833'FWL	5000.0	-808.7	549.1	40.343760	-104.917220	Point
LEGAL BOX 400' X 400' 1925'FNL & 1834'FWL	6700.0	-809.8	550.1	40.343757	-104.917217	Rectangle (Sides: L400.0 W400.0)

SECTION DETAILS

Sec	MD	Inc	Azi	TVD	+N/-S	+E/-W	DLeg	TFace	VSec	Target
1	0.0	0.00	0.00	0.0	0.0	0.0	0.00	0.00	0.0	
2	900.0	0.00	0.00	900.0	0.0	0.0	0.00	0.00	0.0	
3	1734.8	16.70	145.82	1723.0	-99.9	67.8	2.00	145.82	120.8	
4	4296.7	16.70	145.82	4177.0	-708.8	481.3	0.00	0.00	856.8	
5	5131.5	0.00	0.00	5000.0	-808.7	549.1	2.00	180.00	977.6	TARGET BHL 1924'FNL & 1833'FWL
6	7881.5	0.00	0.00	7750.0	-808.7	549.1	0.00	0.00	977.6	



TRILLOGY RESOURCES, LLC. Weld County, CO

SEC.5-T4N-R67W

Nelson 5-21 Pad Sec.5-T4N-R67W

Nelson 5-22

Wellbore #1

Plan: Plan #1 (9-21-11)

Standard Planning Report

22 September, 2011

Database:	Landmark	Local Co-ordinate Reference:	Well Nelson 5-22
Company:	TRILLOGY RESOURCES, LLC. Weld County, CO	TVD Reference:	WELL @ 4863.0ft (Original Well Elev)
Project:	SEC.5-T4N-R67W	MD Reference:	WELL @ 4863.0ft (Original Well Elev)
Site:	Nelson 5-21 Pad Sec.5-T4N-R67W	North Reference:	True
Well:	Nelson 5-22	Survey Calculation Method:	Minimum Curvature
Wellbore:	Wellbore #1		
Design:	Plan #1 (9-21-11)		

Project	SEC.5-T4N-R67W, Weld County, CO		
Map System:	US State Plane 1983	System Datum:	Mean Sea Level
Geo Datum:	North American Datum 1983		Using Well Reference Point
Map Zone:	Colorado Northern Zone		Using geodetic scale factor

Site	Nelson 5-21 Pad Sec.5-T4N-R67W		
Site Position:		Northing:	1,369,407.60 ft
From:	Lat/Long	Easting:	3,161,869.85 ft
Position Uncertainty:	0.0 ft	Slot Radius:	"
		Latitude:	40.345970
		Longitude:	-104.919260
		Grid Convergence:	0.38 °

Well	Nelson 5-22		
Well Position	+N/-S	3.6 ft	Northing:
	+E/-W	19.5 ft	Easting:
Position Uncertainty		0.0 ft	Wellhead Elevation:
			ft
			Latitude:
			40.345980
			Longitude:
			-104.919190
			Ground Level:
			4,850.0 ft

Wellbore	Wellbore #1				
Magnetics	Model Name	Sample Date	Declination (°)	Dip Angle (°)	Field Strength (nT)
	IGRF2010	9/21/2011	8.91	66.97	53,058

Design	Plan #1 (9-21-11)			
Audit Notes:				
Version:	Phase:	PROTOTYPE	Tie On Depth:	0.0
Vertical Section:	Depth From (TVD) (ft)	+N/-S (ft)	+E/-W (ft)	Direction (°)
	0.0	0.0	0.0	145.82

Plan Sections										
Measured Depth (ft)	Inclination (°)	Azimuth (°)	Vertical Depth (ft)	+N/-S (ft)	+E/-W (ft)	Dogleg Rate (°/100ft)	Build Rate (°/100ft)	Turn Rate (°/100ft)	TFO (°)	Target
0.0	0.00	0.00	0.0	0.0	0.0	0.00	0.00	0.00	0.00	
900.0	0.00	0.00	900.0	0.0	0.0	0.00	0.00	0.00	0.00	
1,734.8	16.70	145.82	1,723.0	-99.9	67.8	2.00	2.00	0.00	145.82	
4,296.7	16.70	145.82	4,177.0	-708.8	481.3	0.00	0.00	0.00	0.00	
5,131.5	0.00	0.00	5,000.0	-808.7	549.1	2.00	-2.00	0.00	180.00	TARGET BHL 1924
7,881.5	0.00	0.00	7,750.0	-808.7	549.1	0.00	0.00	0.00	0.00	

Database:	Landmark	Local Co-ordinate Reference:	Well Nelson 5-22
Company:	TRILLOGY RESOURCES, LLC. Weld County, CO	TVD Reference:	WELL @ 4863.0ft (Original Well Elev)
Project:	SEC.5-T4N-R67W	MD Reference:	WELL @ 4863.0ft (Original Well Elev)
Site:	Nelson 5-21 Pad Sec.5-T4N-R67W	North Reference:	True
Well:	Nelson 5-22	Survey Calculation Method:	Minimum Curvature
Wellbore:	Wellbore #1		
Design:	Plan #1 (9-21-11)		

Planned Survey									
Measured Depth (ft)	Inclination (°)	Azimuth (°)	Vertical Depth (ft)	+N/-S (ft)	+E/-W (ft)	Vertical Section (ft)	Dogleg Rate (°/100ft)	Build Rate (°/100ft)	Turn Rate (°/100ft)
0.0	0.00	0.00	0.0	0.0	0.0	0.0	0.00	0.00	0.00
40.0	0.00	0.00	40.0	0.0	0.0	0.0	0.00	0.00	0.00
80.0	0.00	0.00	80.0	0.0	0.0	0.0	0.00	0.00	0.00
120.0	0.00	0.00	120.0	0.0	0.0	0.0	0.00	0.00	0.00
160.0	0.00	0.00	160.0	0.0	0.0	0.0	0.00	0.00	0.00
200.0	0.00	0.00	200.0	0.0	0.0	0.0	0.00	0.00	0.00
240.0	0.00	0.00	240.0	0.0	0.0	0.0	0.00	0.00	0.00
280.0	0.00	0.00	280.0	0.0	0.0	0.0	0.00	0.00	0.00
320.0	0.00	0.00	320.0	0.0	0.0	0.0	0.00	0.00	0.00
360.0	0.00	0.00	360.0	0.0	0.0	0.0	0.00	0.00	0.00
400.0	0.00	0.00	400.0	0.0	0.0	0.0	0.00	0.00	0.00
440.0	0.00	0.00	440.0	0.0	0.0	0.0	0.00	0.00	0.00
480.0	0.00	0.00	480.0	0.0	0.0	0.0	0.00	0.00	0.00
500.0	0.00	0.00	500.0	0.0	0.0	0.0	0.00	0.00	0.00
8 5/8"									
520.0	0.00	0.00	520.0	0.0	0.0	0.0	0.00	0.00	0.00
560.0	0.00	0.00	560.0	0.0	0.0	0.0	0.00	0.00	0.00
600.0	0.00	0.00	600.0	0.0	0.0	0.0	0.00	0.00	0.00
640.0	0.00	0.00	640.0	0.0	0.0	0.0	0.00	0.00	0.00
680.0	0.00	0.00	680.0	0.0	0.0	0.0	0.00	0.00	0.00
720.0	0.00	0.00	720.0	0.0	0.0	0.0	0.00	0.00	0.00
760.0	0.00	0.00	760.0	0.0	0.0	0.0	0.00	0.00	0.00
800.0	0.00	0.00	800.0	0.0	0.0	0.0	0.00	0.00	0.00
840.0	0.00	0.00	840.0	0.0	0.0	0.0	0.00	0.00	0.00
880.0	0.00	0.00	880.0	0.0	0.0	0.0	0.00	0.00	0.00
900.0	0.00	0.00	900.0	0.0	0.0	0.0	0.00	0.00	0.00
920.0	0.40	145.82	920.0	-0.1	0.0	0.1	2.00	2.00	0.00
960.0	1.20	145.82	960.0	-0.5	0.4	0.6	2.00	2.00	0.00
1,000.0	2.00	145.82	1,000.0	-1.4	1.0	1.7	2.00	2.00	0.00
1,040.0	2.80	145.82	1,039.9	-2.8	1.9	3.4	2.00	2.00	0.00
1,080.0	3.60	145.82	1,079.9	-4.7	3.2	5.7	2.00	2.00	0.00
1,120.0	4.40	145.82	1,119.8	-7.0	4.7	8.4	2.00	2.00	0.00
1,160.0	5.20	145.82	1,159.6	-9.8	6.6	11.8	2.00	2.00	0.00
1,200.0	6.00	145.82	1,199.5	-13.0	8.8	15.7	2.00	2.00	0.00
1,240.0	6.80	145.82	1,239.2	-16.7	11.3	20.2	2.00	2.00	0.00
1,280.0	7.60	145.82	1,278.9	-20.8	14.1	25.2	2.00	2.00	0.00
1,320.0	8.40	145.82	1,318.5	-25.4	17.3	30.7	2.00	2.00	0.00
1,360.0	9.20	145.82	1,358.0	-30.5	20.7	36.9	2.00	2.00	0.00
1,400.0	10.00	145.82	1,397.5	-36.0	24.4	43.5	2.00	2.00	0.00
1,440.0	10.80	145.82	1,436.8	-42.0	28.5	50.7	2.00	2.00	0.00
1,480.0	11.60	145.82	1,476.0	-48.4	32.9	58.5	2.00	2.00	0.00
1,520.0	12.40	145.82	1,515.2	-55.3	37.5	66.8	2.00	2.00	0.00
1,560.0	13.20	145.82	1,554.2	-62.6	42.5	75.7	2.00	2.00	0.00
1,600.0	14.00	145.82	1,593.1	-70.4	47.8	85.1	2.00	2.00	0.00
1,640.0	14.80	145.82	1,631.8	-78.6	53.4	95.0	2.00	2.00	0.00
1,680.0	15.60	145.82	1,670.4	-87.3	59.3	105.5	2.00	2.00	0.00
1,720.0	16.40	145.82	1,708.8	-96.4	65.5	116.6	2.00	2.00	0.00
1,734.8	16.70	145.82	1,723.0	-99.9	67.8	120.8	2.00	2.00	0.00
1,760.0	16.70	145.82	1,747.2	-105.9	71.9	128.0	0.00	0.00	0.00
1,800.0	16.70	145.82	1,785.5	-115.4	78.4	139.5	0.00	0.00	0.00
1,840.0	16.70	145.82	1,823.8	-124.9	84.8	151.0	0.00	0.00	0.00
1,880.0	16.70	145.82	1,862.1	-134.4	91.3	162.5	0.00	0.00	0.00
1,920.0	16.70	145.82	1,900.4	-143.9	97.7	174.0	0.00	0.00	0.00

Database:	Landmark	Local Co-ordinate Reference:	Well Nelson 5-22
Company:	TRILLOGY RESOURCES, LLC. Weld County, CO	TVD Reference:	WELL @ 4863.0ft (Original Well Elev)
Project:	SEC.5-T4N-R67W	MD Reference:	WELL @ 4863.0ft (Original Well Elev)
Site:	Nelson 5-21 Pad Sec.5-T4N-R67W	North Reference:	True
Well:	Nelson 5-22	Survey Calculation Method:	Minimum Curvature
Wellbore:	Wellbore #1		
Design:	Plan #1 (9-21-11)		

Planned Survey									
Measured Depth (ft)	Inclination (°)	Azimuth (°)	Vertical Depth (ft)	+N/-S (ft)	+E/-W (ft)	Vertical Section (ft)	Dogleg Rate (°/100ft)	Build Rate (°/100ft)	Turn Rate (°/100ft)
1,960.0	16.70	145.82	1,938.7	-153.4	104.2	185.5	0.00	0.00	0.00
2,000.0	16.70	145.82	1,977.1	-162.9	110.6	197.0	0.00	0.00	0.00
2,040.0	16.70	145.82	2,015.4	-172.5	117.1	208.5	0.00	0.00	0.00
2,080.0	16.70	145.82	2,053.7	-182.0	123.6	219.9	0.00	0.00	0.00
2,120.0	16.70	145.82	2,092.0	-191.5	130.0	231.4	0.00	0.00	0.00
2,160.0	16.70	145.82	2,130.3	-201.0	136.5	242.9	0.00	0.00	0.00
2,200.0	16.70	145.82	2,168.6	-210.5	142.9	254.4	0.00	0.00	0.00
2,240.0	16.70	145.82	2,206.9	-220.0	149.4	265.9	0.00	0.00	0.00
2,280.0	16.70	145.82	2,245.3	-229.5	155.8	277.4	0.00	0.00	0.00
2,320.0	16.70	145.82	2,283.6	-239.0	162.3	288.9	0.00	0.00	0.00
2,360.0	16.70	145.82	2,321.9	-248.5	168.7	300.4	0.00	0.00	0.00
2,400.0	16.70	145.82	2,360.2	-258.0	175.2	311.9	0.00	0.00	0.00
2,440.0	16.70	145.82	2,398.5	-267.5	181.7	323.4	0.00	0.00	0.00
2,480.0	16.70	145.82	2,436.8	-277.0	188.1	334.9	0.00	0.00	0.00
2,520.0	16.70	145.82	2,475.1	-286.5	194.6	346.4	0.00	0.00	0.00
2,560.0	16.70	145.82	2,513.4	-296.0	201.0	357.8	0.00	0.00	0.00
2,600.0	16.70	145.82	2,551.8	-305.6	207.5	369.3	0.00	0.00	0.00
2,640.0	16.70	145.82	2,590.1	-315.1	213.9	380.8	0.00	0.00	0.00
2,680.0	16.70	145.82	2,628.4	-324.6	220.4	392.3	0.00	0.00	0.00
2,720.0	16.70	145.82	2,666.7	-334.1	226.8	403.8	0.00	0.00	0.00
2,760.0	16.70	145.82	2,705.0	-343.6	233.3	415.3	0.00	0.00	0.00
2,800.0	16.70	145.82	2,743.3	-353.1	239.8	426.8	0.00	0.00	0.00
2,840.0	16.70	145.82	2,781.6	-362.6	246.2	438.3	0.00	0.00	0.00
2,880.0	16.70	145.82	2,820.0	-372.1	252.7	449.8	0.00	0.00	0.00
2,920.0	16.70	145.82	2,858.3	-381.6	259.1	461.3	0.00	0.00	0.00
2,960.0	16.70	145.82	2,896.6	-391.1	265.6	472.8	0.00	0.00	0.00
3,000.0	16.70	145.82	2,934.9	-400.6	272.0	484.3	0.00	0.00	0.00
3,040.0	16.70	145.82	2,973.2	-410.1	278.5	495.7	0.00	0.00	0.00
3,080.0	16.70	145.82	3,011.5	-419.6	284.9	507.2	0.00	0.00	0.00
3,120.0	16.70	145.82	3,049.8	-429.1	291.4	518.7	0.00	0.00	0.00
3,160.0	16.70	145.82	3,088.2	-438.7	297.8	530.2	0.00	0.00	0.00
3,200.0	16.70	145.82	3,126.5	-448.2	304.3	541.7	0.00	0.00	0.00
3,240.0	16.70	145.82	3,164.8	-457.7	310.8	553.2	0.00	0.00	0.00
3,280.0	16.70	145.82	3,203.1	-467.2	317.2	564.7	0.00	0.00	0.00
3,320.0	16.70	145.82	3,241.4	-476.7	323.7	576.2	0.00	0.00	0.00
3,360.0	16.70	145.82	3,279.7	-486.2	330.1	587.7	0.00	0.00	0.00
3,400.0	16.70	145.82	3,318.0	-495.7	336.6	599.2	0.00	0.00	0.00
3,440.0	16.70	145.82	3,356.4	-505.2	343.0	610.7	0.00	0.00	0.00
3,480.0	16.70	145.82	3,394.7	-514.7	349.5	622.2	0.00	0.00	0.00
3,520.0	16.70	145.82	3,433.0	-524.2	355.9	633.6	0.00	0.00	0.00
3,560.0	16.70	145.82	3,471.3	-533.7	362.4	645.1	0.00	0.00	0.00
3,600.0	16.70	145.82	3,509.6	-543.2	368.9	656.6	0.00	0.00	0.00
3,640.0	16.70	145.82	3,547.9	-552.7	375.3	668.1	0.00	0.00	0.00
3,680.0	16.70	145.82	3,586.2	-562.2	381.8	679.6	0.00	0.00	0.00
3,720.0	16.70	145.82	3,624.5	-571.8	388.2	691.1	0.00	0.00	0.00
3,760.0	16.70	145.82	3,662.9	-581.3	394.7	702.6	0.00	0.00	0.00
3,800.0	16.70	145.82	3,701.2	-590.8	401.1	714.1	0.00	0.00	0.00
3,840.0	16.70	145.82	3,739.5	-600.3	407.6	725.6	0.00	0.00	0.00
3,880.0	16.70	145.82	3,777.8	-609.8	414.0	737.1	0.00	0.00	0.00
3,920.0	16.70	145.82	3,816.1	-619.3	420.5	748.6	0.00	0.00	0.00
3,960.0	16.70	145.82	3,854.4	-628.8	427.0	760.1	0.00	0.00	0.00
4,000.0	16.70	145.82	3,892.7	-638.3	433.4	771.5	0.00	0.00	0.00
4,040.0	16.70	145.82	3,931.1	-647.8	439.9	783.0	0.00	0.00	0.00

Database:	Landmark	Local Co-ordinate Reference:	Well Nelson 5-22
Company:	TRILLOGY RESOURCES, LLC. Weld County, CO	TVD Reference:	WELL @ 4863.0ft (Original Well Elev)
Project:	SEC.5-T4N-R67W	MD Reference:	WELL @ 4863.0ft (Original Well Elev)
Site:	Nelson 5-21 Pad Sec.5-T4N-R67W	North Reference:	True
Well:	Nelson 5-22	Survey Calculation Method:	Minimum Curvature
Wellbore:	Wellbore #1		
Design:	Plan #1 (9-21-11)		

Planned Survey									
Measured Depth (ft)	Inclination (°)	Azimuth (°)	Vertical Depth (ft)	+N/-S (ft)	+E/-W (ft)	Vertical Section (ft)	Dogleg Rate (°/100ft)	Build Rate (°/100ft)	Turn Rate (°/100ft)
4,080.0	16.70	145.82	3,969.4	-657.3	446.3	794.5	0.00	0.00	0.00
4,120.0	16.70	145.82	4,007.7	-666.8	452.8	806.0	0.00	0.00	0.00
4,160.0	16.70	145.82	4,046.0	-676.3	459.2	817.5	0.00	0.00	0.00
4,200.0	16.70	145.82	4,084.3	-685.8	465.7	829.0	0.00	0.00	0.00
4,240.0	16.70	145.82	4,122.6	-695.3	472.1	840.5	0.00	0.00	0.00
4,280.0	16.70	145.82	4,160.9	-704.9	478.6	852.0	0.00	0.00	0.00
4,296.7	16.70	145.82	4,177.0	-708.8	481.3	856.8	0.00	0.00	0.00
4,320.0	16.23	145.82	4,199.3	-714.3	485.0	863.4	2.00	-2.00	0.00
4,360.0	15.43	145.82	4,237.8	-723.3	491.1	874.3	2.00	-2.00	0.00
4,400.0	14.63	145.82	4,276.4	-731.9	497.0	884.7	2.00	-2.00	0.00
4,440.0	13.83	145.82	4,315.2	-740.0	502.5	894.5	2.00	-2.00	0.00
4,480.0	13.03	145.82	4,354.1	-747.7	507.7	903.8	2.00	-2.00	0.00
4,520.0	12.23	145.82	4,393.1	-755.0	512.6	912.5	2.00	-2.00	0.00
4,560.0	11.43	145.82	4,432.3	-761.7	517.2	920.7	2.00	-2.00	0.00
4,600.0	10.63	145.82	4,471.5	-768.1	521.5	928.4	2.00	-2.00	0.00
4,640.0	9.83	145.82	4,510.9	-773.9	525.5	935.5	2.00	-2.00	0.00
4,680.0	9.03	145.82	4,550.3	-779.4	529.2	942.1	2.00	-2.00	0.00
4,720.0	8.23	145.82	4,589.9	-784.3	532.6	948.1	2.00	-2.00	0.00
4,760.0	7.43	145.82	4,629.5	-788.8	535.6	953.5	2.00	-2.00	0.00
4,800.0	6.63	145.82	4,669.2	-792.9	538.4	958.4	2.00	-2.00	0.00
4,840.0	5.83	145.82	4,709.0	-796.5	540.8	962.7	2.00	-2.00	0.00
4,880.0	5.03	145.82	4,748.8	-799.6	542.9	966.5	2.00	-2.00	0.00
4,920.0	4.23	145.82	4,788.7	-802.3	544.8	969.8	2.00	-2.00	0.00
4,960.0	3.43	145.82	4,828.6	-804.5	546.3	972.4	2.00	-2.00	0.00
5,000.0	2.63	145.82	4,868.5	-806.2	547.4	974.5	2.00	-2.00	0.00
5,040.0	1.83	145.82	4,908.5	-807.5	548.3	976.1	2.00	-2.00	0.00
5,080.0	1.03	145.82	4,948.5	-808.4	548.9	977.1	2.00	-2.00	0.00
5,120.0	0.23	145.82	4,988.5	-808.7	549.1	977.5	2.00	-2.00	0.00
5,131.5	0.00	0.00	5,000.0	-808.7	549.1	977.6	2.00	-2.00	0.00
TARGET BHL 1924'FNL & 1833'FWL									
5,160.0	0.00	0.00	5,028.5	-808.7	549.1	977.6	0.00	0.00	0.00
5,200.0	0.00	0.00	5,068.5	-808.7	549.1	977.6	0.00	0.00	0.00
5,240.0	0.00	0.00	5,108.5	-808.7	549.1	977.6	0.00	0.00	0.00
5,280.0	0.00	0.00	5,148.5	-808.7	549.1	977.6	0.00	0.00	0.00
5,320.0	0.00	0.00	5,188.5	-808.7	549.1	977.6	0.00	0.00	0.00
5,360.0	0.00	0.00	5,228.5	-808.7	549.1	977.6	0.00	0.00	0.00
5,400.0	0.00	0.00	5,268.5	-808.7	549.1	977.6	0.00	0.00	0.00
5,440.0	0.00	0.00	5,308.5	-808.7	549.1	977.6	0.00	0.00	0.00
5,480.0	0.00	0.00	5,348.5	-808.7	549.1	977.6	0.00	0.00	0.00
5,520.0	0.00	0.00	5,388.5	-808.7	549.1	977.6	0.00	0.00	0.00
5,560.0	0.00	0.00	5,428.5	-808.7	549.1	977.6	0.00	0.00	0.00
5,600.0	0.00	0.00	5,468.5	-808.7	549.1	977.6	0.00	0.00	0.00
5,640.0	0.00	0.00	5,508.5	-808.7	549.1	977.6	0.00	0.00	0.00
5,680.0	0.00	0.00	5,548.5	-808.7	549.1	977.6	0.00	0.00	0.00
5,720.0	0.00	0.00	5,588.5	-808.7	549.1	977.6	0.00	0.00	0.00
5,760.0	0.00	0.00	5,628.5	-808.7	549.1	977.6	0.00	0.00	0.00
5,800.0	0.00	0.00	5,668.5	-808.7	549.1	977.6	0.00	0.00	0.00
5,840.0	0.00	0.00	5,708.5	-808.7	549.1	977.6	0.00	0.00	0.00
5,880.0	0.00	0.00	5,748.5	-808.7	549.1	977.6	0.00	0.00	0.00
5,920.0	0.00	0.00	5,788.5	-808.7	549.1	977.6	0.00	0.00	0.00
5,960.0	0.00	0.00	5,828.5	-808.7	549.1	977.6	0.00	0.00	0.00
6,000.0	0.00	0.00	5,868.5	-808.7	549.1	977.6	0.00	0.00	0.00
6,040.0	0.00	0.00	5,908.5	-808.7	549.1	977.6	0.00	0.00	0.00

Database:	Landmark	Local Co-ordinate Reference:	Well Nelson 5-22
Company:	TRILLOGY RESOURCES, LLC. Weld County, CO	TVD Reference:	WELL @ 4863.0ft (Original Well Elev)
Project:	SEC.5-T4N-R67W	MD Reference:	WELL @ 4863.0ft (Original Well Elev)
Site:	Nelson 5-21 Pad Sec.5-T4N-R67W	North Reference:	True
Well:	Nelson 5-22	Survey Calculation Method:	Minimum Curvature
Wellbore:	Wellbore #1		
Design:	Plan #1 (9-21-11)		

Planned Survey									
Measured Depth (ft)	Inclination (°)	Azimuth (°)	Vertical Depth (ft)	+N/-S (ft)	+E/-W (ft)	Vertical Section (ft)	Dogleg Rate (°/100ft)	Build Rate (°/100ft)	Turn Rate (°/100ft)
6,080.0	0.00	0.00	5,948.5	-808.7	549.1	977.6	0.00	0.00	0.00
6,120.0	0.00	0.00	5,988.5	-808.7	549.1	977.6	0.00	0.00	0.00
6,160.0	0.00	0.00	6,028.5	-808.7	549.1	977.6	0.00	0.00	0.00
6,200.0	0.00	0.00	6,068.5	-808.7	549.1	977.6	0.00	0.00	0.00
6,240.0	0.00	0.00	6,108.5	-808.7	549.1	977.6	0.00	0.00	0.00
6,280.0	0.00	0.00	6,148.5	-808.7	549.1	977.6	0.00	0.00	0.00
6,320.0	0.00	0.00	6,188.5	-808.7	549.1	977.6	0.00	0.00	0.00
6,360.0	0.00	0.00	6,228.5	-808.7	549.1	977.6	0.00	0.00	0.00
6,400.0	0.00	0.00	6,268.5	-808.7	549.1	977.6	0.00	0.00	0.00
6,440.0	0.00	0.00	6,308.5	-808.7	549.1	977.6	0.00	0.00	0.00
6,480.0	0.00	0.00	6,348.5	-808.7	549.1	977.6	0.00	0.00	0.00
6,520.0	0.00	0.00	6,388.5	-808.7	549.1	977.6	0.00	0.00	0.00
6,560.0	0.00	0.00	6,428.5	-808.7	549.1	977.6	0.00	0.00	0.00
6,600.0	0.00	0.00	6,468.5	-808.7	549.1	977.6	0.00	0.00	0.00
6,640.0	0.00	0.00	6,508.5	-808.7	549.1	977.6	0.00	0.00	0.00
6,680.0	0.00	0.00	6,548.5	-808.7	549.1	977.6	0.00	0.00	0.00
6,720.0	0.00	0.00	6,588.5	-808.7	549.1	977.6	0.00	0.00	0.00
6,760.0	0.00	0.00	6,628.5	-808.7	549.1	977.6	0.00	0.00	0.00
6,800.0	0.00	0.00	6,668.5	-808.7	549.1	977.6	0.00	0.00	0.00
6,831.5	0.00	0.00	6,700.0	-808.7	549.1	977.6	0.00	0.00	0.00
LEGAL BOX 400' X 400' 1925'FNL & 1834'FWL									
6,840.0	0.00	0.00	6,708.5	-808.7	549.1	977.6	0.00	0.00	0.00
6,880.0	0.00	0.00	6,748.5	-808.7	549.1	977.6	0.00	0.00	0.00
6,920.0	0.00	0.00	6,788.5	-808.7	549.1	977.6	0.00	0.00	0.00
6,960.0	0.00	0.00	6,828.5	-808.7	549.1	977.6	0.00	0.00	0.00
7,000.0	0.00	0.00	6,868.5	-808.7	549.1	977.6	0.00	0.00	0.00
7,040.0	0.00	0.00	6,908.5	-808.7	549.1	977.6	0.00	0.00	0.00
7,080.0	0.00	0.00	6,948.5	-808.7	549.1	977.6	0.00	0.00	0.00
7,120.0	0.00	0.00	6,988.5	-808.7	549.1	977.6	0.00	0.00	0.00
7,160.0	0.00	0.00	7,028.5	-808.7	549.1	977.6	0.00	0.00	0.00
7,200.0	0.00	0.00	7,068.5	-808.7	549.1	977.6	0.00	0.00	0.00
7,240.0	0.00	0.00	7,108.5	-808.7	549.1	977.6	0.00	0.00	0.00
7,280.0	0.00	0.00	7,148.5	-808.7	549.1	977.6	0.00	0.00	0.00
7,320.0	0.00	0.00	7,188.5	-808.7	549.1	977.6	0.00	0.00	0.00
7,360.0	0.00	0.00	7,228.5	-808.7	549.1	977.6	0.00	0.00	0.00
7,400.0	0.00	0.00	7,268.5	-808.7	549.1	977.6	0.00	0.00	0.00
7,440.0	0.00	0.00	7,308.5	-808.7	549.1	977.6	0.00	0.00	0.00
7,480.0	0.00	0.00	7,348.5	-808.7	549.1	977.6	0.00	0.00	0.00
7,520.0	0.00	0.00	7,388.5	-808.7	549.1	977.6	0.00	0.00	0.00
7,560.0	0.00	0.00	7,428.5	-808.7	549.1	977.6	0.00	0.00	0.00
7,600.0	0.00	0.00	7,468.5	-808.7	549.1	977.6	0.00	0.00	0.00
7,640.0	0.00	0.00	7,508.5	-808.7	549.1	977.6	0.00	0.00	0.00
7,680.0	0.00	0.00	7,548.5	-808.7	549.1	977.6	0.00	0.00	0.00
7,720.0	0.00	0.00	7,588.5	-808.7	549.1	977.6	0.00	0.00	0.00
7,760.0	0.00	0.00	7,628.5	-808.7	549.1	977.6	0.00	0.00	0.00
7,800.0	0.00	0.00	7,668.5	-808.7	549.1	977.6	0.00	0.00	0.00
7,840.0	0.00	0.00	7,708.5	-808.7	549.1	977.6	0.00	0.00	0.00
7,880.0	0.00	0.00	7,748.5	-808.7	549.1	977.6	0.00	0.00	0.00
7,881.5	0.00	0.00	7,750.0	-808.7	549.1	977.6	0.00	0.00	0.00

Database:	Landmark	Local Co-ordinate Reference:	Well Nelson 5-22
Company:	TRILLOGY RESOURCES, LLC. Weld County, CO	TVD Reference:	WELL @ 4863.0ft (Original Well Elev)
Project:	SEC.5-T4N-R67W	MD Reference:	WELL @ 4863.0ft (Original Well Elev)
Site:	Nelson 5-21 Pad Sec.5-T4N-R67W	North Reference:	True
Well:	Nelson 5-22	Survey Calculation Method:	Minimum Curvature
Wellbore:	Wellbore #1		
Design:	Plan #1 (9-21-11)		

Targets

Target Name

- hit/miss target	Dip Angle	Dip Dir.	TVD	+N/-S	+E/-W	Northing	Easting	Latitude	Longitude
- Shape	(°)	(°)	(ft)	(ft)	(ft)	(ft)	(ft)		
LEGAL BOX 400' X 400'	0.00	0.00	6,700.0	-809.8	550.1	1,368,605.21	3,162,444.71	40.343757	-104.917217
- plan misses target center by 1.4ft at 6831.5ft MD (6700.0 TVD, -808.7 N, 549.1 E)									
- Rectangle (sides W400.0 H400.0 D1,050.0)									
TARGET BHL 1924'F	0.00	0.00	5,000.0	-808.7	549.1	1,368,606.26	3,162,443.75	40.343760	-104.917220
- plan hits target center									
- Point									

Casing Points

Measured Depth (ft)	Vertical Depth (ft)	Name	Casing Diameter (")	Hole Diameter (")
500.0	500.0	8 5/8"	8-5/8	12-1/4



Directional

TRILLOGY RESOURCES, LLC. Weld County, CO

SEC.5-T4N-R67W

Nelson 5-21 Pad Sec.5-T4N-R67W

Nelson 5-22

Wellbore #1

Plan #1 (9-21-11)

Anticollision Report

22 September, 2011

Company:	TRILLOGY RESOURCES, LLC. Weld County, CO	Local Co-ordinate Reference:	Well Nelson 5-22
Project:	SEC.5-T4N-R67W	TVD Reference:	WELL @ 4863.0ft (Original Well Elev)
Reference Site:	Nelson 5-21 Pad Sec.5-T4N-R67W	MD Reference:	WELL @ 4863.0ft (Original Well Elev)
Site Error:	0.0ft	North Reference:	True
Reference Well:	Nelson 5-22	Survey Calculation Method:	Minimum Curvature
Well Error:	0.0ft	Output errors are at	2.00 sigma
Reference Wellbore	Wellbore #1	Database:	Landmark
Reference Design:	Plan #1 (9-21-11)	Offset TVD Reference:	Offset Datum

Reference	Plan #1 (9-21-11)		
Filter type:	NO GLOBAL FILTER: Using user defined selection & filtering criteria		
Interpolation Method:	Stations	Error Model:	ISCWSA
Depth Range:	Unlimited	Scan Method:	Closest Approach 3D
Results Limited by:	Maximum center-center distance of 10,000.0ft	Error Surface:	Elliptical Conic
Warning Levels Evaluated at:	2.00 Sigma		

Survey Tool Program	Date 9/22/2011			
From (ft)	To (ft)	Survey (Wellbore)	Tool Name	Description
0.0	7,881.5	Plan #1 (9-21-11) (Wellbore #1)	MWD	MWD - Standard

Summary						
Site Name	Reference Measured Depth (ft)	Offset Measured Depth (ft)	Distance Between Centres (ft)	Separation Between Ellipses (ft)	Warning	
Offset Well - Wellbore - Design						
Nelson 5-21 Pad Sec.5-T4N-R67W						
Nelson 5-21 - Wellbore #1 - Plan #1 (9-21-11)	666.3	667.3	19.8	18.5	14.326	CC
Nelson 5-21 - Wellbore #1 - Plan #1 (9-21-11)	700.0	701.0	19.8	18.4	13.584	ES
Nelson 5-21 - Wellbore #1 - Plan #1 (9-21-11)	800.0	800.4	21.2	19.6	12.601	SF

Offset Design Nelson 5-21 Pad Sec.5-T4N-R67W - Nelson 5-21 - Wellbore #1 - Plan #1 (9-21-11)												
Survey Program: 0-Reference												
Measured Depth (ft)	Vertical Depth (ft)	Measured Depth (ft)	Vertical Depth (ft)	Semi Major Axis Reference (ft)	Offset (ft)	Highside Toolface (°)	Offset Wellbore Centre +N/-S (ft)	+E/-W (ft)	Distance Between Centres (ft)	Between Ellipses (ft)	Minimum Separation (ft)	Warning
0.0	0.0	1.0	1.0	0.0		-100.56	-3.6	-19.5	19.8	19.8	0.00	N/A
100.0	100.0	101.0	101.0	0.1		-100.56	-3.6	-19.5	19.8	19.7	0.11	176.301
200.0	200.0	201.0	201.0	0.3		-100.56	-3.6	-19.5	19.8	19.5	0.34	58.837
300.0	300.0	301.0	301.0	0.6		-100.56	-3.6	-19.5	19.8	19.3	0.56	35.310
400.0	400.0	401.0	401.0	0.8		-100.56	-3.6	-19.5	19.8	19.1	0.79	25.224
500.0	500.0	501.0	501.0	1.0		-100.56	-3.6	-19.5	19.8	18.8	1.01	19.620
600.0	600.0	601.0	601.0	1.2		-100.56	-3.6	-19.5	19.8	18.6	1.24	16.053
666.3	666.3	667.3	667.3	1.4		-100.56	-3.6	-19.5	19.8	18.5	1.39	14.326 CC
700.0	700.0	701.0	701.0	1.5		-100.56	-3.6	-19.5	19.8	18.4	1.46	13.584 ES
800.0	800.0	800.4	800.4	1.7		-103.58	-5.0	-20.6	21.2	19.6	1.69	12.601 SF
900.0	900.0	899.6	899.4	1.9		-110.50	-9.0	-24.0	25.6	23.7	1.91	13.422
1,000.0	1,000.0	998.3	997.8	2.1		99.16	-15.5	-29.5	33.7	31.6	2.11	15.982
1,100.0	1,099.8	1,096.4	1,095.2	2.3		98.98	-24.6	-37.1	45.5	43.2	2.29	19.853
1,200.0	1,199.5	1,193.6	1,191.1	2.5		100.58	-36.1	-46.8	60.9	58.4	2.49	24.451
1,300.0	1,298.7	1,289.6	1,285.5	2.7		102.66	-50.0	-58.4	80.0	77.3	2.72	29.465
1,400.0	1,397.5	1,384.3	1,377.8	3.0		104.66	-66.0	-71.8	102.9	99.9	2.97	34.593
1,500.0	1,495.6	1,477.5	1,467.9	3.3		106.40	-84.0	-86.9	129.4	126.2	3.27	39.549
1,600.0	1,593.1	1,569.3	1,556.0	3.7		107.85	-103.9	-103.6	159.7	156.0	3.62	44.101
1,700.0	1,689.6	1,663.6	1,646.2	4.1		109.46	-125.3	-121.5	192.1	188.1	4.02	47.788
1,734.8	1,723.0	1,696.3	1,677.4	4.3		110.07	-132.7	-127.7	203.7	199.5	4.17	48.836
1,800.0	1,785.5	1,757.5	1,735.8	4.6		111.52	-146.6	-139.3	225.7	221.2	4.46	50.557
1,900.0	1,881.3	1,851.3	1,825.5	5.1		113.26	-167.8	-157.1	259.6	254.6	4.93	52.674
2,000.0	1,977.1	1,945.2	1,915.1	5.6		114.60	-189.1	-175.0	293.6	288.2	5.41	54.318

CC - Min centre to center distance or convergent point, SF - min separation factor, ES - min ellipse separation

Company:	TRILLOGY RESOURCES, LLC. Weld County, CO	Local Co-ordinate Reference:	Well Nelson 5-22
Project:	SEC.5-T4N-R67W	TVD Reference:	WELL @ 4863.0ft (Original Well Elev)
Reference Site:	Nelson 5-21 Pad Sec.5-T4N-R67W	MD Reference:	WELL @ 4863.0ft (Original Well Elev)
Site Error:	0.0ft	North Reference:	True
Reference Well:	Nelson 5-22	Survey Calculation Method:	Minimum Curvature
Well Error:	0.0ft	Output errors are at	2.00 sigma
Reference Wellbore	Wellbore #1	Database:	Landmark
Reference Design:	Plan #1 (9-21-11)	Offset TVD Reference:	Offset Datum

Offset Design Nelson 5-21 Pad Sec.5-T4N-R67W - Nelson 5-21 - Wellbore #1 - Plan #1 (9-21-11)													Offset Site Error:	0.0 ft
Survey Program: 0-Reference													Offset Well Error:	0.0 ft
Measured Depth (ft)	Vertical Depth (ft)	Measured Depth (ft)	Vertical Depth (ft)	Reference	Offset	Semi Major Axis	Highside Toolface (°)	Offset Wellbore Centre +N/-S (ft)	+E/-W (ft)	Between Centres (ft)	Between Ellipses (ft)	Minimum Separation (ft)	Separation Factor	Warning
2,100.0	2,072.8	2,039.0	2,004.7	6.2			115.66	-210.3	-192.8	327.8	321.9	5.89	55.617	
2,200.0	2,168.6	2,132.8	2,094.4	6.7			116.52	-231.6	-210.6	362.1	355.7	6.39	56.662	
2,300.0	2,264.4	2,226.6	2,184.0	7.3			117.24	-252.8	-228.4	396.4	389.5	6.89	57.514	
2,400.0	2,360.2	2,320.5	2,273.6	7.9			117.84	-274.1	-246.2	430.7	423.3	7.40	58.220	
2,500.0	2,456.0	2,414.3	2,363.2	8.4			118.35	-295.3	-264.0	465.1	457.2	7.91	58.813	
2,600.0	2,551.8	2,508.1	2,452.9	9.0			118.79	-316.6	-281.9	499.5	491.1	8.42	59.315	
2,700.0	2,647.5	2,601.9	2,542.5	9.6			119.17	-337.8	-299.7	534.0	525.1	8.94	59.745	
2,800.0	2,743.3	2,695.7	2,632.1	10.2			119.51	-359.1	-317.5	568.5	559.0	9.46	60.117	
2,900.0	2,839.1	2,789.6	2,721.8	10.8			119.81	-380.3	-335.3	602.9	593.0	9.98	60.441	
3,000.0	2,934.9	2,883.4	2,811.4	11.4			120.08	-401.6	-353.1	637.4	626.9	10.50	60.726	
3,100.0	3,030.7	2,977.2	2,901.0	12.0			120.32	-422.8	-370.9	671.9	660.9	11.02	60.978	
3,200.0	3,126.5	3,071.0	2,990.7	12.6			120.53	-444.1	-388.8	706.5	694.9	11.54	61.202	
3,300.0	3,222.3	3,164.9	3,080.3	13.2			120.73	-465.3	-406.6	741.0	728.9	12.07	61.402	
3,400.0	3,318.0	3,258.7	3,169.9	13.8			120.91	-486.6	-424.4	775.5	762.9	12.59	61.583	
3,500.0	3,413.8	3,352.5	3,259.6	14.4			121.07	-507.8	-442.2	810.0	796.9	13.12	61.745	
3,600.0	3,509.6	3,446.3	3,349.2	15.0			121.22	-529.1	-460.0	844.6	830.9	13.65	61.893	
3,700.0	3,605.4	3,540.2	3,438.8	15.6			121.36	-550.3	-477.8	879.1	865.0	14.17	62.028	
3,800.0	3,701.2	3,634.0	3,528.5	16.2			121.49	-571.6	-495.7	913.7	899.0	14.70	62.151	
3,900.0	3,797.0	3,727.8	3,618.1	16.8			121.61	-592.8	-513.5	948.2	933.0	15.23	62.264	
4,000.0	3,892.7	3,821.6	3,707.7	17.4			121.72	-614.1	-531.3	982.8	967.0	15.76	62.368	
4,100.0	3,988.5	3,915.5	3,797.3	18.0			121.82	-635.4	-549.1	1,017.3	1,001.1	16.29	62.464	
4,200.0	4,084.3	4,009.3	3,887.0	18.6			121.91	-656.6	-566.9	1,051.9	1,035.1	16.82	62.553	
4,296.7	4,177.0	4,100.0	3,973.7	19.2			122.00	-677.2	-584.2	1,085.3	1,068.0	17.33	62.633	
4,300.0	4,180.1	4,103.1	3,976.6	19.2			122.02	-677.9	-584.7	1,086.5	1,069.1	17.34	62.651	
4,400.0	4,276.4	4,197.3	4,066.6	19.6			122.63	-699.2	-602.6	1,120.1	1,102.4	17.66	63.433	
4,500.0	4,373.6	4,292.0	4,157.1	20.0			123.04	-720.6	-620.6	1,152.0	1,134.0	17.96	64.145	
4,600.0	4,471.5	4,387.2	4,248.0	20.4			123.27	-742.2	-638.7	1,182.0	1,163.8	18.24	64.798	
4,700.0	4,570.1	4,516.6	4,372.4	20.7			123.26	-769.5	-661.6	1,209.0	1,190.5	18.51	65.303	
4,800.0	4,669.2	4,651.1	4,503.2	20.9			123.22	-793.4	-681.6	1,231.4	1,212.6	18.75	65.661	
4,900.0	4,768.7	4,788.1	4,637.8	21.1			123.14	-812.8	-697.9	1,248.8	1,229.8	18.96	65.875	
5,000.0	4,868.5	4,927.2	4,775.6	21.3			123.02	-827.4	-710.1	1,261.3	1,242.1	19.13	65.946	
5,100.0	4,968.5	5,067.7	4,915.5	21.4			122.87	-837.0	-718.2	1,268.7	1,249.4	19.26	65.870	
5,131.5	5,000.0	5,112.2	4,960.0	21.5			-91.36	-838.9	-719.8	1,269.9	1,250.6	19.30	65.806	
5,200.0	5,068.5	5,209.0	5,056.8	21.5			-91.47	-841.3	-721.8	1,271.4	1,252.0	19.39	65.575	
5,300.0	5,168.5	5,321.7	5,169.5	21.6			-91.48	-841.5	-722.0	1,271.5	1,252.0	19.50	65.221	
5,400.0	5,268.5	5,421.7	5,269.5	21.7			-91.48	-841.5	-722.0	1,271.5	1,251.9	19.60	64.861	
5,500.0	5,368.5	5,521.7	5,369.5	21.8			-91.48	-841.5	-722.0	1,271.5	1,251.8	19.71	64.498	
5,600.0	5,468.5	5,621.7	5,469.5	21.9			-91.48	-841.5	-722.0	1,271.5	1,251.7	19.83	64.133	
5,700.0	5,568.5	5,721.7	5,569.5	22.1			-91.48	-841.5	-722.0	1,271.5	1,251.6	19.94	63.766	
5,800.0	5,668.5	5,821.7	5,669.5	22.2			-91.48	-841.5	-722.0	1,271.5	1,251.5	20.06	63.397	
5,900.0	5,768.5	5,921.7	5,769.5	22.3			-91.48	-841.5	-722.0	1,271.5	1,251.4	20.17	63.027	
6,000.0	5,868.5	6,021.7	5,869.5	22.4			-91.48	-841.5	-722.0	1,271.5	1,251.2	20.29	62.656	
6,100.0	5,968.5	6,121.7	5,969.5	22.5			-91.48	-841.5	-722.0	1,271.5	1,251.1	20.42	62.283	
6,200.0	6,068.5	6,221.7	6,069.5	22.6			-91.48	-841.5	-722.0	1,271.5	1,251.0	20.54	61.910	
6,300.0	6,168.5	6,321.7	6,169.5	22.7			-91.48	-841.5	-722.0	1,271.5	1,250.9	20.66	61.536	
6,400.0	6,268.5	6,421.7	6,269.5	22.8			-91.48	-841.5	-722.0	1,271.5	1,250.7	20.79	61.161	
6,500.0	6,368.5	6,521.7	6,369.5	23.0			-91.48	-841.5	-722.0	1,271.5	1,250.6	20.92	60.787	
6,600.0	6,468.5	6,621.7	6,469.5	23.1			-91.48	-841.5	-722.0	1,271.5	1,250.5	21.05	60.412	
6,700.0	6,568.5	6,721.7	6,569.5	23.2			-91.48	-841.5	-722.0	1,271.5	1,250.4	21.18	60.037	
6,800.0	6,668.5	6,821.7	6,669.5	23.3			-91.48	-841.5	-722.0	1,271.5	1,250.2	21.31	59.663	
6,900.0	6,768.5	6,921.7	6,769.5	23.5			-91.48	-841.5	-722.0	1,271.5	1,250.1	21.45	59.289	

CC - Min centre to center distance or convergent point, SF - min separation factor, ES - min ellipse separation

Company:	TRILLOGY RESOURCES, LLC. Weld County, CO	Local Co-ordinate Reference:	Well Nelson 5-22
Project:	SEC.5-T4N-R67W	TVD Reference:	WELL @ 4863.0ft (Original Well Elev)
Reference Site:	Nelson 5-21 Pad Sec.5-T4N-R67W	MD Reference:	WELL @ 4863.0ft (Original Well Elev)
Site Error:	0.0ft	North Reference:	True
Reference Well:	Nelson 5-22	Survey Calculation Method:	Minimum Curvature
Well Error:	0.0ft	Output errors are at	2.00 sigma
Reference Wellbore	Wellbore #1	Database:	Landmark
Reference Design:	Plan #1 (9-21-11)	Offset TVD Reference:	Offset Datum

Offset Design												Offset Site Error:	0.0 ft
Survey Program: 0-Reference												Offset Well Error:	0.0 ft
Nelson 5-21 Pad Sec.5-T4N-R67W - Nelson 5-21 - Wellbore #1 - Plan #1 (9-21-11)													
Reference		Offset		Semi Major Axis		Highside Toolface (°)	Offset Wellbore Centre		Distance		Minimum Separation (ft)	Separation Factor	Warning
Measured Depth (ft)	Vertical Depth (ft)	Measured Depth (ft)	Vertical Depth (ft)	Reference (ft)	Offset (ft)		+N/-S (ft)	+E/-W (ft)	Between Centres (ft)	Between Ellipses (ft)			
7,000.0	6,868.5	7,021.7	6,869.5	23.6		-91.48	-841.5	-722.0	1,271.5	1,250.0	21.58	58.915	
7,100.0	6,968.5	7,121.7	6,969.5	23.7		-91.48	-841.5	-722.0	1,271.5	1,249.8	21.72	58.542	
7,200.0	7,068.5	7,221.7	7,069.5	23.8		-91.48	-841.5	-722.0	1,271.5	1,249.7	21.86	58.170	
7,300.0	7,168.5	7,321.7	7,169.5	24.0		-91.48	-841.5	-722.0	1,271.5	1,249.5	22.00	57.799	
7,400.0	7,268.5	7,421.7	7,269.5	24.1		-91.48	-841.5	-722.0	1,271.5	1,249.4	22.14	57.429	
7,500.0	7,368.5	7,521.7	7,369.5	24.2		-91.48	-841.5	-722.0	1,271.5	1,249.3	22.28	57.061	
7,600.0	7,468.5	7,621.7	7,469.5	24.4		-91.48	-841.5	-722.0	1,271.5	1,249.1	22.43	56.693	
7,700.0	7,568.5	7,721.7	7,569.5	24.5		-91.48	-841.5	-722.0	1,271.5	1,249.0	22.57	56.327	
7,800.0	7,668.5	7,821.7	7,669.5	24.6		-91.48	-841.5	-722.0	1,271.5	1,248.8	22.72	55.963	
7,854.0	7,722.5	7,875.8	7,723.5	24.7		-91.48	-841.5	-722.0	1,271.5	1,248.7	22.80	55.766	
7,881.5	7,750.0	7,902.3	7,750.0	24.8		-91.48	-841.5	-722.0	1,271.5	1,248.7	22.84	55.667	

Company:	TRILLOGY RESOURCES, LLC. Weld County, CO	Local Co-ordinate Reference:	Well Nelson 5-22
Project:	SEC.5-T4N-R67W	TVD Reference:	WELL @ 4863.0ft (Original Well Elev)
Reference Site:	Nelson 5-21 Pad Sec.5-T4N-R67W	MD Reference:	WELL @ 4863.0ft (Original Well Elev)
Site Error:	0.0ft	North Reference:	True
Reference Well:	Nelson 5-22	Survey Calculation Method:	Minimum Curvature
Well Error:	0.0ft	Output errors are at	2.00 sigma
Reference Wellbore	Wellbore #1	Database:	Landmark
Reference Design:	Plan #1 (9-21-11)	Offset TVD Reference:	Offset Datum

Reference Depths are relative to WELL @ 4863.0ft (Original Well Elev) Coordinates are relative to: Nelson 5-22
 Offset Depths are relative to Offset Datum Coordinate System is US State Plane 1983, Colorado Northern Zone
 Central Meridian is -105.500000 ° Grid Convergence at Surface is: 0.38°



Company:	TRILLOGY RESOURCES, LLC. Weld County, CO	Local Co-ordinate Reference:	Well Nelson 5-22
Project:	SEC.5-T4N-R67W	TVD Reference:	WELL @ 4863.0ft (Original Well Elev)
Reference Site:	Nelson 5-21 Pad Sec.5-T4N-R67W	MD Reference:	WELL @ 4863.0ft (Original Well Elev)
Site Error:	0.0ft	North Reference:	True
Reference Well:	Nelson 5-22	Survey Calculation Method:	Minimum Curvature
Well Error:	0.0ft	Output errors are at	2.00 sigma
Reference Wellbore	Wellbore #1	Database:	Landmark
Reference Design:	Plan #1 (9-21-11)	Offset TVD Reference:	Offset Datum

Reference Depths are relative to WELL @ 4863.0ft (Original Well Elev) Coordinates are relative to: Nelson 5-22
 Offset Depths are relative to Offset Datum Coordinate System is US State Plane 1983, Colorado Northern Zone
 Central Meridian is -105.500000 ° Grid Convergence at Surface is: 0.38°

