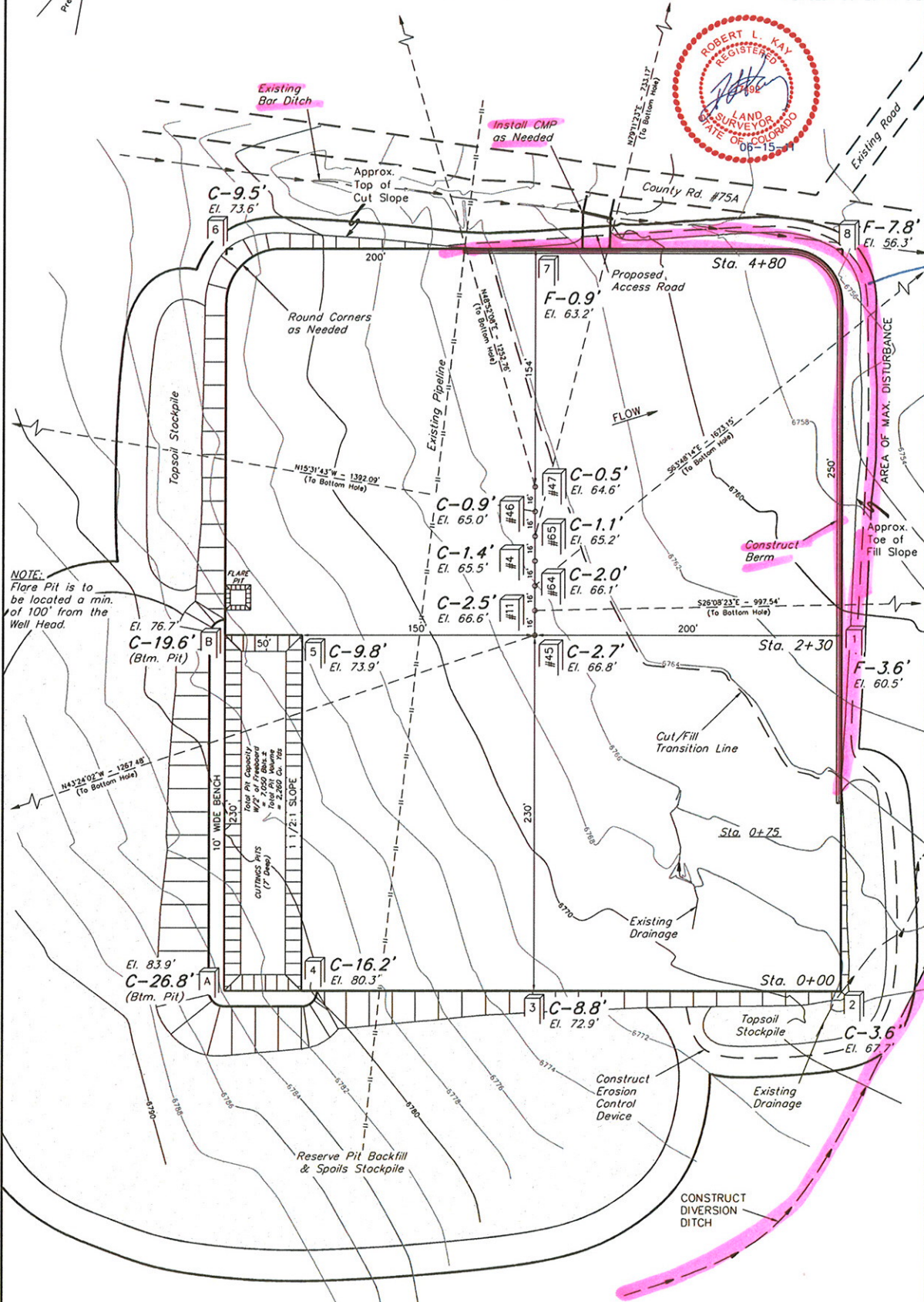


WEXPRO COMPANY  
CONSTRUCTION LAYOUT FOR  
B.W. MUSSER #45, #46, #47, #64, #65,  
GOVERNMENT #4 & #11  
SECTION 8, T11N, R97W, 6th P.M.  
NE 1/4 NE 1/4

FIGURE #1

SCALE: 1" = 50'  
DATE: 09-07-10  
DRAWN BY: C.C.  
REVISED: 01-31-11 S.L.  
REVISED: 03-07-11 S.L.  
REVISED: 04-09-11 S.L.  
REVISED: 05-25-11 S.L.



NOTE:  
Flare Pit is to  
be located a min.  
of 100' from the  
Well Head.

Elev. Ungraded Ground At #45 Loc. Stake = 6766.8'  
FINISHED GRADE ELEV. AT #45 LOC. STAKE = 6764.1'

UINTAH ENGINEERING & LAND SURVEYING  
85 So. 200 East • Vernal, Utah 84078 • (435) 789-1017