

GSL / PETROHUNTER

**Furr
10-22D**

API Well No.:

**3/1/2007
GARFIELD**

4 1/2" LONG STRING

Customer Representative:

JONNIE SORRELL

Halliburton Operator:

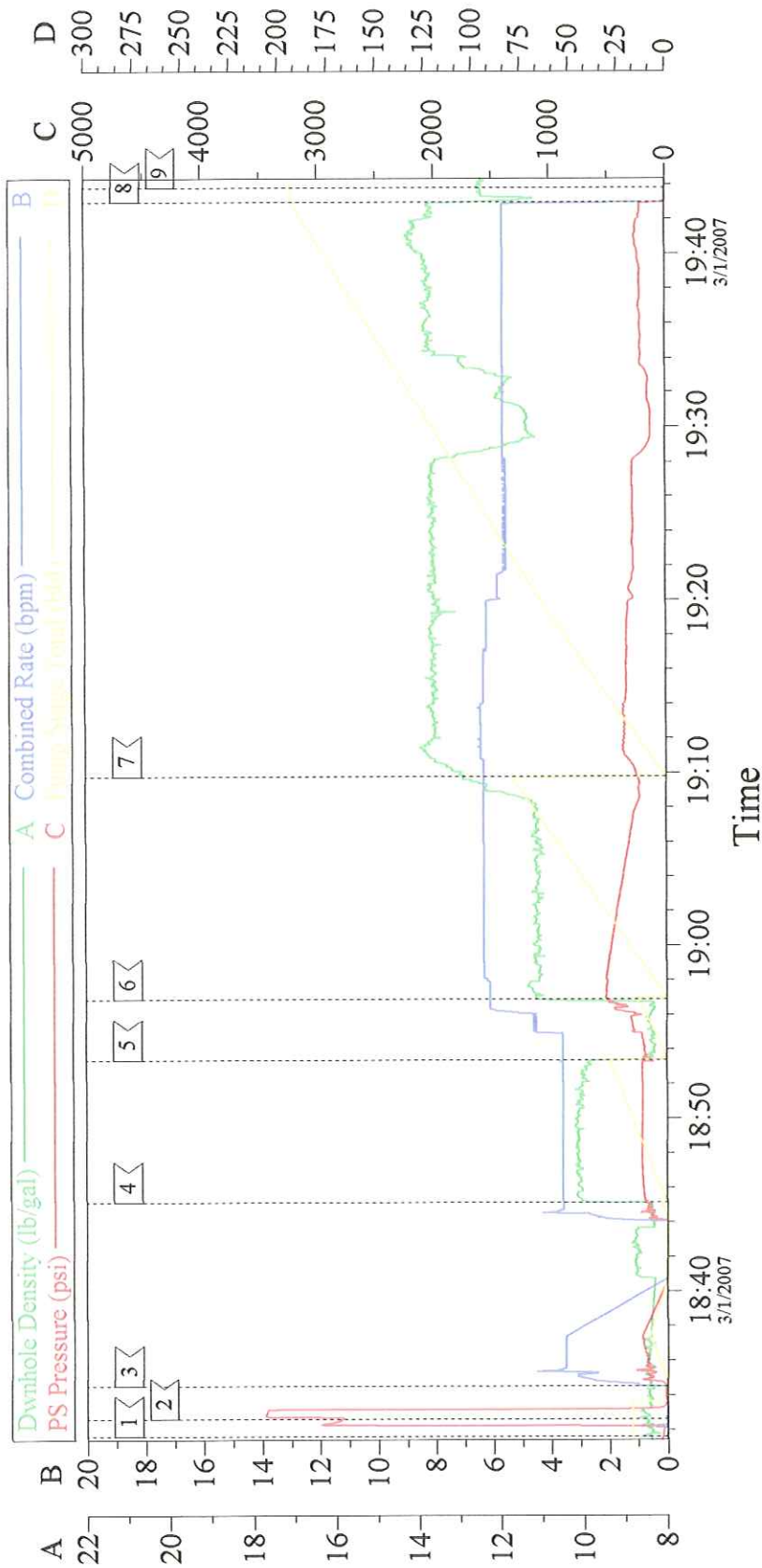
DENNIS HAMMOND

Ticket No.:

4920663

HALLIBURTON

4 1/2" LONGSTRING



Event Log

Intersection	PP	Intersection	PP	Intersection	PP
1 START JOB	18:31:36 44.77	2 TEST LINES	18:32:37 2811	3 START H2O SPACER	18:34:32 21.60
4 START SUPER FLUSH	18:45:08 176.0	5 START H2O SPACER	18:53:23 224.7	6 START LEAD CEMENT	18:56:53 519.7
7 START TAIL CEMENT	19:09:48 247.6	8 SHUT DOWN	19:42:58 40.13	9 END JOB	19:43:49 -26.00

Customer: GSL PETROHUNTER	Job Date: 03/01/07	Ticket #: 4920663
Well Description: LONGSTRING	CEMENTER Dennis Hammond	ADC USED YES
LEASE FURR	WELL # 10-22D	CO REP

JOB LOG

TICKET DATE
3/1/2007

COUNTY
GARFIELD

CUSTOMER REP / PHONE
JONNIE SORRELL

API/UWI #	
-----------	--

JOB PURPOSE CODE
7523

Description	4 1/2" LONG STRING
-------------	---------------------------

SEC / TWP / RNG

10-22D

SEC 14 T 10S R 95W

[illegible]

Field Ticket

Field Ticket Number: 4920663		Field Ticket Date: Thursday, March 01, 2007	
Bill To: GSL ENERGY 1875 LAWRENCE STREET SUITE 1400 DENVER, CO 80202		Job Name: Order Type: Streamline Order (ZOH) Well Name: FURR 10-22D Company Code: 1100 Customer PO No.: NA Shipping Point: Grand Junction, CO, USA Sales Office: Rocky Mountains BD Well Type: Well Category:	
Ship To: GSL ENERGY FURR, 10-22D 2555592 UNKNOWN,			

Material	Description	QTY	UOM	Base Amt	Unit Amt	Gross Amount	Discount	Net Amount
7523	CMT PRODUCTION CASING BOM	1	JOB	0.00	0.00	0.00		0.00
1	ZI-MILEAGE FROM NEAREST HES BASE,/UNIT	150	MI	0.00	9.79	1,468.50	53%	690.19
	Number of Units	1						
86955	ZI FUEL SURCHG-HEAVY TRKS >1 1/2 TON	150	MI	0.00	0.45	67.50		67.50
	Number of Units	1						
2	MILEAGE FOR CEMENTING CREW,ZI	150	MI	0.00	5.76	864.00	53%	406.08
	Number of Units	1						
86954	ZI FUEL SURCHG-CARS/PICKUPS<1 1/2TON	150	MI	0.00	0.15	22.50		22.50
	Number of Units	1						
372867	Cmt PSL - DOT Vehicle Charge, CMT	6	EA	0.00	241.00	1,446.00		1,446.00
16091	ZI - PUMPING CHARGE	1	EA	0.00	10,344.00	10,344.00	53%	4,861.68
	DEPTH	8603						
	FEET/METERS (FT/M)		FT					
139	ADC (AUTO DENSITY CTRL) SYS, /JOB,ZI	1	JOB	0.00	2,275.00	2,275.00	53%	1,069.25
	NUMBER OF UNITS	1						
132	PORT. DAS W/CEMWIN;ACQUIRE W/HES, ZI	1	JOB	0.00	1,649.00	1,649.00	53%	775.03
	NUMBER OF DAYS	1						
7	ENVIRONMENTAL SURCHARGE,/JOB,ZI	1	JOB	0.00	134.00	134.00		134.00
8	IRON SAFETY INSPECTION SURCHARGE /JOB ZI	1	JOB	0.00	83.00	83.00		83.00
74038	ZI PLUG CONTAINER RENTAL-1ST DAY	1	EA	1,322.00	0.00	1,322.00	53%	621.34
	DAYS OR FRACTION (MIN1)	1						
90	ZI QUICK LATCH ATTACHMENT	1	JOB	0.00	491.00	491.00	53%	230.77
	SIZE IN INCHES/MILLIMETER	4.5						

Material	Description	QTY	UOM	Base Amt	Unit Amt	Gross Amount	Discount	Net Amount
	INCHES/MILLIMETERS (IN/MM)		IN					
101241019	PLUG,CMTG,TOP,4 1/2,HWE,3.65 MIN/4.14 MA	1	EA	0.00	186.00	186.00	53%	87.42
76400	ZI MILEAGE,CMT MTLS DEL/RET MIN NUMBER OF TONS	75 43.42	MI	0.00	3.35	10,909.28	53%	5,127.36
87605	ZI FUEL SURCHG-CMT & CMT ADDITIVES NUMBER OF TONS	75 43.42	MI	0.00	0.15	488.48		488.48
3965	HANDLE&DUMP SVC CHRGE, CMT&ADDITIVES,ZI NUMBER OF EACH	1212 1	CF	0.00	5.49	6,653.88	53%	3,127.32
100004722	SHOE,GID,4-1/2 8RD	1	EA	0.00	299.00	299.00	53%	140.53
100004752	CLR,FLT,4-1/2 8RD 9.5-13.5PPF,2-3/4	1	EA	0.00	700.00	700.00	53%	329.00
100004622	CLP,LIM,4 1/2,HNGD,FRICT GRIP,WTH DRAW	3	EA	0.00	44.20	132.60	53%	62.32
100005045	KIT,HALL WELD-A	2	EA	0.00	74.30	148.60	53%	69.84
100004473	CENTRALIZER ASSY - API - 4-1/2 CSG X	26	EA	0.00	126.00	3,276.00	53%	1,539.72
100003685	CEM,CLASS G / PREMIUM, BULK	52	SK	0.00	42.24	2,196.48	53%	1,032.35
100003690	Chem- Pozmix A (Bulk) Flyash	9688	LB	0.00	24.85	2,407.47	53%	1,131.51
100064040	Chemical - Halliburton Gel - (50 lb sk)	24	SK	0.00	27.71	665.04	53%	312.57
100005052	CHEM, LIME-HYDRATED-BULK	1456	LB	0.00	0.32	465.92	53%	218.98
101216940	Chemical - Pol-E-Flake, 25 lb bag	26	LB	0.00	7.84	203.84	53%	95.80
100003685	CEM,CLASS G / PREMIUM, BULK	429	SK	0.00	42.24	18,120.96	53%	8,516.85
100003690	Chem- Pozmix A (Bulk) Flyash	26770	LB	0.00	24.85	6,652.35	53%	3,126.60
100003646	CHEMICAL - HALAD-322 - 50 LB SACK	202	LB	0.00	18.88	3,813.76	53%	1,792.47
101209204	Chemical - Halad-23 (50 lb)	336	LB	0.00	24.09	8,094.24	53%	3,804.29
101376573	Chem-Versaset, 55 lb sack	202	LB	0.00	12.12	2,448.24	53%	1,150.67
100005050	Chemical - HR-5 (50 lb)	135	LB	0.00	11.07	1,494.45	53%	702.39
100003668	CHEMICAL - SUPER CBL - 50 LB PAIL	135	LB	0.00	72.35	9,767.25	53%	4,590.61
100003653	CHEMICAL - CFR-3 - 50 LB SACK	202	LB	0.00	14.69	2,967.38	53%	1,394.67

Field Ticket Number: 4920663

Field Ticket Date: Thursday, March 01, 2007
2 of 3

Material	Description	QTY	UOM	Base Amt	Unit Amt	Gross Amount	Discount	Net Amount
101216940	Chemical - Pol-E-Flake, 25 lb bag	108	LB	0.00	7.84	846.72	53%	397.96
12199	SBM SUPERFLUSH 101	1260	GAL	0.00	6.79	8,555.40	53%	4,021.04
Totals						111,659.84	57,991.75	53,668.09

Halliburton Rep:

Customer Agent:

Halliburton Approval

JOHNNIE SORRELL

THIS OUTPUT DOES NOT INCLUDE TAXES. APPLICABLE SALES TAX WILL BE BILLED ON THE FINAL INVOICE.
CUSTOMER HEREBY ACKNOWLEDGES RECEIPT OF THE MATERIALS AND SERVICES DESCRIBED ABOVE AND ON THE ATTACHED DOCUMENTS.

X
Customer Signature

FIELD TICKET TOTAL: USD 53,668.09