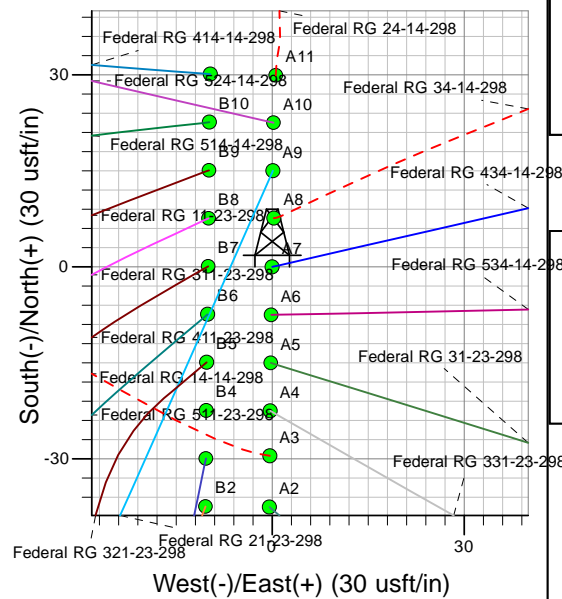
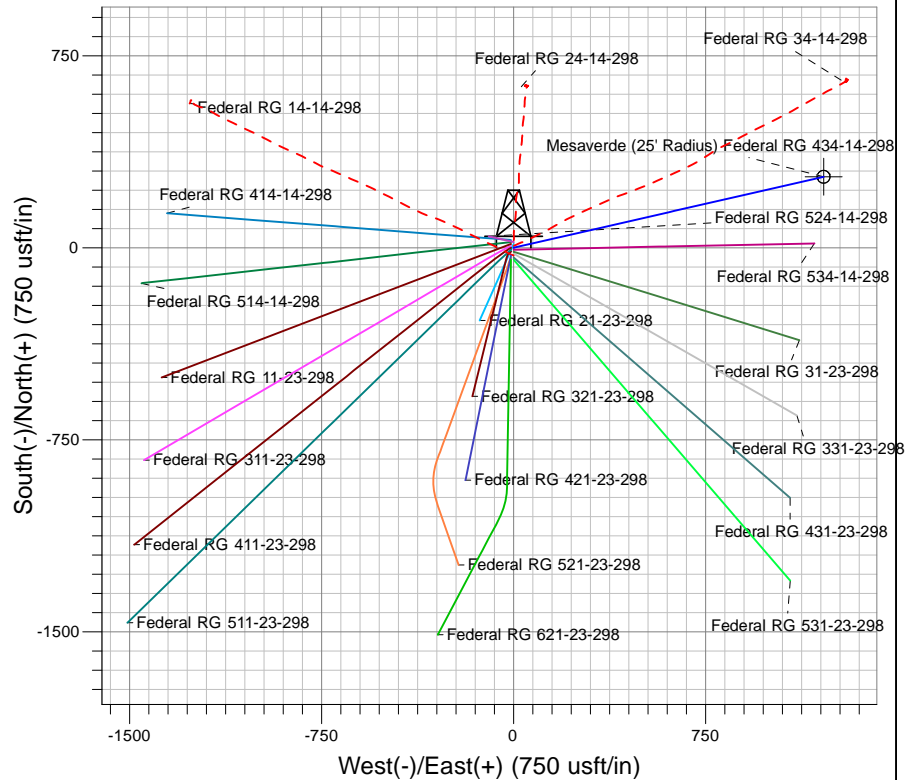
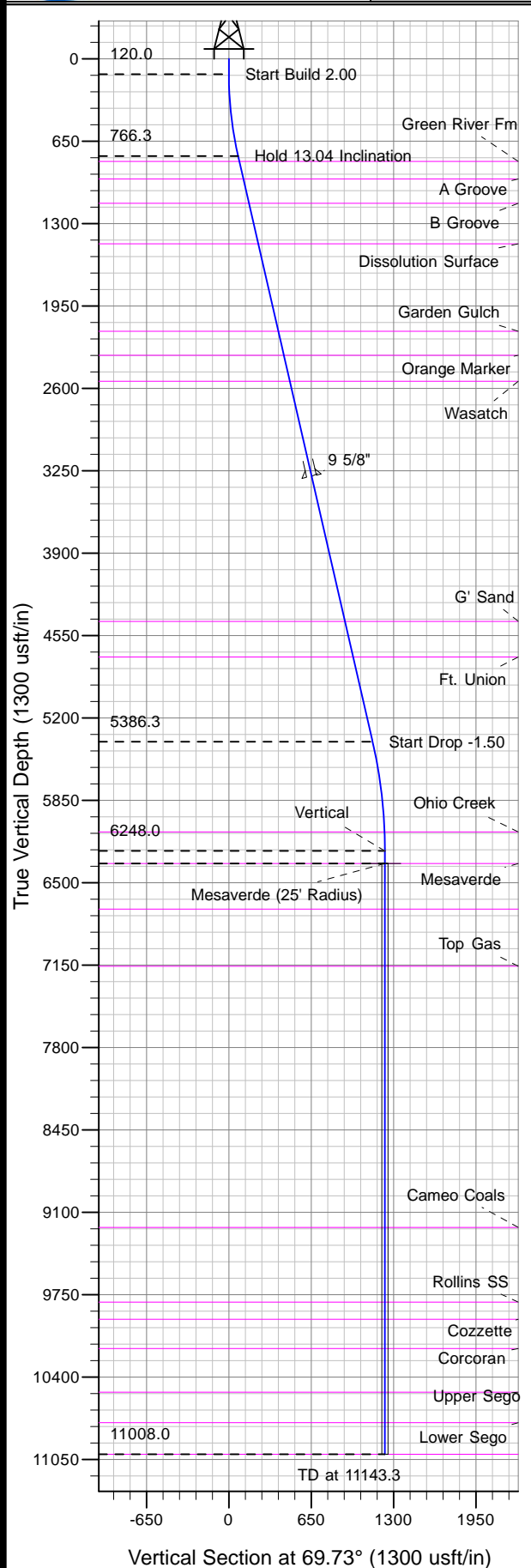




Well Name: Federal RG 434-14-298
Surface Location: Federal RG 24-14-298 Pad
North American Datum 1983 , US State Plane 1983 , Colorado Central Zone
Ground Elevation: 6686.0
+N/-S +E/-W Northing Easting Latitude Longitude Slot
0.0 0.0 1754554.60 2196446.80 39° 52' 13.088 N 108° 21' 47.353 W A7
KELLY BUSHING @ 6708.0usft (Frontier 10 (22' RKB) kjs)



Project: RG 14-02S-098W
Site: Federal RG 24-14-298 Pad
Well: Federal RG 434-14-298
Plan #2 13Apr11 kjs

Azimuths to True North
Magnetic North: 11.04°
Magnetic Field
Strength: 52801.5snT
Dip Angle: 66.09°
Date: 8/30/2007
Model: IGRF2005-10

ANNOTATIONS

TVD	MD	Inc	Azi	+N/-S	+E/-W	VSec	Departure	Annotation
120.0	120.0	0.00	0.00	0.0	0.0	0.0	0.0	Start Build 2.00
766.3	771.9	13.04	77.10	16.5	72.0	73.2	73.8	Hold 13.04 Inclination
5386.3	5514.2	13.04	77.10	255.4	1114.8	1134.2	1143.6	Start Drop -1.50
6248.0	6383.3	0.00	0.00	277.4	1210.7	1231.8	1242.1	Vertical
6348.0	6483.3	0.00	0.00	277.4	1210.7	1231.8	1242.1	Mesaverde
11008.0	11143.3	0.00	0.00	277.4	1210.7	1231.8	1242.1	TD at 11143.3