
WEXPRO COMPANY E-BILL

**BW Musser 72
POWDER WASH
Moffat County, Colorado**

Cement Surface Casing
26-Feb-2011

Post Job Report

The Road to Excellence Starts with Safety

| | | | | | | | |
|---|--|---------------------------|---|-------------------------------------|--|--------------------------------|--|
| Sold To #: 343491 | | Ship To #: 2838528 | | Quote #: | | Sales Order #: 7985467 | |
| Customer: WEXPRO COMPANY E-BILL | | | | Customer Rep: SST-88, Wexpro | | | |
| Well Name: BW Musser | | | Well #: 72 | | | API/UWI #: 05-081-07631 | |
| Field: POWDER WASH | | City (SAP): CRAIG | | County/Parish: Moffat | | State: Colorado | |
| Contractor: Wexpro | | | Rig/Platform Name/Num: SST 88 | | | | |
| Job Purpose: Cement Surface Casing | | | | | | | |
| Well Type: Development Well | | | Job Type: Cement Surface Casing | | | | |
| Sales Person: VOLNER, THOMAS | | | Srvc Supervisor: TIPPETTS, LLOYD | | | MBU ID Emp #: 441109 | |

Job Personnel

| HES Emp Name | Exp Hrs | Emp # | HES Emp Name | Exp Hrs | Emp # | HES Emp Name | Exp Hrs | Emp # |
|-----------------------|---------|--------|------------------|---------|--------|-------------------|---------|--------|
| CAUDILL, LOREN W | 10 | 476757 | DENT, JEROD Judd | 10 | 457336 | MCNUTT, GILBERT D | 10 | 455161 |
| TIPPETTS, LLOYD Allen | 10 | 441109 | VASQUEZ, VICENTE | 10 | 486817 | | | |

Equipment

| HES Unit # | Distance-1 way | HES Unit # | Distance-1 way | HES Unit # | Distance-1 way | HES Unit # | Distance-1 way |
|------------|----------------|------------|----------------|------------|----------------|------------|----------------|
| 10025066C | 100 mile | 10744715C | 100 mile | 11071575 | 100 mile | 11360547 | 100 mile |
| 11377690 | 100 mile | | | | | | |

Job Hours

| Date | On Location Hours | Operating Hours | Date | On Location Hours | Operating Hours | Date | On Location Hours | Operating Hours |
|--------------|-------------------|-----------------|--|-------------------|-----------------|------|-------------------|-----------------|
| 2/26/2011 | 10 | 3 | | | | | | |
| TOTAL | | | Total is the sum of each column separately | | | | | |

Job

| Formation Name | | | | | Job Times | | | |
|------------------------|-----------|-------------------|-----------|--|---------------|-----------------|-------|-----------|
| Formation Depth (MD) | Top | Bottom | | | Called Out | Date | Time | Time Zone |
| Form Type | | BHST | | | On Location | 26 - Feb - 2011 | 02:30 | MST |
| Job depth MD | 1530.8 ft | Job Depth TVD | 1530.8 ft | | Job Started | 26 - Feb - 2011 | 08:30 | MST |
| Water Depth | | Wk Ht Above Floor | 3. ft | | Job Completed | 26 - Feb - 2011 | 10:09 | MST |
| Perforation Depth (MD) | From | To | | | Departed Loc | 26 - Feb - 2011 | 11:23 | MST |
| | | | | | | | 18:00 | MST |

Well Data

| Description | Max pressure psig | Size in | ID in | Weight lbm/ft | Thread | Grade | Top MD ft | Bottom MD ft | Top TVD ft | Bottom TVD ft |
|------------------|-------------------|---------|-------|---------------|--------|-------|-----------|--------------|------------|---------------|
| Surface Openhole | | | 12.25 | | | | . | 1530.8 | | |
| Surface Casing | | 9.625 | 8.921 | 36. | | | . | 1530.8 | | |

Sales/Rental/3rd Party (HES)

| Description | Qty | Qty uom | Depth | Supplier |
|--|-----|---------|-------|----------|
| MICRO MATRIX RETARDER | 2 | GAL | | |
| PLUG,CMTG,TOP,9 5/8,HWE,8.16 MIN/9.06 MA | 1 | EA | | |
| PLUG,CMTG,BOT,9 5/8,HWE,8.16 MIN/9.06 MA | 1 | EA | | |

Tools and Accessories

| Type | Size | Qty | Make | Depth | Type | Size | Qty | Make | Depth | Type | Size | Qty | Make |
|--------------|-------|-----|------|---------|-------------|------|-----|------|-------|----------------|-------|-----|------|
| Guide Shoe | | | | | Packer | | | | | Top Plug | 9.625 | 1 | HES |
| Float Shoe | 9.625 | 1 | COMP | 1530.79 | Bridge Plug | | | | | Bottom Plug | | | |
| Float Collar | 9.625 | 1 | COMP | 1482.07 | Retainer | | | | | SSR plug set | | | |
| Insert Float | | | | | | | | | | Plug Container | 9.625 | 1 | HES |
| Stage Tool | | | | | | | | | | Centralizers | 9.625 | 7 | COMP |

Miscellaneous Materials

| Gelling Agt | Conc | Surfactant | Conc | Acid Type | Qty | Conc | % |
|---------------|------|------------|------|-----------|------|------|---|
| Treatment Fld | Conc | Inhibitor | Conc | Sand Type | Size | Qty | |

| Fluid Data | | | | | | | | | | |
|--|-------------|---|--------|-----------------------------------|------------------------|---------------------------|------------------|--------------|------------------------|--|
| Stage/Plug #: 1 | | | | | | | | | | |
| Fluid # | Stage Type | Fluid Name | Qty | Qty uom | Mixing Density lbm/gal | Yield ft ³ /sk | Mix Fluid Gal/sk | Rate bbl/min | Total Mix Fluid Gal/sk | |
| 1 | Fresh Water | | 20.00 | bbl | 8.33 | .0 | .0 | .0 | | |
| 2 | Mountain G | CMT - PREMIUM - CLASS G, 94 LB SK (100003685) | 795.0 | sacks | 15.8 | 1.15 | 4.97 | | 4.97 | |
| | 94 lbm | CMT - PREMIUM - CLASS G REG OR TYPE V, BULK (100003685) | | | | | | | | |
| | 0.125 lbm | POLY-E-FLAKE (101216940) | | | | | | | | |
| | 4.968 Gal | FRESH WATER | | | | | | | | |
| 3 | WBM | | 114.60 | bbl | 8.4 | .0 | .0 | .0 | | |
| Calculated Values | | Pressures | | Volumes | | | | | | |
| Displacement | 114.6 | Shut In: Instant | | Lost Returns | 0 | Cement Slurry | 162.8 | Pad | | |
| Top Of Cement | SURFACE | 5 Min | | Cement Returns | 40 | Actual Displacement | 114.6 | Treatment | | |
| Frac Gradient | | 15 Min | | Spacers | 20 | Load and Breakdown | | Total Job | 302.4 | |
| Rates | | | | | | | | | | |
| Circulating | 7 | Mixing | 6 | Displacement | 5 | Avg. Job | 5 | | | |
| Cement Left In Pipe | Amount | 45 ft | Reason | Shoe Joint | | | | | | |
| Frac Ring # 1 @ | ID | Frac ring # 2 @ | ID | Frac Ring # 3 @ | ID | Frac Ring # 4 @ | ID | | | |
| The Information Stated Herein Is Correct | | | | Customer Representative Signature | | | | | | |

The Road to Excellence Starts with Safety

| | | | |
|---|---------------------------|--|-------------------------------|
| Sold To #: 343491 | Ship To #: 2838528 | Quote #: | Sales Order #: 7985467 |
| Customer: WEXPRO COMPANY E-BILL | | Customer Rep: SST-88, Wexpro | |
| Well Name: BW Musser | Well #: 72 | API/UWI #: 05-081-07631 | |
| Field: POWDER WASH | City (SAP): CRAIG | County/Parish: Moffat | State: Colorado |
| Legal Description: | | | |
| Lat: N 0 deg. OR N 0 deg. 0 min. 0 secs. | | Long: E 0 deg. OR E 0 deg. 0 min. 0 secs. | |
| Contractor: Wexpro | | Rig/Platform Name/Num: SST 88 | |
| Job Purpose: Cement Surface Casing | | | Ticket Amount: |
| Well Type: Development Well | | Job Type: Cement Surface Casing | |
| Sales Person: VOLNER, THOMAS | | Srv Supervisor: TIPPETTS, LLOYD | MBU ID Emp #: 441109 |

| Activity Description | Date/Time | Cht # | Rate bbl/min | Volume bbl | | Pressure psig | | Comments |
|---|---------------------|-------|--------------|------------|-------|---------------|--------|--|
| | | | | Stage | Total | Tubing | Casing | |
| Call Out | 02/26/2011 02:30 | | | | | | | HES CREW CALLED OUT FOR JOB |
| Safety Meeting - Service Center or other Site | 02/26/2011 05:00 | | | | | | | SAFETY MEETING WITH HES CREW DISCUSS DIRECTION, WEATHER CONDITIONS, SAFETY, AND ALL HES POLICIES. |
| Depart from Service Center or Other Site | 02/26/2011 05:30 | | | | | | | DEPART ROCK SPRINGS YARD FOR WEXPRO SST-88 |
| Safety Meeting - Departing Location | 02/26/2011 06:00 | | | | | | | SAFETY MEETING WITH HES CREW DISCUSS DIRECTION, WEATHER CONDITIONS, SAFETY, AND ALL HES POLICIES. |
| Arrive At Loc | 02/26/2011 08:30 | | | | | | | ARRIVE AT WEXPRO SST-88 |
| Safety Meeting - Pre Rig-Up | 02/26/2011 08:45 | | | | | | | SAFETY MEETING WITH HES CREW DISCUSS SAFETY CONCERNS, SPOTING OF EQUIPMENT, JOB PROCEDURES, AND ALL HES POLICIES |
| Rig-Up Equipment | 02/26/2011 08:55 | | | | | | | RIG-UP EQUIPMENT ON GROUND. |

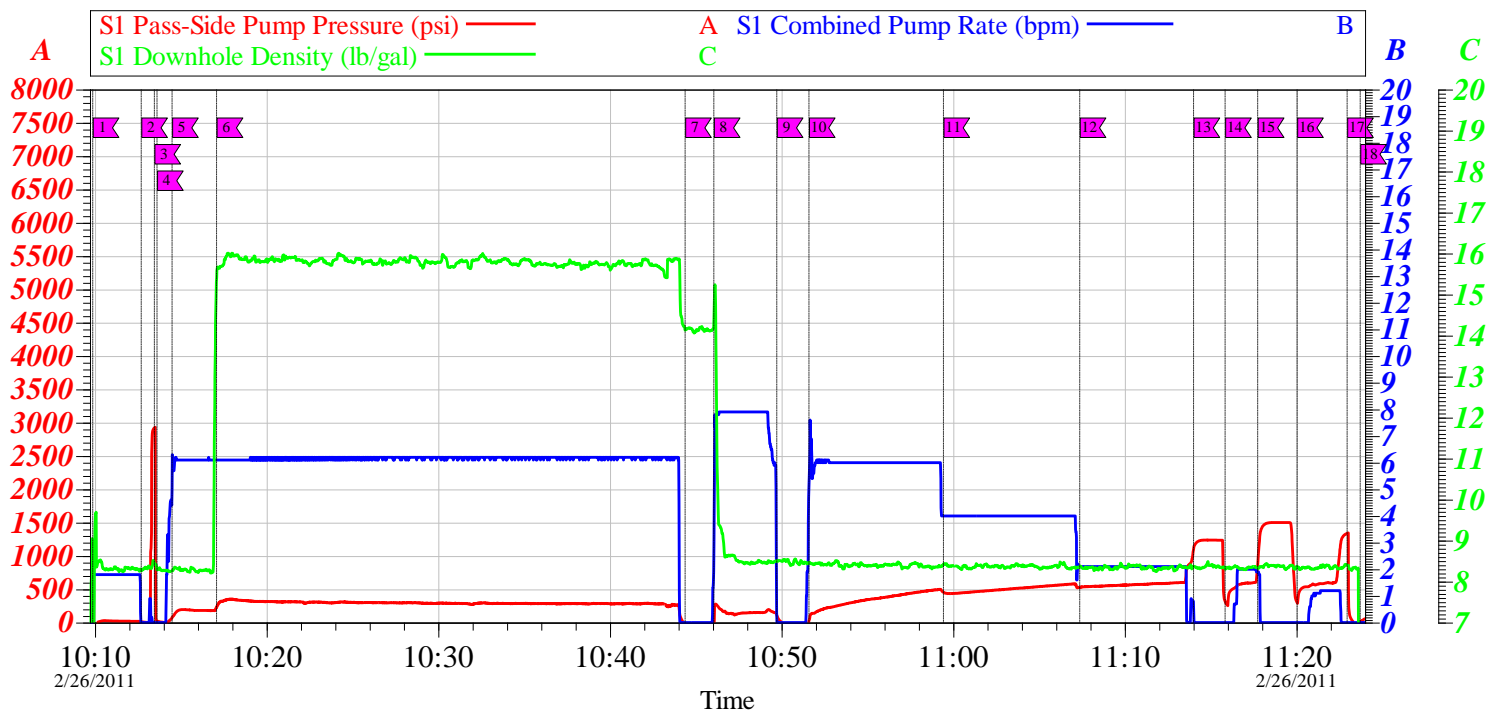
| Activity Description | Date/Time | Cht # | Rate bbl/ min | Volume bbl | | Pressure psig | | Comments |
|-----------------------------|---------------------|----------|---------------------|---------------|-------|------------------|------------|---|
| | | | | Stage | Total | Tubing | Casing | |
| Other | 02/26/2011 09:00 | | | | | | | 9.625' ,36#,J-55 CASING ON BOTTOM @ 09:00 ,SET @ 1530.79' , CIRCULATING @ 7 BARRELS/MIN , WITH 320 PSI, 0 UNITS GAS. |
| Safety Meeting - Pre Rig-Up | 02/26/2011 09:30 | | | | | | | SAFETY MEETING WITH HES CREW, RIG CREW, AND COMPANY REP. DISCUSS SAFETY CONCERNS, SPOTING OF EQUIPMENT, JOB PROCEDURES,AND ALL HES POLICIES |
| Rig-Up Equipment | 02/26/2011 09:55 | | | | | | | FINAL RIG-UP OF EQUIPMENT |
| Pump Water | 02/26/2011 10:09 | 1 | 2 | 5 | 5 | | .0 | PUMP 5 BARRELS H2O TO FILL PUMPS AND LINE SAND BREAK CIRCULATION |
| Shutdown | 02/26/2011 10:12 | 2 | | | | | | |
| Pressure Test | 02/26/2011 10:13 | 3 | | | | | 2922. 0 | PRESSURE TEST HES IRON TO 2000 PSI |
| Release Casing Pressure | 02/26/2011 10:13 | 4 | | | | | | RELEASE PRESSURE OFF HES IRON |
| Pump Spacer | 02/26/2011 10:14 | 5 | 5 | 20 | 25 | | 75.0 | PUMP 20 BARRELS FRESH WATER SPACER |
| Pump Lead Cement | 02/26/2011 10:17 | 6 | 6 | 162.8 | 187.8 | | 222.0 | MIX AND PUMP 795 SKS LEAD CEMENT @ 15.8 PPG, 1.15 CF/SK, 4.97 GPS |
| Shutdown | 02/26/2011 10:44 | 7 | | | | | | SHUT DOWN, AND DROP PLUG. |
| Other | 02/26/2011 10:45 | 7 | | | | | | PLUG WITNESSED BY COMPANY REP. |
| Pump Displacement | 02/26/2011 10:46 | 8 | 8 | 10 | 197.8 | | .0 | PUMP 10 BARRELS FRESH WATER DISPLACEMENT. |
| Shutdown | 02/26/2011 10:49 | 9 | | | | | | SHUTDOWN TO VERIFY THAT PLUG LEFT PLUG CONTAINER/ PER COMPANY REPRESENTATIVE. |

| Activity Description | Date/Time | Cht # | Rate bbl/min | Volume bbl | | Pressure psig | | Comments |
|-------------------------------|------------------|-------|--------------|------------|-------|---------------|--------|---|
| | | | | Stage | Total | Tubing | Casing | |
| Pump Displacement | 02/26/2011 10:51 | 10 | 6 | 104.6 | 302.4 | | 21.0 | PUMP REMAINING 104.564 BARRELS OF FRESH WATER DISPLACEMENT. |
| Slow Rate | 02/26/2011 10:59 | 11 | 4 | 60 | 242.3 | | 456.0 | SLOW RATE TO 2 BARRELS MIN. WITH 60 BARRELS DISPLACEMENT AWAY. |
| Slow Rate | 02/26/2011 11:07 | 12 | 2 | 104.6 | 292.3 | | 531.0 | SLOW RATE TO 2 BARRELS MIN. WITH 104.564 BARRELS DISPLACEMENT AWAY. |
| Bump Plug | 02/26/2011 11:14 | 13 | | | | | | BUMP PLUG WITH 114.564 BARRELS DISPLACEMENT AWAY. FINAL CIRCULATING PRESSURE 660 PSI. |
| Check Floats | 02/26/2011 11:15 | 14 | | | | | | CHECK FLOATS. FLOATS DID NOT HOLD |
| Bump Plug | 02/26/2011 11:17 | 15 | | | | | | PRESSURE BACK UP ON CASING TO RE-LAND PLUG |
| Check Floats | 02/26/2011 11:20 | 16 | | | | | | CHECK FLOATS. FLOATS DID NOT HOLD |
| Bump Plug | 02/26/2011 11:22 | 17 | | | | | 695.0 | PRESSURE BACK UP ON CASING TO RE-LAND PLUG, BROUGHT PRESSURE TO 695 PSI, SHUT IN WELL AND WAIT FOR 6 HOURS. |
| Other | 02/26/2011 11:23 | 18 | | | | | | CLOSED IN WELL FOR 6 HOURS . |
| Safety Meeting - Pre Rig-Down | 02/26/2011 11:30 | | | | | | | SAFETY MEETING WITH HES CREW DISCUSS SAFETY CONCERNS, JOB PROCEDURES,AND ALL HES POLICIES |
| Rig-Down Equipment | 02/26/2011 11:45 | | | | | | | RIG-DOWN ALL EQUIPMENT. |

Cementing Job Log

| Activity Description | Date/Time | Cht # | Rate bbl/ min | Volume bbl | | Pressure psig | | Comments |
|----------------------|---------------------|----------|---------------------|---------------|-------|------------------|--------|--|
| | | | | Stage | Total | Tubing | Casing | |
| Other | 02/26/2011 18:01 | | | | | | | GOOD FULL RETURNS THROUGHOUT JOB,40 BARRELS CEMENT TO SURFACE |

WEXPRO SST-88 MUSSER WELL#72 SURFACE SO#7985467



| Intersection | | Local Event Log | | | Intersection | | SCPR SDD SPPP | | |
|--------------|--|-----------------|-------|-------|--------------|----|---|----------|--------------------|
| 1 | FILL LINES | 10:09:52 | 1.360 | 1.757 | -7.734 | 2 | SHUT DOWN | 10:12:42 | 0.000 8.286 14.00 |
| 3 | PRESSURE TEST | 10:13:27 | 0.000 | 8.446 | 2922 | 4 | RELEASE PRESSURE | 10:13:37 | 0.000 8.290 25.42 |
| 5 | PUMP WATER SPACER | 10:14:29 | 4.882 | 8.260 | 75.46 | 6 | PUMP LEAD CEMENT | 10:17:05 | 6.100 15.38 222.7 |
| 7 | SHUTDOWN/DROP PLUG | 10:44:23 | 0.000 | 14.13 | -15.76 | 8 | PUMP DISPLACEMENT | 10:46:03 | 2.321 14.29 -19.35 |
| 9 | SHUTDOWN/VERIFY THAT PLUG LEFT CONTAINER | 10:49:43 | 0.161 | 8.504 | 109.8 | 10 | PUMP DISPLACEMENT | 10:51:35 | 4.987 8.453 21.76 |
| 11 | SLOW RATE | 10:59:26 | 4.000 | 8.421 | 456.7 | 12 | SLOW RATE | 11:07:22 | 2.100 8.360 531.1 |
| 13 | LAND PLUG | 11:14:00 | 0.642 | 8.370 | 1097 | 14 | CHECK FLOATS/ FLOATS DID NOT HOLD | 11:15:50 | 0.000 8.319 322.1 |
| 15 | RE-LAND PLUG | 11:17:45 | 1.900 | 8.326 | 864.7 | 16 | CHECK FLOATS/FLOATS DID NOT HOLD | 11:20:02 | 0.000 8.360 302.5 |
| 17 | RE-LAND PLUG /CLOSE IN MANIFOLD | 11:22:57 | 0.000 | 8.400 | 1340 | 18 | LEAVE CEMENT HEAD LOCKED ON FOR 6 HOURS | 11:23:43 | 0.000 0.539 21.81 |

Customer: WEXPRO SST-88

Well Description: 72

Job Date: 26-Feb-2011

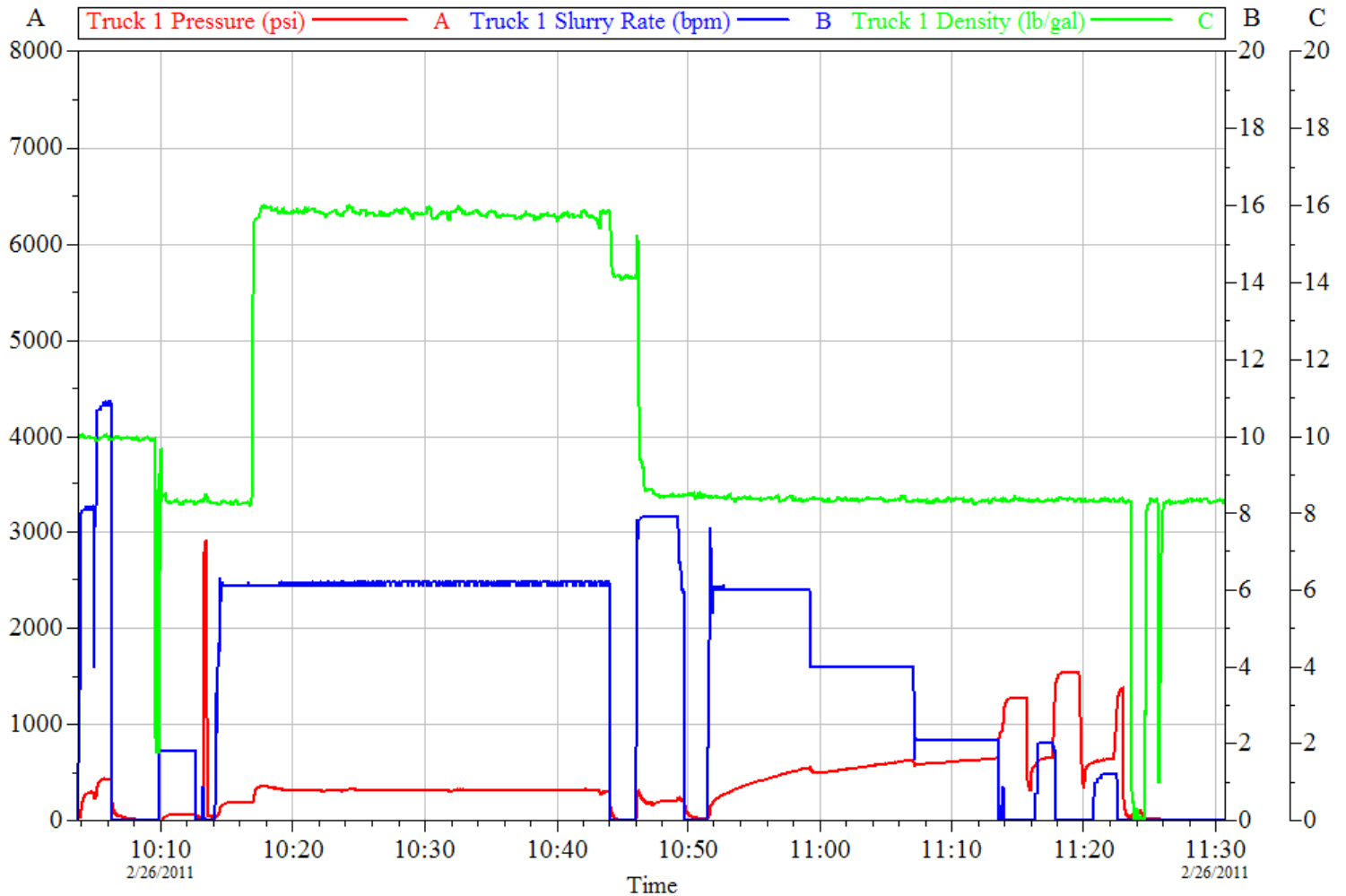
Job Type: SURFACE

Sales Order #: 7985467

Service Supervisor: ALLEN TIPPETTS

OptiCem v6.4.6
26-Feb-11 11:52

WEXPRO SST-88 MUSSER WELL #72 SURFACE SO#7985467



| | | |
|-------------------------|-----------------------|-----------------------------------|
| Customer: WEXPRO SST-88 | Job Date: 26-Feb-2011 | Sales Order #: 7985467 |
| Well Description: 72 | UWI: | SERVICE SUPERVISOR ALLEN TIPPETTS |

OptiCem v6.4.9
05-Apr-11 10:11