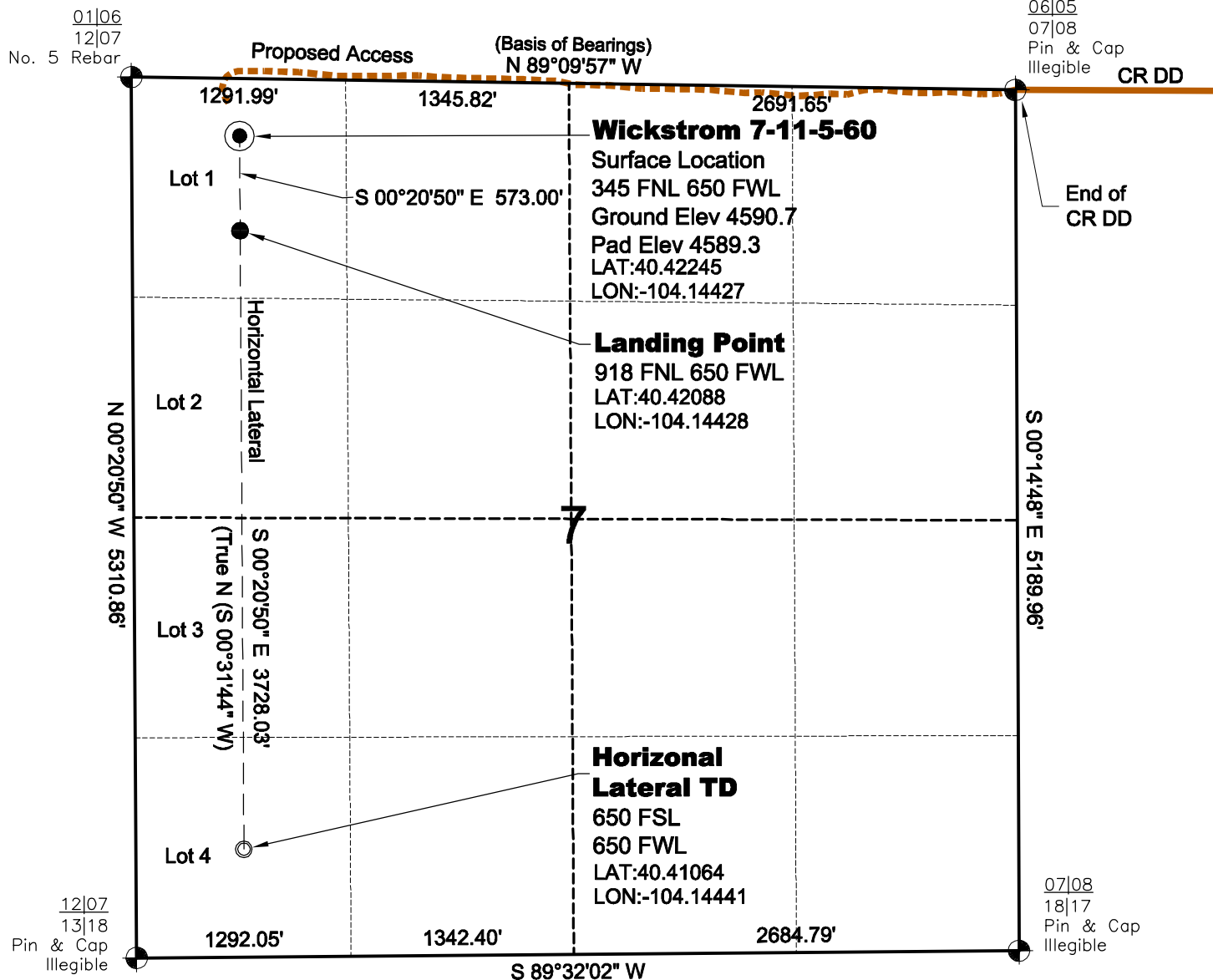


WELL LOCATION MAP

**WICKSTROM
7-11-5-60 PAD**



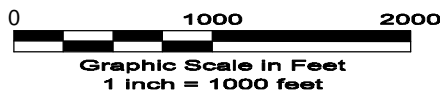
SURVEYOR'S STATEMENT

The undersigned hereby states that the well location shown hereon was staked on the ground based on existing monumentation and/or physical evidence found in the field and is correct to the best of my knowledge, information and belief.



NOTES

- 1.) Coordinates based on NGS control point "PID-LL0078" with an elevation of 4411.08. NAVD 1988.
 - 2.) All directions, distances, and dimensions shown hereon are based on coordinates from the "Colorado coordinate system of 1983 north zone" (article 52 of title 38, C.R.S.).
 - 3.) All section line dimensions shown hereon are based on field measurements of existing monuments and/or physical evidence found in the field unless otherwise indicated. Refer to land survey plats deposited in Morgan County.
 - 4.) Physical features shown hereon are for graphical representation only.
 - 5.) See Form 2A for visible improvements within 400' of wellhead.
 - 6.) Distances to nearest section lines are measured perpendicularly.
 - 7.) This is not a land survey nor land survey plat.
 - 8.) Date of Survey 2/15/11; Date of Drawing 3/15/11. REV 2
- PDOP Reading: 2.3 Instrument Operator: George Allen



GEO SURV

LAND SURVEYING AND MAPPING
LAFAYETTE - WINTER PARK
Ph 303 666 0379 Fx 303 665 6320

CARRIZO OIL & GAS, INC
WICKSTROM 7-11-5-60

SL LOT 1 SEC. 7 T5N R60W
HL TD SW1/4 SW1/4 SEC. 7 T5N R60W
6th PM MORGAN COUNTY COLORADO