

# Schlumberger Carbon Services

Well location, RMCCS State No.1, located as shown in the SW $\frac{1}{4}$ SE $\frac{1}{4}$  Section 34, T6N, R91W, 6th P.M., Moffat County, Colorado.

## Basis of Elevation

Elevations are based on Static GPS observations, post processed. Elevation = 6832 NAVD 88.

## Basis of Bearing

Bearings are based on Static GPS observations of existing HARN points and post processed to provide NAD83 coordinates.

NAD 83 SHL

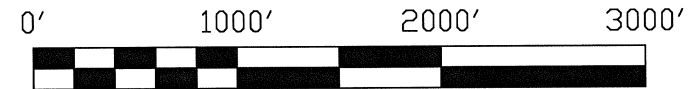
Latitude = N40°25'38.91468" (N40.427476 Degrees)

Longitude = W107°35'23.11365" (W107.589754 Degrees)

NAD 83 BHL

Latitude = \_\_\_\_\_

Longitude = \_\_\_\_\_



Scale 1" = 1000 U.S. feet

## Surveyors Statement

I, Peter Epp, a duly registered Professional Land Surveyor in the State of Colorado do hereby certify that the survey represented by this drawing was done by me or under my direct supervision and is in accordance with the applicable standards of practice and is accurate based upon my knowledge, information and belief and accordingly shows the location of RMCCS State No.1.

Peter Epp Colorado P.L.S. No. 14815

Observed PDOP of 1.4. Observations are in compliance with COGCC Rule No. 215. P. Epp operator.

**EPP & ASSOCIATES, INC.**  
PROFESSIONAL LAND SURVEYORS

433 4th Avenue West  
P.O. Box 837  
Craig, CO 81625

Phone (970) 824-8236  
Fax (970) 824-5227

**Schlumberger Carbon Services**  
**RMCCS State No.1**

Scale	Date	Drawing No.	Drawn By	Job No.
1" = 1000'	16jul11		P. Epp	11.115-01

N 89°00' E 2611.62'  
S 89°20'20" E 2574.29'

N 89°00' E 2611.62'  
S 89°20'36" E 2574.79'

N 0°05' W 2619.87'  
N 03°00'05" E 2626.98'

N 0°05' W 2619.87'  
N 01°30'32" E 2644.38'

S 01°35'21" W 2670.61'  
S 0°30' E 2642.64'

S 00°35'01" W 2613.73'  
S 0°30' E 2642.64'

N 89°10'35" W 2627.89'  
S 89°27' W 2627.13'

N 89°10'35" W 2627.89'  
S 89°27' W 2627.13'

## Explanation

- — Denotes found 3.25" alloy cap monument by PLS No. 14815
- — Denotes position based on Trapper Mine surveyor data obtained prior to removal of monument by strip mining. No monument found or set.
- └ — Denotes 90° symbol
- ⊙ — Well Location
- SHL — Denotes Surface Location of Hole
- BHL — Denotes Intended Bottom Location of Hole

Denotes GLO dimension

Denotes measured dimension

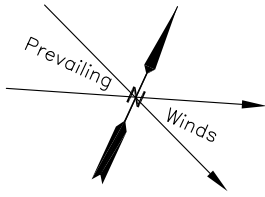
High Desert Plateau. No visible improvements within 400 foot radius of well site except as shown. Surface use is unreclaimed coal mine.

The word "certify" or "certification" as used herein is understood to be an expression of professional opinion by the surveyor, based upon his best knowledge, information, and belief. As such, it does not constitute a guarantee, nor a warranty, expressed or implied.

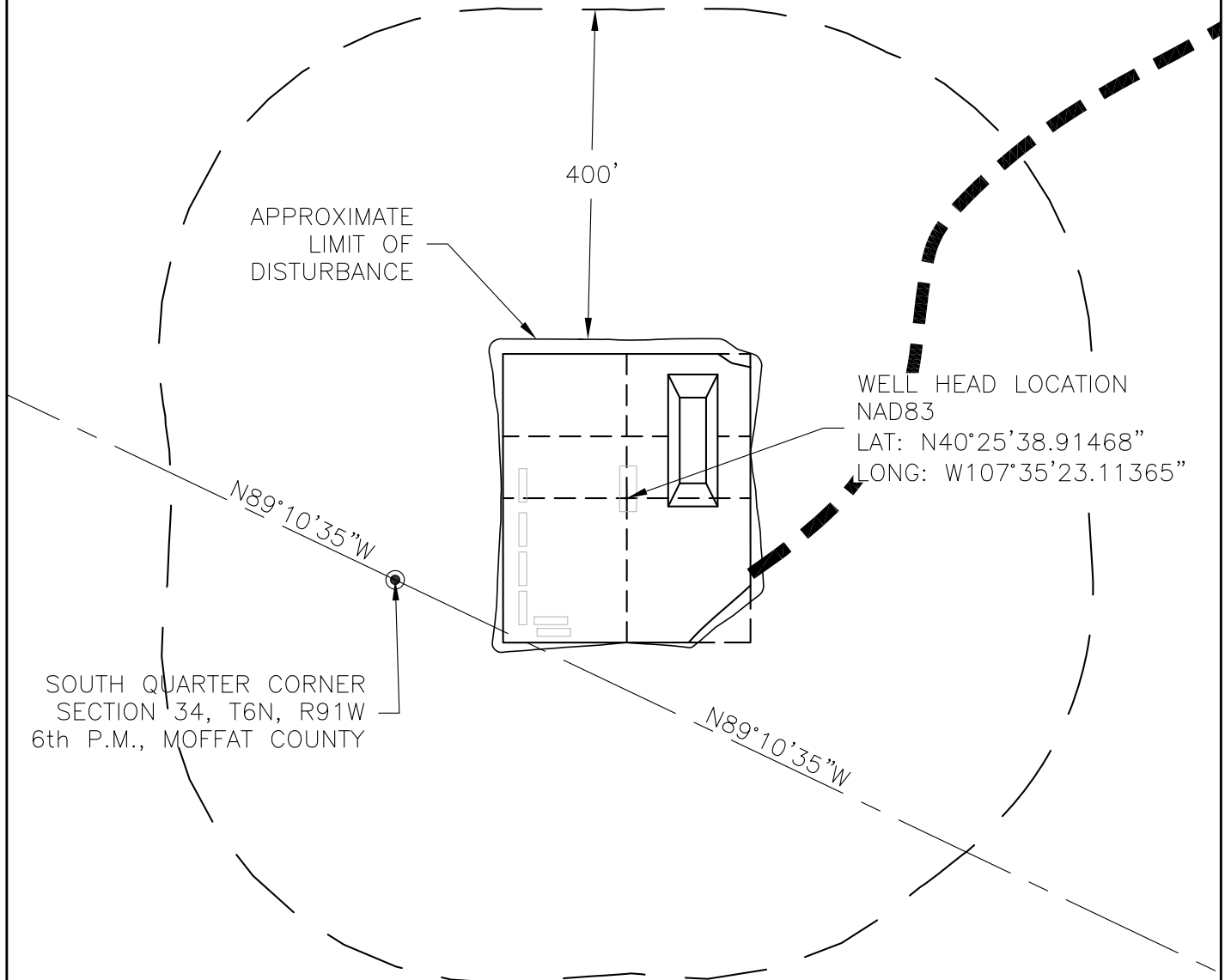
# SCHLUMBERGER CARBON SERVICES

## LOCATION DRAWING FOR

RMCCS State No. 1 Well  
SECTION 34, T6N, R91W, 6th P.M.  
210' FSL 2416' FEL



SCALE 1"=200'  
DATE: 08-23-11  
Drawn By: LD



NOTE:  
No visible improvements with 400' of well location. Well located in an inactive mine pit.

## LOCATION MAP

SCALE 1" = 400'

### LEGEND:

- Proposed Access Road
- 400' Setback from Edge of Disturbed



EPP & ASSOCIATES, INC.  
PROFESSIONAL LAND SURVEYORS  
433 4th Avenue West  
P.O. Box 837  
Craig, CO 81625  
Phone (970) 824-8236  
Fax (970) 824-5227