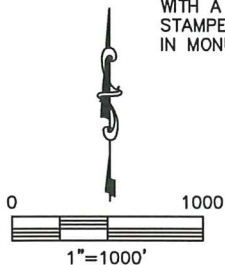
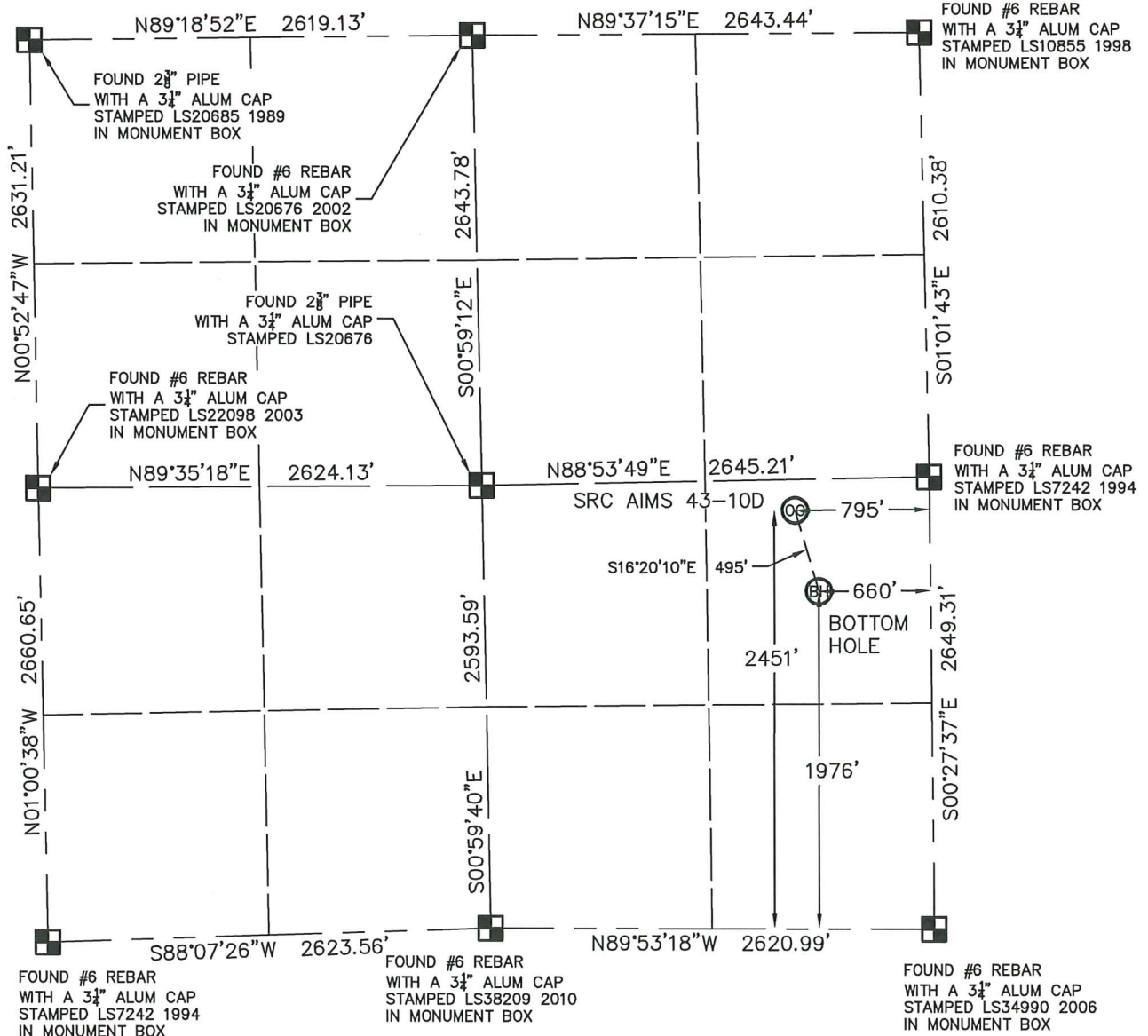


WELL LOCATION CERTIFICATE

SRC AIMS 43-10D

THIS MAP DOES NOT REPRESENT A BOUNDARY SURVEY

SECTION: 10
TOWNSHIP: 5N
RANGE: 66W

In accordance with a request from CRAIG RASMUSON with SYNERGY RESOURCES CORPORATION King Surveyors Inc. has determined the surface location of SRC AIMS 43-10D to be 2451' from the SOUTH line and 795' from the EAST line and the bottom hole to be 1976' from the SOUTH line and 660' from the EAST line, as measured at right angles, from the section lines of Section 10, Township 5 North, Range 66 West of the Sixth Principal Meridian, County of Weld, State of Colorado.

I hereby state that this Well Location Certificate was prepared by me, or under my direct supervision, that the fieldwork was completed on 9-14-2011, for and on behalf of SYNERGY RESOURCES CORPORATION. That this is not a Land Survey Plat or an Improvement Survey Plat, and that it is not to be relied upon for establishment of fence, building, or other future improvement lines.

NOTE:

- 1) Bearings shown are Grid Bearings of the Colorado State Plane Coordinate System, North Zone, North American Datum 1983/2007. The lineal dimensions as contained herein are based upon the "U.S. Survey Foot."
- 2) Ground elevations are based on an observed GPS elevation (NAVD 1988 DATUM).
- 3) NEAREST EXISTING WELL: NO EXISTING WELLS IN THIS SECTION
- 4) IMPROVEMENTS: See LOCATION DRAWING exhibit for all visible improvements within 400' of disturbed area.
- 5) SURFACE USE: OPEN FIELD
- 6) FIELD OPERATOR: CHAD DILKA

SURFACE LOCATION

LATITUDE: 40.41362°N
LONGITUDE: 104.75915°W
PDOP: 1.5
ELEV: 4858'
1/4, 1/4: NE 1/4 SE 1/4
NEAREST PROPERTY LINE: 181' NORTH

BOTTOM HOLE

LATITUDE: 40.41231°N
LONGITUDE: 104.75866°W

NOTE

According to Colorado law, you must commence any legal action based upon any defect in this W.L.C. within three years after you discover such defect. In no event, may any action based upon any defect in this survey be commenced more than ten years after the date of the certificate shown hereon. (13-80-105 C.R.S.)

LEGEND

- = FOUND ALIQUOT MONUMENT AS DESCRIBED
- = CALCULATED POSITION
- = SET ALIQUOT MONUMENT AS DESCRIBED

9/15/2011

Michael Chad Dilka - On Behalf Of King Surveyors, Inc.
Colorado Licensed Professional Land Surveyor #38106

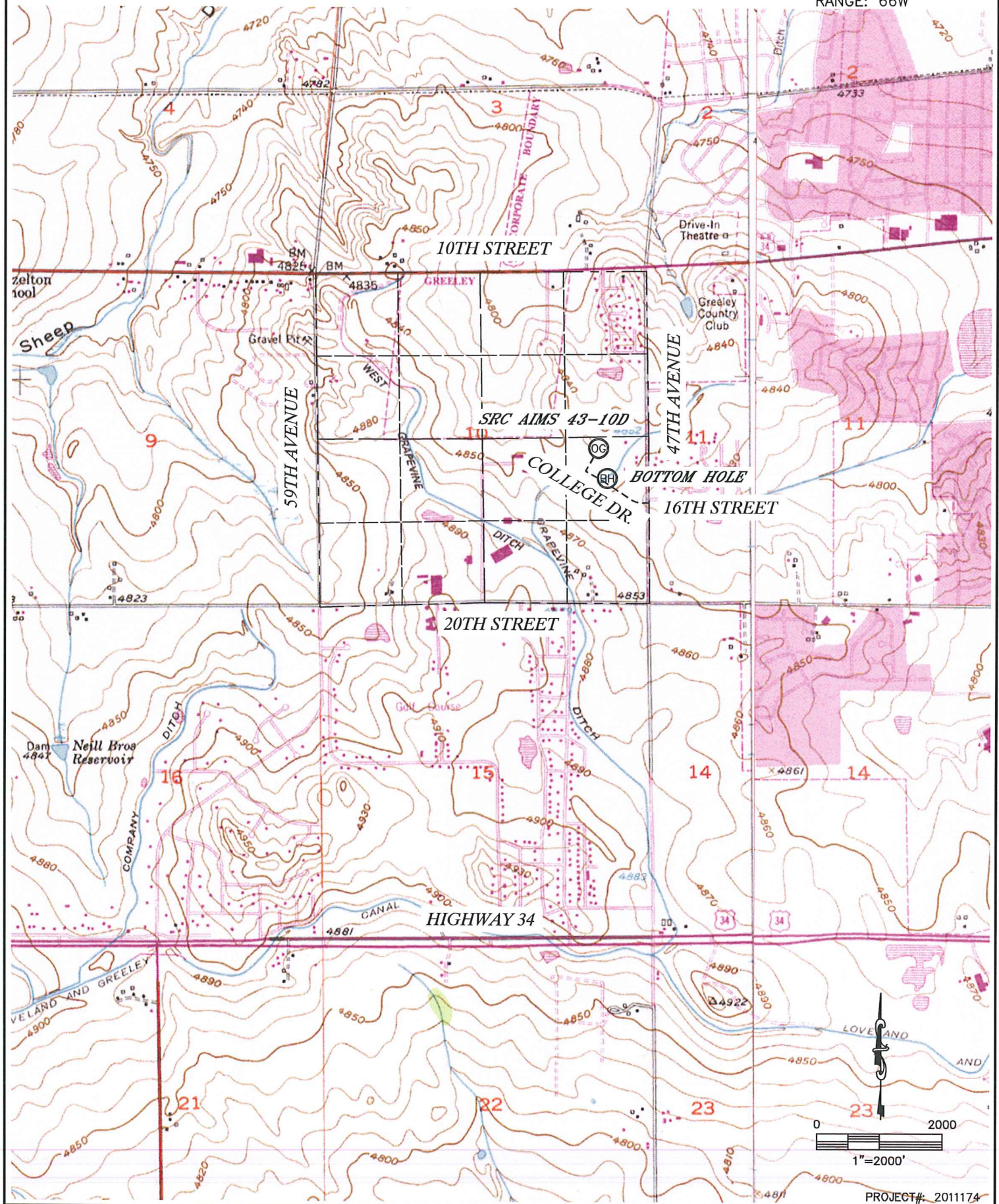
PROJECT#: 2011174

KING SURVEYORS, INC. 650 E. GARDEN DR. WINDSOR, CO 80550

ACCESS ROAD MAP

SRC AIMS 43-10D

SECTION: 10
TOWNSHIP: 5N
RANGE: 66W



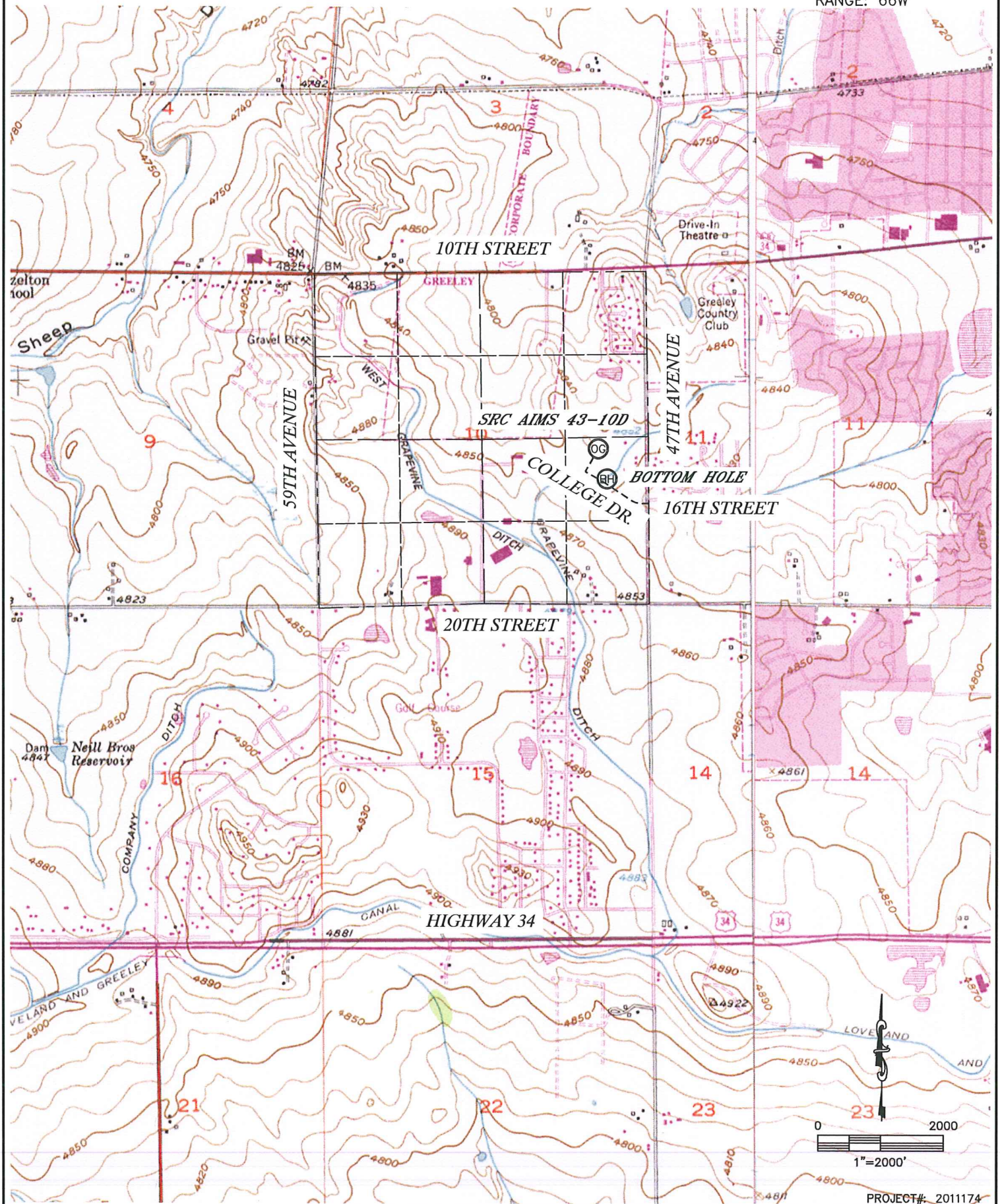
PROJECT# 2011174

KING SURVEYORS, INC. 650 E. GARDEN DR. WINDSOR, CO 80550

TOPOGRAPHIC MAP

SRC AIMS 43-10D

SECTION: 10
TOWNSHIP: 5N
RANGE: 66W

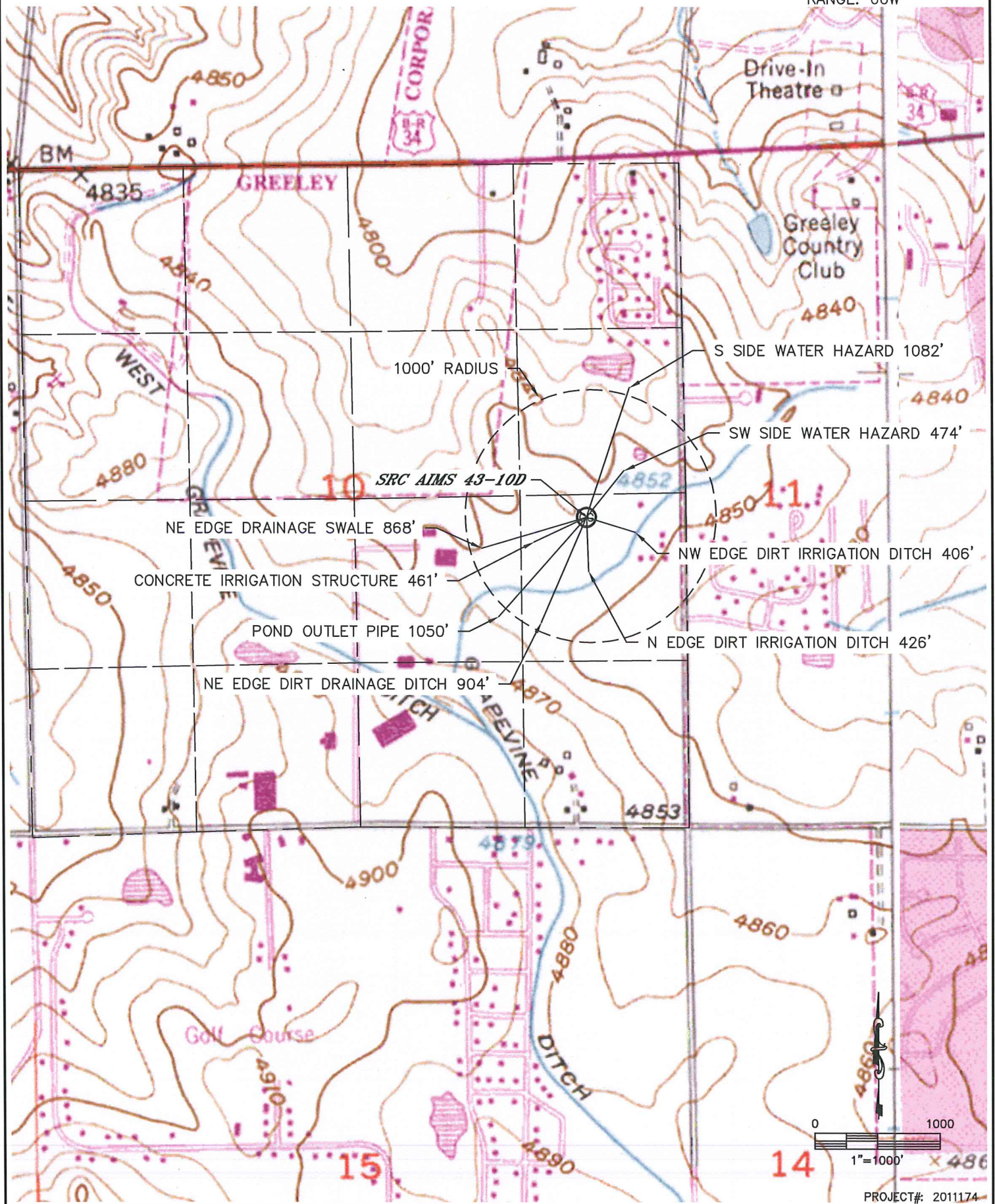


PROJECT# 2011174

HYDROLOGY MAP

SRC AIMS 43-10D

SECTION: 10
TOWNSHIP: 5N
RANGE: 66W



SRC AIMS 43-10D
TOWNSHIP 5 NORTH, RANGE 66 WEST
SECTION 10: NE1/4SE1/4
WELD COUNTY, COLORADO

WELL FACING NORTH
PICTURE DATED: 9/14/2011



WELL FACING SOUTH
PICTURE DATED: 9/14/2011



SRC AIMS 43-10D
TOWNSHIP 5 NORTH, RANGE 66 WEST
SECTION 10: NE1/4SE1/4
WELD COUNTY, COLORADO

WELL FACING EAST
PICTURE DATED: 9/14/2011



WELL FACING WEST
PICTURE DATED: 9/14/2011



SRC AIMS 43-10D
TOWNSHIP 5 NORTH, RANGE 66 WEST
SECTION 10: NE1/4SE1/4
WELD COUNTY, COLORADO

REFERENCE AREA FACING WEST
PICTURE DATED: 9/14/2011

