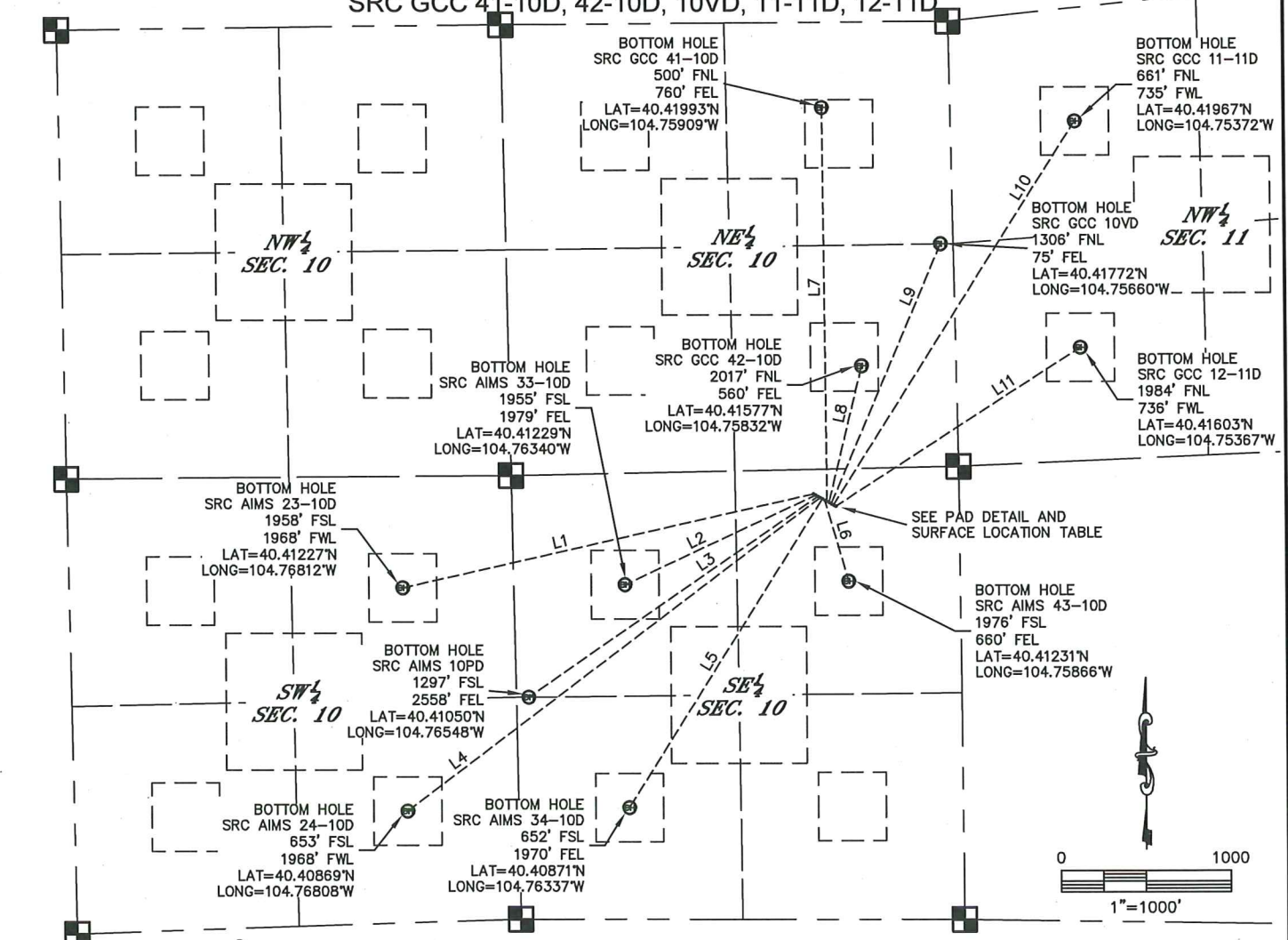


MULTI-WELL PAD SKETCH

SRC AIMS 23-10D, 33-10D, 10PD, 24-10D, 34-10D, 43-10D

SRC GCC 41-10D, 42-10D, 10VD, 11-11D, 12-11D

SECTION: 10
TOWNSHIP: 5N
RANGE: 66W

SURFACE LOCATIONS

(NORTHWEST TO SOUTHEAST)

SRC AIMS 23-10D
2487' FSL
861' FEL
LATITUDE=40.41372°N
LONGITUDE=104.75938°W

SRC AIMS 33-10D
2480' FSL
848' FEL
LATITUDE=40.41370°N
LONGITUDE=104.75933°W

SRC AIMS 10PD
2473' FSL
835' FEL
LATITUDE=40.41368°N
LONGITUDE=104.75929°W

SRC AIMS 24-10D
2466' FSL
822' FEL
LATITUDE=40.41366°N
LONGITUDE=104.75924°W

SRC AIMS 34-10D
2458' FSL
808' FEL
LATITUDE=40.41364°N
LONGITUDE=104.75919°W

SRC AIMS 43-10D
2451' FSL
795' FEL
LATITUDE=40.41362°N
LONGITUDE=104.75915°W

SRC GCC 41-10D
2444' FSL
782' FEL
LATITUDE=40.41360°N
LONGITUDE=104.75910°W

SRC GCC 42-10D
2437' FSL
769' FEL
LATITUDE=40.41358°N
LONGITUDE=104.75905°W

SRC GCC 10VD
2430' FSL
756' FEL
LATITUDE=40.41356°N
LONGITUDE=104.75900°W

SRC GCC 11-11D
2423' FSL
743' FEL
LATITUDE=40.41354°N
LONGITUDE=104.75896°W

SRC GCC 12-11D
2416' FSL
730' FEL
LATITUDE=40.41352°N
LONGITUDE=104.75891°W

PAD DETAIL (nts)

LINE TABLE

LINE	BEARING	LENGTH
L1	S77°18'03"W	2491'
L2	S65°08'34"W	1242'
L3	S55°38'09"W	2076'
L4	S53°11'14"W	3056'
L5	S32°27'00"W	2138'
L6	S16°20'10"E	495'
L7	N00°25'58"W	2308'

L8	N13°48'50"E	823'
L9	N23°18'38"E	1657'
L10	N32°38'39"E	2669'
L11	N57°26'33"E	1722'

PROJECT#: 2011174