



SUPERIOR
Black Lick, Pa.
Mercer, Pa.
Wooster, Oh.
Cleveland, Ok.
Trinidad, Co.

GAMMA RAY C.C.L.
CEMENT BOND V.D.L.

Company NOBLE ENERGY INC.

Well WELLS RANCH USX AE31-07P

Field WATTENBERG

County WELD State COLORADO

Location: API # : 05 123 30899

1937' FSL & 1936' FEL
SWNE

SEC 31 TWP 6N RGE 62W

Permanent Datum GL Elevation 4710
Log Measured From KB
Drilling Measured From KB

Other Services
Elevation
K.B. 4726
D.F. 4725
G.L. 4710

Date 26-JUNE-2010

Run Number ONE

Depth Driller 6800

Depth Logger 6724

Bottom Logged Interval 6723

Top Log Interval 1785

Open Hole Size 7-7/8"

Type Fluid WATER

Density / Viscosity N/A

Max. Recorded Temp. 232° F

Estimated Cement Top 1946

Time Well Ready MAST UNIT

Time Logger on Bottom 1-11/16LH

Equipment Number 0700

Location 45

Recorded By LEROY HOBBS

Witnessed By E. ZWAAGSTRA

Borehole Record

Tubing Record

To

From

Size

To

From

Bit

Run Number

Casing Record

Size

Wgt/Ft

Top

Bottom

Surface String

8-5/8

24.00 / J-55

SURFACE

Prot. String

4-1/2

11.60 / M-80

SURFACE

Production String

Liner

<<< Fold Here >>>

All interpretations are opinions based on inferences from electrical or other measurements and we cannot and do not guarantee the accuracy or correctness of any interpretation, and we shall not, except in the case of gross or willful negligence on our part, be liable or responsible for any loss, costs, damages, or expenses incurred or sustained by anyone resulting from any interpretation made by any of our officers, agents or employees. These interpretations are also subject to our general terms and conditions set out in our current Price Schedule.

Comments

THANK YOU FOR USING SUPERIOR WELL SERVICES.

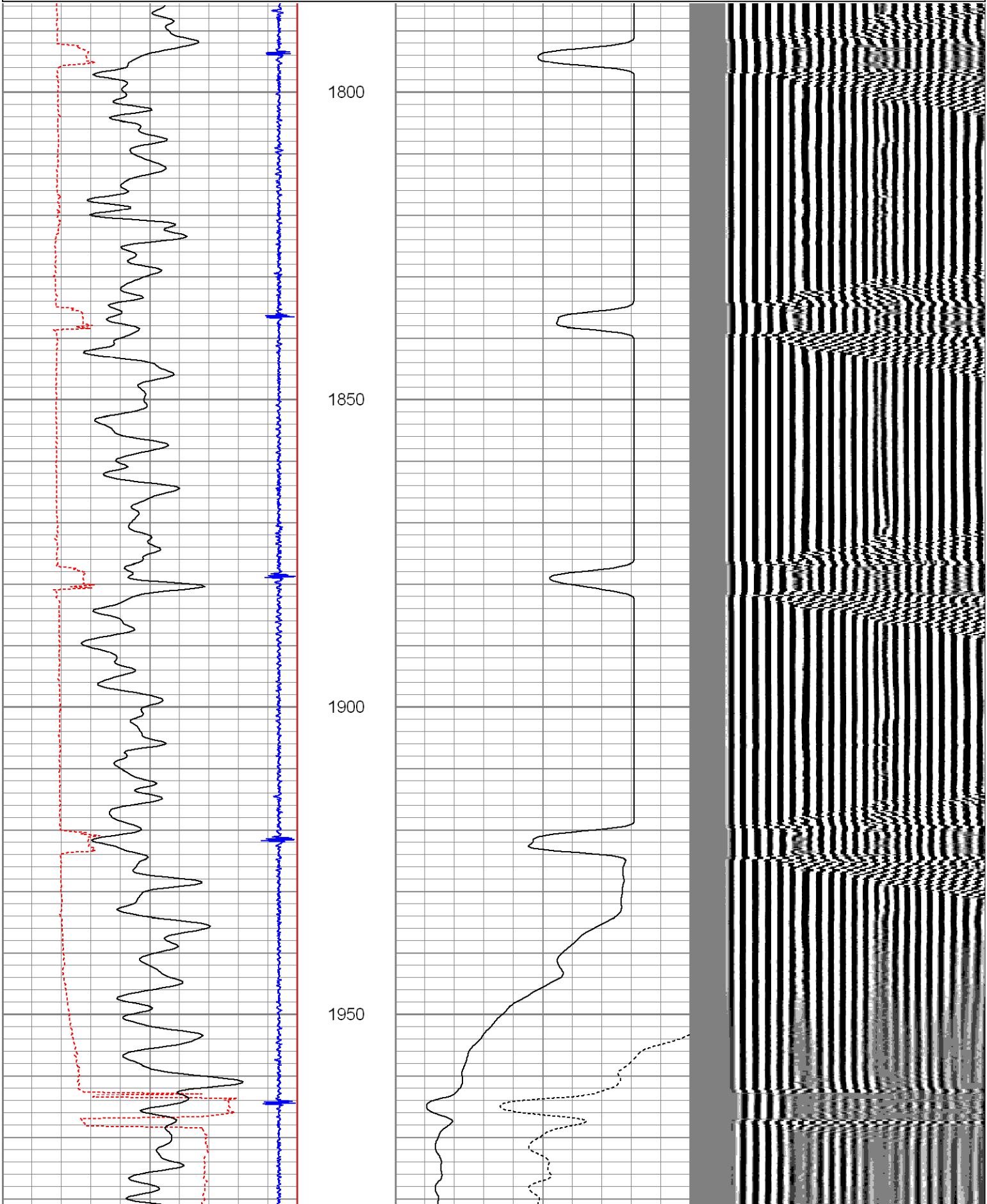
CORRECTED UP HOLE TO PSI MIRCOLOG DATED JUNE 20, 2010.

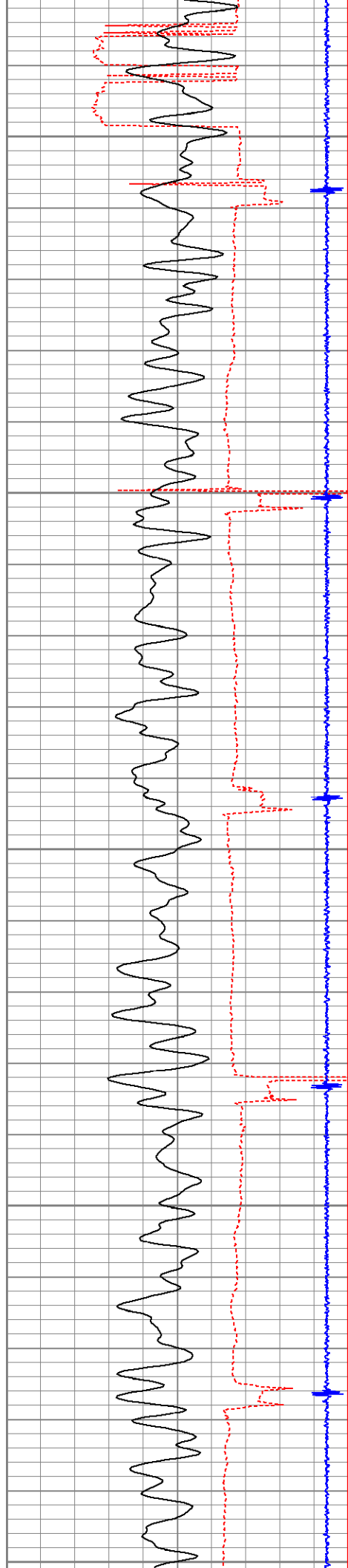
Database File: wlrnchae31-07pcbl.db
Dataset Pathname: pass4
Presentation Format: cbl01
Dataset Creation: Tue Jun 29 09:22:27 2010 by Log Open-Cased 071220
Charted by: Depth in Feet scaled 1:240

200	Travel Time (usec)	275
9	Collar Locator	-0.5
30	Gamma Ray (GAPI)	130
0	Line Speed (ft/min)	100

0	Amplified Amplitude (mV)	30
0	Amplitude (mV)	100

200 Variable Density 1200





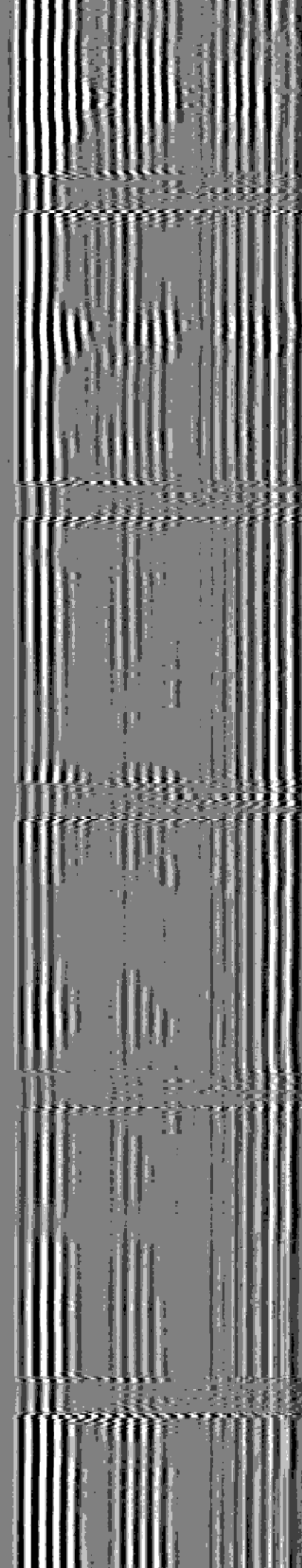
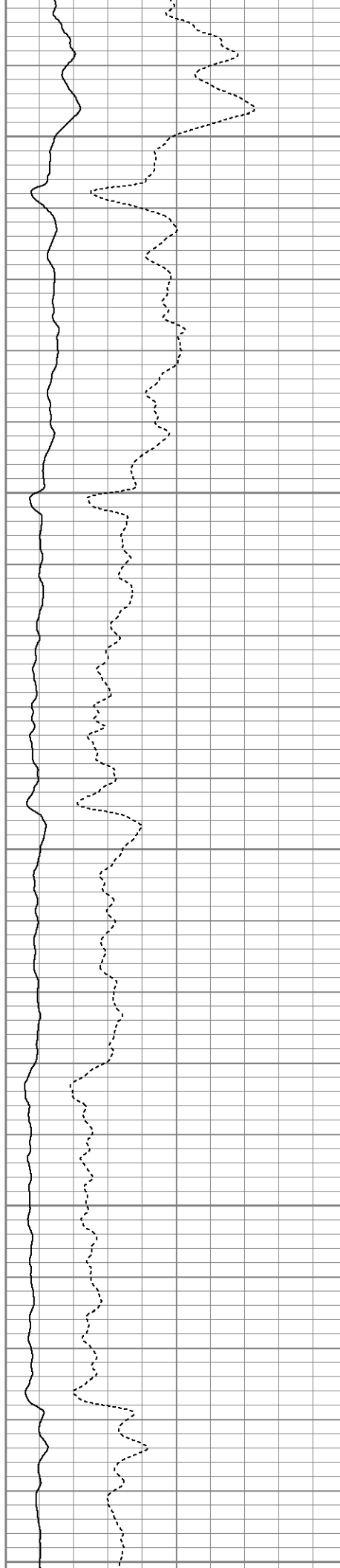
2000

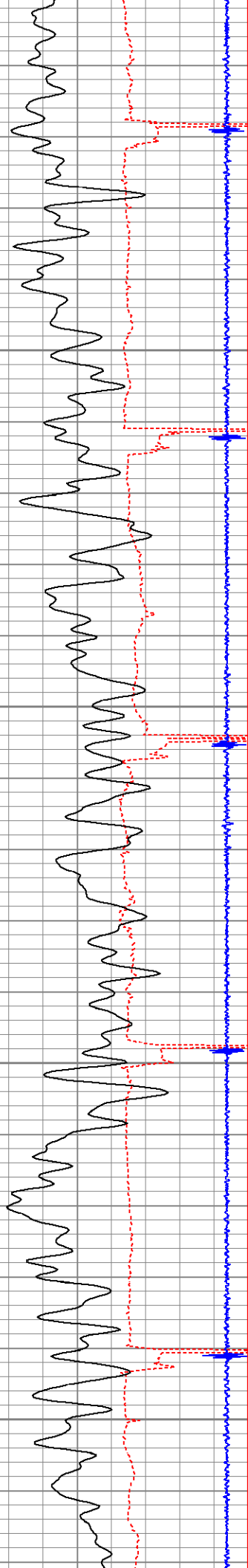
2050

2100

2150

2200



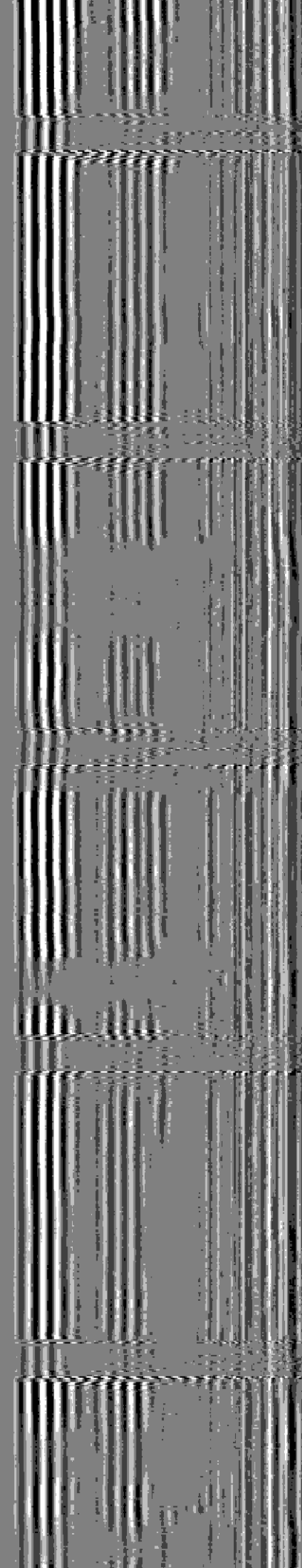
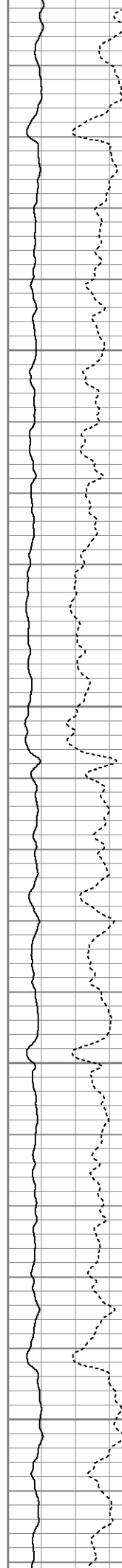


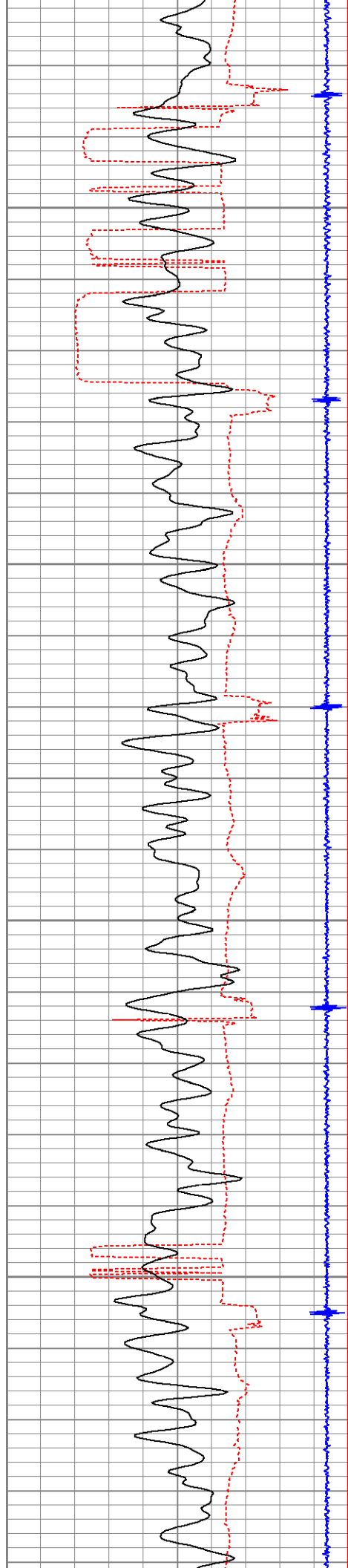
2250

2300

2350

2400



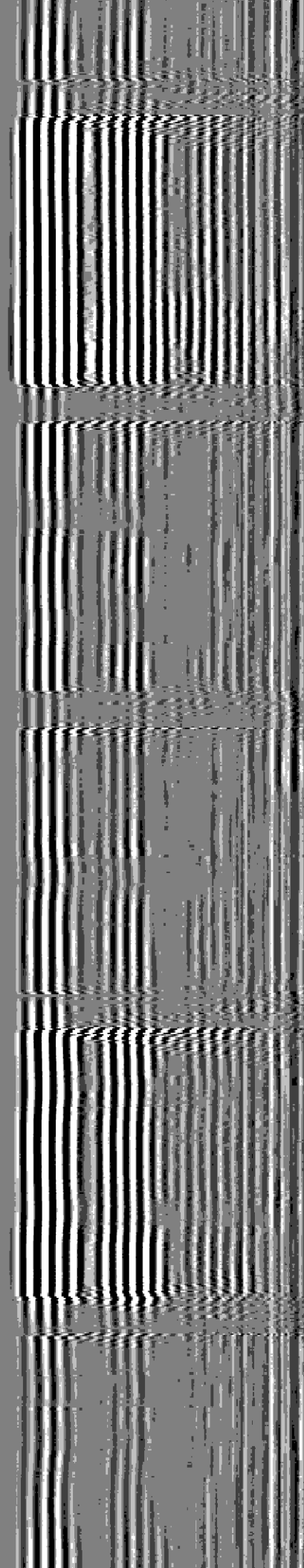
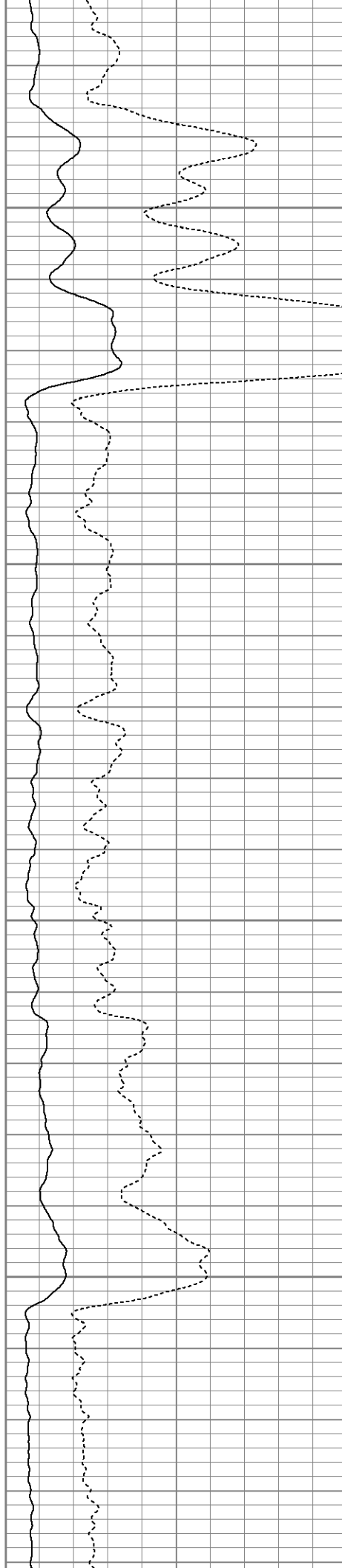


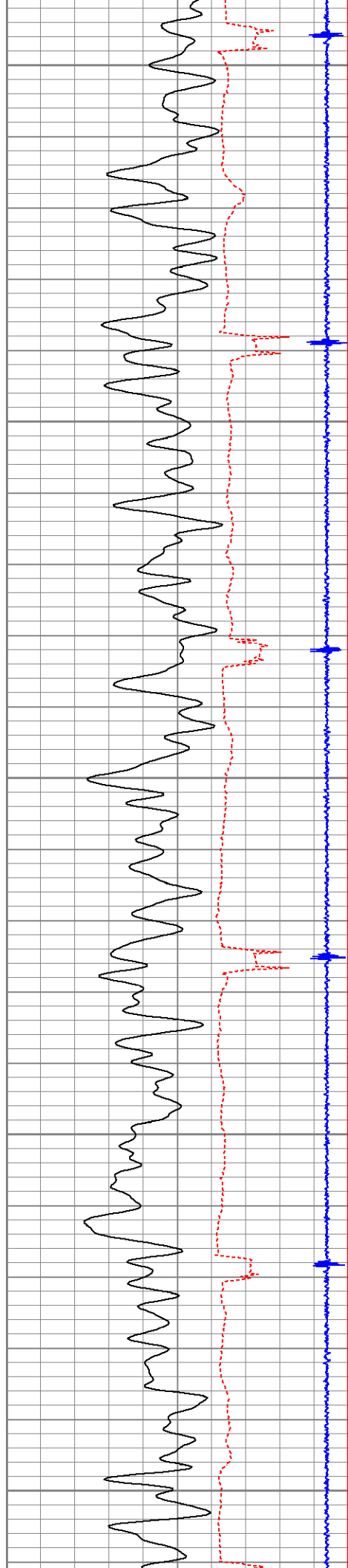
2450

2500

2550

2600





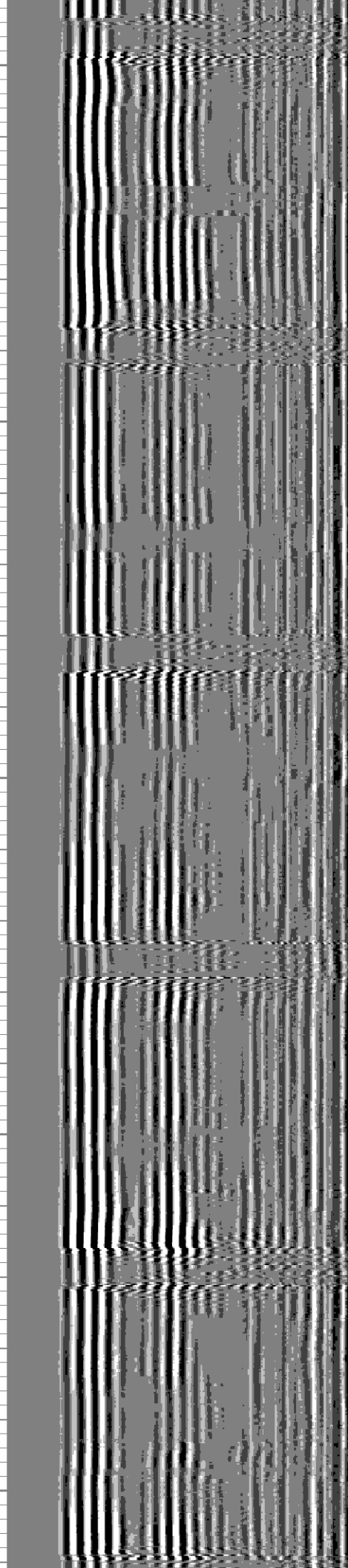
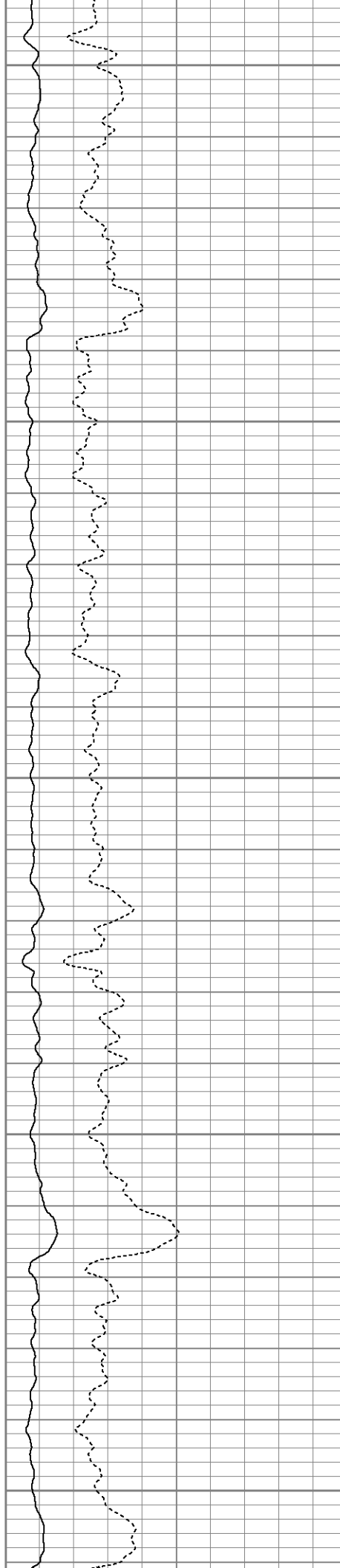
2650

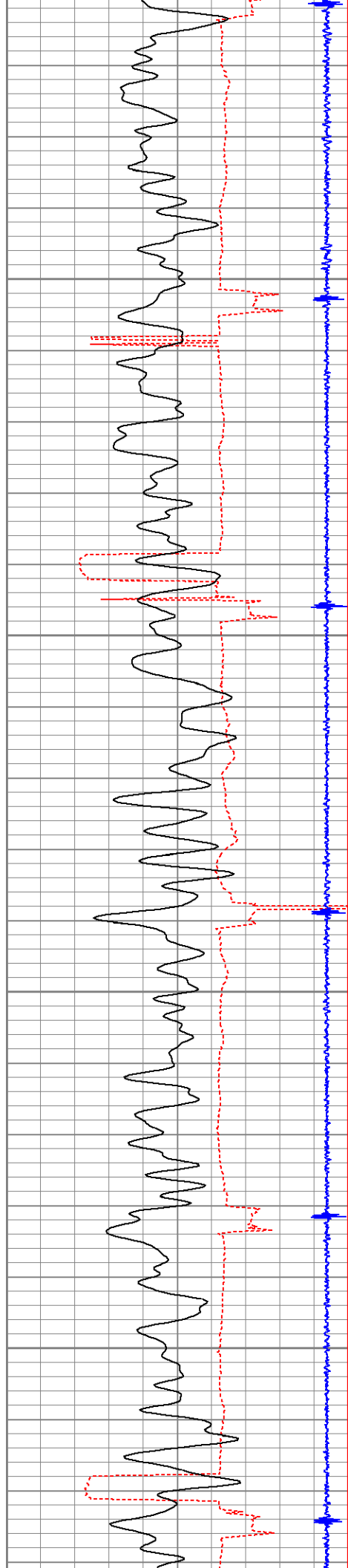
2700

2750

2800

2850



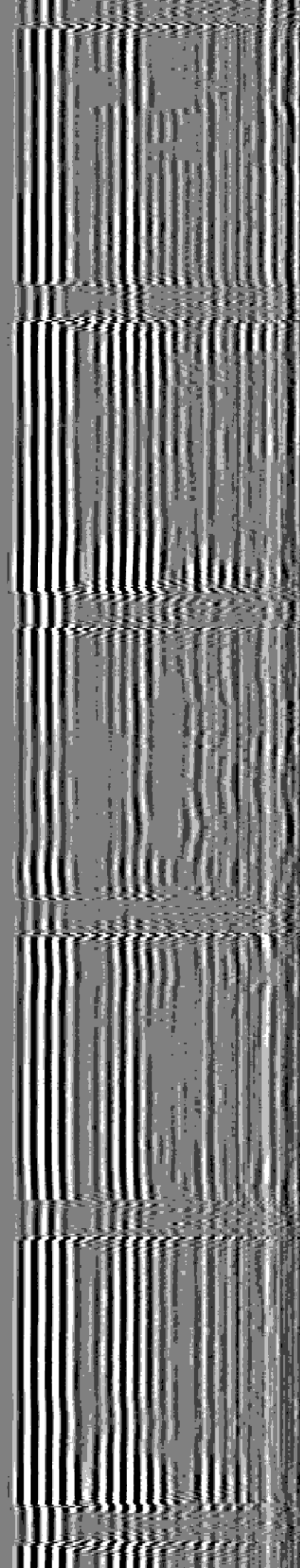
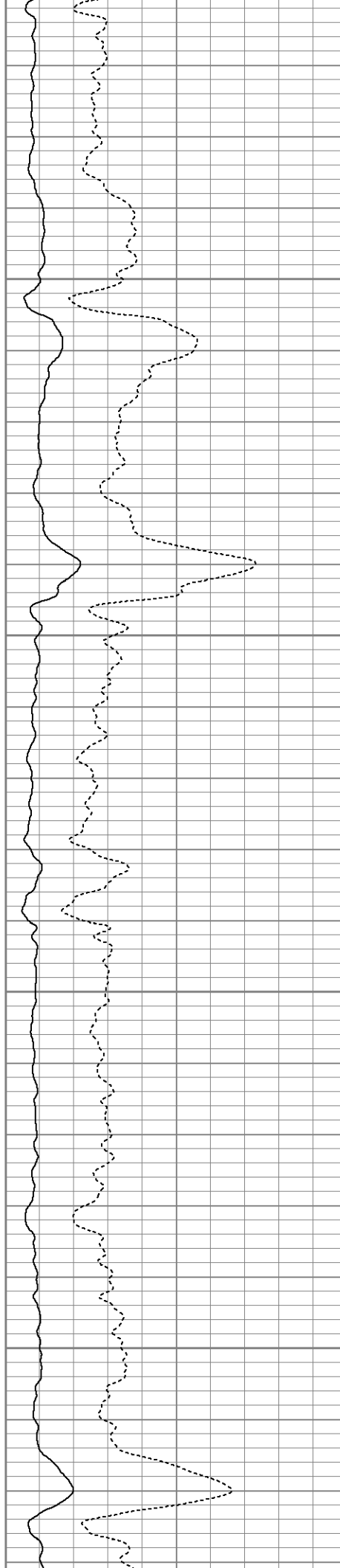


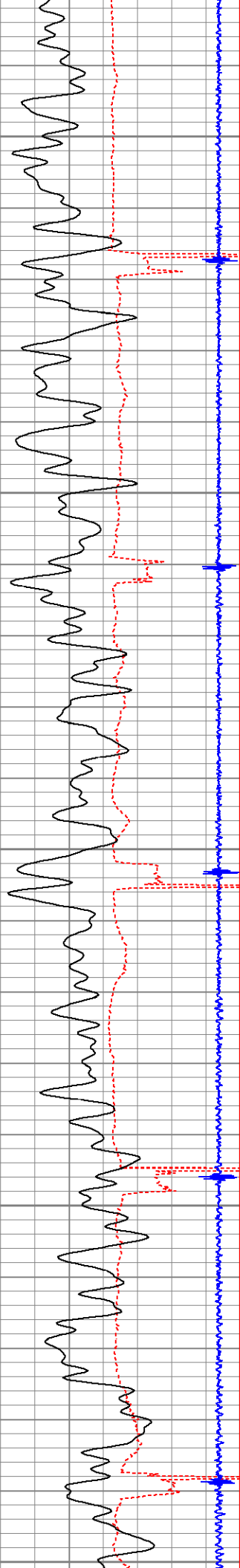
2900

2950

3000

3050





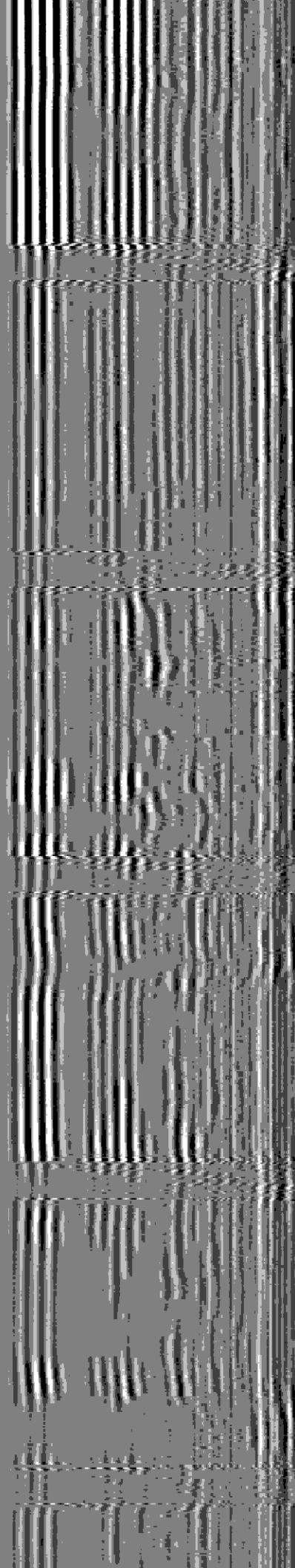
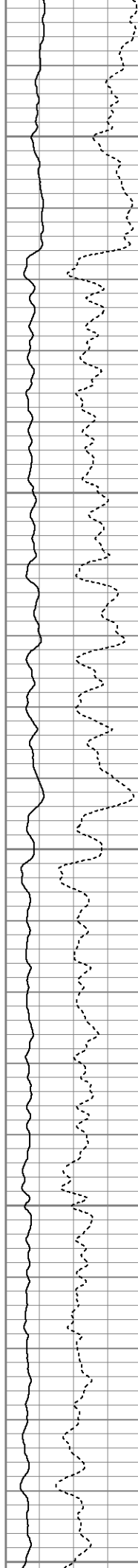
3100

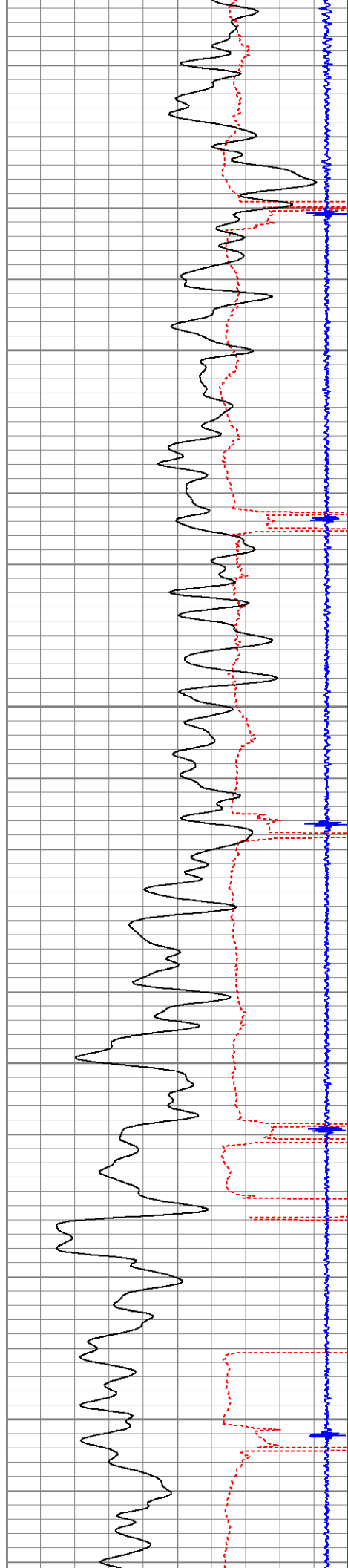
3150

3200

3250

3300



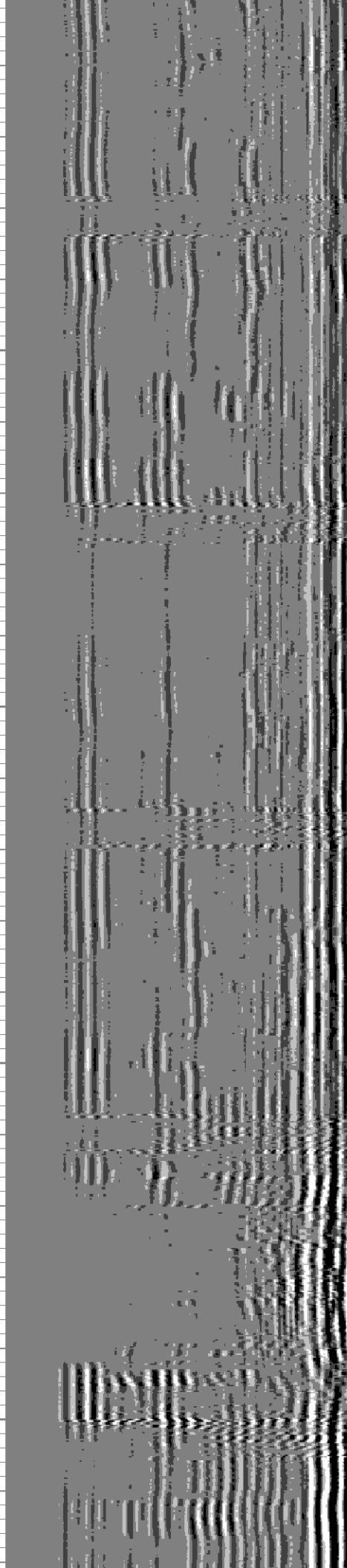
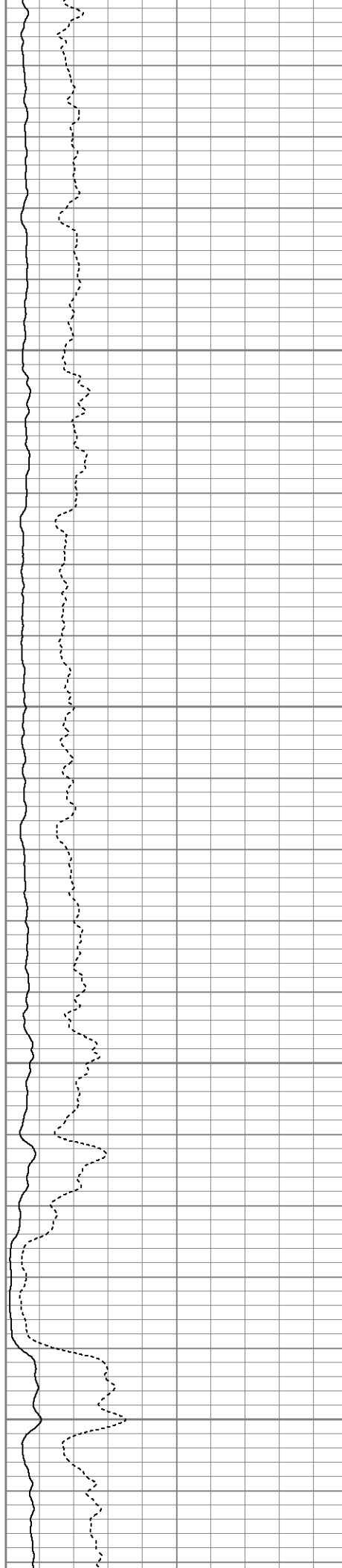


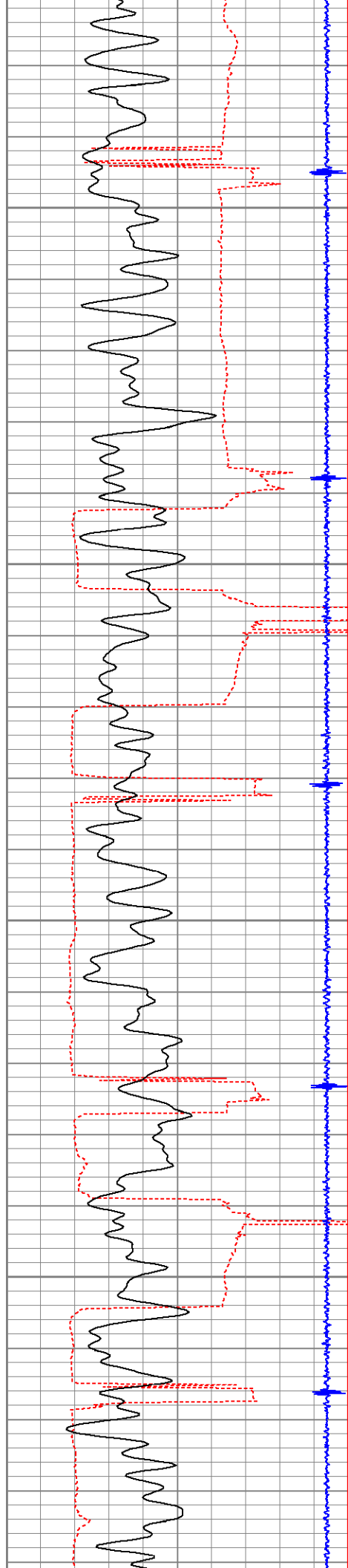
3350

3400

3450

3500



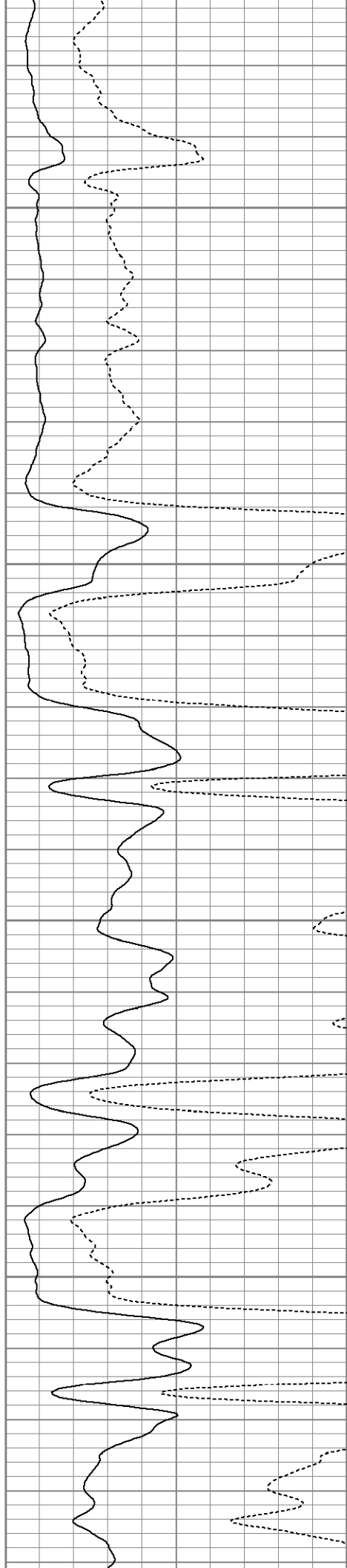


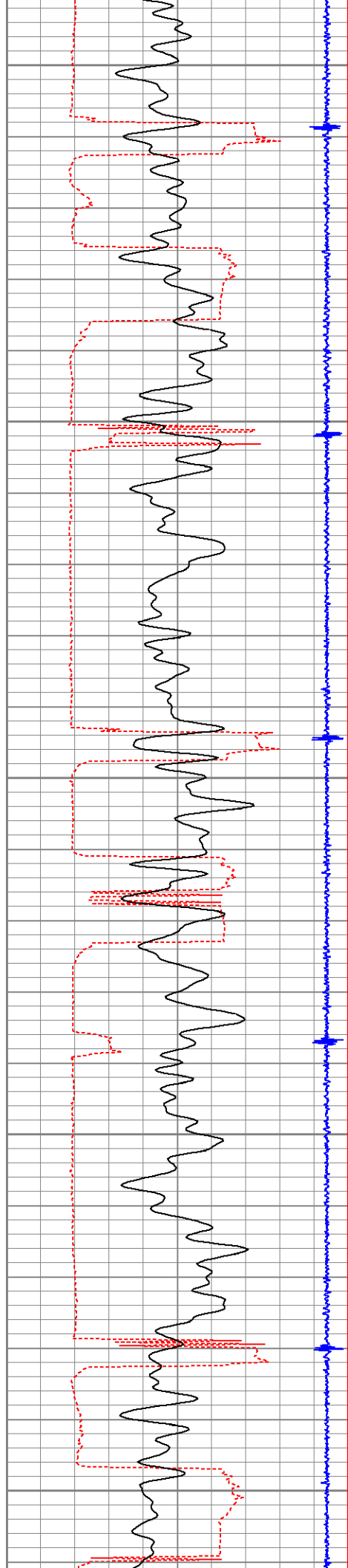
3550

3600

3650

3700





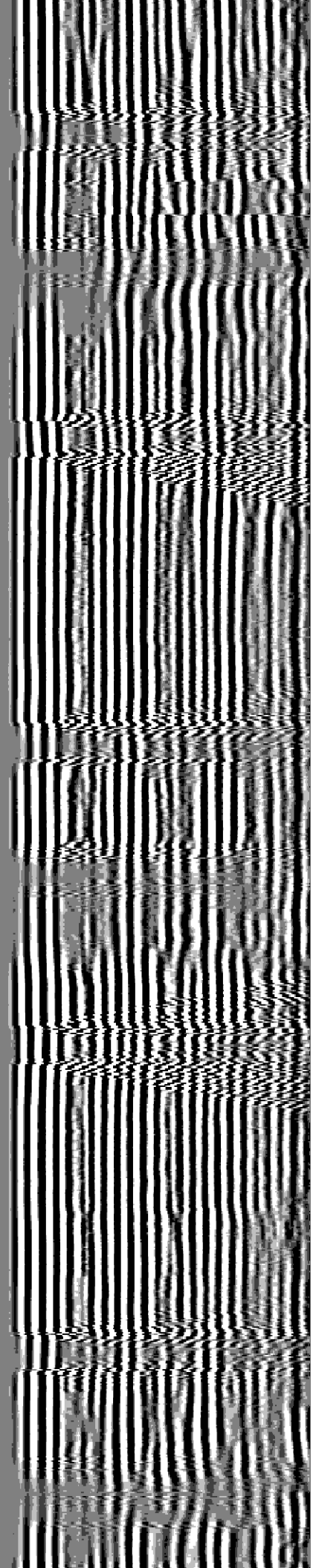
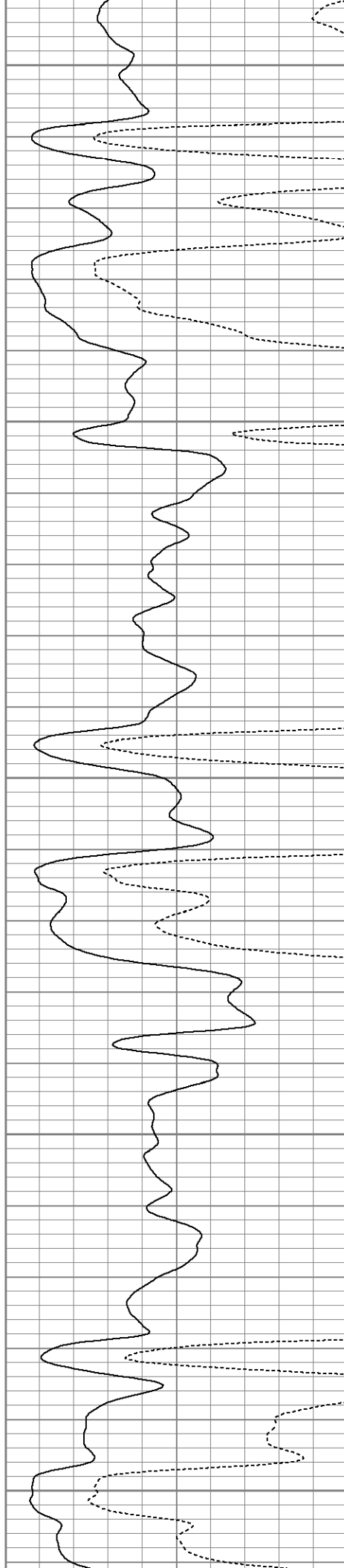
3750

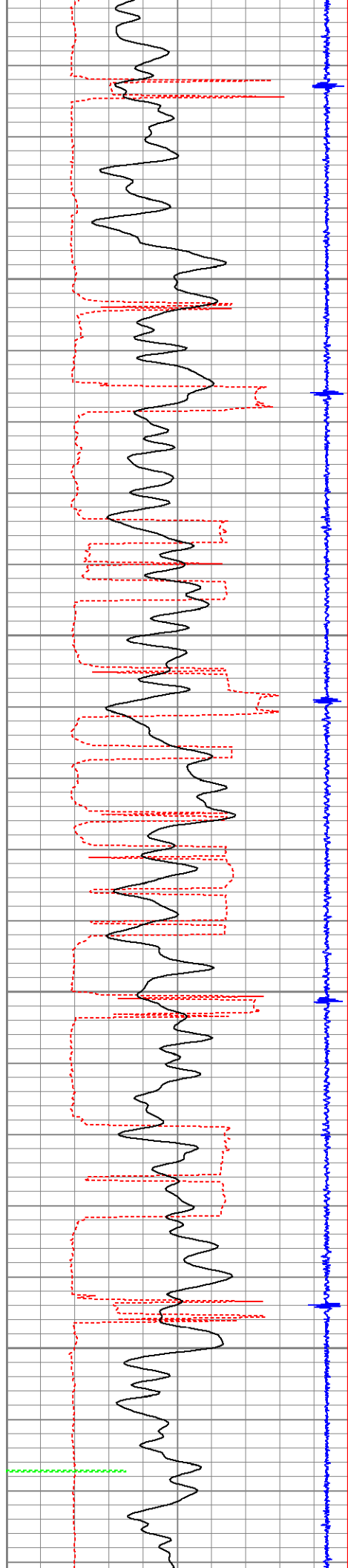
3800

3850

3900

3950



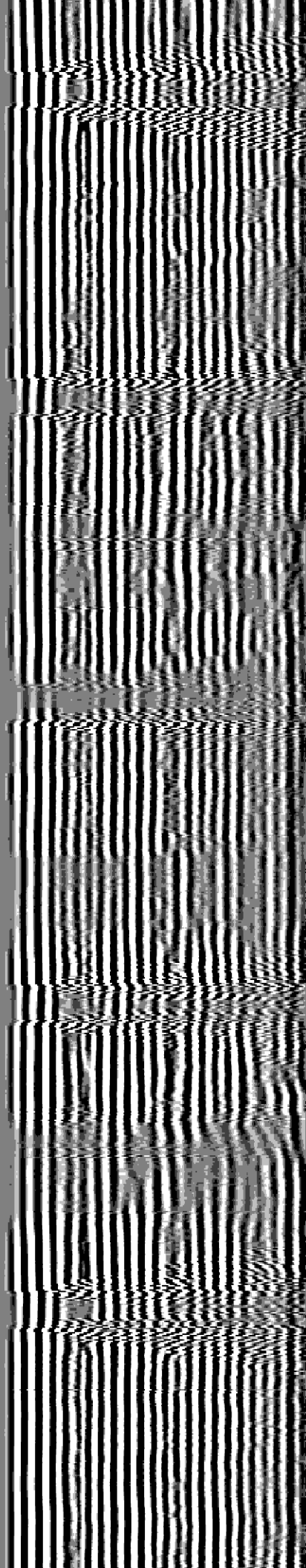
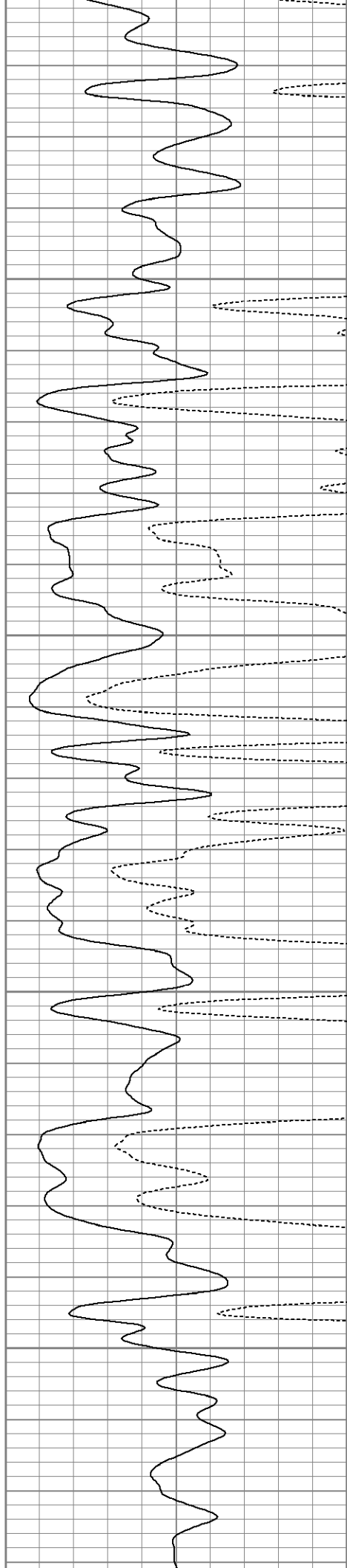


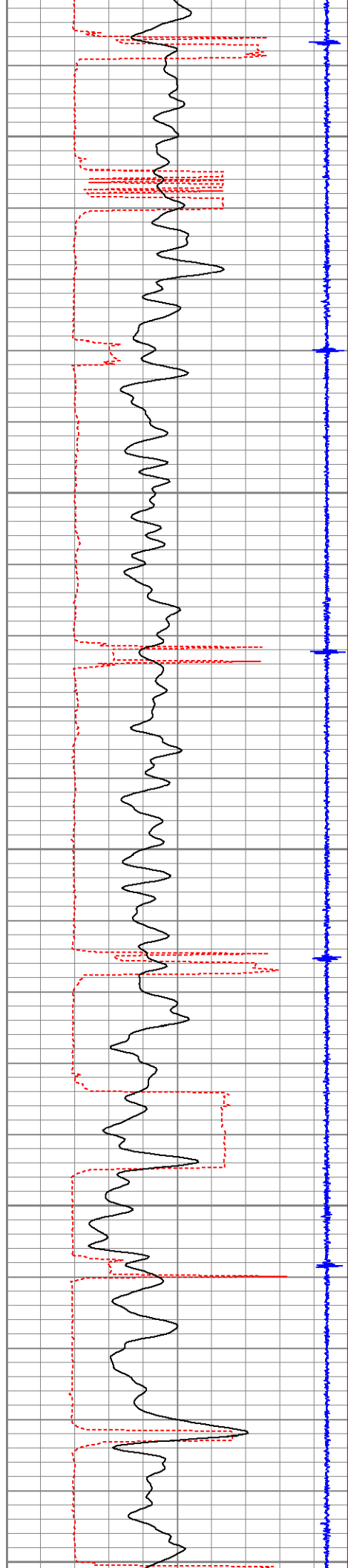
4000

4050

4100

4150





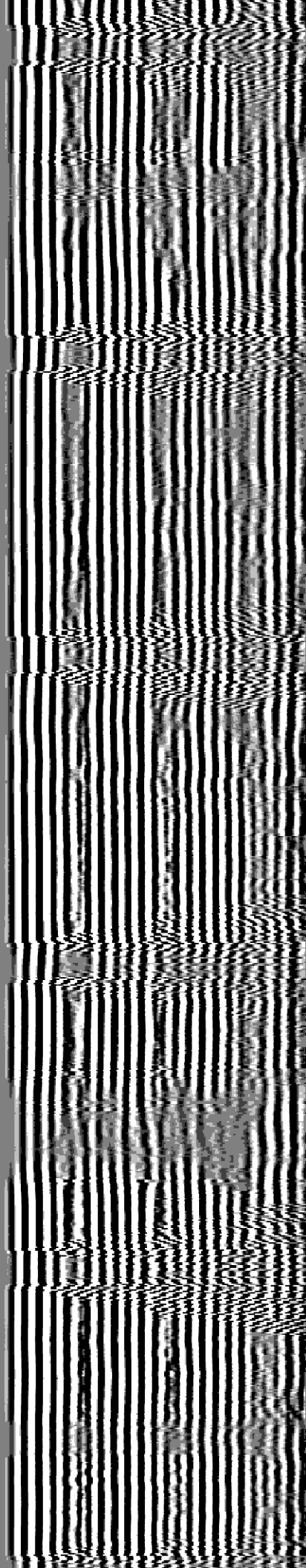
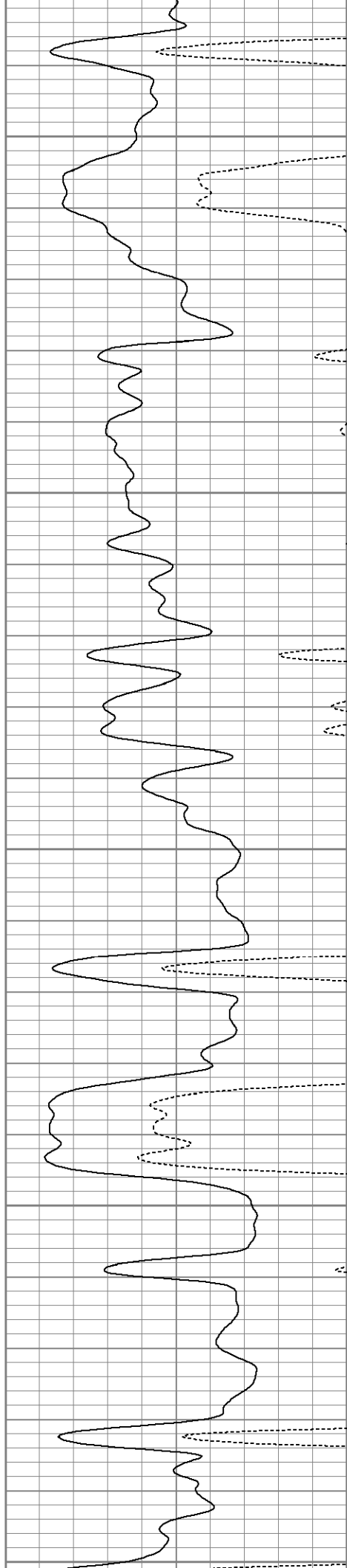
4200

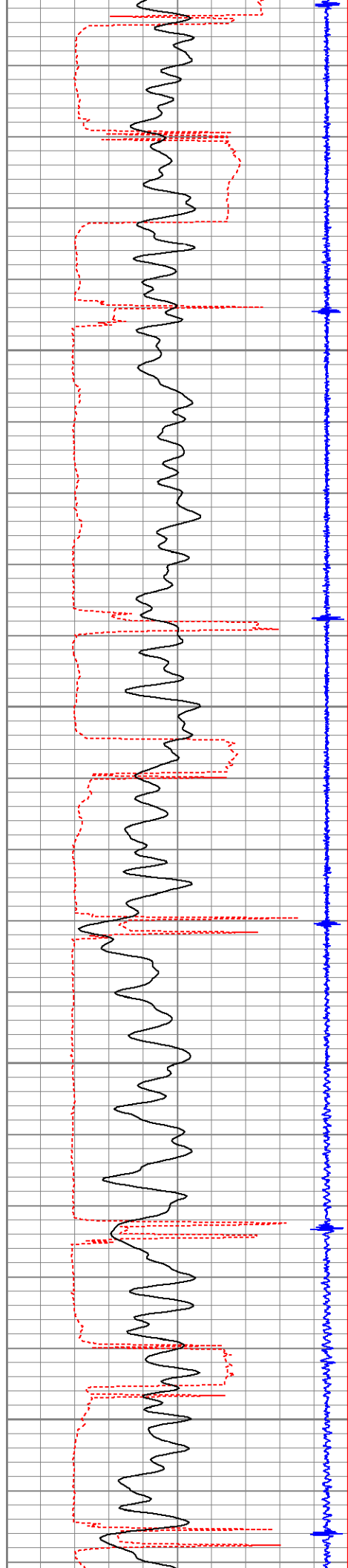
4250

4300

4350

4400



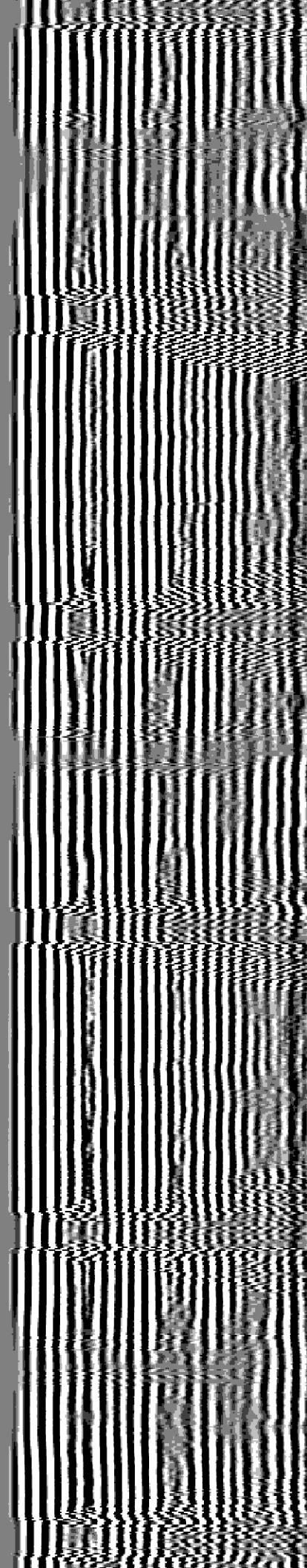
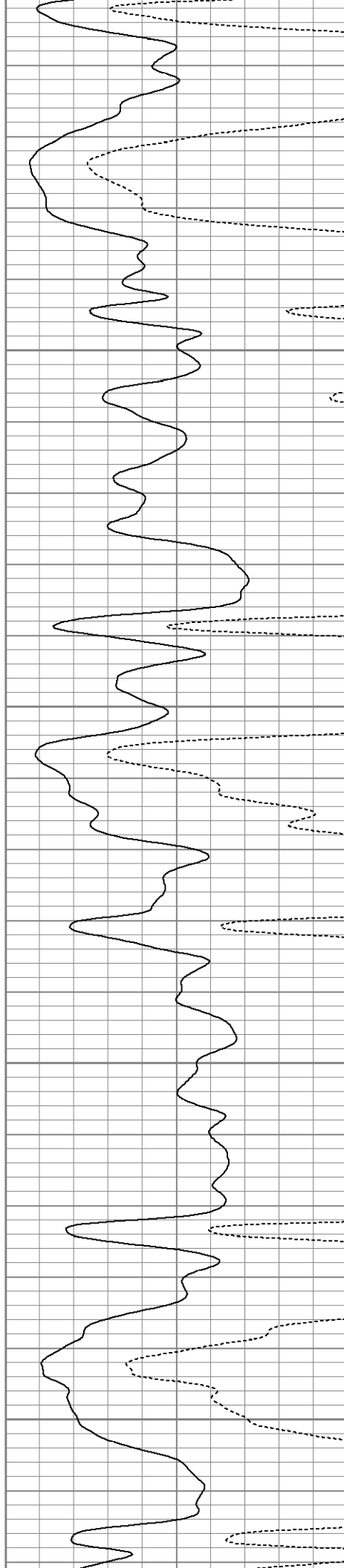


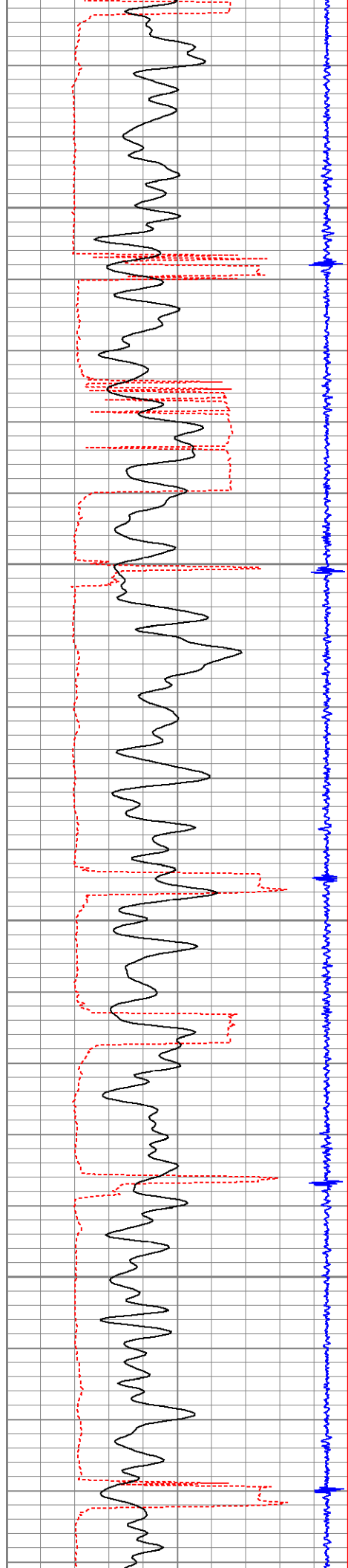
4450

4500

4550

4600



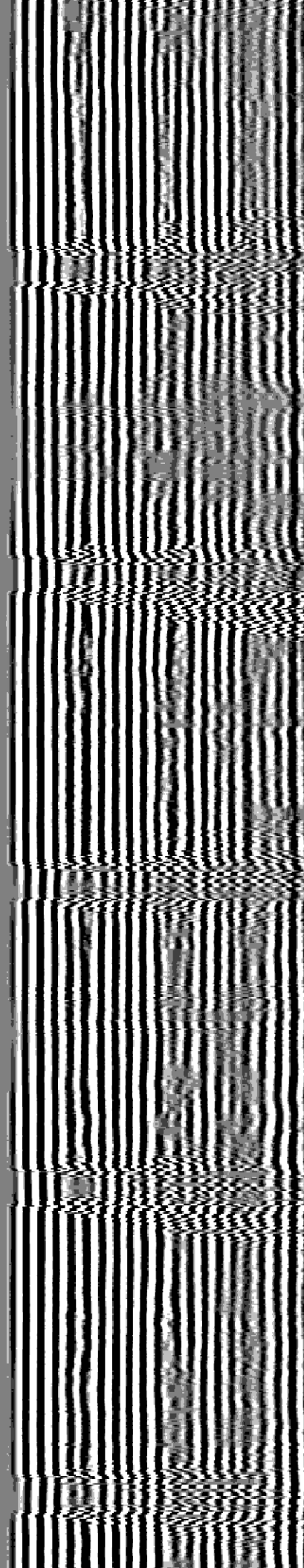
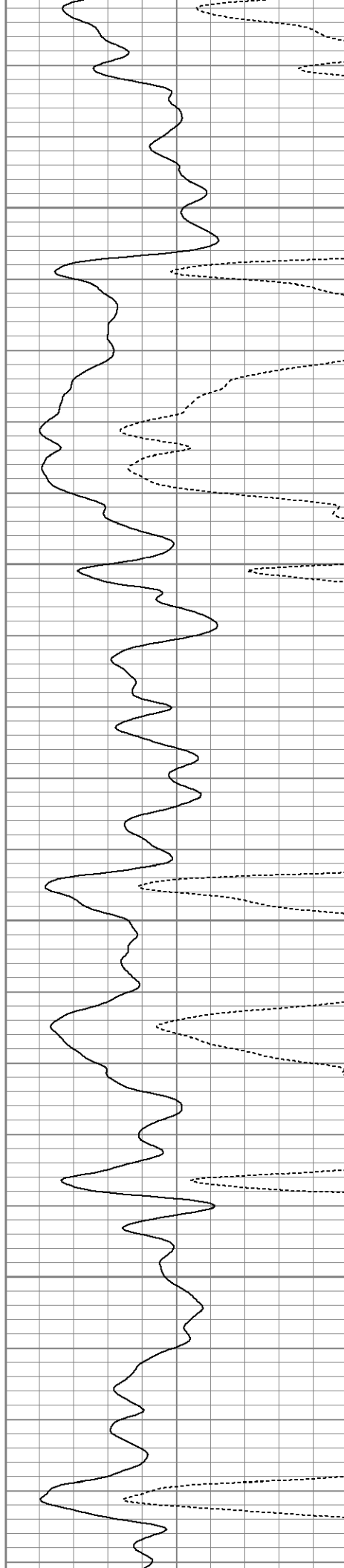


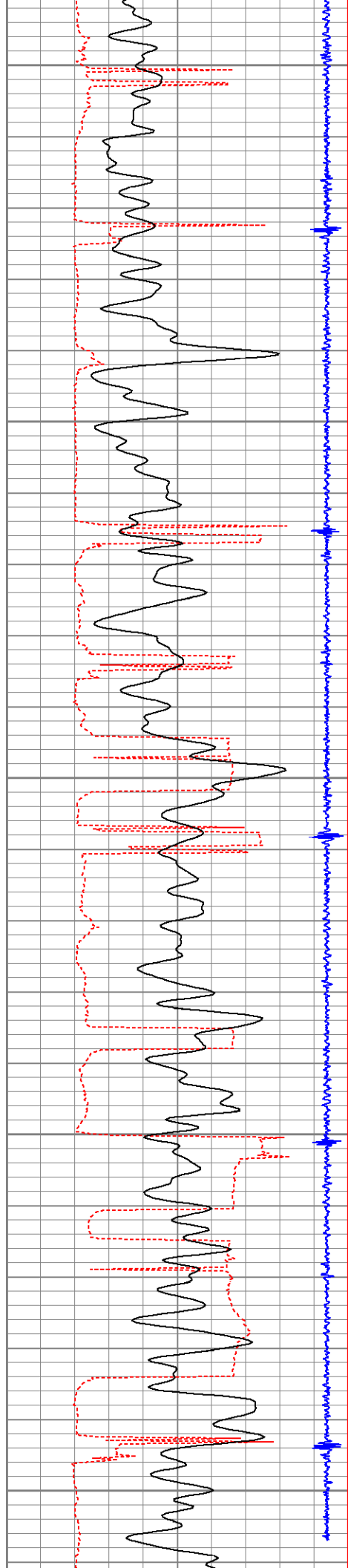
4650

4700

4750

4800





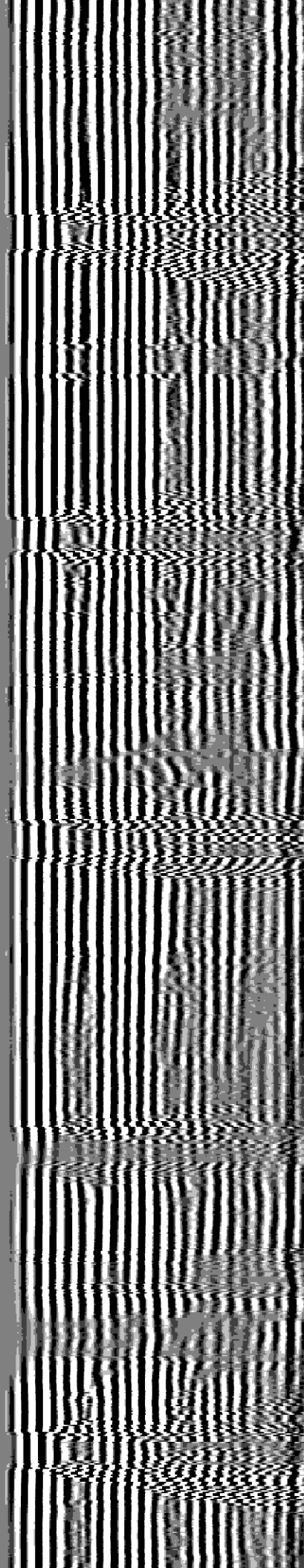
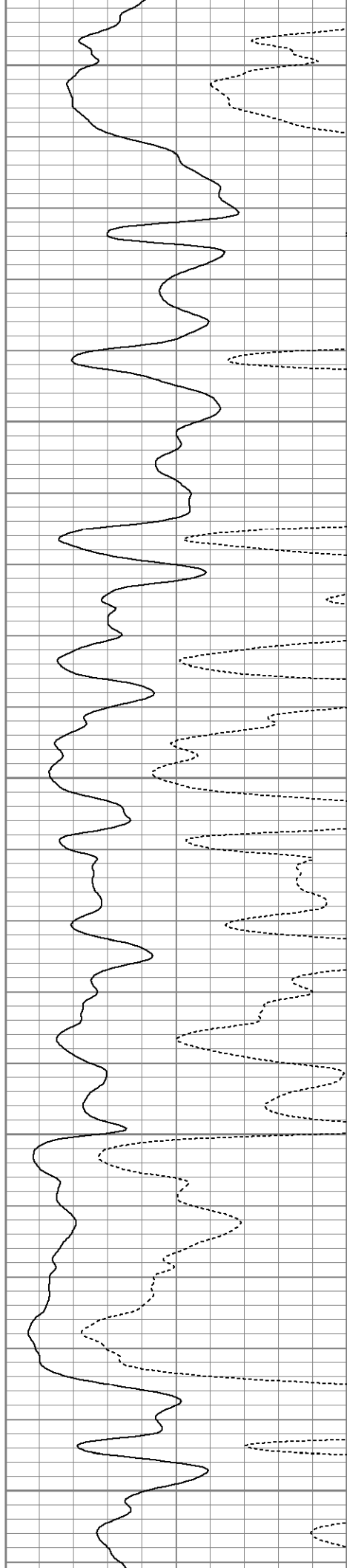
4850

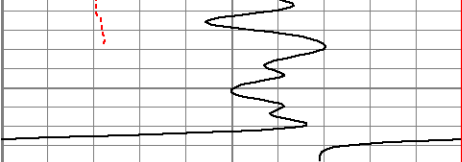
4900

4950

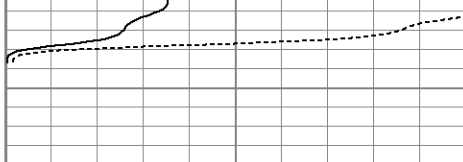
5000

5050





200	Travel Time (usec)	275
9	Collar Locator	-0.5
30	Gamma Ray (GAPI)	130
0	Line Speed (ft/min)	100



0	Amplified Amplitude (mV)	30
0	Amplitude (mV)	100



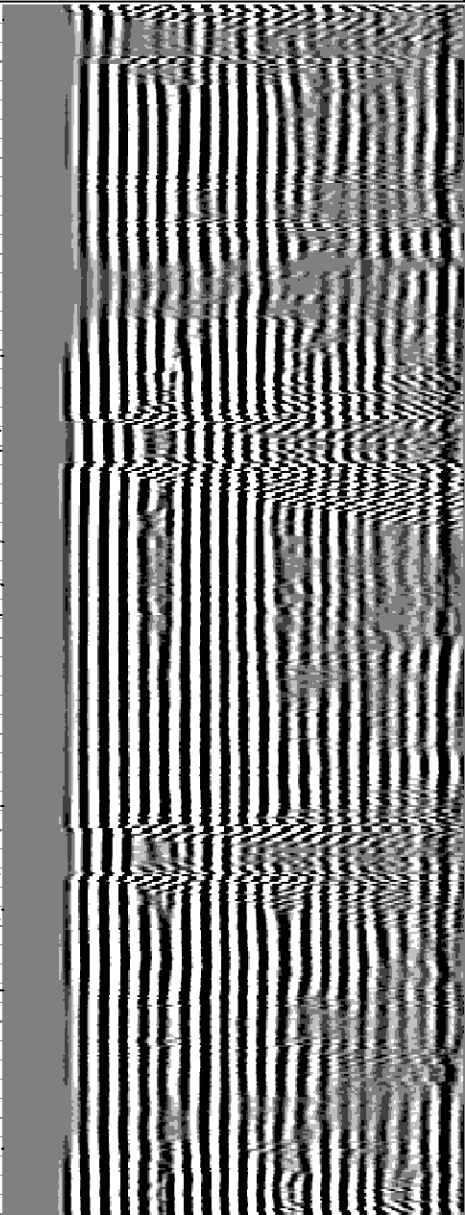
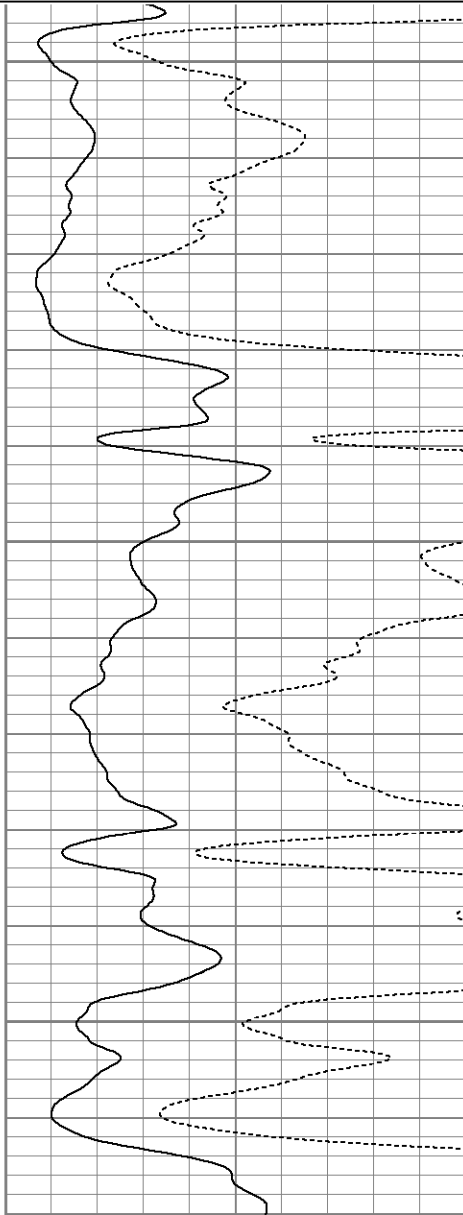
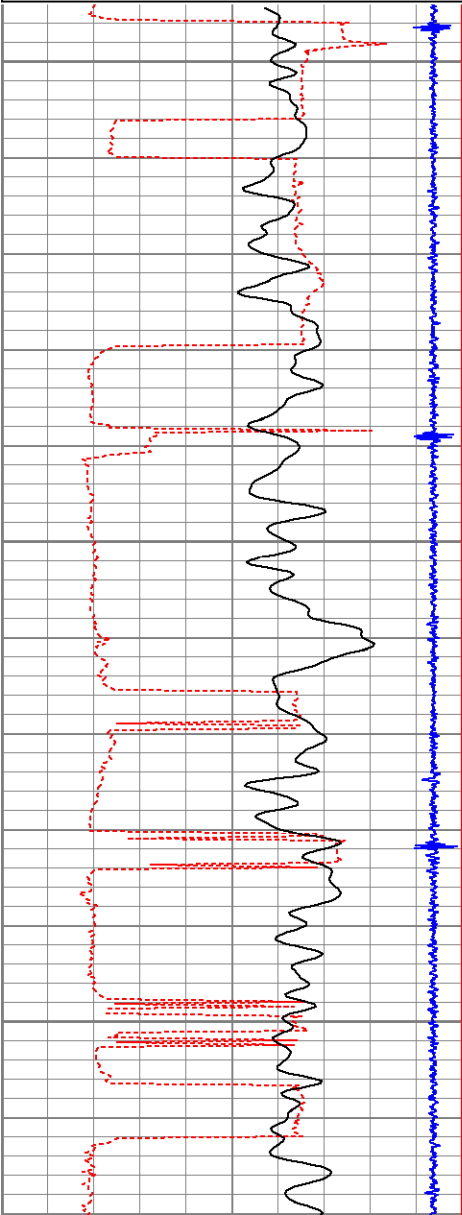
200	Variable Density	1200
-----	------------------	------

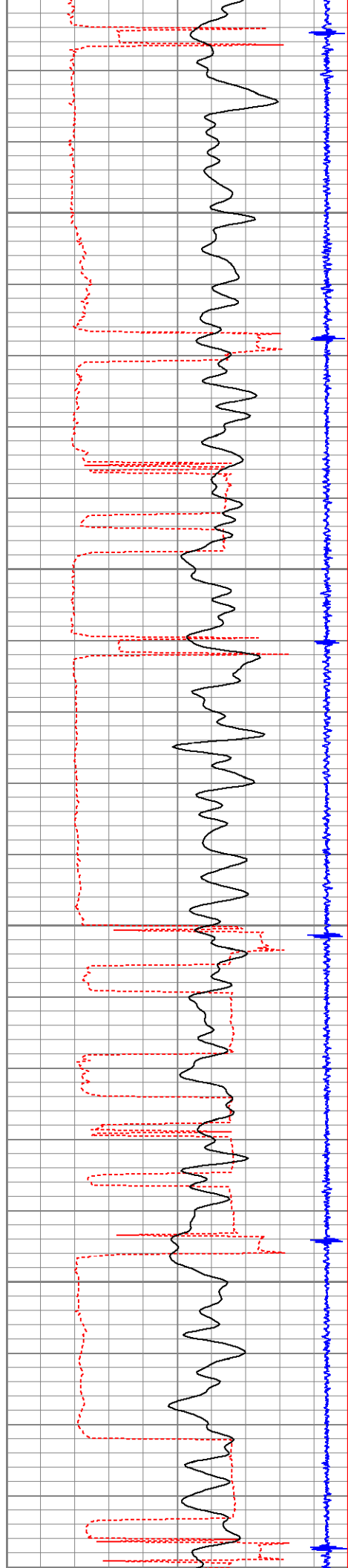
Database File: wlrnchae31-07pcbl.db
Dataset Pathname: pass3
Presentation Format: cbl01
Dataset Creation: Tue Jun 29 08:53:00 2010 by Log Open-Cased 071220
Charted by: Depth in Feet scaled 1:240

200	Travel Time (usec)	275
9	Collar Locator	-0.5
0	Gamma Ray (GAPI)	200
0	Line Speed (ft/min)	100

0	Amplified Amplitude (mV)	30
0	Amplitude (mV)	100

200	Variable Density	1200
-----	------------------	------



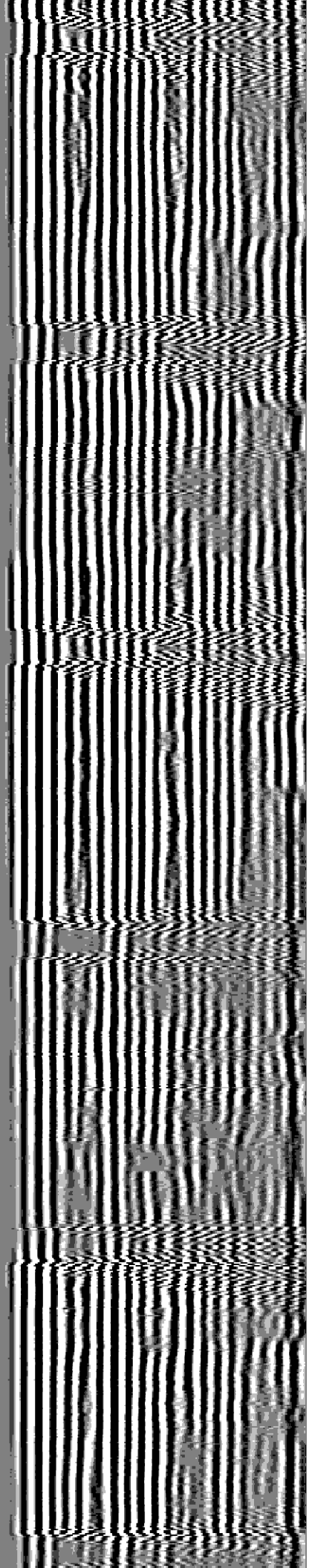
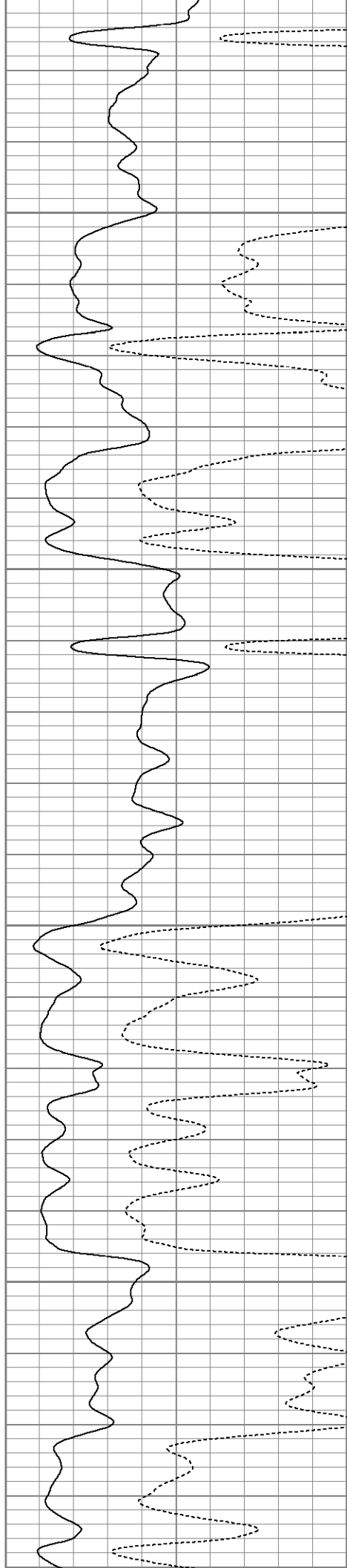


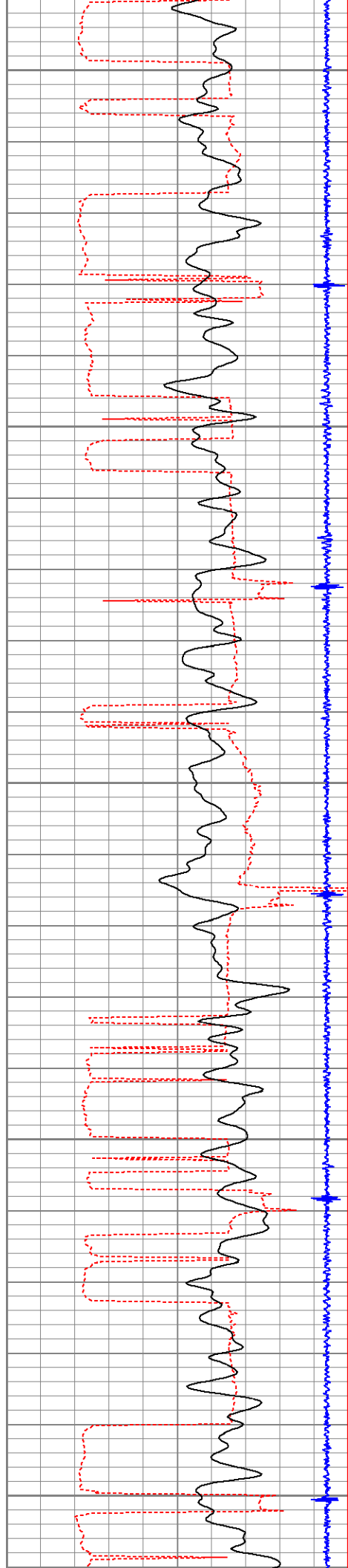
5150

5200

5250

5300





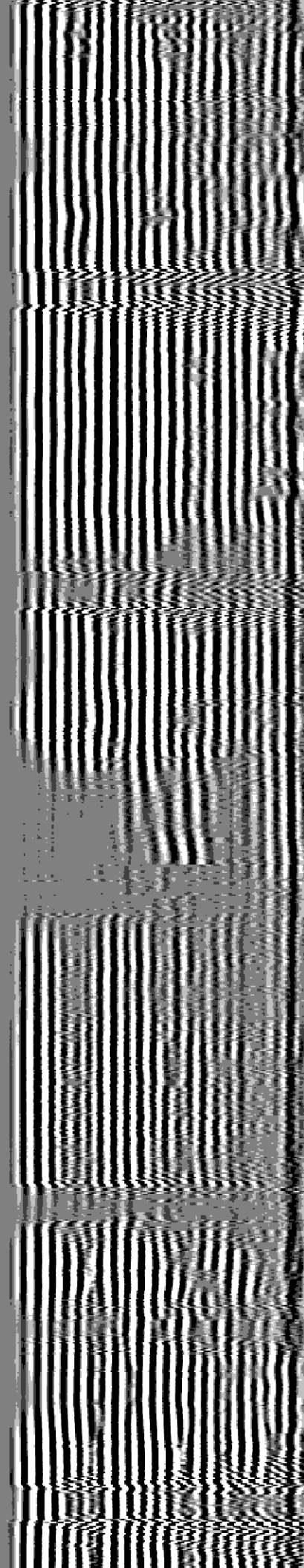
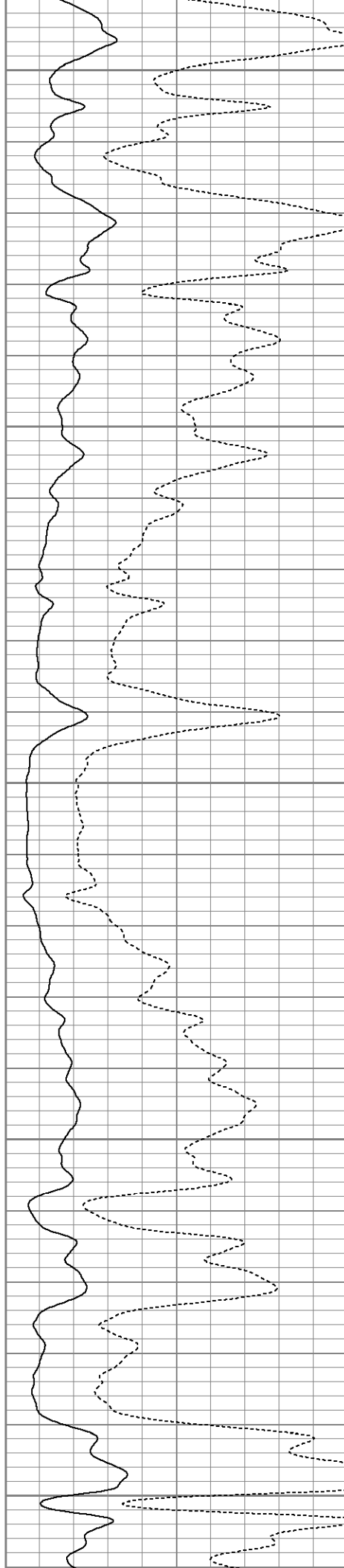
5350

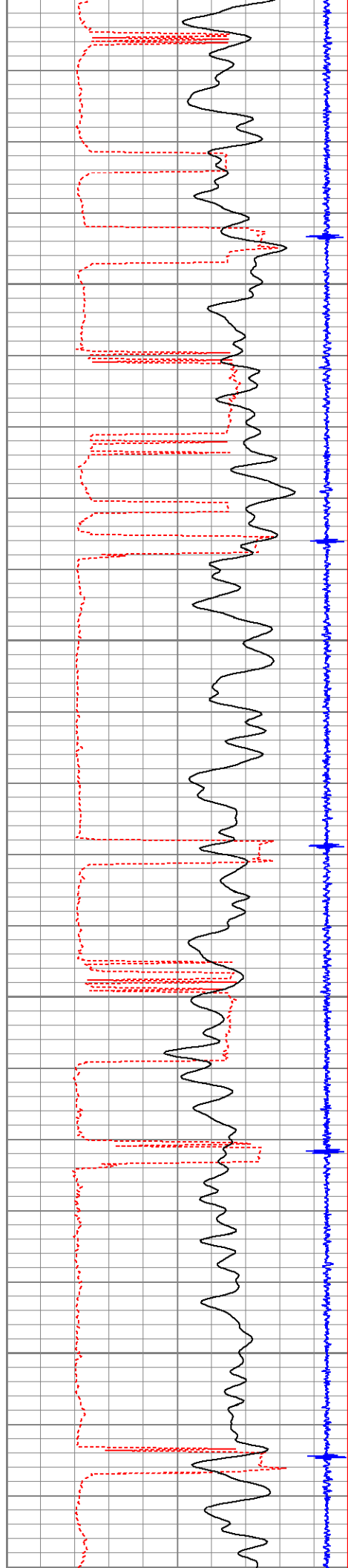
5400

5450

5500

5550



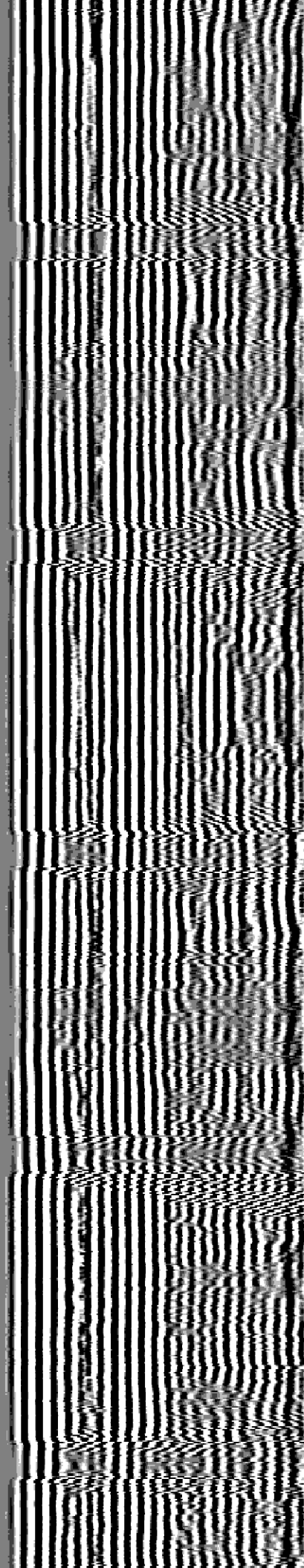
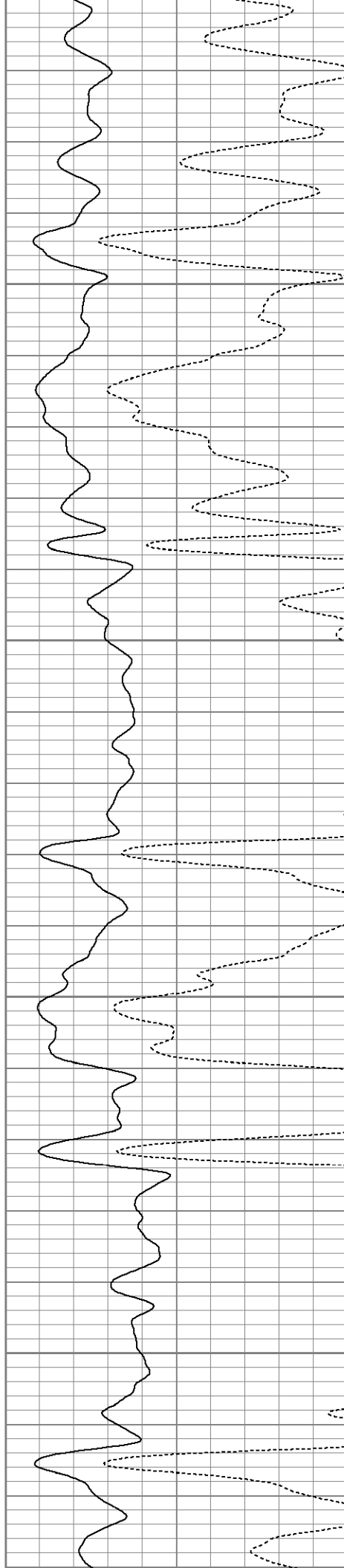


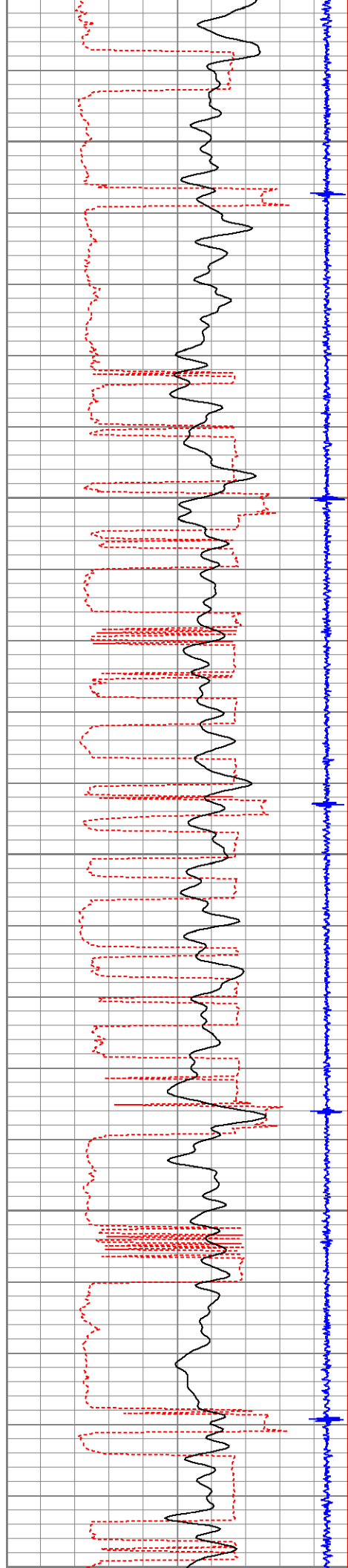
5600

5650

5700

5750





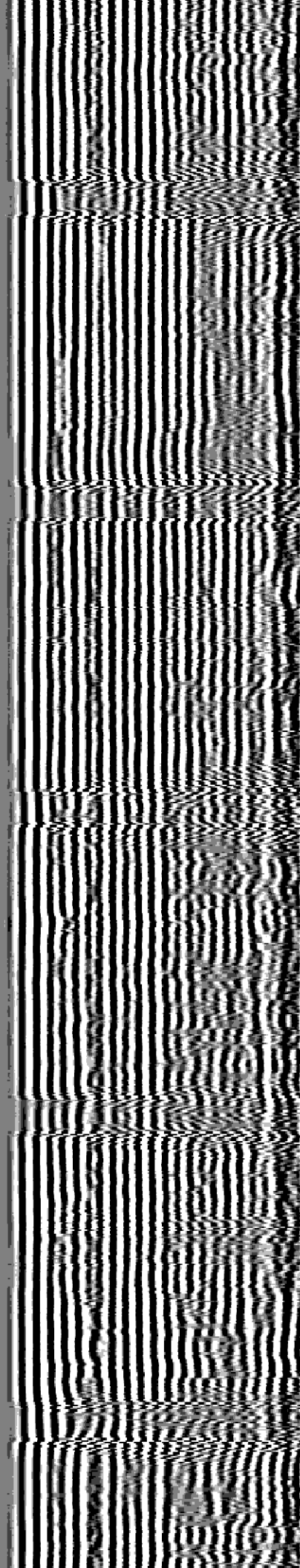
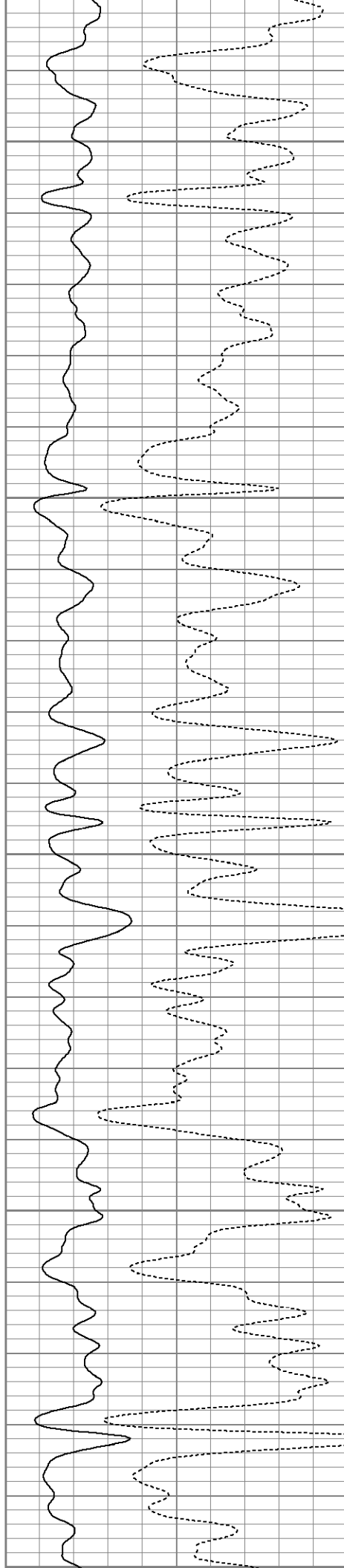
5800

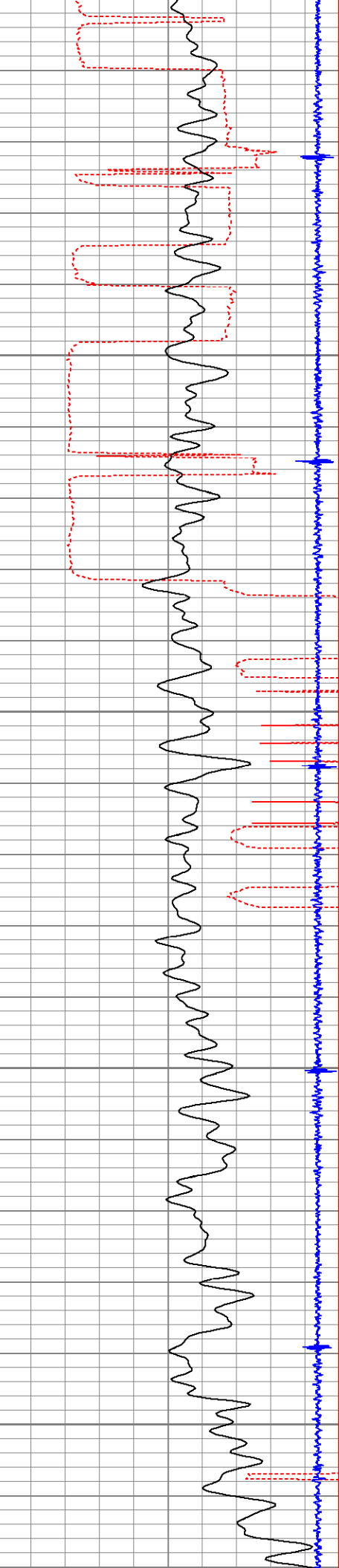
5850

5900

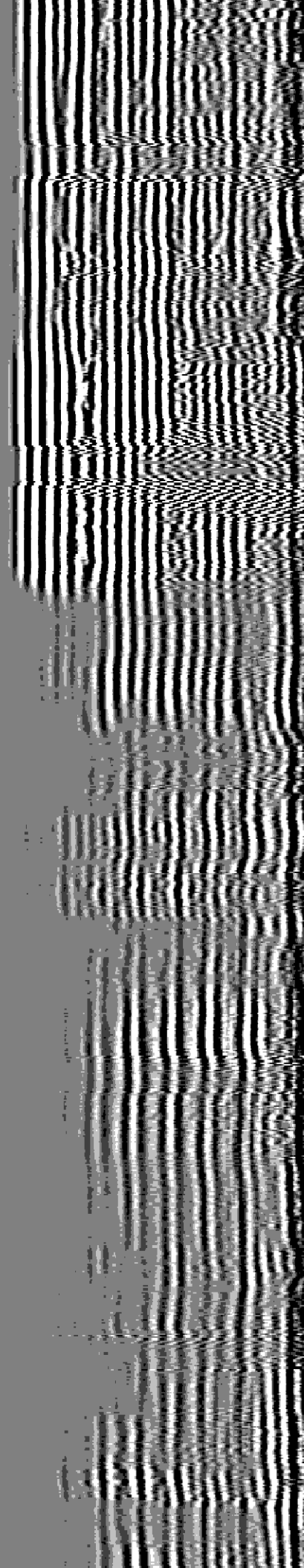
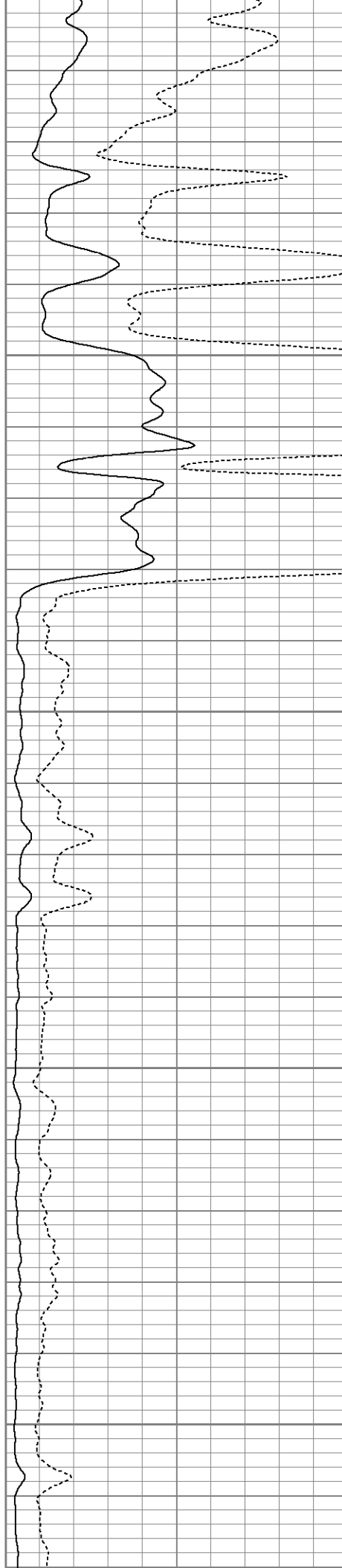
5950

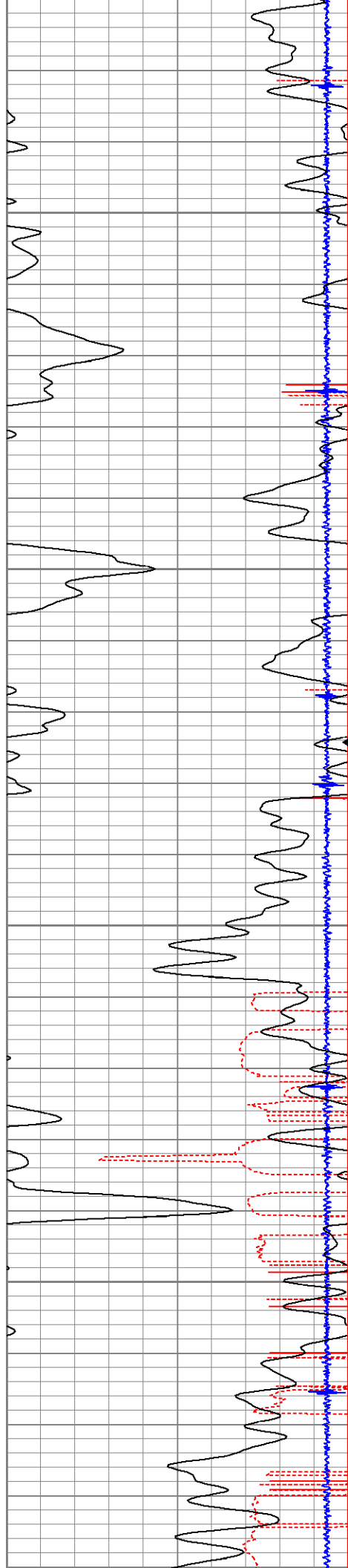
6000





6000
6050
6100
6150
6200





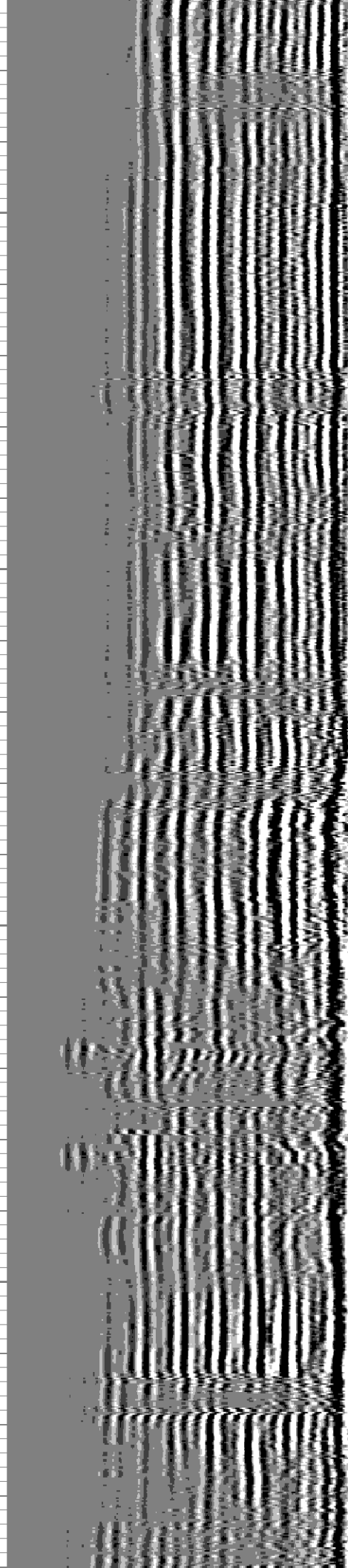
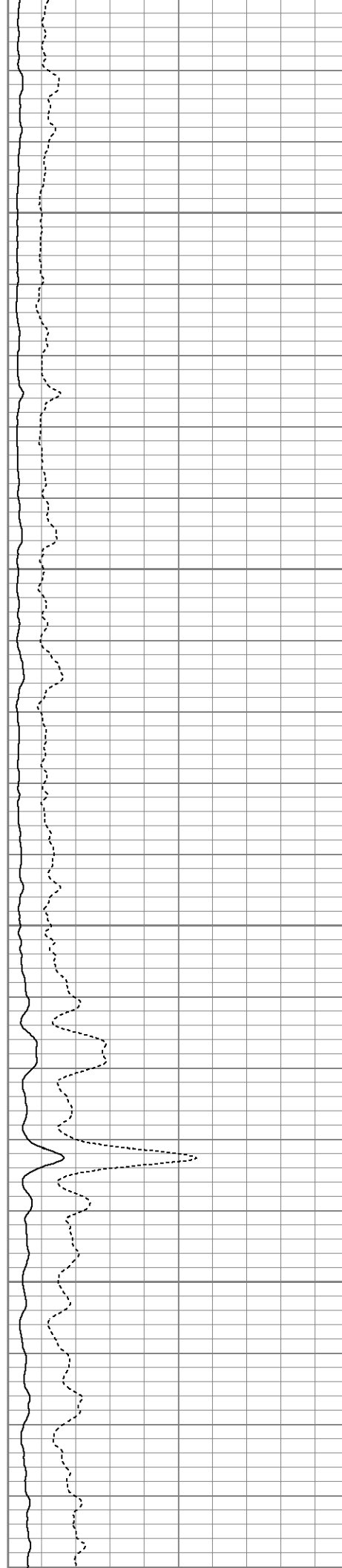
6250

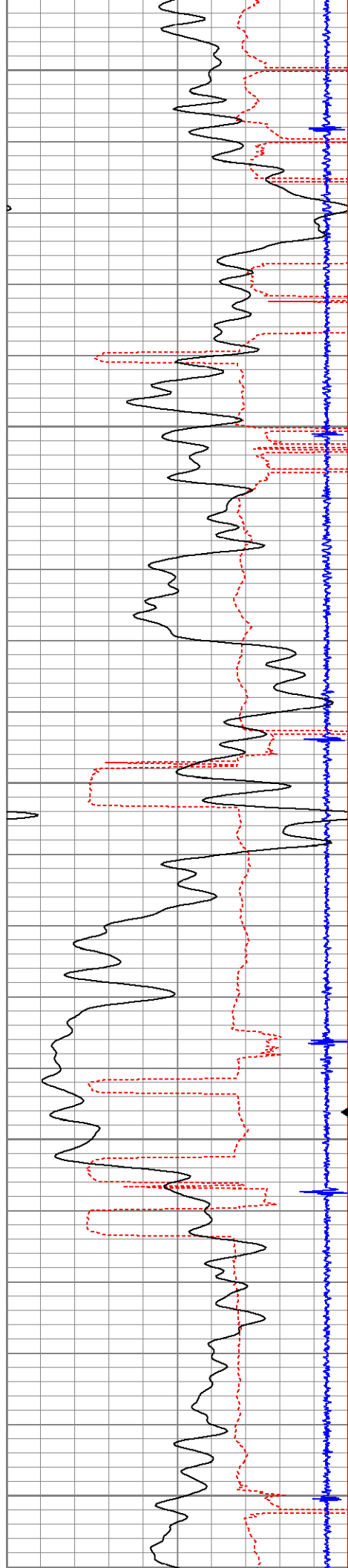
6300

6350

6400

FLAG





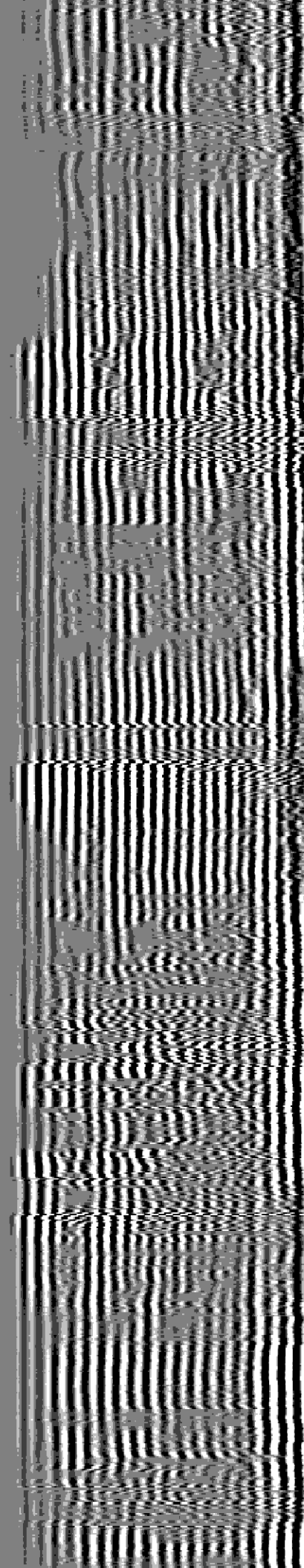
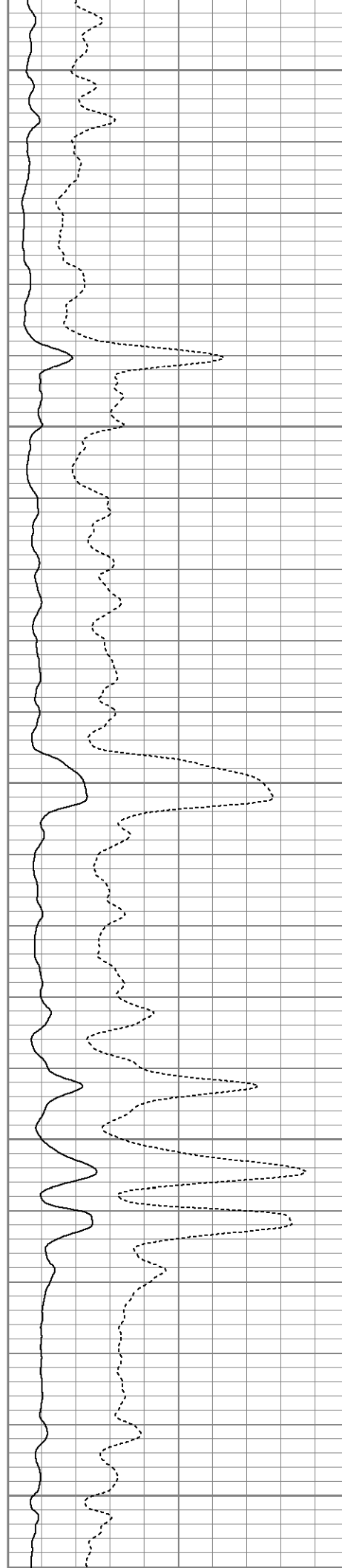
6450

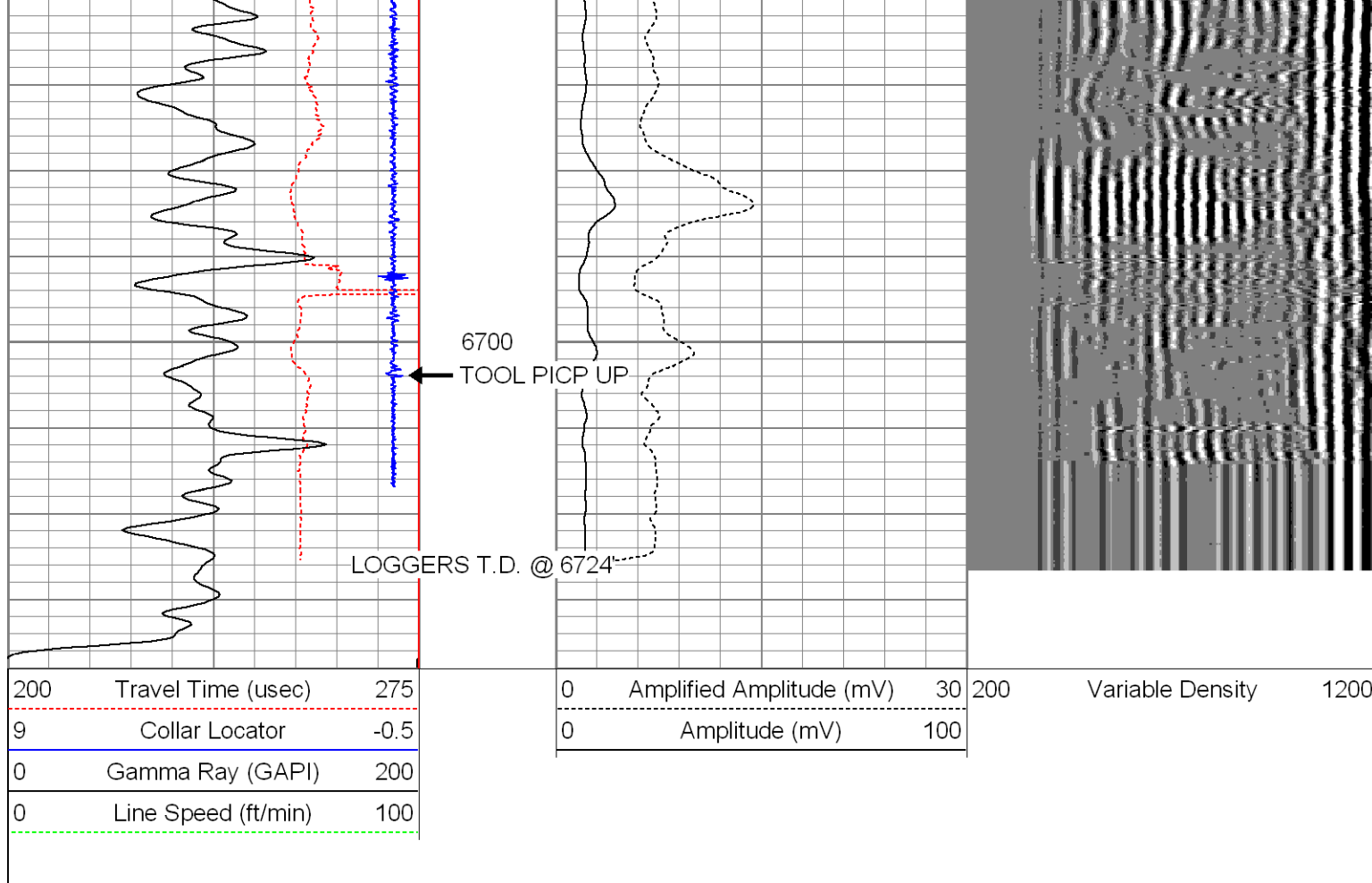
6500

6550

FLAG
6600

6650





Calibration Report		
Database File:	wlrnchae31-07pcbl.db	
Dataset Pathname:	pass2	
Dataset Creation:	Tue Jun 29 08:21:42 2010 by Log Open-Cased 071220	

Gamma Ray Calibration Report		
Serial Number:	tit/temp	
Tool Model:	temp/tit	
Performed:	Sat May 01 08:49:17 2010	
Calibrator Value:	1.0	GAPI
Background Reading:	0.0	cps
Calibrator Reading:	1.0	cps
Sensitivity:	1.2000	GAPI/cps

Cement Bond Log Calibration Report			
Serial Number:	TEKCO-01		
Tool Model:	TEKCO-1x2		
Performed:	Tue Jun 29 08:21:40 2010		
Depth:	412.45	ft	
Casing Diameter:	4.5	in	
	3' Spacing	5' Spacing	
Signal Zero:	0.4	0.4	mV
Calibrated Amplitude:	81.1961	81.1961	mV
Reading at Signal Zero:	-0.00383301	-0.00339355	V
Reading in Free Pipe:	2.5	2.5	V

Gain:	32.269	32.2746
Offset:	0.523687	0.509526