

---

**WILLIAMS PRODUCTION RMT INC - EBUS**

---

**GM 443-22  
GRAND VALLEY  
Garfield County , Colorado**

**Cement Surface Casing**  
**29-Apr-2011**

**Post Job Summary**

## The Road to Excellence Starts with Safety

Sold To #: 300721	Ship To #: 2850327	Quote #:	Sales Order #: 8124623
Customer: WILLIAMS PRODUCTION RMT INC - EBUS	Customer Rep: WILSON, W.C		
Well Name: GM	Well #: 443-22	API/UWI #: 05-045-20218	
Field: GRAND VALLEY	City (SAP): PARACHUTE	County/Parish: Garfield	State: Colorado
Lat: N 39.5 deg. OR N 39 deg. 29 min. 59.395 secs.	Long: W 108.088 deg. OR W -109 deg. 54 min. 44.323 secs.		
Contractor: H&P 280	Rig/Platform Name/Num: H&P 280		
Job Purpose: Cement Surface Casing			
Well Type: Development Well	Job Type: Cement Surface Casing		
Sales Person: SCOTT, KYLE	Srv Supervisor: ANGLESTEIN, TROY	MBU ID Emp #: 436099	

## Job Personnel

HES Emp Name	Exp Hrs	Emp #	HES Emp Name	Exp Hrs	Emp #	HES Emp Name	Exp Hrs	Emp #
ANGLESTEIN, TROY Edward WM	4.5	436099	BRENNECKE, ANDREW Bailey	4.5	486345	JENSEN, JESSE Robert	4.5	478774
PHILLIPS, MARK Bejar	4.5	445272						

## Equipment

HES Unit #	Distance-1 way	HES Unit #	Distance-1 way	HES Unit #	Distance-1 way	HES Unit #	Distance-1 way
10551730C	60 mile	10592964	60 mile	10744549	60 mile	10951250	60 mile
10973571	60 mile						

## Job Hours

Date	On Location Hours	Operating Hours	Date	On Location Hours	Operating Hours	Date	On Location Hours	Operating Hours
04/28/2011	1.5	0	04/29/2011	3	1			

**TOTAL** Total is the sum of each column separately

## Job

Formation Name	Top	Bottom	Called Out	Date	Time	Time Zone
Formation Depth (MD)			On Location	28 - Apr - 2011	17:00	MST
Form Type		BHST	Job Started	28 - Apr - 2011	22:30	MST
Job depth MD	1220. ft	Job Depth TVD	Job Completed	29 - Apr - 2011	01:08	MST
Water Depth		Wk Ht Above Floor	Departed Loc	29 - Apr - 2011	00:01	MST
Perforation Depth (MD)	From	To		29 - Apr - 2011	03:00	MST

## Well Data

Description	New / Used	Max pressure psig	Size in	ID in	Weight lbm/ft	Thread	Grade	Top MD ft	Bottom MD ft	Top TVD ft	Bottom TVD ft
OPEN HOLE				13.5				.	1220.		
SURFACE CASING	Unknown		9.625	9.001	32.3		H-40	.	1207.8		

## Tools and Accessories

Type	Size	Qty	Make	Depth	Type	Size	Qty	Make	Depth	Type	Size	Qty	Make
Guide Shoe					Packer					Top Plug	9.625	1	HES
Float Shoe					Bridge Plug					Bottom Plug			
Float Collar					Retainer					SSR plug set			
Insert Float										Plug Container	9.625	1	HES
Stage Tool										Centralizers			

## Miscellaneous Materials

Gelling Agt	Conc	Surfactant	Conc	Acid Type	Qty	Conc	%
Treatment Fld	Conc	Inhibitor	Conc	Sand Type	Size	Qty	

## Fluid Data

Stage/Plug #: 1	Fluid #	Stage Type	Fluid Name	Qty	Qty uom	Mixing Density lbm/gal	Yield ft <sup>3</sup> /sk	Mix Fluid Gal/sk	Rate bbl/min	Total Mix Fluid Gal/sk
-----------------	---------	------------	------------	-----	---------	------------------------	---------------------------	------------------	--------------	------------------------

Stage/Plug #: 1										
Fluid #	Stage Type	Fluid Name	Qty	Qty uom	Mixing Density lbm/gal	Yield ft <sup>3</sup> /sk	Mix Fluid Gal/sk	Rate bbl/min	Total Mix Fluid Gal/sk	
1	Fresh Water Spacer		20.00	bbl	.	.0	.0	6		
2	VersaCem Lead Cement	VERSACEM (TM) SYSTEM (452010)	160.0	sacks	12.3	2.38	13.75	8	13.75	
3	VersaCem Tail Cement	VERSACEM (TM) SYSTEM (452010)	160.0	sacks	12.8	2.11	11.76	8	11.76	
11.76 Gal		FRESH WATER								
4	Displacement Fluid		92.00	bbl	8.34	.0	.0	10		
Calculated Values		Pressures		Volumes						
Displacement	91.5	Shut In: Instant		Lost Returns	0	Cement Slurry	127.9	Pad		
Top Of Cement	SURFACE	5 Min		Cement Returns	26	Actual Displacement	91.5	Treatment		
Frac Gradient		15 Min		Spacers	20	Load and Breakdown		Total Job	240	
Rates										
Circulating		Mixing	8	Displacement	10	Avg. Job	8			
Cement Left In Pipe	Amount	44.3 ft	Reason	Shoe Joint						
Frac Ring # 1 @	ID	Frac ring # 2 @	ID	Frac Ring # 3 @	ID	Frac Ring # 4 @	ID			
The Information Stated Herein Is Correct				Customer Representative Signature						

*The Road to Excellence Starts with Safety*

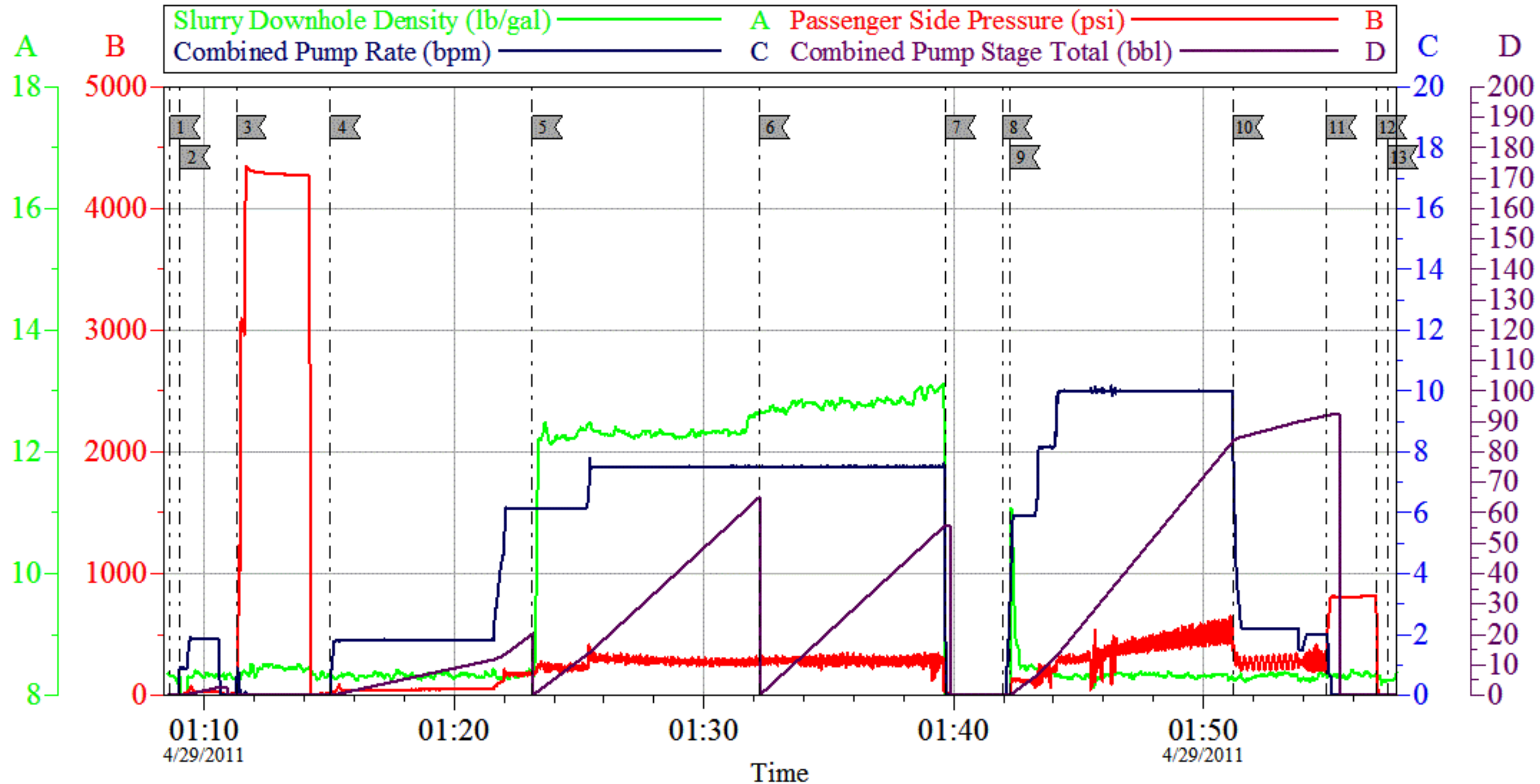
<b>Sold To #:</b> 300721	<b>Ship To #:</b> 2850327	<b>Quote #:</b>	<b>Sales Order #:</b> 8124623
<b>Customer:</b> WILLIAMS PRODUCTION RMT INC - EBUS		<b>Customer Rep:</b> WILSON, W.C	
<b>Well Name:</b> GM	<b>Well #:</b> 443-22	<b>API/UWI #:</b> 05-045-20218	
<b>Field:</b> GRAND VALLEY	<b>City (SAP):</b> PARACHUTE	<b>County/Parish:</b> Garfield	<b>State:</b> Colorado
<b>Legal Description:</b>			
<b>Lat:</b> N 39.5 deg. OR N 39 deg. 29 min. 59.395 secs.		<b>Long:</b> W 108.088 deg. OR W -109 deg. 54 min. 44.323 secs.	
<b>Contractor:</b> H&P 280		<b>Rig/Platform Name/Num:</b> H&P 280	
<b>Job Purpose:</b> Cement Surface Casing			<b>Ticket Amount:</b>
<b>Well Type:</b> Development Well		<b>Job Type:</b> Cement Surface Casing	
<b>Sales Person:</b> SCOTT, KYLE		<b>Srv Supervisor:</b> ANGLESTEIN, TROY	<b>MBU ID Emp #:</b> 436099

Activity Description	Date/Time	Cht #	Rate bbl/min	Volume bbl		Pressure psig		Comments
				Stage	Total	Tubing	Casing	
Call Out	04/28/2011 17:00							
Pre-Convoy Safety Meeting	04/28/2011 20:45							ALL HES EMPLOYEES
Arrive At Loc	04/28/2011 22:30							RIG STILL RUNNING CASING CIRCULATED FOR 1 HOUR
Assessment Of Location Safety Meeting	04/28/2011 22:45							ALL HES EMPLOYEES
Rig-Up Equipment	04/28/2011 23:00							1 HT 400 PUMP TRUCK, 1 660 BULK TRUCK, 1 9.625 QUICK LATCH PLUG CONTAINER, 1 F 450 P/U
Pre-Job Safety Meeting	04/29/2011 01:00							ALL HES EMPLOYEES, RIG CREW, CO REP.
Start Job	04/29/2011 01:08							9.625 CASING SET AT 1207.8', FC 1163.54', TD: 1220, OPEN HOLE 13.5", MUD WT 10.7 PPG, 600 BBLS OF H2O ON LOCATION, WATER SAMPLE SUBMITTED.
Pump Water	04/29/2011 01:09		2	2			41.0	FILL LINES
Pressure Test	04/29/2011 01:11		0.5	0.5		4260.0		NO LEAKS
Pump Spacer 1	04/29/2011 01:15		6	20			200.0	FRESH WATER
Activity Description	Date/Time	Cht #	Rate bbl/min	Volume bbl		Pressure psig		Comments
				Stage	Total	Tubing	Casing	

Pump Lead Cement	04/29/2011 01:23		8	67.8			280.0	160 SKS VERSACEM CMT TO BE MIXED AT 12.3 PPG, 2.38 YIELD, 13.75 GAL/SK, CMT TO BE WEIGHED VIA PRESSURE BALANCED MUD SCALES WET AND DRY SAMPLES SUBMITTED
Pump Tail Cement	04/29/2011 01:32		8	60.1			270.0	160 SKS VERSACEM CMT TO BE MIXED AT 12.8 PPG, 2.11 YIELD, 11.75 GAL/SK, CMT TO BE WEIGHED VIA PRESSURE BALANCED MUD SCALES. WET AND DRY SAMPLES SUBMITTED.
Shutdown	04/29/2011 01:39							FOR NO MORE THEN 5 MINUTES,
Pump Displacement	04/29/2011 01:42		10	91.5			510.0	FRESHWATER
Cement Returns to Surface	04/29/2011 01:46		10	65			470.0	26 BBLS OF CEMENT TO SURFACE.
Slow Rate	04/29/2011 01:51		2	81			270.0	10 BBLS PRIOR TO CALCULATED DISPLACEMENT
Drop Plug	04/29/2011 01:54							PLUG LAUNCHED
Bump Plug	04/29/2011 01:54		2	91.5			303.0	PLUG LANDED AT 803 HELD FOR TWO MINUTES
Check Floats	04/29/2011 01:56							FLOATS HOLDING, NO ANNULAR FLOW AT SHAKERS NOTED
End Job	04/29/2011 01:57							THANK YOU FOR USING HES FROM TROY ANGLESTEIN AND CREW.
Post-Job Safety Meeting (Pre Rig-Down)	04/29/2011 02:00							ALL HES EMPLOYEES
Rig-Down Equipment	04/29/2011 02:30							SAFELY
Pre-Convoy Safety Meeting	04/29/2011 02:50							ALL HES EMPLOYEES
Crew Leave Location	04/29/2011 03:00							SITE WAS AS CLEAN AS WHEN WE ARRIVED

# WILLIAMS

## GM 443-22 SURFACE



Local Event Log					
1	START JOB	01:08:38	2	FILL LINES	01:09:02
3	TEST LINES	01:11:17	4	PUMP H2O SPACER	01:15:03
5	PUMP LEAD CEMENT	01:23:08	6	PUMP TAIL CEMENT	01:32:14
7	SHUTDOWN	01:39:41	8	DROP PLUG	01:41:57
9	PUMP DISPLACEMENT	01:42:15	10	SLOW RATE	01:51:13
11	BUMP PLUG	01:54:56	12	CHECK FLOATS	01:56:56
13	END JOB	01:57:23			

Customer: Halliburton  
 Well Description: GM 443-22  
 Company Rep: W.C. WILSON

Job Date: 29-Apr-2011  
 Job Type: SURFACE  
 Supervisor: TROY ANGLESTEIN

Sales Order #: 01:08:33  
 ADC Used: YES  
 ELITE 2: MARK PHILLIPS

OptiCem v6.4.9  
 29-Apr-11 02:38