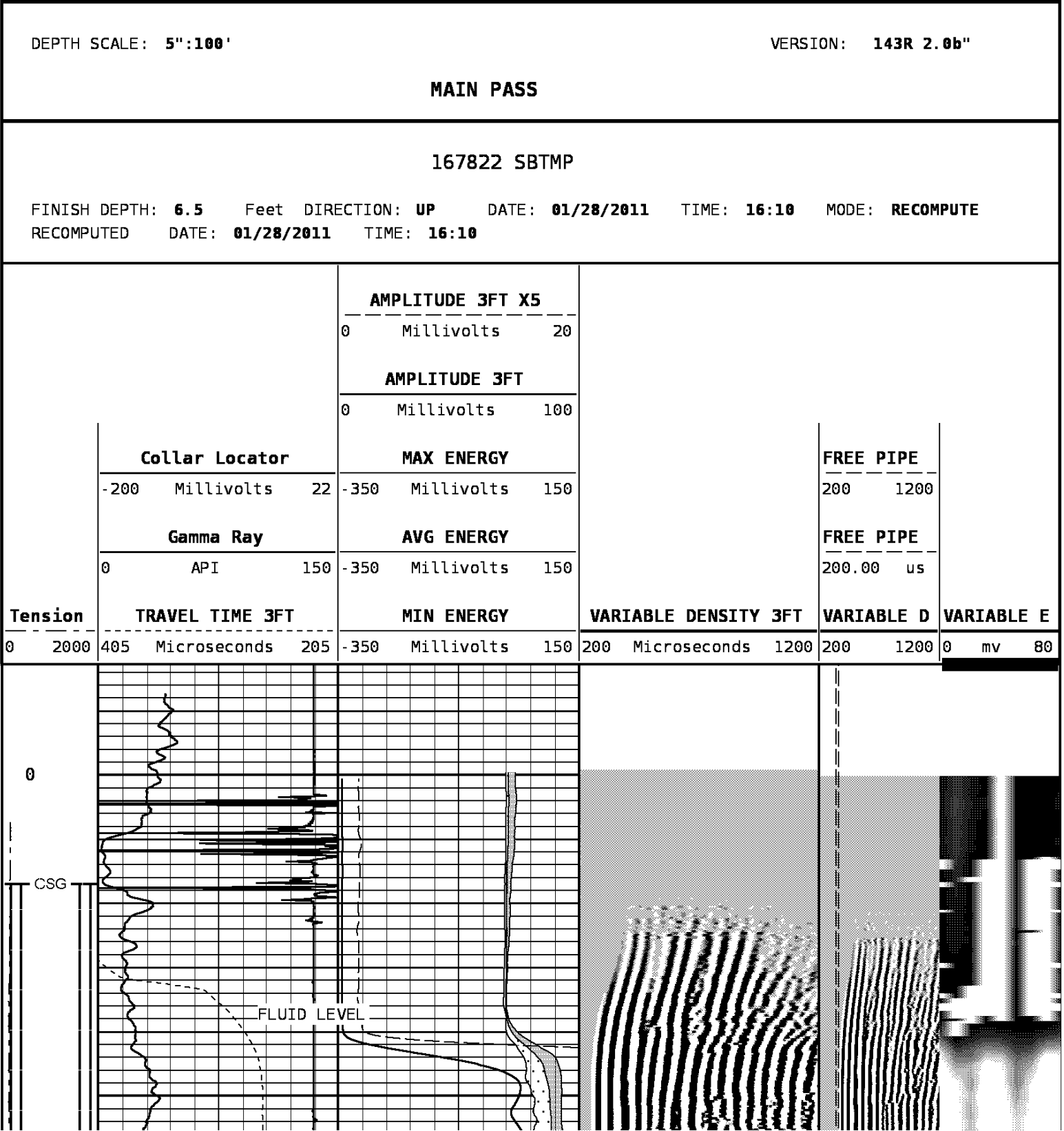


SECTOR CEMENT BOND LOG  
"STUCK PIPE LOG"  
7.000" 26 & 23 CASING

COMPANY CHEVRON USA		WELL LN HAGOOD A-15-X		FIELD RANGELY		CNTY RIOBLANCO STATE CO	
COMPANY CHEVRON USA		WELL LN HAGOOD A-15-X		FIELD RANGELY		COUNTY RIO BLANCO STATE COLORADO	
LOCATION:		SHL: 123'FNL, 1326'FEL		OTHER SERVICES:		NONE	
SEC. 23		TWP. 2N		RGE. 103W			
PERM. DATUM Ground Level				ELEV. 5443'		ELEV.: K.B. 5460'	
LOG MEASURED FROM K.B. 17 FT. ABOVE PERMANENT DATUM						D.F. -----	
DRILLING MEASURED FROM KELLY BUSHING						G.L. 5443'	
DATE		28-JAN-2011					
RUN NO.		ONE					
DEPTH DRILLER		6716'					
DEPTH LOGGER		2050'					
BTM. LOG INTERVAL		2042'					
TOP LOG INTERVAL		SURFACE					
OPEN HOLE SIZE		8.750					
TYPE FLUID		H2O					
DENS.		8.3		N/A			
MAX. REC. TEMP. F		N/A					
EST. CEMENT TOP		590'					
TIME WELL READY		ROA					
TIME LOGGER ON BTM.		SEE LOG					
EQUIP. NO.		14113					
LOCATION		GRANDJUNCTION					
RECORDED BY		ADAM MacPHERSON					
WITNESSED BY		JEFF PICKETT					
BOREHOLE RECORD				TUBING RECORD			
RUN NO.		BIT FROM TO		SIZE WGT. FROM TO			
CASING RECORD		SIZE WT/FT GRADE TYPE JOINT		TOP		BOTTOM	
SURFACE STRING		9.625"				SURF 2890'	
PROD. STRING		7.000" 23 & 26lbs				SURF 6705'	
LINER							

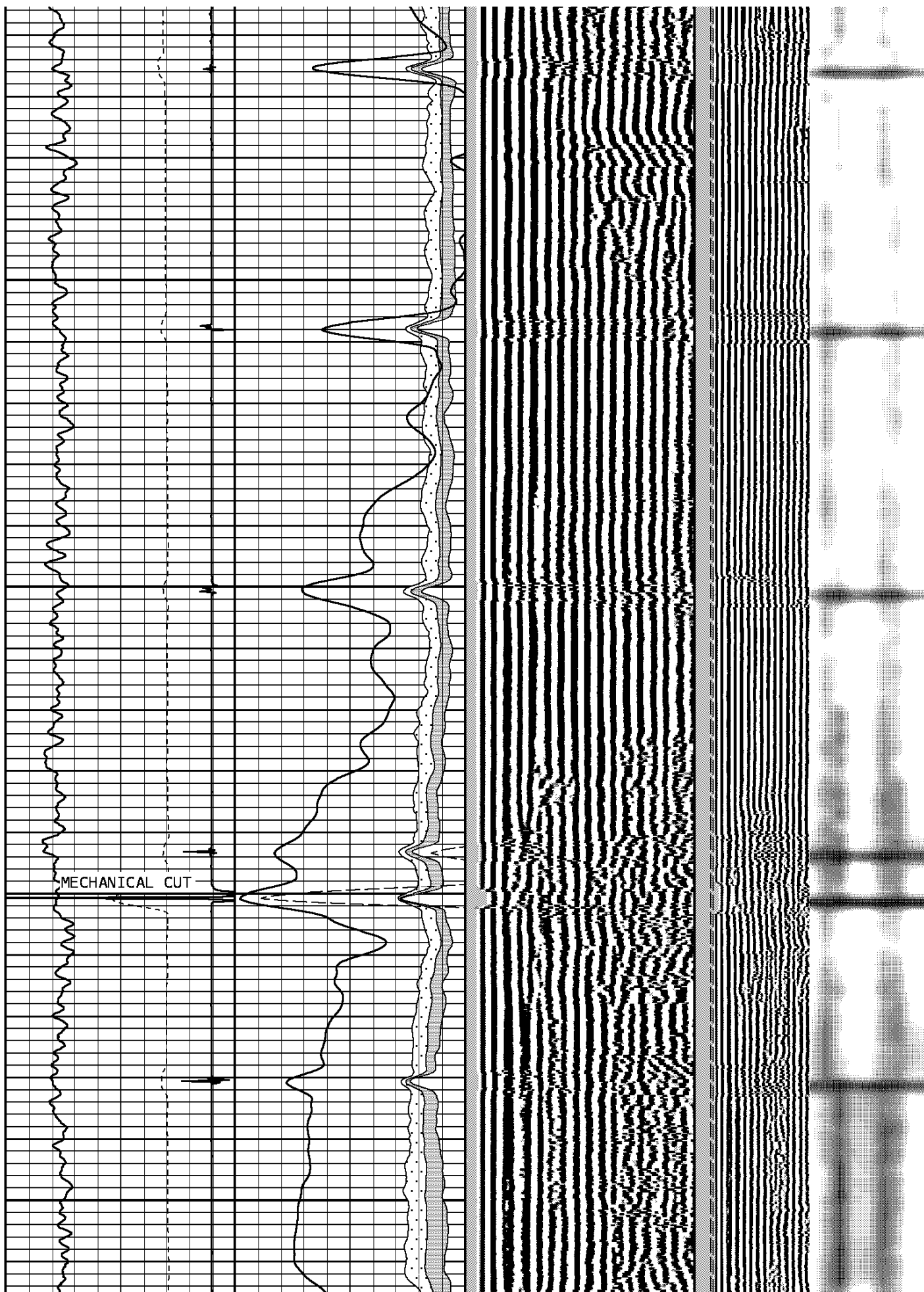
All interpretations of log data are opinions based on inferences from electrical or other measurements. We do not guarantee the accuracy or correctness of any interpretation or recommendation and we shall not be liable or responsible for any loss, cost, damages or expenses incurred or sustained by anyone resulting from any interpretation or recommendation made by any of our employees or agents.

REMARKS		Rig: AESC #9		Service Order # 167822	
LOG RAN ON WIRELINE DEPTH WITH 12' K.B. PER CO. REP.				BHT N/A °F	
LOG USED IN REFERENCE TO CURRENT ACTIVITY ONE 28-JAN-2011 AS A STUCK PIPE LOG					
9.625" CASING APPEARS VISIBLE ON THE LOG BEHIND 7" CASING				Prints: 4	
YOUR CREW TODAY IS: M.COBO, G. VAN					
THANK YOU FOR CHOOSING WEATHERFORD WIRELINE SRVS. GRD.JUNCTION.CO. (970)263-8501					
		EQUIPMENT DATA			
Bit Size	7.875"	Run No.	Tool Type	Tool No.	Other
Well Status	WORK OVER	ONE	CENA	210	
Surface Pressure		ONE	CTBA	330	
Shut In	Flowing	ONE	GRBA	322	
ZERO	NO	ONE	CENB	152	
		ONE	STBA	342	
		ONE	CENA	240	

100

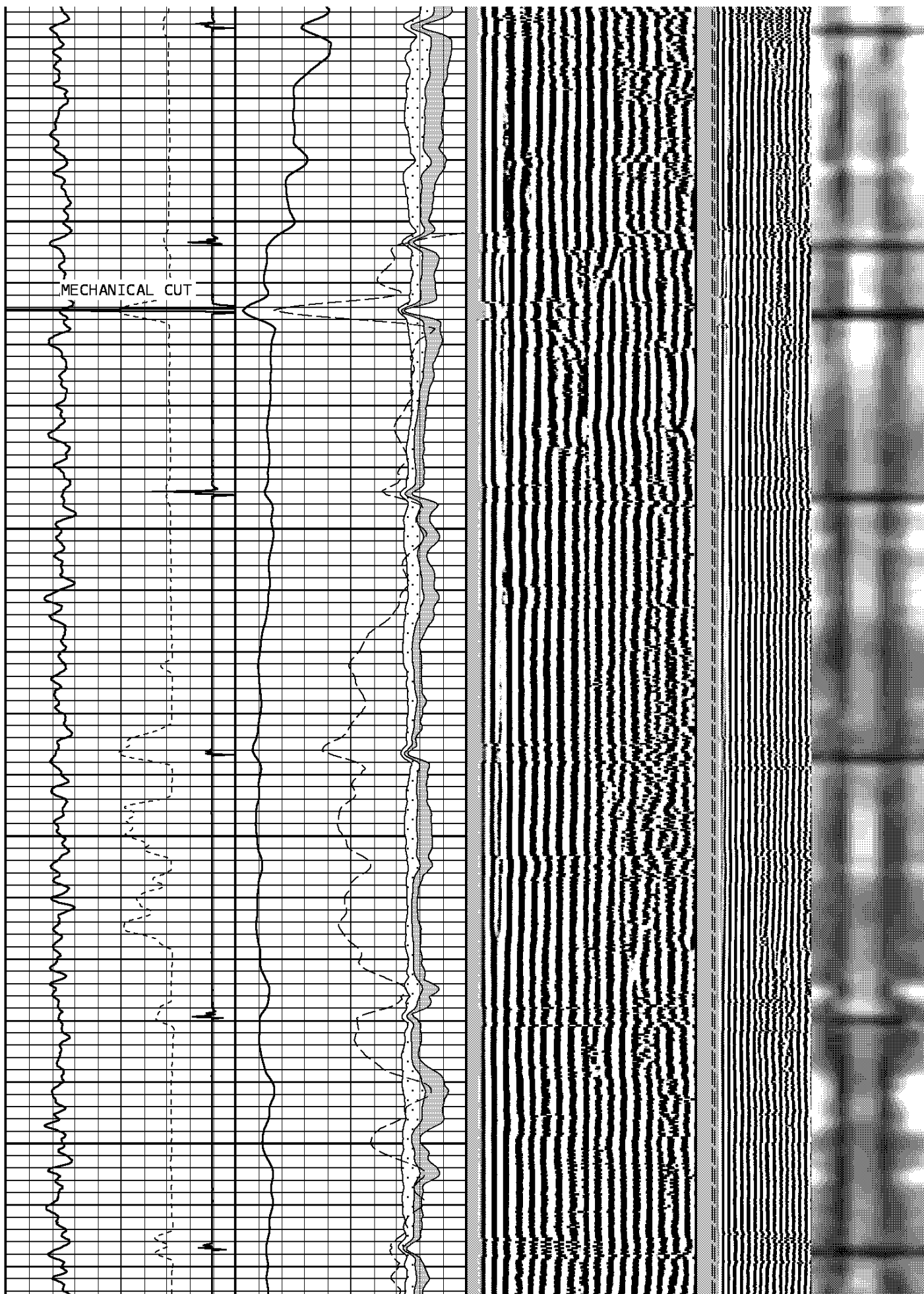
200



300

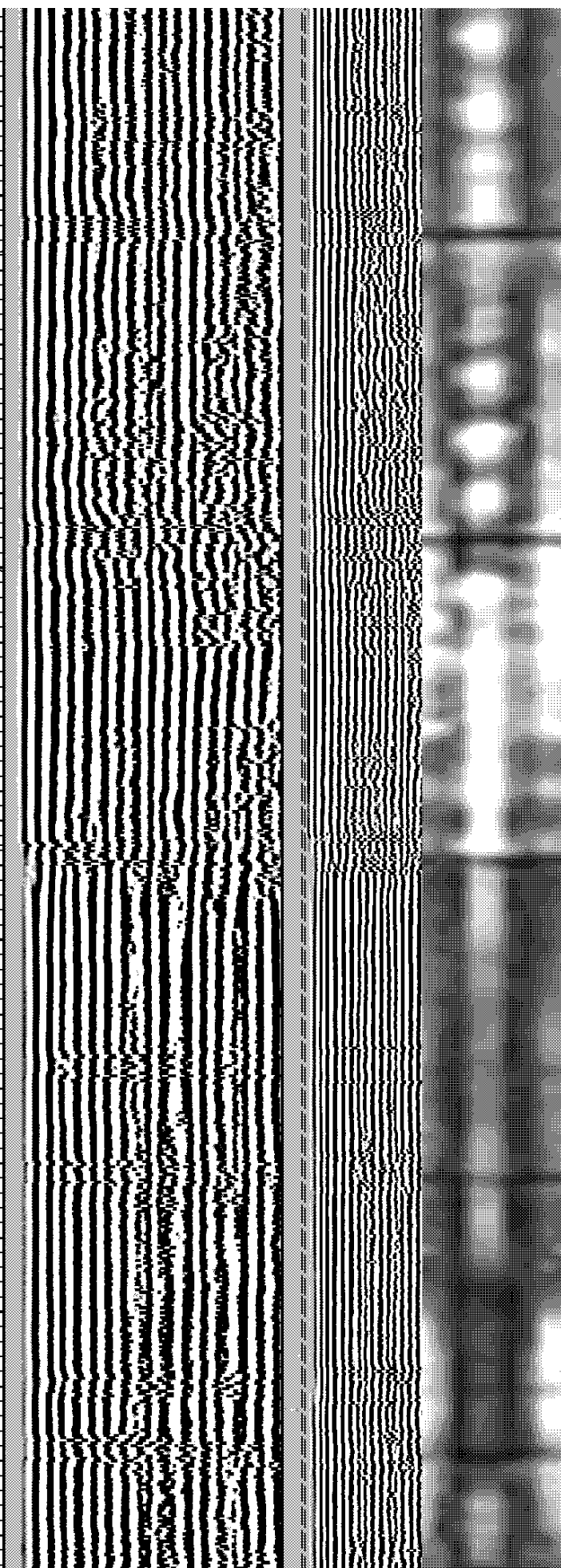
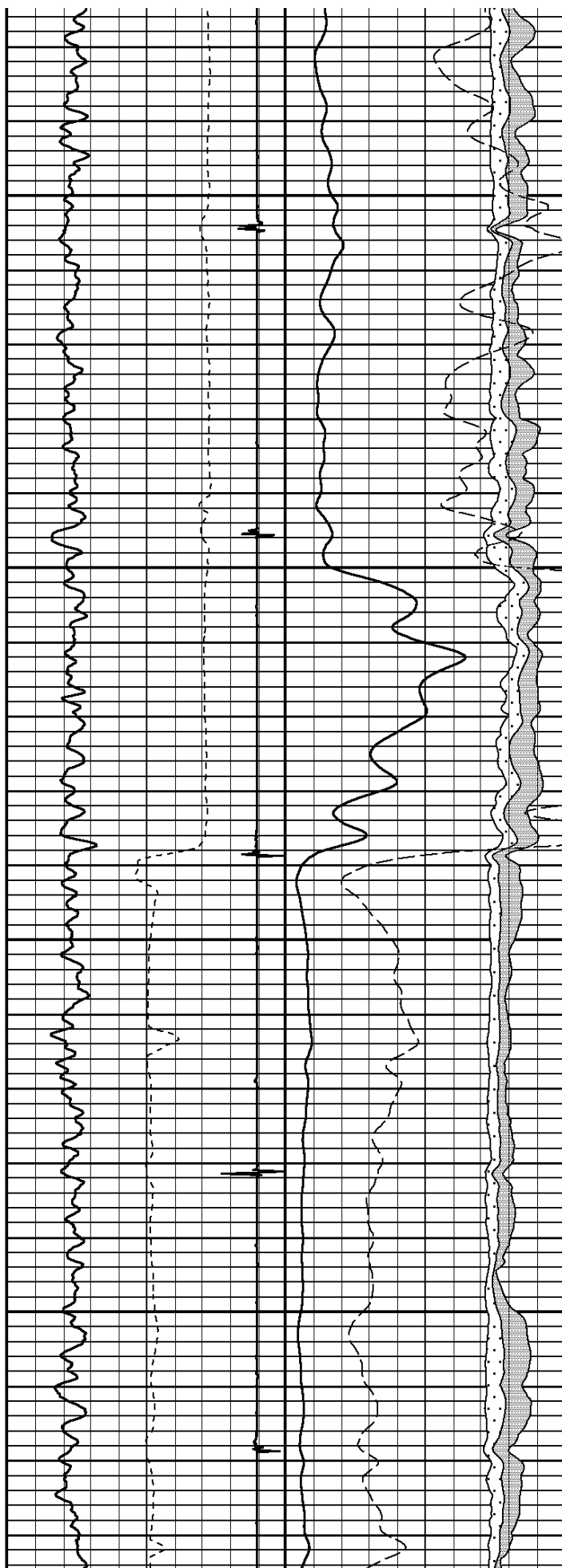
MECHANICAL CUT

400



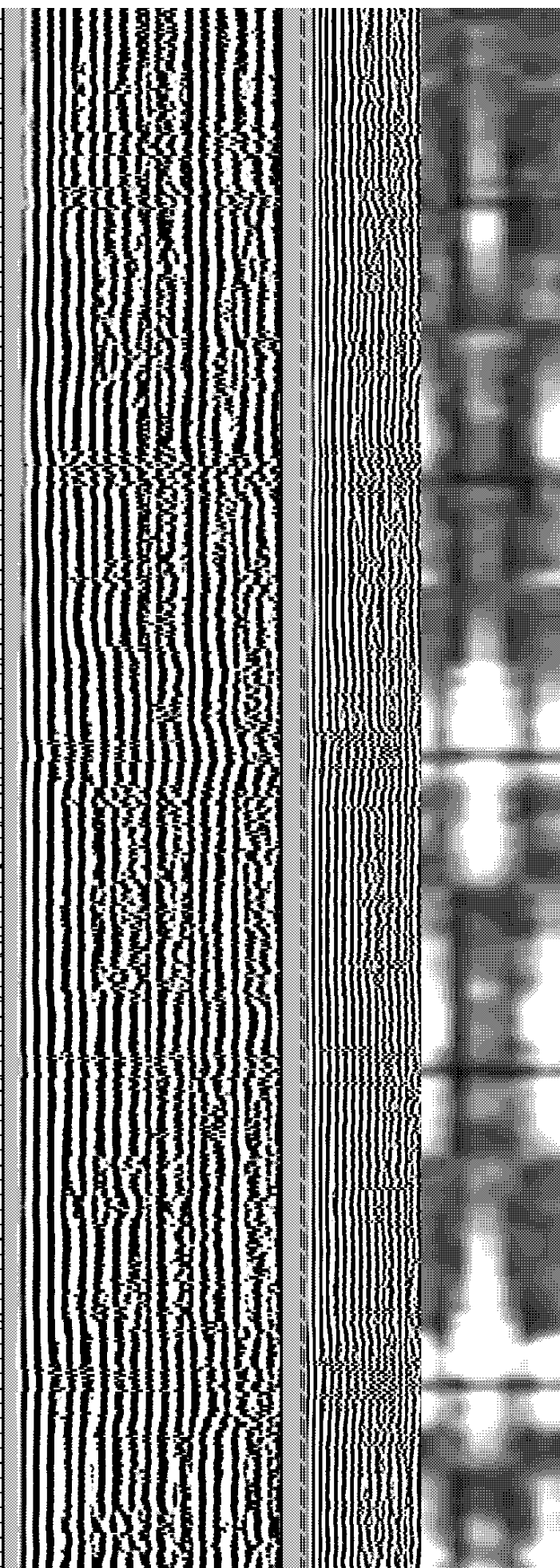
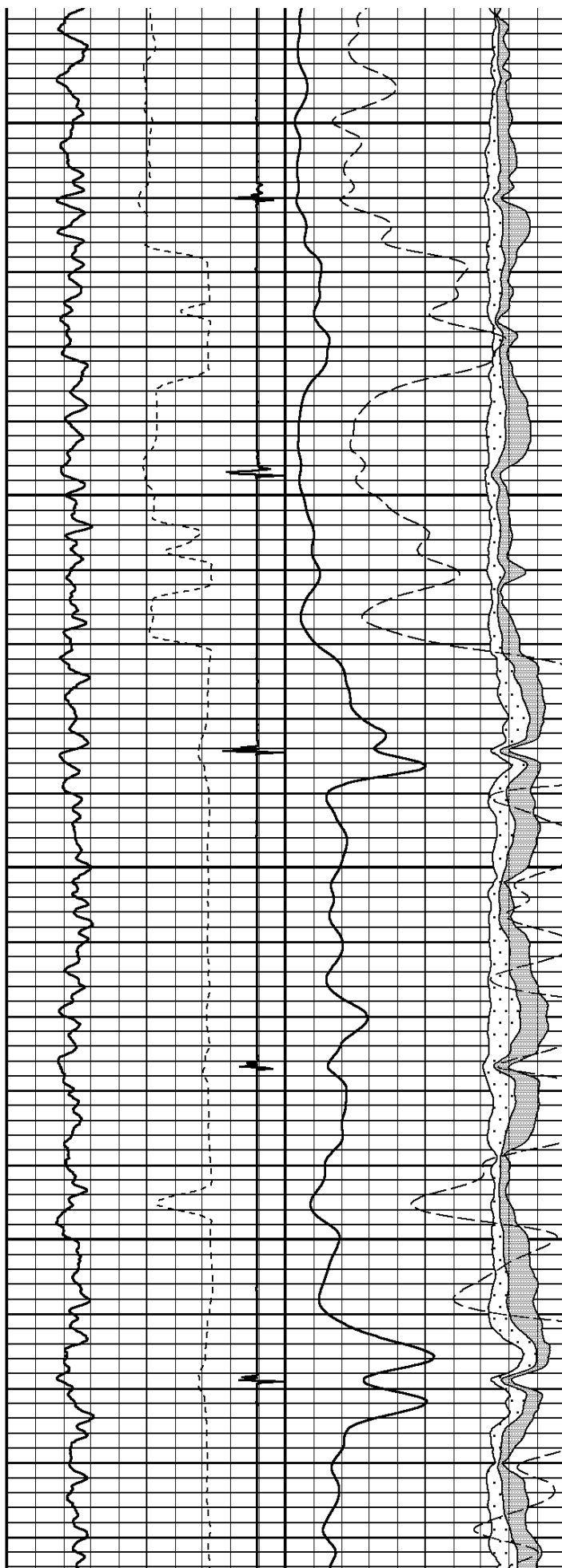
500

600



700

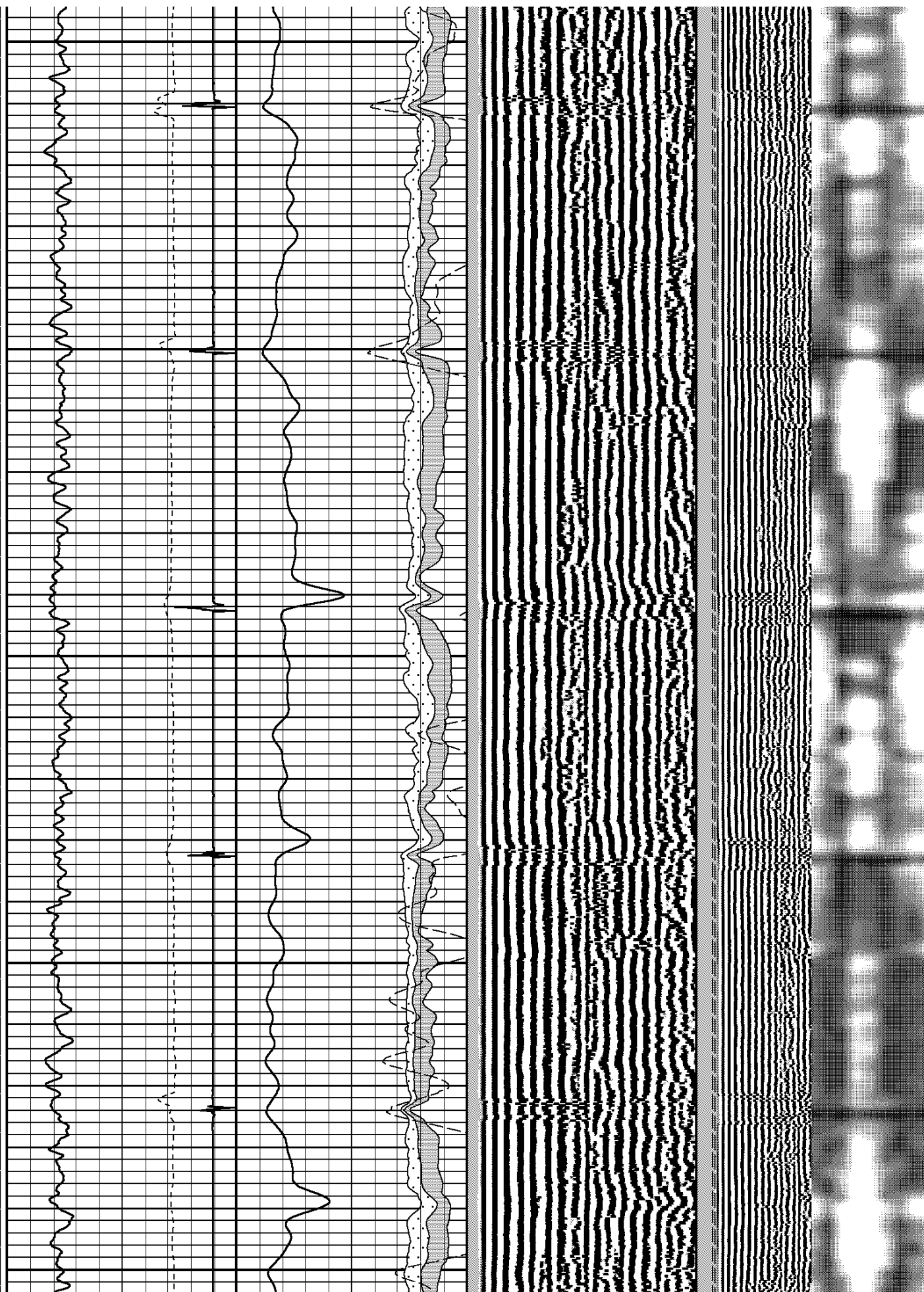
800



900

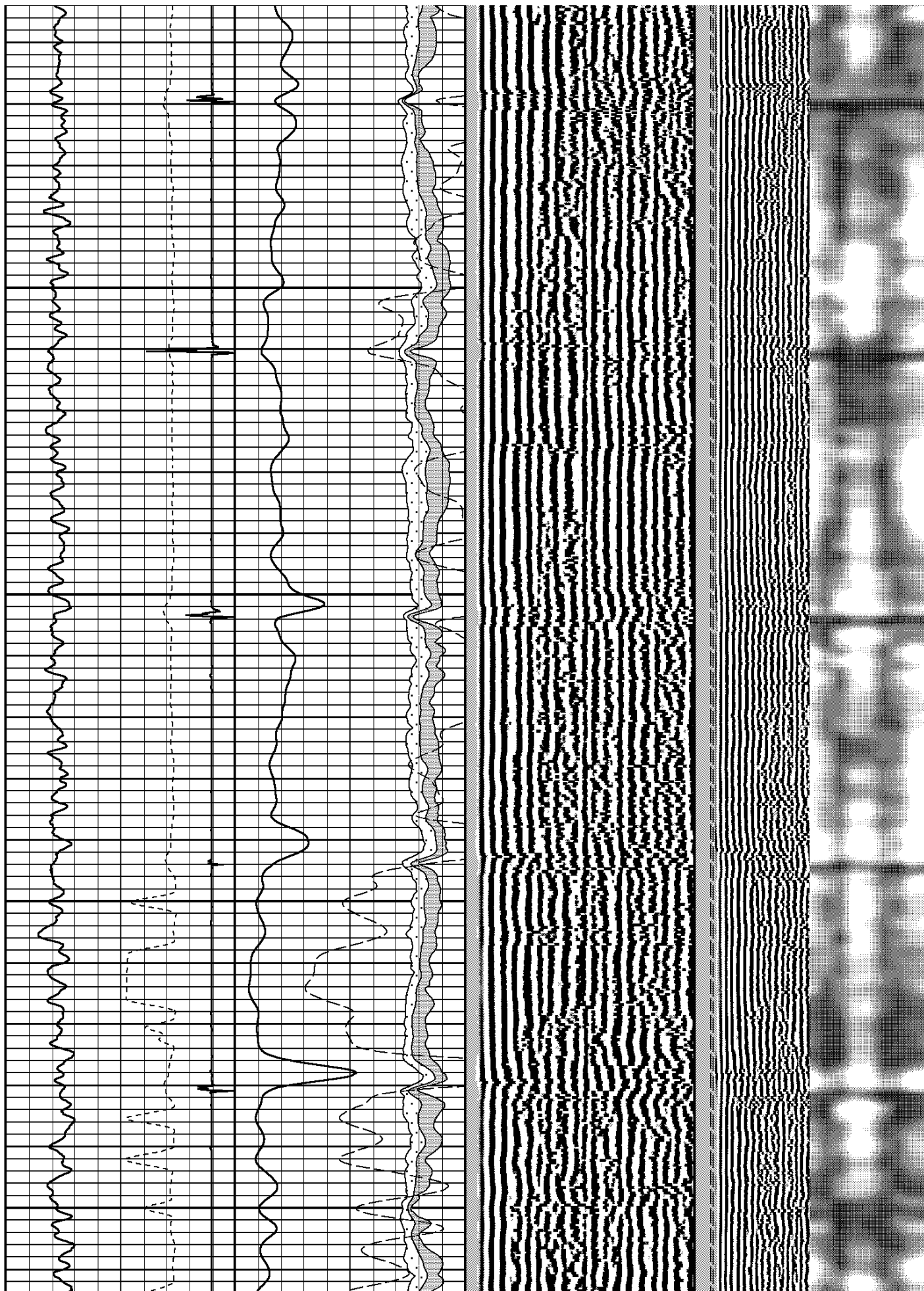
1000

1100



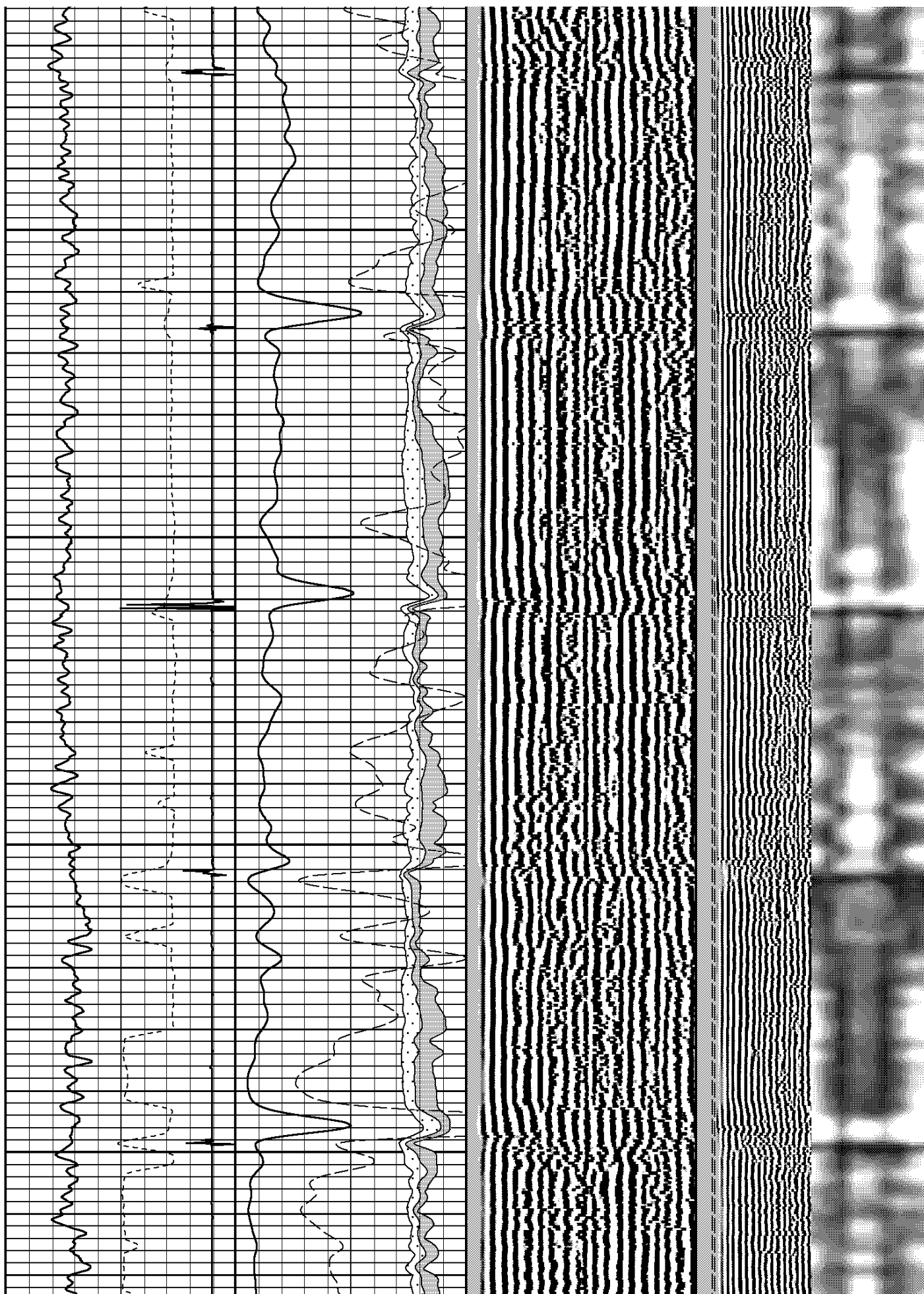
1200

1300



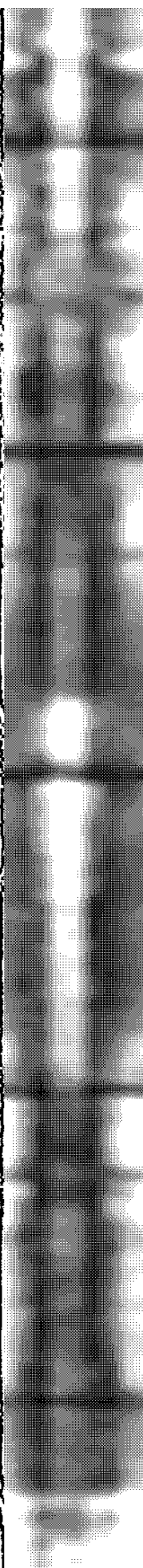
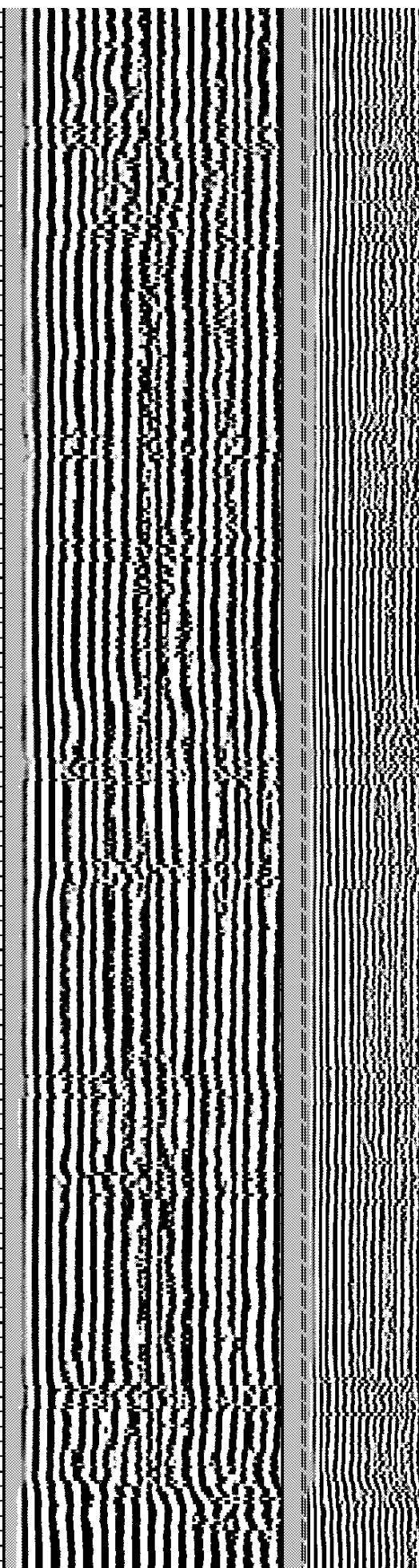
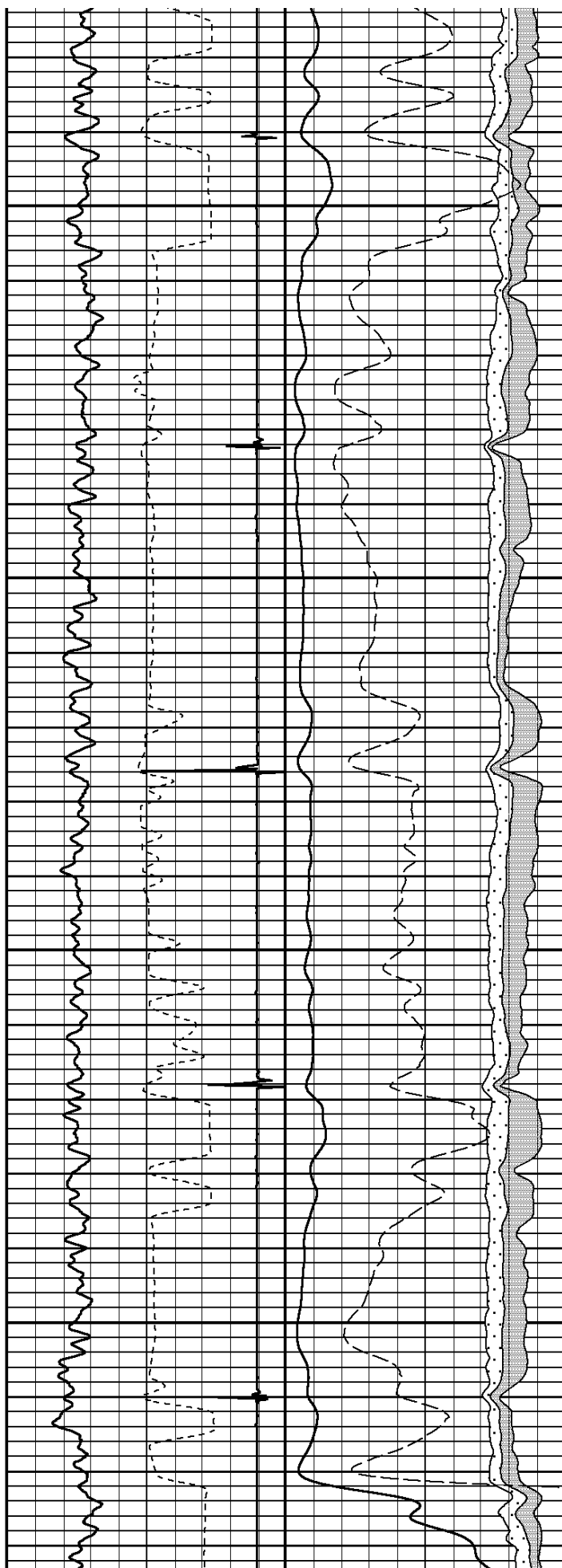
1400

1500



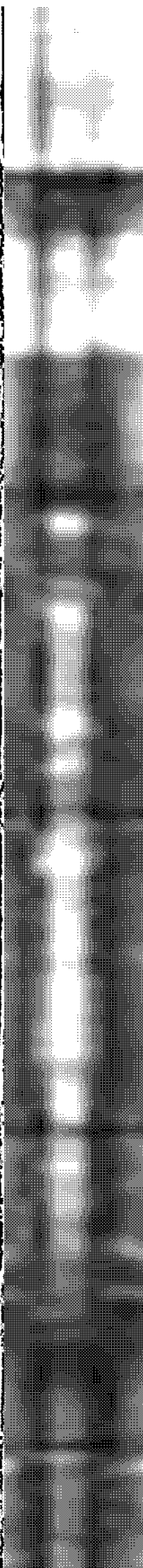
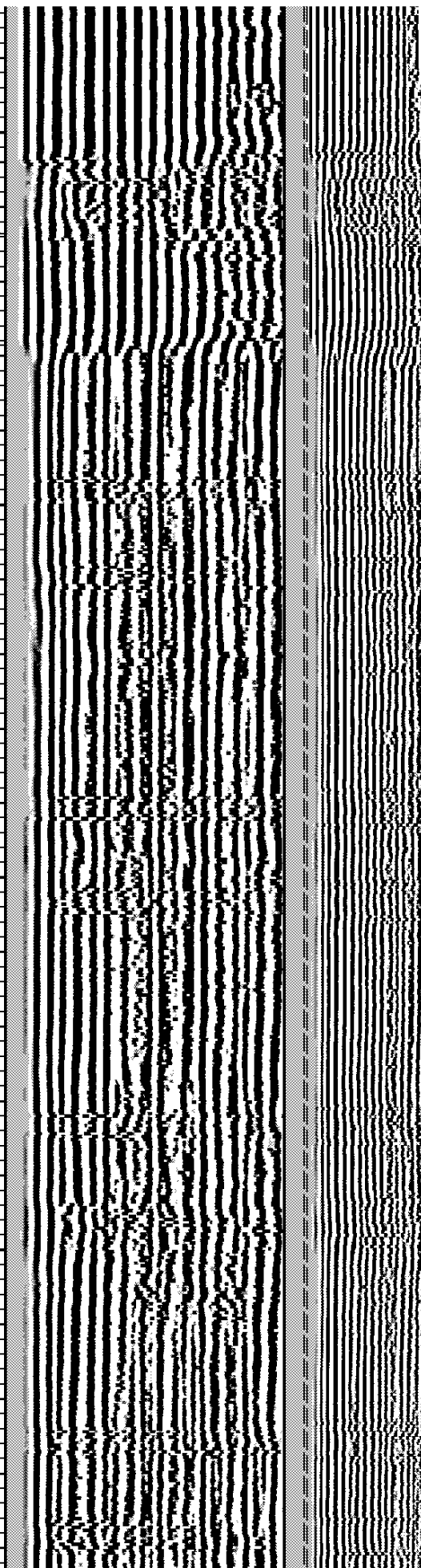
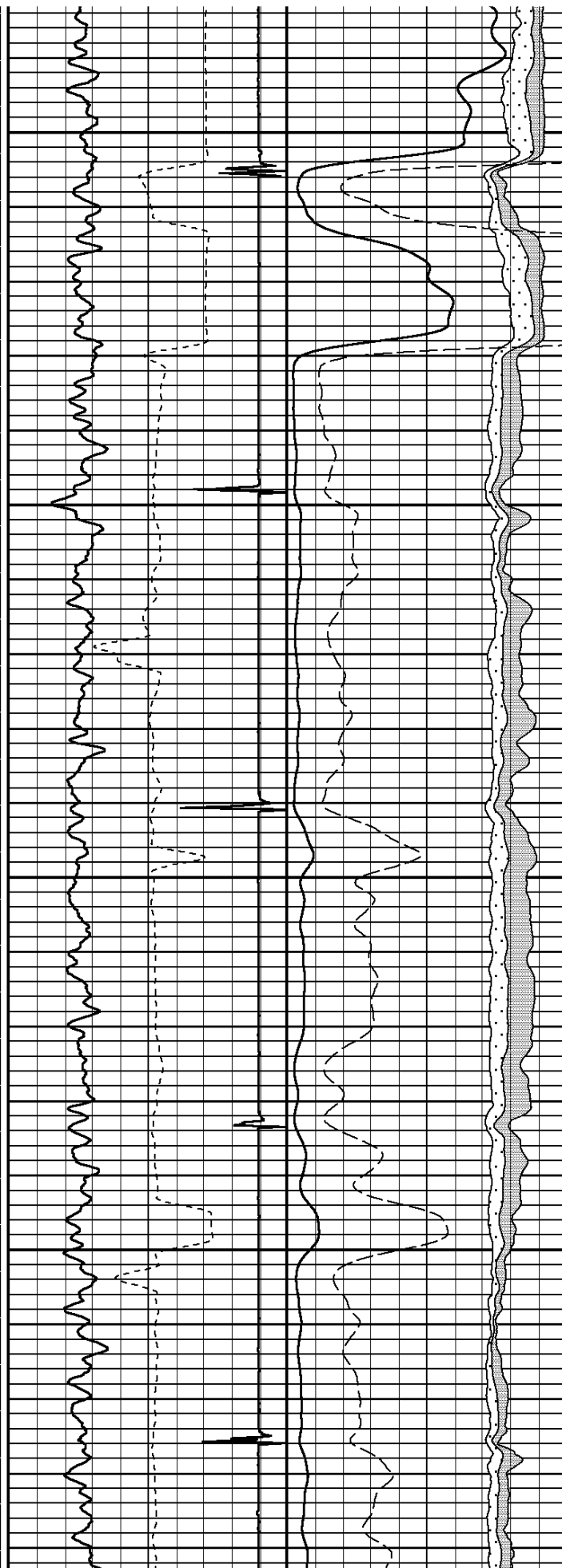
1600

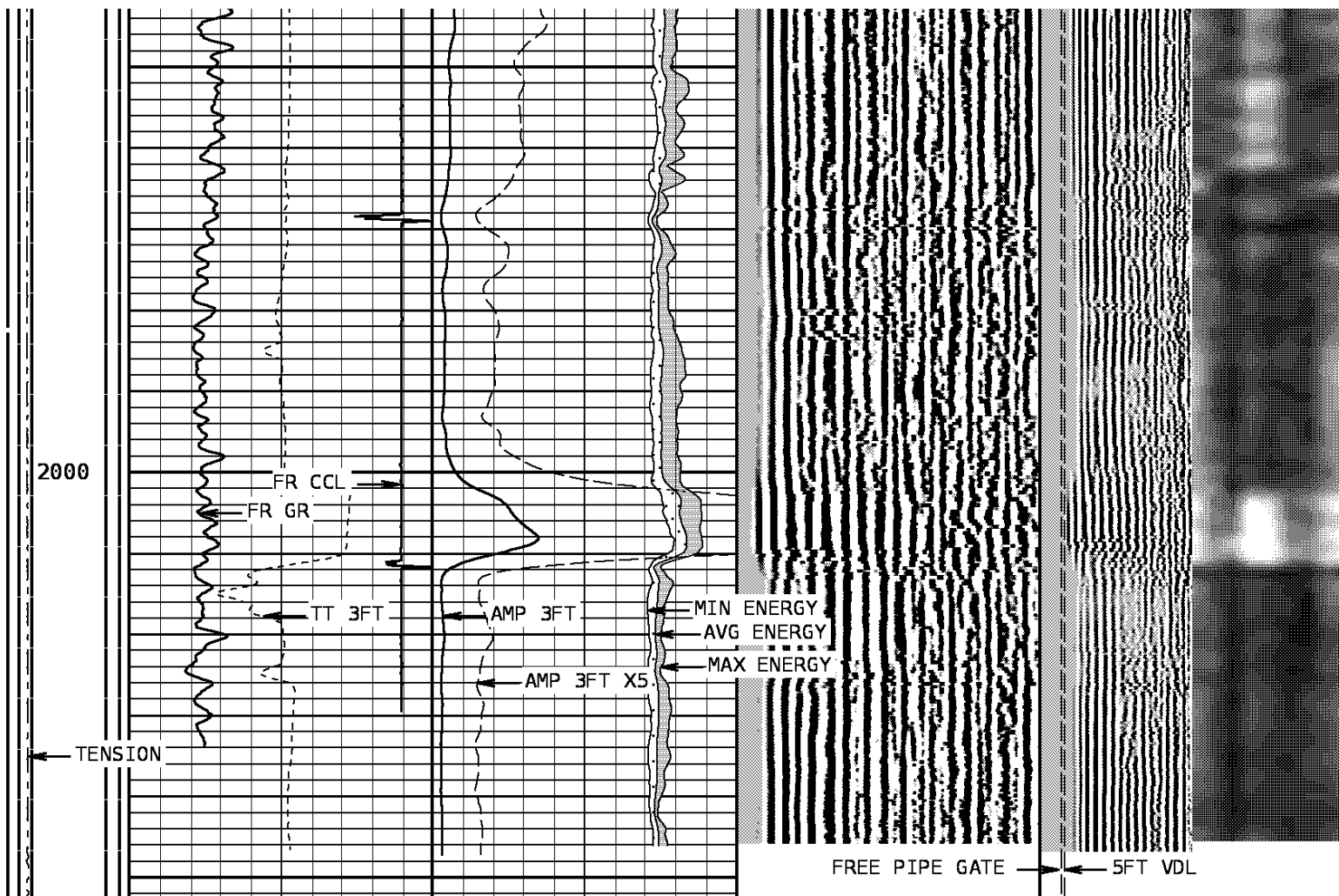
1700



1800

1900





Tension	TRAVEL TIME 3FT			MIN ENERGY			VARIABLE DENSITY 3FT			VARIABLE D		VARIABLE E		
02000	405	Microseconds	205	-350	Millivolts	150	200	Microseconds	1200	200	1200	0	mv	80
	Gamma Ray			AVG ENERGY				FREE PIPE						
	0	API	150	-350	Millivolts	150		200.00 us						
	Collar Locator			MAX ENERGY				FREE PIPE						
	-200	Millivolts	22	-350	Millivolts	150		2001200						
				AMPLITUDE 3FT										
				0Millivolts100										
				AMPLITUDE 3FT X5										
			0Millivolts20											

START DEPTH: 2053.1 DIRECTION: UP DATE: 01/28/2011 TIME: 16:08 MODE: RECOMPUTE  
 RECOMPUTED DATE: 01/28/2011 TIME: 16:08

167822 SBTMP

MAIN PASS

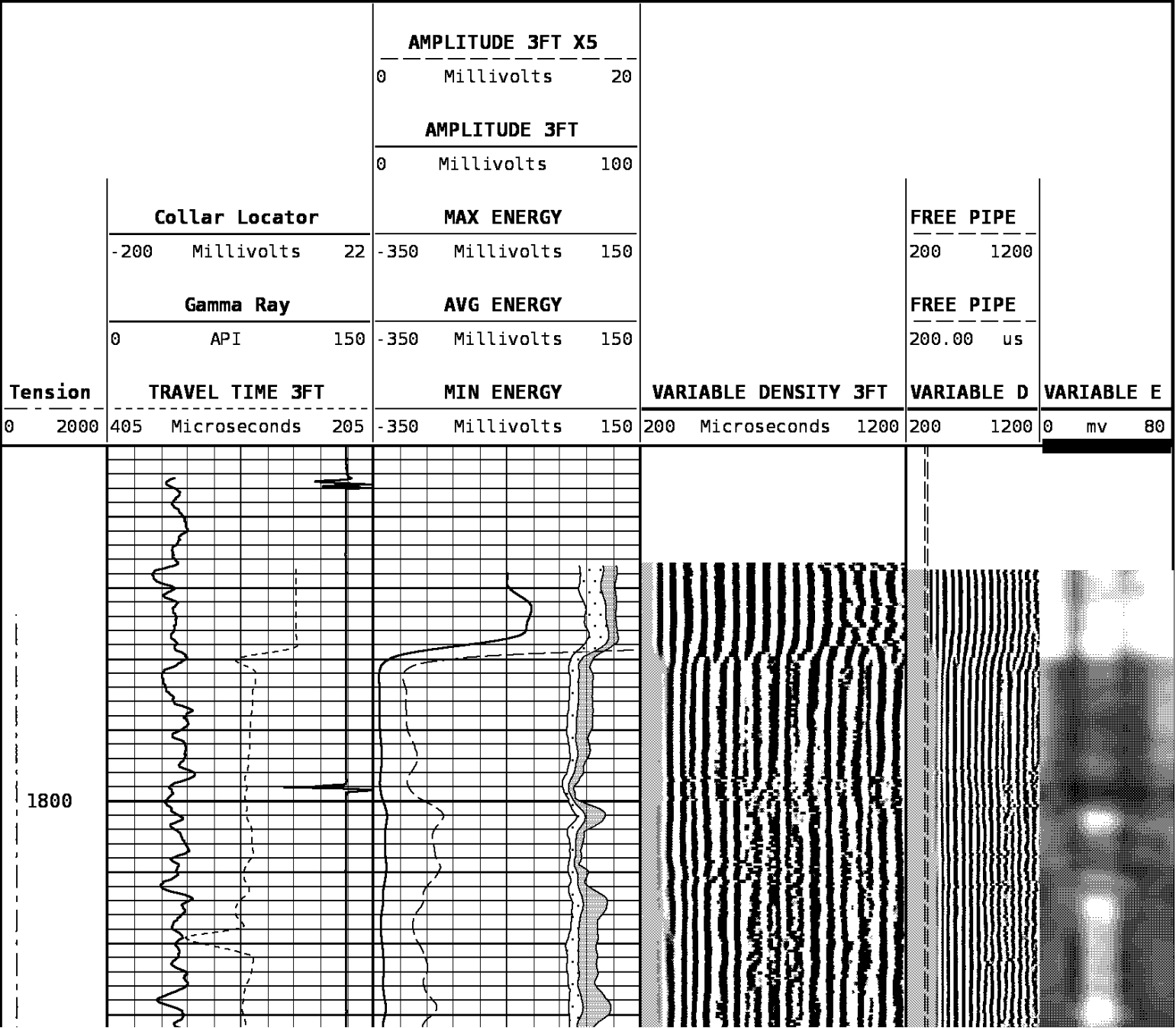
DEPTH SCALE: 5":100'

VERSION: 143R 2.0b"

REPEAT PASS

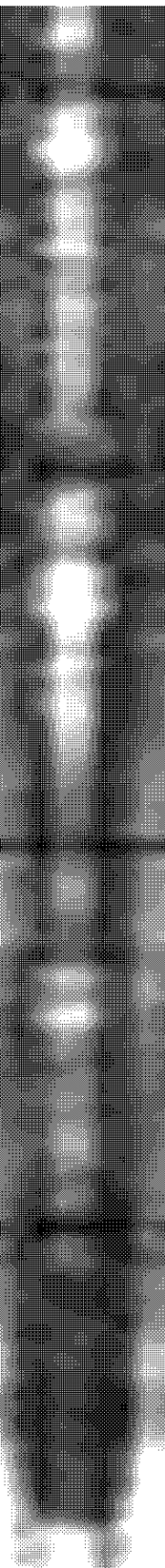
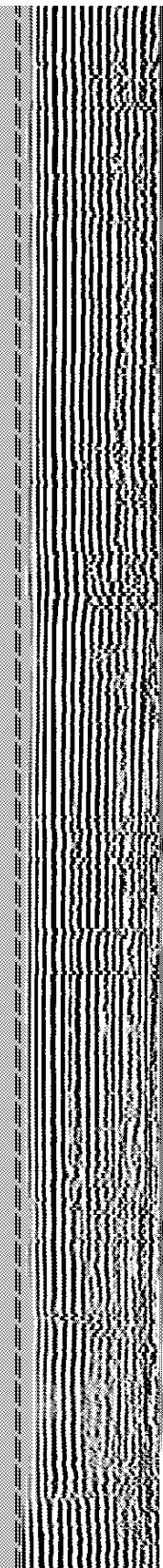
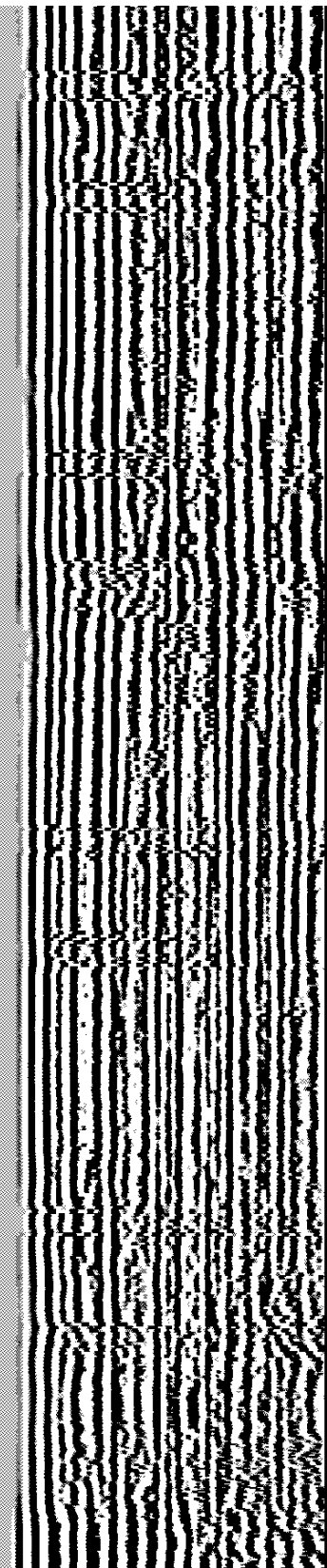
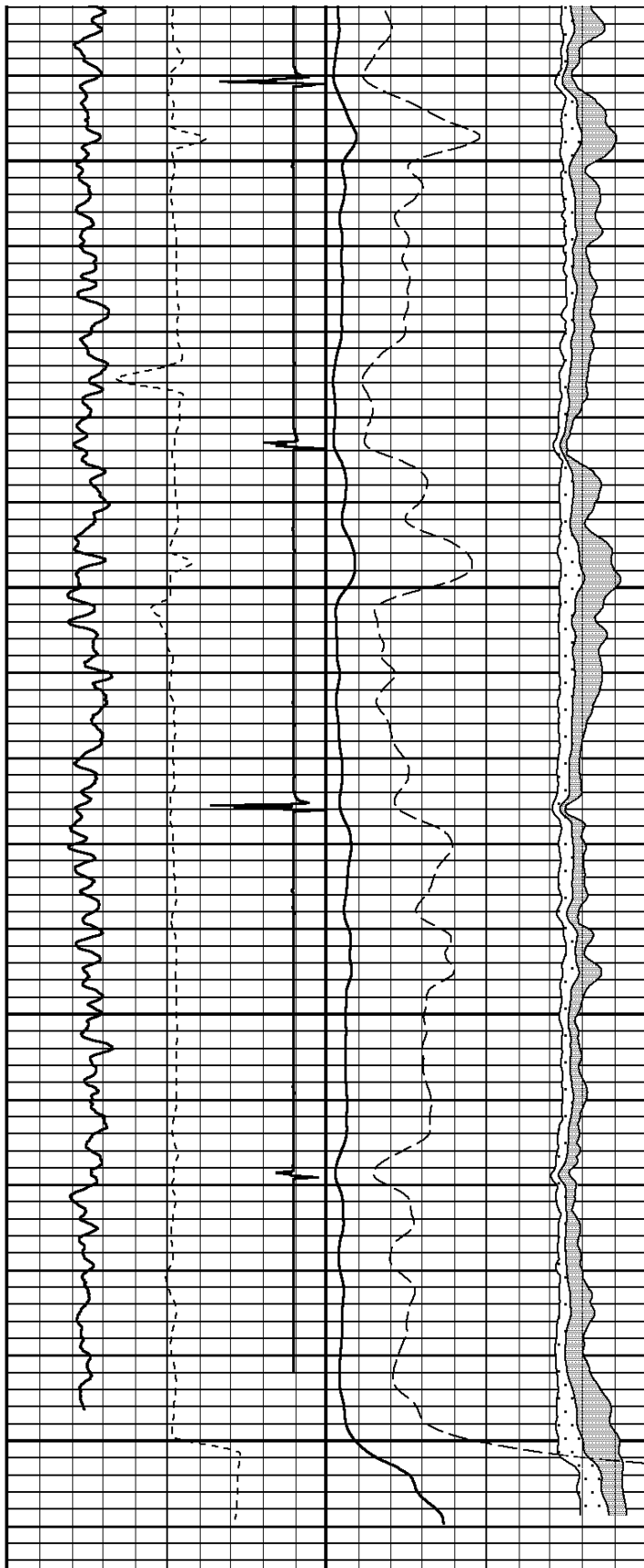
167822 SBTRP

FINISH DEPTH: 1773.7 Feet DIRECTION: UP DATE: 01/28/2011 TIME: 16:13 MODE: RECOMPUTE  
RECOMPUTED DATE: 01/28/2011 TIME: 16:13



1900

2000



Tension		TRAVEL TIME 3FT			MIN ENERGY			VARIABLE DENSITY 3FT			VARIABLE D		VARIABLE E		
0	2000	405	Microseconds	205	-350	Millivolts	150	200	Microseconds	1200	200	1200	0	mv	80
		Gamma Ray			AVG ENERGY						FREE PIPE				
		0	API	150	-350	Millivolts	150				200.00	us			

<b>Collar Locator</b>			<b>MAX ENERGY</b>			<b>FREE PIPE</b>	
-200	Millivolts	22	-350	Millivolts	150	200	1200
			<b>AMPLITUDE 3FT</b>				
			0	Millivolts	100		
			<b>AMPLITUDE 3FT X5</b>				
			0	Millivolts	20		

START DEPTH: 2015.5    DIRECTION: UP    DATE: 01/28/2011    TIME: 16:13    MODE: RECOMPUTE

RECOMPUTED    DATE: 01/28/2011    TIME: 16:13

167822 SBTRP

REPEAT PASS

DEPTH SCALE: 5":100'    VERSION: 143R 2.0b"

09/01/10	14:52	1230.3 F	Ver 143R 2.0b	Job 167753
Sector Bond Before Calibration				
Tool Type	SBT-AA	Serial No	sbta342_7	
Sensor	Description	Standard	Measured	
AMP 3FT	ZERO	1.00	25.40	
	PLUS	71.00	1209.98	
AMP 5FT	ZERO	0.00	23.00	
	PLUS	100.00	1311.64	
1 SECTOR AMP	ZERO	5.00	457.80	
	PLUS	95.00	2566.24	
2 SECTOR AMP	ZERO	5.00	1035.30	
	PLUS	95.00	2388.46	
3 SECTOR AMP	ZERO	5.00	334.60	
	PLUS	95.00	2631.92	
4 SECTOR AMP	ZERO	5.00	169.10	
	PLUS	95.00	2414.90	
5 SECTOR AMP	ZERO	5.00	172.40	

	PLUS	95.00	2389.29
6 SECTOR AMP	ZERO	5.00	195.40
	PLUS	95.00	2497.82
7 SECTOR AMP	ZERO	5.00	135.40
	PLUS	95.00	2837.03
8 SECTOR AMP	ZERO	5.00	958.80
	PLUS	95.00	2383.08

### 1 7/16 Adapter Head

Weight 2.2 LB.  
Length 12 IN.  
Max. Diameter 1.44 IN.

Total Stack Weight 223.0 LBS. in air  
Total Stack Length 27.83 FT.

### Slim Hole Centralizer

Weight 15 lbs  
Length 2.49 FT.  
Max. Diameter 2.750 IN.

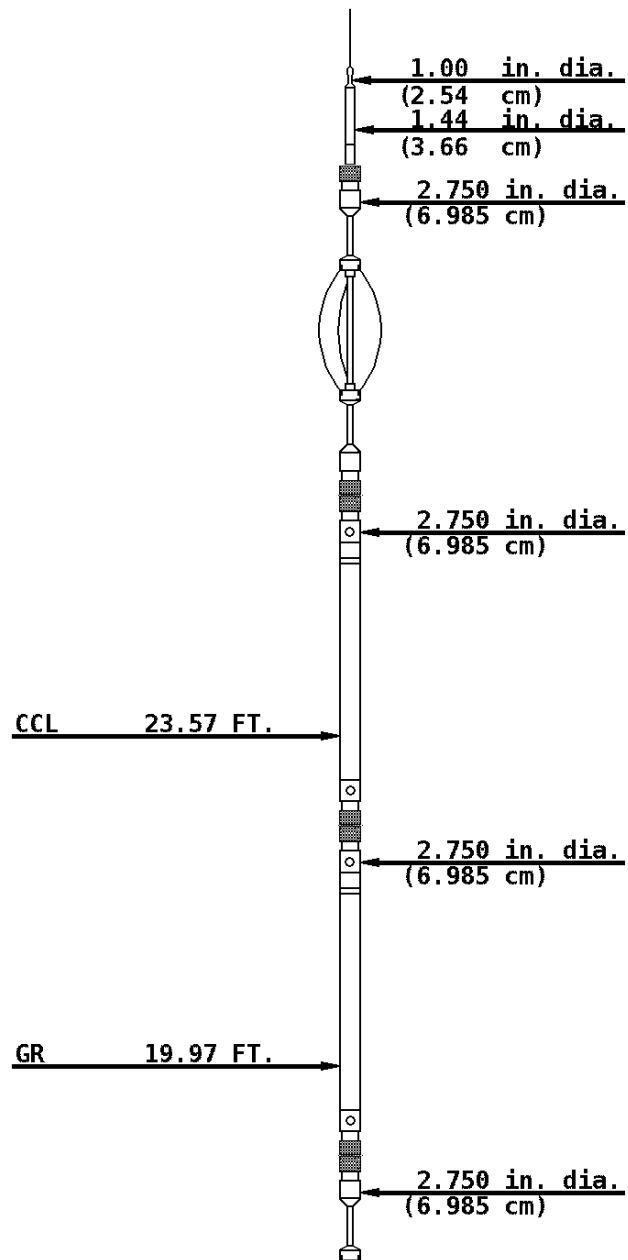
### Collar Locator

Weight 39.8 LBS.  
Length 3.40 FT.  
Max. Diameter 2.75 IN.

### Slim Hole Gamma Ray

Weight 39.8 LBS.  
Length 4.71 FT.  
Max. Diameter 2.750 IN.

### Slim Hole Centralizer



Weight 22 LBS.  
Length 3.08 FT.  
Max. Diameter 2.750 IN.

### Sector Bond

Weight 89.2 LBS.  
Length 10.32 FT.  
Max. Diameter 2.750 IN.

### Slim Hole Centralizer

Weight 15.0 LBS.  
Length 2.82 FT.  
Max. Diameter 2.750 IN.

SBT/CBL Tx 8.75 FT.

SBT Rx 7.77 FT.

3' Rx 7.28 FT.

5' Rx 6.28 FT.

2.750 in. dia.  
(6.985 cm)

2.750 in. dia.  
(6.985 cm)

Tool Zero

COMPANY CHEVRON USA

WELL LN HAGOOD A-15-X

FIELD RANGELY

COUNTY RIO BLANCO

STATE COLORADO



**Weatherford®**