



Company: ExxonMobil Oil Corporation

Well: PCU 296 5A7

Field: Piceance Creek

County: Rio Blanco

State: Colorado

Country: U.S.A

Section: 5 APIN: 051031124300

Township: 2S Rig Name: H & P 321

Range: 96W Rig Type: Flex 4

FL: NAD 27 Colorado State Planes, Northern Zone, US Feet

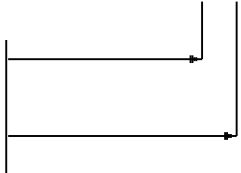
FL1: Latitude: N 39° 54' 43.307" Y: 222311.00 ft

FL2: Longitude: W 108° 11' 52.910" X: 1243259.00 ft

Log Measured From - Drill Floor: 7326.0 ft

Ground Level: 7296.0 ft

Permanent Datum - Mean Sea Level



Acquisition Dates: 16 Feb 11 to 18 Feb 11 Other Services:

Print Interval: 2/16/2011 10:00:00 PM to 2/18/2011 5:34:33 PM Directional Drilling

Index Types: Time

Index Scales: 2" / 3600 secs

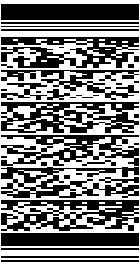
Depth Source: Driller's Depth

Depth Sensor: 3rd Party Depth

Conveyance: Drill Pipe

Print Type: Final

Spud Date: 24-Nov-2009



Disclaimer

THE USE OF AND RELIANCE UPON THIS RECORDED-DATA BY THE HEREIN NAMED COMPANY (AND ANY OF ITS AFFILIATES, PARTNERS, REPRESENTATIVES, AGENTS, CONSULTANTS AND EMPLOYEES) IS SUBJECT TO THE TERMS AND CONDITIONS AGREED UPON BETWEEN SCHLUMBERGER AND THE COMPANY, INCLUDING: (a) RESTRICTIONS ON USE OF THE RECORDED-DATA; (b) DISCLAIMERS AND WAIVERS OF WARRANTIES AND REPRESENTATIONS REGARDING COMPANY'S USE AND RELIANCE UPON THE RECORDED-DATA; AND (c) CUSTOMER'S FULL AND SOLE RESPONSIBILITY FOR ANY INFERENCE DRAWN OR DECISION MADE IN CONNECTION WITH THE USE OF THIS RECORDED-DATA.

Content

- 1. Header
- 2. Disclaimer
- 3. Contents
- 4. Run 1
 - 4.1 Integration Summary
 - 4.2 Software Version
 - 4.3 Composite Summary
 - 4.4 Log (PERFORM - Drilling Mechanics)
 - 4.5 Parameter Listing
- 5. Tail

Run 1

Integration Summary	
<p>Integration Summary</p> <p>The integration of the three models (Cognitive-Behavioral, Psychodynamic, and Humanistic) provides a comprehensive framework for understanding and treating mental health issues. This summary outlines the key components and their interrelationships.</p> <p>Key Components:</p> <ul style="list-style-type: none"> Cognitive-Behavioral Model: Focuses on the relationship between thoughts, feelings, and behaviors. It emphasizes the role of cognitive distortions and learned behaviors in the development of psychological disorders. Psychodynamic Model: Emphasizes the influence of unconscious processes and early childhood experiences on current behavior. It explores the role of the ego, superego, and id in psychological functioning. Humanistic Model: Focuses on the individual's subjective experience and the potential for personal growth and self-actualization. It emphasizes the importance of a supportive therapeutic environment. <p>Integration:</p> <p>The integration of these models allows for a more holistic understanding of the individual. For example, a therapist might use cognitive-behavioral techniques to address current thought patterns while also exploring the underlying psychological conflicts from a psychodynamic perspective. Similarly, a humanistic approach might focus on the client's self-concept and goals, while also addressing cognitive distortions and behavioral patterns.</p>	

Output Channel(s)	Output Description	Input Parameter	Output Value	Unit
-------------------	--------------------	-----------------	--------------	------

Acquisition System	Version
--------------------	---------

MaxWell	2.0.6803.0

Tool Elements	Description	Software version	Firmware version
DRILLING SURFACE	DRILLING SURFACE	2.0.6803.1108	

Run Name	Pass Objective	Direction	Start	Stop	Acquisition Start Date	Acquisition Start Time
----------	----------------	-----------	-------	------	------------------------	------------------------

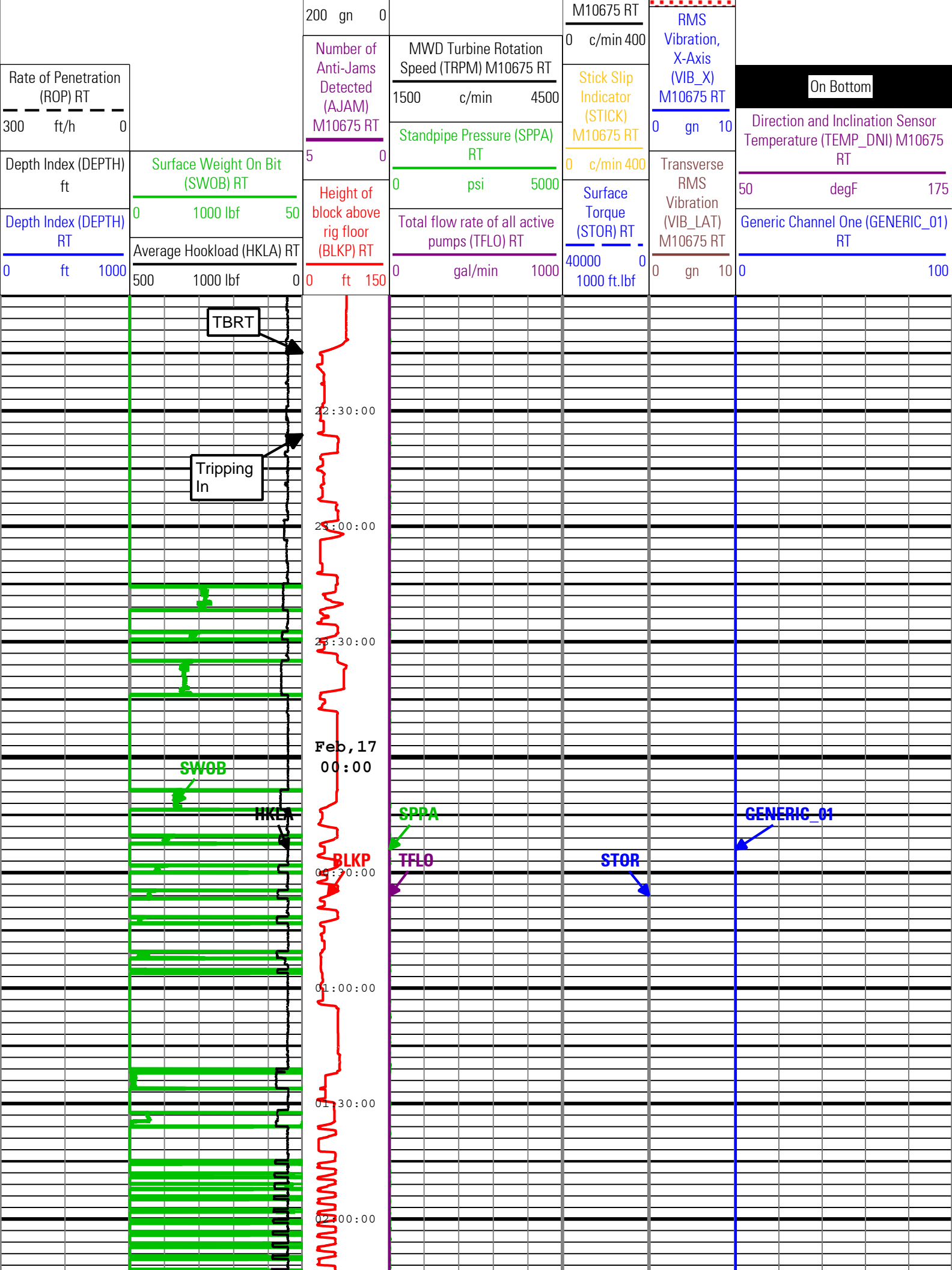
Run 1	TimeLogicalAcq	Down	16-Feb-2011 22:53:20	18-Feb-2011 17:24:20	16-Feb-2011	20:53:30
-------	----------------	------	-------------------------	-------------------------	-------------	----------

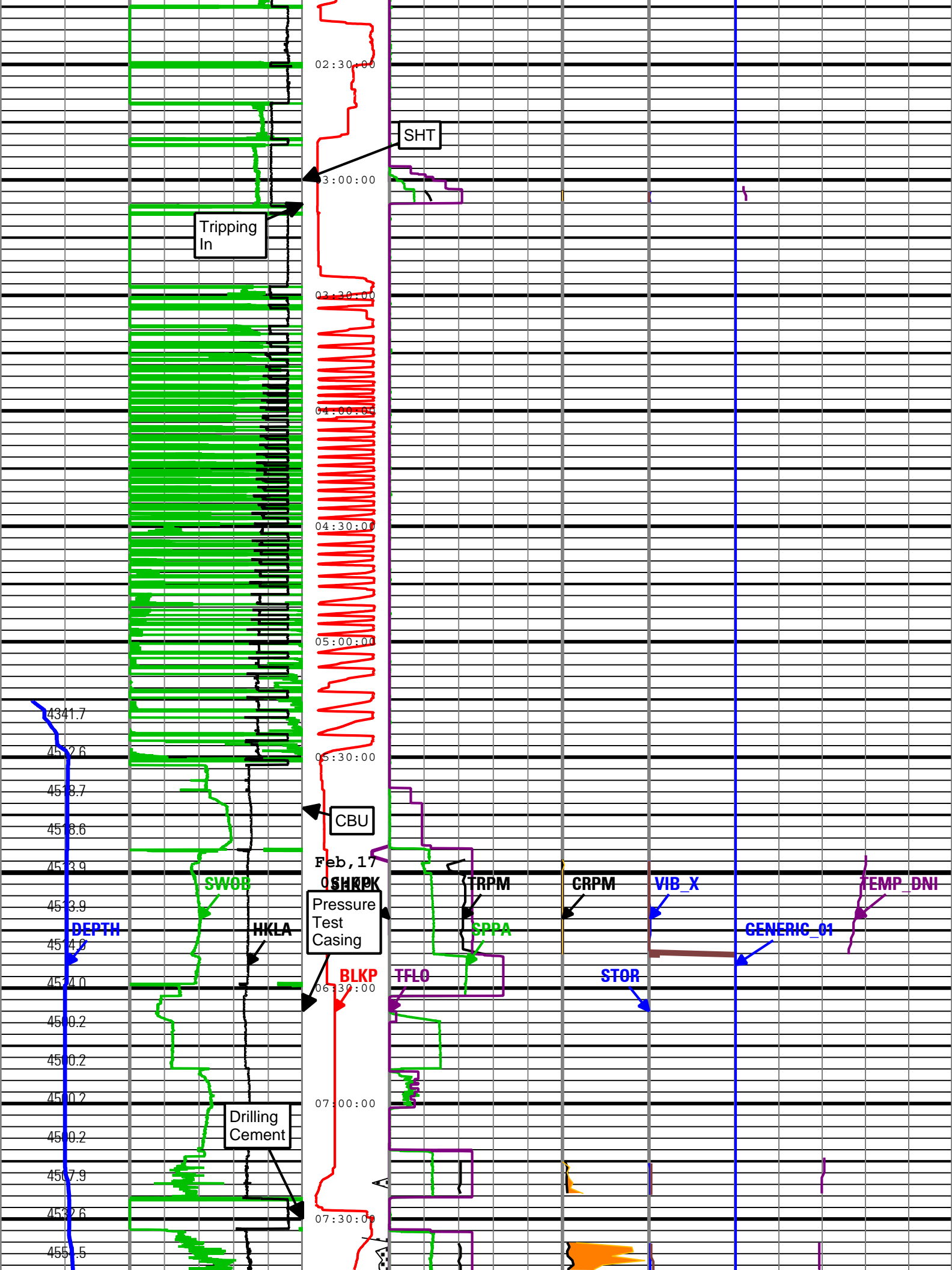
Run 1: TimeLogicalAcq E6970C11-7291-4301-BG2F-1F79B828088E

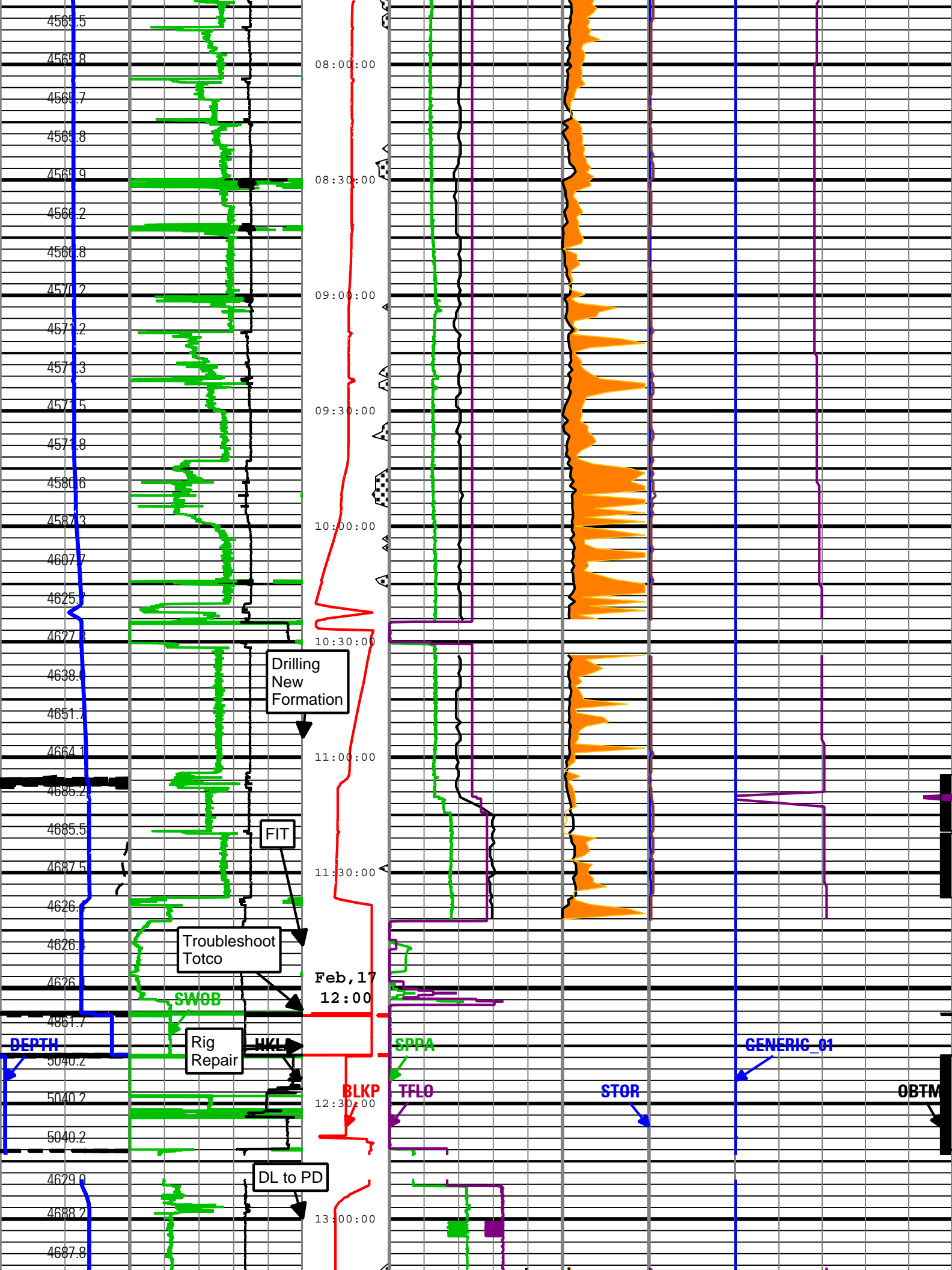
Description: TeleScope Drilling Mechanics Time R1 Format: Log (PERFORM - Drilling Mechanics) Index Scale: 2 in per 3600 s Index Type: Time Creation Date: 18-Feb-2011 21:56:57

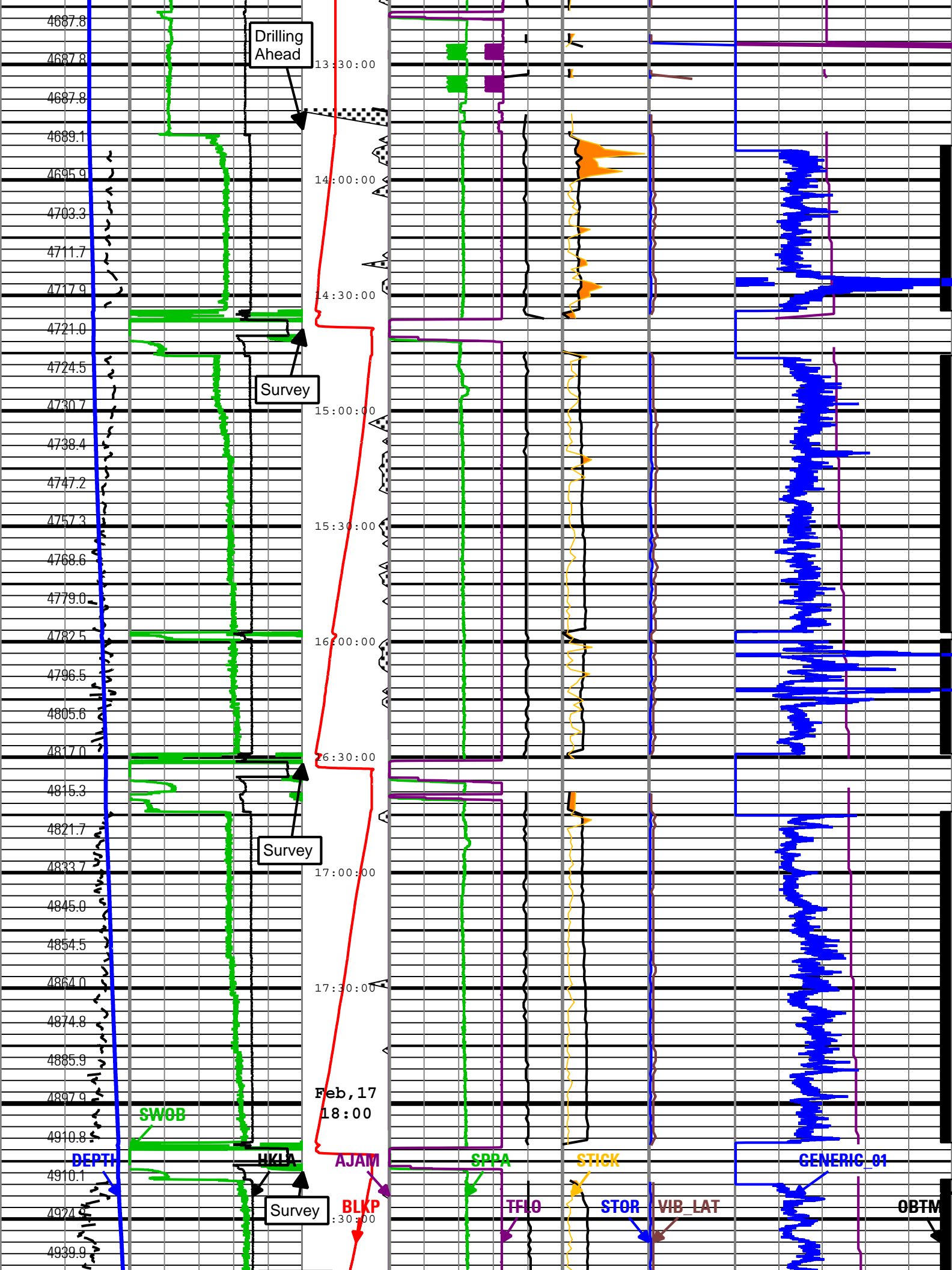
BLKP	DRILLING_SURFACE	ACQ - RT
CBPM	M10675:M10675	ACQ - RT

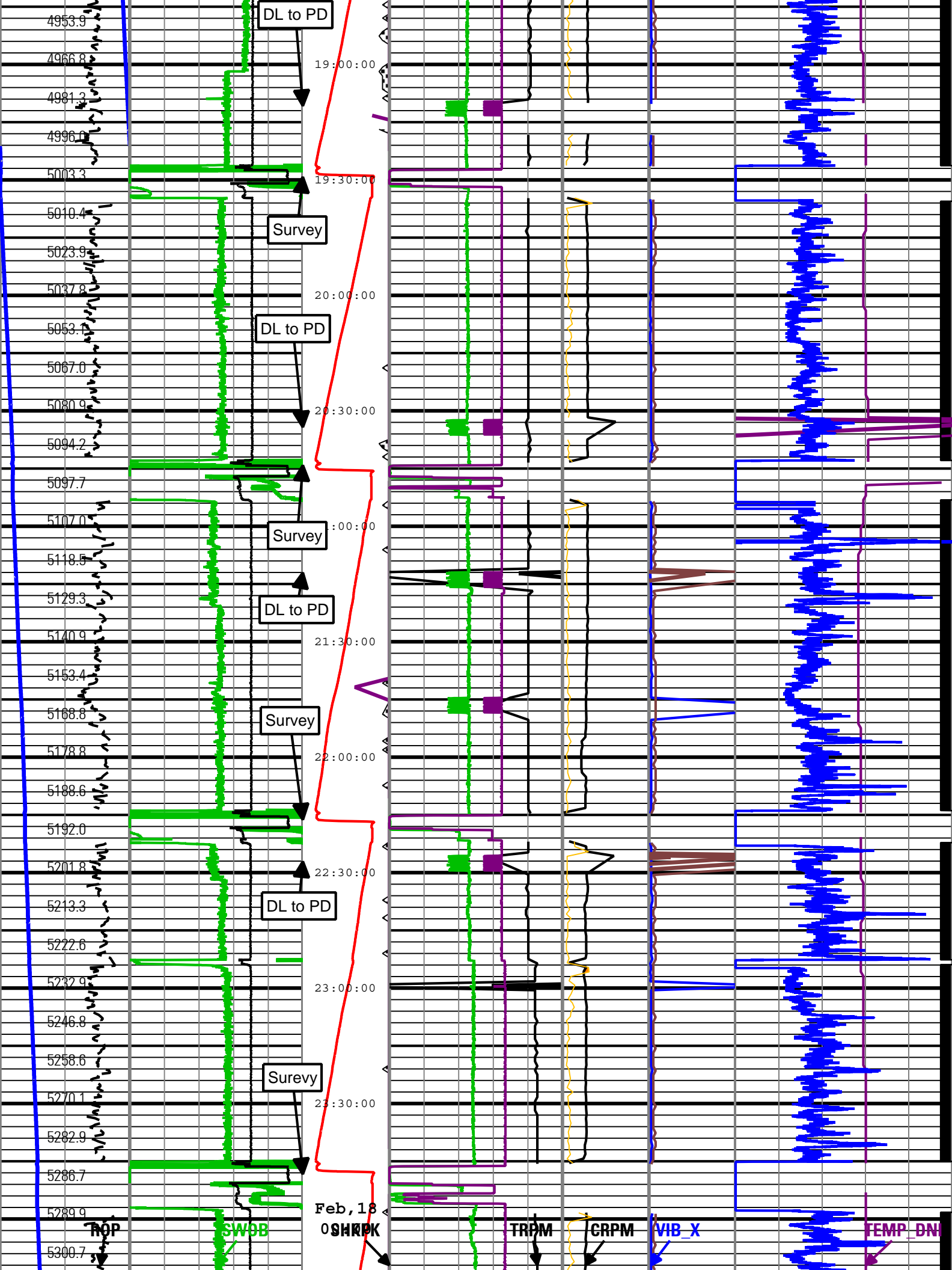
[illegible]

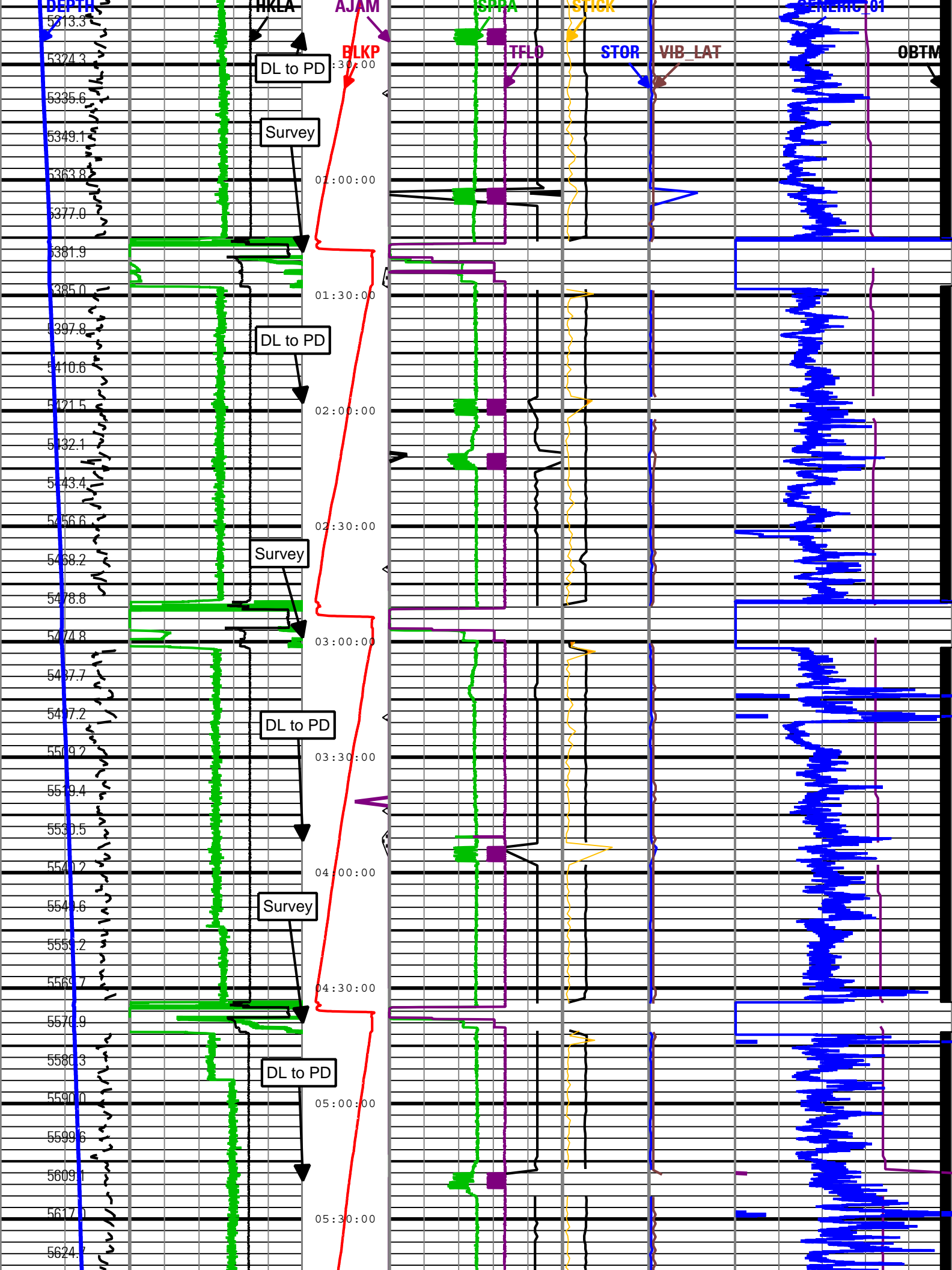


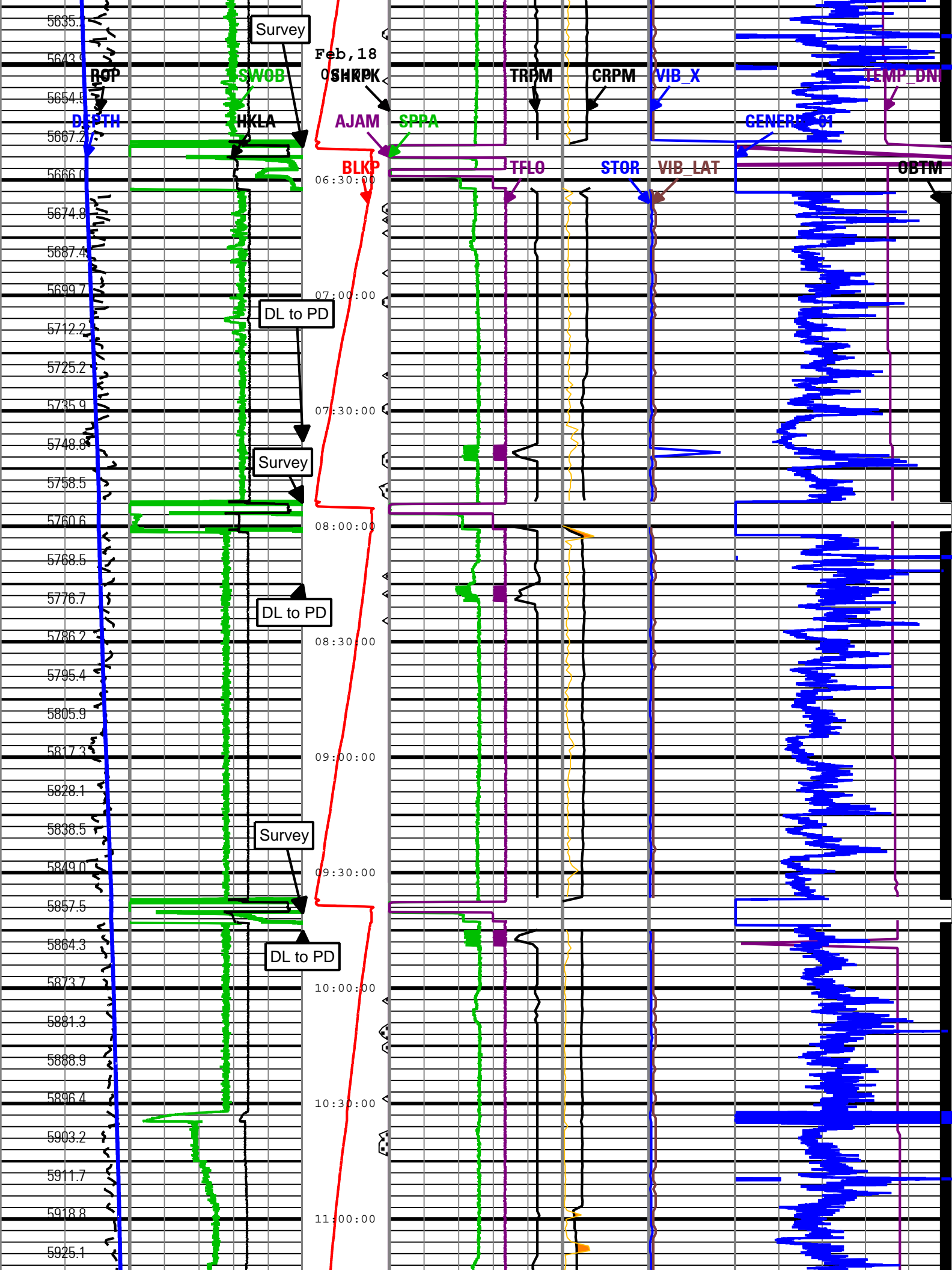


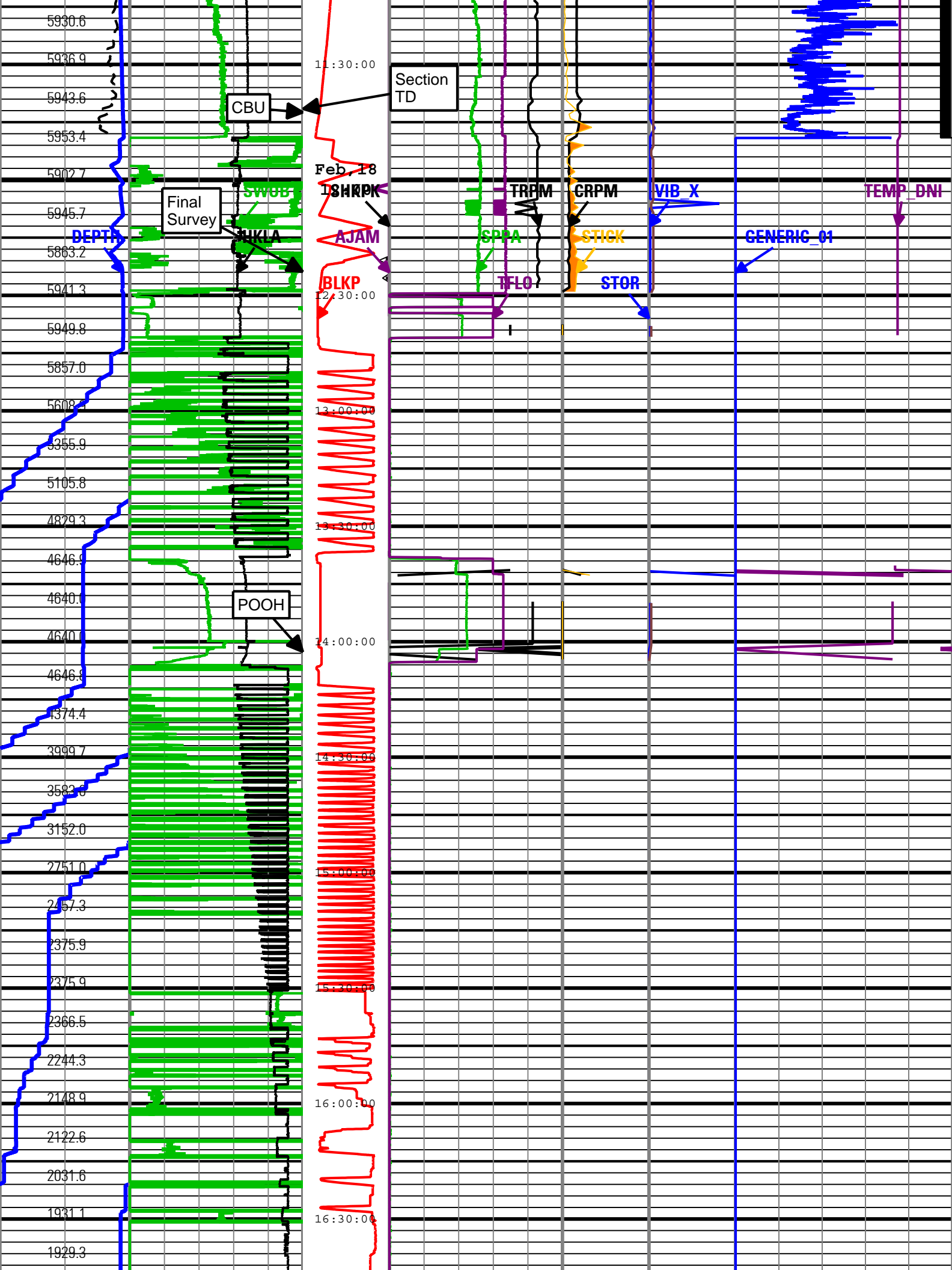


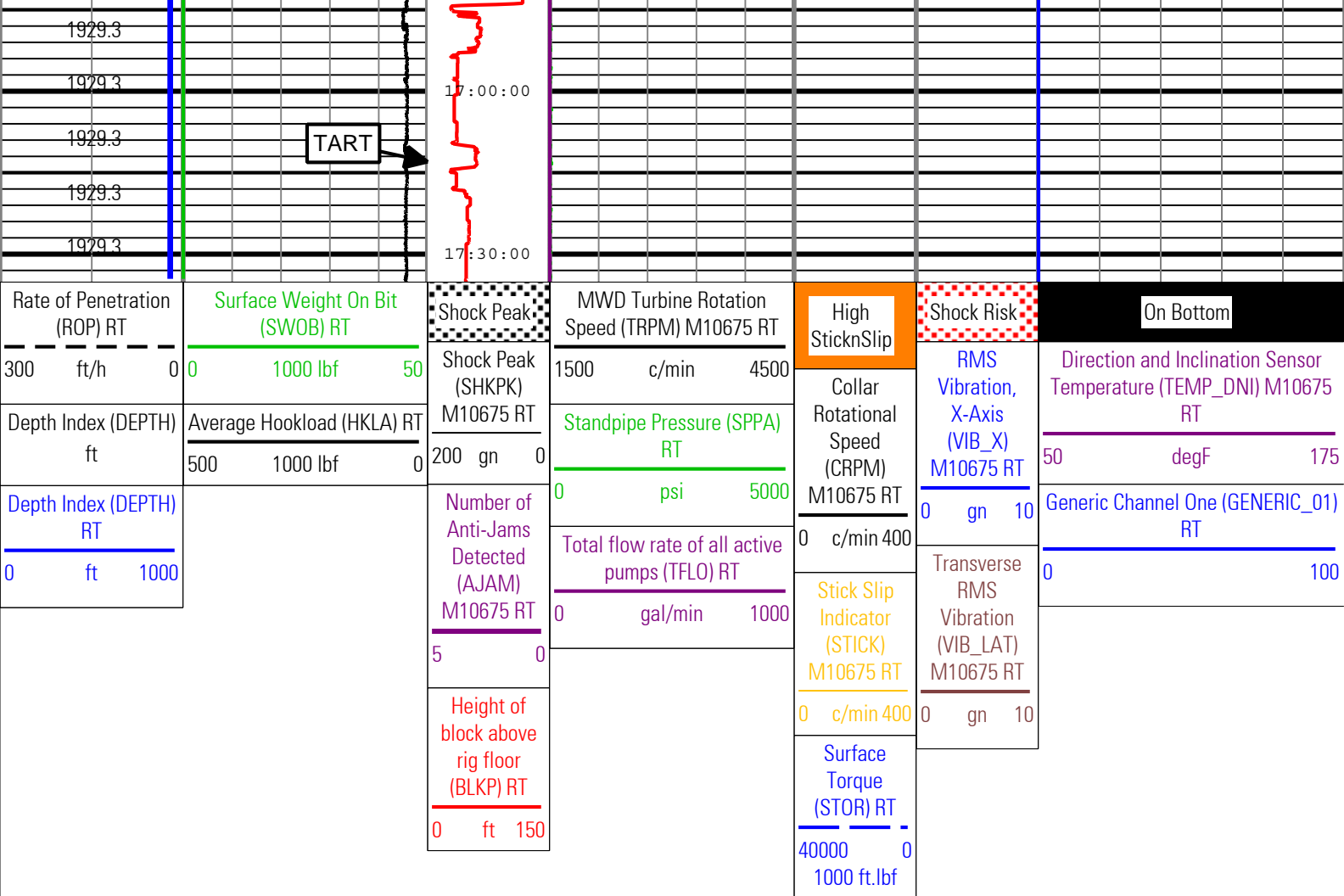












Description: TeleScope Drilling Mechanics Time RT Format: Log (PERFORM - Drilling Mechanics) Index Scale: 2 in per 3600 s Index Type: Time Creation Date: 18-Feb-2011 21:56:57

Channel Processing Parameters				
Parameter	Description	ToolPath	Value	Unit
DEPTH_SEL	Depth Selection Parameter	DNMSESSION	Driller's Depth	

Tool Control Parameters				
Parameter	Description	ToolPath	Value	Unit
OFFBTM_TH	Threshold for deciding whether the bit is off bottom	DnMWorkflow	0.5	ft

Company:	ExxonMobil Oil Corporation
Well:	PCU 296 5A7
Field:	Piceance Creek
County:	Rio Blanco
State:	Colorado
Country:	U.S.A

