

PERFORM - Drilling Mechanics

2 in / hr Time Based

Real Time Log



Company: ExxonMobil Oil Corporation

Well: PCU 296 5A9

Field: Piceance Creek

County: Rio Blanco

State: Colorado

Country: United States

Section: 05

APIN: 051031124100

Township: 2S

Rig Name: H&P 321

Range: 96W

Rig Type: Land Rig Flex 4

FL: NAD 27 Colorado State Planes, Northern Zone, US Feet

FL1: Latitude: 39° 54' 43.019" Y: 222282.00 ft

FL2: Longitude: 108° 11' 52.962" X: 1243254.00 ft

Log Measured From - Drill Floor: 7326.0 ft

Ground Level: 7296.0 ft



Acquisition Dates: 26 Jan 11 to 28 Jan 11

Other Services:

Print Interval: 1/26/2011 8:00:00 PM to 1/28/2011 10:57:15 AM

Directional Drilling

Index Types: Time

Index Scales: 2" / 3600 secs

Depth Source: Driller's Depth

Depth Sensor: 3rd Party Depth

Conveyance: Drill Pipe

Print Type: Final

Spud Date: 05-Dec-2009

Disclaimer

THE USE OF AND RELIANCE UPON THIS RECORDED-DATA BY THE HEREIN NAMED COMPANY (AND ANY OF ITS AFFILIATES, PARTNERS, REPRESENTATIVES, AGENTS, CONSULTANTS AND EMPLOYEES) IS SUBJECT TO THE TERMS AND CONDITIONS AGREED UPON BETWEEN SCHLUMBERGER AND THE COMPANY, INCLUDING: (a) RESTRICTIONS ON USE OF THE RECORDED-DATA; (b) DISCLAIMERS AND WAIVERS OF WARRANTIES AND REPRESENTATIONS REGARDING COMPANY'S USE AND RELIANCE UPON THE RECORDED-DATA; AND (c) CUSTOMER'S FULL AND SOLE RESPONSIBILITY FOR ANY INFERENCE DRAWN OR DECISION MADE IN CONNECTION WITH THE USE OF THIS RECORDED-DATA.

Content

- Header
- Disclaimer
- Contents
- Run 1
 - Integration Summary
 - Software Version
 - Composite Summary
 - Log (PERFORM - Drilling Mechanics)
 - Parameter Listing
- Tail

Run 1

Integration Summary	
<p>Integration Summary</p> <p>The integration of the three models (Cognitive-Behavioral, Psychodynamic, and Humanistic) provides a comprehensive framework for understanding and treating mental health issues. This summary outlines the key components and their interrelationships.</p> <p>Key Components:</p> <ul style="list-style-type: none"> Cognitive-Behavioral Model: Focuses on the relationship between thoughts, feelings, and behaviors. It emphasizes the role of cognitive distortions and learned behaviors in the development of psychological disorders. Psychodynamic Model: Emphasizes the influence of unconscious processes and early childhood experiences on current behavior. It explores the role of the ego, superego, and id in psychological functioning. Humanistic Model: Focuses on the individual's subjective experience and the potential for personal growth and self-actualization. It emphasizes the importance of a supportive therapeutic environment. <p>Integration:</p> <p>The integration of these models allows for a more holistic understanding of the client. For example, a client's current behavior (Cognitive-Behavioral) can be understood in the context of their unconscious conflicts (Psychodynamic) and their need for self-actualization (Humanistic). This integrated approach informs the selection of appropriate interventions, such as cognitive-behavioral therapy, psychodynamic therapy, and humanistic therapy, which can be tailored to the client's unique needs and experiences.</p>	

Output Channel(s)	Output Description	Input Parameter	Output Value	Unit
-------------------	--------------------	-----------------	--------------	------

Acquisition System	Version
--------------------	---------

MaxWell	2.0.6803.0
---------	------------

Tool Elements	Description	Software version	Firmware version
DRILLING SURFACE	DRILLING SURFACE	2.0.6803.1108	

Run Name	Pass Objective	Direction	Start	Stop	Acquisition Start Date	Acquisition Start Time
----------	----------------	-----------	-------	------	------------------------	------------------------

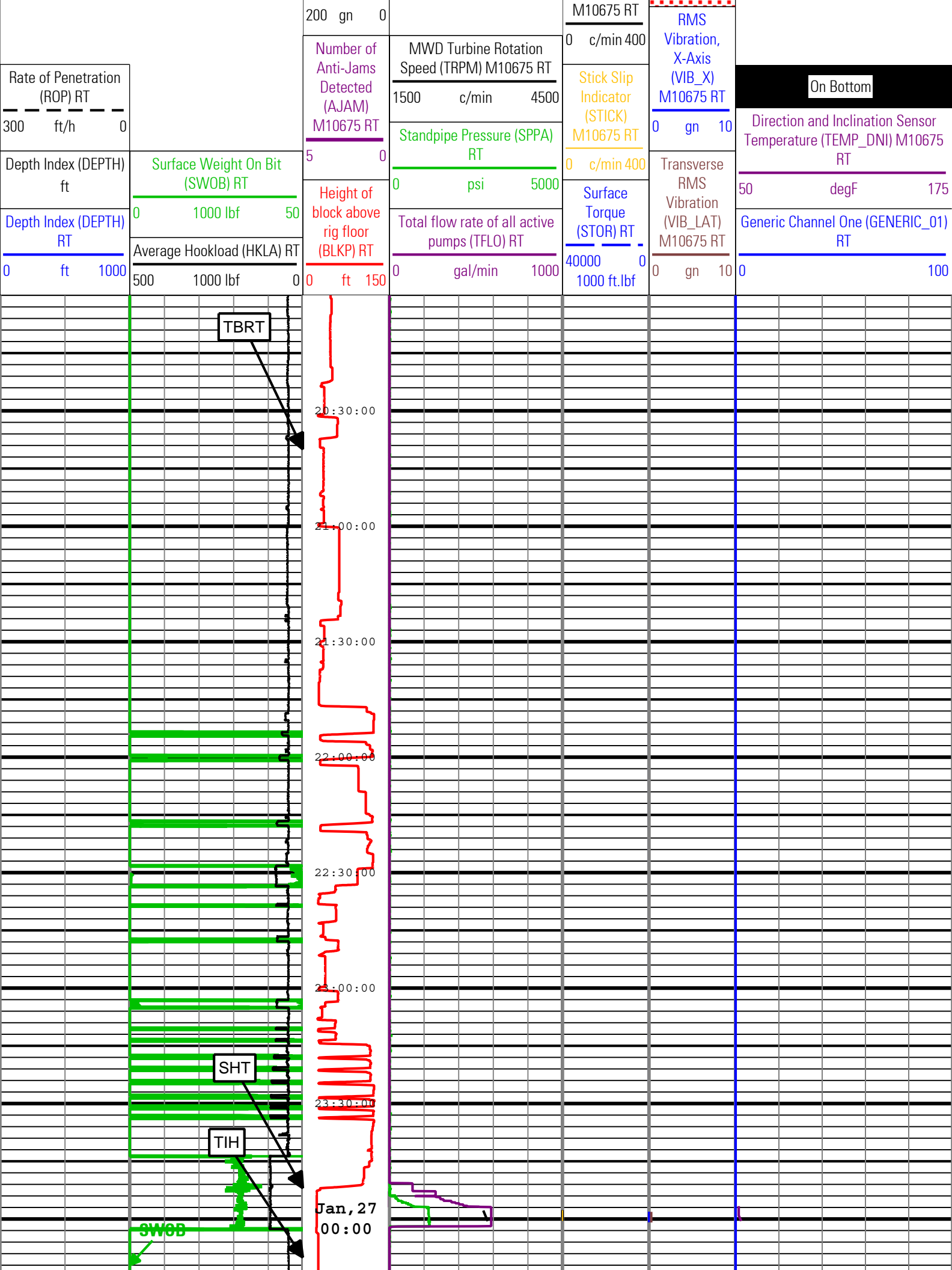
Run 1	TimeLogicalAcq	Down	26-Jan-2011 18:27:52	28-Jan-2011 18:57:15	26-Jan-2011	19:27:52
-------	----------------	------	-------------------------	-------------------------	-------------	----------

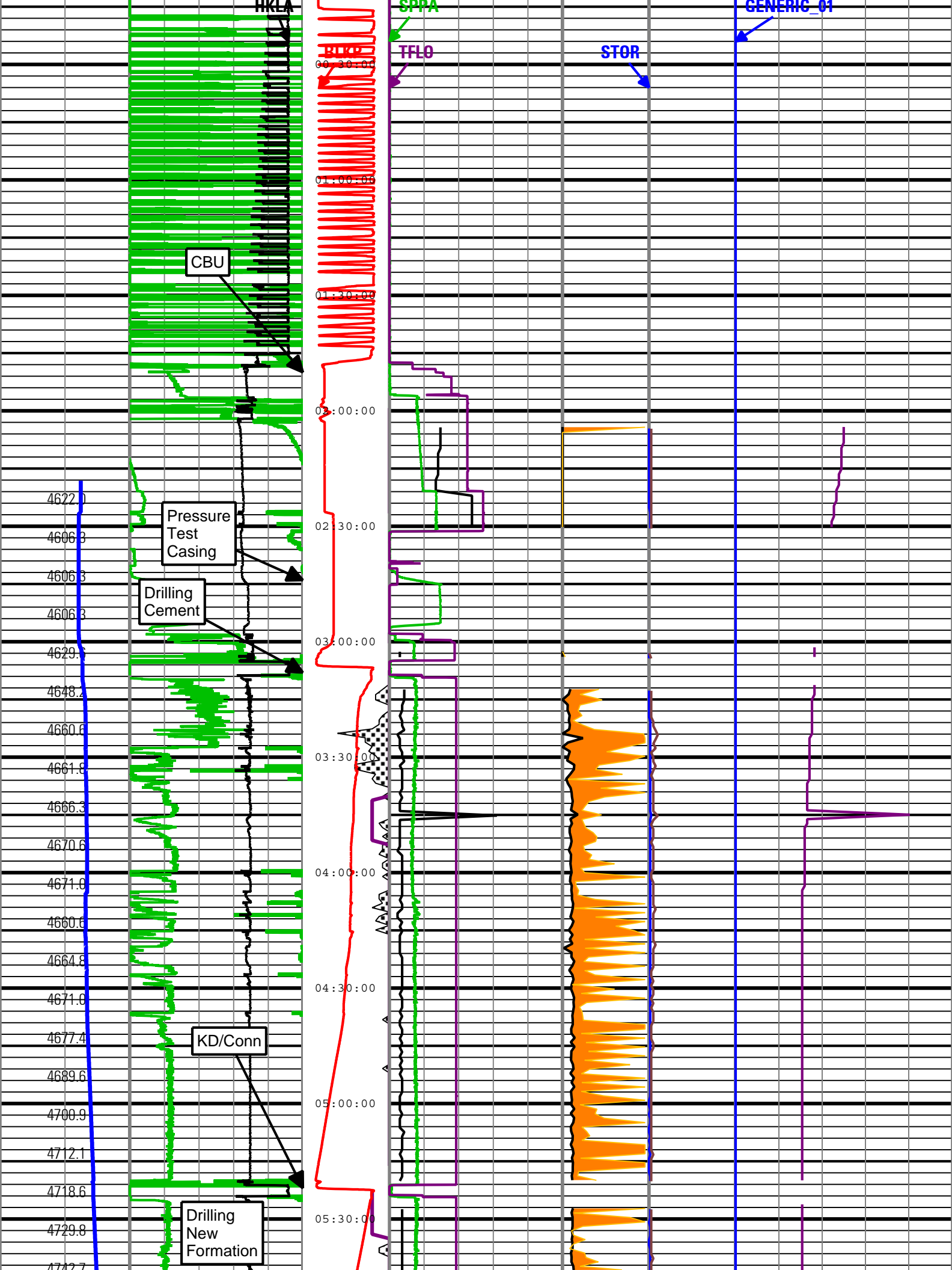
Run 1: TimeLogicalAcq 6D4289F6-A85B-4EE1-B4CF-C72640519A62

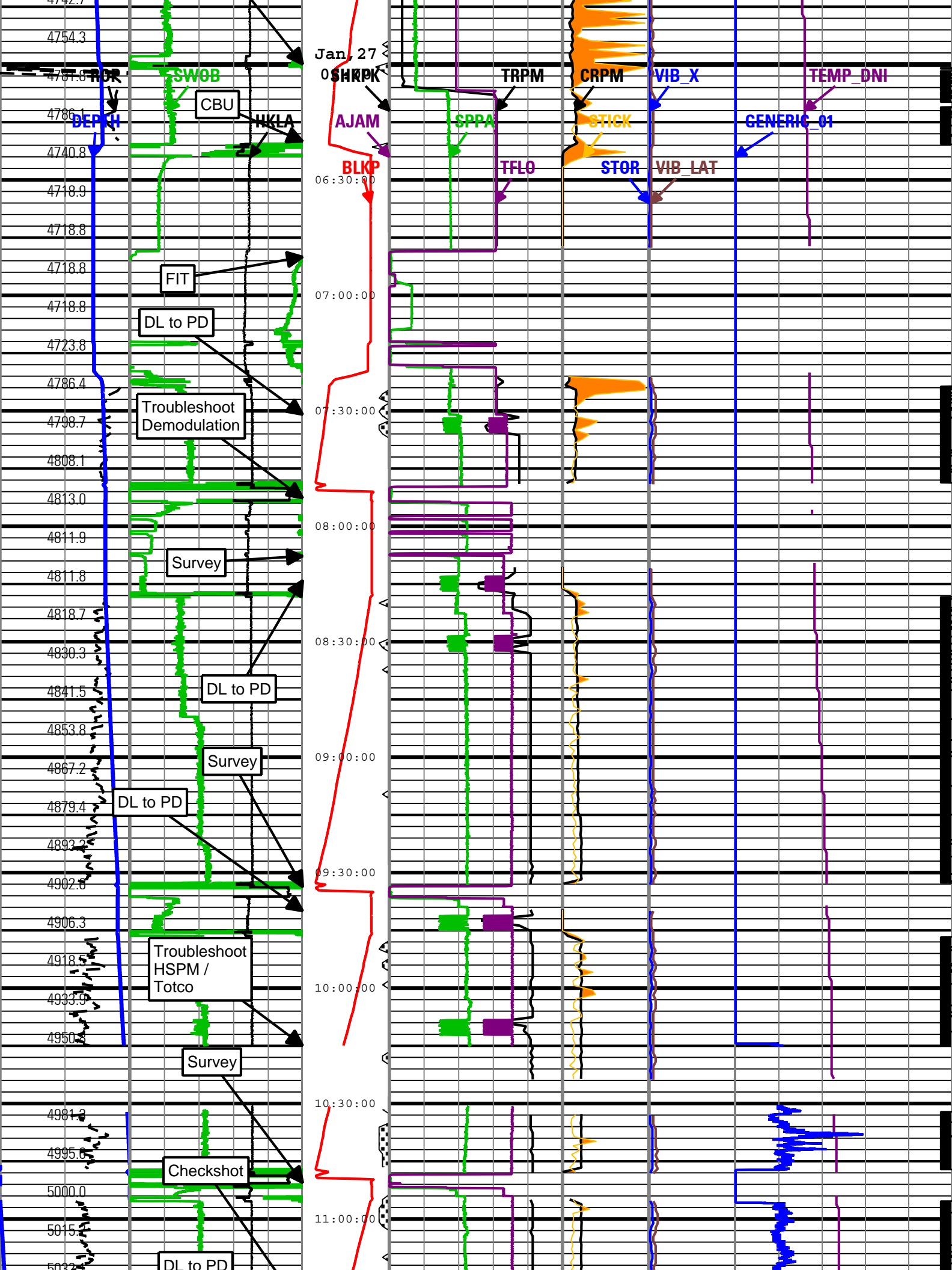
Run 1: TimeLogicalAcq 6D4289F6-A85B-4EE1-B4CF-C72640519A82

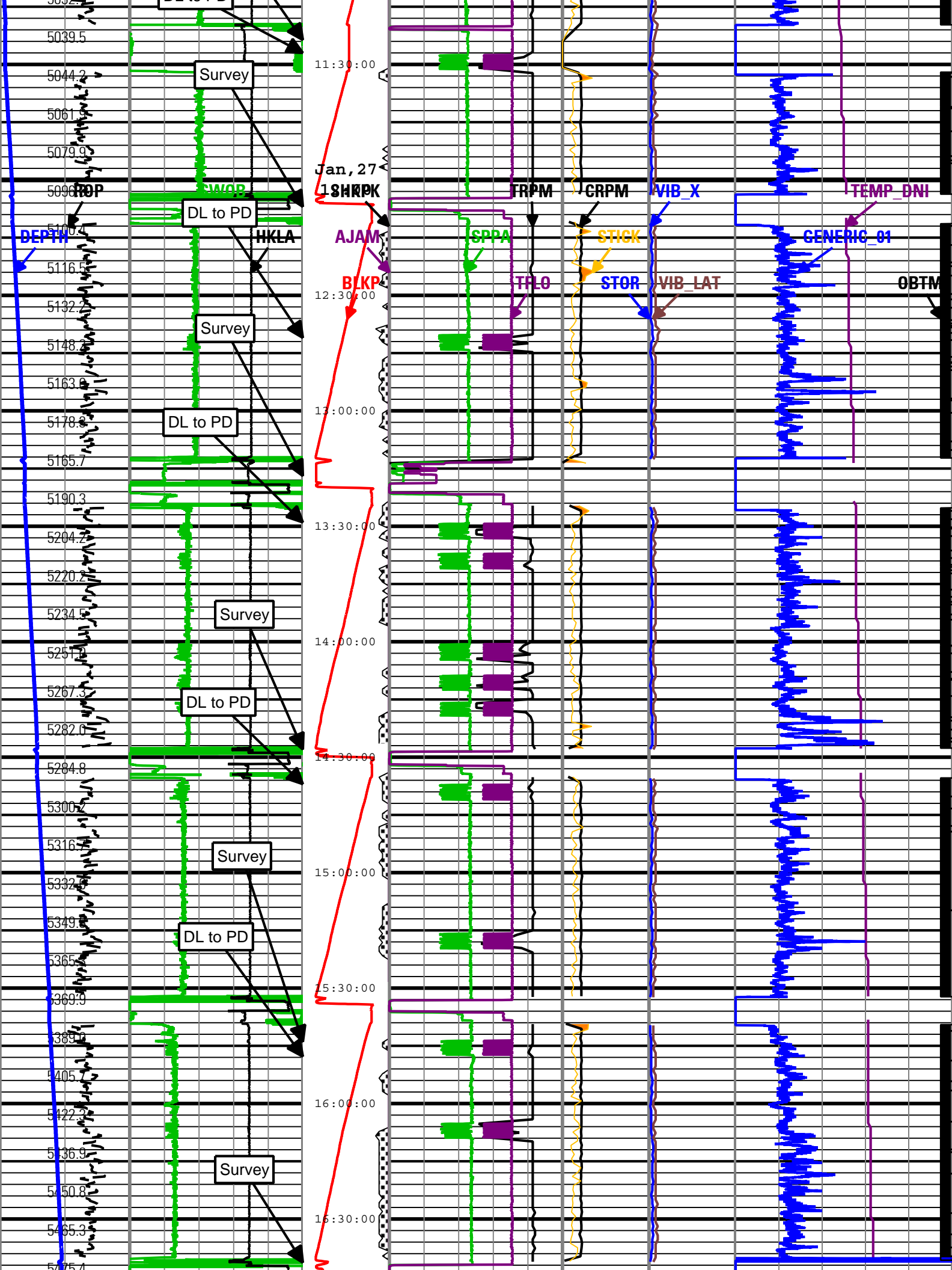
AJAM	M10675:M10675	ACQ - RT
------	---------------	----------

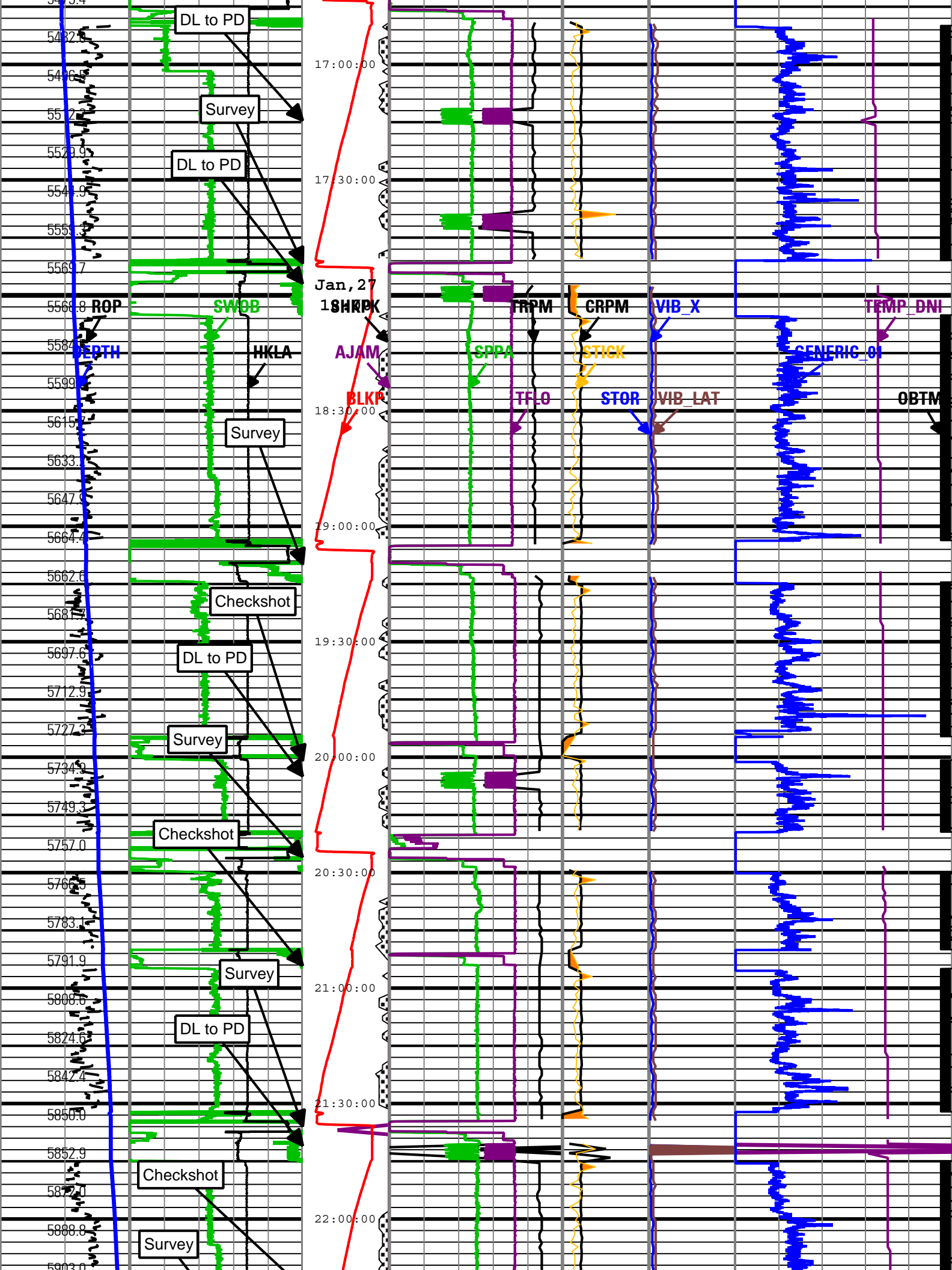
	Shock Peak Shock Peak (SHKPK) M10675 RT	<div style="background-color: orange; padding: 2px; margin-bottom: 5px;">High SticknSlip</div> <div style="padding: 2px;">Collar Rotational Speed (CRPM)</div>	<div style="border: 1px dashed red; background-color: #f8d7da; padding: 2px; width: fit-content;">Shock Risk</div>
--	--	--	--

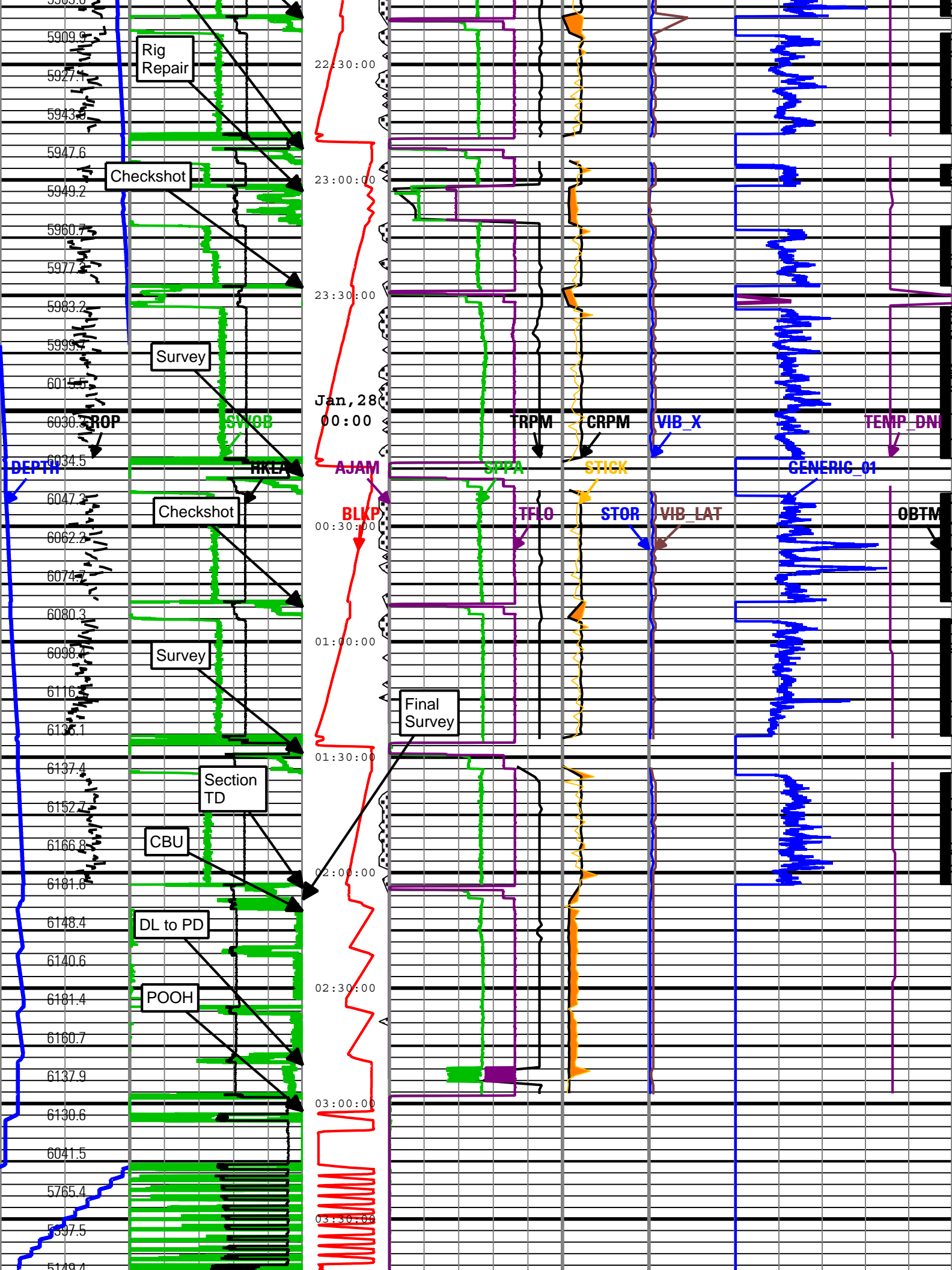


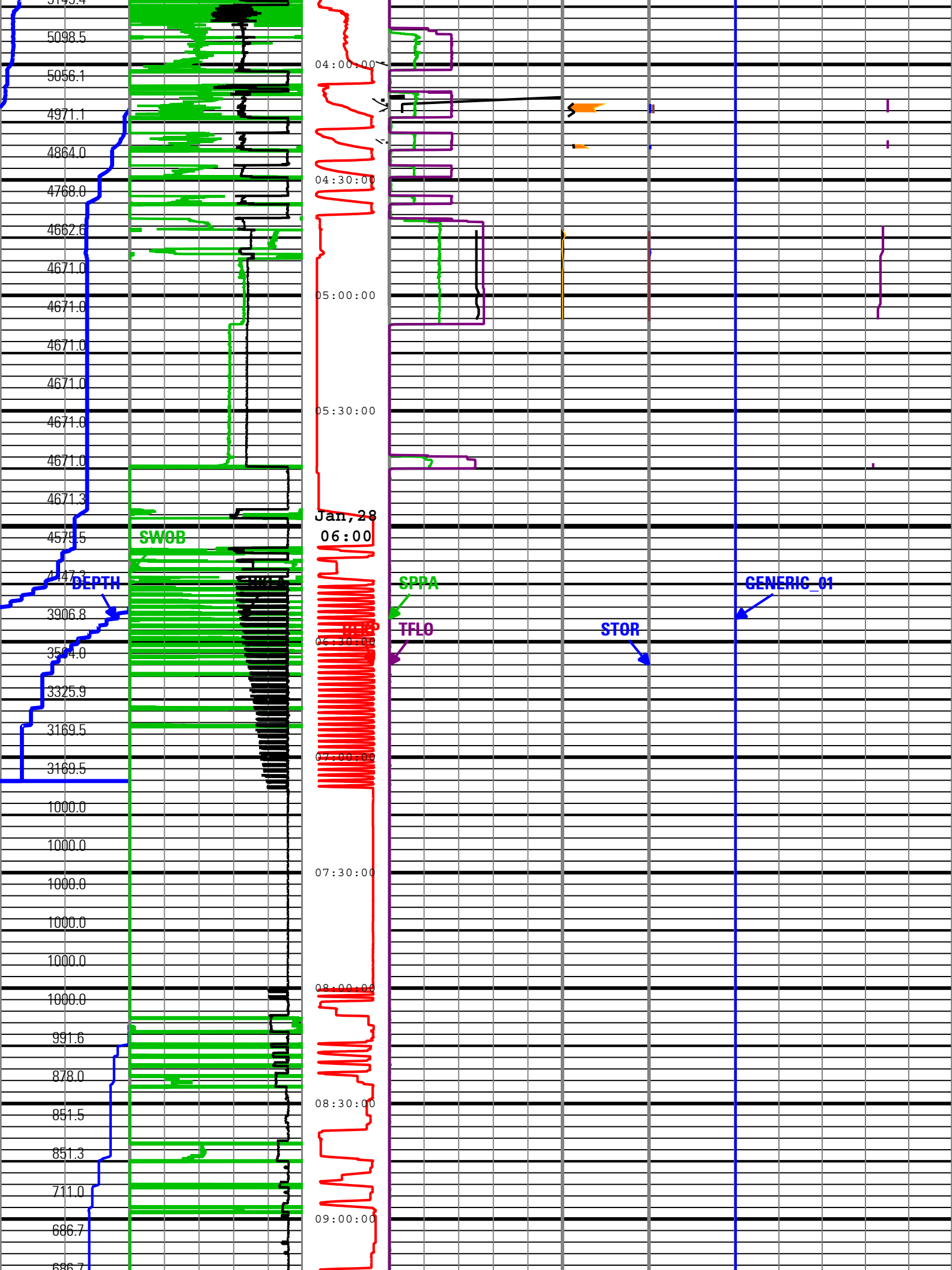


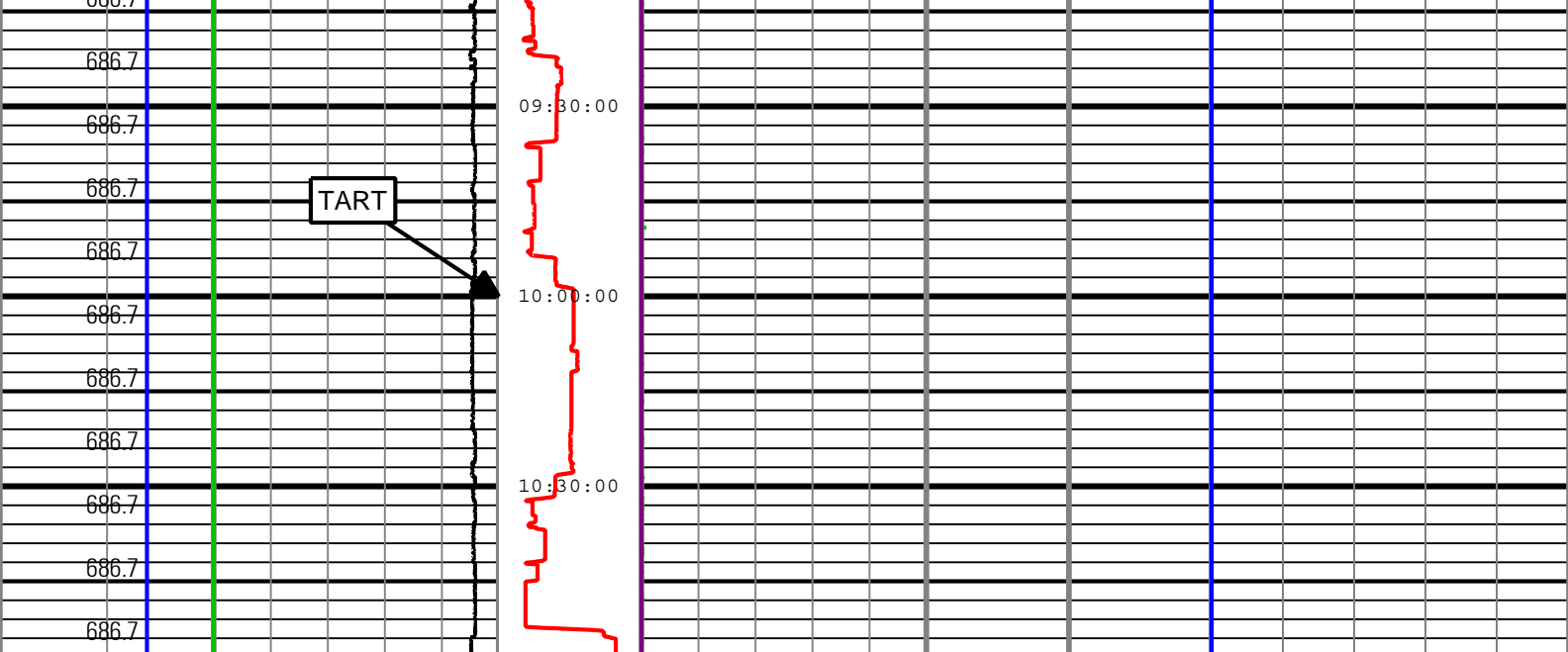












Rate of Penetration (ROP) RT 300 ft/h 0	Surface Weight On Bit (SWOB) RT 0 1000 lbf 50	Shock Peak Shock Peak (SHKPK) M10675 RT 200 gn 0	MWD Turbine Rotation Speed (TRPM) M10675 RT 1500 c/min 4500	High SticknSlip Collar Rotational Speed (CRPM) M10675 RT 0 c/min 400	Shock Risk RMS Vibration, X-Axis (VIB_X) M10675 RT 0 gn 10	On Bottom Direction and Inclination Sensor Temperature (TEMP_DNI) M10675 RT 50 degF 175
Depth Index (DEPTH) ft 500 1000 lbf 0	Average Hookload (HKLA) RT 500 1000 lbf 0	Number of Anti-Jams Detected (AJAM) M10675 RT 5 0	Standpipe Pressure (SPPA) RT 0 psi 5000	Stick Slip Indicator (STICK) M10675 RT 0 c/min 400	Transverse RMS Vibration (VIB_LAT) M10675 RT 0 gn 10	Generic Channel One (GENERIC_01) RT 0 100
Depth Index (DEPTH) RT 0 ft 1000		Height of block above rig floor (BLKP) RT 0 ft 150	Total flow rate of all active pumps (TFLO) RT 0 gal/min 1000	Surface Torque (STOR) RT 40000 0 1000 ft.lbf		

Description: TeleScope Drilling Mechanics Time RT Format: Log (PERFORM - Drilling Mechanics) Index Scale: 2 in per 3600 s Index Type: Time Creation Date: 28-Jan-2011 14:08:52

Channel Processing Parameters				
Parameter	Description	ToolPath	Value	Unit
DEPTH_SEL	Depth Selection Parameter	DNMSESSION	Driller's Depth	

Tool Control Parameters	
Company:	ExxonMobil Oil Corporation
Well:	PCU 296 5A9
Field:	Piceance Creek
County:	Rio Blanco
State:	Colorado
Country:	United States

