

SINGLE INDUCTION LOG

Company	Pioneer Natural Resources	Company	Pioneer Natural Resources
Well	Djembe 21-12	Well	Djembe 21-12
Field	Purgatoire River	Field	Purgatoire River
County	Las Animas	County	Las Animas
State	Colorado	State	Colorado
Location:	APL # : 05 071 09814 00	Other Services	CDNL
SEC 12 TWP 33S RGE 68W	788' FNL & 2203' FWL	Elevation	
Permanent Datum	Ground Level	Elevation	7717'
Log Measured From	Kelly Bushing 4' AGL	K.B. 7721'	
Drilling Measured From	Kelly Bushing	D.F. -----	
		G.L. 7717'	
Date	8-26-11		
Run Number	One		
Depth Driller	2350'		
Depth Logger	2350'		
Bottom Logged Interval	2348'		
Top Log Interval	Surface Casing		
Casing Driller	8 5/8" @ 437'		
Casing Logger	438'		
Bit Size	7 7/8"		
Type Fluid in Hole	Water		
Density / Viscosity	///		
pH / Fluid Loss	///		
Source of Sample	///		
Rm @ Meas. Temp	///		
Rmf @ Meas. Temp	///		
Rmc @ Meas. Temp	///		
Source of Rmf / Rmc	///		
Rm @ BHT	///		
Time Circulation Stopped	1:00 P.M.		
Time Logger on Bottom	5:15 P.M.		
Maximum Recorded Temperature	96 DEG F		
Equipment Number	T590		
Location	Trinidad		
Recorded By	C. Sisneros		
Witnessed By	Mr. Derrick Berry		

<<< Fold Here >>>

All interpretations are opinions based on inferences from electrical or other measurements and we cannot and do not guarantee the accuracy or correctness of any interpretation, and we shall not, except in the case of gross or willful negligence on our part, be liable or responsible for any loss, costs, damages, or expenses incurred or sustained by anyone resulting from any interpretation made by any of our officers, agents or employees. These interpretations are also subject to our general terms and conditions set out in our current Price Schedule.

Comments

Directions:

Rancho Escondido, at dumpsters go left , go thru yellow pole gate, go to top of hill, stay right, first right, drive thru Montoya 44-1 location, take left down hill, @ Y go left, 2nd left, dead end on location.

Database File: djembe.db
Dataset Pathname: pass2.1
Presentation Format: iel
Dataset Creation: Fri Aug 26 18:34:16 2011 by Calc Open-Cased 110302
Charted by: Depth in Feet scaled 1:240

0	GR (GAPI)	200
-200	SP (mV)	0

0.2	DIR (Ohm-m)	2000
0.2	SN (Ohm-m)	2000

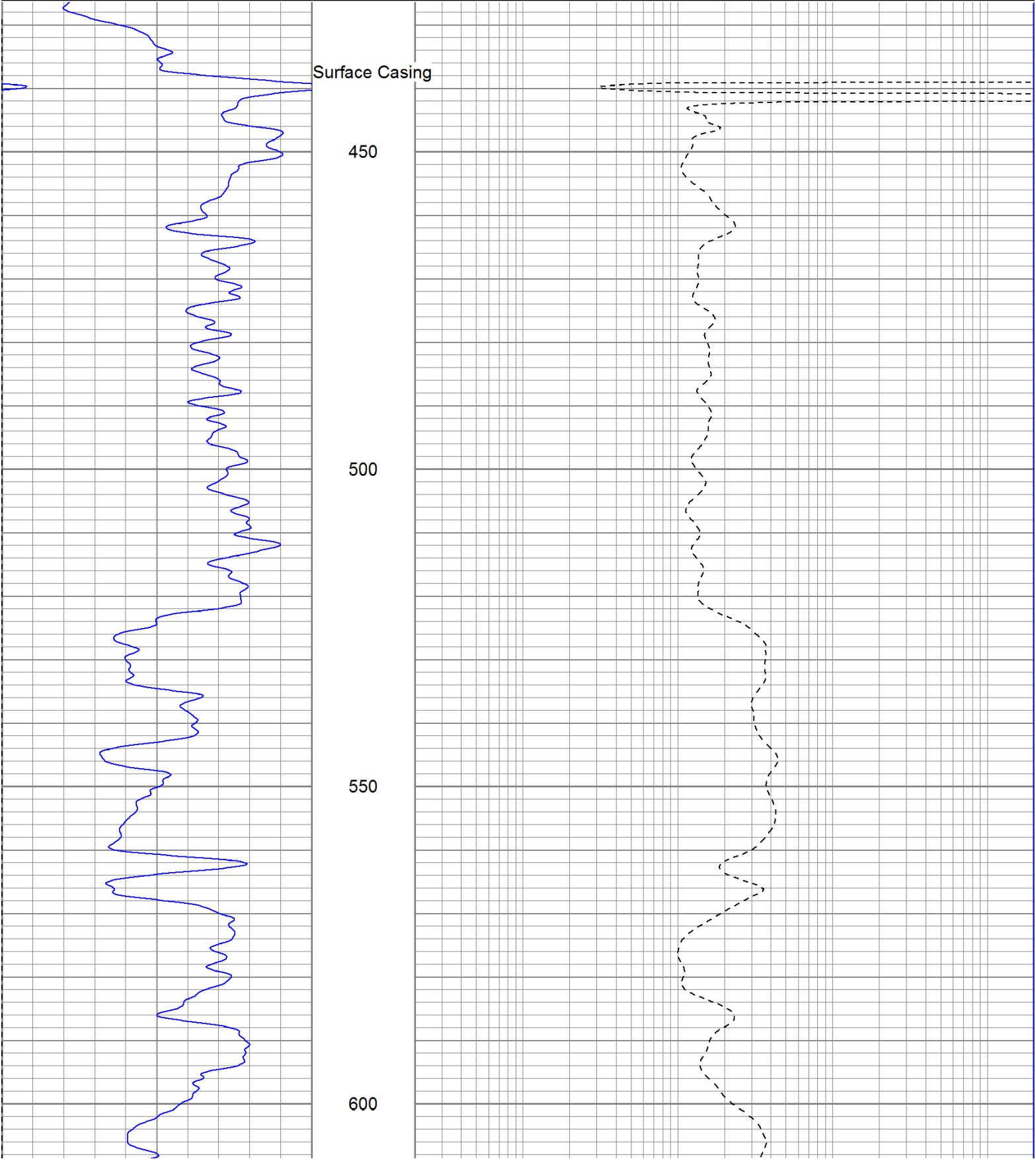
Surface Casing

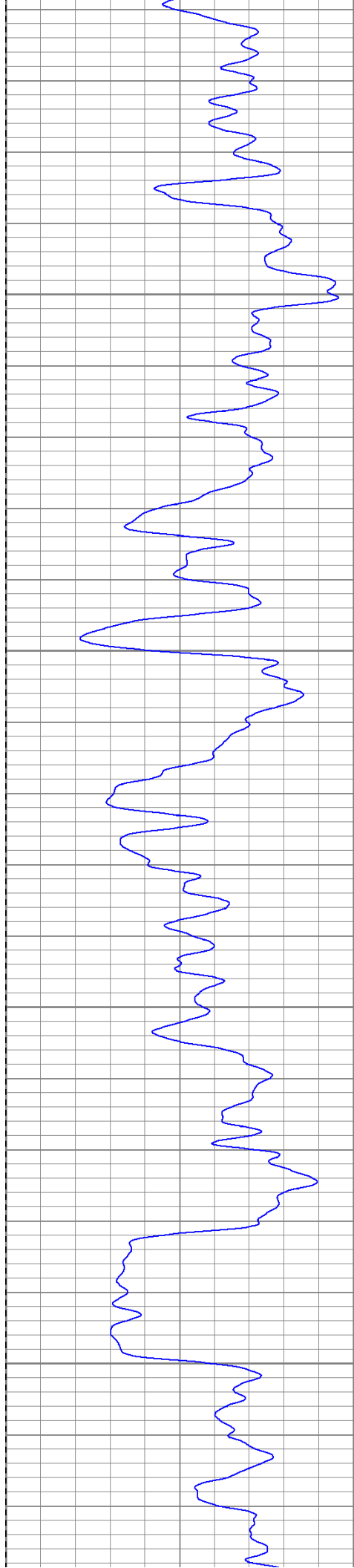
450

500

550

600



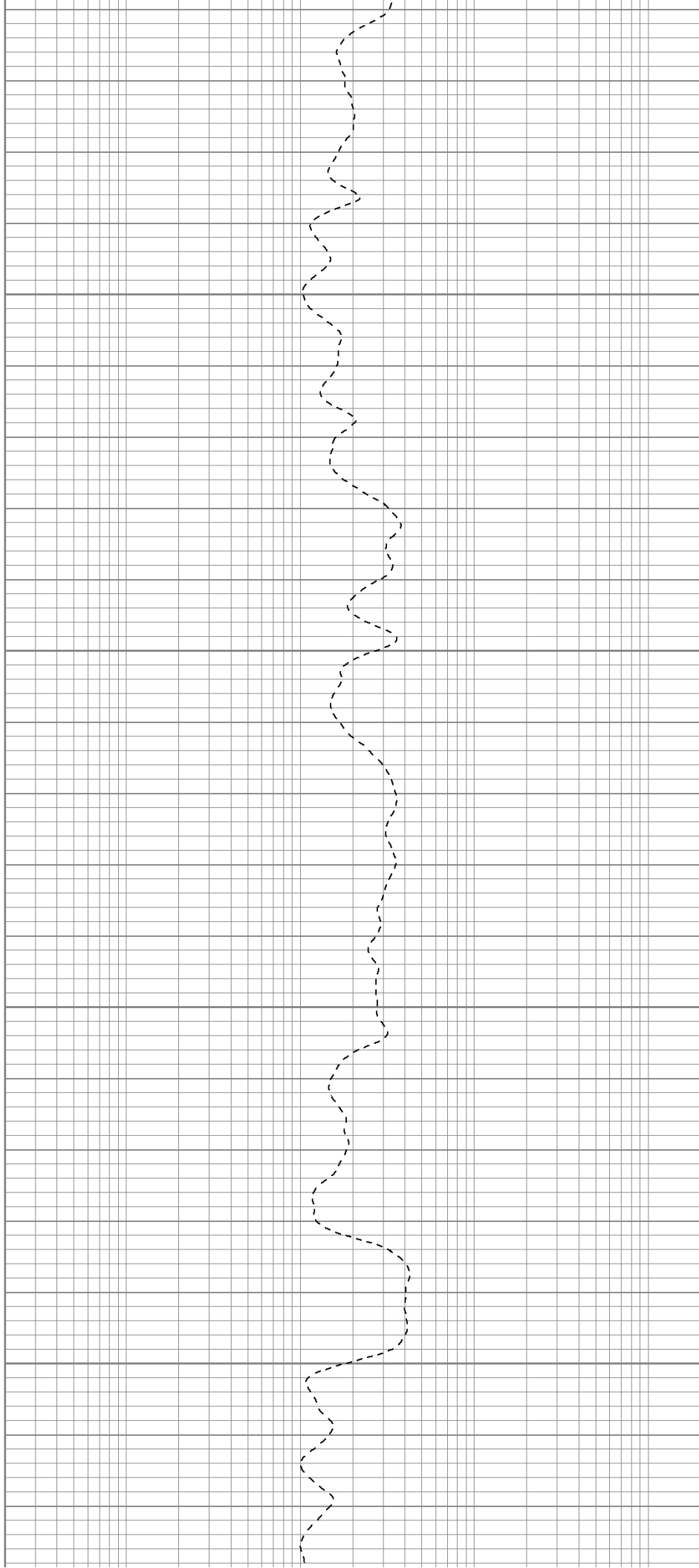


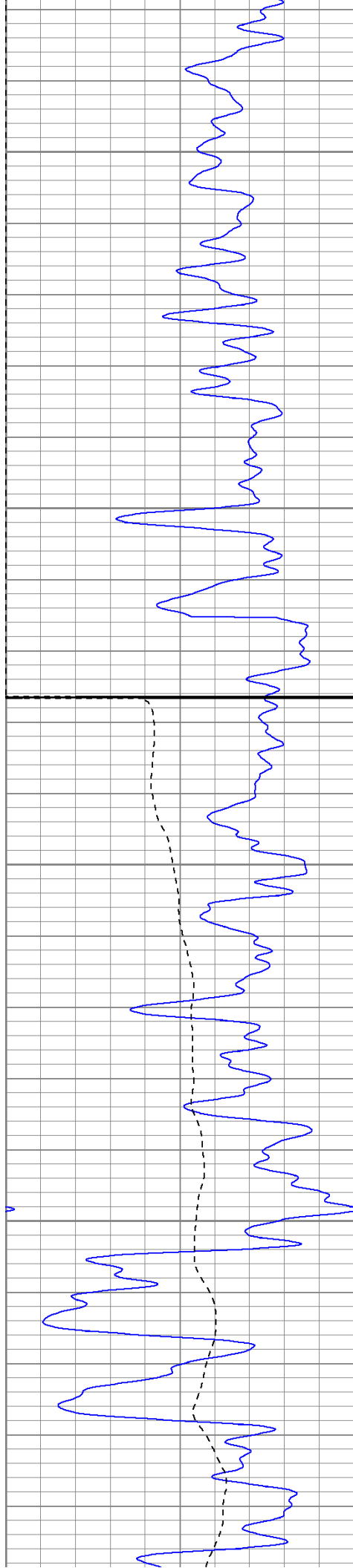
650

700

750

800





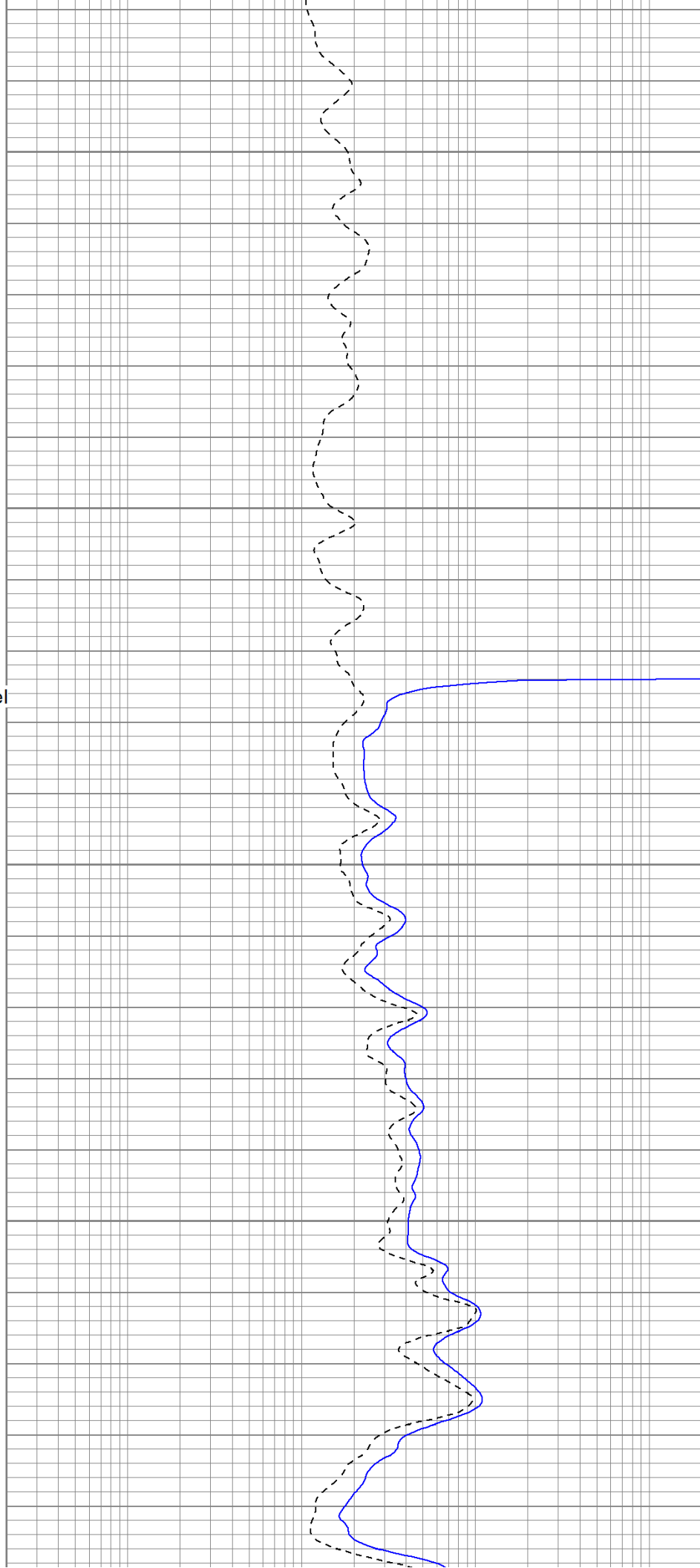
850

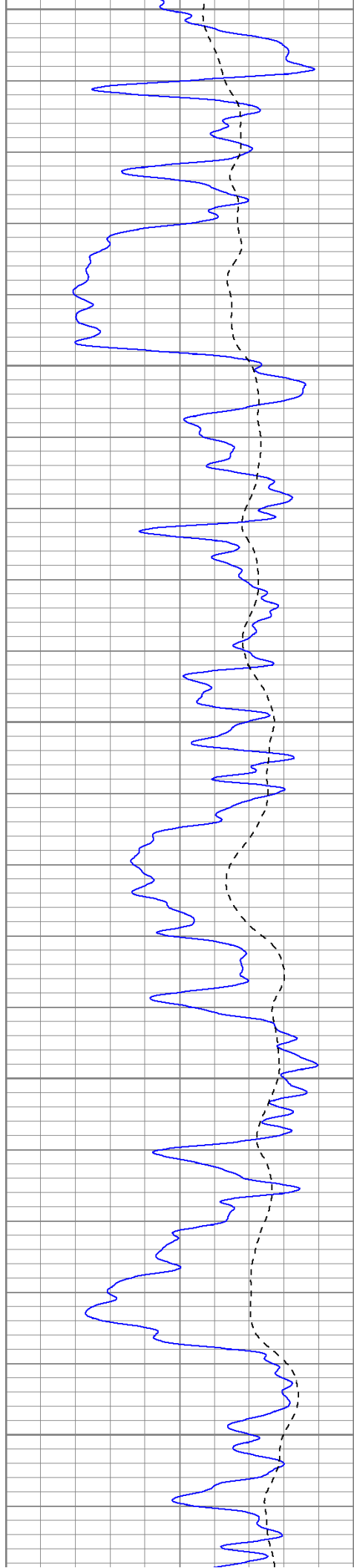
900

Fluid Level

950

1000





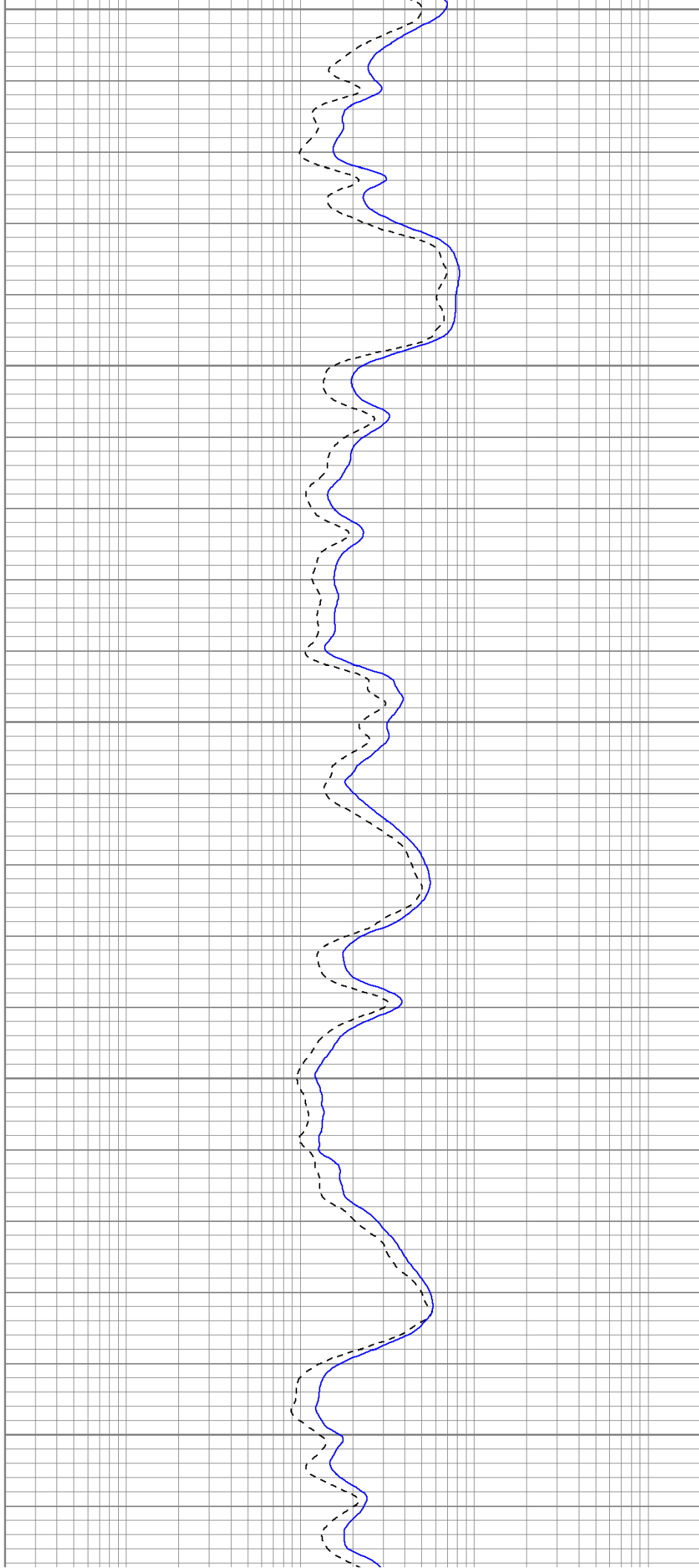
1050

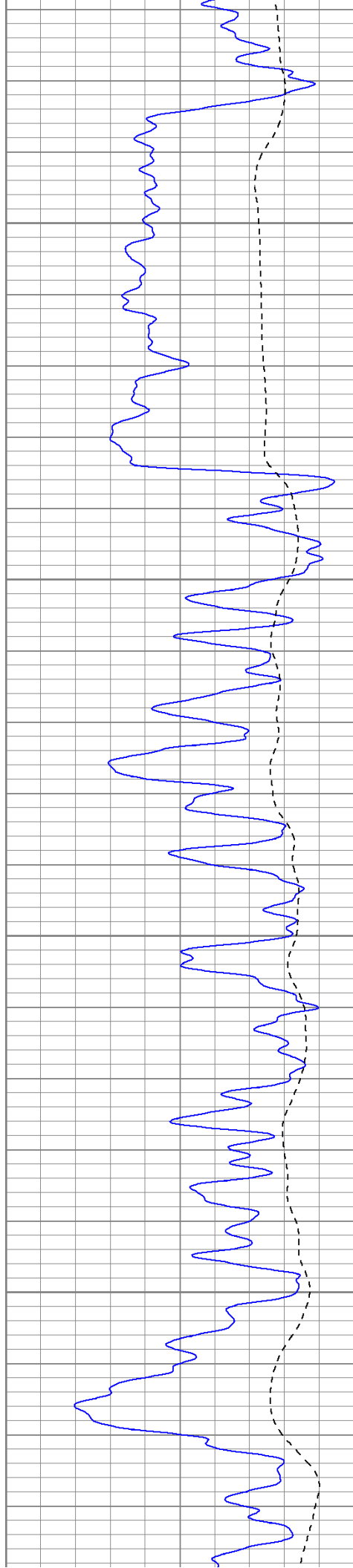
1100

1150

1200

1250



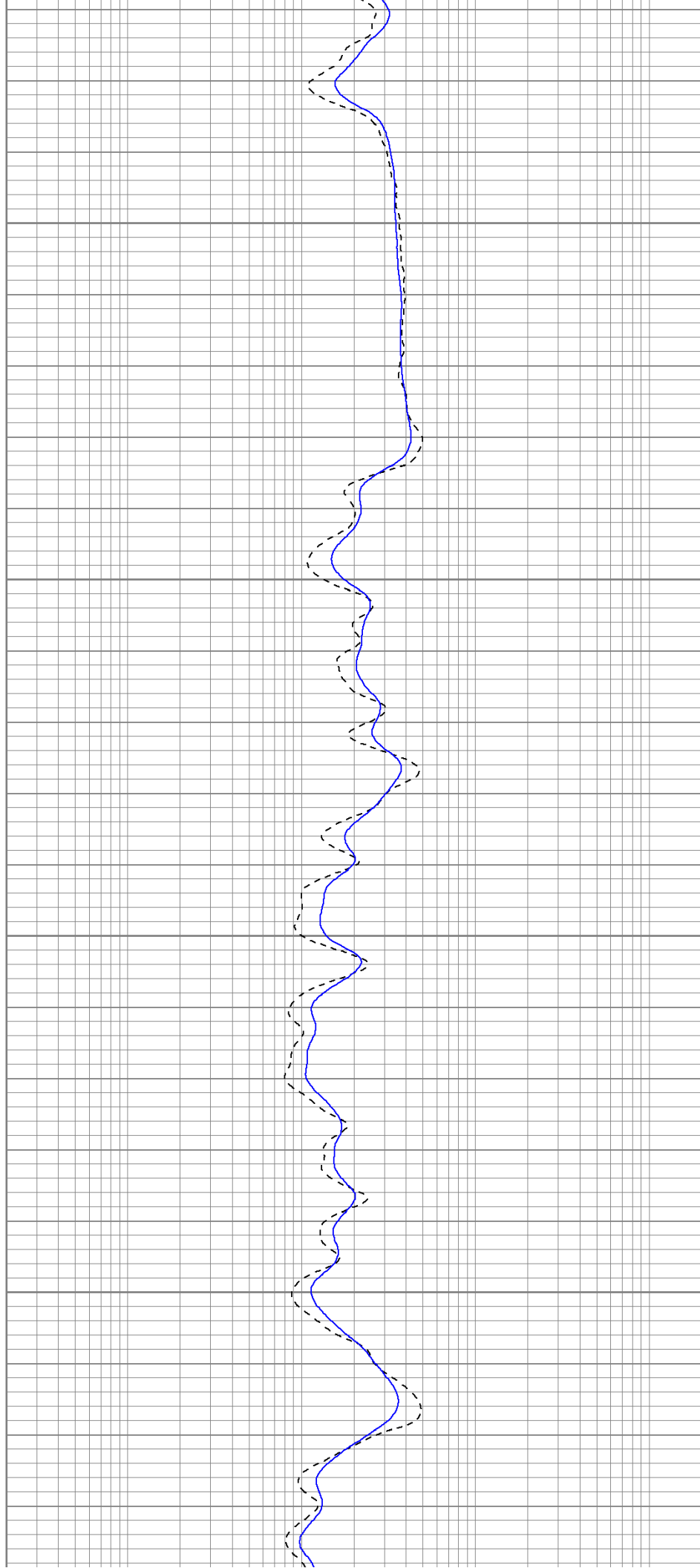


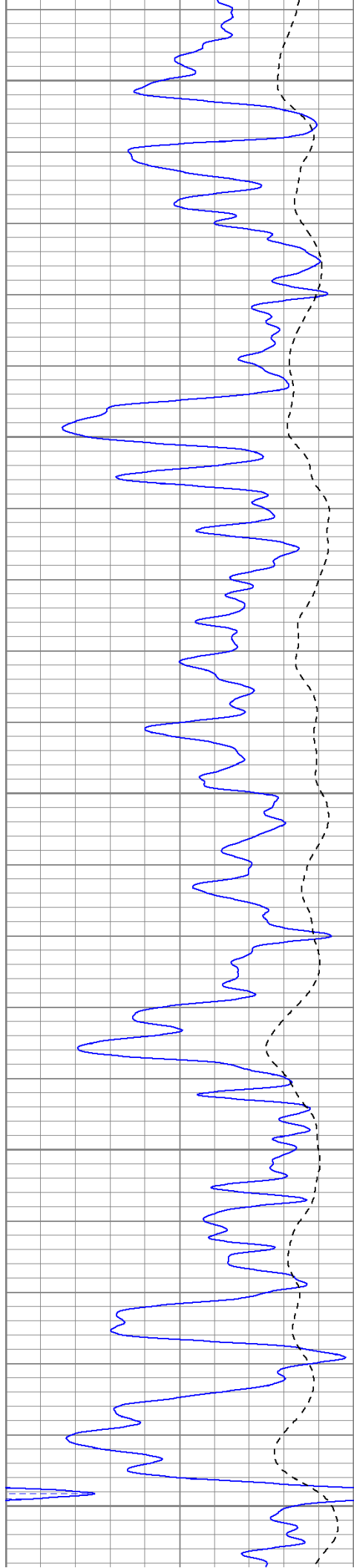
1300

1350

1400

1450





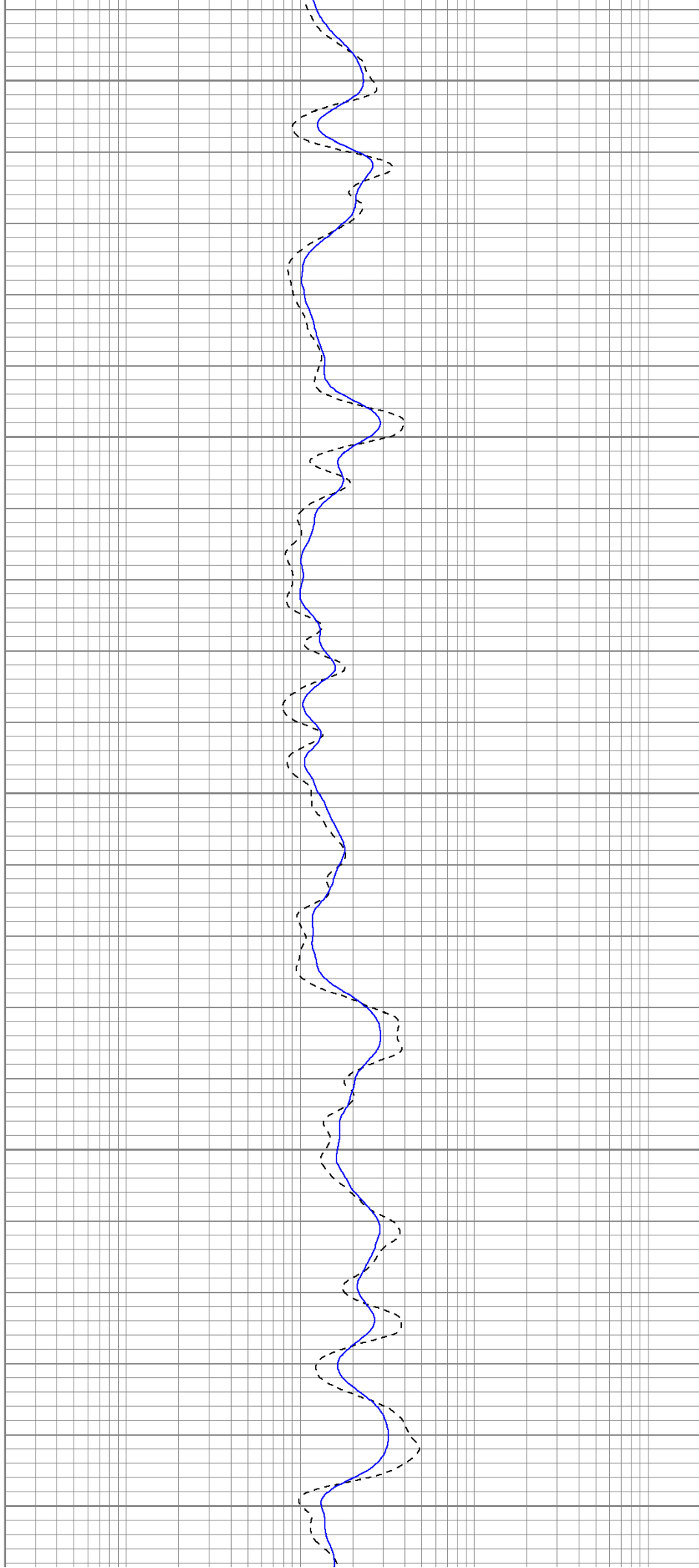
1500

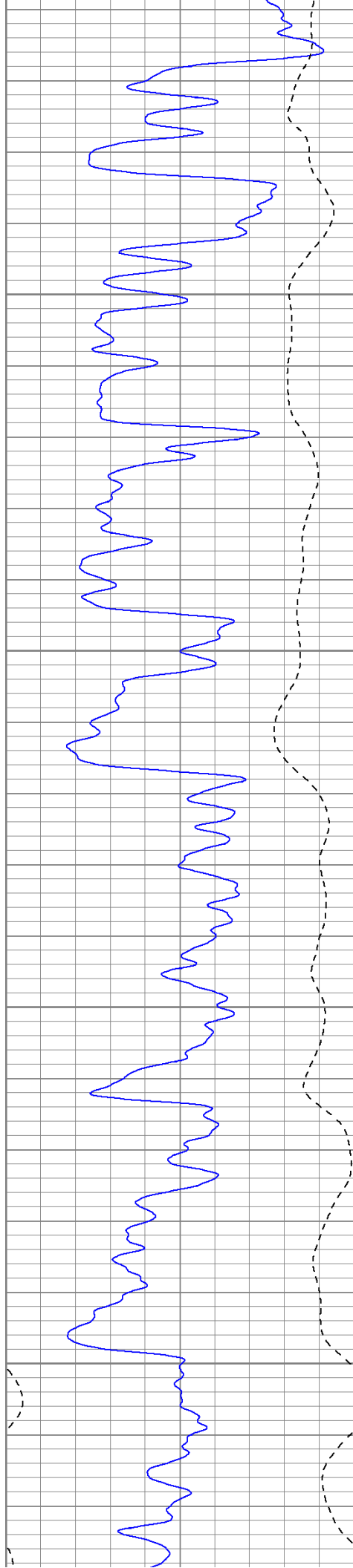
1550

1600

1650

1700



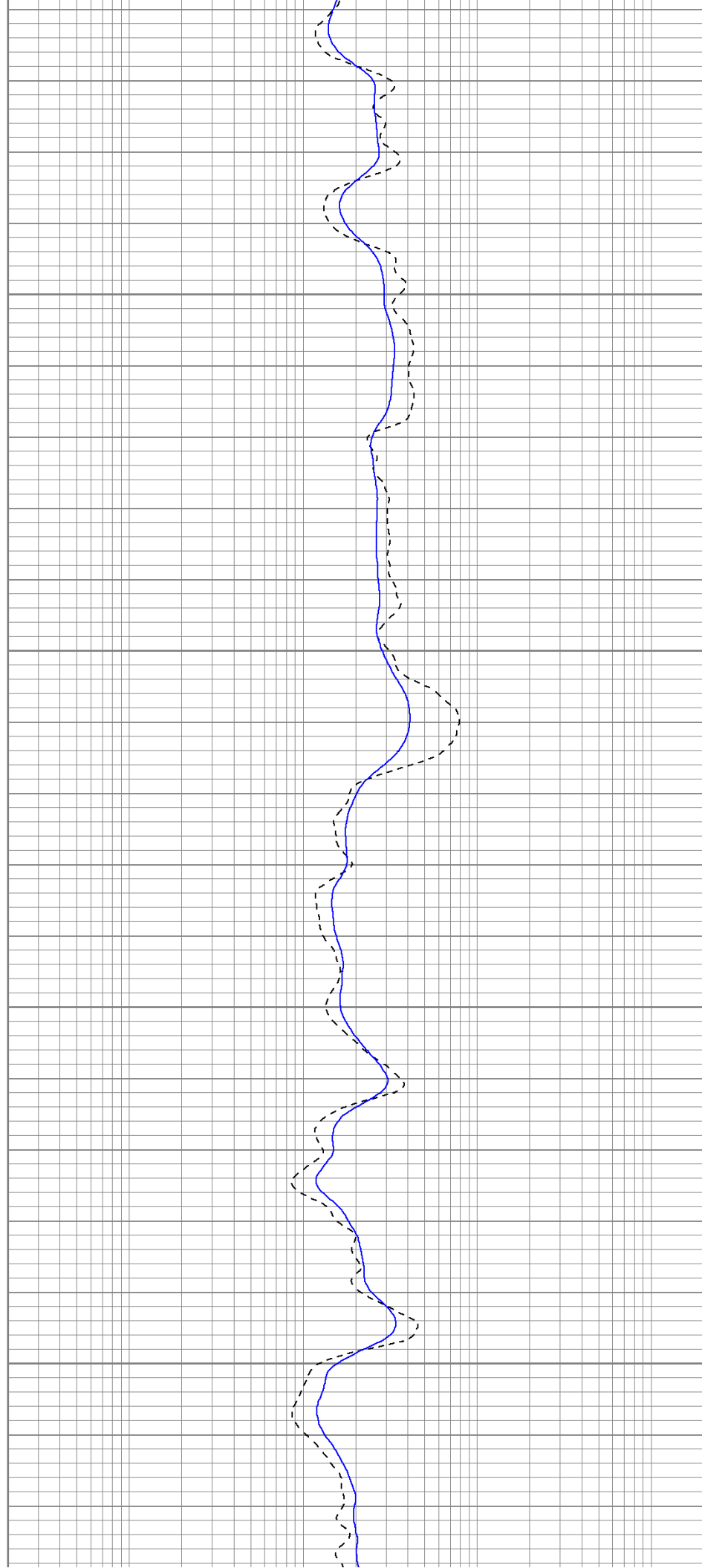


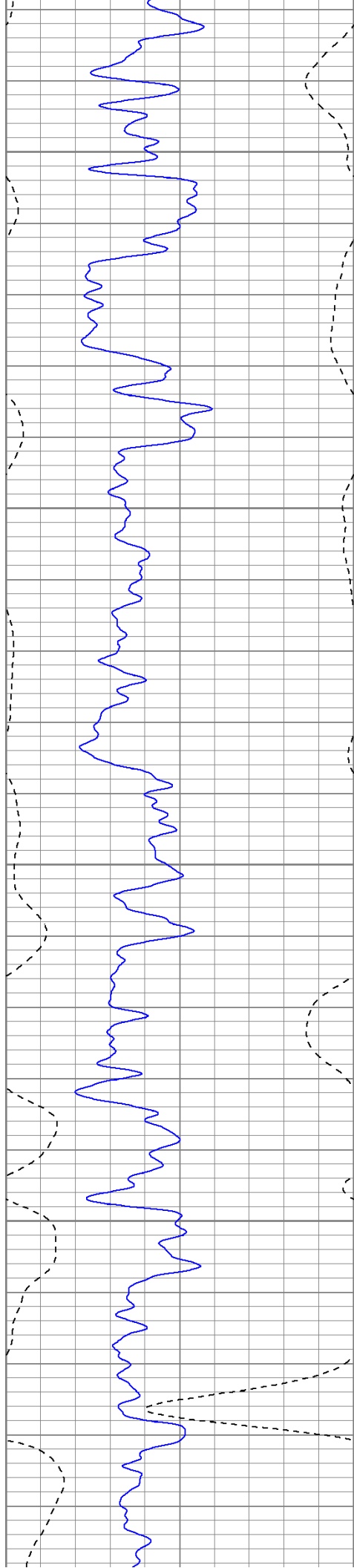
1750

1800

1850

1900



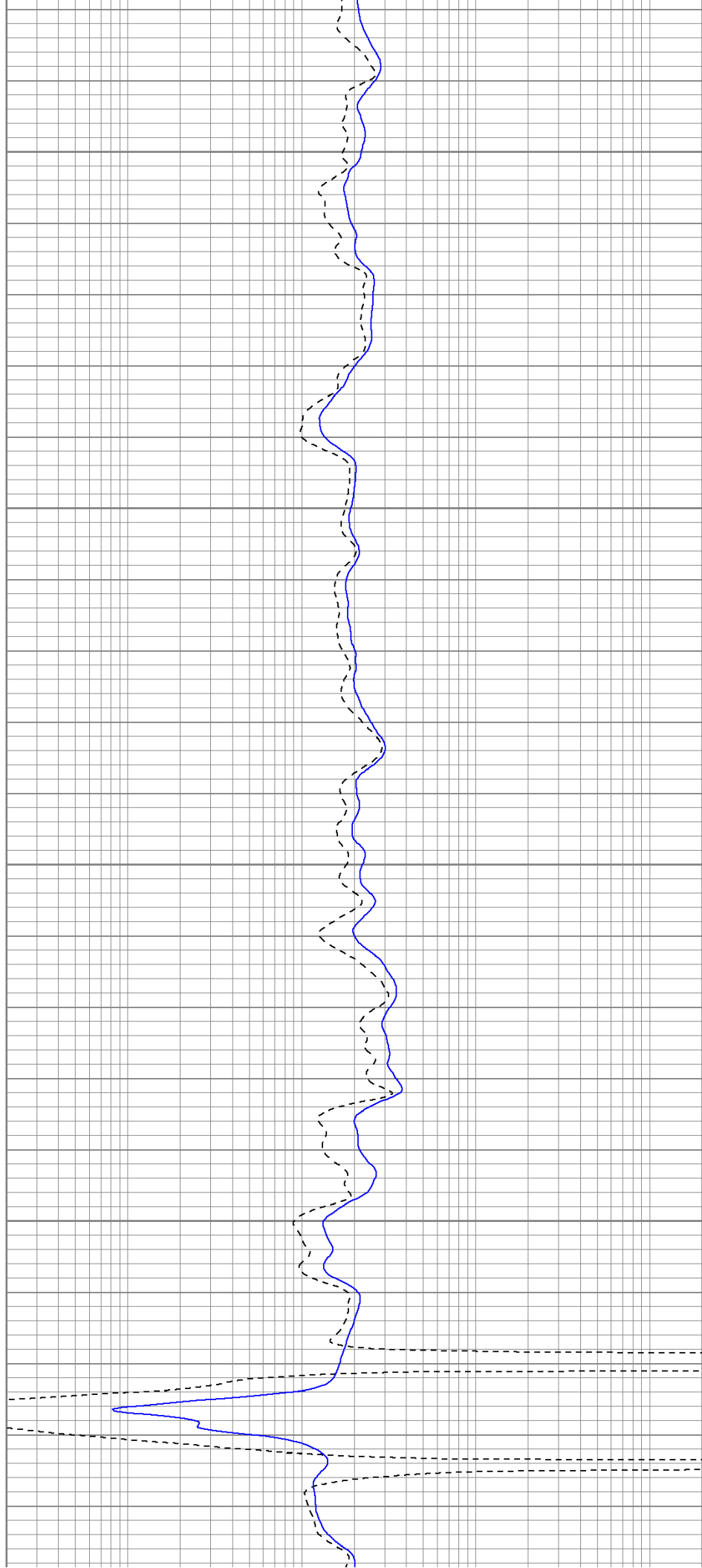


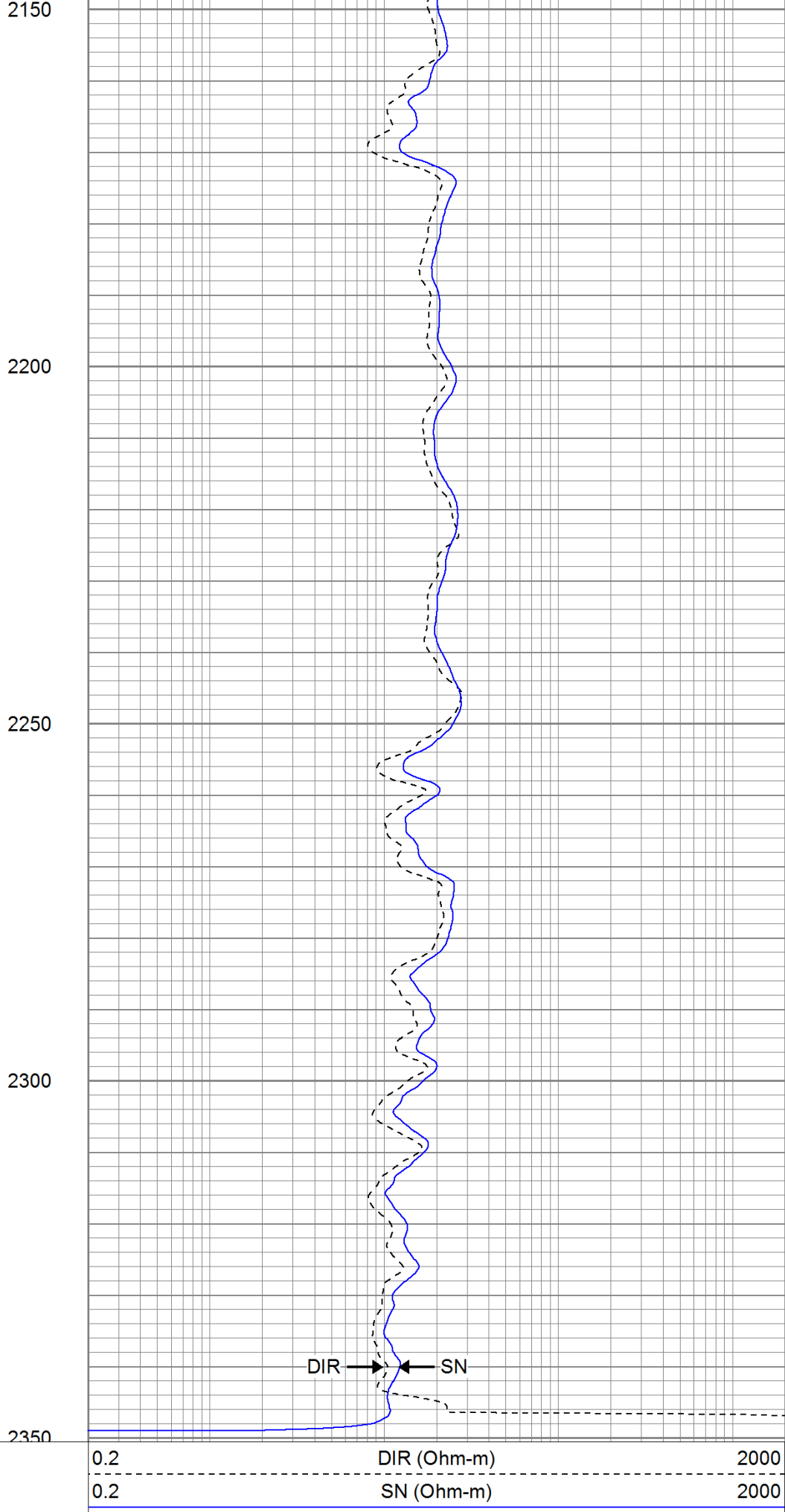
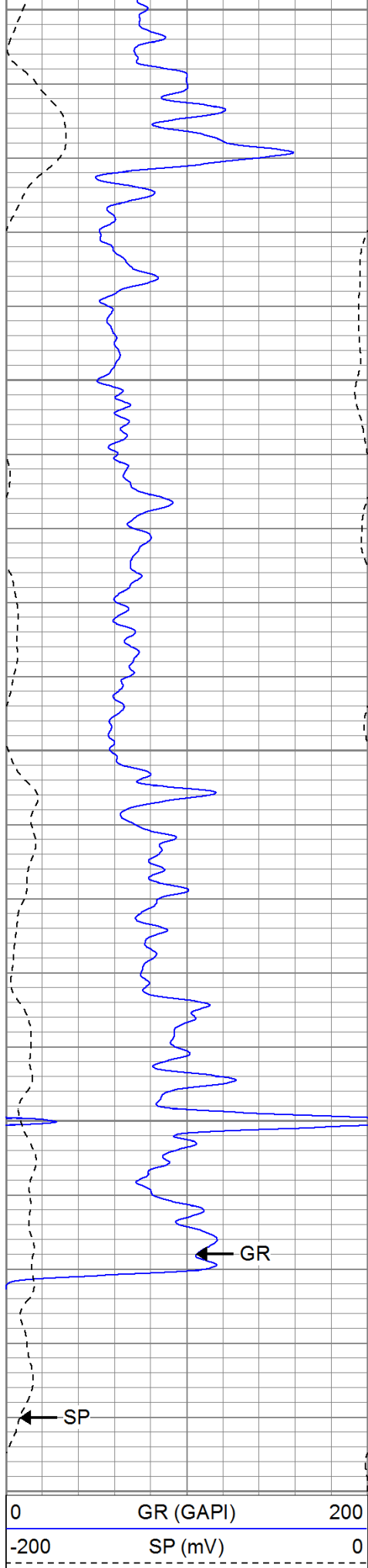
1950

2000

2050

2100



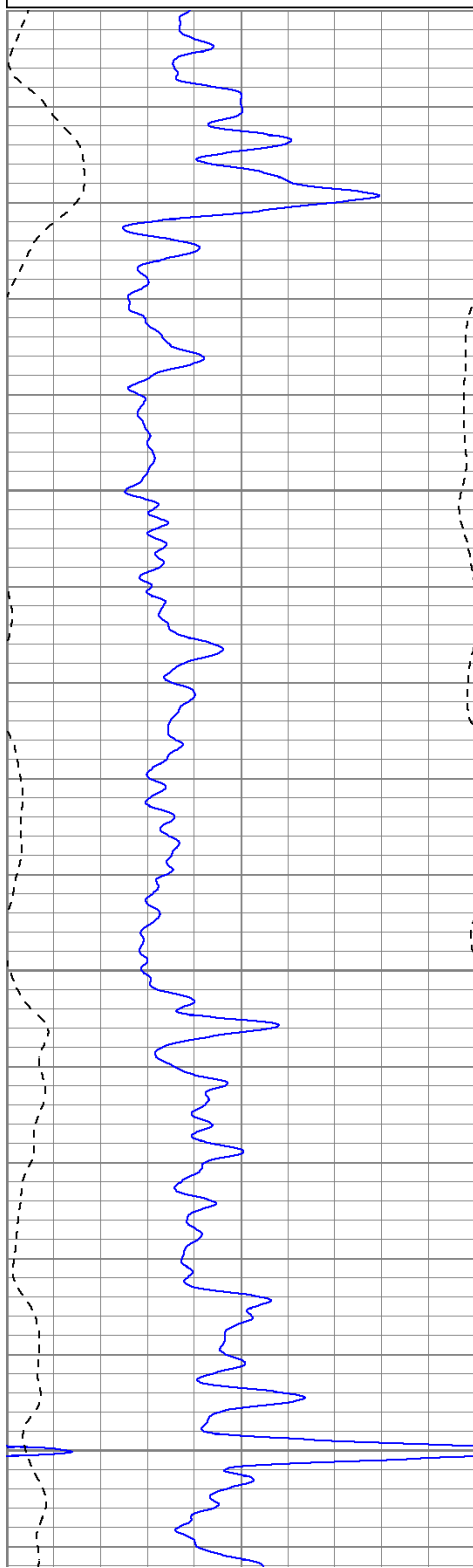


Repeat Pass

Database File: djembe.db
 Dataset Pathname: pass1.1
 Presentation Format: iel
 Dataset Creation: Fri Aug 26 18:33:07 2011 by Calc Open-Cased 110302
 Charted by: Depth in Feet scaled 1:240

0	GR (GAPI)	200
-200	SP (mV)	0

0.2	DIR (Ohm-m)	2000
0.2	SN (Ohm-m)	2000

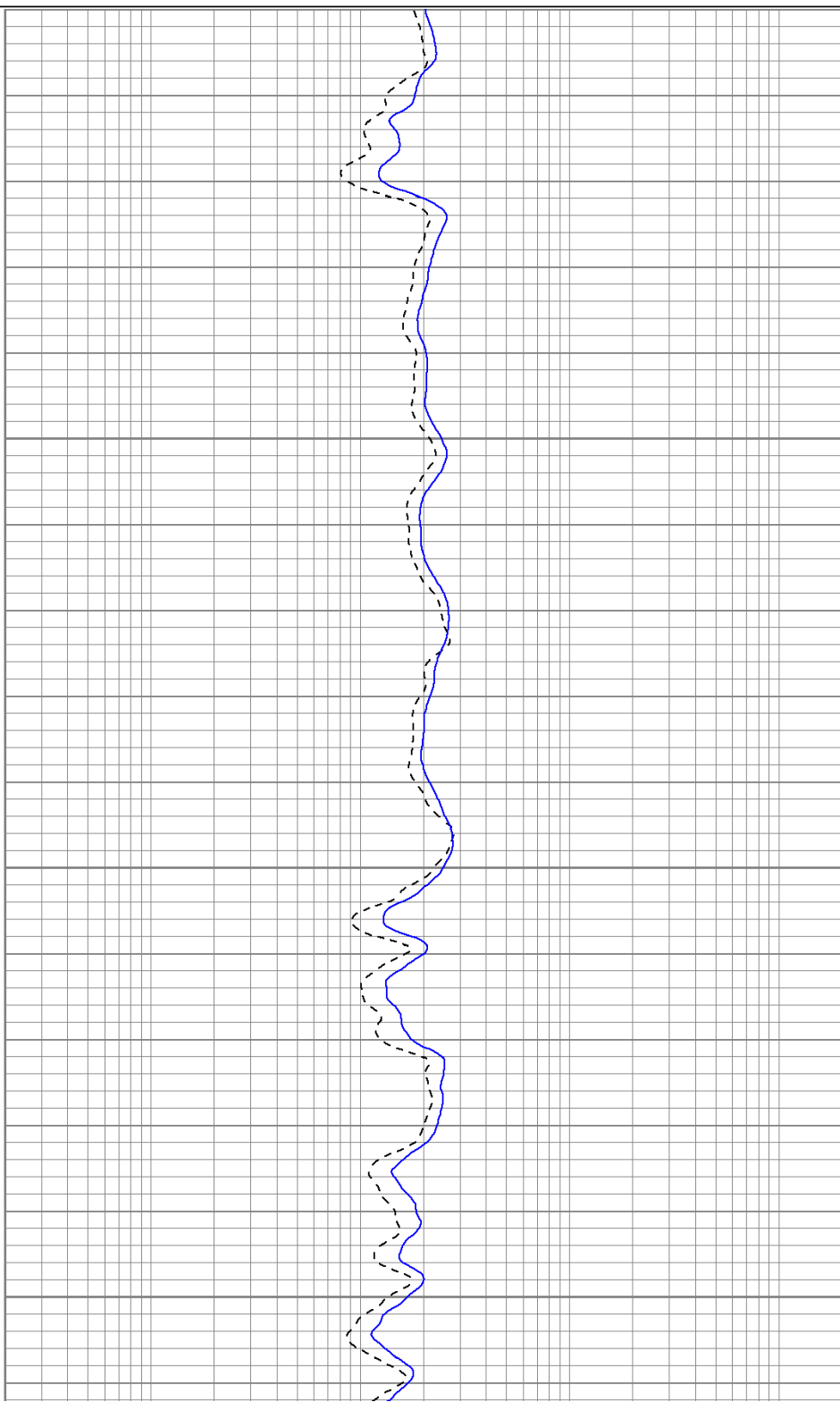


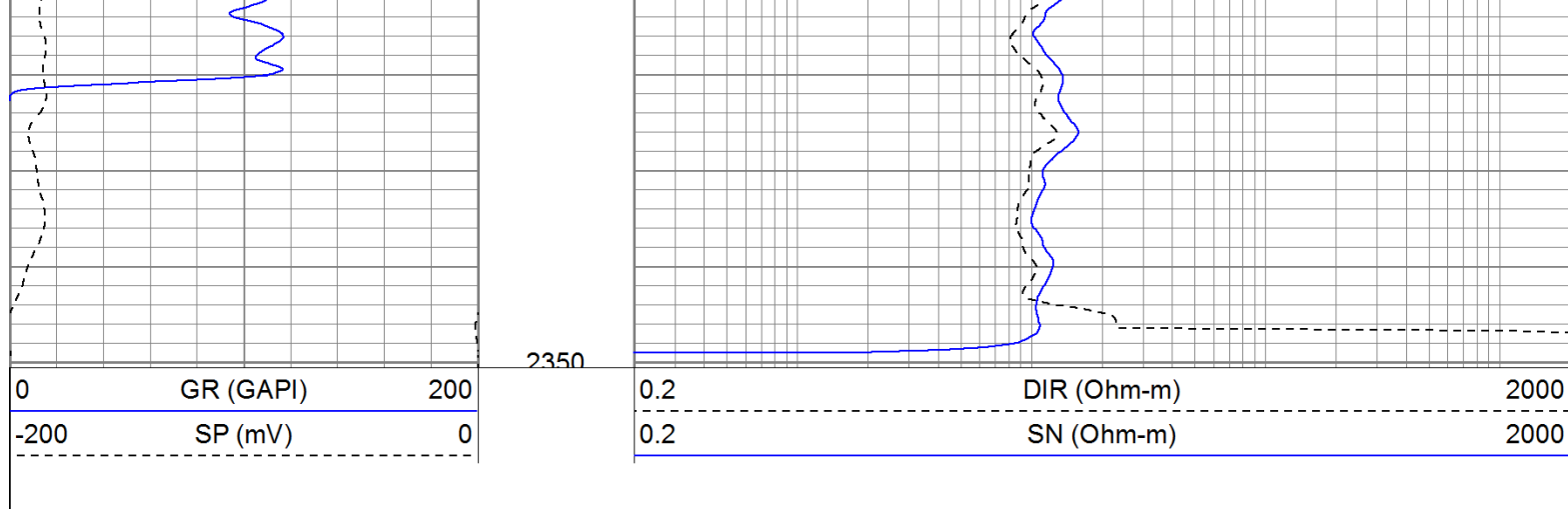
2150

2200

2250

2300





Calibration Report

Database File: djembe.db
 Dataset Pathname: pass1
 Dataset Creation: Fri Aug 26 17:18:34 2011 by Log Open-Cased 110302

Induction Tool Calibration Report

Serial Number: 903
 Tool Model: Probe
 Downhole Cal Performed: Sat Jun 18 15:02:12 2011
 Surface Cal Performed: Sat Jun 18 17:40:00 2011
 After Survey Verification Performed:

Surface Calibration:	Air	Loop	
Conductivity Reference:	0.000	500.000	mmho
Conductivity Reading:	-0.045	0.642	V
Internal Reference:	Zero	Cal	
Conductivity Reference:	0.000	500.000	mmho
Conductivity Reading:	0.006	0.641	V

Downhole Calibration:	Internal Zero	Internal Cal	
Conductivity Reference:	-0.702	499.904	mmho
Conductivity Reading:	-0.082	503.319	V
Short Normal Reference:	0.000	20.000	Ohm-m
Short Normal Reading:	0.006	0.233	V

Results:	Gain	Offset
Loop Conductivity:	728.211	32.770
Downhole Correction:	0.994	-0.621
Short Normal Resistivity:	88.245	-1.000

After Survey Verification	Internal Zero	Internal Cal	
Conductivity Reading:	0.000	0.000	V
Conductivity Result:	0.000	0.000	mmho
Short Normal Reading:	0.000	0.000	V
Short Normal Result:	0.000	0.000	Ohm-m



Compensated Density Calibration Report

Serial-Model: 901-2.75POH
 Source / Verifier: /
 Master Calibration Performed: Wed Jun 08 09:11:26 2011
 Before Survey Verification Performed:
 After Survey Verification Performed:

Master Calibration

	Density		Far Detector		Near Detector
Magnesium	1.710 g/cc		1001.79		578.48 cps

Aluminum	2.590	g/cc	180.36	300.39	cps
	Spine Angle = 69.08		Density/Spine Ratio = 0.479		
	Size		Reading		
Small Ring	8.00	in	2.50	V	
Large Ring	16.00	in	4.57	V	
Before Survey Verification					
	Target		Measured		
		g/cc			g/cc
		g/cc			g/cc
		g/cc			g/cc
After Survey Verification					
	Target		Measured		
		g/cc			g/cc
		g/cc			g/cc
		g/cc			g/cc
Neutron Calibration Report					
Serial Number:	803				
Tool Model:	2.75POH				
Performed:	Wed Jun 08 13:12:55 2011				
Calibrator Value:	1		NAPI		
Calibrator Reading:	1		cps		
Sensitivity:	1		NAPI/cps		
Gamma Ray Calibration Report					
Serial Number:	804				
Tool Model:	2.75POH				
Performed:	Fri Aug 12 08:39:59 2011				
Calibrator Value:	1.0		GAPI		
Background Reading:	0.0		cps		
Calibrator Reading:	1.0		cps		
Sensitivity:	0.6500		GAPI/cps		

Sensor	Offset (ft)	Schematic	Description	Len (ft)	OD (in)	Wt (lb)
GR	29.58		None	0.75	1.50	5.00
			GR-2.75POH (804) Probe 2.75" Probe Open Hole Gamma Ray	3.73	2.75	43.00
NEU	24.04		NEU-2.75POH (803) Probe Epithermal	4.75	2.75	58.00

