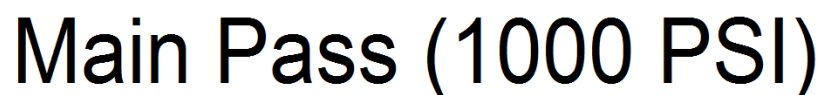




<<< Fold Here >>>

Comments

Rancho Escondido, at dumpsters go left , go thru yellow pole gate, go to top of hill, stay right, first right, drive thru Montoya 44-1 location, take left down hill, @ Y go left, 2nd left, dead end on location.

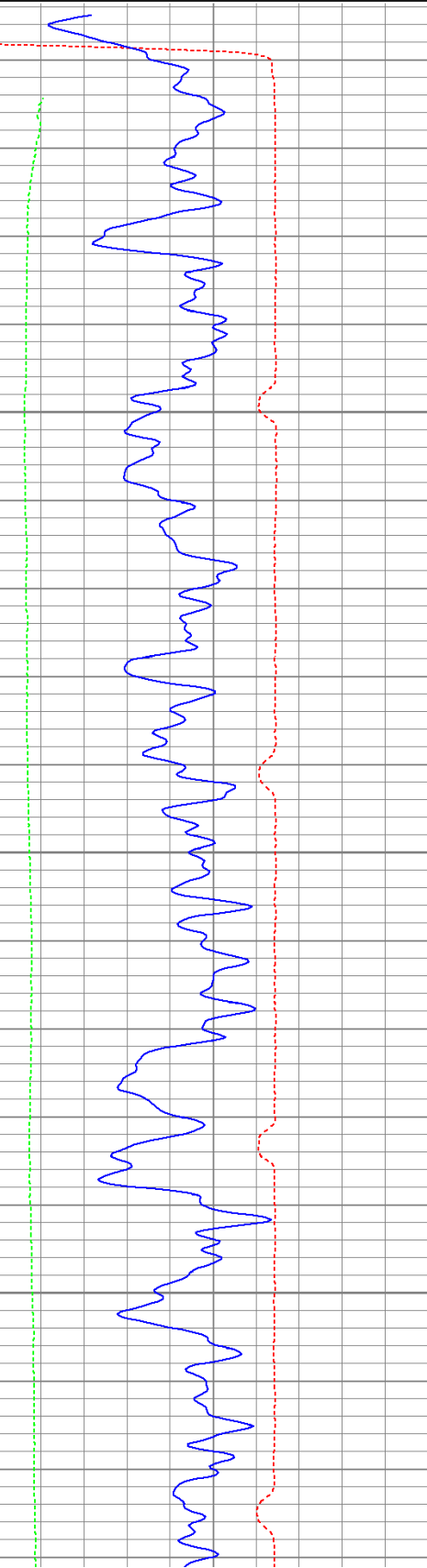


Database File: djembe91711b.db
Dataset Pathname: pass2
Presentation Format: cbldig
Dataset Creation: Sat Sep 17 12:32:27 2011 by Log Open-Cased 110302
Charted by: Depth in Feet scaled 1:240

400	Travel Time (usec)	200
0	GR (GAPI)	200
0	DEVI (°)	10

0	Amplitude (mV)	100
9	Collar Locator	-1

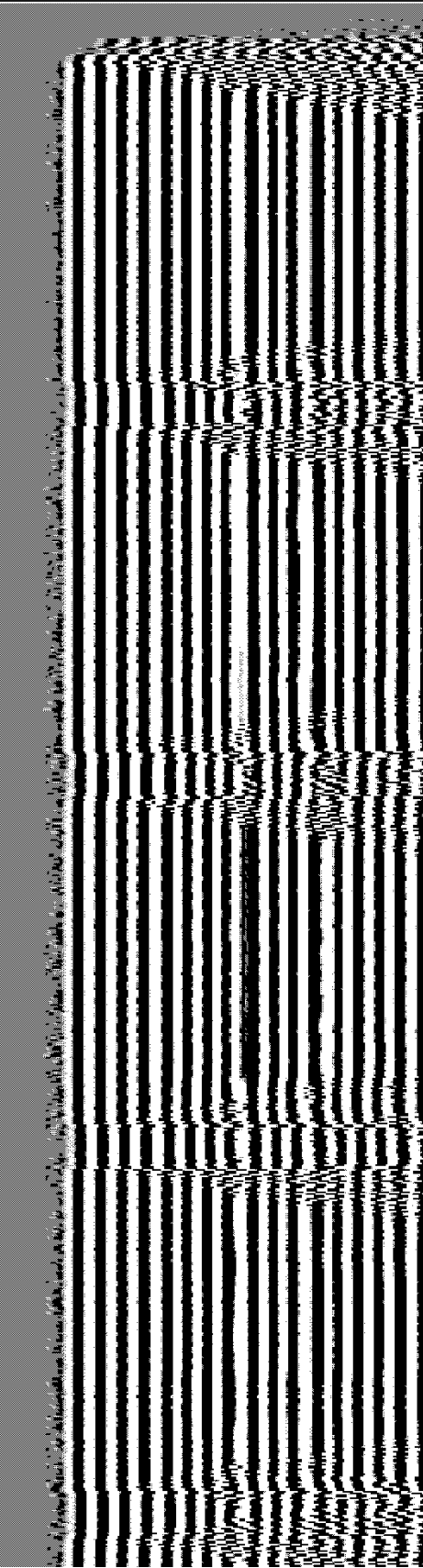
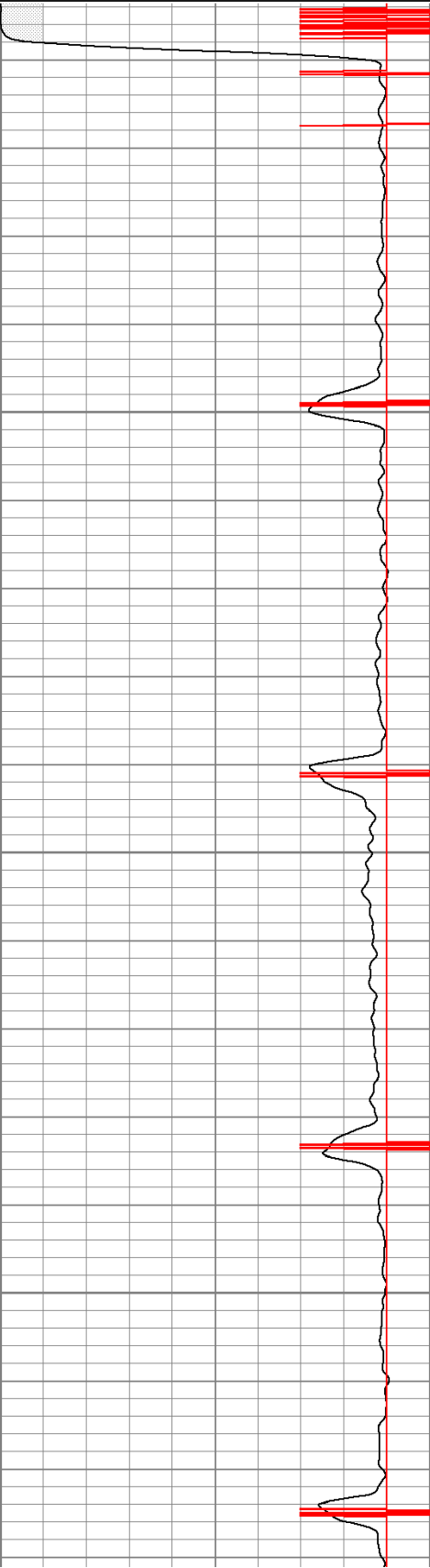
200 Variable Density 1200

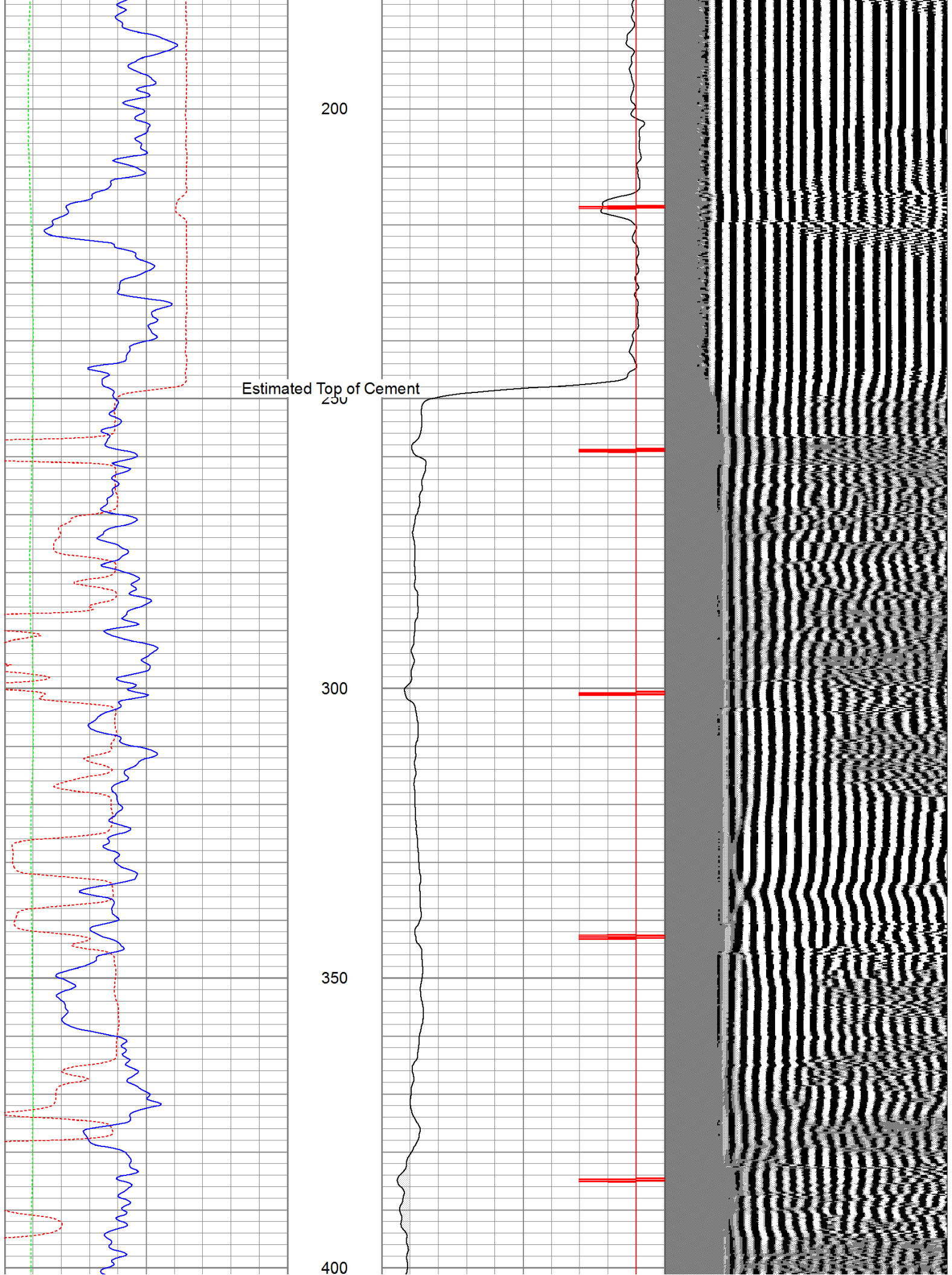


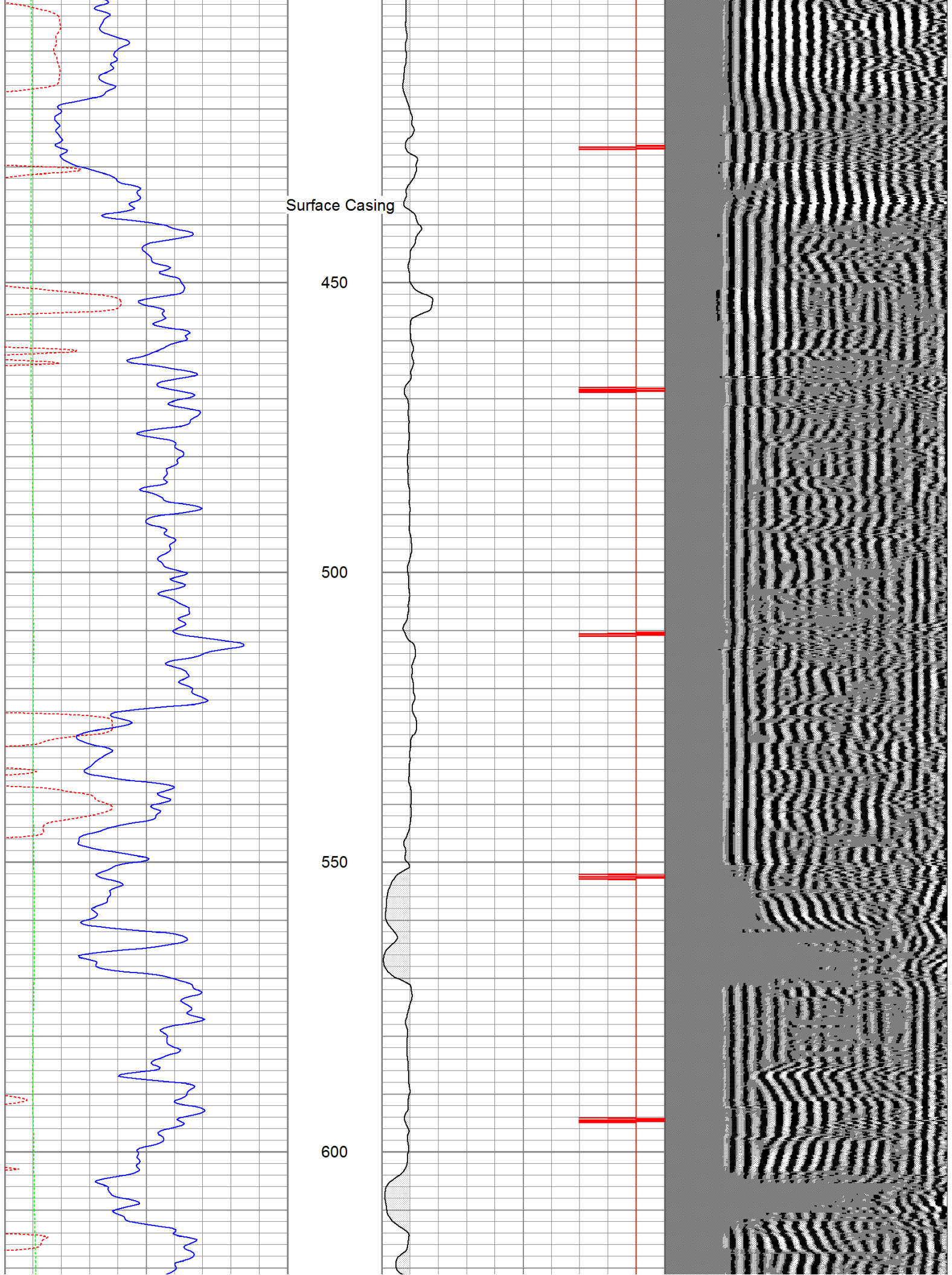
50

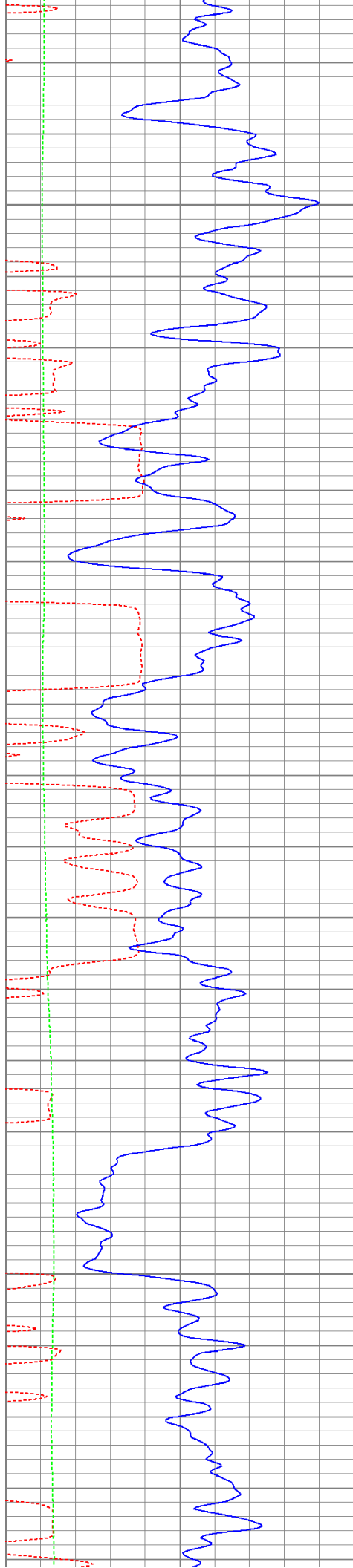
100

150







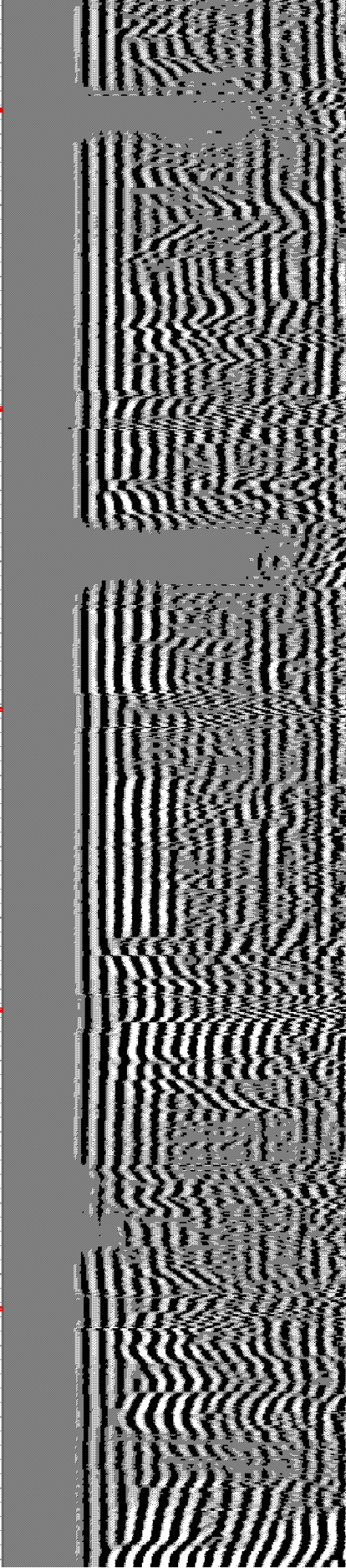
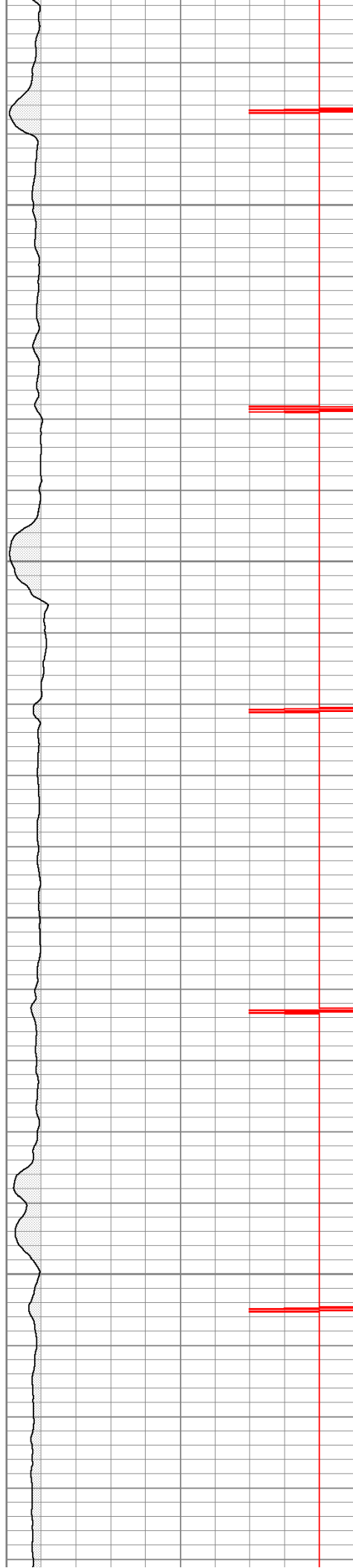


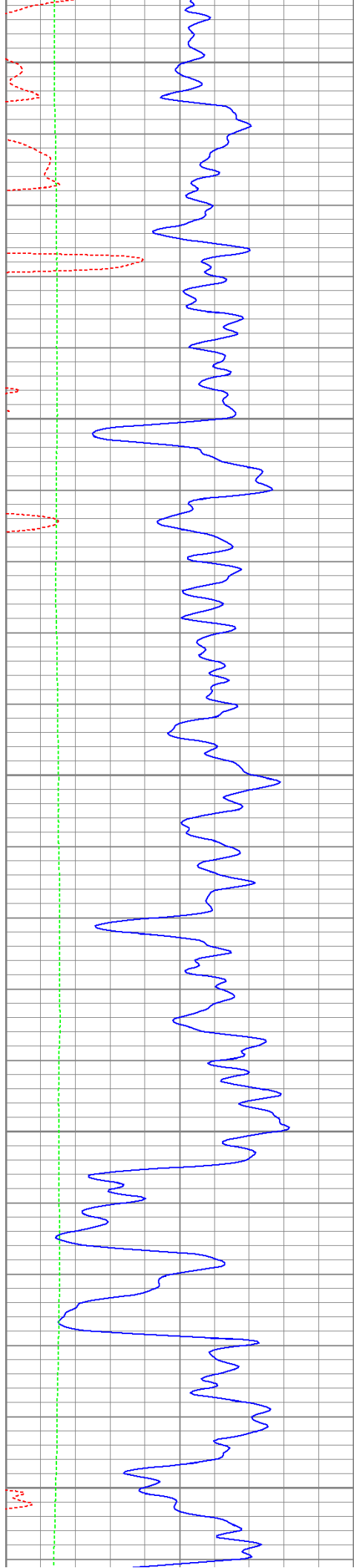
650

700

750

800





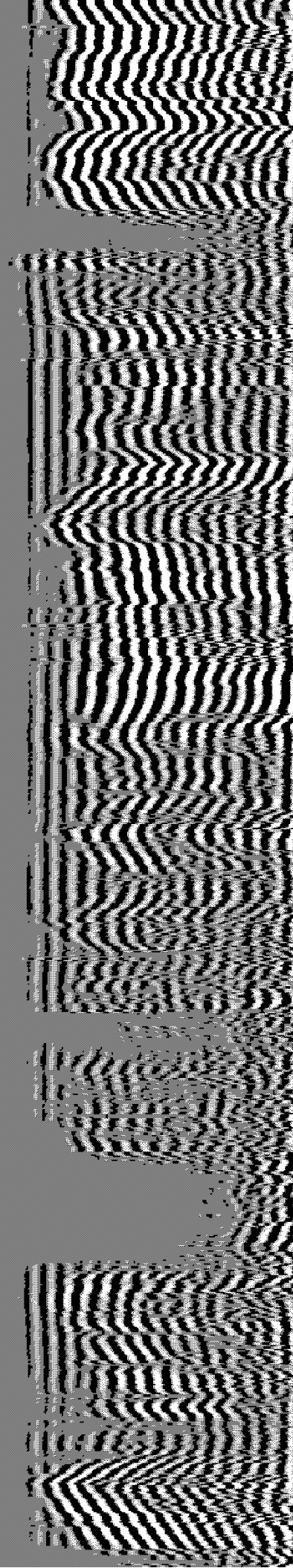
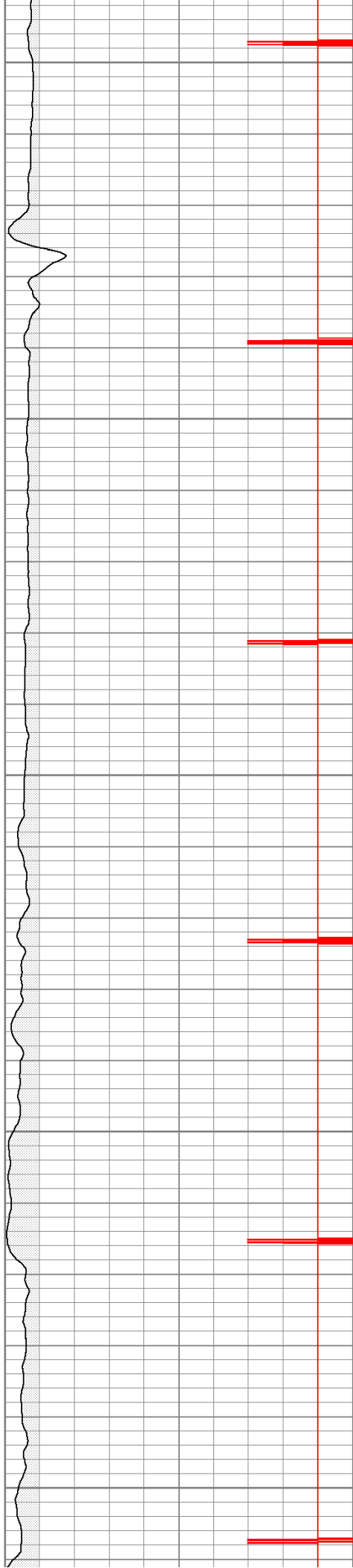
850

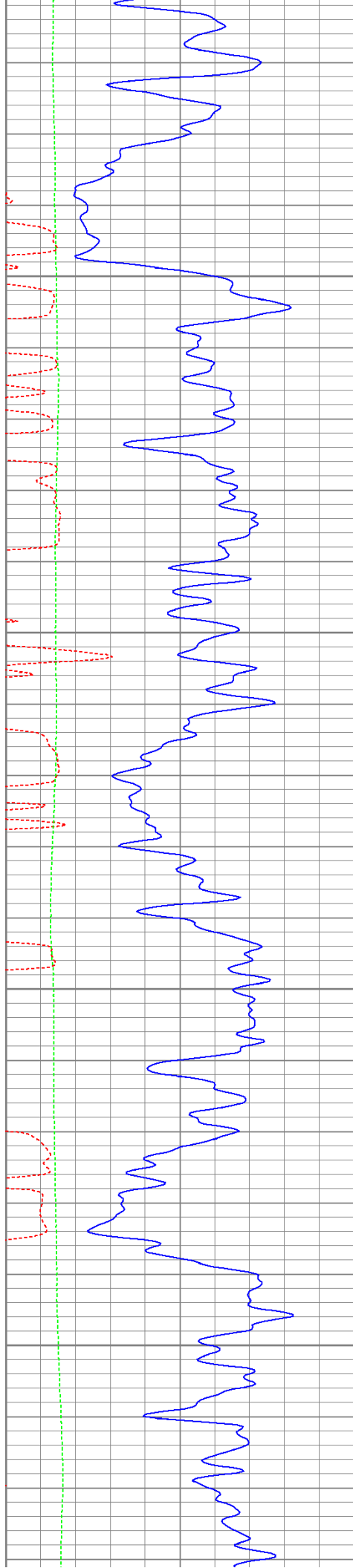
900

950

1000

1050



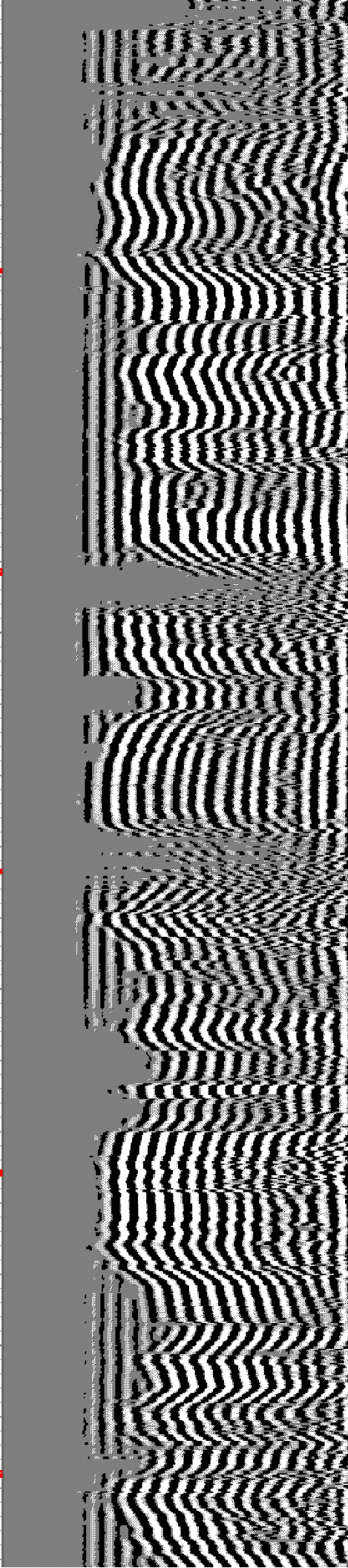
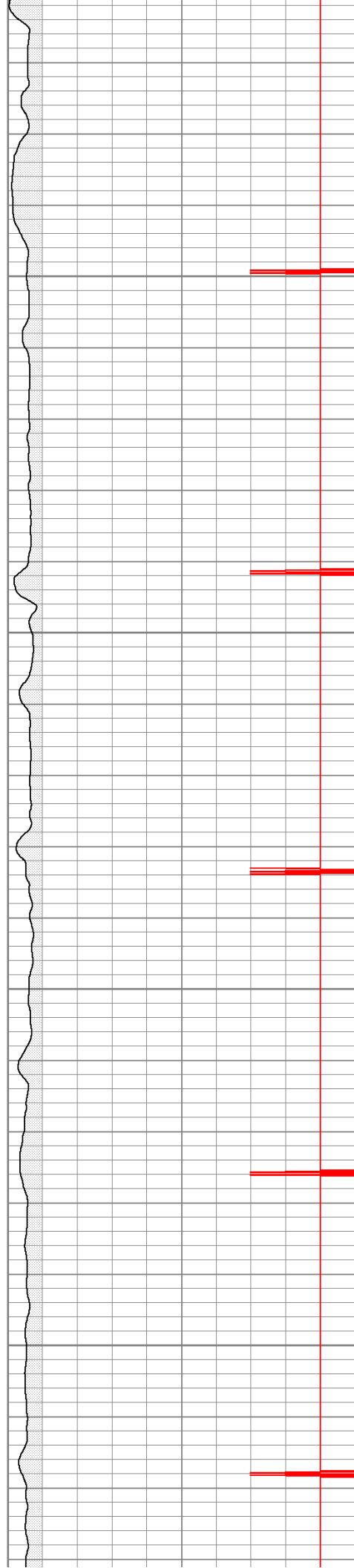


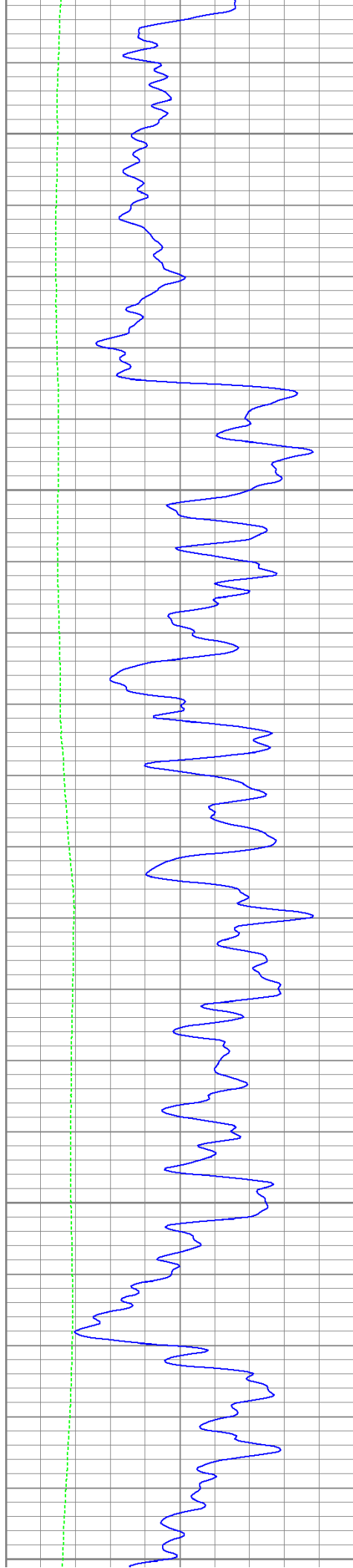
1100

1150

1200

1250





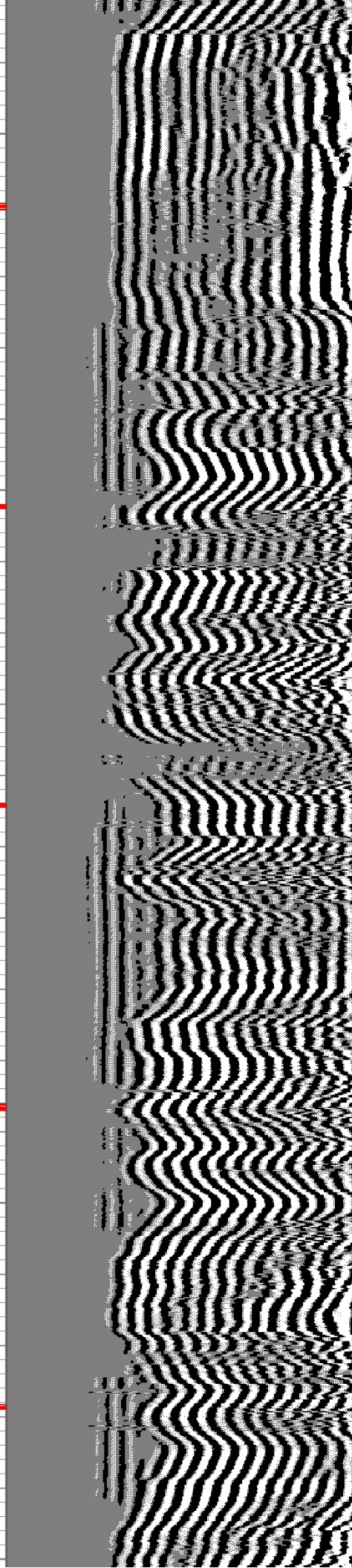
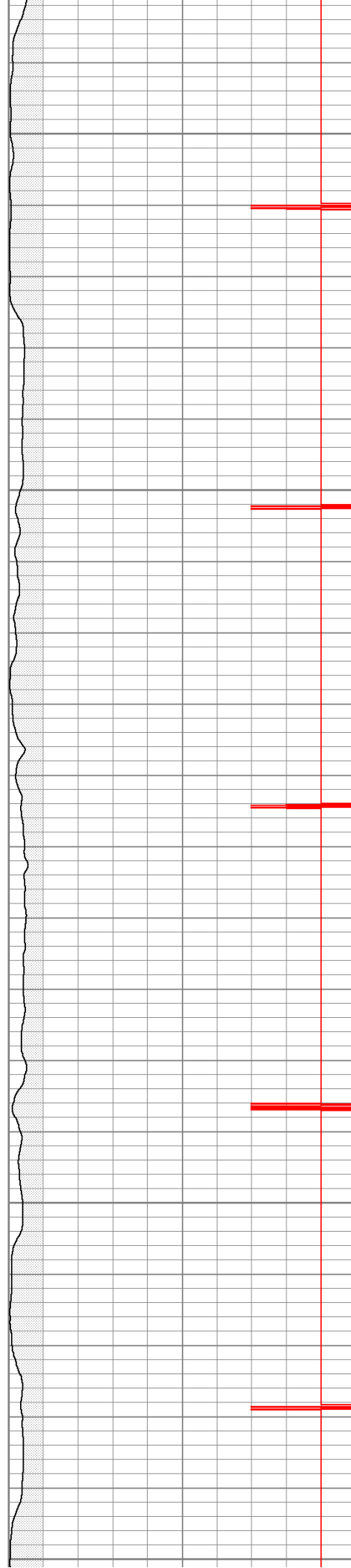
1300

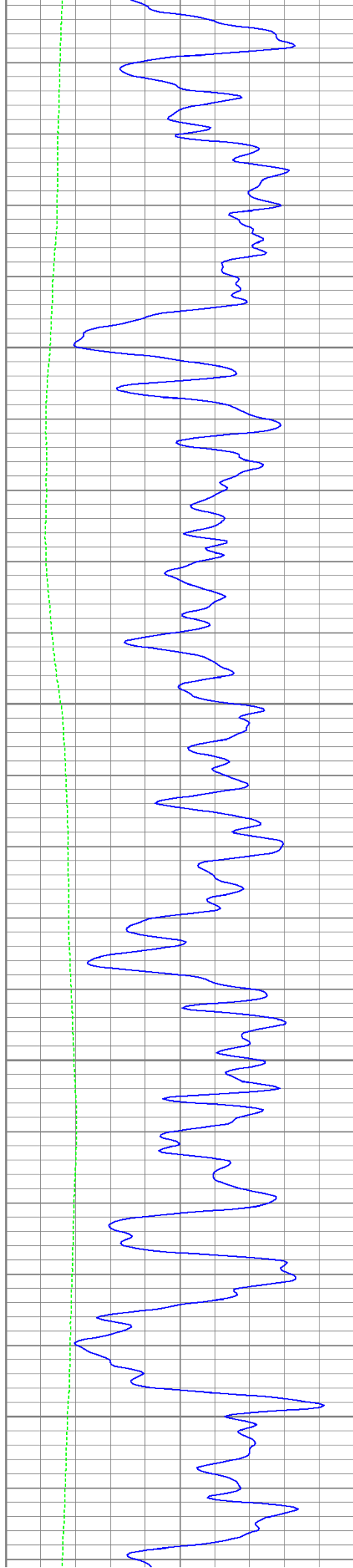
1350

1400

1450

1500



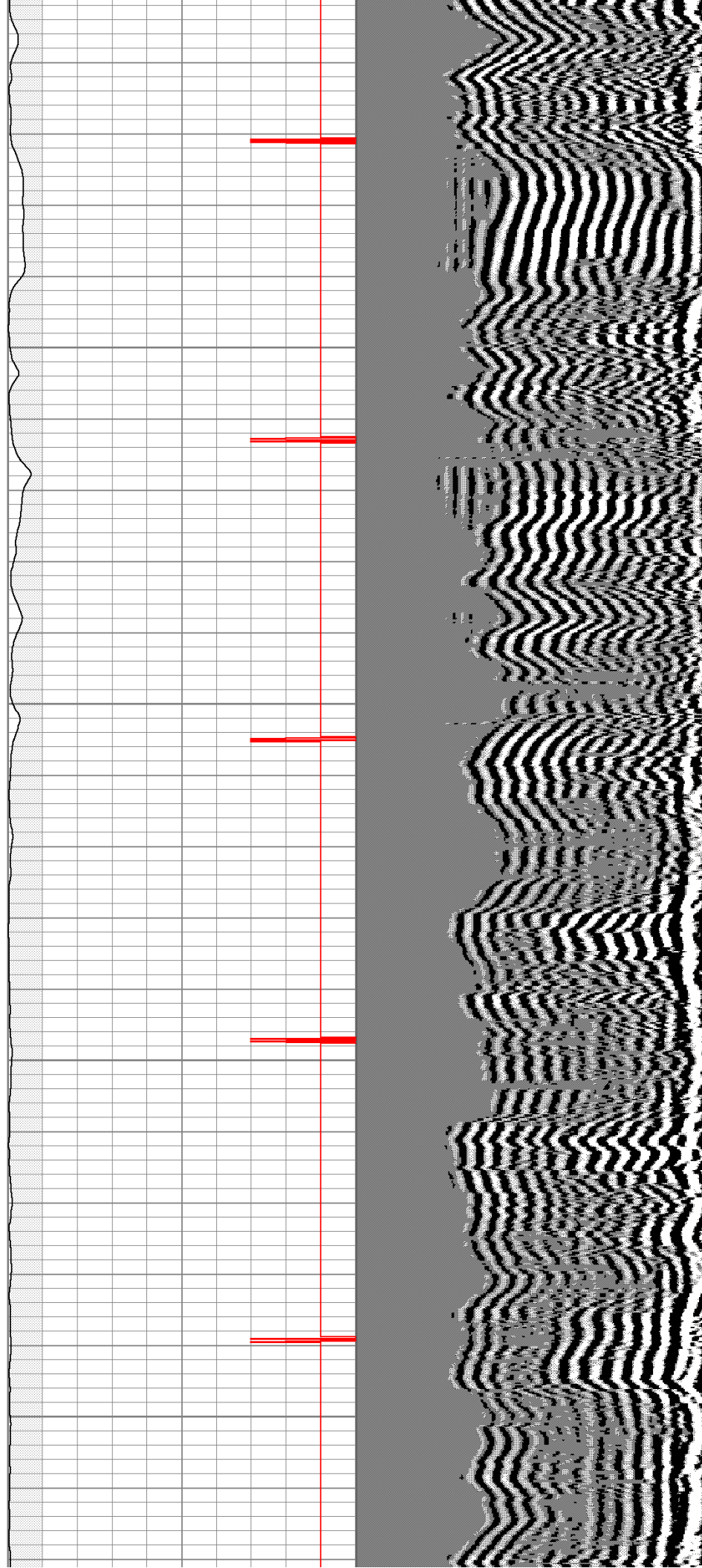


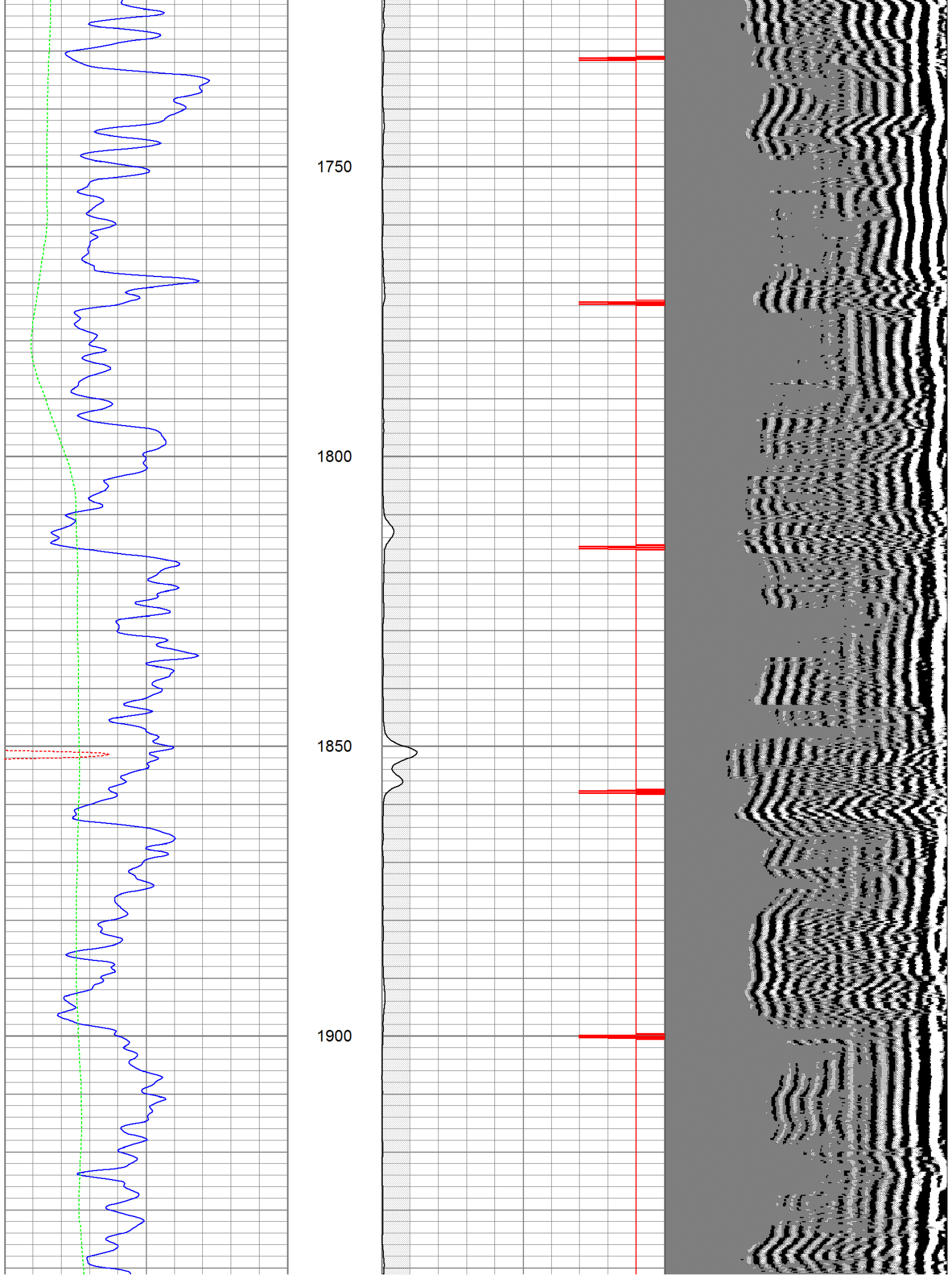
1550

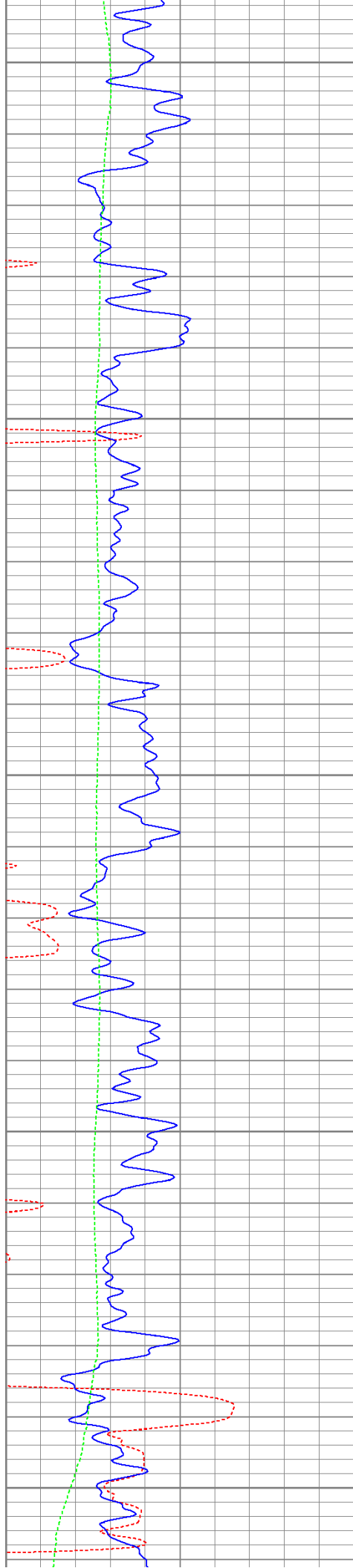
1600

1650

1700







1950

2000

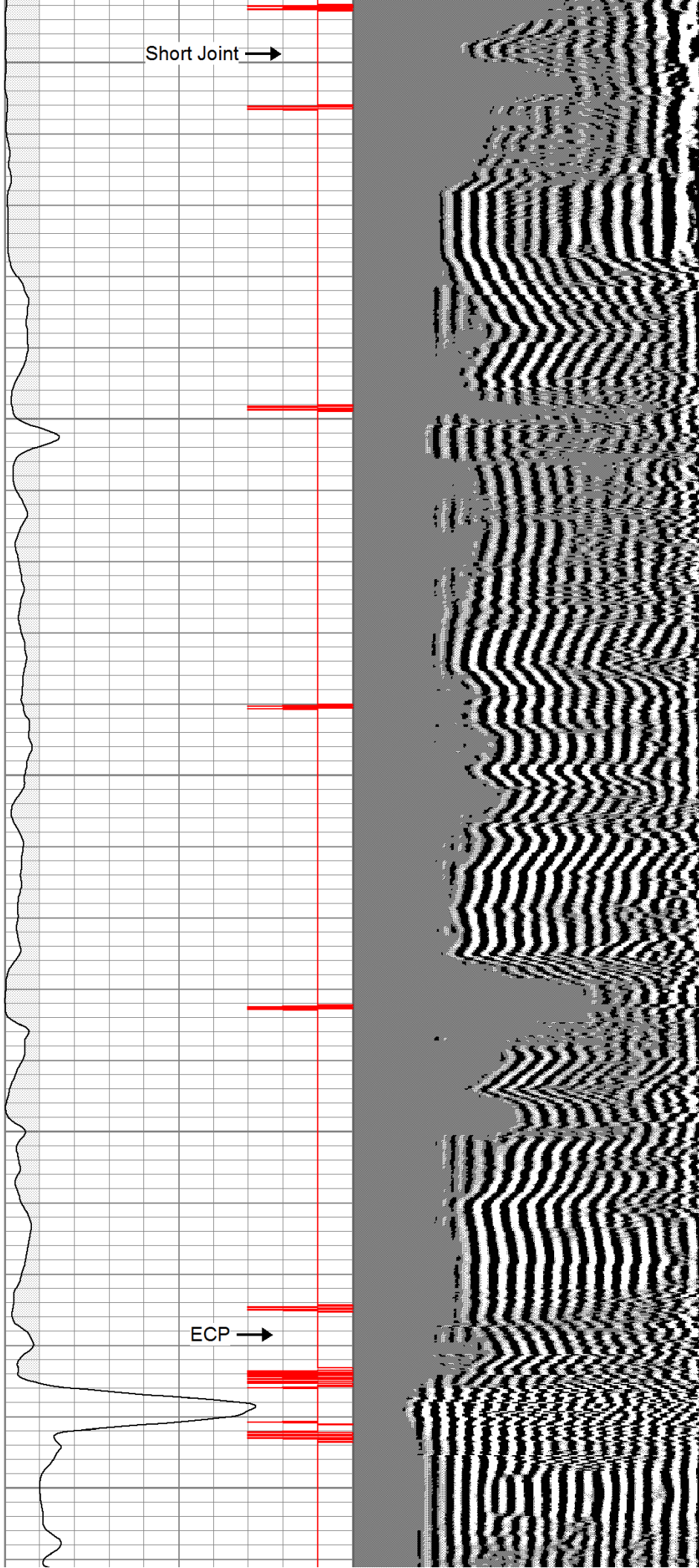
2050

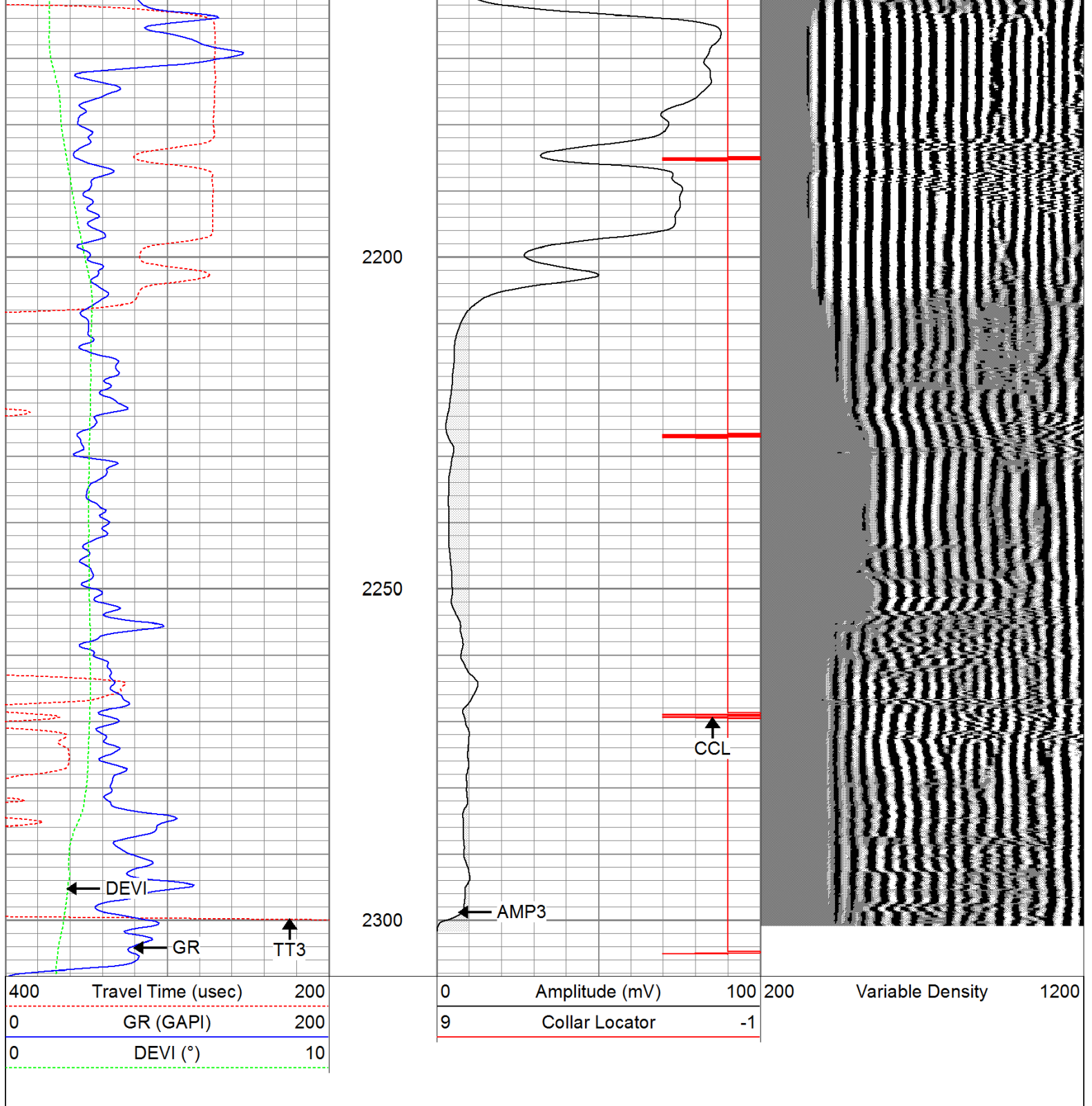
2100

2150

Short Joint →

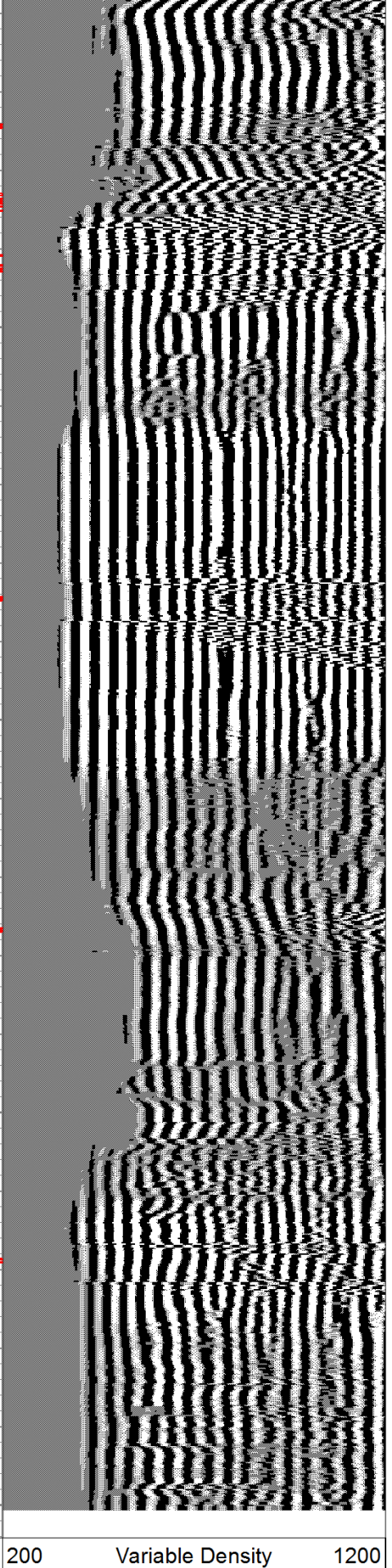
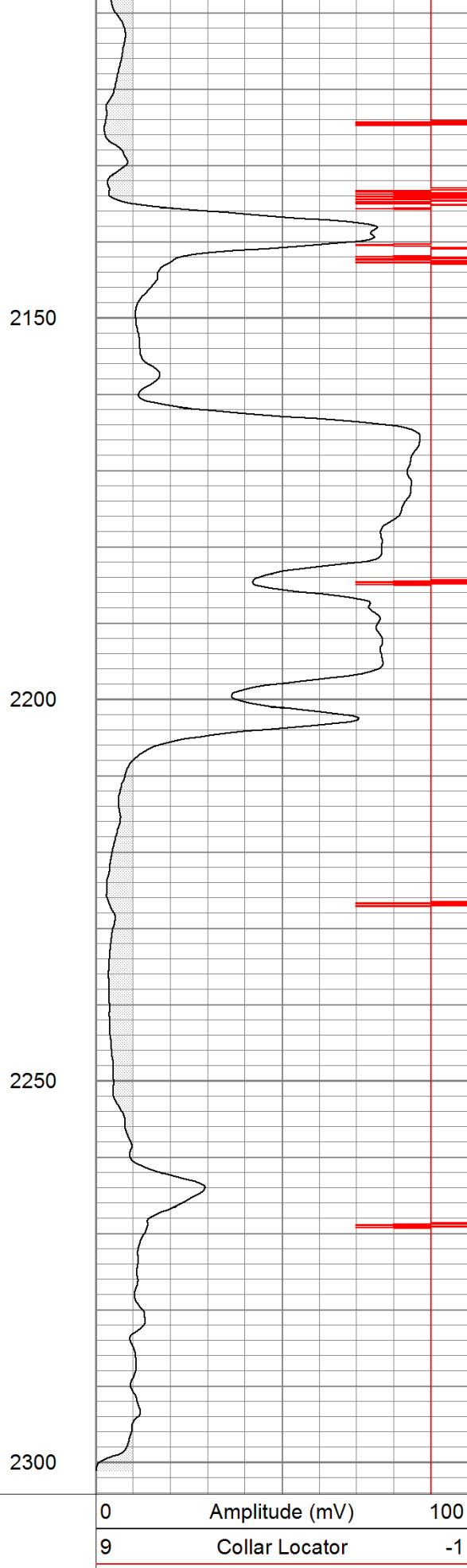
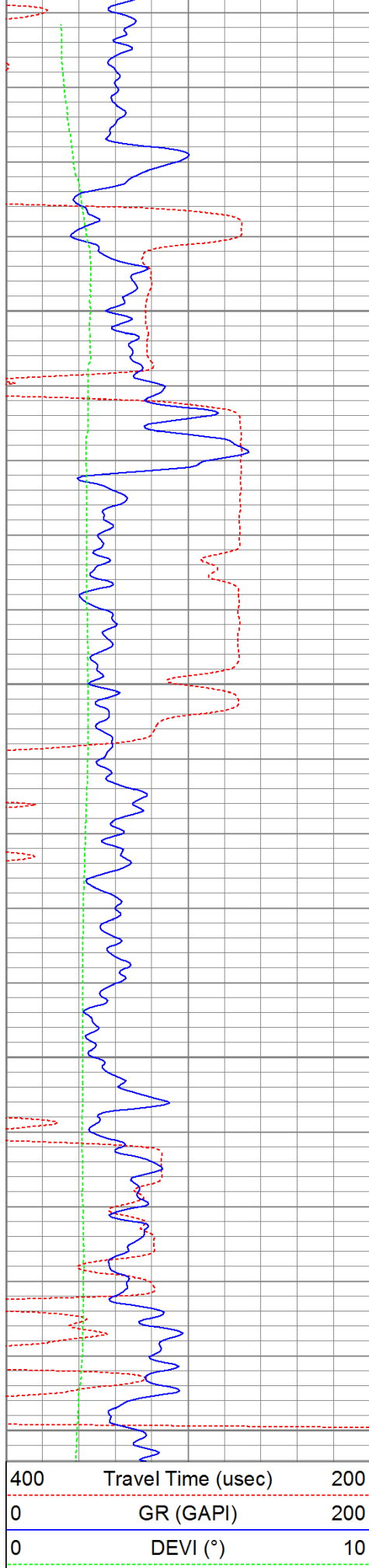
ECP →





Database File: djembe91711b.db
Dataset Pathname: pass1
Presentation Format: cbldig
Dataset Creation: Sat Sep 17 12:21:04 2011 by Log Open-Cased 110302
Charted by: Depth in Feet scaled 1:240

400	Travel Time (usec)	200	0	Amplitude (mV)	100	200	Variable Density	1200
0	GR (GAPI)	200	9	Collar Locator	-1			
0	DEVI (°)	10						



Calibration Report

Database File: djembe91711b.db
 Dataset Pathname: pass1
 Dataset Creation: Sat Sep 17 12:21:04 2011 by Log Open-Cased 110302

Gamma Ray Calibration Report

Serial Number: 080616
 Tool Model: 275D_INC
 Performed: Mon Aug 22 07:24:58 2011

Calibrator Value: 200.0 GAPI

Background Reading: 50.0 cps
 Calibrator Reading: 250.0 cps

Sensitivity: 1.0000 GAPI/cps

Inclinometer Calibration Report

Performed: Mon Aug 22 07:25:54 2011

	Low Read.	High Read.	Low Ref.	High Ref.	
X Accelerometer	-3585.20	3595.40	-1.00	1.00	gee
Y Accelerometer	-3619.40	3520.00	-1.00	1.00	gee
Z Accelerometer					

Cement Bond Log Calibration Report

Serial Number: 081024
 Tool Model: PROBEDIGITALCBL
 Performed: Fri Sep 16 12:47:51 2011

Depth: 90.3483 ft
 Casing Diameter: 5.5 in

3' Spacing 5' Spacing

Signal Zero: 0 0 mV
 Calibrated Amplitude: 85 85 mV
 Reading at Signal Zero: -0.00620117 -0.0065918 V
 Reading in Free Pipe: 1.63113 1.50356 V

Gain: 51.9138 56.2856
 Offset: 0.321926 0.371023

Sensor	Offset (ft)	Schematic	Description	Len (ft)	OD (in)	Wt (lb)
			None	0.75	1.50	5.00
			Star	0.29	1.50	0.50
WVF3	9.04		CBL-PROBEDIGITALCBL (081024) PROBE DIGITAL CBL	8.75	2.75	106.50
WVF5	8.04					

