

Company		Pioneer Natural Resources	
Well	Pointer 43-25		
Field	Purgatoire River		
County	Las Animas	State	Colorado
Location:		APL # : 05 071 09766 00	Other Services
SEC 25 TWP 32S RGE 67W		2634' FNL & 643' FEL	DEVI
Permanent Datum	Ground Level	Elevation	7412'
Log Measured From	Kelly Bushing 4' AGL		
Drilling Measured From	Kelly Bushing		
Date	8-30-11		
Run Number	ONE		
Depth Driller	2480'		
Depth Logger	2412'		
Bottom Logged Interval	2408'		
Top Log Interval	120'		
Open Hole Size	7 7/8		
Type Fluid	water		
Density / Viscosity	///		
Max. Recorded Temp.	///		
Estimated Cement Top	///		
Time Well Ready	R.O.A		
Time Logger on Bottom	3:25 P.M.		
Equipment Number	T590		
Location	Trinidad		
Recorded By	T. Patterson		
Witnessed By	Curtis Adam		
Borehole Record		Tubing Record	
Run Number	Bit	From	To
Casing Record	Size	Wgt/Ft	Top
Surface String	8 5/8"		00
Prot. String			
Production String	5 1/2"		00
Liner			

<<< Fold Here >>>

All interpretations are opinions based on inferences from electrical or other measurements and we cannot and do not guarantee the accuracy or correctness of any interpretation, and we shall not, except in the case of gross or willful negligence on our part, be liable or responsible for any loss, costs, damages, or expenses incurred or sustained by anyone resulting from any interpretation made by any of our officers, agents or employees. These interpretations are also subject to our general terms and conditions set out in our current Price Schedule.

Comments

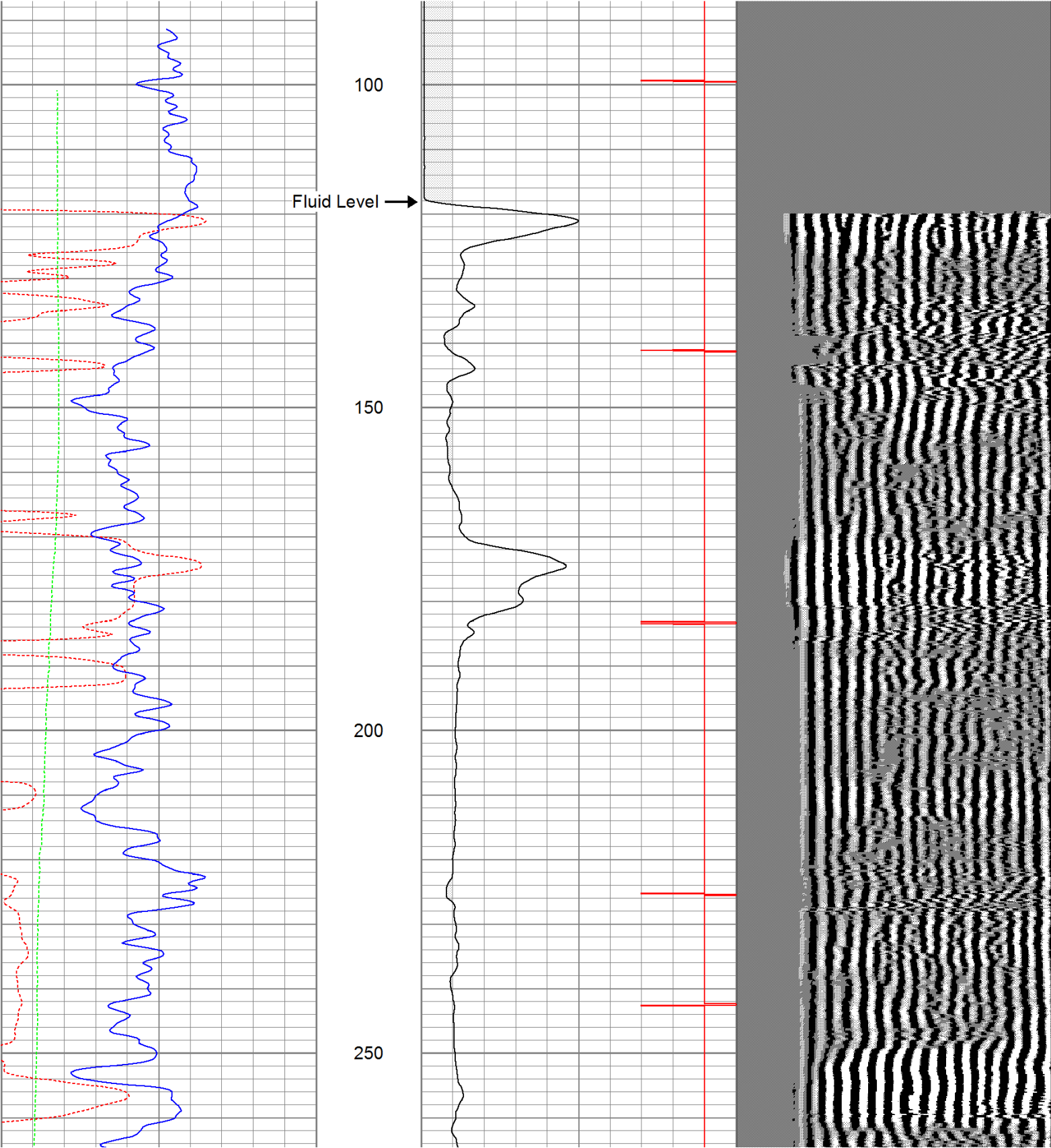
Directions:
Sarcillo to turn off to Sakariason tract, go right, third left after cattlegaurd, go thru gate, at Y go right end on location.

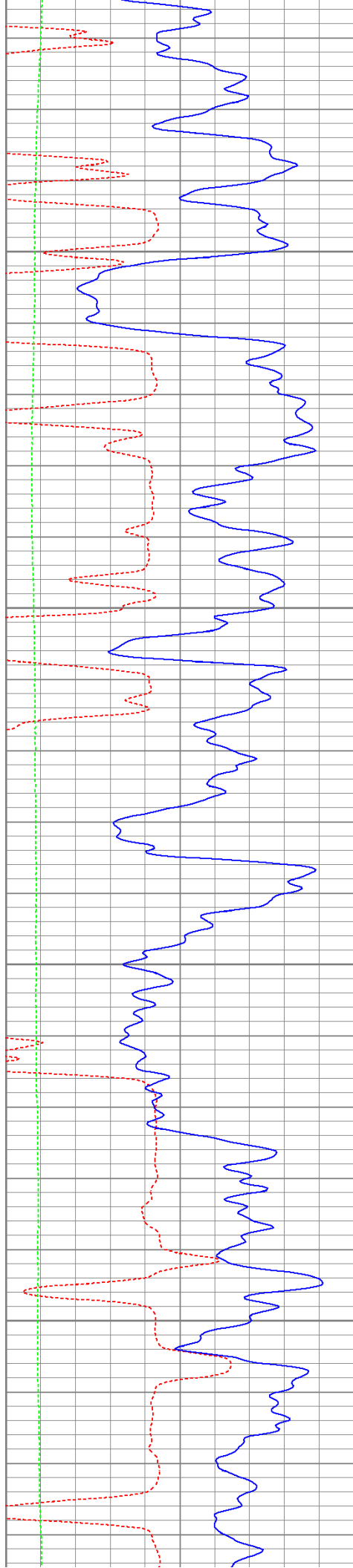
Database File: pointer83011b.db
Dataset Pathname: pass4
Presentation Format: cbldig
Dataset Creation: Tue Aug 30 15:53:26 2011 by Log Open-Cased 110302
Charted by: Depth in Feet scaled 1:240

400	Travel Time (usec)	200
0	GR (GAPI)	200
0	DEVI (°)	10

0	Amplitude (mV)	100
9	Collar Locator	-1

200 Variable Density 1200



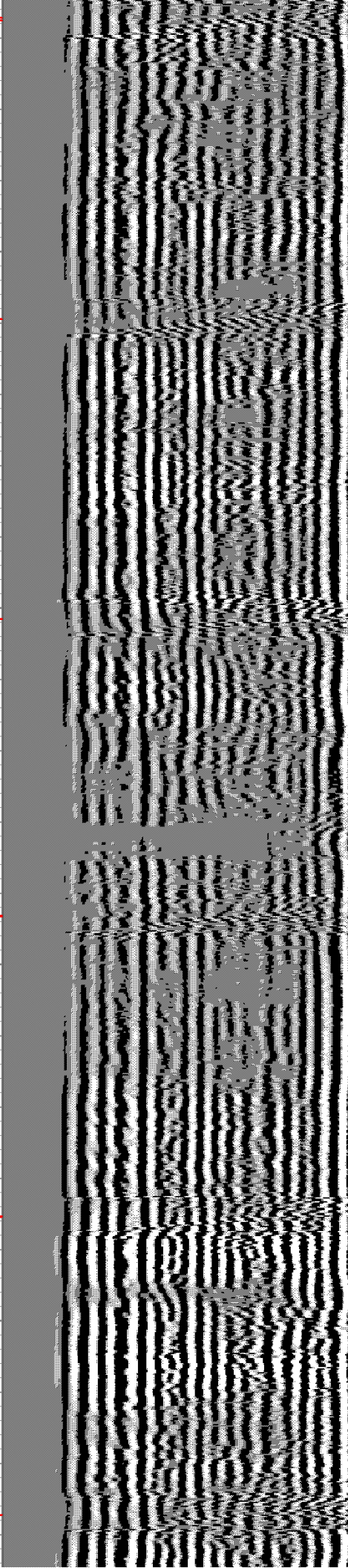
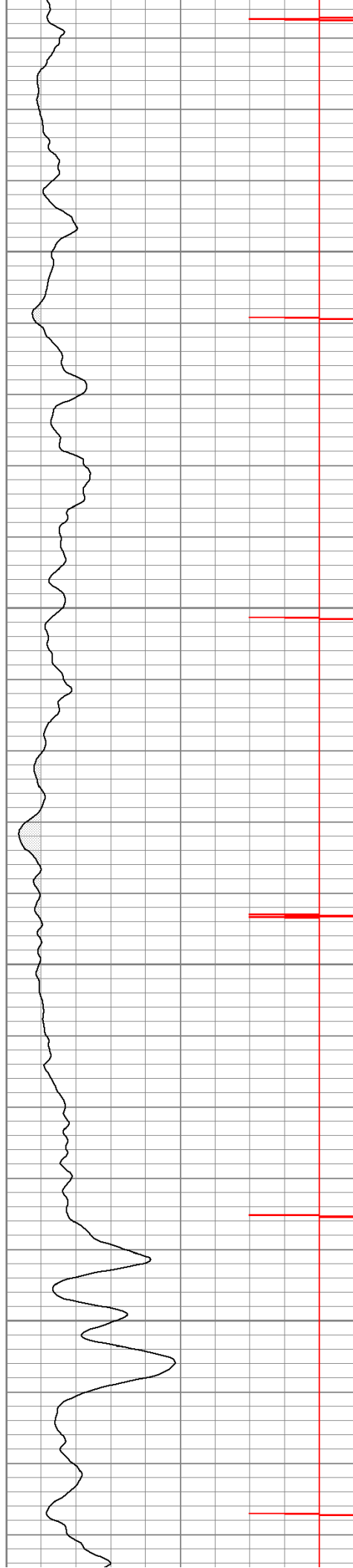


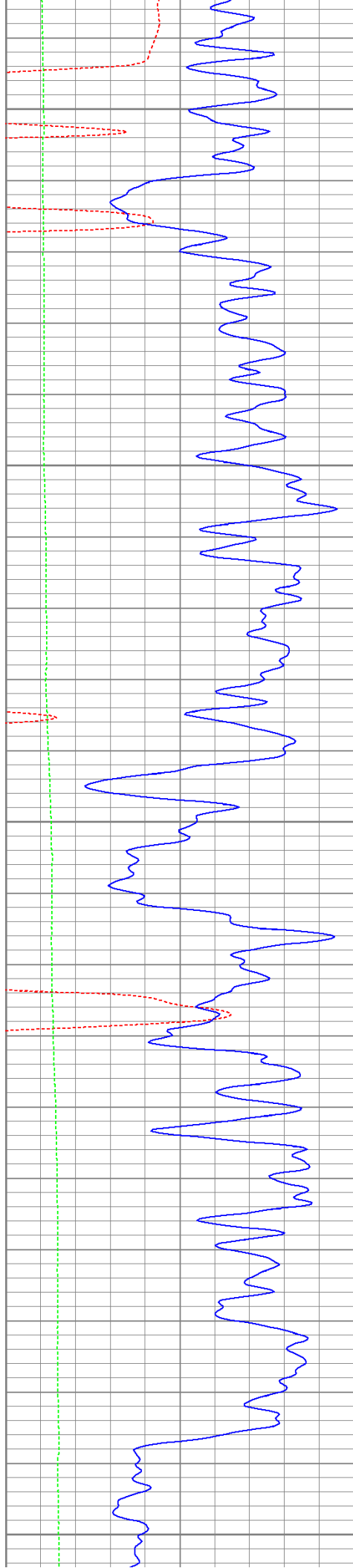
300

350

400

450





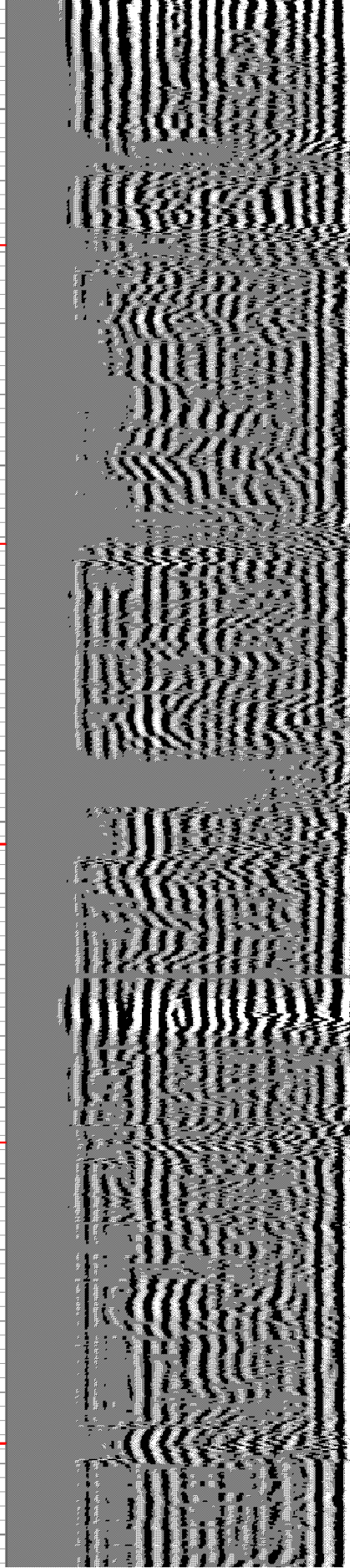
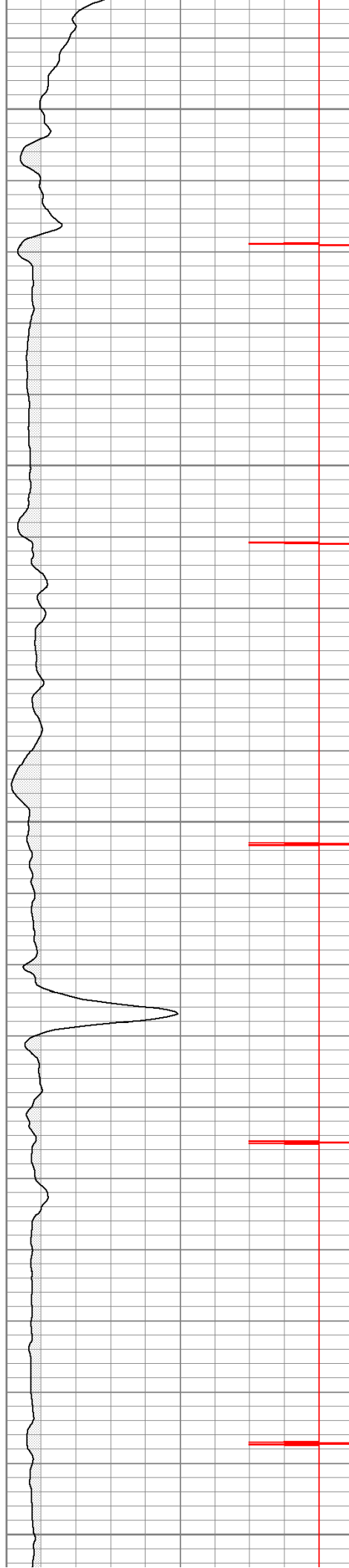
500

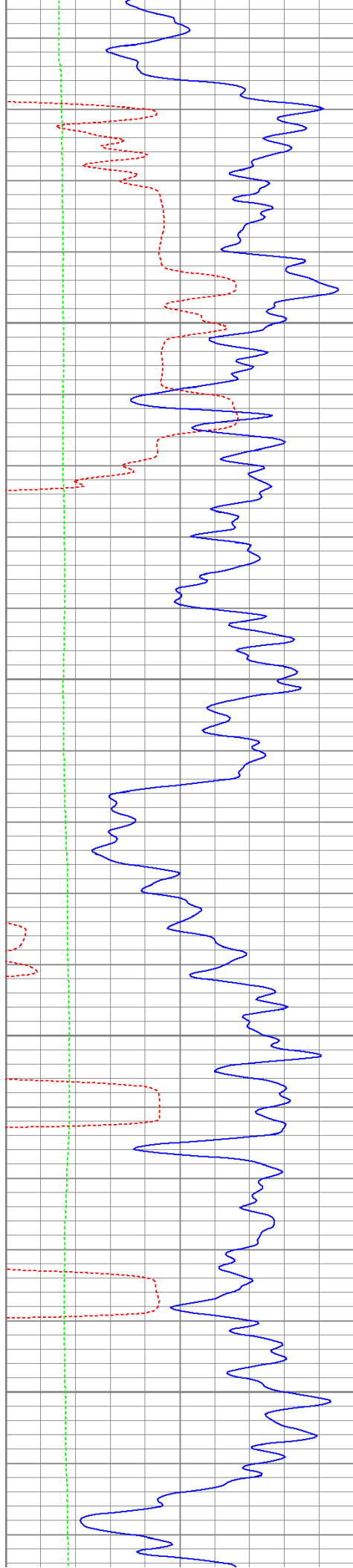
550

600

650

700



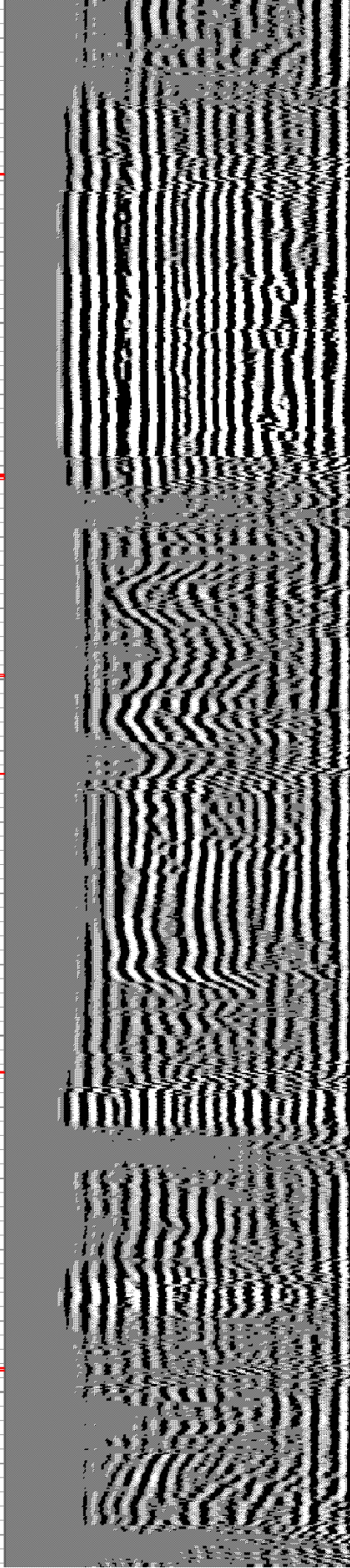
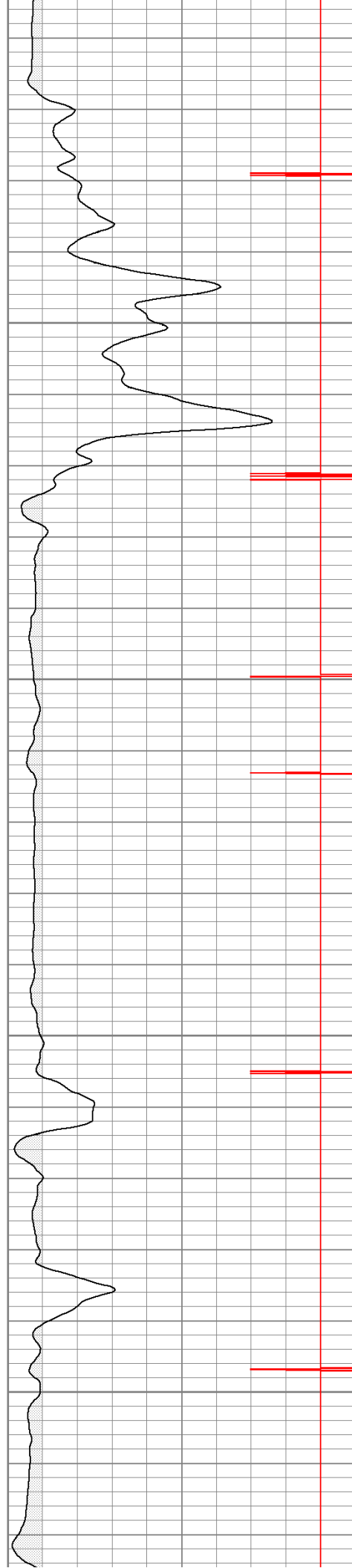


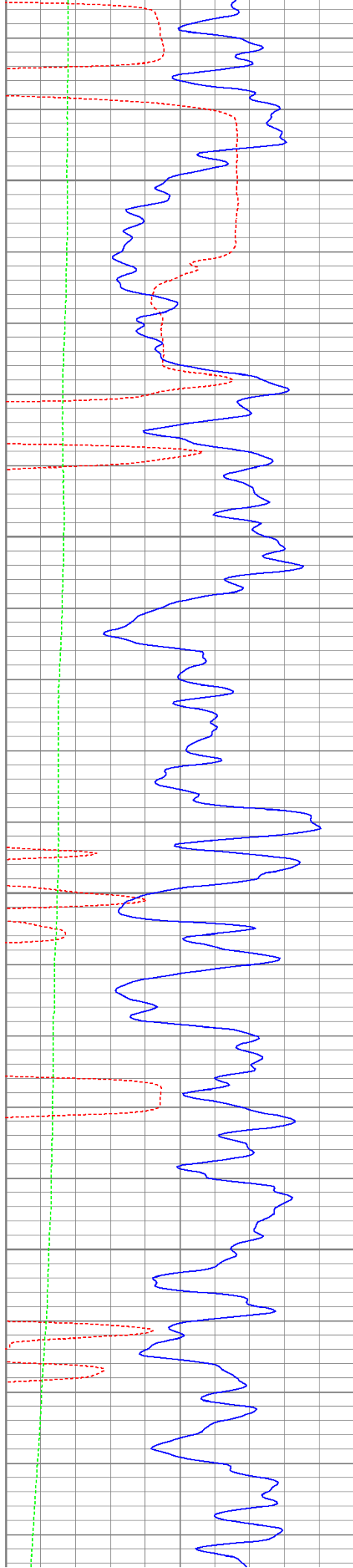
750

800

850

900



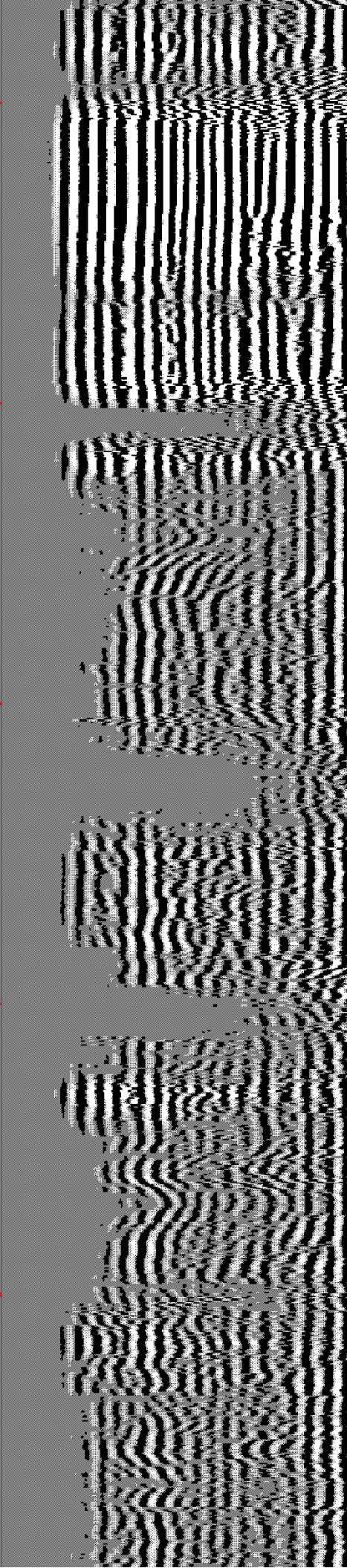
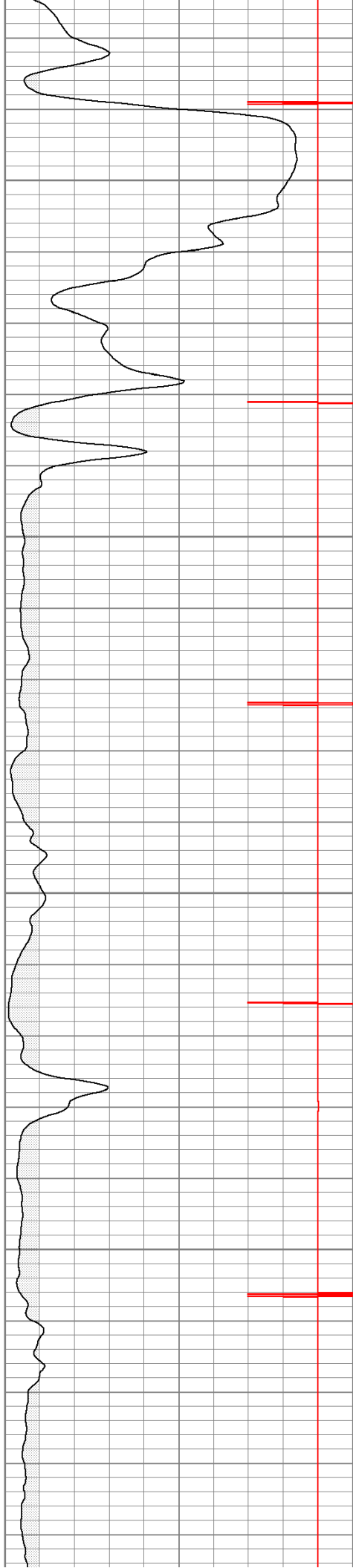


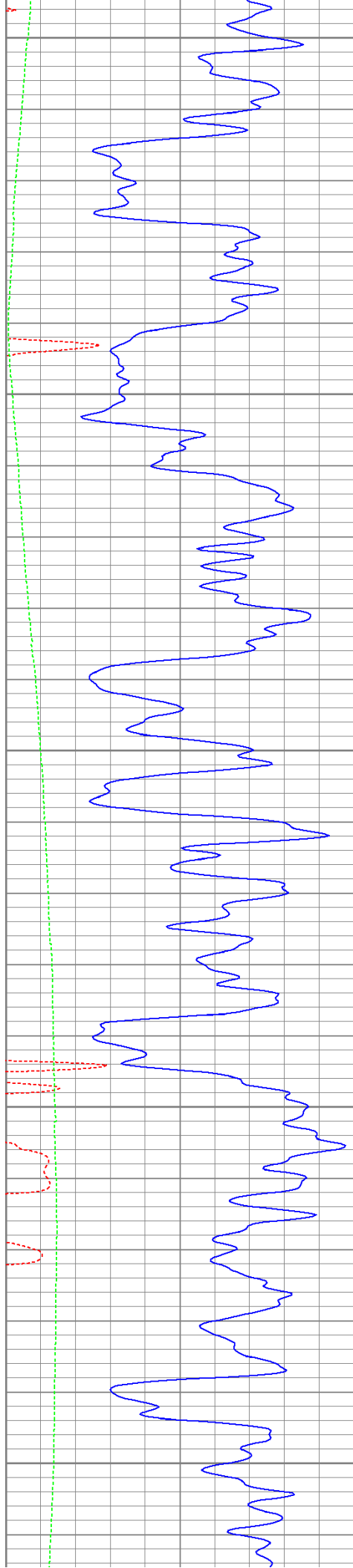
950

1000

1050

1100





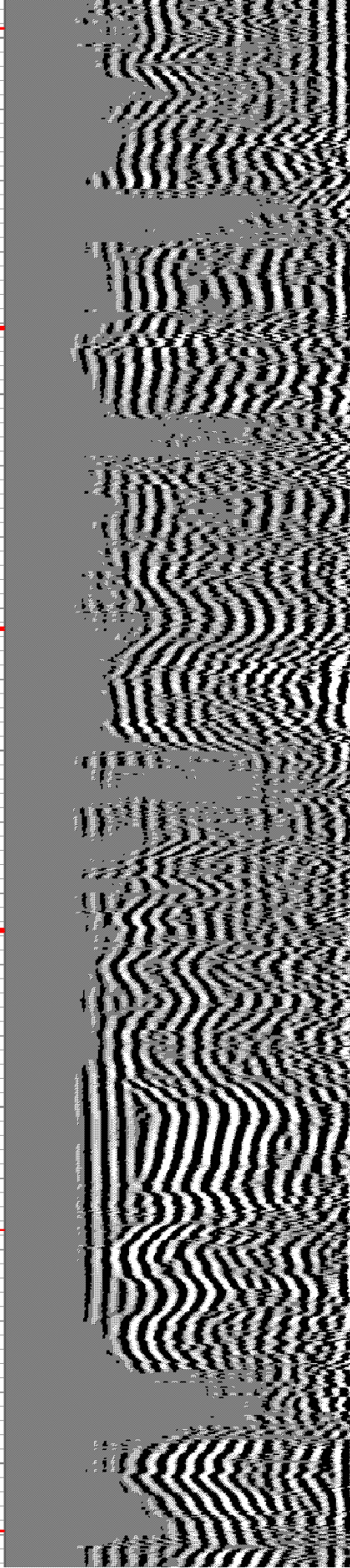
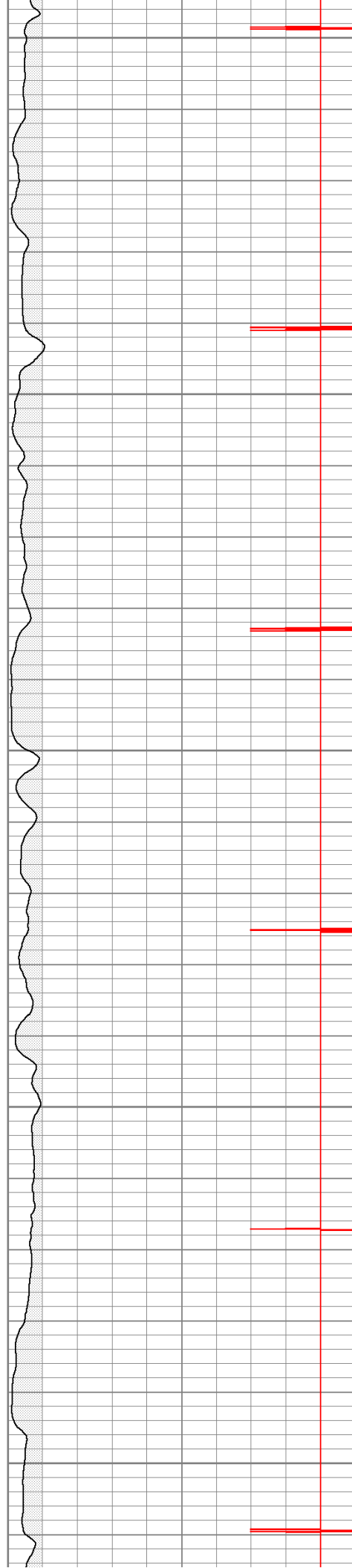
1150

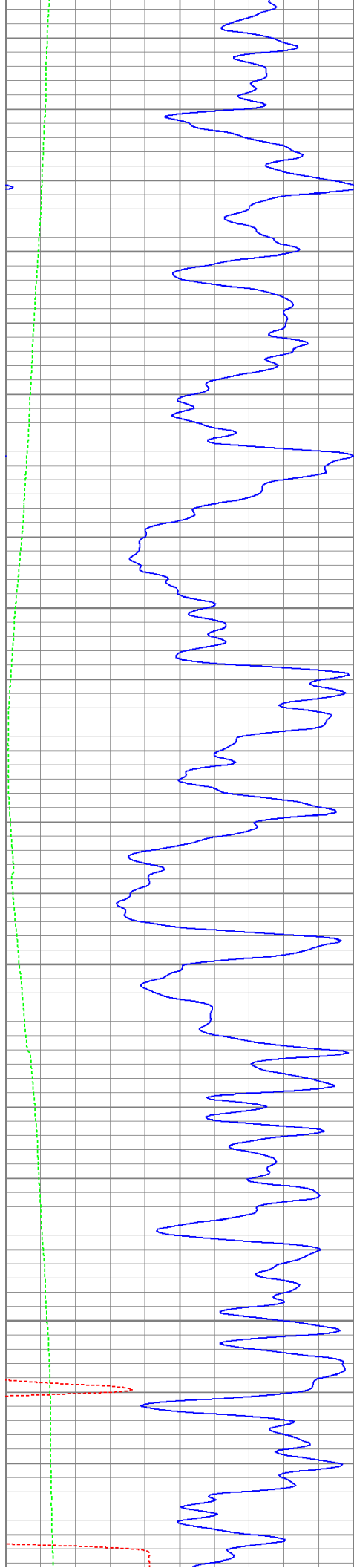
1200

1250

1300

1350



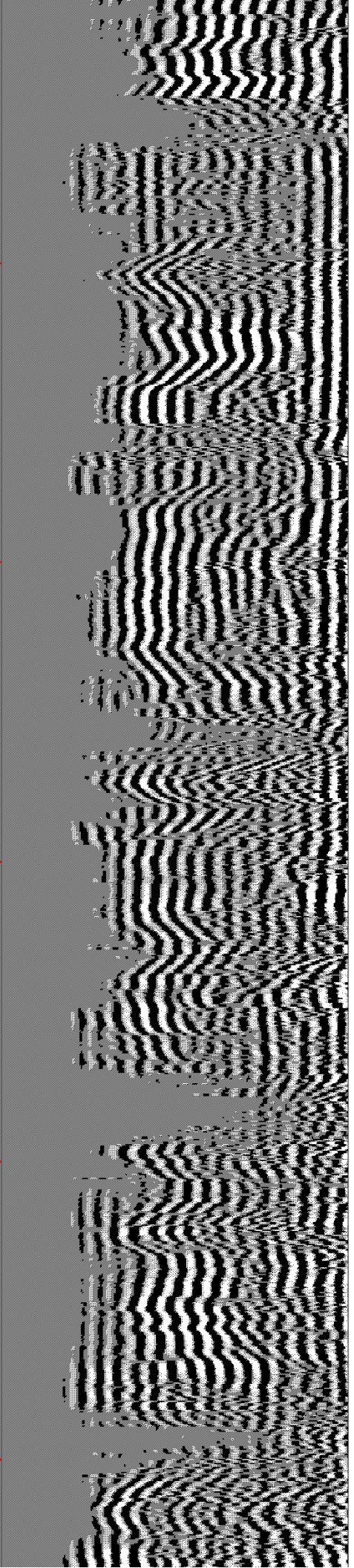
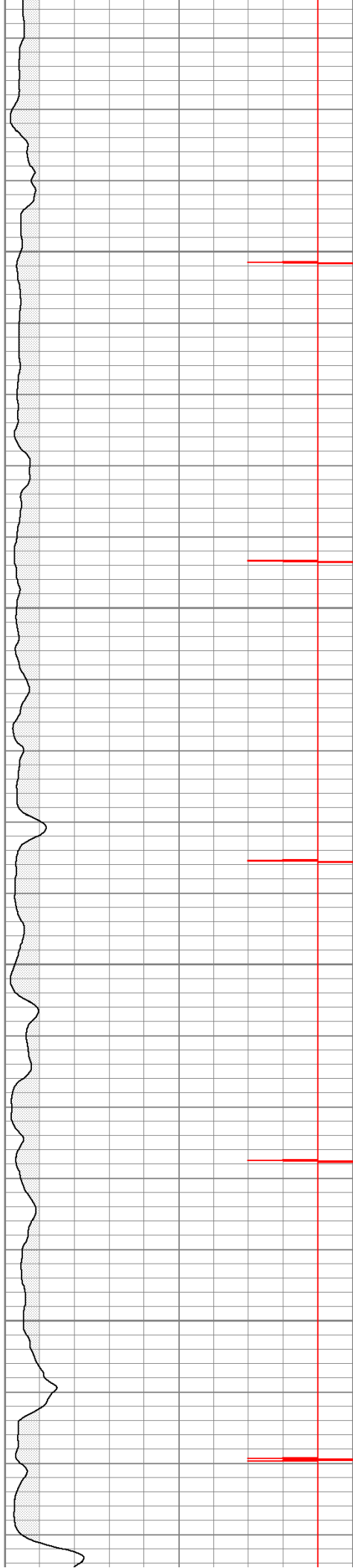


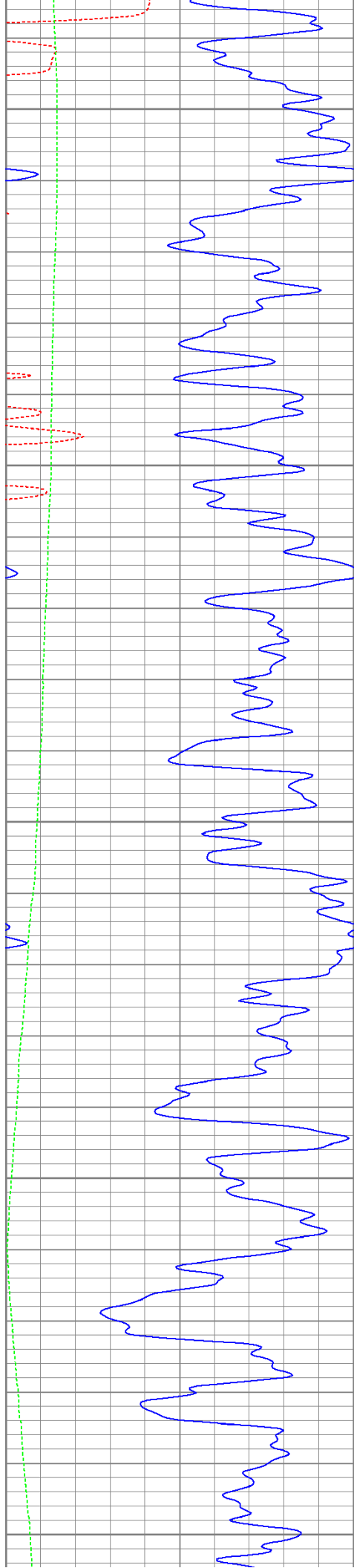
1400

1450

1500

1550





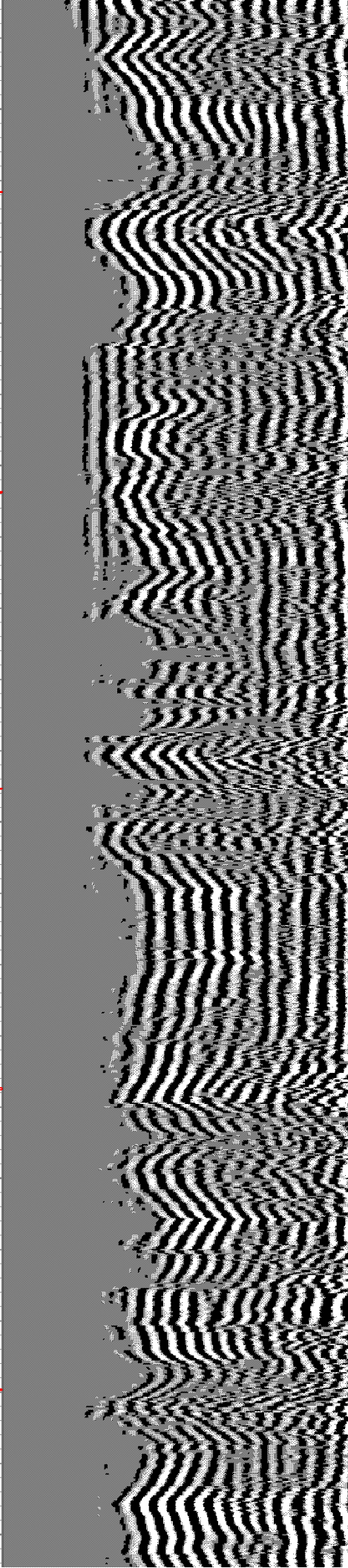
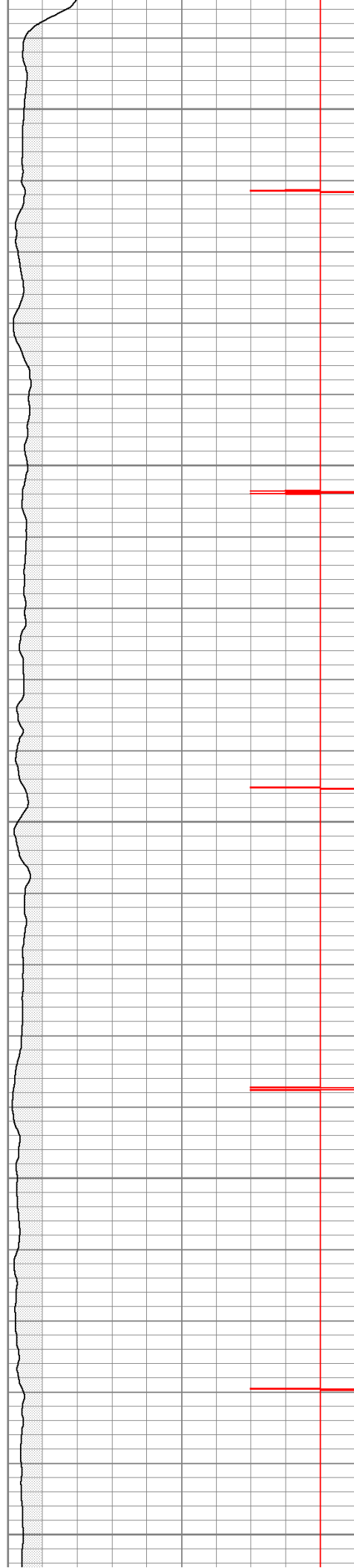
1600

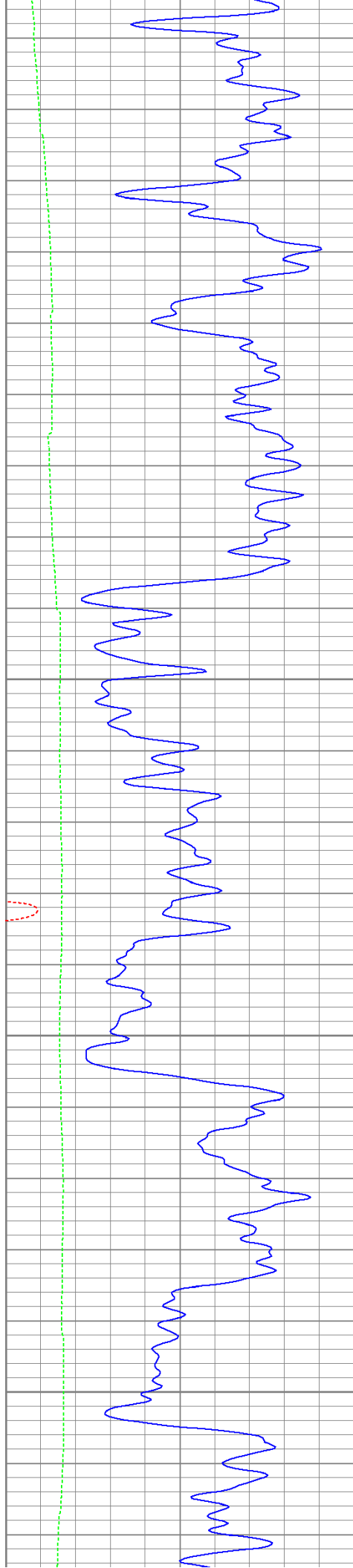
1650

1700

1750

1800



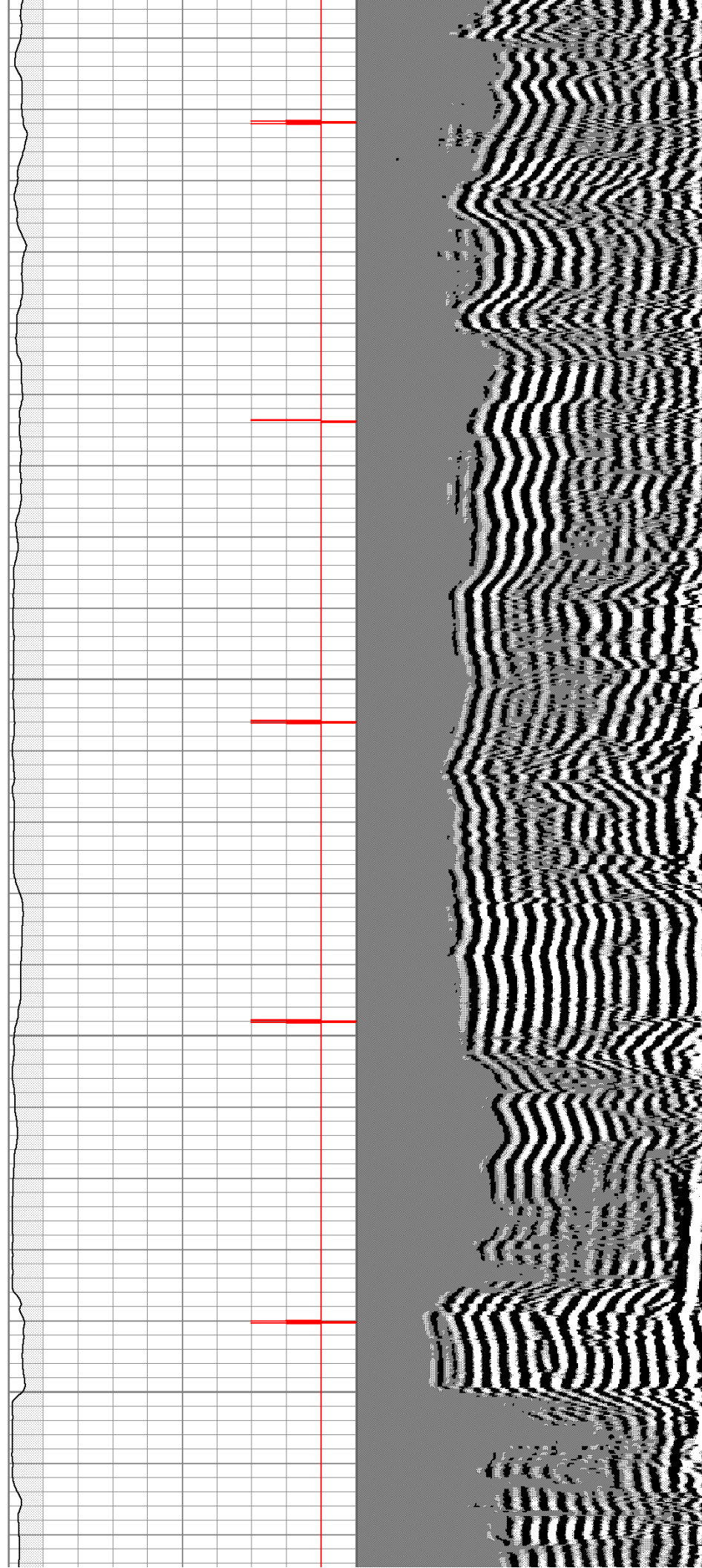


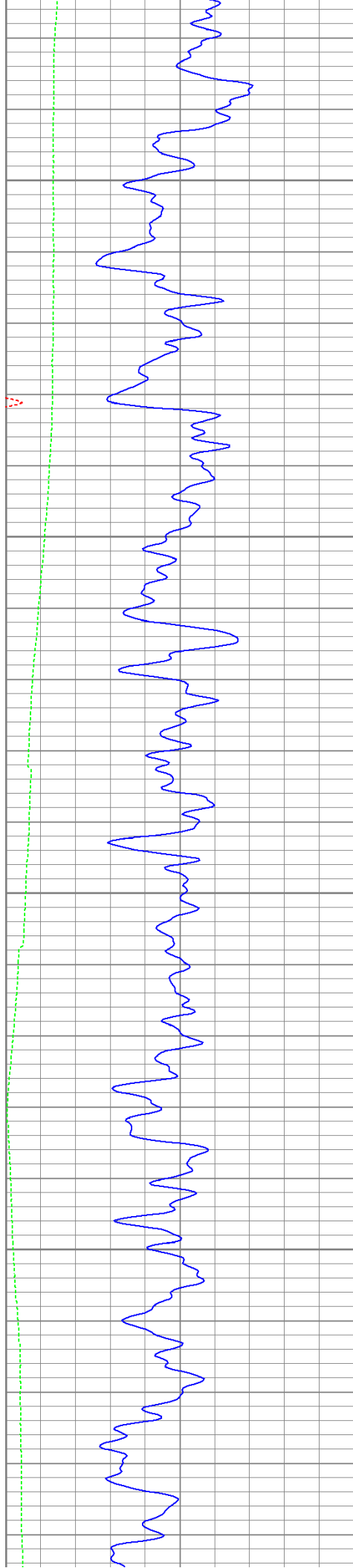
1850

1900

1950

2000





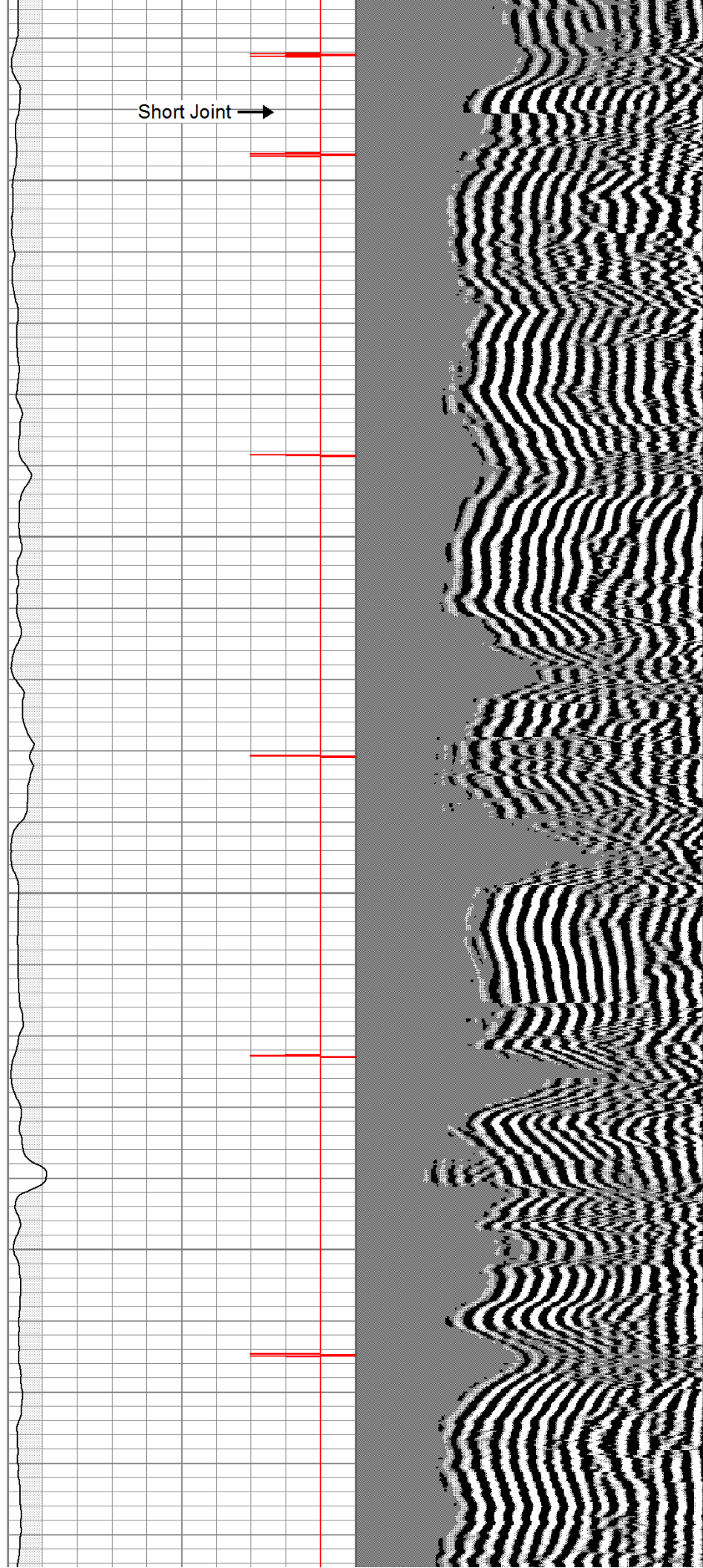
2050

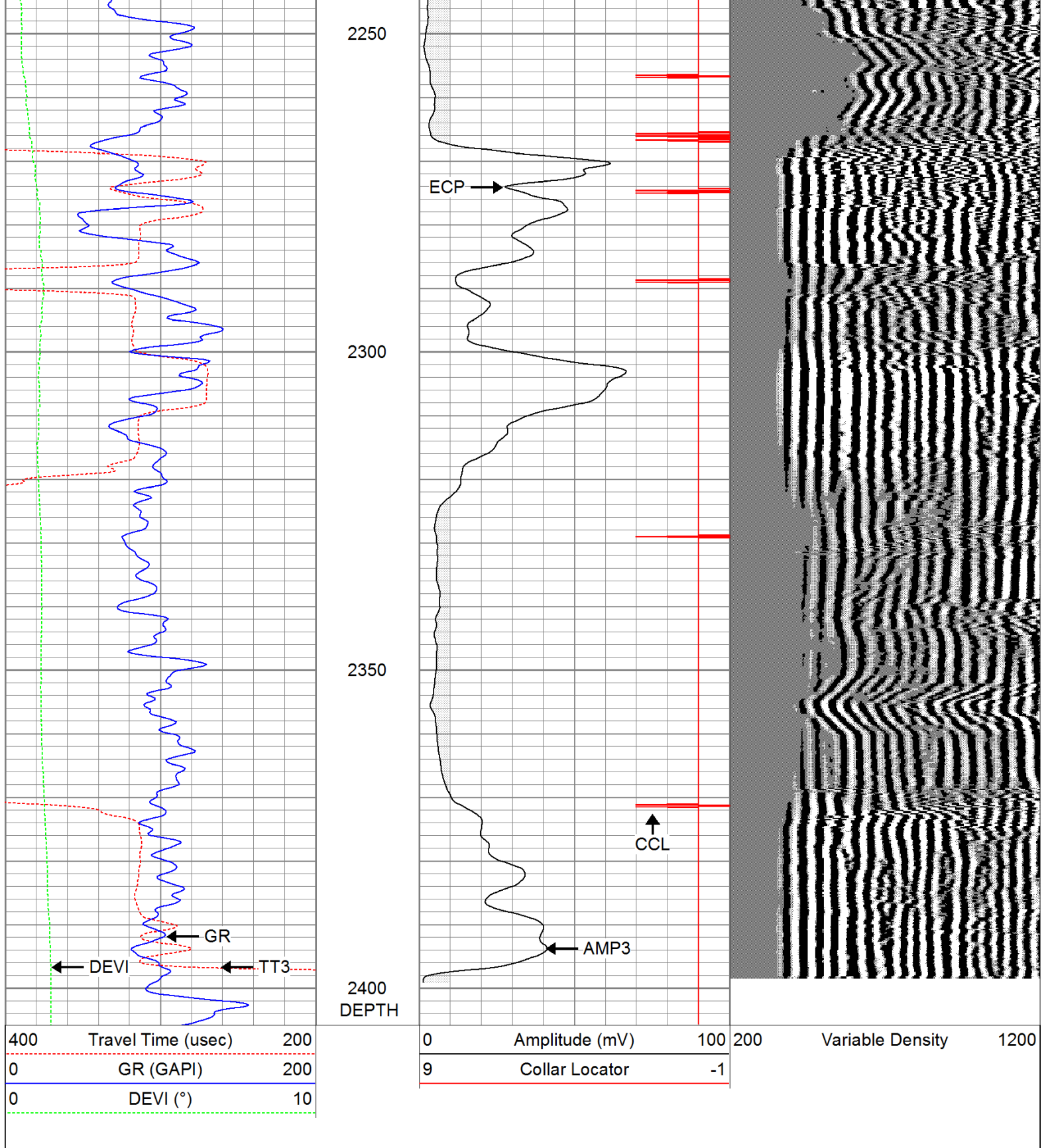
2100

2150

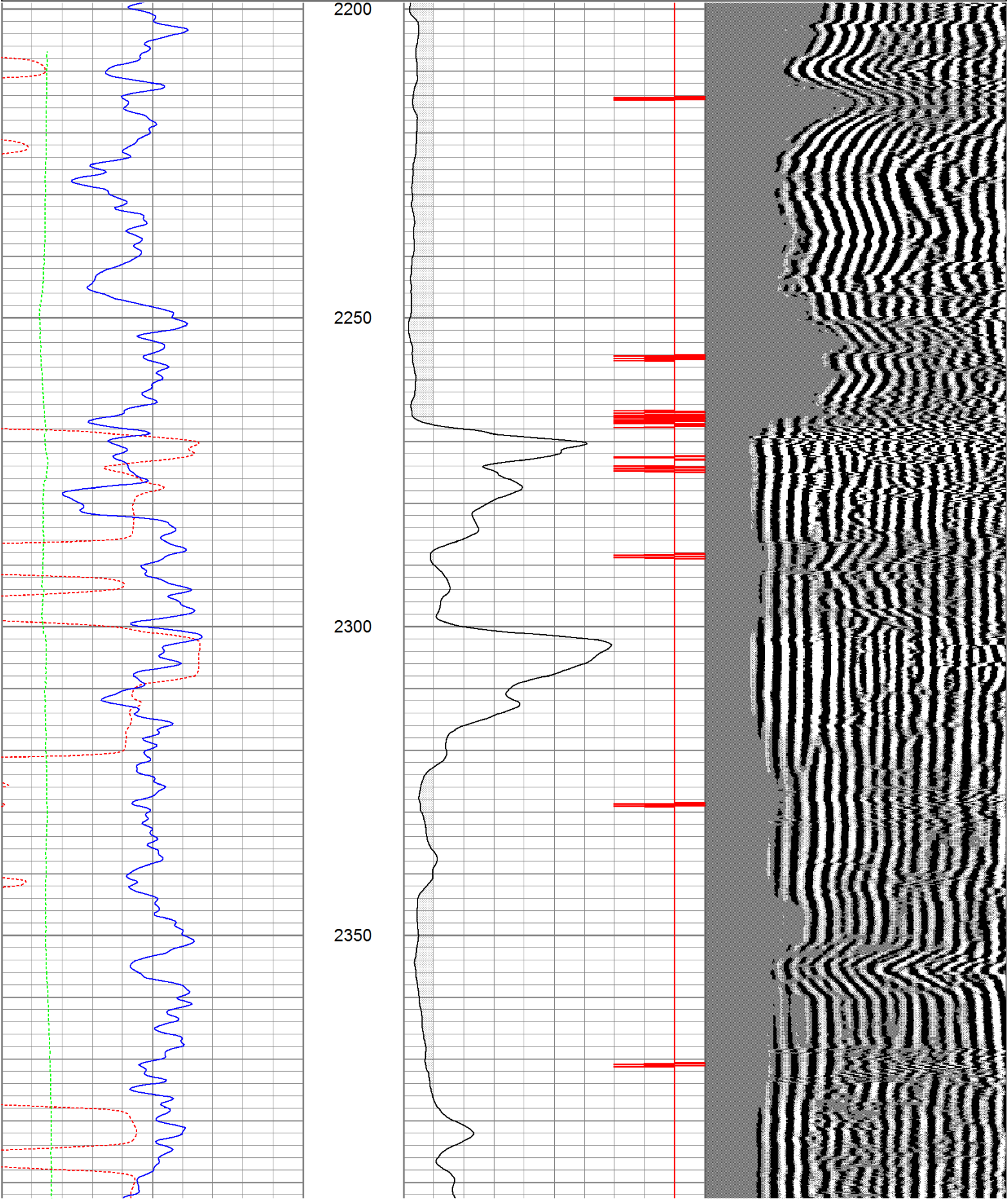
2200

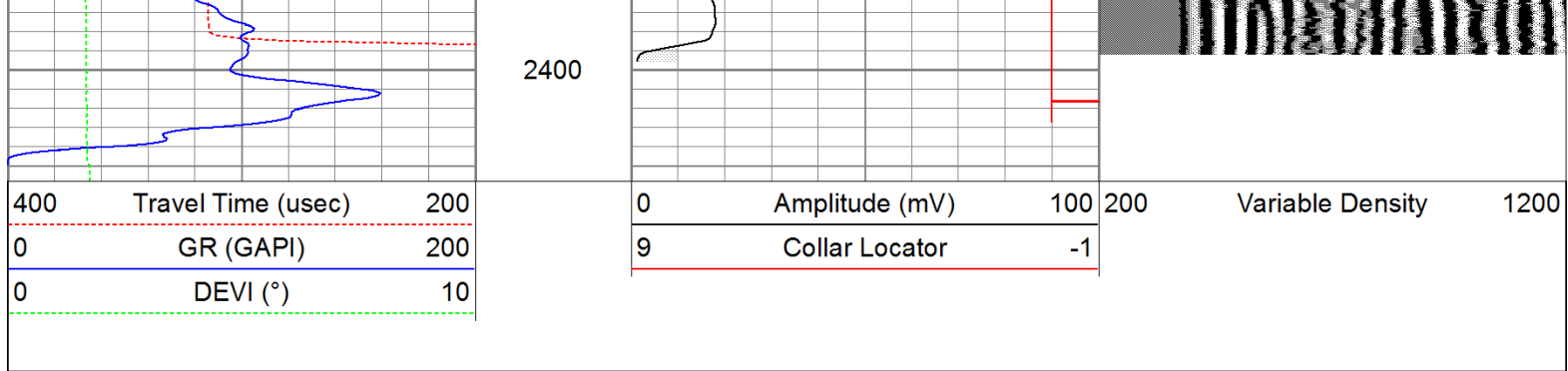
Short Joint →





Charted by:			Depth in Feet scaled 1:240		
400	Travel Time (usec)	200	0	Amplitude (mV)	100
0	GR (GAPI)	200	9	Collar Locator	-1
0	DEVI (°)	10	Variable Density 1200		





Calibration Report					
Database File:	pointer83011b.db				
Dataset Pathname:	pass3				
Dataset Creation:	Tue Aug 30 15:46:22 2011 by Log Open-Cased 110302				
Gamma Ray Calibration Report					
Serial Number:	080616				
Tool Model:	275D_INC				
Performed:	Mon Aug 22 07:24:58 2011				
Calibrator Value:	200.0	GAPI			
Background Reading:	50.0	cps			
Calibrator Reading:	250.0	cps			
Sensitivity:	1.0000	GAPI/cps			
Inclinometer Calibration Report					
Performed:	Mon Aug 22 07:25:54 2011				
	Low Read.	High Read.	Low Ref.	High Ref.	
X Accelerometer	-3585.20	3595.40	-1.00	1.00	gee
Y Accelerometer	-3619.40	3520.00	-1.00	1.00	gee
Z Accelerometer					
Cement Bond Log Calibration Report					
Serial Number:	081024				
Tool Model:	PROBEDIGITALCBL				
Performed:	Mon Aug 22 07:24:34 2011				
Depth:	138.299	ft			
Casing Diameter:	5.5	in			
	3' Spacing	5' Spacing			
Signal Zero:	1	0	mV		
Calibrated Amplitude:	85	85	mV		
Reading at Signal Zero:	-0.00625	-0.00703125	V		
Reading in Free Pipe:	1.56453	1.18582	V		
Gain:	53.4766	71.2581			
Offset:	1.33423	0.501034			

Sensor	Offset (ft)	Schematic	Description	Len (ft)	OD (in)	Wt (lb)
			None	0.75	1.50	5.00

