

T7S, R96W, 6th P.M. WILLIAMS PRODUCTION RMT COMPANY

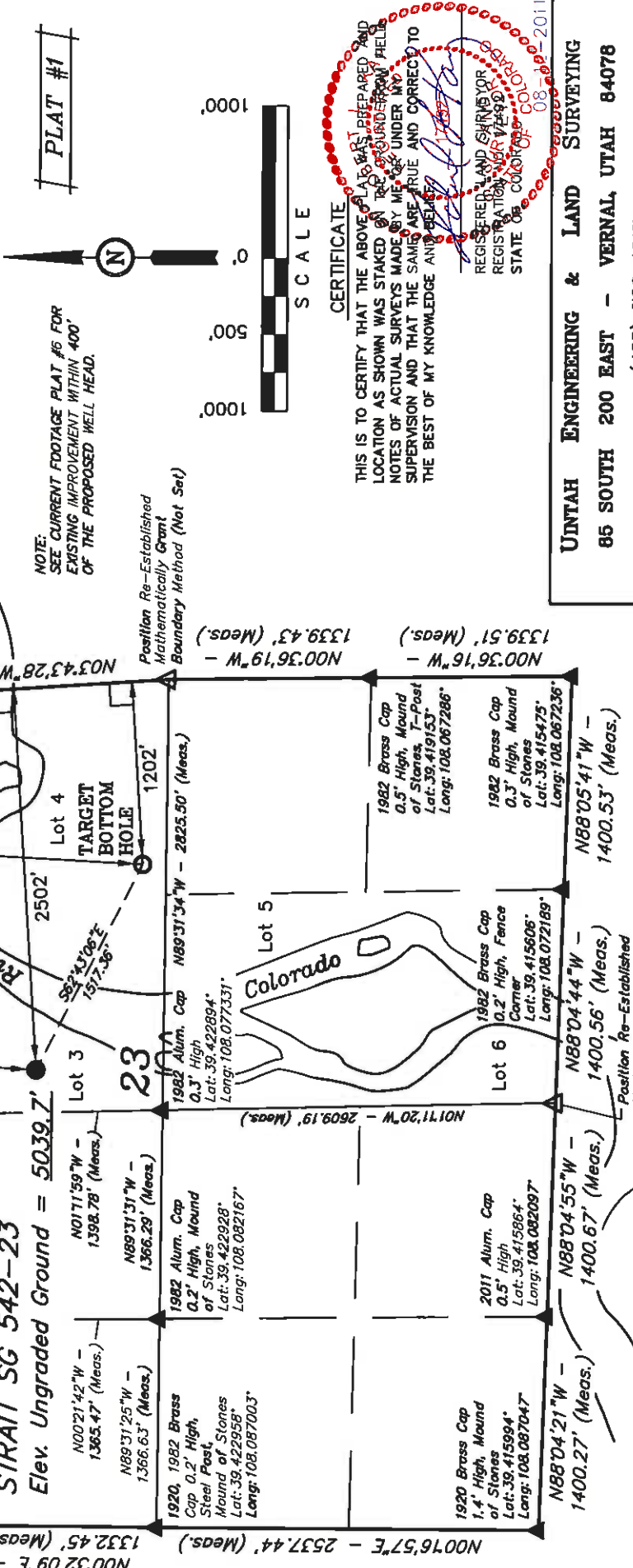
Well location, STRAIT SG 542-23, located as shown in Lot 3 of Section 23, T7S, R96W, 6th P.M., Garfield County, Colorado.

BASIS OF ELEVATION

SPOT ELEVATION AT THE NORTHWEST CORNER OF SECTION 30, T5S, R95W, 6th P.M. TAKEN FROM THE FORKED GULCH QUADRANGLE, COLORADO, GARFIELD COUNTY, 7.5 MINUTE SERIES (TOPOGRAPHICAL MAP) PUBLISHED BY THE UNITED STATES DEPARTMENT OF THE INTERIOR, GEOLOGICAL SURVEY. SAID ELEVATION IS MARKED AS BEING 5966 FEET.

BASIS OF BEARINGS

BASIS OF BEARINGS IS A G.P.S. OBSERVATION.



CERTIFICATE

THIS IS TO CERTIFY THAT THE ABOVE PLAT WAS PREPARED AND LOCATION AS SHOWN WAS MADE ON THE GROUND-BY FIELD NOTES OF ACTUAL SURVEYS MADE BY ME OR UNDER MY SUPERVISION AND THAT THE SAME ARE TRUE AND CORRECT TO THE BEST OF MY KNOWLEDGE AND BELIEF.

REGISTERED LAND SURVEYOR
REGISTRATION NO. 18749
STATE OF COLORADO
08-09-2011

UTAH ENGINEERING & LAND SURVEYING

85 SOUTH 200 EAST - VERNAL, UTAH 84078
(435) 789-1017

LEGEND:

- = 90° SYMBOL
- = PROPOSED WELL HEAD.
- = SECTION CORNERS LOCATED.

SCALE 1" = 1000'

DATE SURVEYED: 04-14-11
DATE DRAWN: 08-11-11

PARTY B.J. B.B. D.R.B. G.L.O. PLAT

WEATHER WARM

PDOP = 1.8

NAD 83 (SURFACE LOCATION)
LATITUDE = 39°25'30.89" (36.425192)
LONGITUDE = 108°04'35.03" (108.076403)
STATE PLANE - COLO. CENTRAL - NAD 83
N = 1590075.890
E = 2273631.985

NAD 83 (TARGET BOTTOM HOLE)
LATITUDE = 39°25'23.82" (39.423283)
LONGITUDE = 108°04'17.87" (108.071631)
STATE PLANE - COLO. CENTRAL - NAD 83
N = 1598342.000
E = 2273631.600