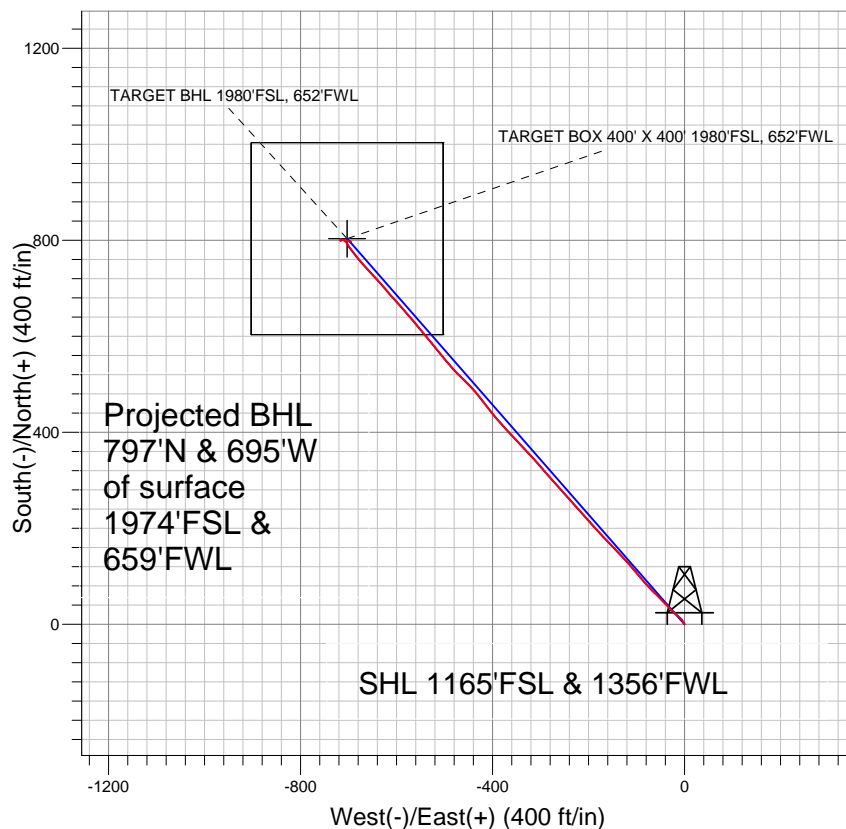


## Synergy Resources



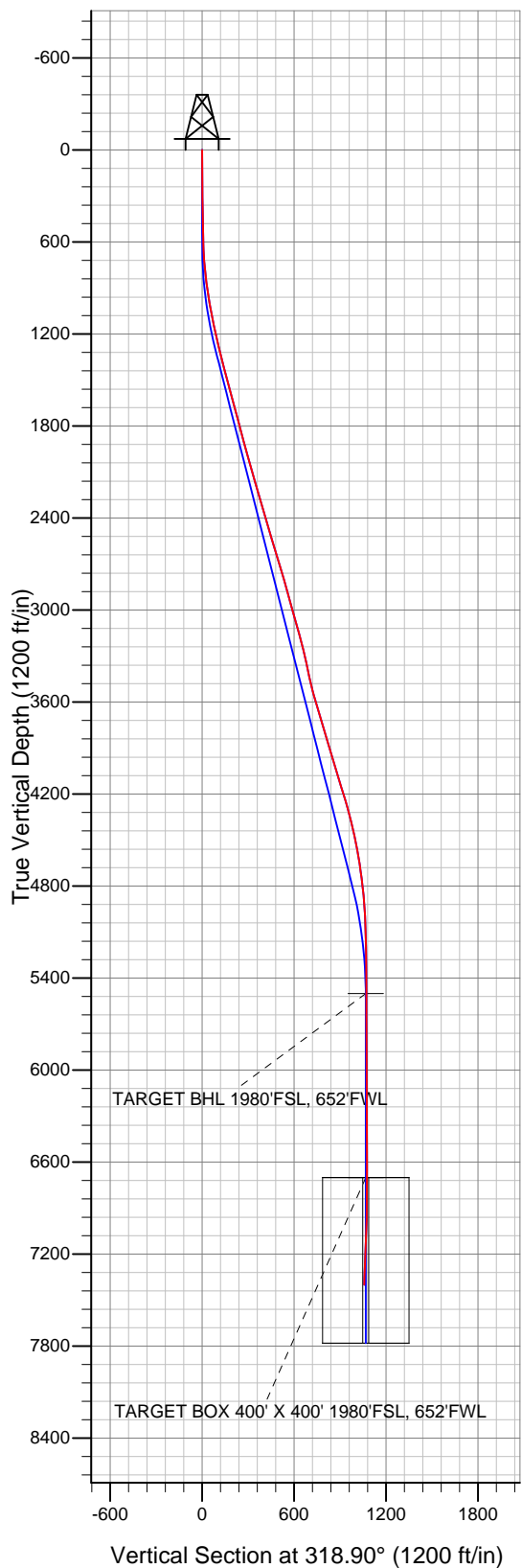
### LEGEND

- x RBF 13-15D, Wellbore #1, Plan #2 (8-31-10) V0
- Wellbore #1
- Survey #1

## Final Survey Plot

Projected Final Survey -  
 7535'MD & 7399'TVD @ 1058' VS  
 2.9 deg Inc 101.3 deg AZ

Project: SEC.15-T6N-R67W  
 Site: RBF 24-15D Pad Sec.15-T6N-R67W  
 Well: RBF 13-15D  
 Plan: Wellbore #1





## **Directional**

### **Synergy Resources**

**SEC.15-T6N-R67W**

**RBF 24-15D Pad Sec.15-T6N-R67W**

**RBF 13-15D**

**Wellbore #1**

**Survey: Survey #1**

### **Standard Survey Report**

**26 October, 2010**

Survey	Wellbore Data									
	Measured Depth (ft)	Inclination (°)	Azimuth (°)	Vertical Depth (ft)	+N/-S (ft)	+E/-W (ft)	Vertical Section (ft)	Dogleg Rate (°/100ft)	Build Rate (°/100ft)	Turn Rate (°/100ft)
Main Survey	0.0	0.00	0.00	0.0	0.0	0.0	0.0	0.00	0.00	0.00
	619.0	1.60	330.40	618.9	7.5	-4.3	8.5	0.26	0.26	0.00
	713.0	4.10	315.00	712.8	11.0	-7.3	13.1	2.76	2.66	-16.38
	806.0	6.00	309.60	805.4	16.5	-13.4	21.2	2.10	2.04	-5.81
	900.0	8.50	315.30	898.7	24.6	-22.1	33.0	2.76	2.66	6.06
	994.0	9.70	315.30	991.5	35.1	-32.5	47.8	1.28	1.28	0.00
	1,088.0	11.30	316.00	1,083.9	47.4	-44.5	64.9	1.71	1.70	0.74
	1,181.0	12.10	316.10	1,175.0	61.0	-57.6	83.8	0.86	0.86	0.11
	1,275.0	13.50	314.30	1,266.6	75.7	-72.3	104.6	1.55	1.49	-1.91
	1,368.0	13.60	319.90	1,357.1	91.7	-87.1	126.3	1.41	0.11	6.02
	1,461.0	15.30	320.40	1,447.1	109.5	-101.9	149.5	1.83	1.83	0.54
	1,555.0	14.90	317.70	1,537.9	128.0	-118.0	174.0	0.86	-0.43	-2.87
	1,649.0	15.40	316.30	1,628.6	145.9	-134.7	198.5	0.66	0.53	-1.49

<b>Company:</b>	Synergy Resources	<b>Local Co-ordinate Reference:</b>	Well RBF 13-15D
<b>Project:</b>	SEC.15-T6N-R67W	<b>TVD Reference:</b>	WELL @ 4794.0ft (Original Well Elev)
<b>Site:</b>	RBF 24-15D Pad Sec.15-T6N-R67W	<b>MD Reference:</b>	WELL @ 4794.0ft (Original Well Elev)
<b>Well:</b>	RBF 13-15D	<b>North Reference:</b>	True
<b>Wellbore:</b>	Wellbore #1	<b>Survey Calculation Method:</b>	Minimum Curvature
<b>Design:</b>	Wellbore #1	<b>Database:</b>	Landmark

Survey										
Measured Depth (ft)	Inclination (°)	Azimuth (°)	Vertical Depth (ft)	+N/-S (ft)	+E/-W (ft)	Vertical Section (ft)	Dogleg Rate (°/100ft)	Build Rate (°/100ft)	Turn Rate (°/100ft)	
1,742.0	15.50	316.50	1,718.2	163.9	-151.8	223.3	0.12	0.11	0.22	
1,836.0	14.40	316.10	1,809.1	181.4	-168.6	247.5	1.18	-1.17	-0.43	
1,930.0	15.00	318.40	1,900.0	198.9	-184.8	271.4	0.89	0.64	2.45	
2,024.0	15.90	319.50	1,990.6	217.8	-201.2	296.4	1.01	0.96	1.17	
2,118.0	15.80	317.00	2,081.0	237.0	-218.3	322.1	0.73	-0.11	-2.66	
2,212.0	16.00	316.60	2,171.4	255.7	-235.9	347.8	0.24	0.21	-0.43	
2,306.0	16.20	319.10	2,261.7	275.1	-253.4	373.9	0.77	0.21	2.66	
2,399.0	15.60	319.20	2,351.2	294.3	-270.1	399.3	0.65	-0.65	0.11	
2,493.0	17.20	318.20	2,441.3	314.3	-287.6	425.9	1.73	1.70	-1.06	
2,587.0	17.50	318.90	2,531.1	335.3	-306.1	453.9	0.39	0.32	0.74	
2,680.0	16.70	316.50	2,620.0	355.5	-324.5	481.2	1.15	-0.86	-2.58	
2,774.0	15.70	316.70	2,710.2	374.6	-342.6	507.4	1.07	-1.06	0.21	
2,868.0	16.40	317.50	2,800.6	393.6	-360.2	533.4	0.78	0.74	0.85	
2,961.0	15.90	317.70	2,889.9	412.7	-377.7	559.3	0.54	-0.54	0.22	
3,055.0	14.90	319.00	2,980.5	431.3	-394.3	584.2	1.13	-1.06	1.38	
3,149.0	15.70	323.90	3,071.2	450.7	-409.7	609.0	1.62	0.85	5.21	
3,242.0	16.10	321.60	3,160.6	471.0	-425.1	634.4	0.80	0.43	-2.47	
3,336.0	14.20	318.10	3,251.4	489.8	-440.9	659.0	2.24	-2.02	-3.72	
3,430.0	12.00	312.40	3,342.9	505.0	-455.8	680.2	2.71	-2.34	-6.06	
3,524.0	12.40	316.00	3,434.8	518.8	-470.1	700.0	0.91	0.43	3.83	
3,618.0	14.00	318.50	3,526.3	534.6	-484.6	721.4	1.81	1.70	2.66	
3,712.0	16.40	320.50	3,617.0	553.4	-500.6	746.1	2.61	2.55	2.13	
3,805.0	17.10	321.30	3,706.1	574.2	-517.5	772.9	0.79	0.75	0.86	
3,899.0	17.60	320.70	3,795.8	596.0	-535.1	800.9	0.56	0.53	-0.64	
3,993.0	16.00	319.40	3,885.8	616.8	-552.6	828.0	1.75	-1.70	-1.38	
4,086.0	16.10	319.80	3,975.1	636.4	-569.2	853.7	0.16	0.11	0.43	
4,180.0	17.10	319.00	4,065.2	656.8	-586.7	880.6	1.09	1.06	-0.85	
4,274.0	17.50	318.00	4,155.0	677.7	-605.2	908.6	0.53	0.43	-1.06	
4,367.0	16.00	320.00	4,244.0	697.9	-622.8	935.4	1.73	-1.61	2.15	
4,461.0	15.20	317.40	4,334.6	716.9	-639.5	960.6	1.13	-0.85	-2.77	
4,554.0	13.00	317.30	4,424.8	733.6	-654.8	983.3	2.37	-2.37	-0.11	
4,648.0	11.50	317.30	4,516.6	748.2	-668.4	1,003.2	1.60	-1.60	0.00	
4,742.0	9.40	321.30	4,609.0	761.1	-679.5	1,020.2	2.36	-2.23	4.26	
4,837.0	8.20	322.10	4,702.9	772.5	-688.5	1,034.8	1.27	-1.26	0.84	
4,930.0	6.60	323.90	4,795.1	782.1	-695.8	1,046.7	1.74	-1.72	1.94	
5,024.0	5.10	331.40	4,888.7	790.1	-700.9	1,056.2	1.79	-1.60	7.98	
5,118.0	3.20	318.80	4,982.4	795.7	-704.7	1,062.9	2.23	-2.02	-13.40	
5,212.0	1.60	309.80	5,076.3	798.5	-707.4	1,066.8	1.74	-1.70	-9.57	
5,305.0	1.30	302.50	5,169.3	799.9	-709.3	1,069.1	0.38	-0.32	-7.85	
5,462.0	1.00	257.60	5,326.3	800.6	-712.1	1,071.5	0.59	-0.19	-28.60	
5,618.0	0.70	250.20	5,482.2	800.0	-714.4	1,072.5	0.20	-0.19	-4.74	
5,775.0	0.20	303.10	5,639.2	799.8	-715.5	1,073.1	0.38	-0.32	33.69	
5,931.0	0.10	289.70	5,795.2	800.0	-715.9	1,073.4	0.07	-0.06	-8.59	
6,088.0	0.40	231.80	5,952.2	799.7	-716.4	1,073.6	0.23	0.19	-36.88	
6,244.0	0.20	227.00	6,108.2	799.2	-717.0	1,073.6	0.13	-0.13	-3.08	
6,400.0	0.40	315.60	6,264.2	799.4	-717.6	1,074.1	0.28	0.13	56.79	
6,556.0	0.30	16.80	6,420.2	800.2	-717.9	1,074.9	0.23	-0.06	39.23	
6,712.0	0.70	14.60	6,576.2	801.5	-717.5	1,075.7	0.26	0.26	-1.41	
6,868.0	0.20	10.00	6,732.2	802.7	-717.2	1,076.4	0.32	-0.32	-2.95	
7,025.0	0.80	125.40	6,889.2	802.3	-716.3	1,075.5	0.58	0.38	73.50	
7,182.0	2.30	104.40	7,046.2	800.9	-712.4	1,071.8	1.01	0.96	-13.38	
7,339.0	3.00	101.80	7,203.0	799.3	-705.3	1,065.9	0.45	0.45	-1.66	
7,490.0	2.90	101.30	7,353.8	797.7	-697.7	1,059.8	0.07	-0.07	-0.33	
7,535.0	2.90	101.30	7,398.7	797.3	-695.4	1,058.0	0.00	0.00	0.00	

<b>Company:</b>	Synergy Resources	<b>Local Co-ordinate Reference:</b>	Well RBF 13-15D
<b>Project:</b>	SEC.15-T6N-R67W	<b>TVD Reference:</b>	WELL @ 4794.0ft (Original Well Elev)
<b>Site:</b>	RBF 24-15D Pad Sec.15-T6N-R67W	<b>MD Reference:</b>	WELL @ 4794.0ft (Original Well Elev)
<b>Well:</b>	RBF 13-15D	<b>North Reference:</b>	True
<b>Wellbore:</b>	Wellbore #1	<b>Survey Calculation Method:</b>	Minimum Curvature
<b>Design:</b>	Wellbore #1	<b>Database:</b>	Landmark

Survey									
Measured Depth (ft)	Inclination (°)	Azimuth (°)	Vertical Depth (ft)	+N/-S (ft)	+E/-W (ft)	Vertical Section (ft)	Dogleg Rate (°/100ft)	Build Rate (°/100ft)	Turn Rate (°/100ft)

Checked By: _____	Approved By: _____	Date: _____
-------------------	--------------------	-------------