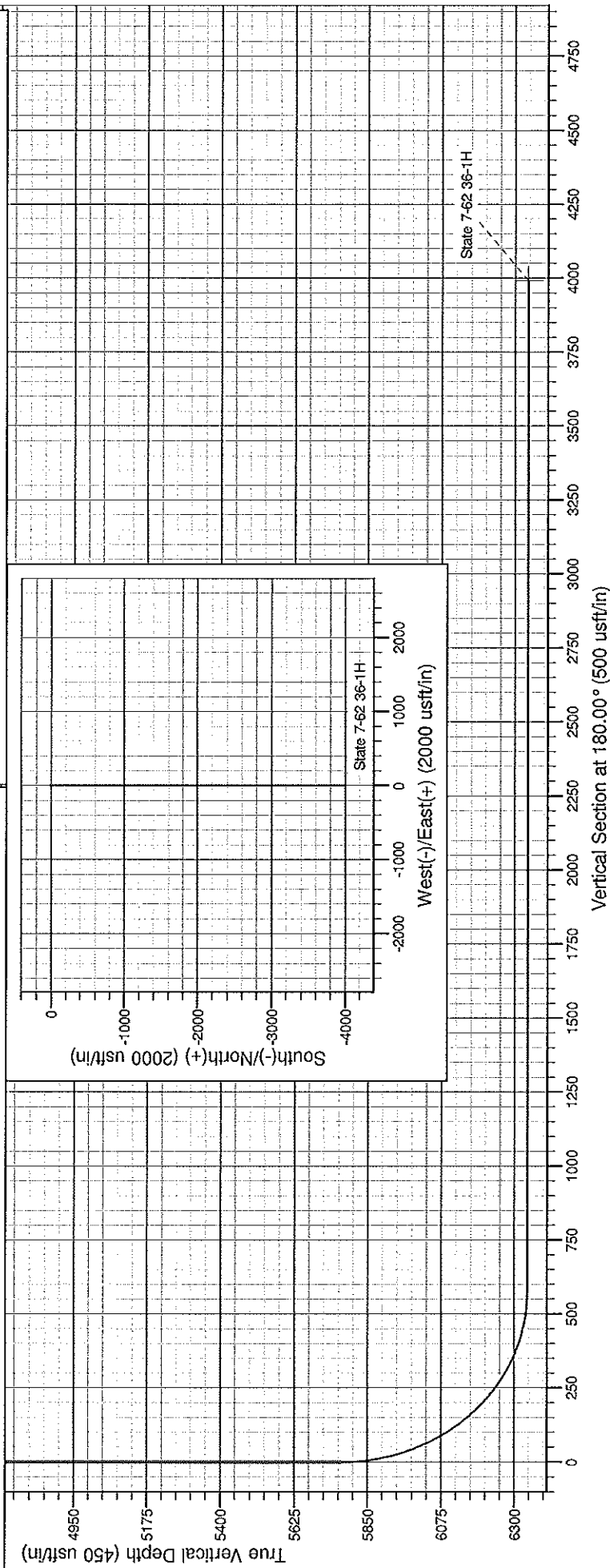


Project: Weld - DJ Basin
 Site: State 7-62 36-1H
 Well: State 7-62 36-1H
 Wellbore: State 7-62 36-1H
 Design: State 7-62 36-1H

PROJECT DETAILS: Weld - DJ Basin

Geodetic System: US State Plane 1927 (Exact solution)
 Datum: NAD 1927 (NADCON CONUS)
 Ellipsoid: Clarke 1866
 Zone: Colorado North 501

System Datum: Mean Sea Level



SECTION DETAILS

Sec	MD	Inc	Azi	TVD	+N/-S	+E/-W	Dleg	TFace	VSect	Target
1	0.0	0.00	0.00	0.0	0.0	0.0	0.00	0.00	0.0	
2	5767.0	0.00	0.00	5767.0	0.0	0.0	0.00	0.00	0.0	
3	6667.0	90.00	180.00	6340.0	-573.0	0.0	10.00	180.00	573.0	
4	10085.8	90.00	180.00	6340.0	-3991.7	0.1	0.00	0.00	3991.7	State 7-62 36-1H

Chesapeake Energy -Rockies District

Weld - DJ Basin

State 7-62 36-1H

State 7-62 36-1H

State 7-62 36-1H

Plan: State 7-62 36-1H

Standard Planning Report

19 September, 2011

Chesapeake Operating

Planning Report

Database:	Drilling Database	Local Co-ordinate Reference:	Well State 7-62 36-1H
Company:	Chesapeake Energy -Rockies District	TVD Reference:	WELL @ 0.0usft (Original Well Elev)
Project:	Weld - DJ Basin	MD Reference:	WELL @ 0.0usft (Original Well Elev)
Site:	State 7-62 36-1H	North Reference:	Grid
Well:	State 7-62 36-1H	Survey Calculation Method:	Minimum Curvature
Wellbore:	State 7-62 36-1H		
Design:	State 7-62 36-1H		

Project	Weld - DJ Basin		
Map System:	US State Plane 1927 (Exact solution)	System Datum:	Mean Sea Level
Geo Datum:	NAD 1927 (NADCON CONUS)		
Map Zone:	Colorado North 501		

Site	State 7-62 36-1H		
Site Position:		Northing:	440,568.75 ft
From:	Map	Easting:	2,339,987.94 ft
Position Uncertainty:	0.0 usft	Slot Radius:	13.200 in
		Latitude:	40° 32' 10.83747182 N
		Longitude:	104° 16' 36.52804910 W
		Grid Convergence:	0.79 °

Well	State 7-62 36-1H		
Well Position	+N/-S	0.0 usft	Northing:
	+E/-W	0.0 usft	Easting:
			Latitude:
			Longitude:
Position Uncertainty	0.0 usft	Wellhead Elevation:	Ground Level:
			0.0 usft

Wellbore	State 7-62 36-1H		
Magnetics	Model Name	Sample Date	Declination
			(°)
	IGRF200510	9/18/2011	8.53
			Dip Angle
			(°)
			67.24
			Field Strength
			(nT)
			53,288

Design	State 7-62 36-1H		
Audit Notes:			
Version:	Phase:	PROTOTYPE	Tie On Depth:
			0.0
Vertical Section:	Depth From (TVD)	+N/-S	+E/-W
	(usft)	(usft)	(usft)
	0.0	0.0	0.0
			Direction
			(°)
			180.00

Plan Sections										
Measured	Inclination	Azimuth	Vertical	+N/-S	+E/-W	Dogleg	Build	Turn	TFO	Target
Depth	(°)	(°)	Depth	(usft)	(usft)	Rate	Rate	Rate	(°)	
(usft)			(usft)			(°/100usft)	(°/100usft)	(°/100usft)		
0.0	0.00	0.00	0.0	0.0	0.0	0.00	0.00	0.00	0.00	
5,767.0	0.00	0.00	5,767.0	0.0	0.0	0.00	0.00	0.00	0.00	
6,667.0	90.00	180.00	6,340.0	-573.0	0.0	10.00	10.00	0.00	180.00	
10,085.8	90.00	180.00	6,340.0	-3,991.7	0.1	0.00	0.00	0.00	0.00	State 7-62 36-1H

Chesapeake Operating

Planning Report

Database:	Drilling Database	Local Co-ordinate Reference:	Well State 7-62 36-1H
Company:	Chesapeake Energy -Rockies District	TVD Reference:	WELL @ 0.0usft (Original Well Elev)
Project:	Weld - DJ Basin	MD Reference:	WELL @ 0.0usft (Original Well Elev)
Site:	State 7-62 36-1H	North Reference:	Grid
Well:	State 7-62 36-1H	Survey Calculation Method:	Minimum Curvature
Wellbore:	State 7-62 36-1H		
Design:	State 7-62 36-1H		

Planned Survey

Measured Depth (usft)	Inclination (°)	Azimuth (°)	Vertical Depth (usft)	+N/-S (usft)	+E/-W (usft)	Vertical Section (usft)	Dogleg Rate (°/100usft)	Build Rate (°/100usft)	Turn Rate (°/100usft)
0.0	0.00	0.00	0.0	0.0	0.0	0.0	0.00	0.00	0.00
100.0	0.00	0.00	100.0	0.0	0.0	0.0	0.00	0.00	0.00
200.0	0.00	0.00	200.0	0.0	0.0	0.0	0.00	0.00	0.00
300.0	0.00	0.00	300.0	0.0	0.0	0.0	0.00	0.00	0.00
400.0	0.00	0.00	400.0	0.0	0.0	0.0	0.00	0.00	0.00
500.0	0.00	0.00	500.0	0.0	0.0	0.0	0.00	0.00	0.00
600.0	0.00	0.00	600.0	0.0	0.0	0.0	0.00	0.00	0.00
700.0	0.00	0.00	700.0	0.0	0.0	0.0	0.00	0.00	0.00
800.0	0.00	0.00	800.0	0.0	0.0	0.0	0.00	0.00	0.00
900.0	0.00	0.00	900.0	0.0	0.0	0.0	0.00	0.00	0.00
1,000.0	0.00	0.00	1,000.0	0.0	0.0	0.0	0.00	0.00	0.00
1,100.0	0.00	0.00	1,100.0	0.0	0.0	0.0	0.00	0.00	0.00
1,200.0	0.00	0.00	1,200.0	0.0	0.0	0.0	0.00	0.00	0.00
1,300.0	0.00	0.00	1,300.0	0.0	0.0	0.0	0.00	0.00	0.00
1,400.0	0.00	0.00	1,400.0	0.0	0.0	0.0	0.00	0.00	0.00
1,500.0	0.00	0.00	1,500.0	0.0	0.0	0.0	0.00	0.00	0.00
1,600.0	0.00	0.00	1,600.0	0.0	0.0	0.0	0.00	0.00	0.00
1,700.0	0.00	0.00	1,700.0	0.0	0.0	0.0	0.00	0.00	0.00
1,800.0	0.00	0.00	1,800.0	0.0	0.0	0.0	0.00	0.00	0.00
1,900.0	0.00	0.00	1,900.0	0.0	0.0	0.0	0.00	0.00	0.00
2,000.0	0.00	0.00	2,000.0	0.0	0.0	0.0	0.00	0.00	0.00
2,100.0	0.00	0.00	2,100.0	0.0	0.0	0.0	0.00	0.00	0.00
2,200.0	0.00	0.00	2,200.0	0.0	0.0	0.0	0.00	0.00	0.00
2,300.0	0.00	0.00	2,300.0	0.0	0.0	0.0	0.00	0.00	0.00
2,400.0	0.00	0.00	2,400.0	0.0	0.0	0.0	0.00	0.00	0.00
2,500.0	0.00	0.00	2,500.0	0.0	0.0	0.0	0.00	0.00	0.00
2,600.0	0.00	0.00	2,600.0	0.0	0.0	0.0	0.00	0.00	0.00
2,700.0	0.00	0.00	2,700.0	0.0	0.0	0.0	0.00	0.00	0.00
2,800.0	0.00	0.00	2,800.0	0.0	0.0	0.0	0.00	0.00	0.00
2,900.0	0.00	0.00	2,900.0	0.0	0.0	0.0	0.00	0.00	0.00
3,000.0	0.00	0.00	3,000.0	0.0	0.0	0.0	0.00	0.00	0.00
3,100.0	0.00	0.00	3,100.0	0.0	0.0	0.0	0.00	0.00	0.00
3,200.0	0.00	0.00	3,200.0	0.0	0.0	0.0	0.00	0.00	0.00
3,300.0	0.00	0.00	3,300.0	0.0	0.0	0.0	0.00	0.00	0.00
3,400.0	0.00	0.00	3,400.0	0.0	0.0	0.0	0.00	0.00	0.00
3,500.0	0.00	0.00	3,500.0	0.0	0.0	0.0	0.00	0.00	0.00
3,600.0	0.00	0.00	3,600.0	0.0	0.0	0.0	0.00	0.00	0.00
3,700.0	0.00	0.00	3,700.0	0.0	0.0	0.0	0.00	0.00	0.00
3,800.0	0.00	0.00	3,800.0	0.0	0.0	0.0	0.00	0.00	0.00
3,900.0	0.00	0.00	3,900.0	0.0	0.0	0.0	0.00	0.00	0.00
4,000.0	0.00	0.00	4,000.0	0.0	0.0	0.0	0.00	0.00	0.00
4,100.0	0.00	0.00	4,100.0	0.0	0.0	0.0	0.00	0.00	0.00
4,200.0	0.00	0.00	4,200.0	0.0	0.0	0.0	0.00	0.00	0.00
4,300.0	0.00	0.00	4,300.0	0.0	0.0	0.0	0.00	0.00	0.00
4,400.0	0.00	0.00	4,400.0	0.0	0.0	0.0	0.00	0.00	0.00
4,500.0	0.00	0.00	4,500.0	0.0	0.0	0.0	0.00	0.00	0.00
4,600.0	0.00	0.00	4,600.0	0.0	0.0	0.0	0.00	0.00	0.00
4,700.0	0.00	0.00	4,700.0	0.0	0.0	0.0	0.00	0.00	0.00
4,800.0	0.00	0.00	4,800.0	0.0	0.0	0.0	0.00	0.00	0.00
4,900.0	0.00	0.00	4,900.0	0.0	0.0	0.0	0.00	0.00	0.00
5,000.0	0.00	0.00	5,000.0	0.0	0.0	0.0	0.00	0.00	0.00
5,100.0	0.00	0.00	5,100.0	0.0	0.0	0.0	0.00	0.00	0.00
5,200.0	0.00	0.00	5,200.0	0.0	0.0	0.0	0.00	0.00	0.00
5,300.0	0.00	0.00	5,300.0	0.0	0.0	0.0	0.00	0.00	0.00

Chesapeake Operating

Planning Report

Database:	Drilling Database	Local Co-ordinate Reference:	Well State 7-62 36-1H
Company:	Chesapeake Energy -Rockies District	TVD Reference:	WELL @ 0.0usft (Original Well Elev)
Project:	Weld - DJ Basin	MD Reference:	WELL @ 0.0usft (Original Well Elev)
Site:	State 7-62 36-1H	North Reference:	Grid
Well:	State 7-62 36-1H	Survey Calculation Method:	Minimum Curvature
Wellbore:	State 7-62 36-1H		
Design:	State 7-62 36-1H		

Planned Survey

Measured Depth (usft)	Inclination (°)	Azimuth (°)	Vertical Depth (usft)	+N-S (usft)	+E-W (usft)	Vertical Section (usft)	Dogleg Rate (°/100usft)	Build Rate (°/100usft)	Turn Rate (°/100usft)
5,400.0	0.00	0.00	5,400.0	0.0	0.0	0.0	0.00	0.00	0.00
5,500.0	0.00	0.00	5,500.0	0.0	0.0	0.0	0.00	0.00	0.00
5,600.0	0.00	0.00	5,600.0	0.0	0.0	0.0	0.00	0.00	0.00
5,700.0	0.00	0.00	5,700.0	0.0	0.0	0.0	0.00	0.00	0.00
5,767.0	0.00	0.00	5,767.0	0.0	0.0	0.0	0.00	0.00	0.00
5,800.0	3.30	180.00	5,800.0	-0.9	0.0	0.9	10.00	10.00	0.00
5,850.0	8.30	180.00	5,849.7	-6.0	0.0	6.0	10.00	10.00	0.00
5,900.0	13.30	180.00	5,898.8	-15.4	0.0	15.4	10.00	10.00	0.00
5,950.0	18.30	180.00	5,946.9	-29.0	0.0	29.0	10.00	10.00	0.00
6,000.0	23.30	180.00	5,993.6	-46.7	0.0	46.7	10.00	10.00	0.00
6,050.0	28.30	180.00	6,038.6	-68.5	0.0	68.5	10.00	10.00	0.00
6,100.0	33.30	180.00	6,081.6	-94.1	0.0	94.1	10.00	10.00	0.00
6,150.0	38.30	180.00	6,122.1	-123.3	0.0	123.3	10.00	10.00	0.00
6,200.0	43.30	180.00	6,160.0	-155.9	0.0	155.9	10.00	10.00	0.00
6,250.0	48.30	180.00	6,194.8	-191.8	0.0	191.8	10.00	10.00	0.00
6,300.0	53.30	180.00	6,226.4	-230.5	0.0	230.5	10.00	10.00	0.00
6,350.0	58.30	180.00	6,254.5	-271.8	0.0	271.8	10.00	10.00	0.00
6,400.0	63.30	180.00	6,278.9	-315.5	0.0	315.5	10.00	10.00	0.00
6,450.0	68.30	180.00	6,299.4	-361.1	0.0	361.1	10.00	10.00	0.00
6,500.0	73.30	180.00	6,315.8	-408.3	0.0	408.3	10.00	10.00	0.00
6,550.0	78.30	180.00	6,328.1	-456.7	0.0	456.7	10.00	10.00	0.00
6,600.0	83.30	180.00	6,336.1	-506.1	0.0	506.1	10.00	10.00	0.00
6,650.0	88.30	180.00	6,339.7	-555.9	0.0	555.9	10.00	10.00	0.00
6,667.0	90.00	180.00	6,340.0	-573.0	0.0	573.0	10.00	10.00	0.00
6,700.0	90.00	180.00	6,340.0	-605.9	0.0	605.9	0.00	0.00	0.00
6,800.0	90.00	180.00	6,340.0	-705.9	0.0	705.9	0.00	0.00	0.00
6,900.0	90.00	180.00	6,340.0	-805.9	0.0	805.9	0.00	0.00	0.00
7,000.0	90.00	180.00	6,340.0	-905.9	0.0	905.9	0.00	0.00	0.00
7,100.0	90.00	180.00	6,340.0	-1,005.9	0.0	1,005.9	0.00	0.00	0.00
7,200.0	90.00	180.00	6,340.0	-1,105.9	0.0	1,105.9	0.00	0.00	0.00
7,300.0	90.00	180.00	6,340.0	-1,205.9	0.0	1,205.9	0.00	0.00	0.00
7,400.0	90.00	180.00	6,340.0	-1,305.9	0.0	1,305.9	0.00	0.00	0.00
7,500.0	90.00	180.00	6,340.0	-1,405.9	0.0	1,405.9	0.00	0.00	0.00
7,600.0	90.00	180.00	6,340.0	-1,505.9	0.0	1,505.9	0.00	0.00	0.00
7,700.0	90.00	180.00	6,340.0	-1,605.9	0.0	1,605.9	0.00	0.00	0.00
7,800.0	90.00	180.00	6,340.0	-1,705.9	0.0	1,705.9	0.00	0.00	0.00
7,900.0	90.00	180.00	6,340.0	-1,805.9	0.0	1,805.9	0.00	0.00	0.00
8,000.0	90.00	180.00	6,340.0	-1,905.9	0.0	1,905.9	0.00	0.00	0.00
8,100.0	90.00	180.00	6,340.0	-2,005.9	0.0	2,005.9	0.00	0.00	0.00
8,200.0	90.00	180.00	6,340.0	-2,105.9	0.0	2,105.9	0.00	0.00	0.00
8,300.0	90.00	180.00	6,340.0	-2,205.9	0.0	2,205.9	0.00	0.00	0.00
8,400.0	90.00	180.00	6,340.0	-2,305.9	0.0	2,305.9	0.00	0.00	0.00
8,500.0	90.00	180.00	6,340.0	-2,405.9	0.0	2,405.9	0.00	0.00	0.00
8,600.0	90.00	180.00	6,340.0	-2,505.9	0.0	2,505.9	0.00	0.00	0.00
8,700.0	90.00	180.00	6,340.0	-2,605.9	0.0	2,605.9	0.00	0.00	0.00
8,800.0	90.00	180.00	6,340.0	-2,705.9	0.0	2,705.9	0.00	0.00	0.00
8,900.0	90.00	180.00	6,340.0	-2,805.9	0.0	2,805.9	0.00	0.00	0.00
9,000.0	90.00	180.00	6,340.0	-2,905.9	0.0	2,905.9	0.00	0.00	0.00
9,100.0	90.00	180.00	6,340.0	-3,005.9	0.0	3,005.9	0.00	0.00	0.00
9,200.0	90.00	180.00	6,340.0	-3,105.9	0.0	3,105.9	0.00	0.00	0.00
9,300.0	90.00	180.00	6,340.0	-3,205.9	0.0	3,205.9	0.00	0.00	0.00
9,400.0	90.00	180.00	6,340.0	-3,305.9	0.0	3,305.9	0.00	0.00	0.00
9,500.0	90.00	180.00	6,340.0	-3,405.9	0.1	3,405.9	0.00	0.00	0.00
9,600.0	90.00	180.00	6,340.0	-3,505.9	0.1	3,505.9	0.00	0.00	0.00

Chesapeake Operating

Planning Report

Database:	Drilling Database	Local Co-ordinate Reference:	Well State 7-62 36-1H
Company:	Chesapeake Energy -Rockies District	TVD Reference:	WELL @ 0.0usft (Original Well Elev)
Project:	Weld - DJ Basin	MD Reference:	WELL @ 0.0usft (Original Well Elev)
Site:	State 7-62 36-1H	North Reference:	Grid
Well:	State 7-62 36-1H	Survey Calculation Method:	Minimum Curvature
Wellbore:	State 7-62 36-1H		
Design:	State 7-62 36-1H		

Planned Survey

Measured Depth (usft)	Inclination (°)	Azimuth (°)	Vertical Depth (usft)	+N-S (usft)	+E-W (usft)	Vertical Section (usft)	Dogleg Rate (°/100usft)	Build Rate (°/100usft)	Turn Rate (°/100usft)
9,700.0	90.00	180.00	6,340.0	-3,605.9	0.1	3,605.9	0.00	0.00	0.00
9,800.0	90.00	180.00	6,340.0	-3,705.9	0.1	3,705.9	0.00	0.00	0.00
9,900.0	90.00	180.00	6,340.0	-3,805.9	0.1	3,805.9	0.00	0.00	0.00
10,000.0	90.00	180.00	6,340.0	-3,905.9	0.1	3,905.9	0.00	0.00	0.00
10,085.8	90.00	180.00	6,340.0	-3,991.7	0.1	3,991.7	0.00	0.00	0.00

Design Targets

Target Name	Dip Angle (°)	Dip Dir. (°)	TVD (usft)	+N-S (usft)	+E-W (usft)	NorthIng (ft)	Easting (ft)	Latitude	Longitude
State 7-62 36-1H	0.00	0.00	6,340.0	-3,991.7	0.1	436,577.00	2,339,988.00	0° 31' 31.39519570 N	4° 16' 37.24028057 W
- hit/miss target									
- Shape									
- plan hits target center									
- Point									