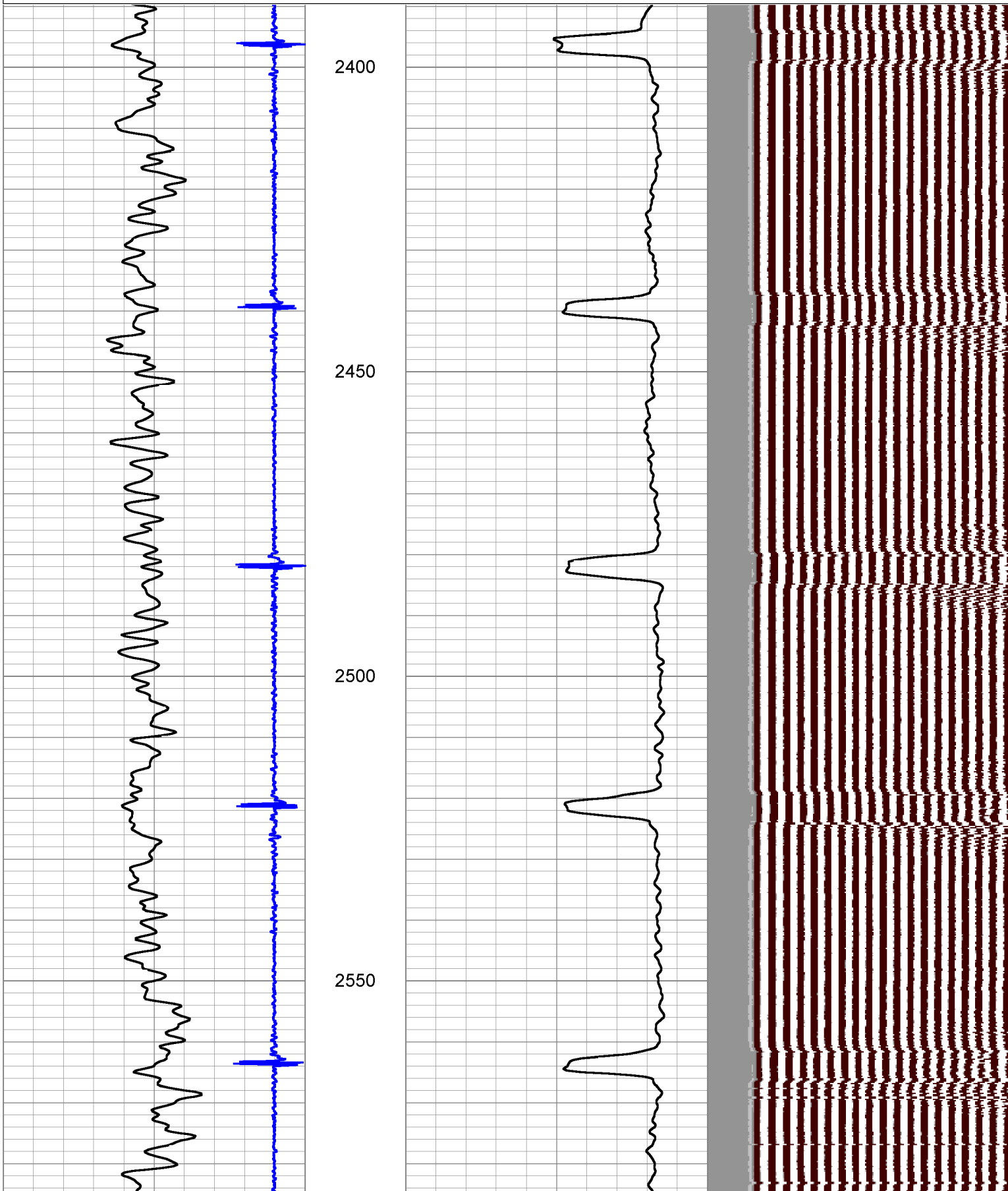


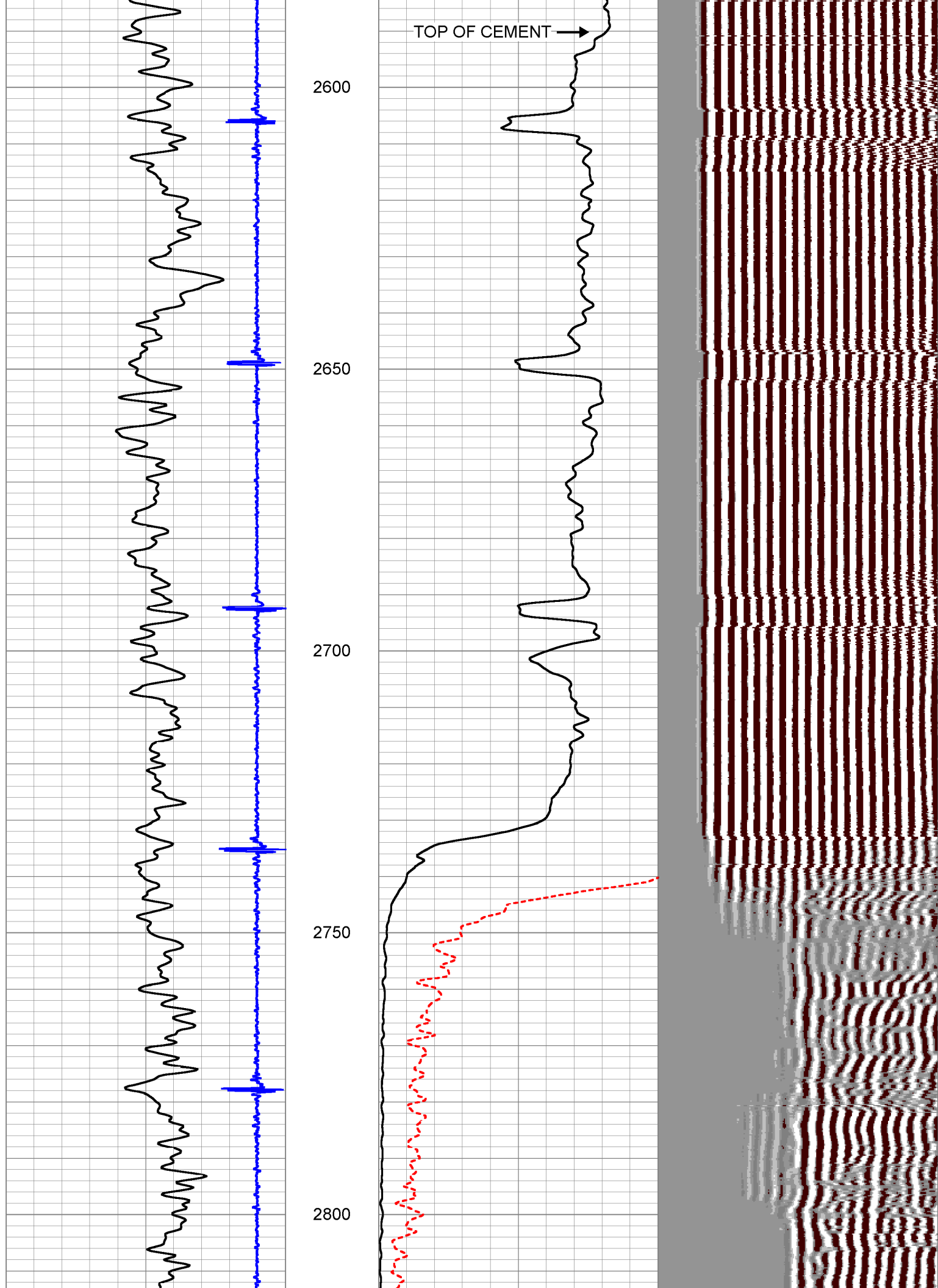
| |
|---|
| <<< Fold Here >>> |
| HALLIBURTON DOES NOT GUARANTEE THE ACCURACY OF ANY INTERPRETATION OF THE LOG DATA, CONVERSION OF LOG DATA TO PHYSICAL ROCK PARAMETERS OR RECOMMENDATIONS WHICH MAY BE GIVEN BY HALLIBURTON PERSONNEL OR WHICH APPEAR ON THE LOG OR IN ANY OTHER FORM. ANY USER OF SUCH DATA, INTERPRETATIONS, CONVERSIONS, OR RECOMMENDATIONS AGREES THAT HALLIBURTON IS NOT RESPONSIBLE EXCEPT WHERE DUE TO GROSS NEGLIGENCE OR WILLFUL MISCONDUCT, FOR ANY LOSS, DAMAGES, OR EXPENSES RESULTING FROM THE USE THEREOF. |
| Comments |
| Log correlated to PSI Compensated Neutron Microlog Dated 4 March 2008 |
| Short Joints: 7005+ to 7026+ & 6736 to 6750 |
| Thank you for Choosing Halliburton Energy Services |
| Your crew today was: J. Folkers, K. Townsend, C. Johnson |

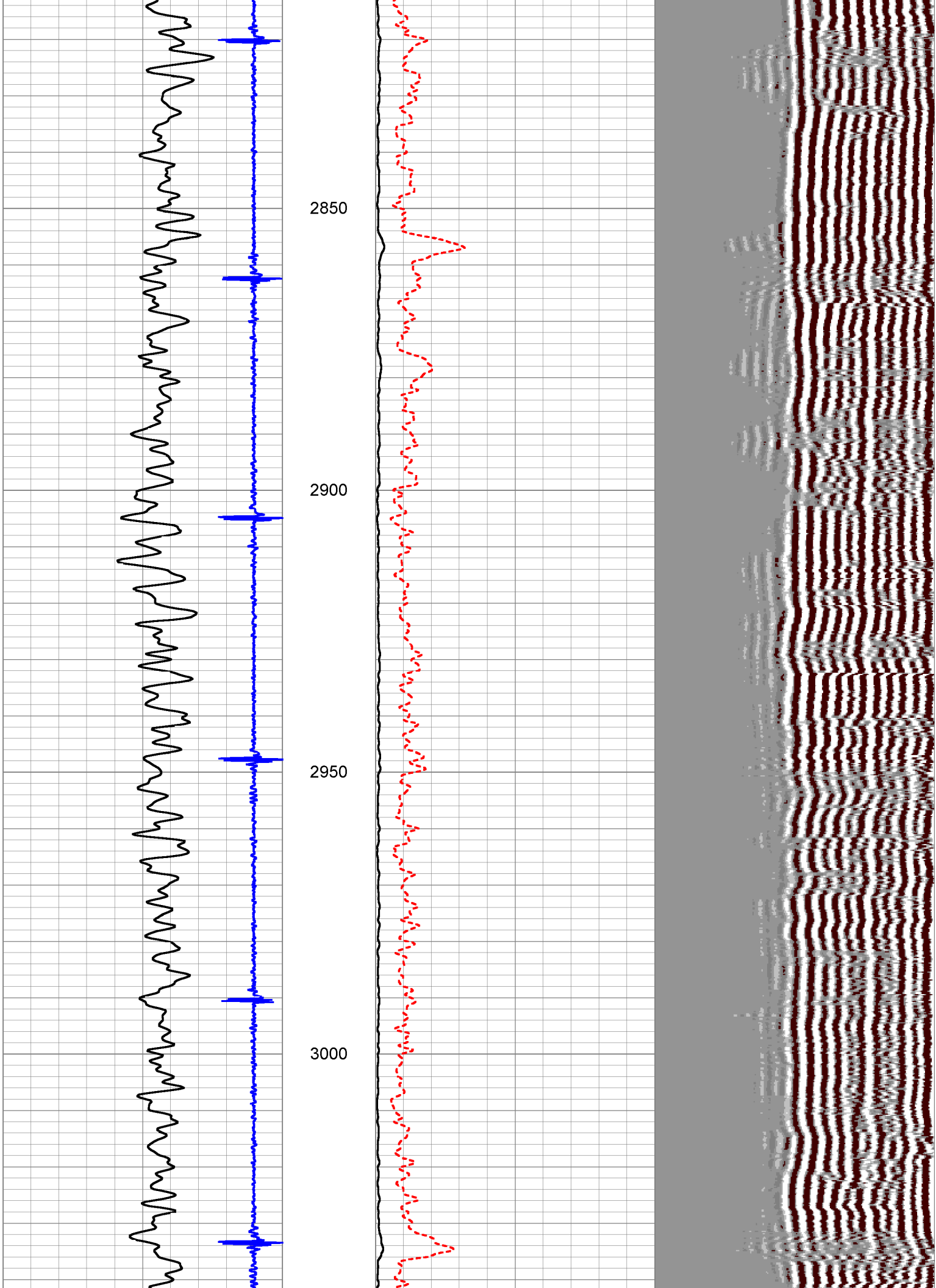
Database File: dillard_wax_ab.0.16.db

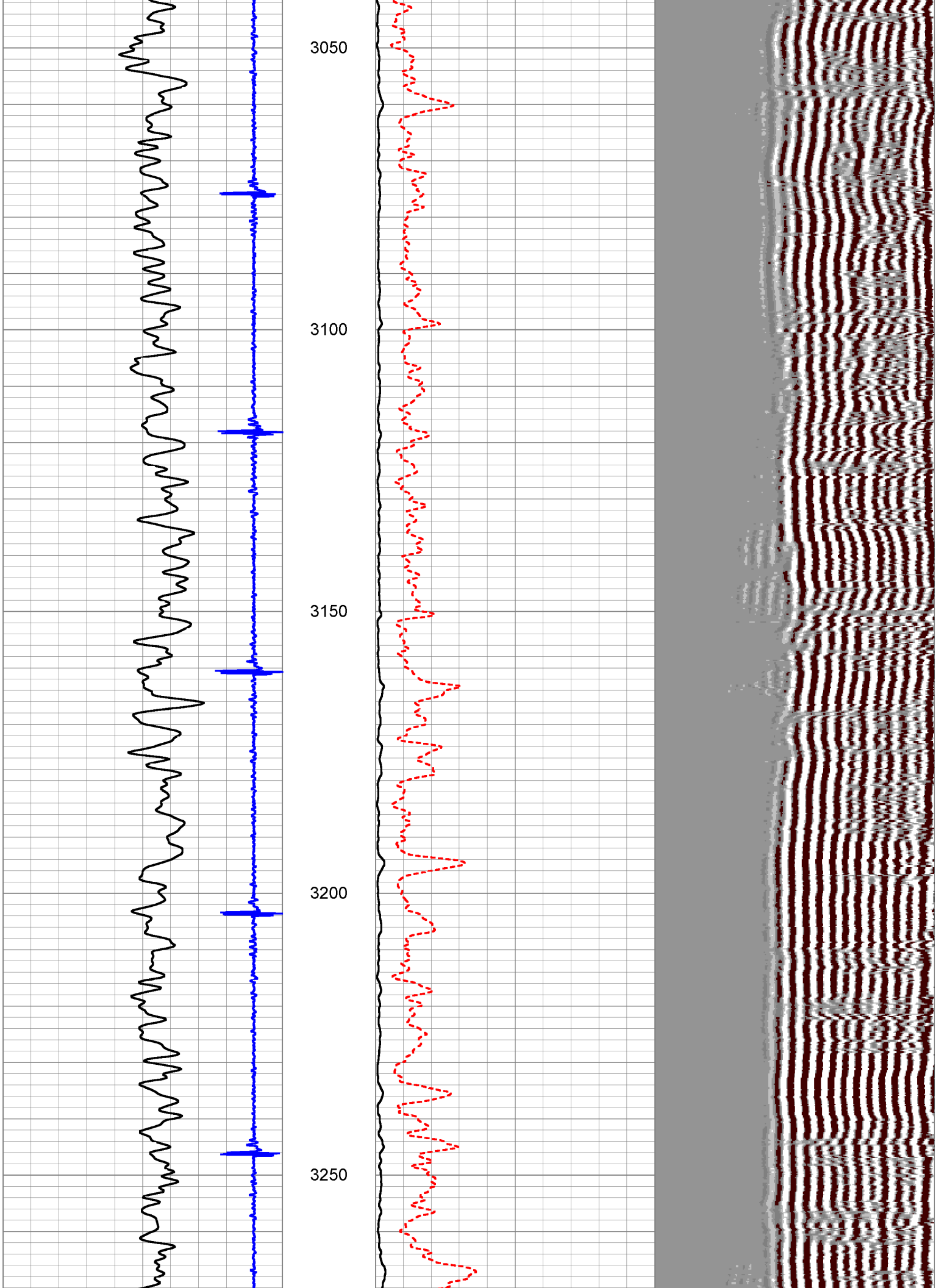
Database File: collar usx ab 9-16.db
Dataset Pathname: pass9
Presentation Format: cbldig
Dataset Creation: Wed Mar 12 13:39:46 2008 by Log Halliburton Casedho
Charted by: Depth in Feet scaled 1:240

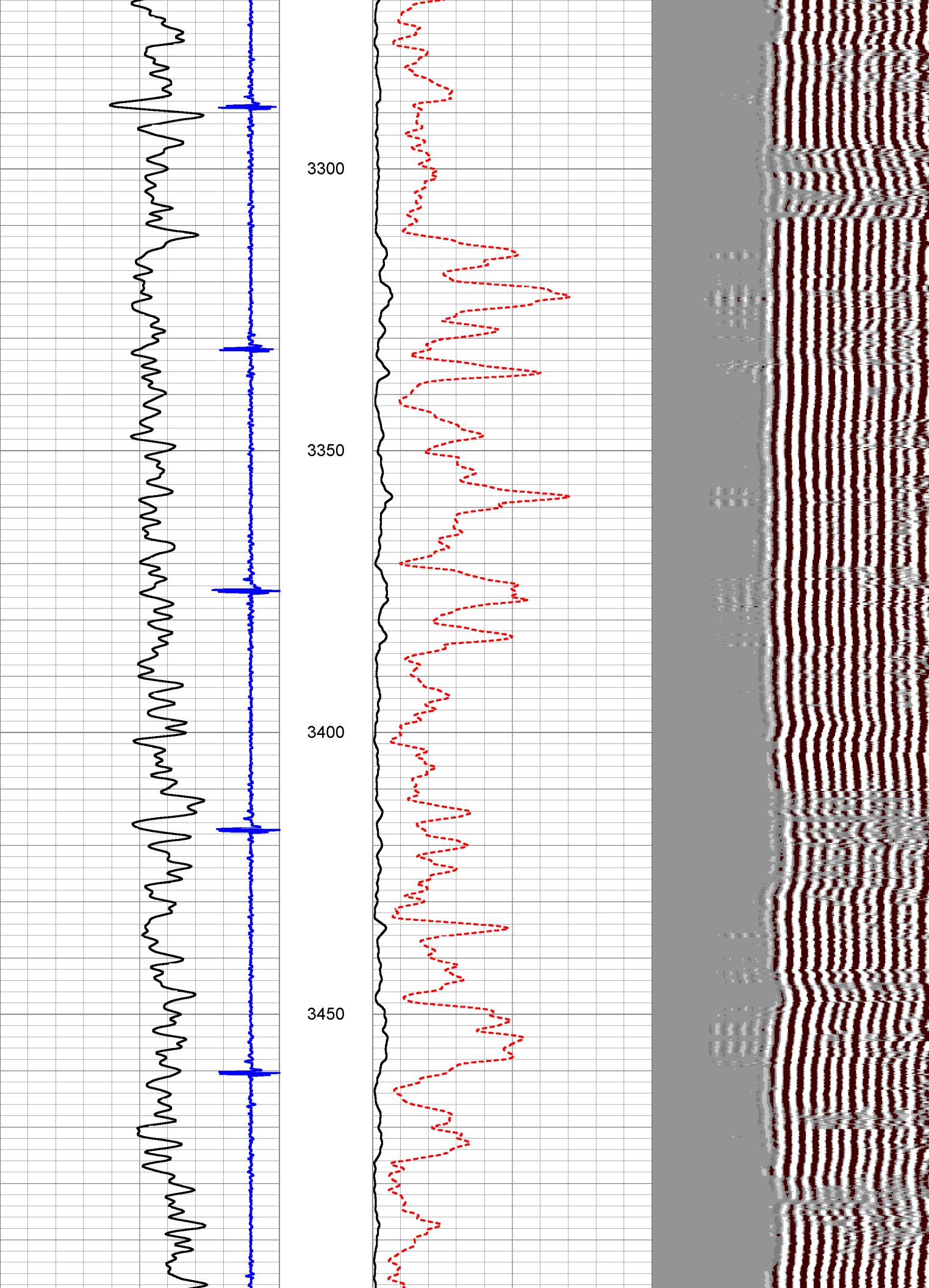
| | | | | | | | | |
|---|----------------|-----|---|--------------------------|-----|-----|------------------|------|
| 9 | Collar Locator | -1 | 0 | Amplitude (mV) | 100 | 200 | Variable Density | 1200 |
| 0 | GR CBL (GAPI) | 150 | 0 | Amplified Amplitude (mV) | 10 | | | |

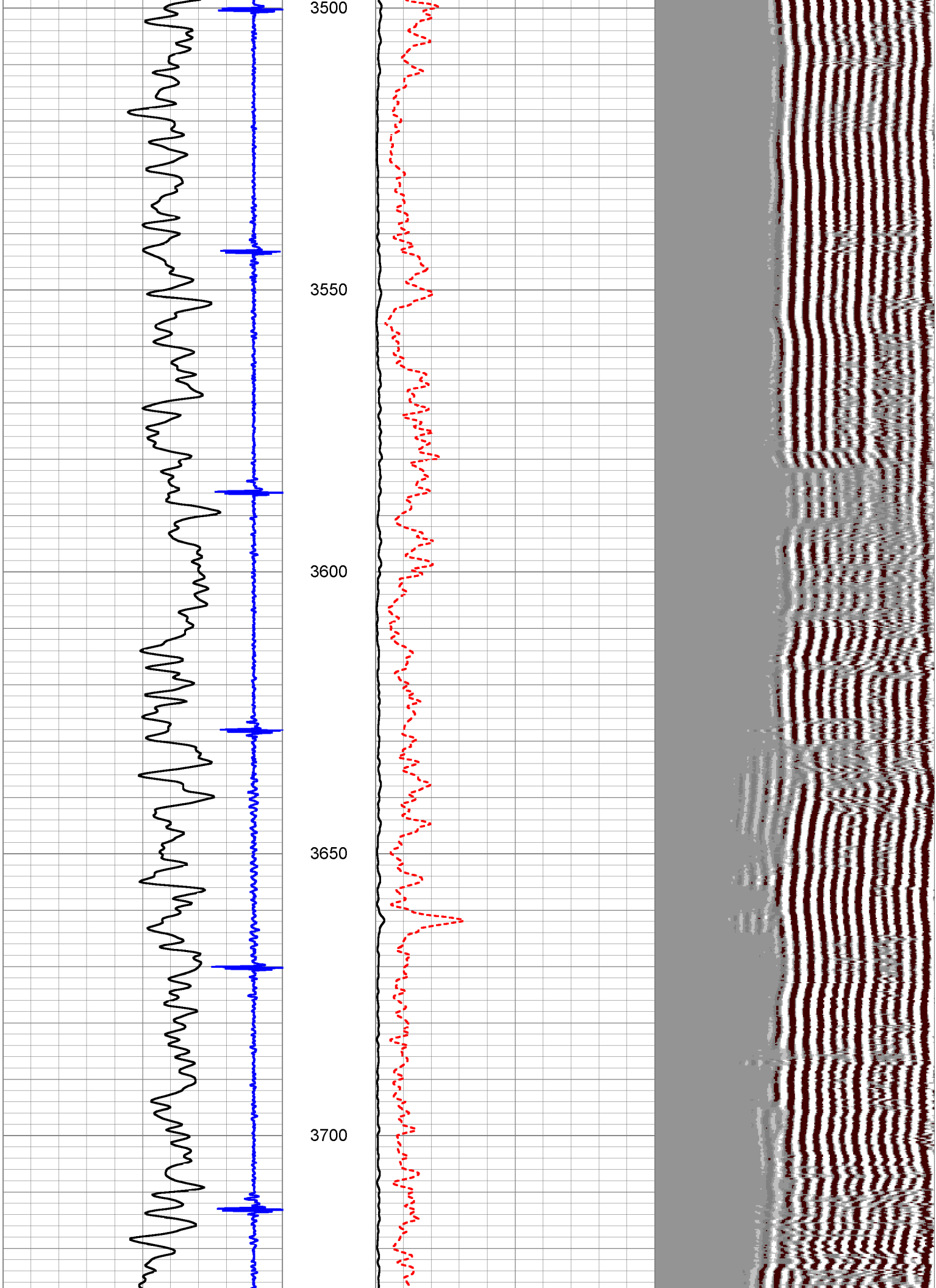


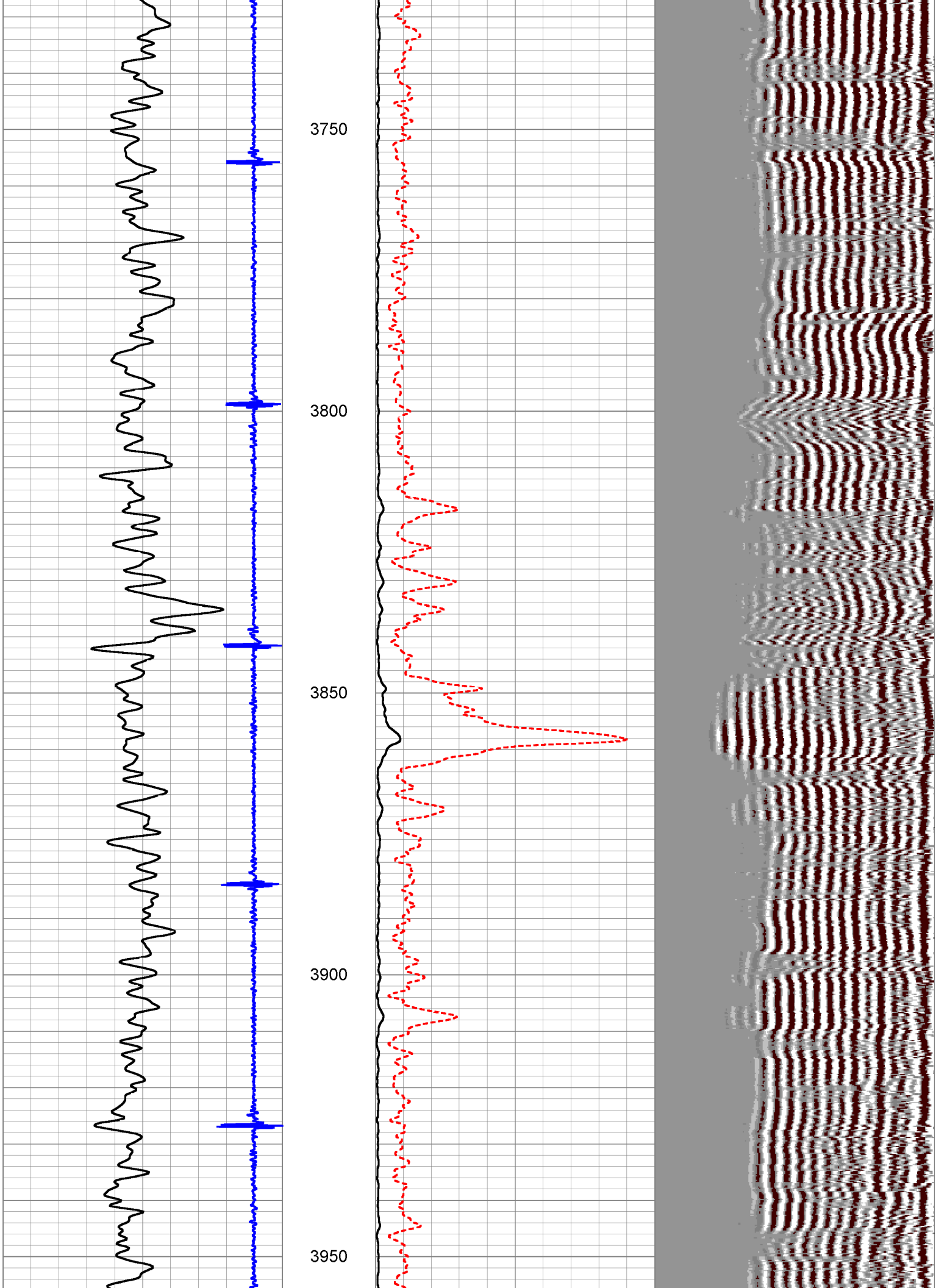


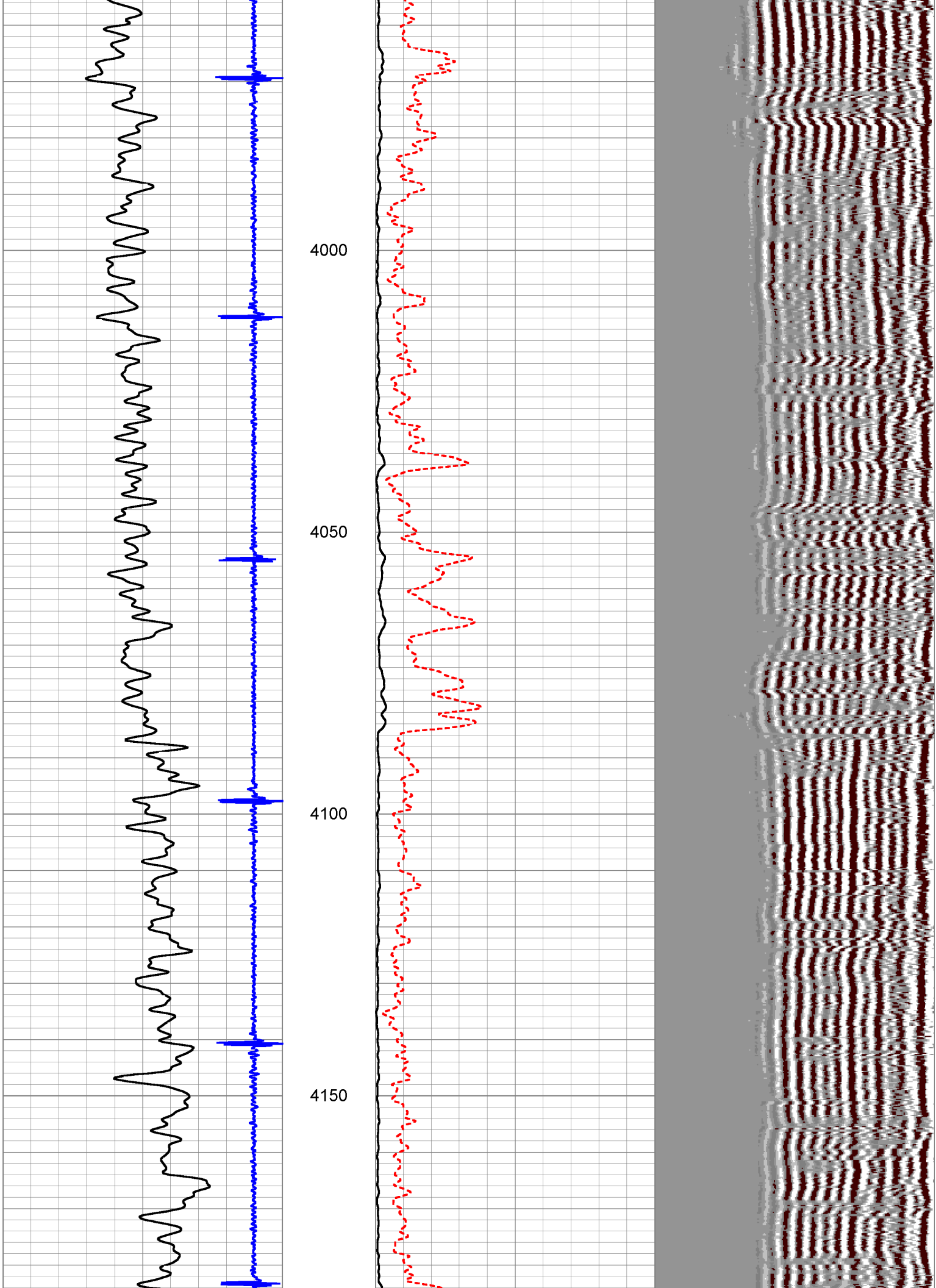


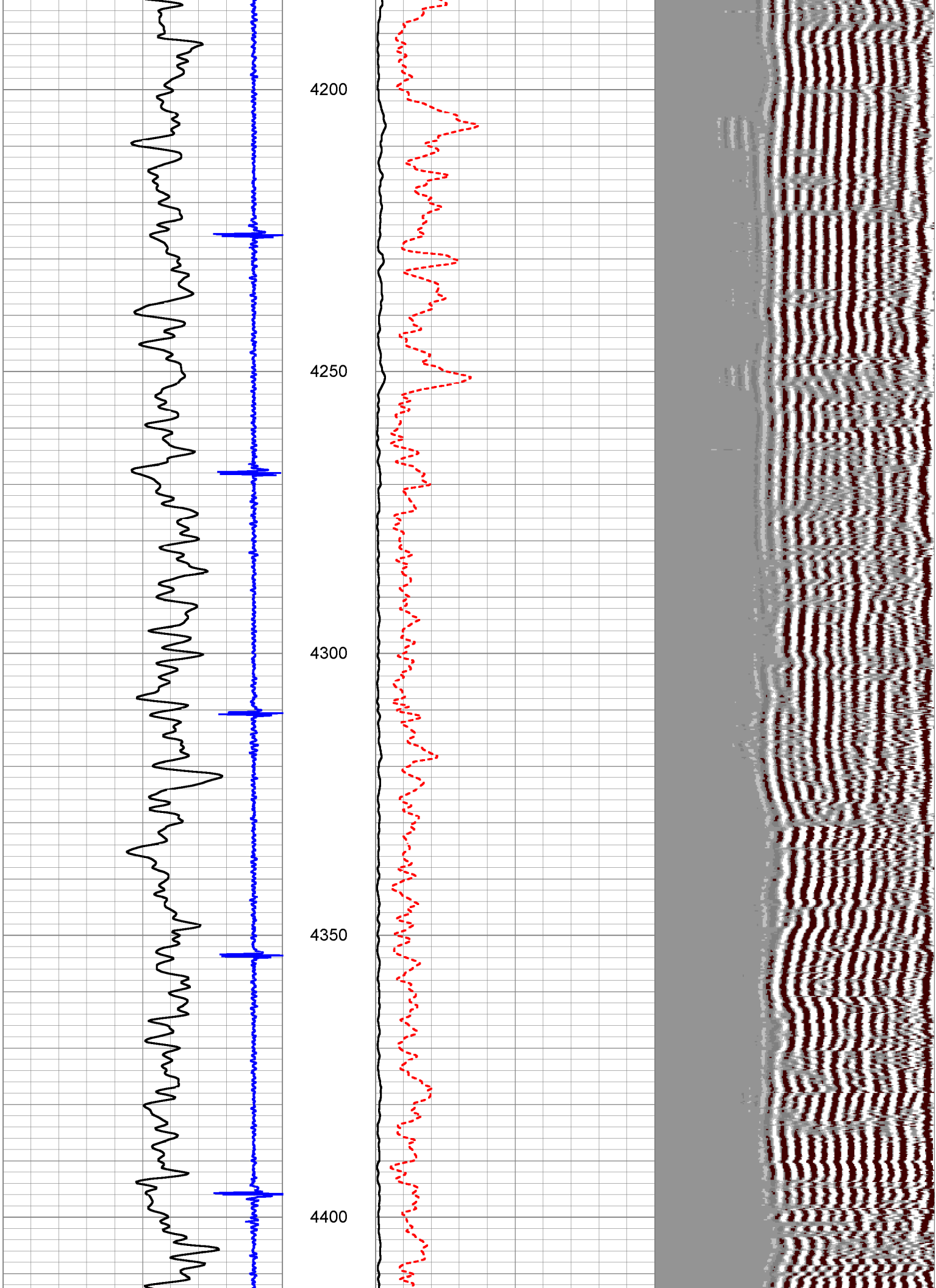


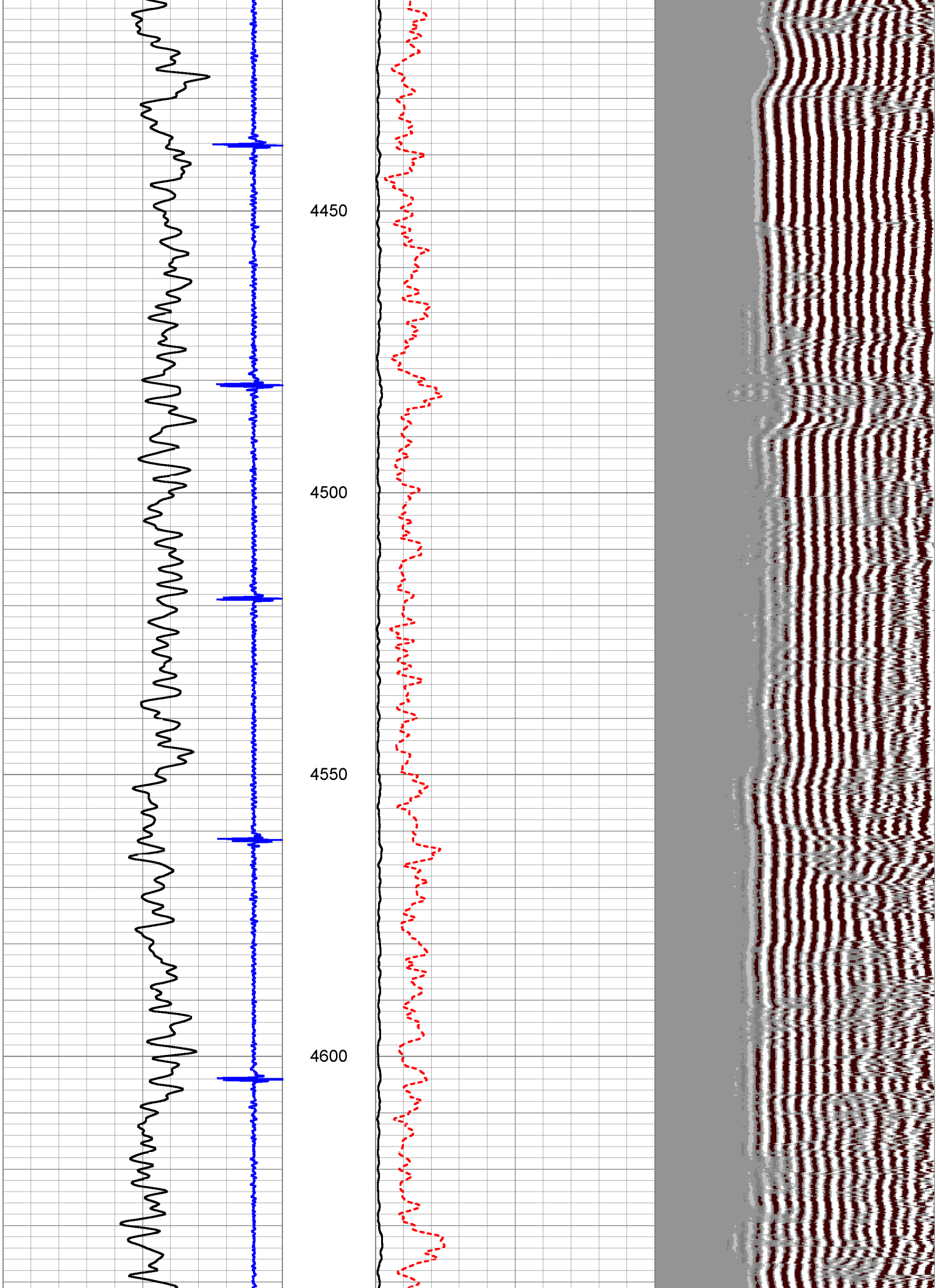


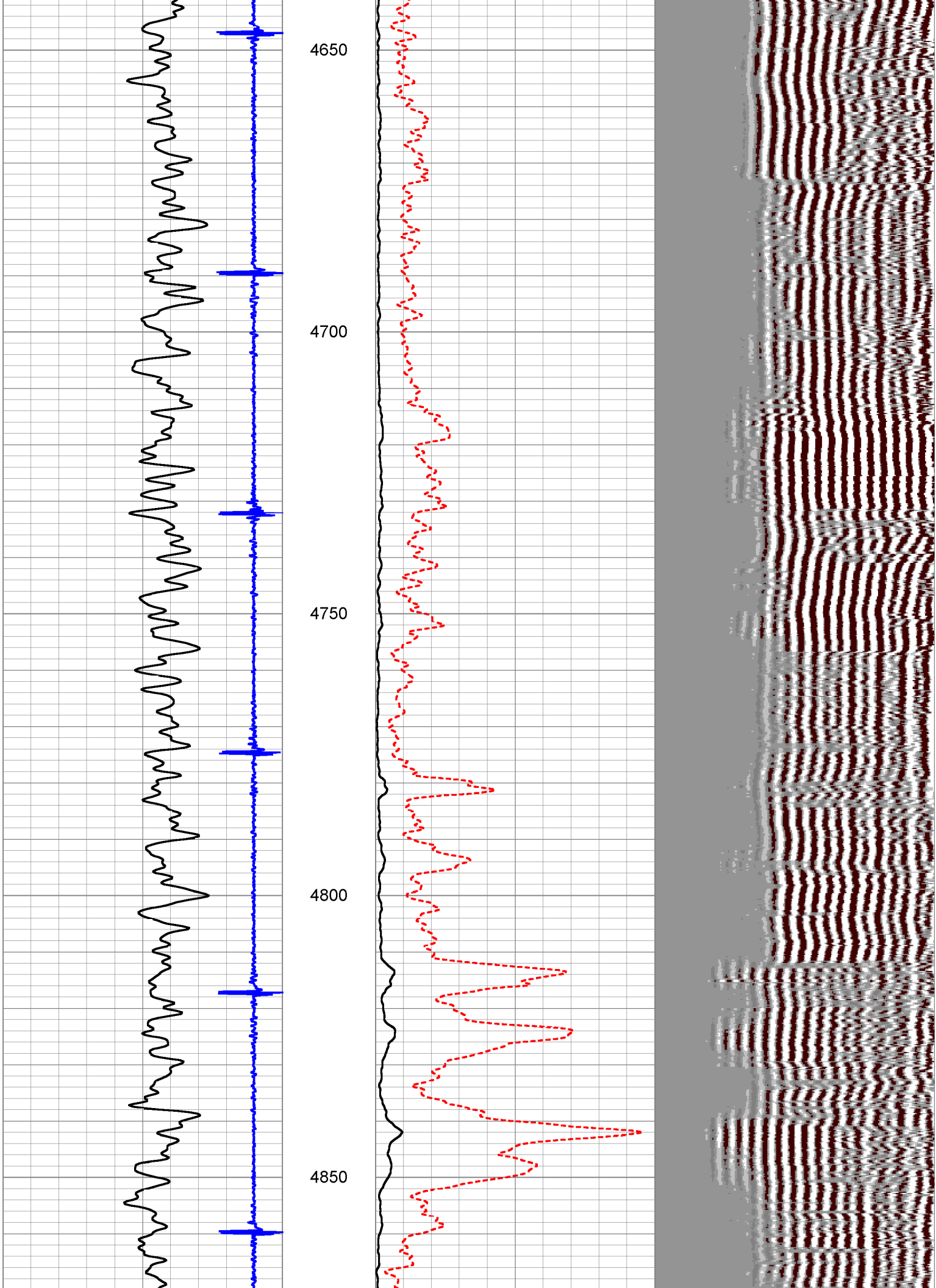


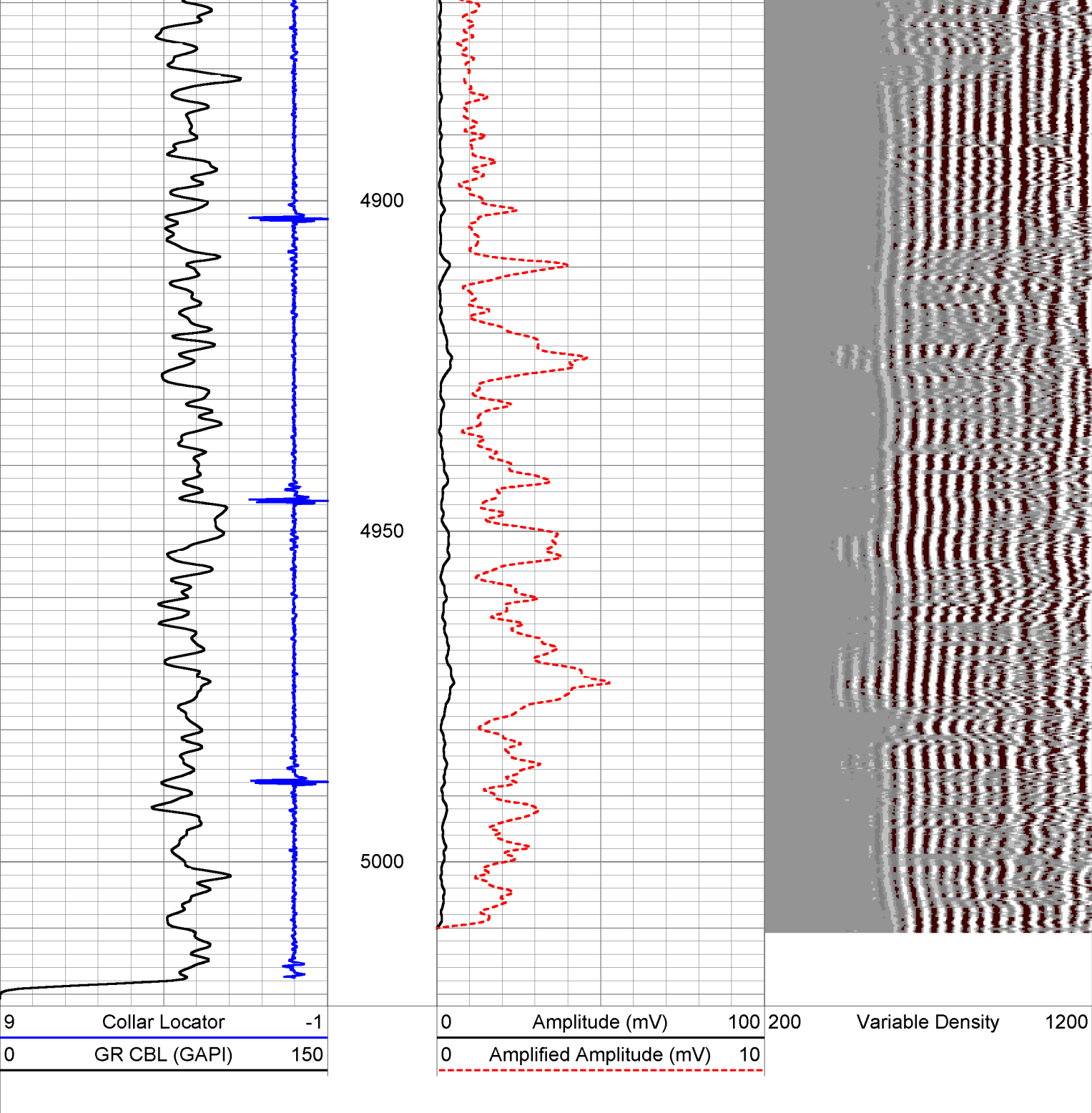












HALLIBURTON

Main Pass

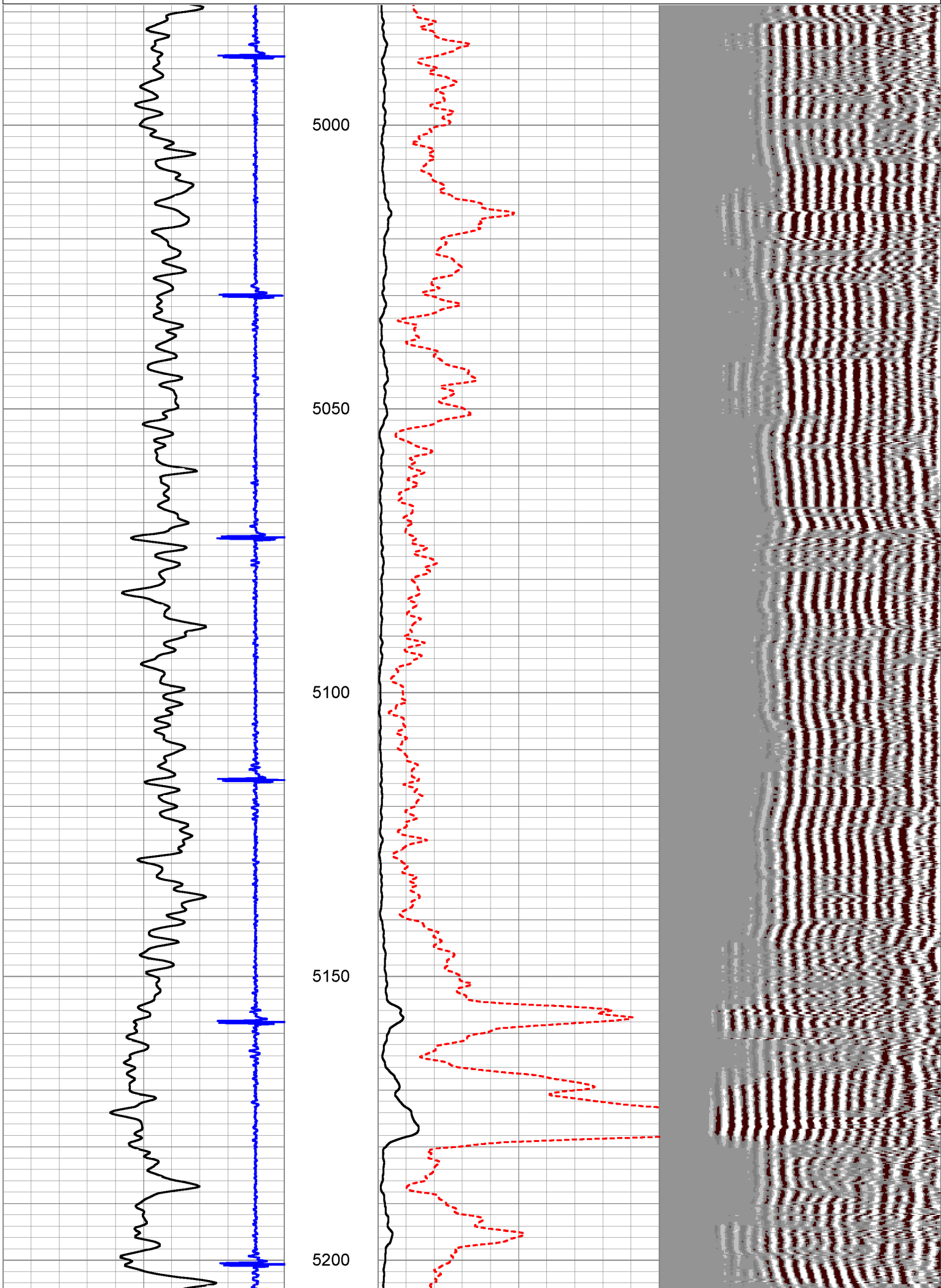
5" = 100'

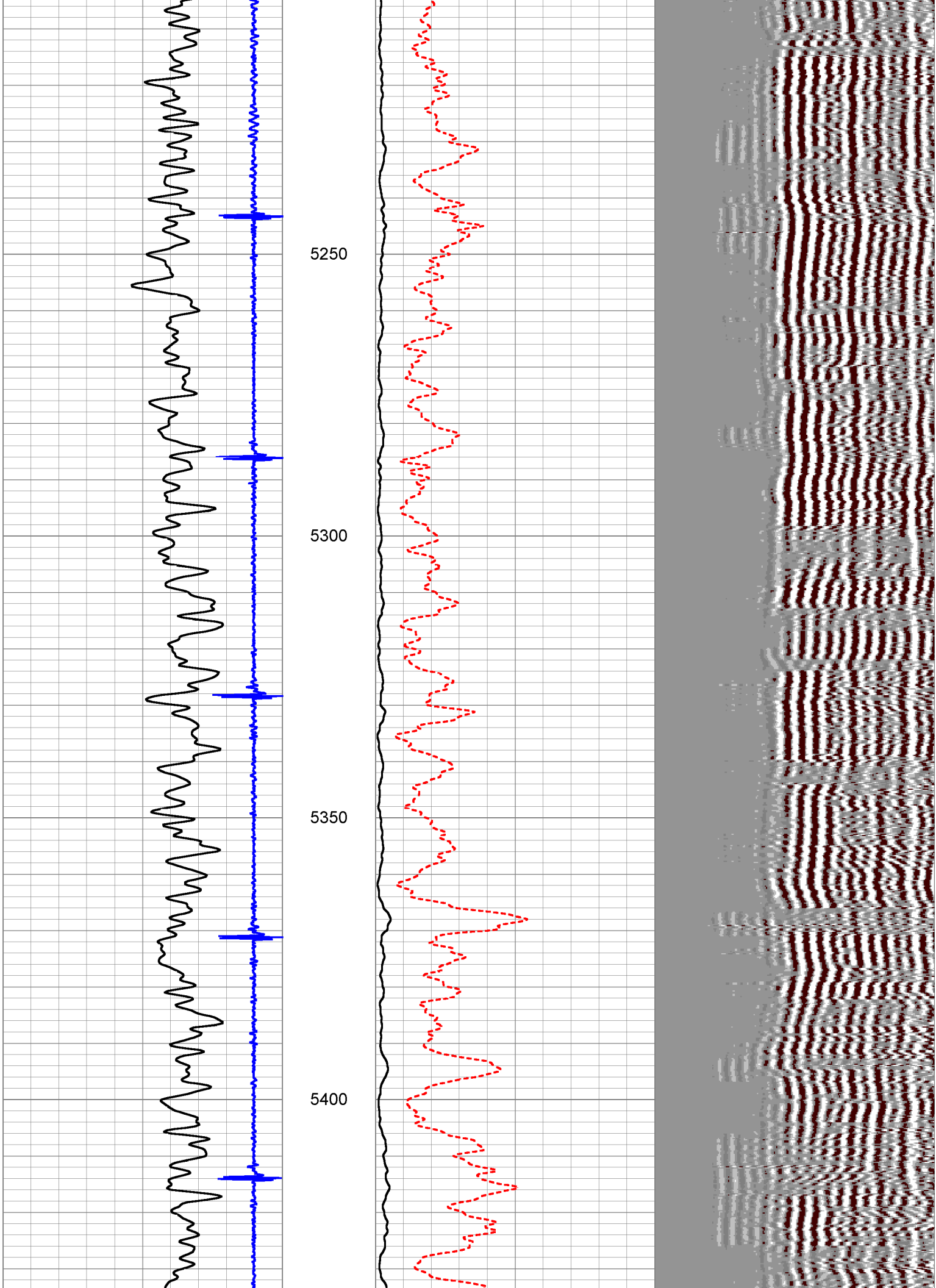
| | |
|----------------------|---|
| Database File: | dillard usx ab 9-16.db |
| Dataset Pathname: | pass8 |
| Presentation Format: | cbldig |
| Dataset Creation: | Wed Mar 12 13:11:47 2008 by Log Halliburton Casedho |
| Charted by: | Depth in Feet scaled 1:240 |

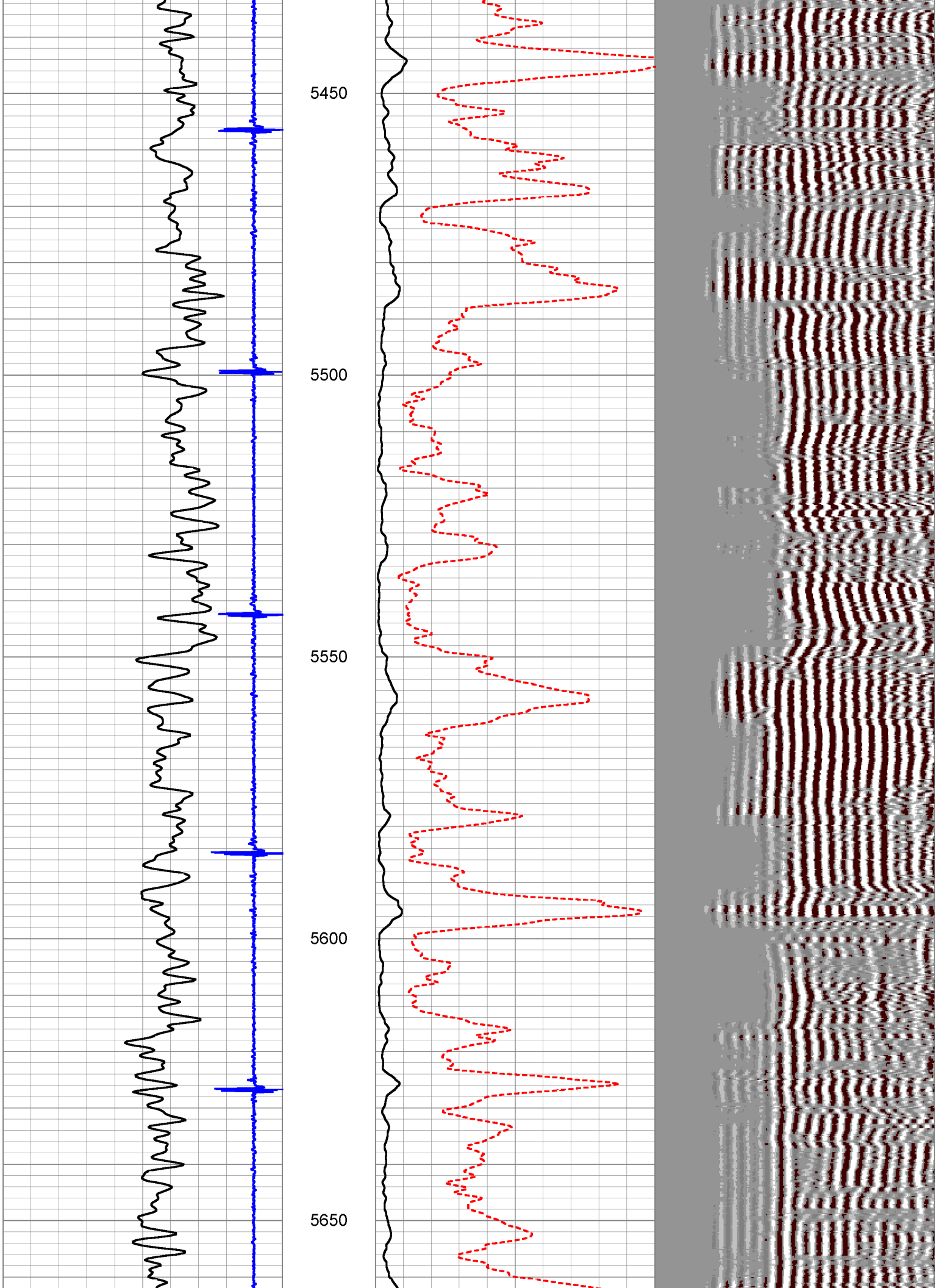
| | | |
|---|----------------|-----|
| 9 | Collar Locator | -1 |
| 0 | GR CBL (GAPI) | 150 |

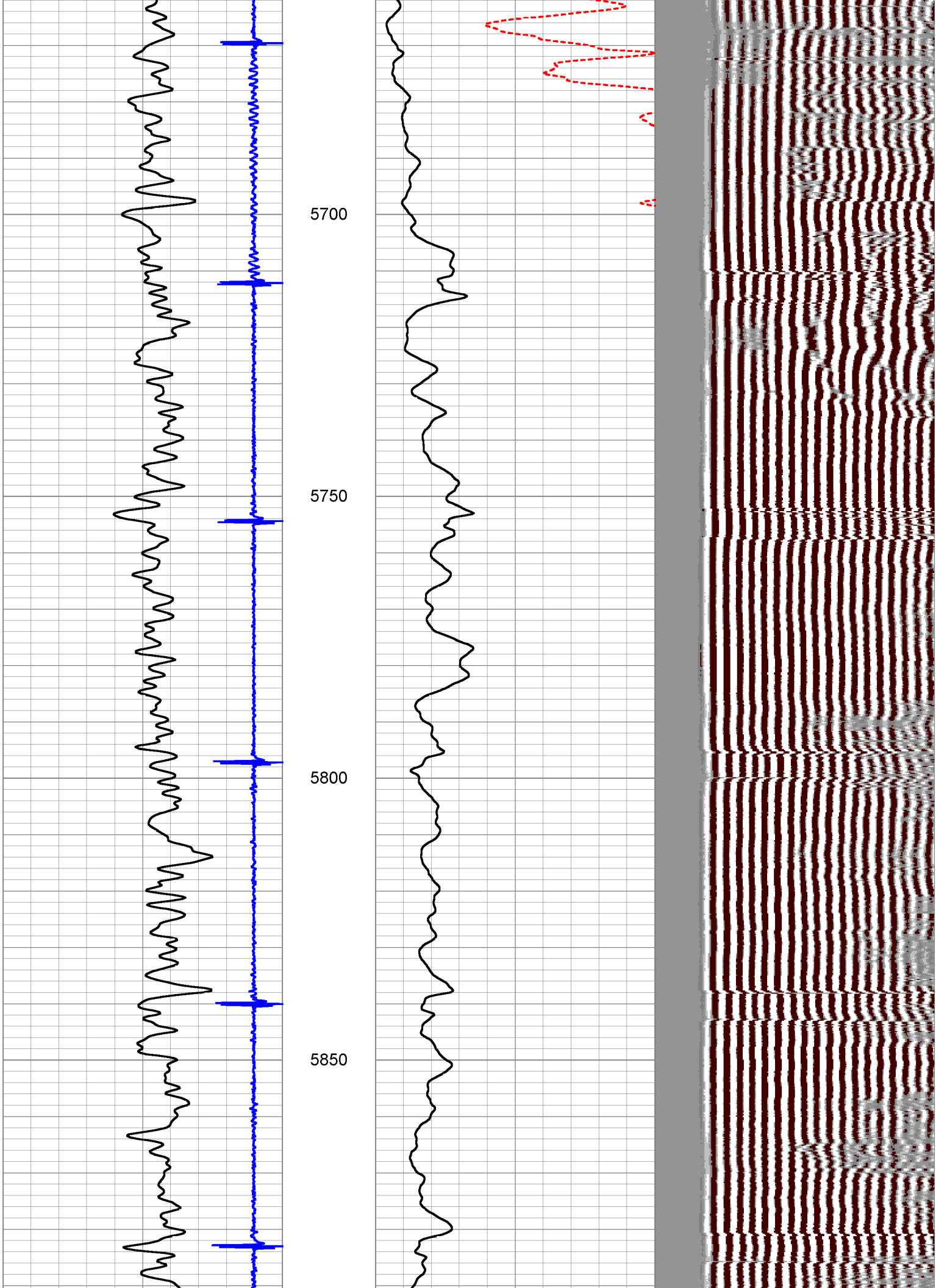
| | | |
|---|--------------------------|-----|
| 0 | Amplitude (mV) | 100 |
| 0 | Amplified Amplitude (mV) | 10 |

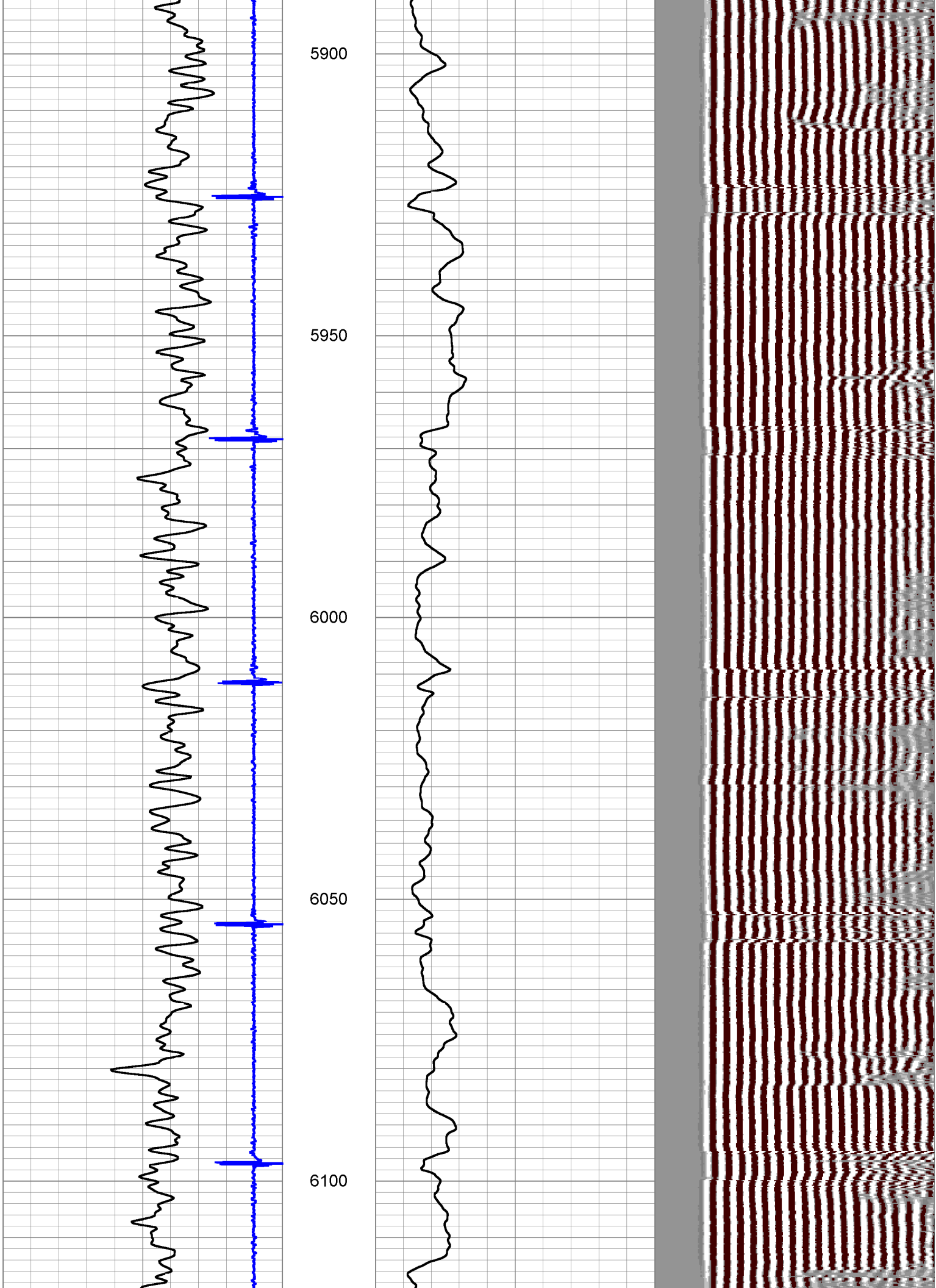
200 Variable Density 1200

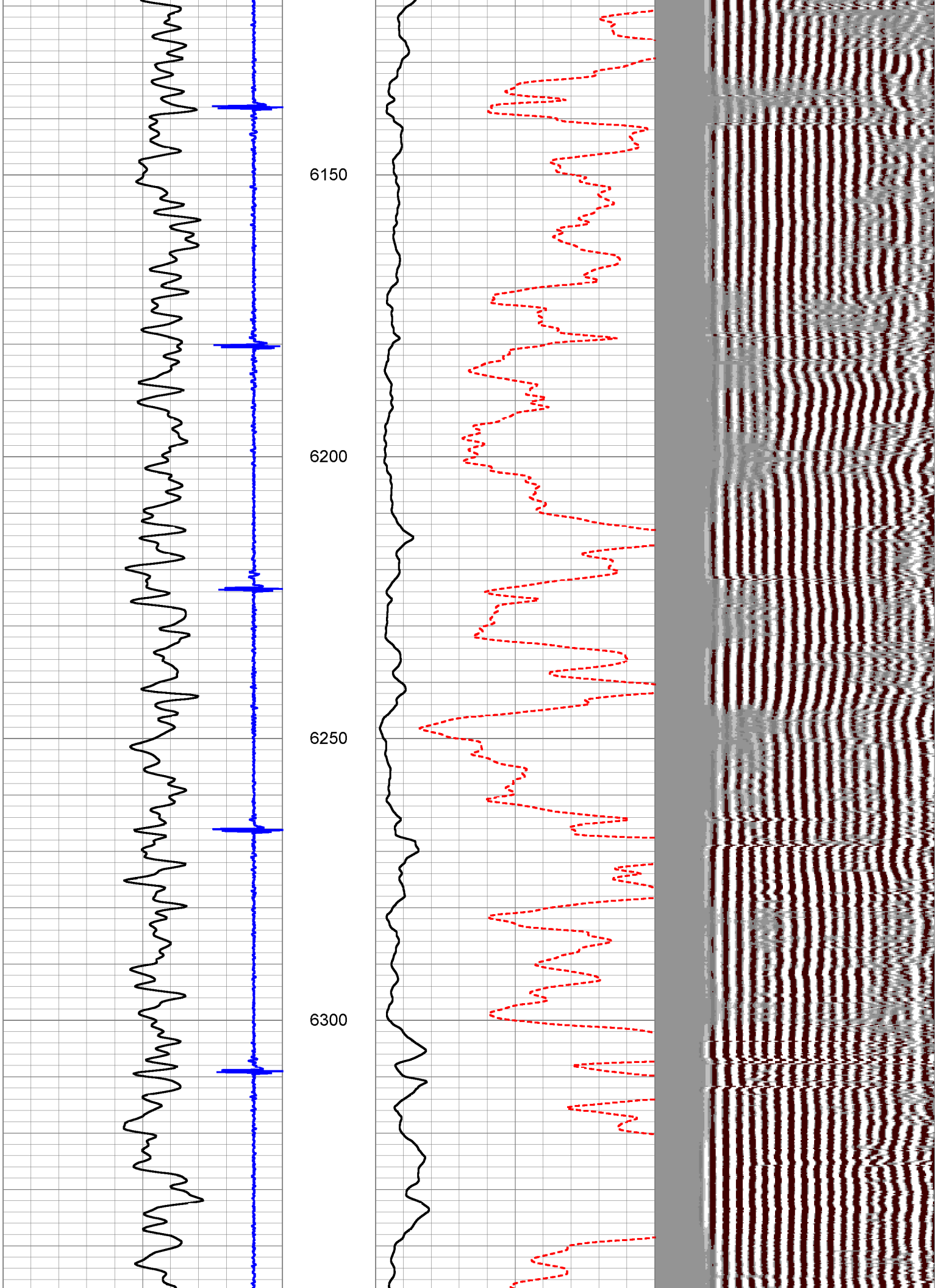


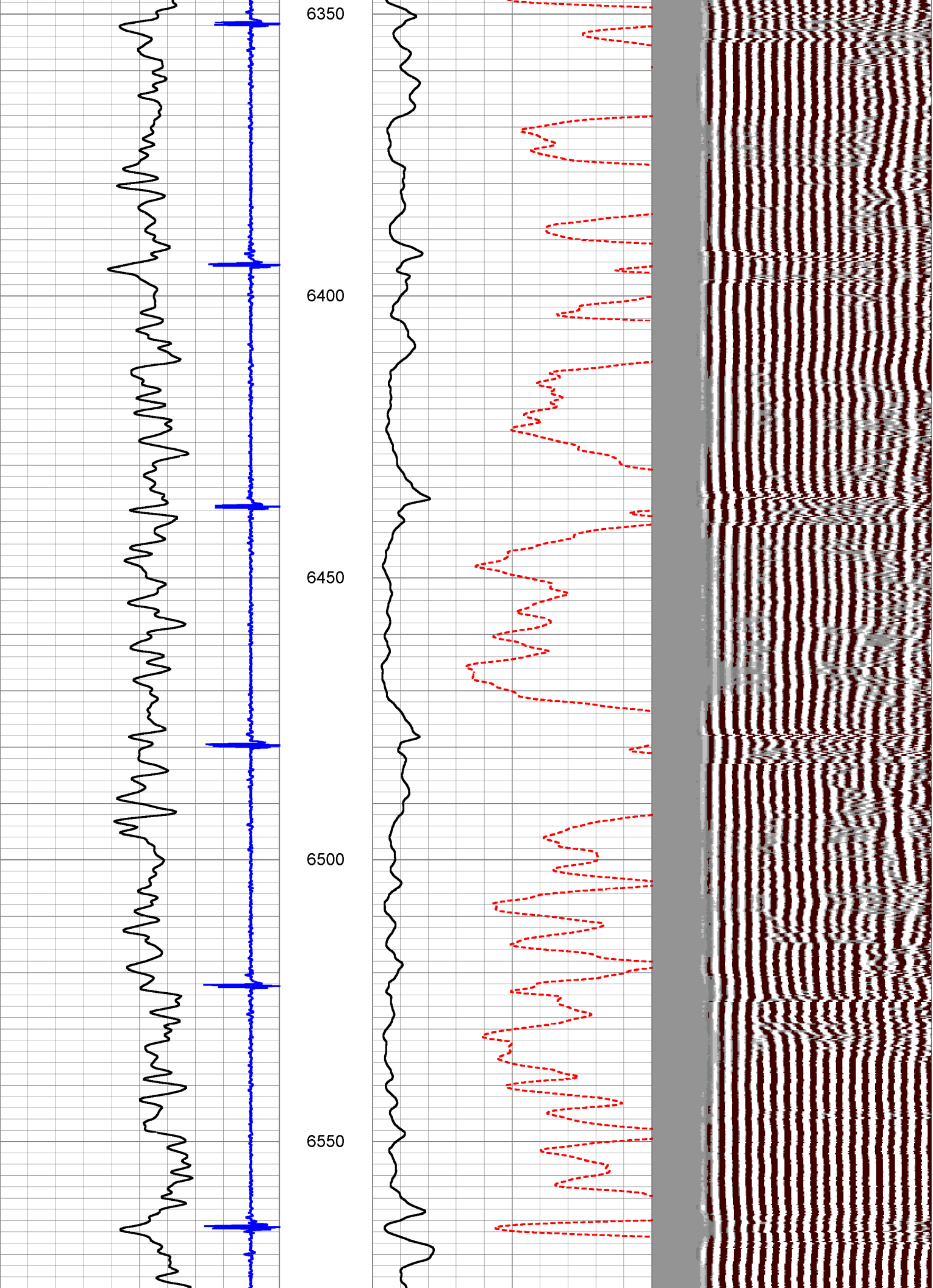


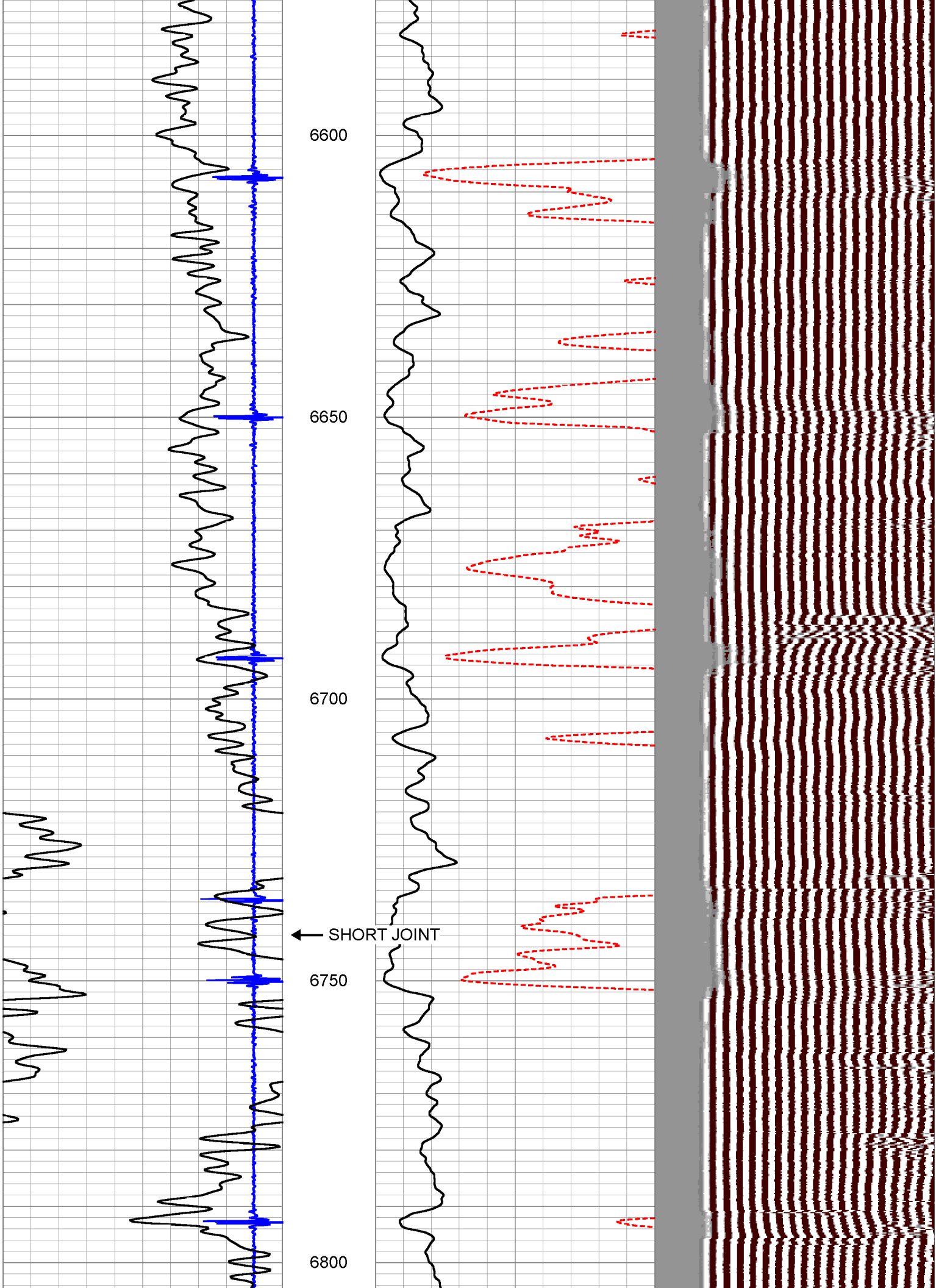


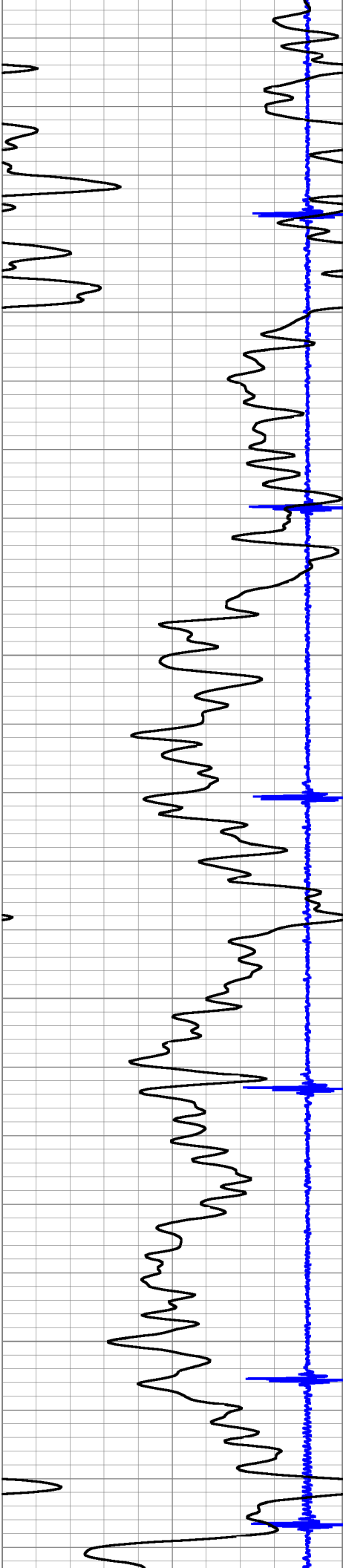












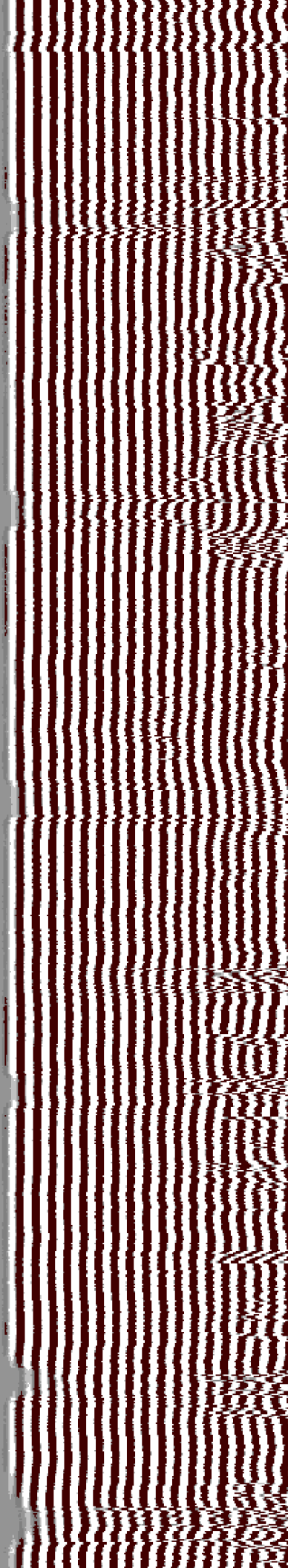
6850

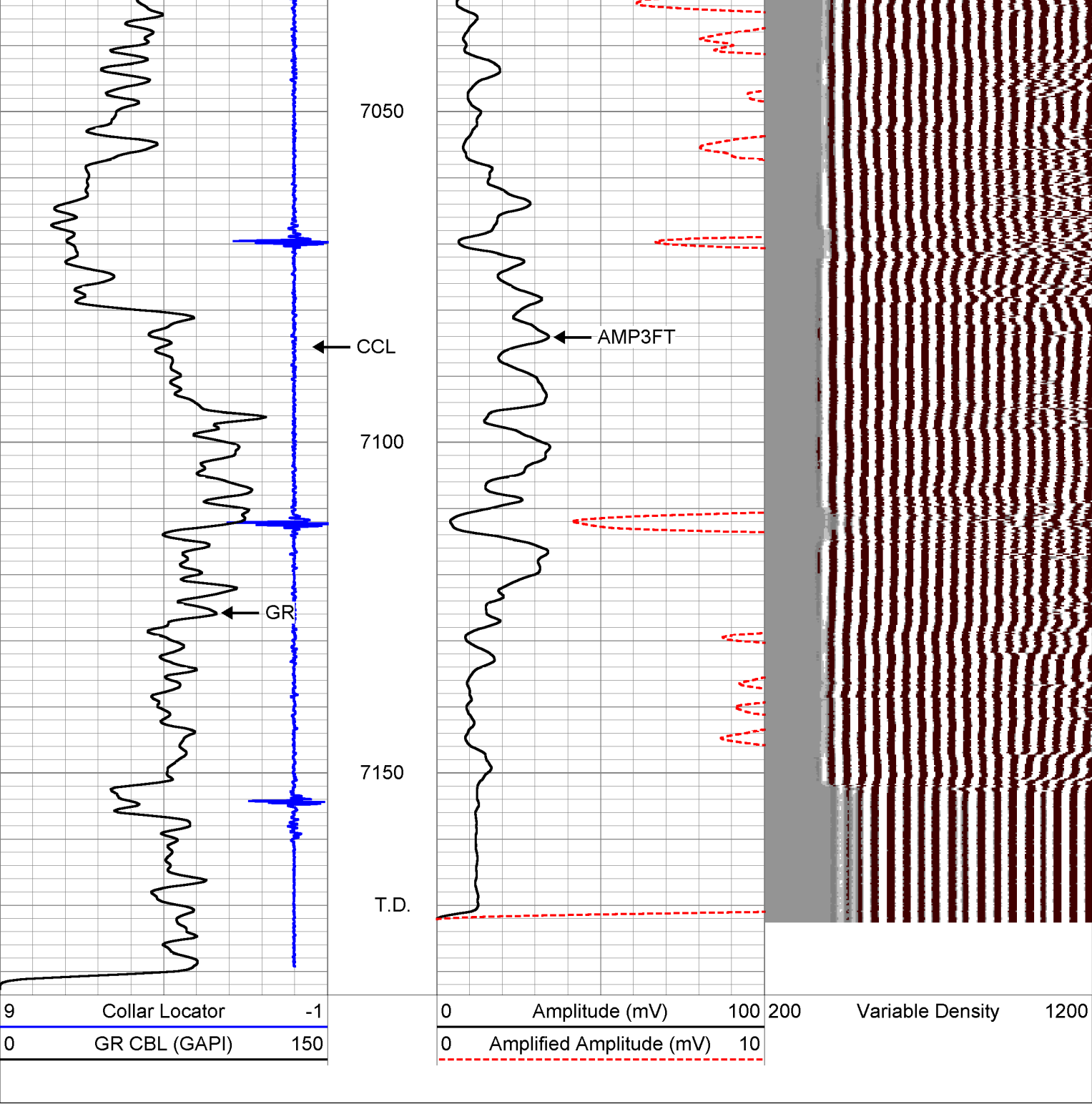
6900

6950

7000

← SHORT JOINT





| | | | |
|-------------|------------------------------|------------------------------|----------|
| Company | Noble Energy Production Inc. | | |
| Well | Dillard USX AB 09-16 | | |
| Field | Wattenberg | | |
| County | Weld | State | Colorado |
| HALLIBURTON | | Cement Bond Gamma Ray CCL | |