



SUPERIOR
Black Lick, Pa.
Mercer, Pa.
Wooster, Ohio
Cleveland, Ok.

GAMMA RAY C.C.L.
CEMENT BOND V.D.L.
LOG WAS RAN UNDER 1000 PSI.

Company NOBLE ENERGY INC.		Company NOBLE ENERGY INC.	
Well DEJONG USX AB13-06P		Well DEJONG USX AB13-06P	
Field WATTENBERG		Field WATTENBERG	
County WELD		County WELD	
State COLORADO		State COLORADO	
Location: 2120' FNL & 1980' FWL SW NW		API # : 051233208600	
Permanent Datum SEC 13 TWP 7N RGE 64W		Other Services	
Log Measured From KB		Elevation 4820	
Drilling Measured From KB		K.B. 4833 D.F. 4832 G.L. 4820	
Date 01-OCT-2010	Run Number ONE		
Depth Driller 7185	Depth Logger 7112		
Bottom Logged Interval 7111	Top Log Interval 1995		
Open Hole Size 7-7/8"	Type Fluid WATER		
Density / Viscosity N/A	Max. Recorded Temp. 218° F		
Estimated Cement Top 2139	Time Well Ready LEED RIG 723		
Time Logger on Bottom 2-3/4LH	Equipment Number 0703		
Location 45	Recorded By LEROY HOBBS		
Witnessed By S. ARMSTRONG			
Borehole Record		Tubing Record	
Run Number	Bit From To	Size	Weight From To
Casing Record	Size	Wgt/Ft	Top Bottom
Surface String			
Prot. String			
Production String 4-1/2			
Liner			

<<< Fold Here >>>

All interpretations are opinions based on inferences from electrical or other measurements and we cannot and do not guarantee the accuracy or correctness of any interpretation, and we shall not, except in the case of gross or willful negligence on our part, be liable or responsible for any loss, costs, damages, or expenses incurred or sustained by anyone resulting from any interpretation made by any of our officers, agents or employees. These interpretations are also subject to our general terms and conditions set out in our current Price Schedule.

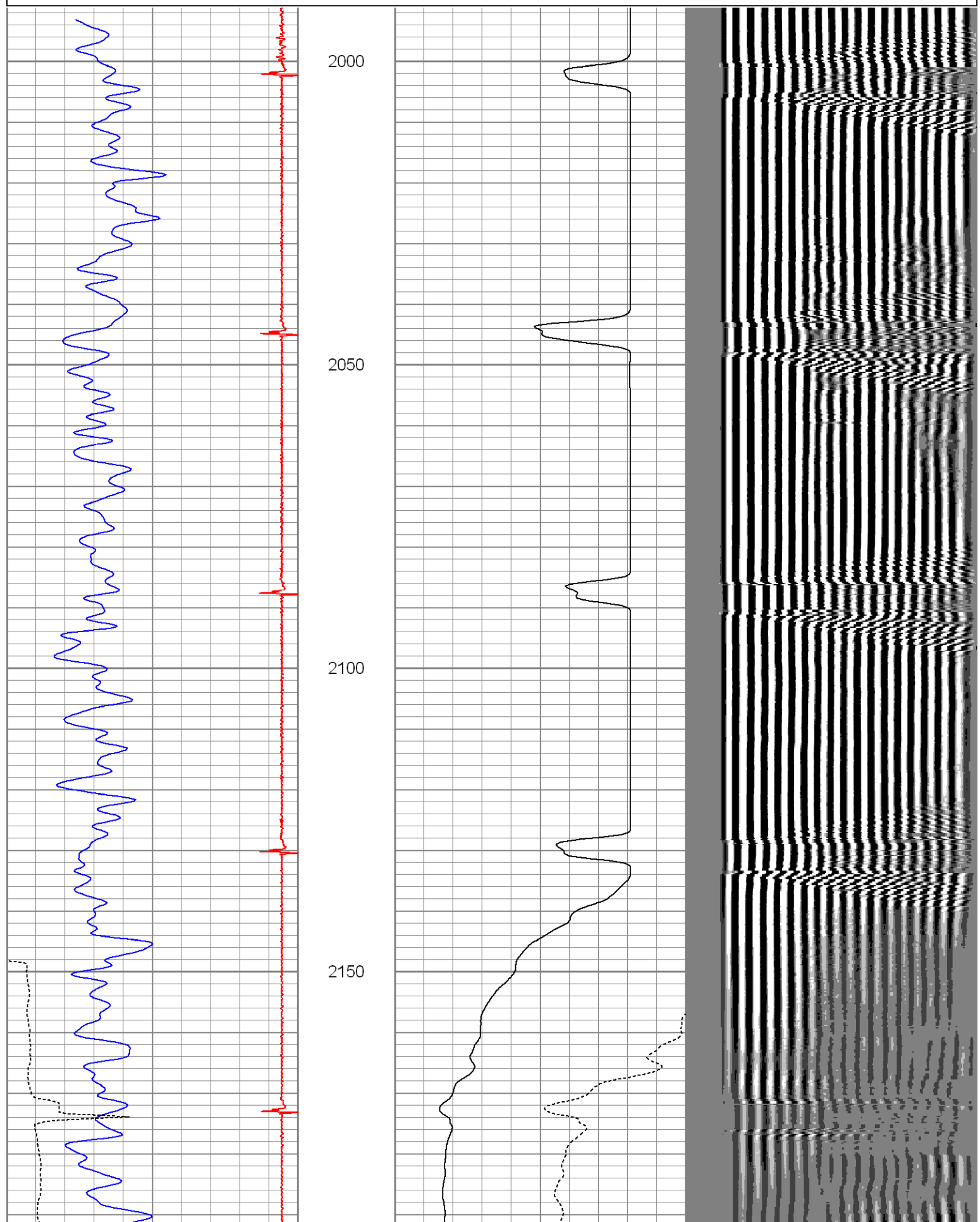
Comments

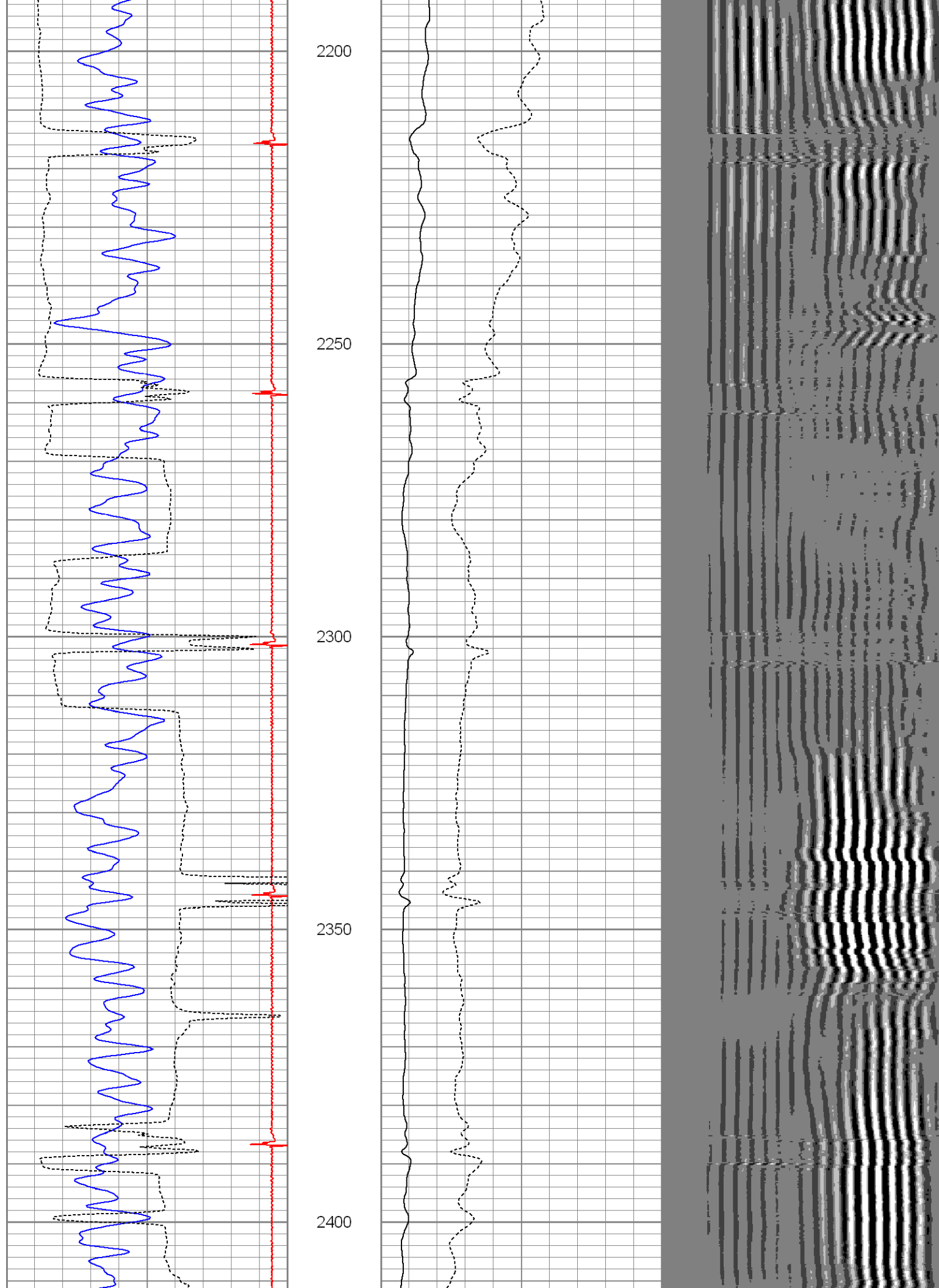
THANK YOU FOR USING SUPERIOR WELL SERVICES.
LOG WAS RAN UNDER N1000 PSI.

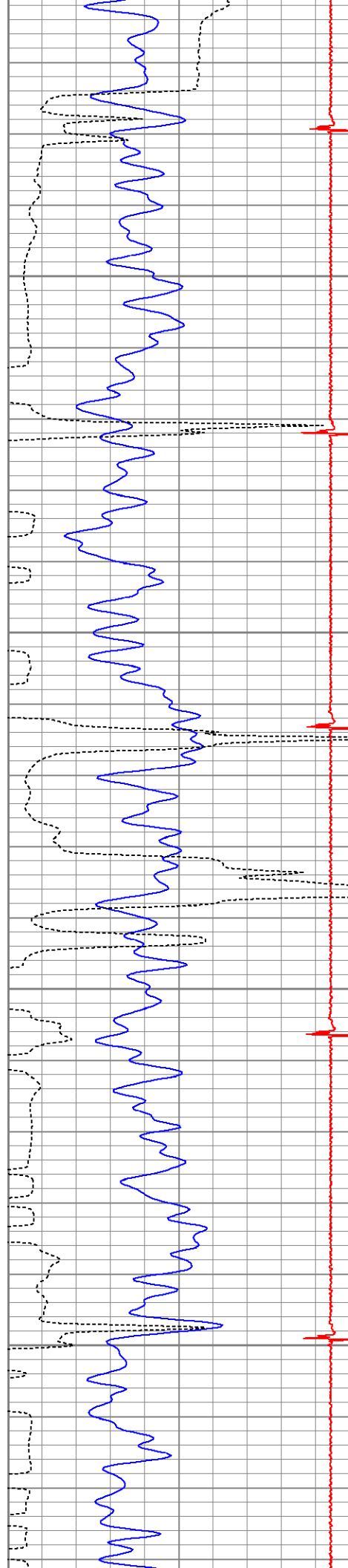
30	Gamma Ray (GAPI)	130
9	CCL	-0.5
240	TT3FT (usec)	340

0	Amplified Amplitude (mV)	30
0	Amplitude (mV)	100

200 VDL 1200





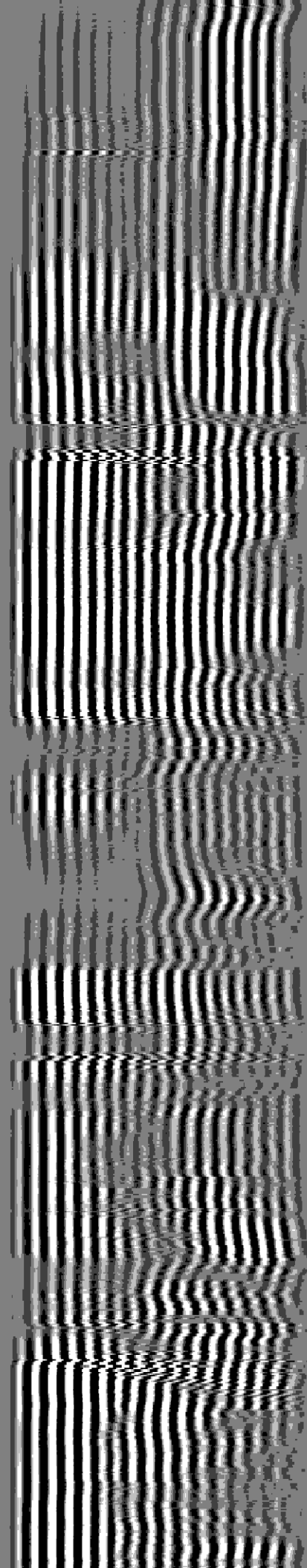
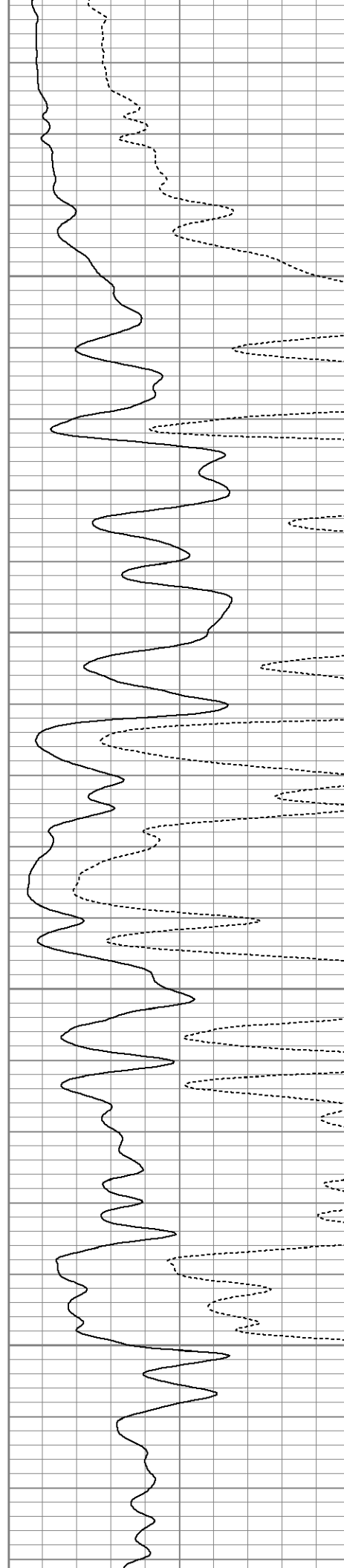


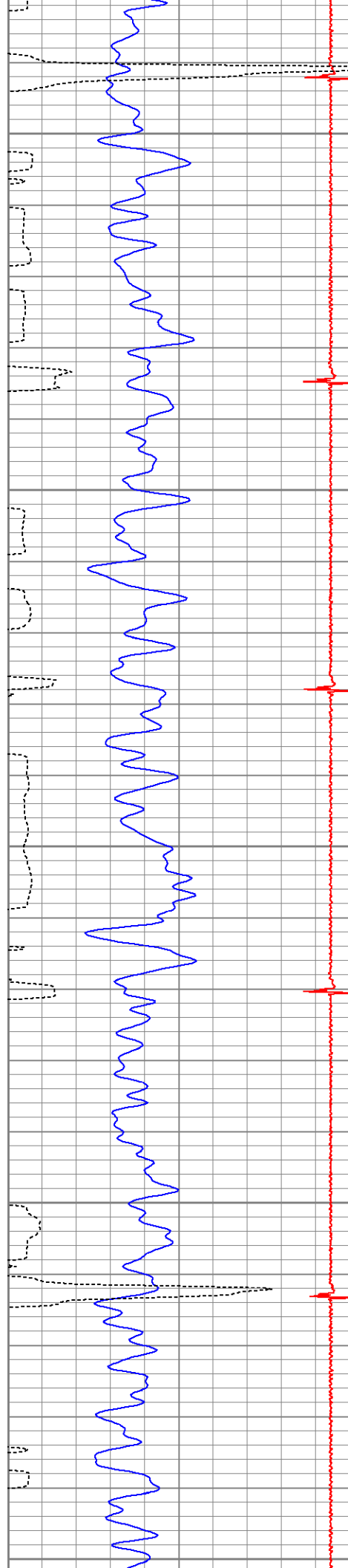
2450

2500

2550

2600





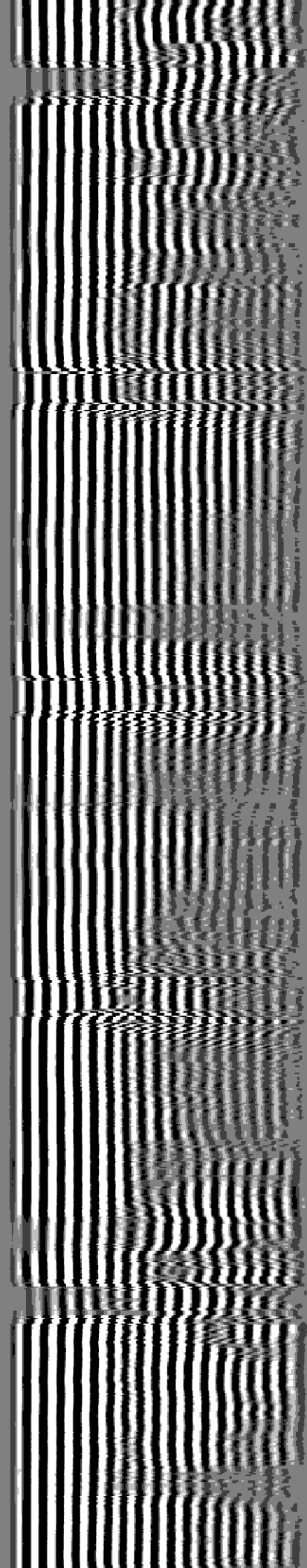
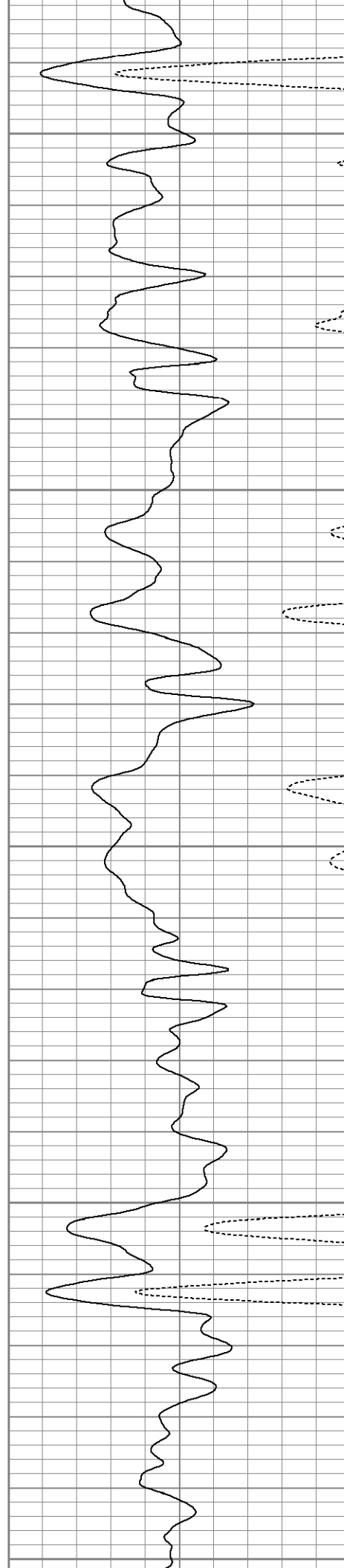
2650

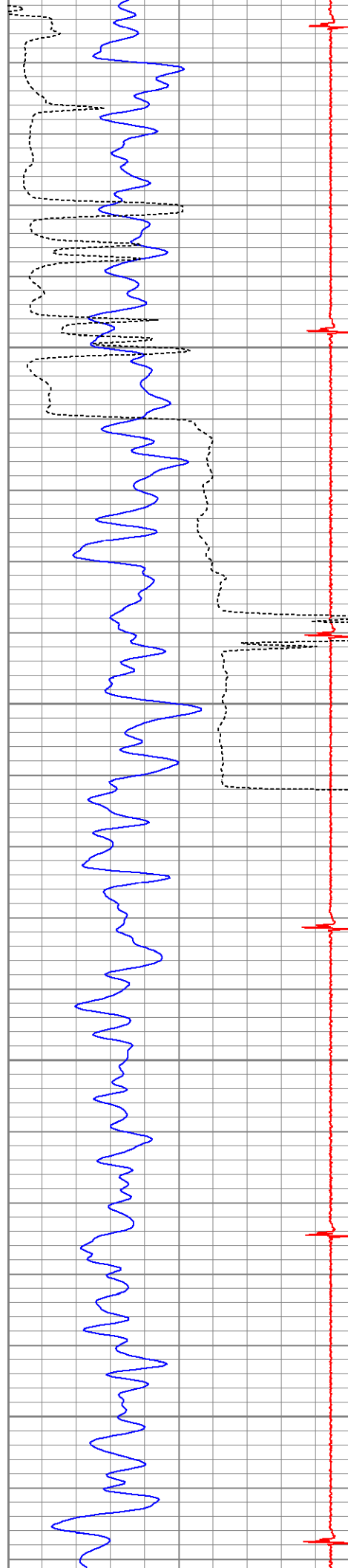
2700

2750

2800

2850



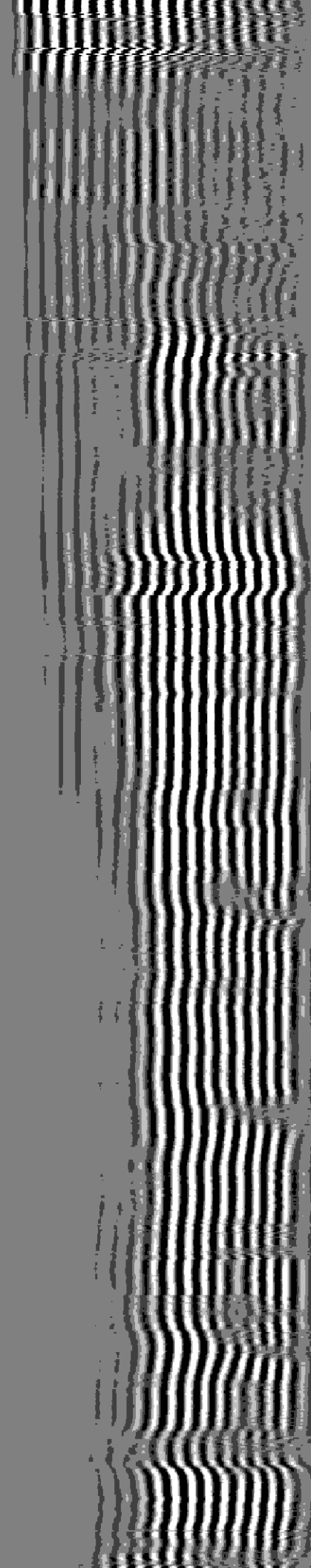
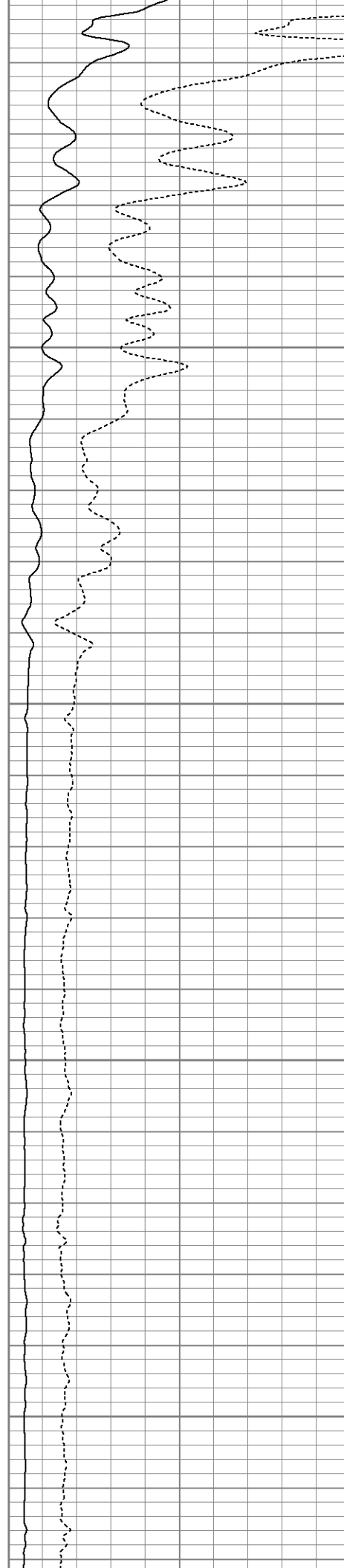


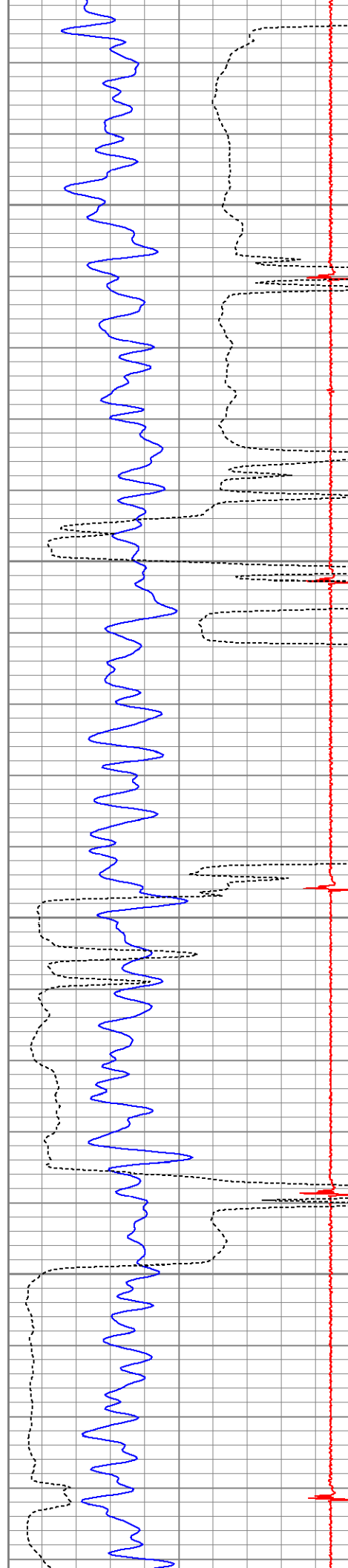
2900

2950

3000

3050



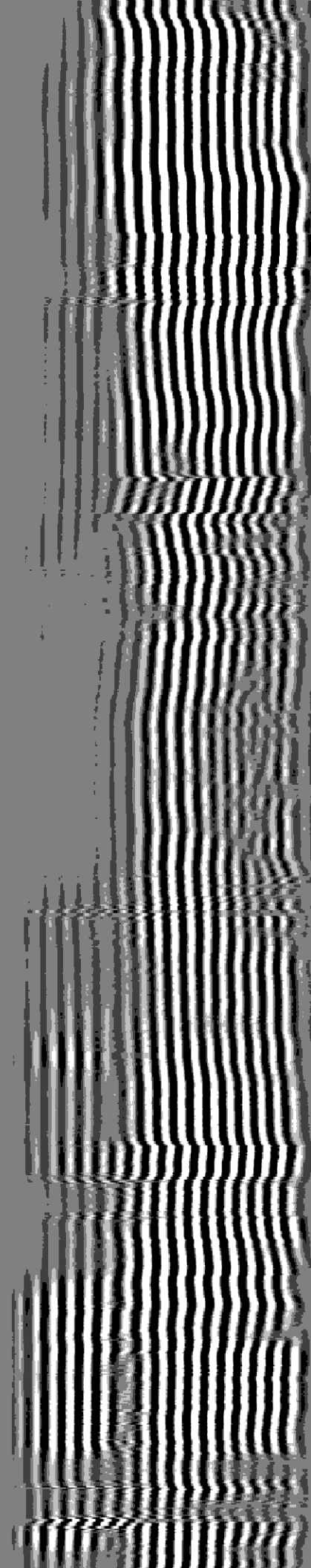
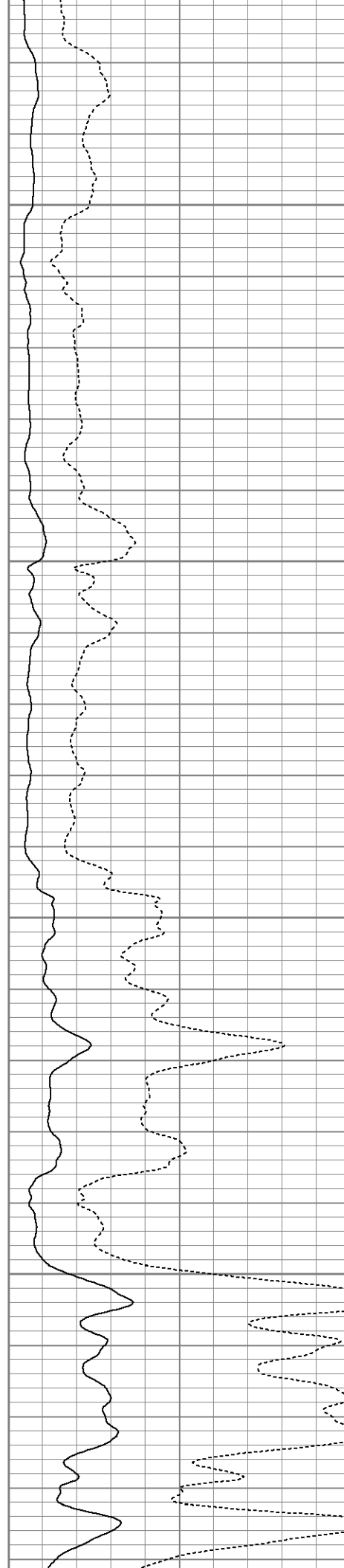


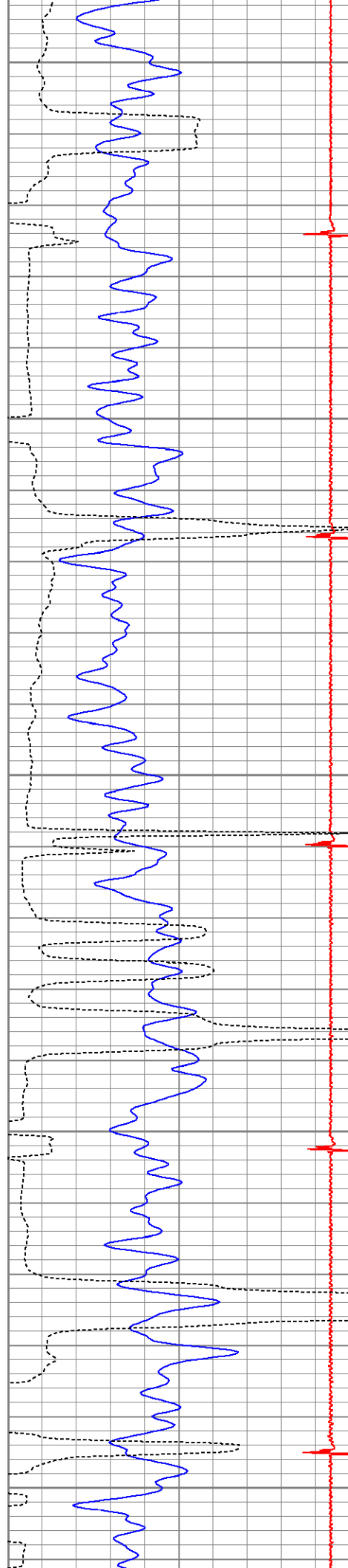
3100

3150

3200

3250





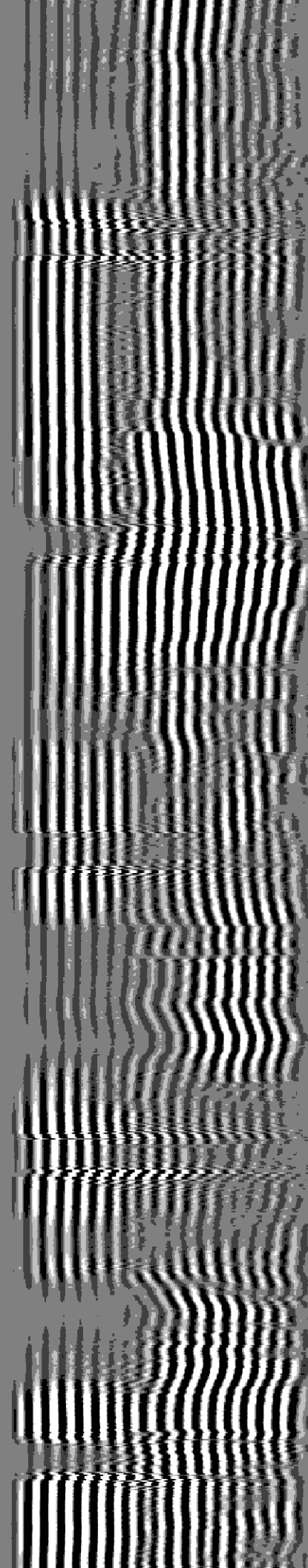
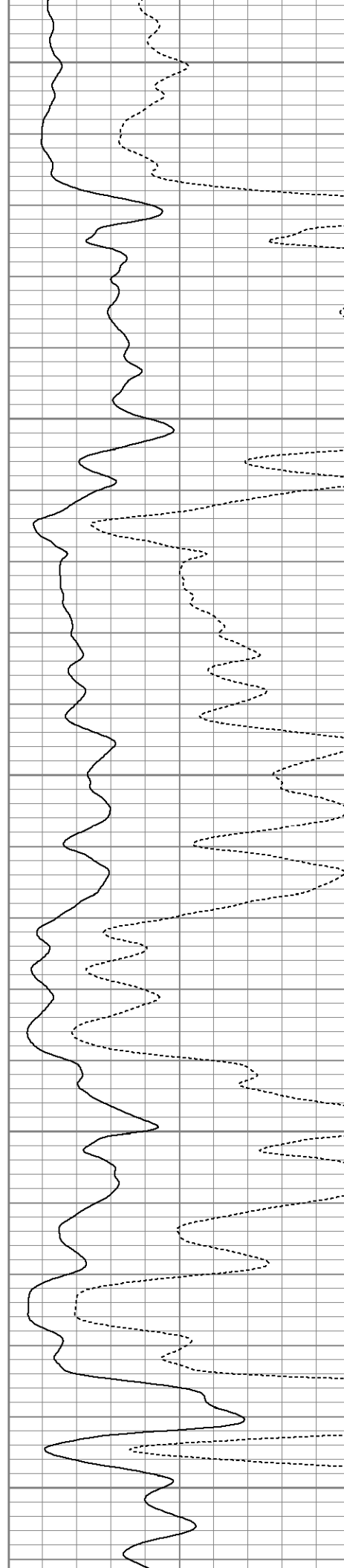
3300

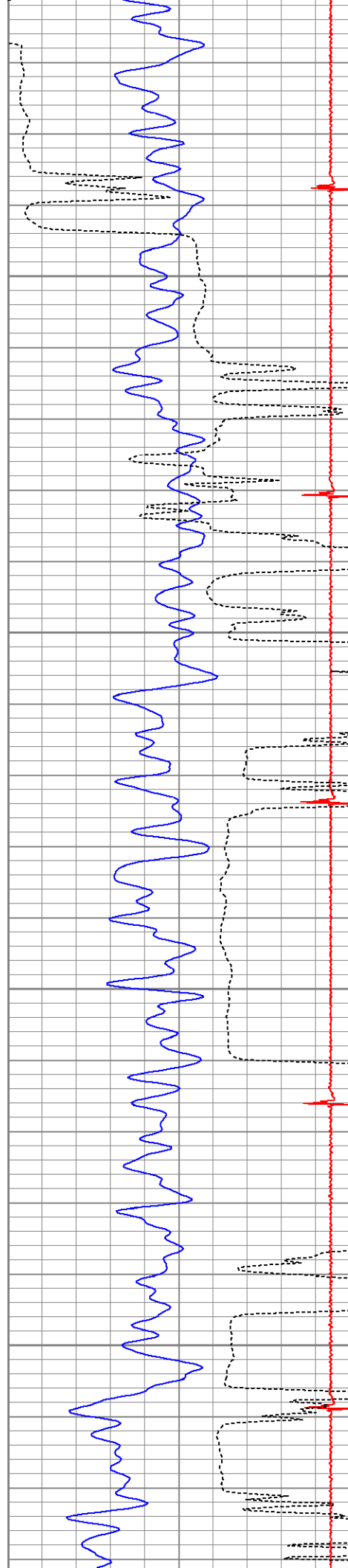
3350

3400

3450

3500



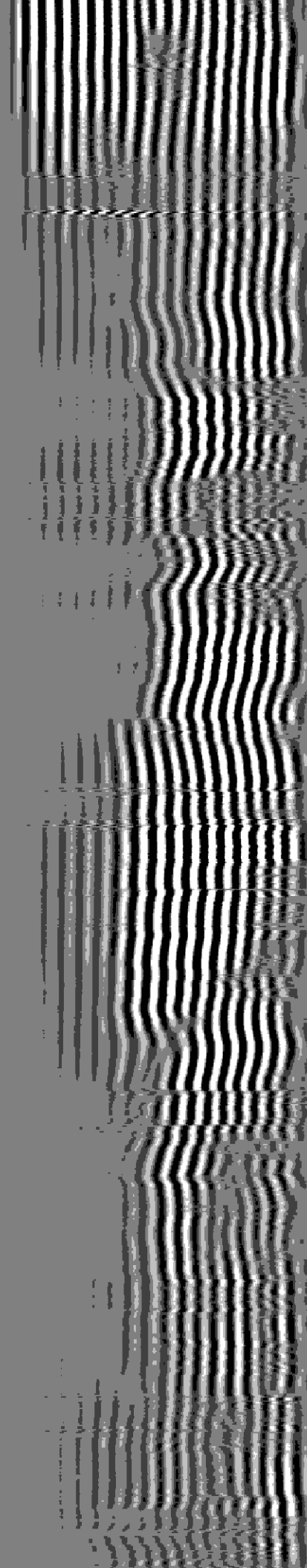
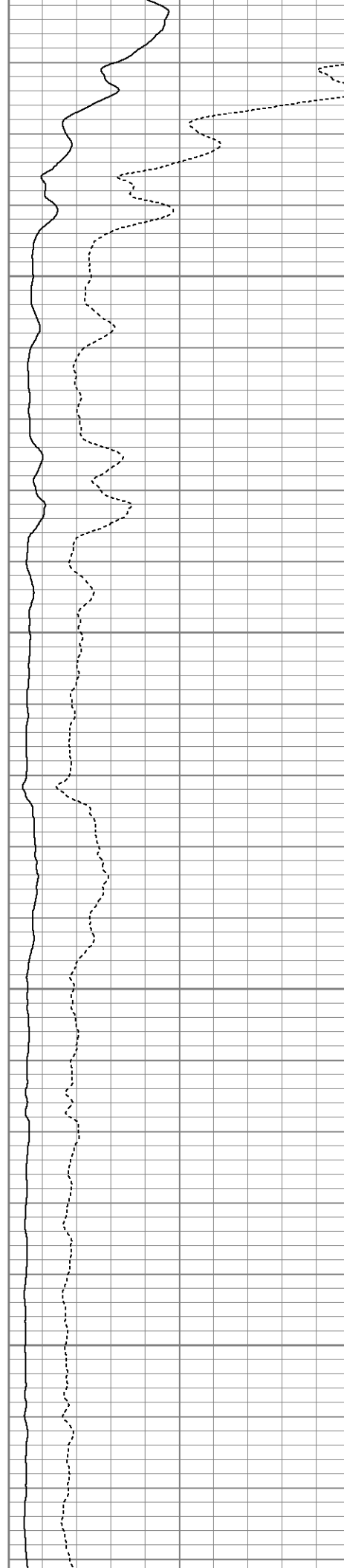


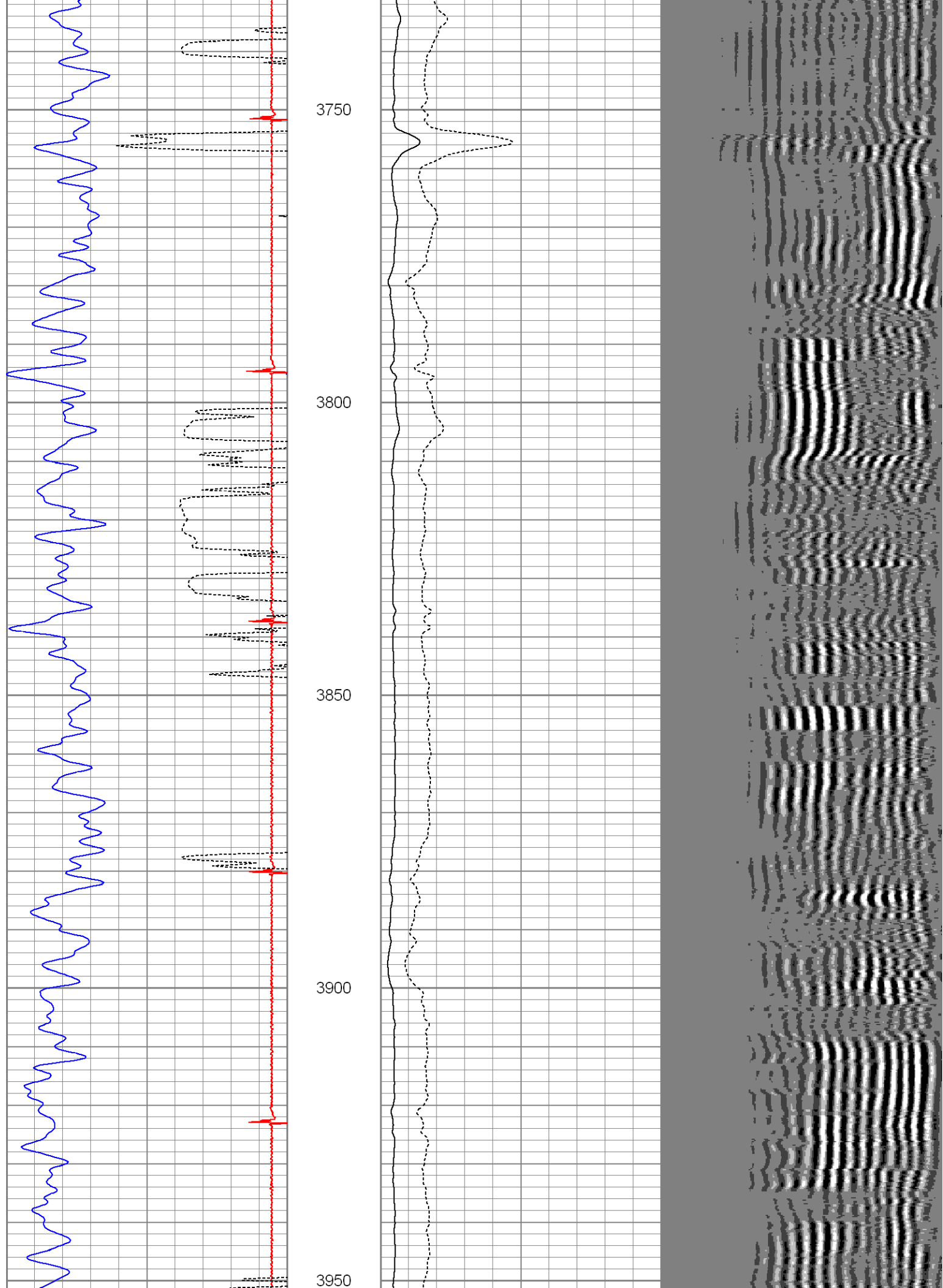
3550

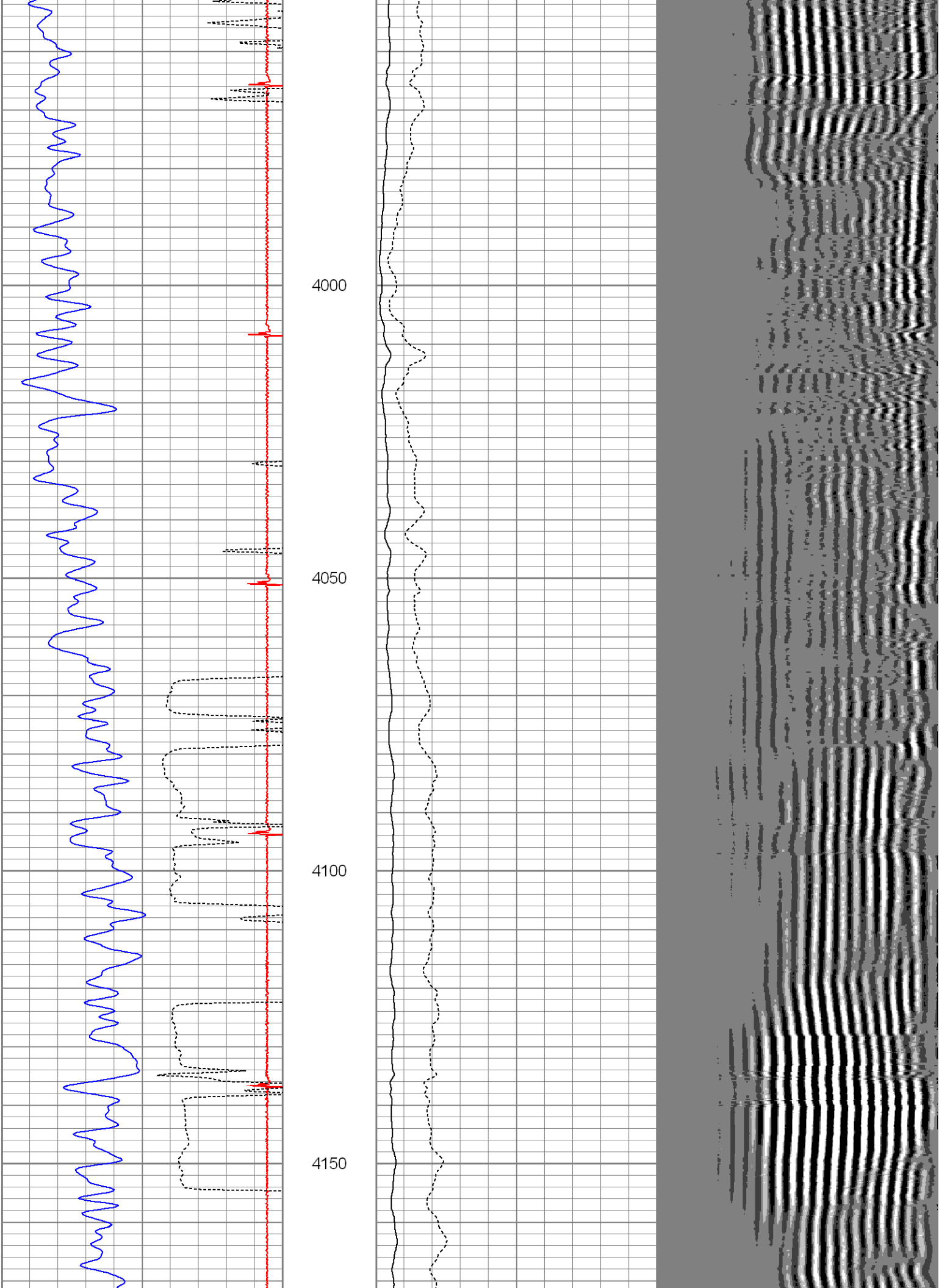
3600

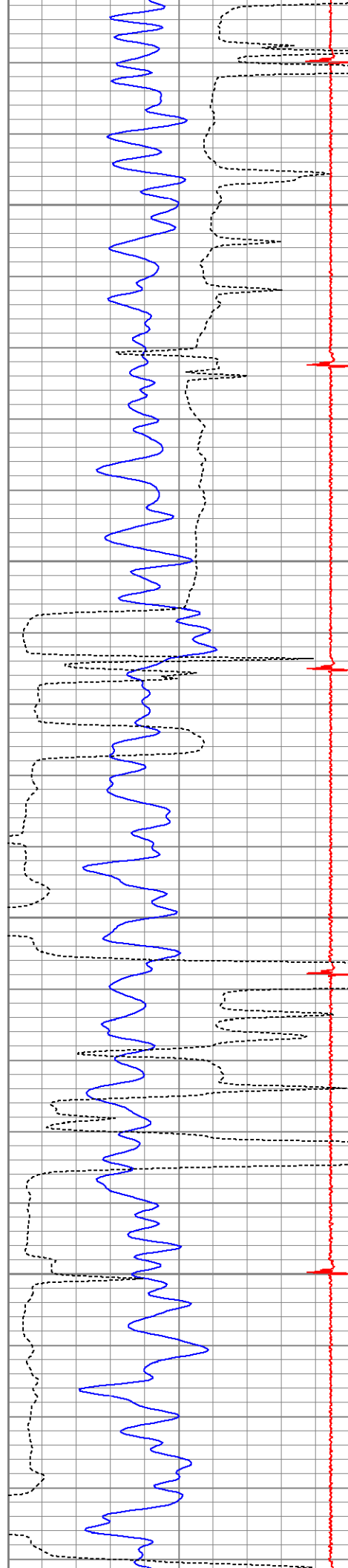
3650

3700







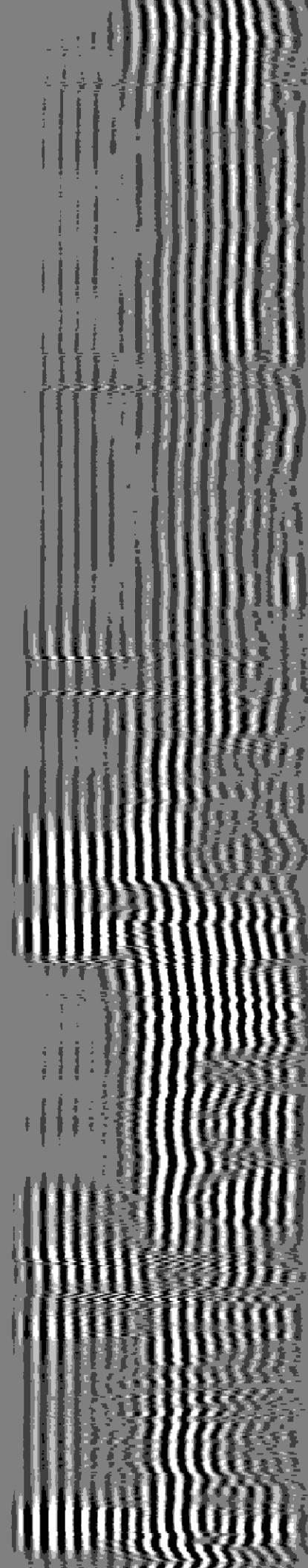
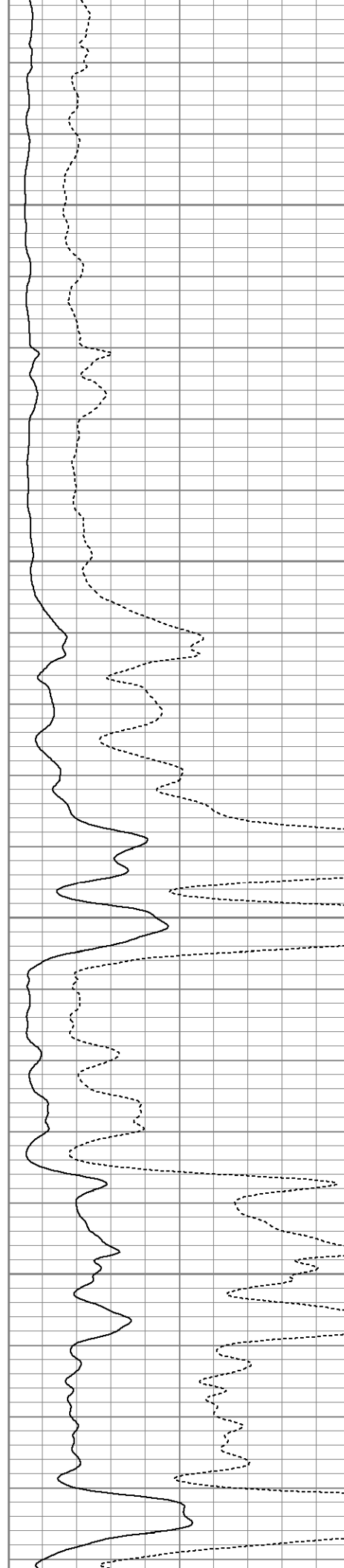


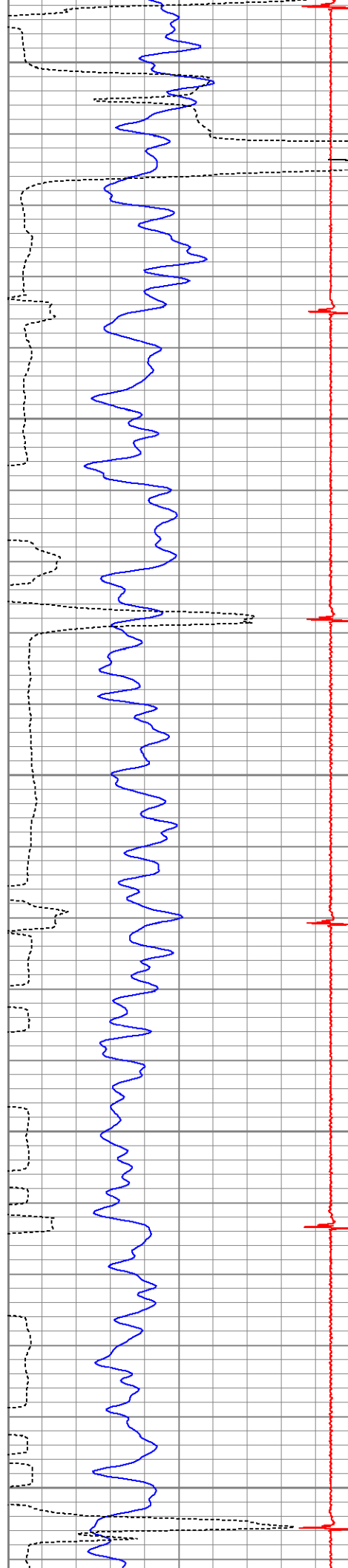
4200

4250

4300

4350





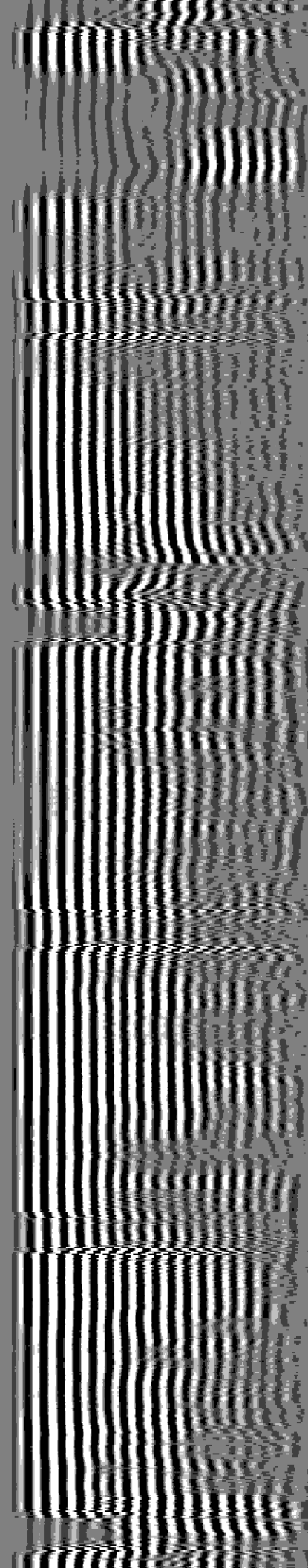
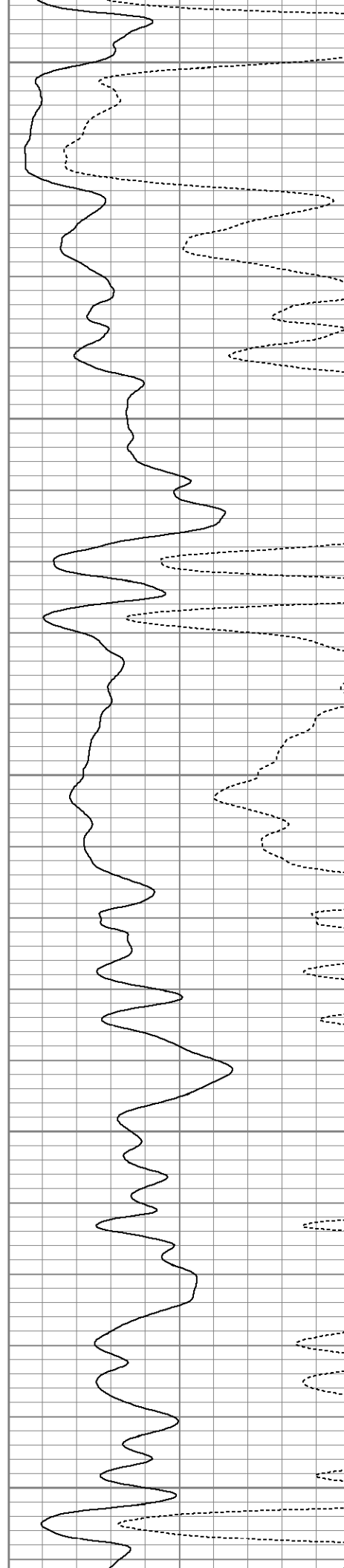
4400

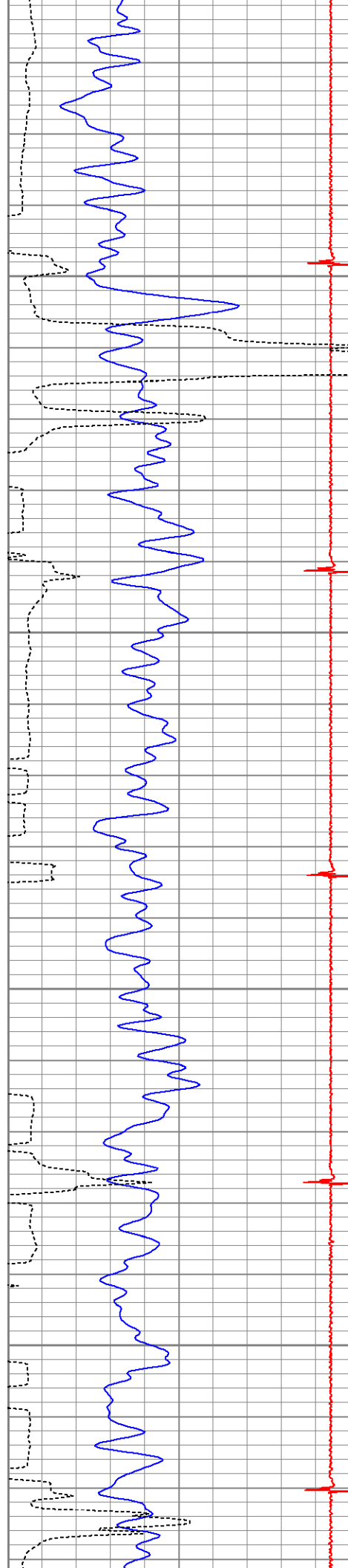
4450

4500

4550

4600



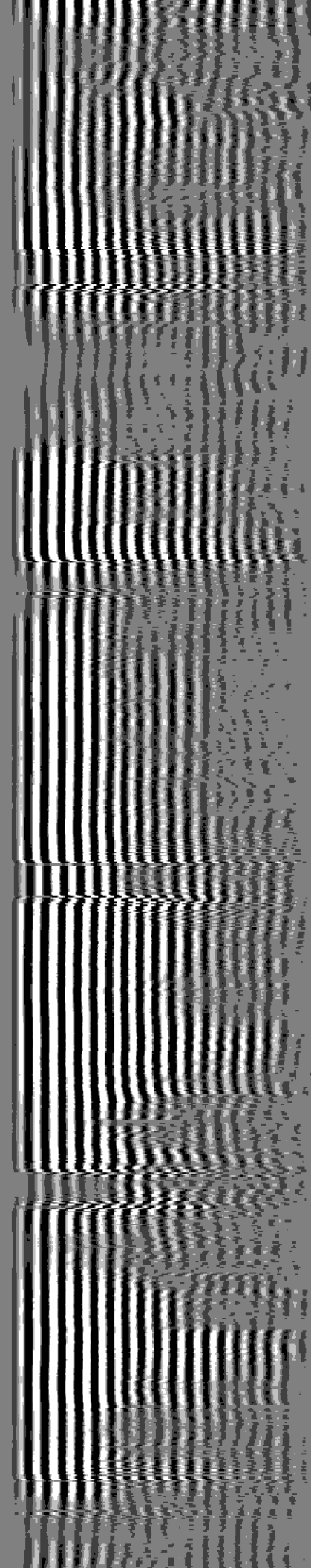
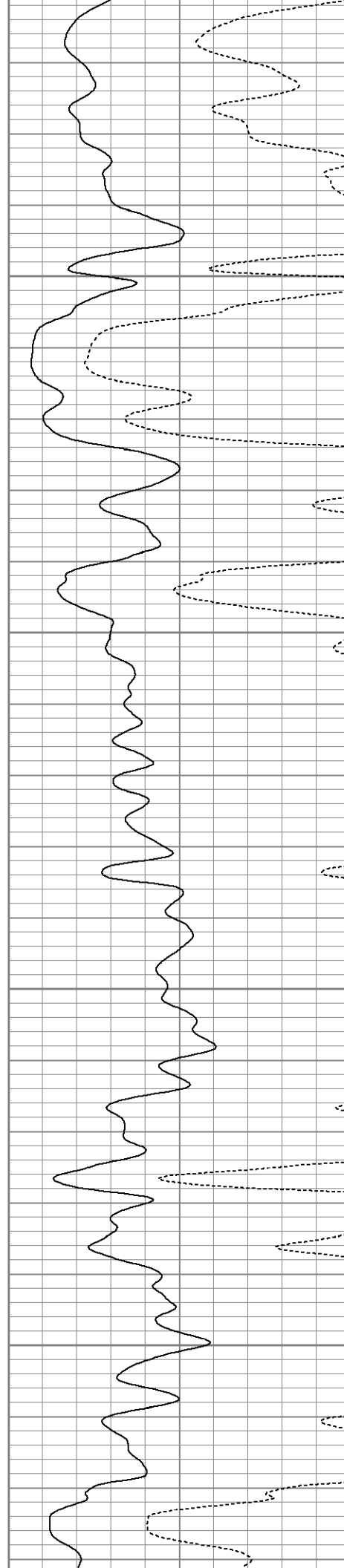


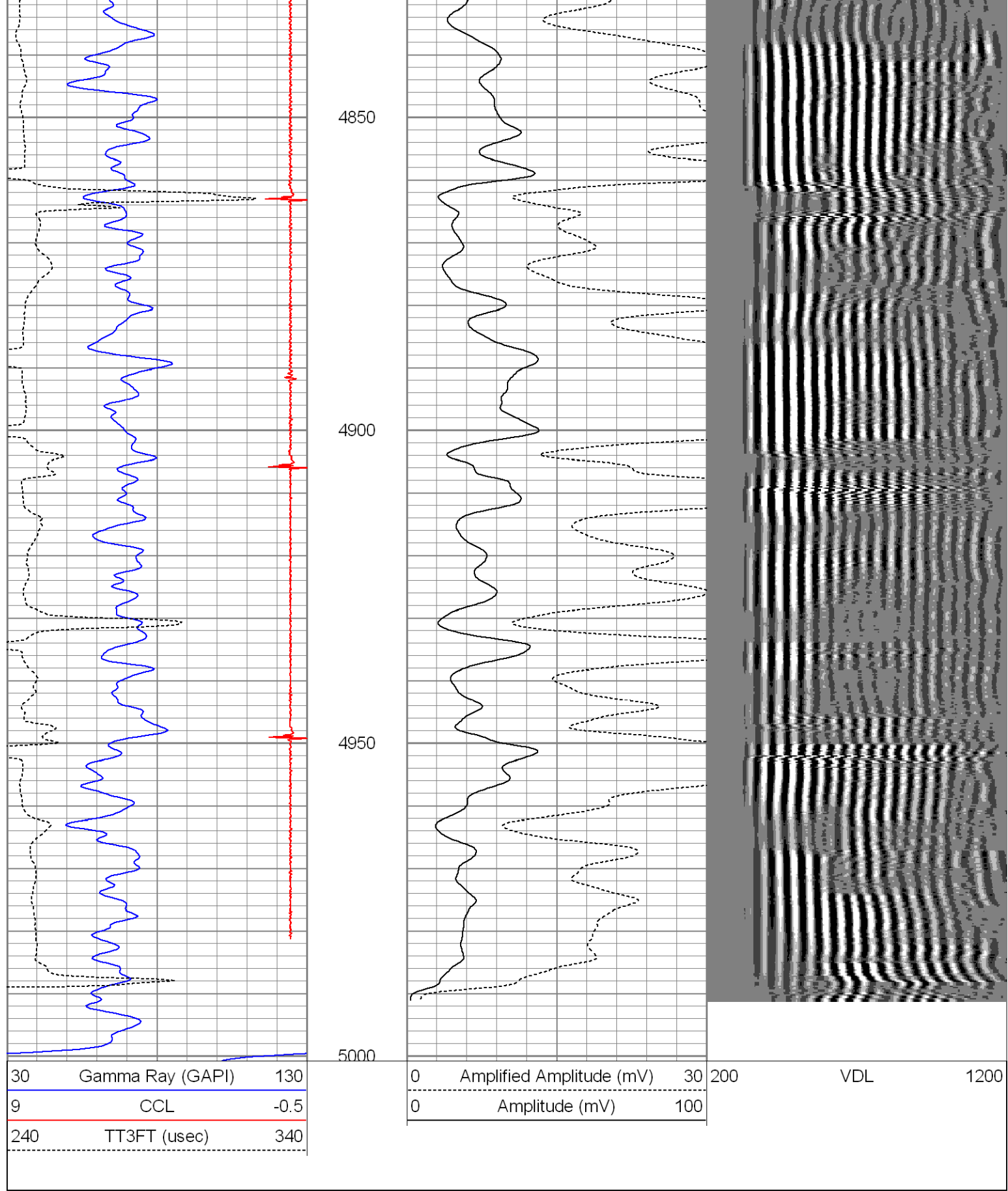
4650

4700

4750

4800



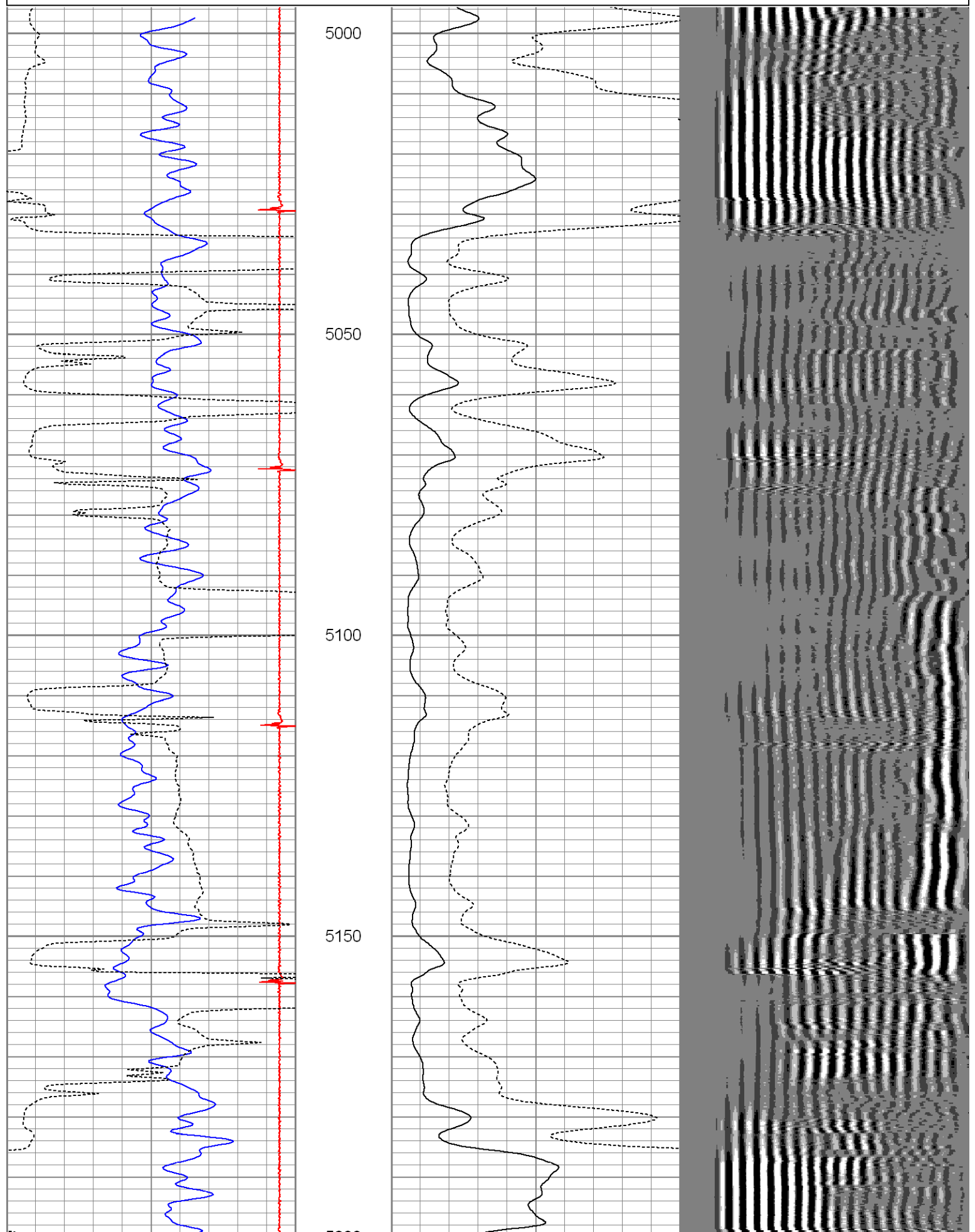


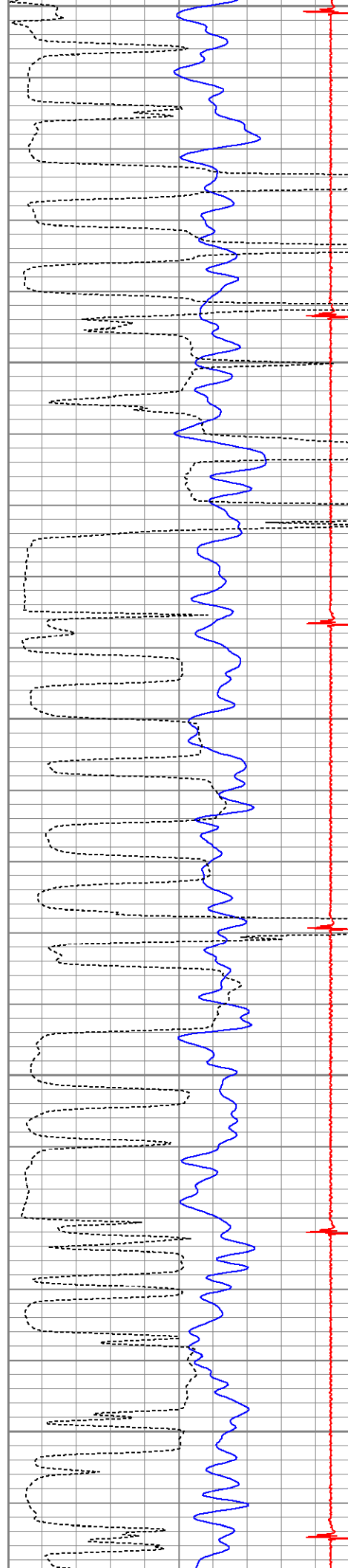
Database File: dejong13-06pcbl.db
Dataset Pathname: pass4
Presentation Format: nuexbond
Dataset Creation: Tue Jan 01 01:15:07 2002 by Log Open-Cased 071220
Charted by: Depth in Feet scaled 1:240



9	CCL	-0.5
240	TT3FT (usec)	340

0	Amplitude (mV)	100
---	----------------	-----





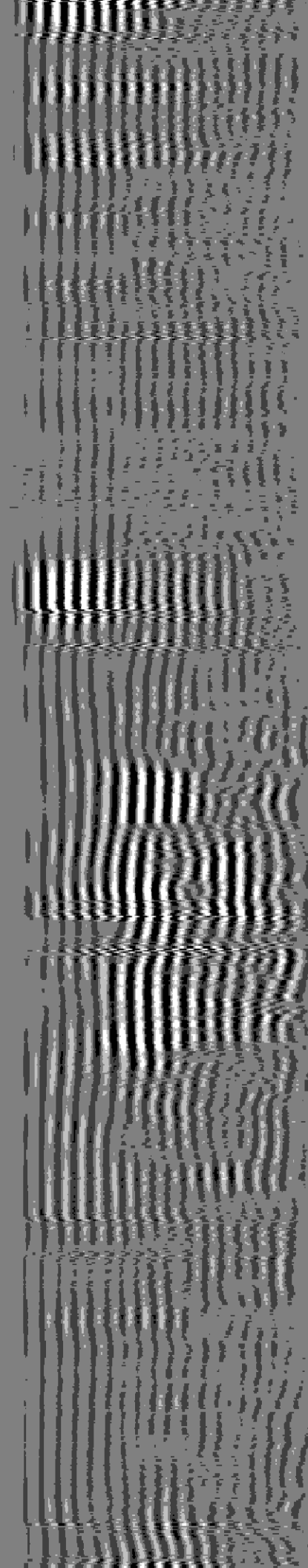
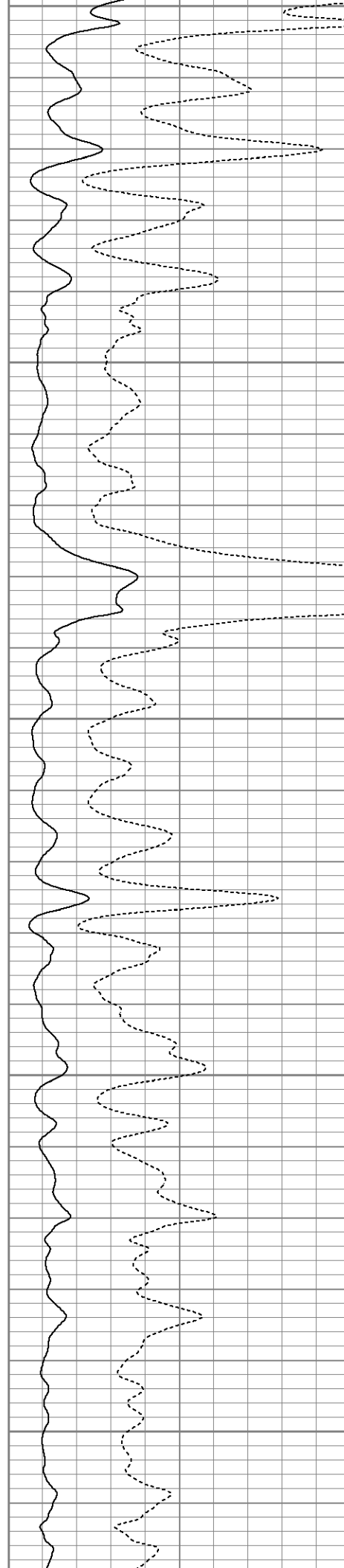
5200

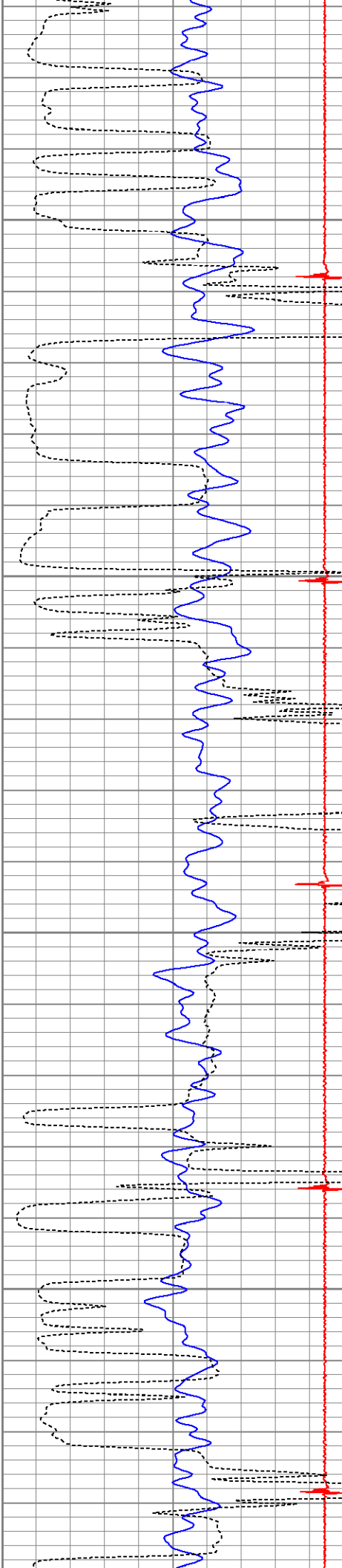
5250

5300

5350

5400



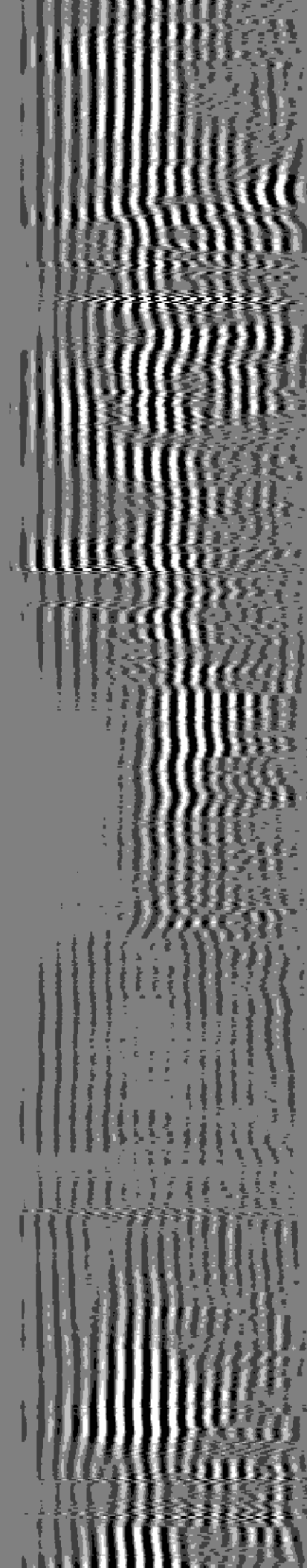
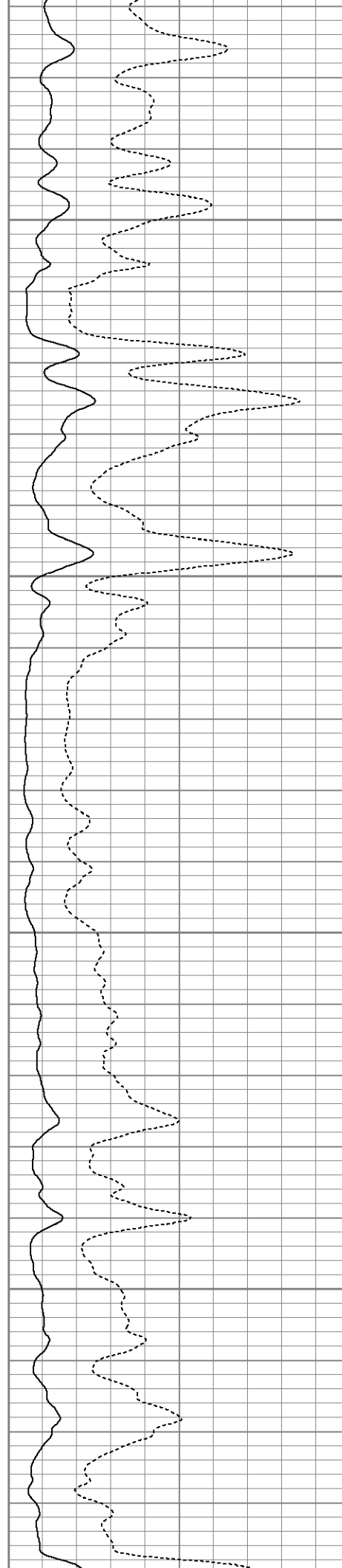


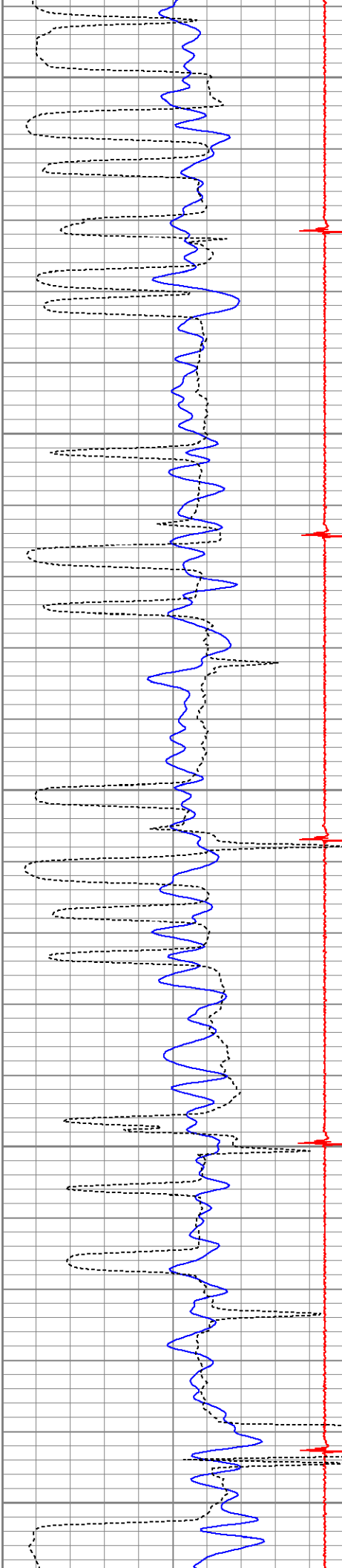
5450

5500

5550

5600





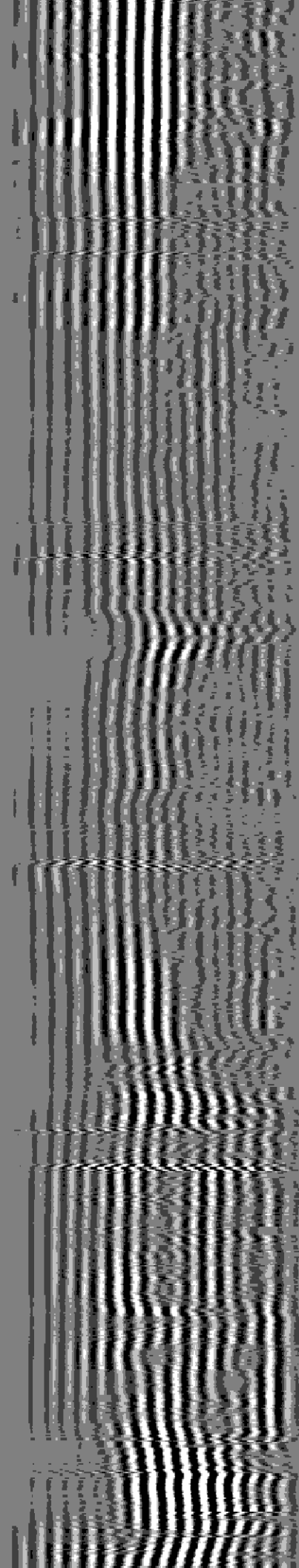
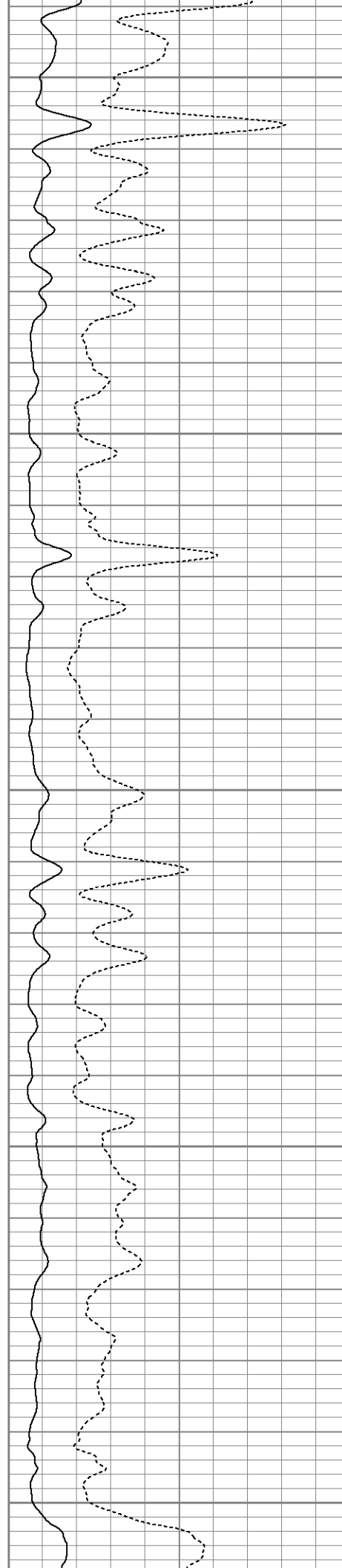
5650

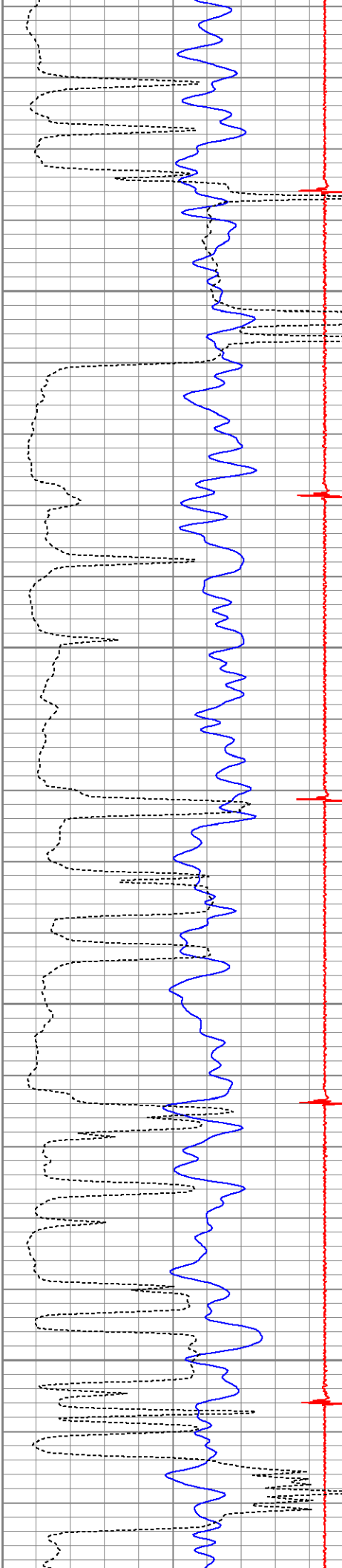
5700

5750

5800

5850



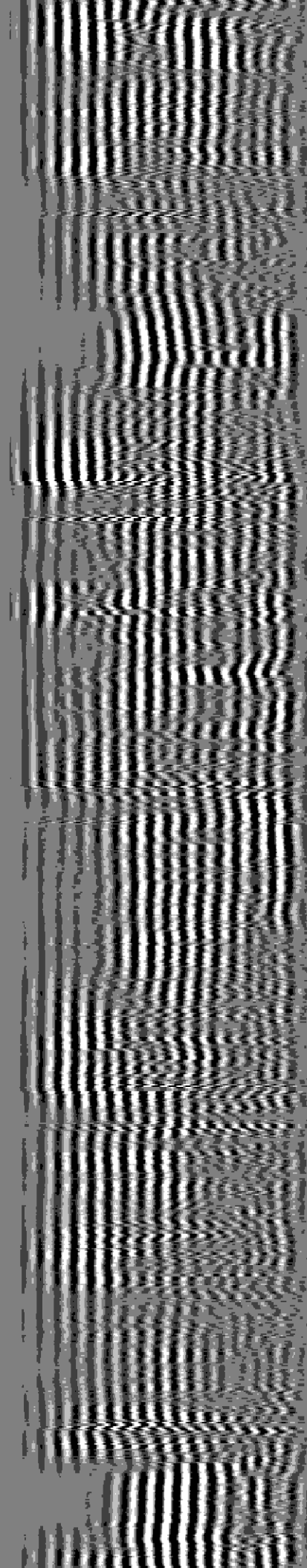
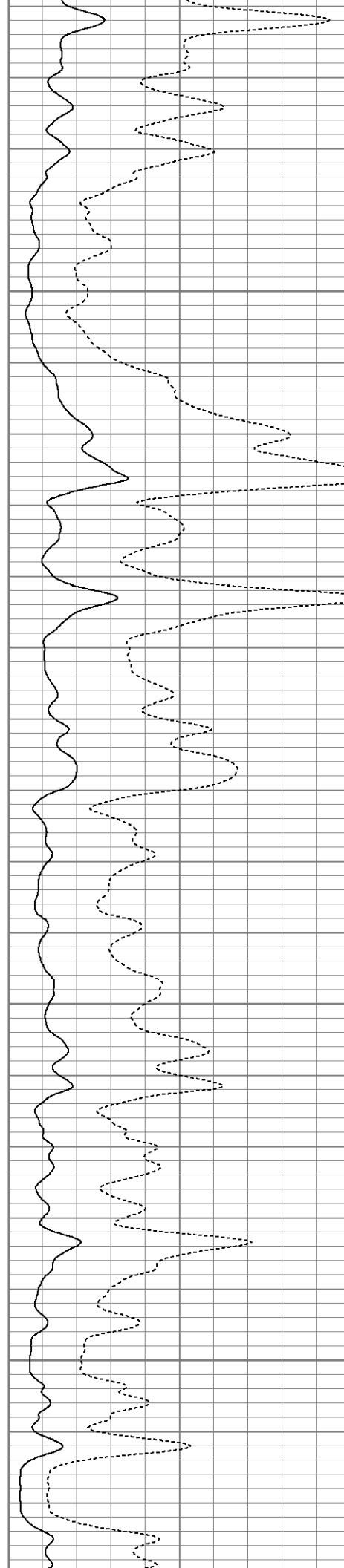


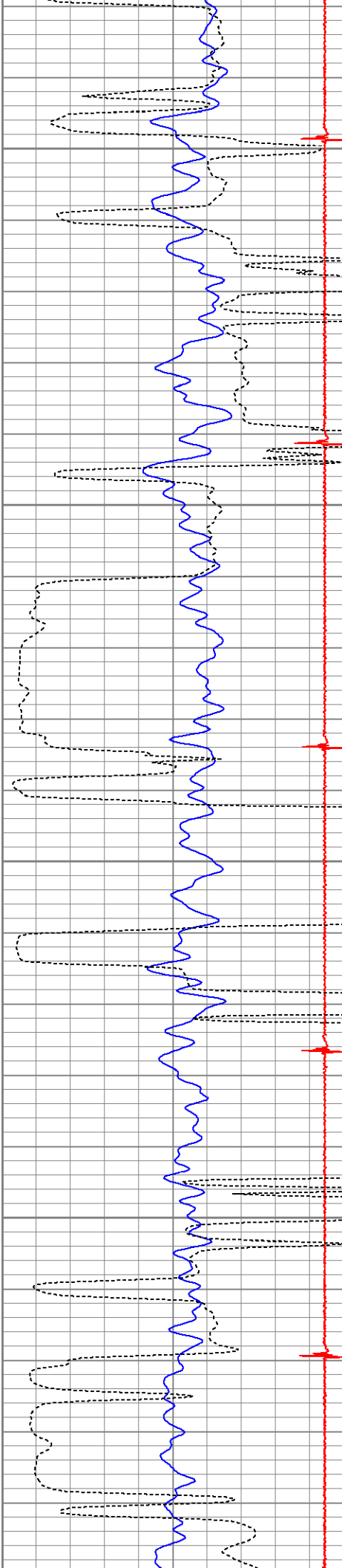
5900

5950

6000

6050



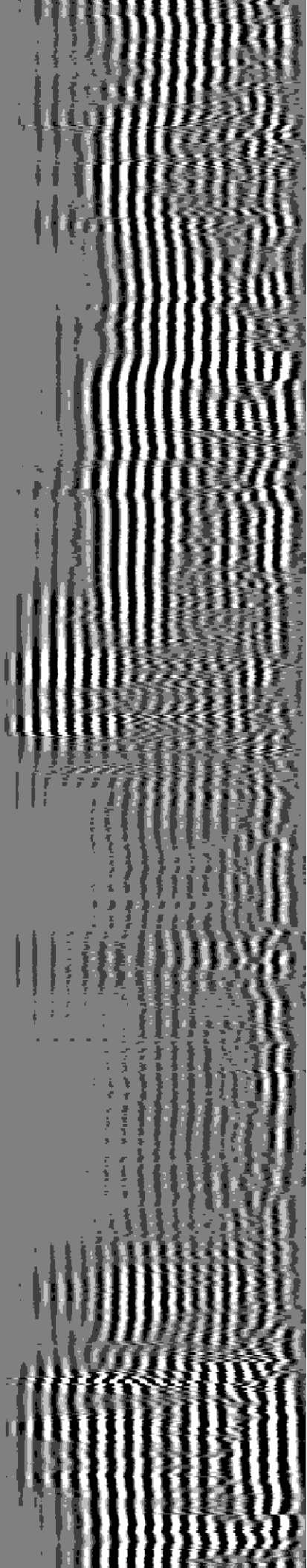
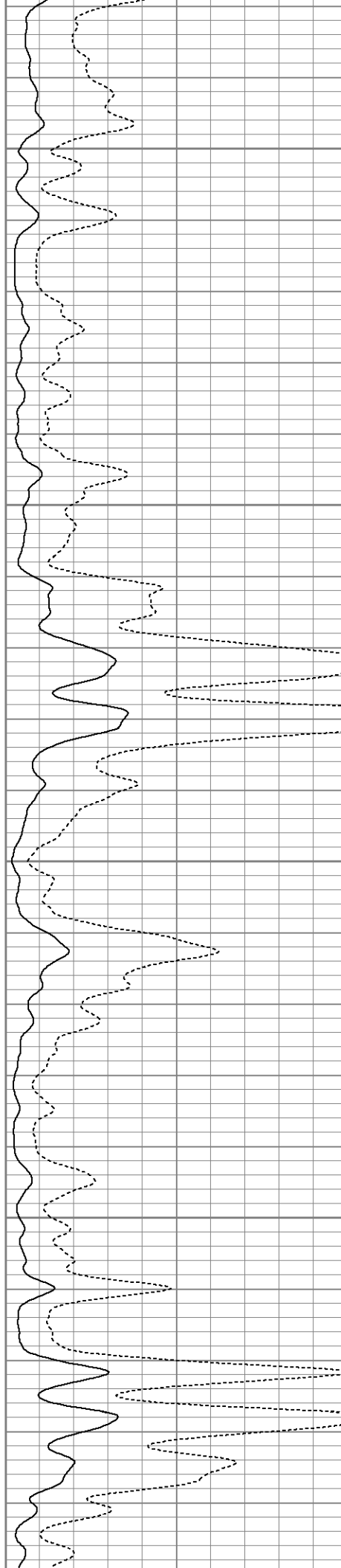


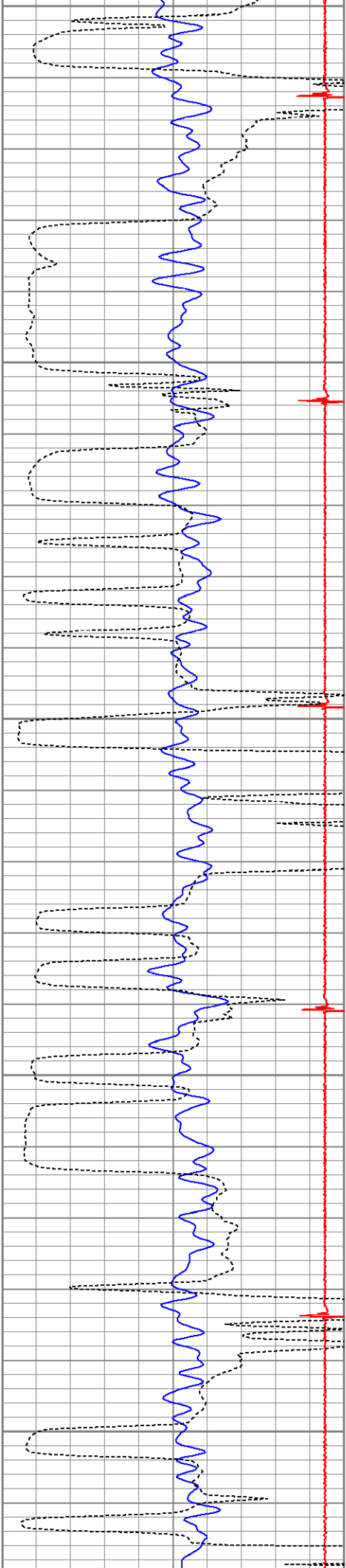
6100

6150

6200

6250





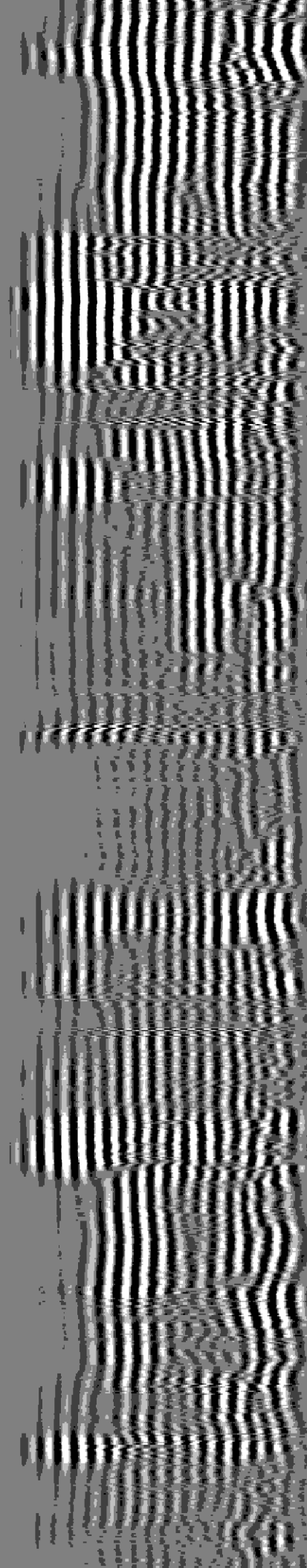
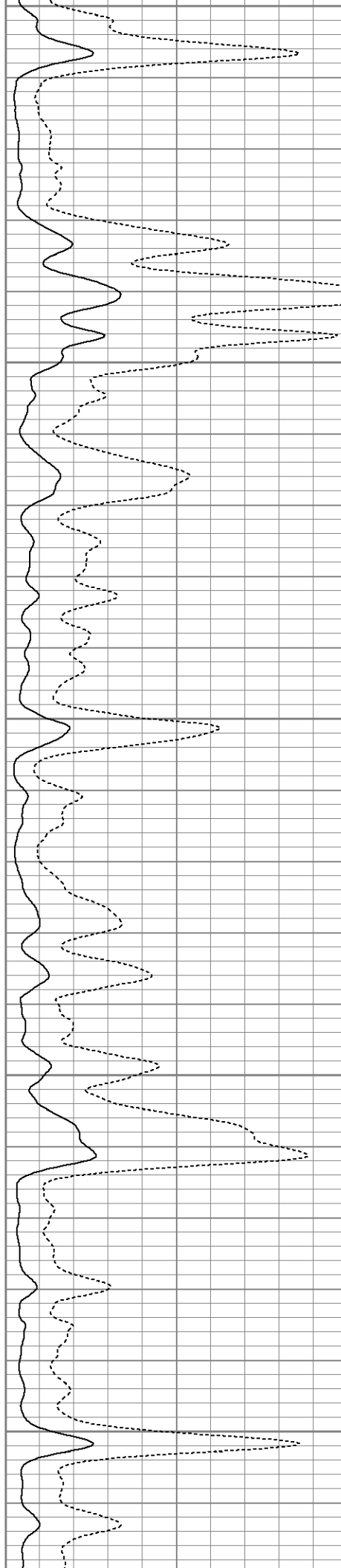
6300

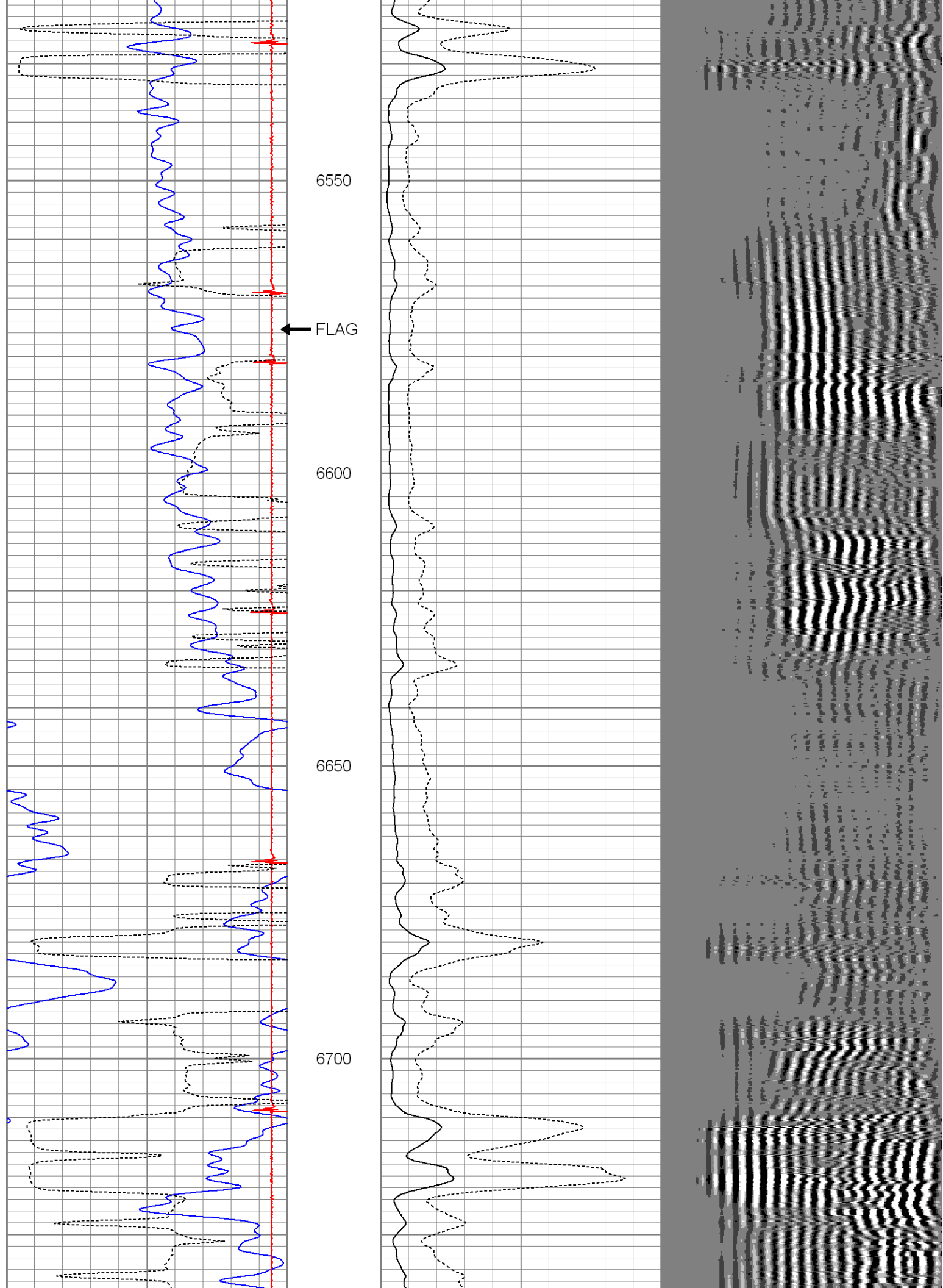
6350

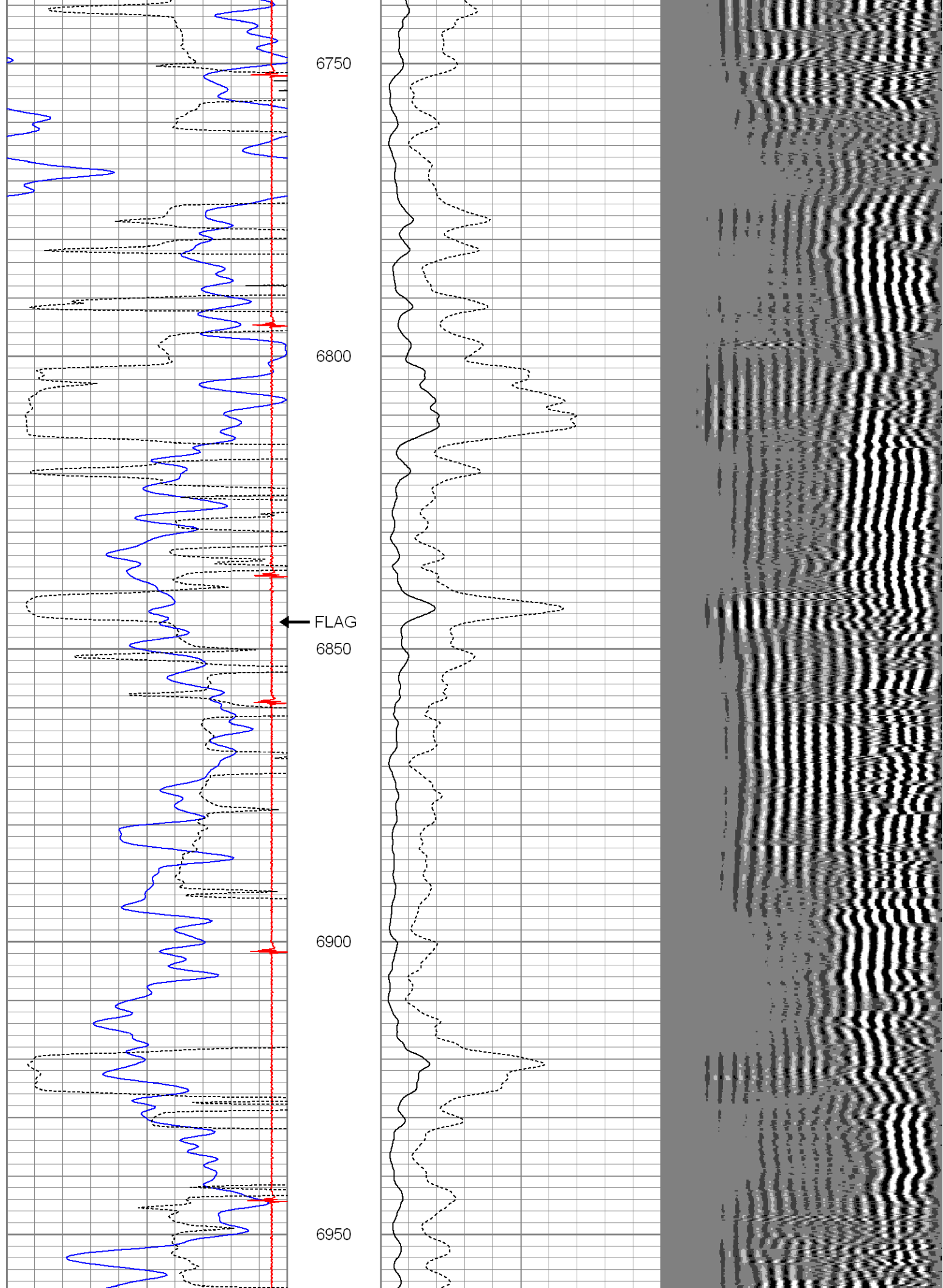
6400

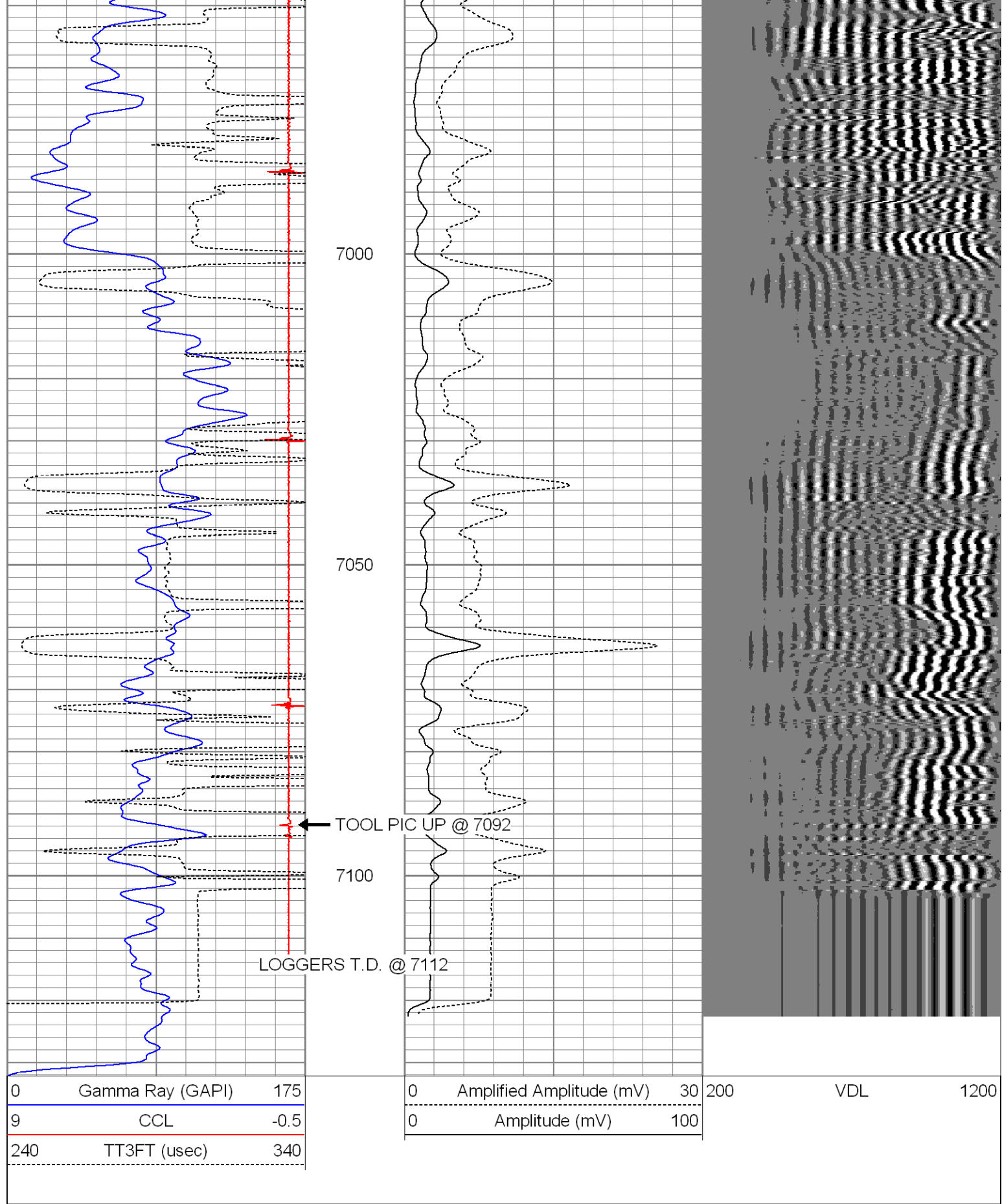
6450


6500









Sensor	Offset (ft)	Schematic	Description	Len (ft)	OD (in)	Wt (lb)
			CHD-STNDRD (1) Standard Cable Head	1.00	1.69	5.00

