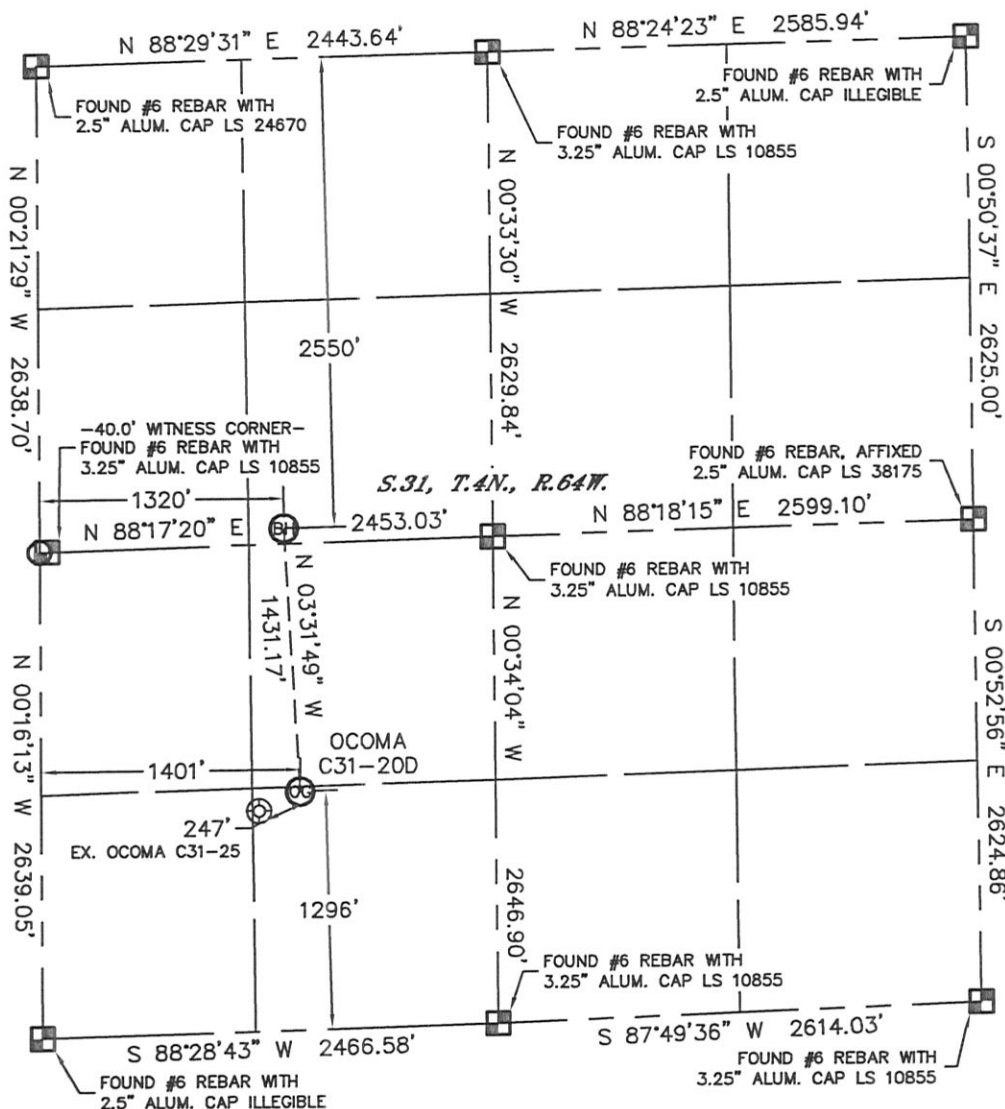


Lat40°, Inc. 1635 Foxtrail Drive, Suite 325 Loveland, CO 970-776-3321

WELL LOCATION CERTIFICATE

THIS MAP DOES NOT REPRESENT A BOUNDARY SURVEY

SECTION: 31
TOWNSHIP: 4N
RANGE: 64W



In accordance with a request from Brian DeRose with Noble Energy Inc. Lat40°, Inc. has determined the surface location of the OCOMA C31-20D to be 1296' from the SOUTH line and 1401' from the WEST line and the bottom hole to be 2550' from the NORTH line and 1320' from the WEST line as measured at right angles from the section lines of Section 31, Township 4 North, Range 64 West of the Sixth Principal Meridian, County of Weld, State of Colorado.

I hereby state that this Well Location Certificate was prepared by me, or under my direct supervision, that the fieldwork was completed on 6/23/11, for and on behalf of Noble Energy Inc. That this is not a Land Survey Plat or an Improvement Survey Plat, and that it is not to be relied upon for establishment of fence, building, or other future improvement lines.

NOTE:

- 1) Bearings shown are Grid Bearings of the Colorado State Plane Coordinate System, North Zone, North American Datum 1983/2007. The lineal dimensions as contained herein are based upon the "U.S. Survey Foot."
- 2) Ground elevations are based on an observed GPS elevation (NAVD 1988 DATUM).
- 3) NEAREST EXISTING WELL: OCOMA C31-25, 247'
- 4) IMPROVEMENTS: See LOCATION DRAWING for all visible improvements within 400' of disturbed area.
- 5) SURFACE USE: RANGELAND
- 6) INSTRUMENT OPERATOR: ADAM KELLY

SURFACE LOCATION
LATITUDE: 40.26510°N
LONGITUDE: 104.59740°W
PDOP: 1.7
ELEV: 4865'
1/4, 1/4: SE1/4SW1/4
NEAREST PROPERTY LINE: 26' NORTH

BOTTOM HOLE
LATITUDE: 40.26903°N
LONGITUDE: 104.59766°W

NOTE

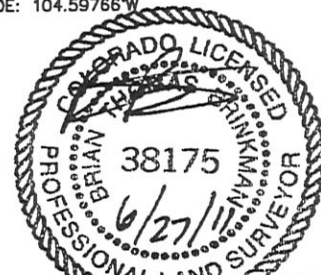
According to Colorado law, you must commence any legal action based upon any defect in this W.L.C. within three years after you discover such defect. In no event, may any action based upon any defect in this survey be commenced more than ten years after the date of the certificate shown hereon. (13-80-105 C.R.S.)

LEGEND

- = ALIQUOT MONUMENT AS DESCRIBED
- = CALCULATED POSITION

Brian T. Brinkman—On behalf of Lat40°, Inc.
Colorado Licensed Professional
Land Surveyor No. 38175

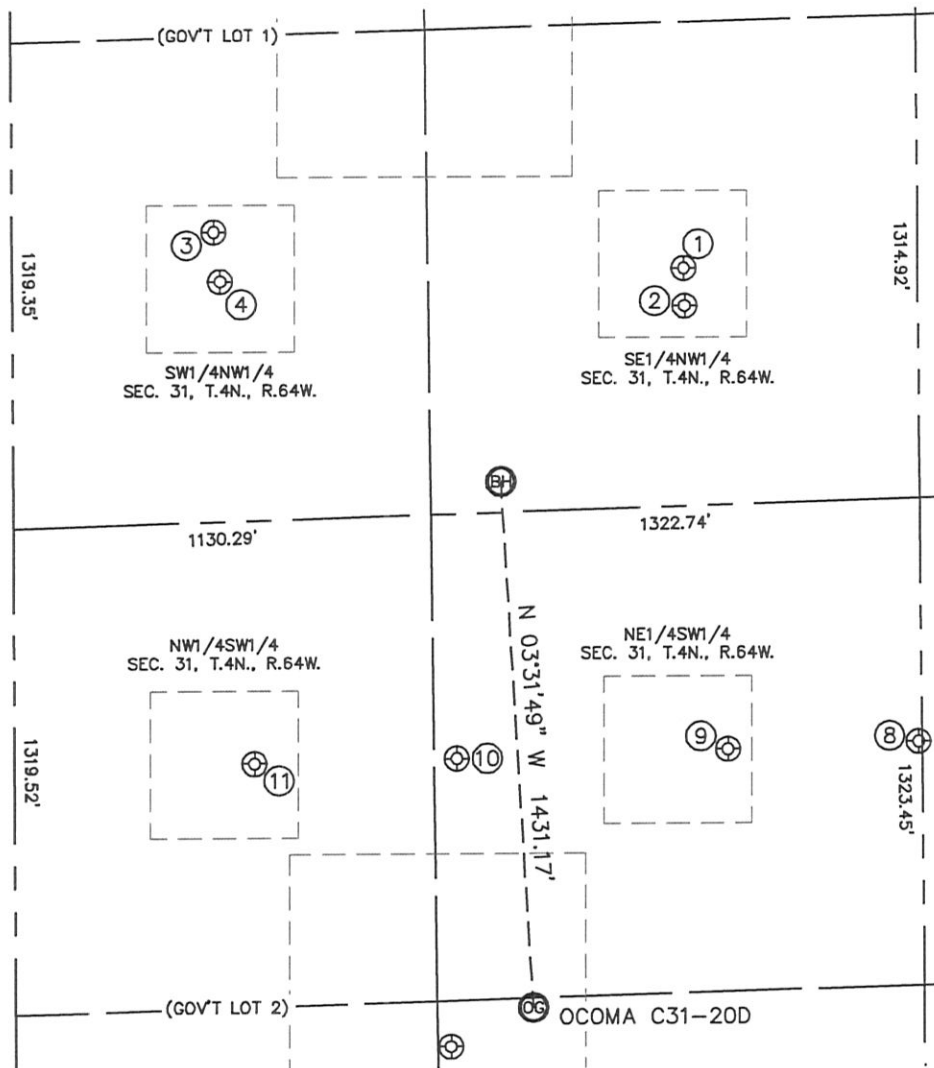
PROJECT#: 2011158



SITE SKETCH

OCOMA C31-20D

SECTION: 31
TOWNSHIP: 4N
RANGE: 64W



①

UPRC 31-6H
SE1/4NW1/4
1985' FNL
1817' FWL
LAT-40.27060°N
LONG-104.59587°W
PDOP:1.9
ELEV: 4880'

②

OCOMA 31-26
SE1/4NW1/4
2088' FNL
1819' FWL
LAT-40.27032°N
LONG-104.59586°W
PDOP:1.9
ELEV: 4880'

③

UPRC 31-5H
SW1/4NW1/4
1849' FNL
545' FWL
LAT-40.27092°N
LONG-104.60043°W
PDOP:1.8
ELEV: 4871'

④

OCOMA 31-25
SW1/4NW1/4
1984' FNL
562' FWL
LAT-40.27055°N
LONG-104.60037°W
PDOP:1.2
ELEV: 4869'

⑧

OCOMA 31-19
NE1/4SW1/4
1986' FSL
2446' FWL
LAT-40.26704°N
LONG-104.59364°W
PDOP:1.9
ELEV: 4875'

⑨

OCOMA-UPRR C31-11
NE1/4SW1/4
1981' FSL
1931' FWL
LAT-40.26701°N
LONG-104.59548°W
PDOP:2.8
ELEV: 4874'

⑩

OCOMA 31-18
NE1/4SW1/4
1978' FSL
1197' FWL
LAT-40.26697°N
LONG-104.59811°W
PDOP:1.2
ELEV: 4873'

⑪

OCOMA-UPRR C31-12
NW1/4SW1/4
1981' FSL
649' FWL
LAT-40.26695°N
LONG-104.60008°W
PDOP:1.8
ELEV: 4874'

