

GREAT WESTERN OIL & GAS COMPANY
Well Name: DILKA 22-6
SENW, Sect. 6, Twp 6N, Rng 63W
Weld County, CO
CURRENT WELLBORE SCHEMATIC as of May 3, 2011

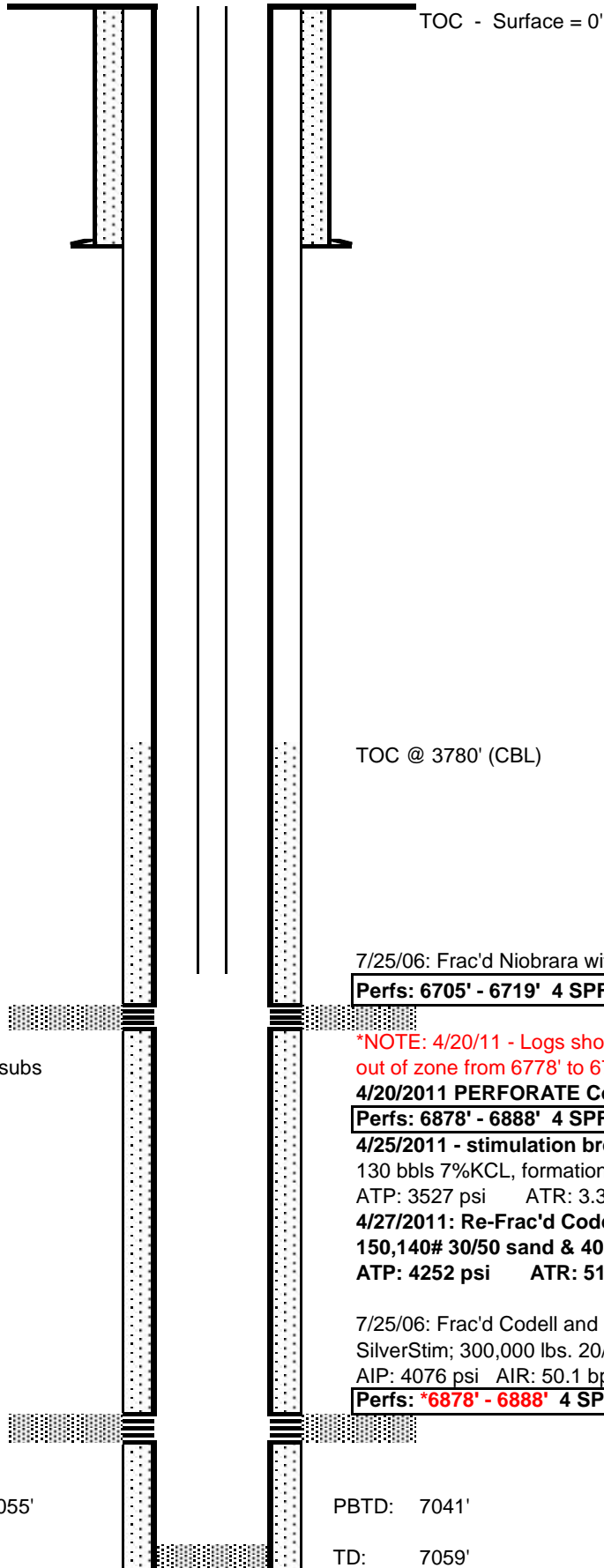
API: 05-123-23784-00

GL Elev: 4725'
KB Elev: 4735'

Spud: 7/8/2006

Surface Casing :

7/09/2006: 8-5/8" 24# set @ 495'
Cement w/ 350 sx. Cmt to surface



Tubing Detail:

5/03/2011: 2-3/8" 4.7# J-55 (221) jnts + 26' subs
landed at 6868' KB (= 10' above Codell)

Production Casing :

7/13/2006: 4-1/2" (165) jts + 1 sub; set @ 7055'
Cement w/ 250 sx

PBTD: 7041'

TD: 7059'