

1625 Broadway  
Suite 2000  
Denver, CO 80202

Tel: 303.228.4000  
Fax: 303.228.4280

www.nobleenergyinc.com



September 19, 2011

Colorado Oil and Gas Conservation Commission  
The Chancery Building  
1120 Lincoln Street, Suite 801  
Denver, CO 80203

Attn: Mr. David Neslin, Director

RE: WELLS RANCH AA26-67-1HN  
Niobrara New Drill  
Township 6 North, Range 63 West, 6th P.M.  
Section 25: NW/4NW/4: 1091' FNL & 147' FWL (Surface Location)  
Section 26: SE/4NE/4: 1555' FNL & 755' FEL (Beginning of Lateral)  
Section 26: SW/4NW/4: 1550' FNL & 535' FWL (Bottom Hole Location)  
Weld County, Colorado

Mr. Neslin:

Noble Energy, Inc. ("NEI") is planning to drill the captioned boundary well in accordance with the provisions of COGCC Rule 318A.e.

NEI's proposed wellbore spacing unit consists of the N/2 Section 26, T6N, R63W, creating a 320-acre wellbore spacing unit for the Niobrara formation. NEI is the only owner within the proposed wellbore spacing unit, therefore NEI hereby attests that no notice letters are required under COGCC Rule 318A(l).e.(6).

Enclosed are copies of the following documents to assist you in your review and approval of NEI's proposed APD for the captioned well:

- Map & plat illustrating proposed wellbore spacing unit.

Thank you for your attention to the enclosed. NEI respectfully requests that the COGCC review the enclosed information and approve the Application for Permit to Drill the captioned well.

Sincerely,

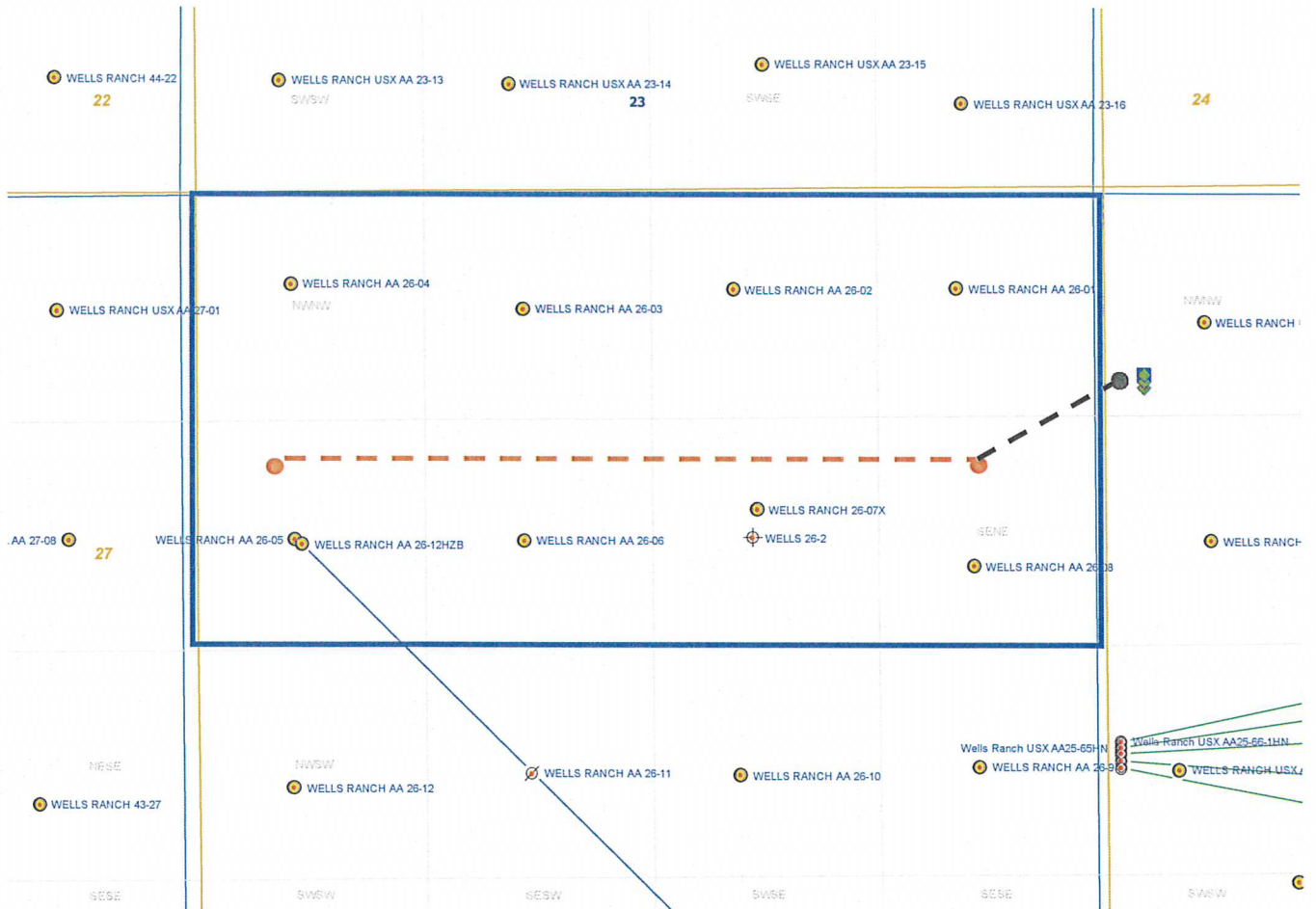
A handwritten signature in blue ink that reads 'Mari Clark'. The signature is fluid and cursive, with the first name 'Mari' and last name 'Clark' clearly distinguishable.

Mari Clark  
Regulatory Analyst II  
Noble Energy Inc.

# WELLS RANCH AA26-67-1HN

## Noble Energy, Inc

### N/2 Section 26, Township 6 North, Range 63 West



#### Legend



Proposed 160 acre spacing unit



Bottom Hole Location



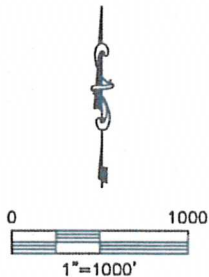
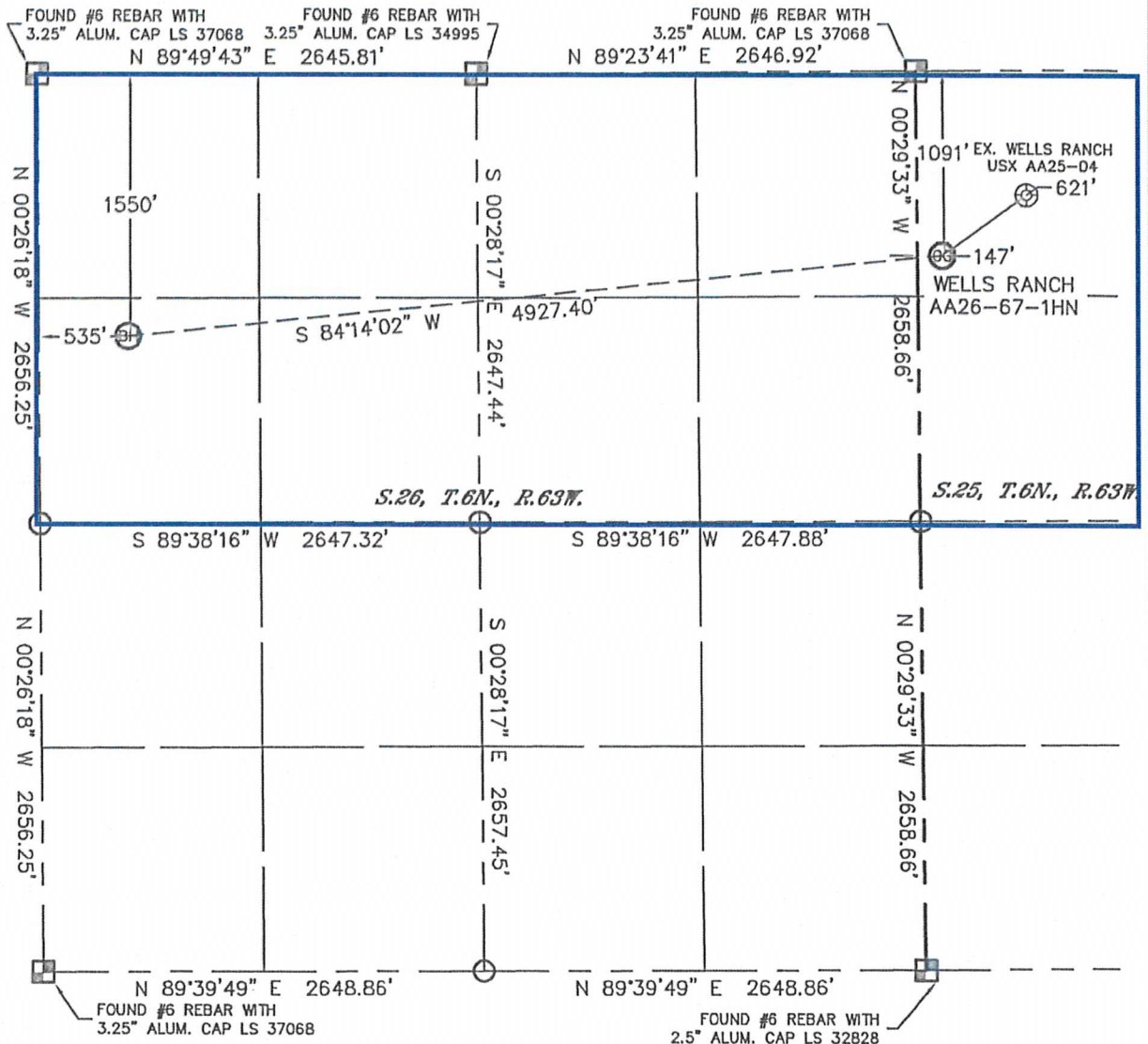


Lat40°, Inc. 1635 Foxtrail Drive, Suite 325 Loveland, CO 970-776-3321

# WELL LOCATION CERTIFICATE

THIS MAP DOES NOT REPRESENT A BOUNDARY SURVEY

SECTION: 25  
TOWNSHIP: 6N  
RANGE: 63W



**NOTE**  
According to Colorado law, you must commence any legal action based upon any defect in this W.L.C. within three years after you discover such defect. In no event, may any action based upon any defect in this survey be commenced more than ten years after the date of the certificate shown hereon. (13-80-105 C.R.S.)

**LEGEND**  
[Square with cross] = ALIQUOT MONUMENT AS DESCRIBED  
[Circle] = CALCULATED POSITION



Brian T. Brinkman—On Behalf of Lat40°, Inc.  
Colorado Licensed Professional  
Land Surveyor No. 38175  
SHEET 2/2

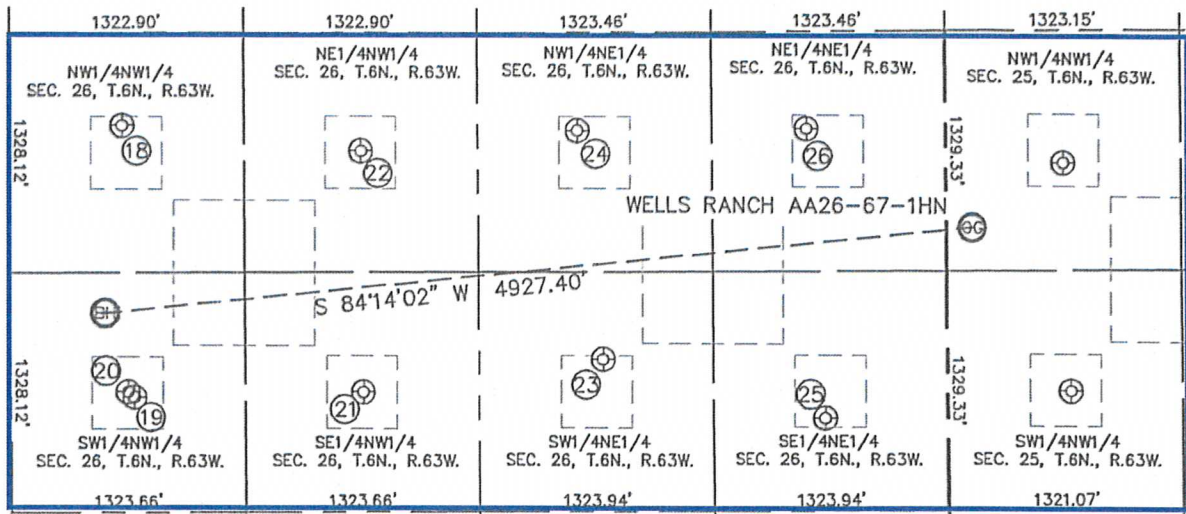
PROJECT#: 2011115

Lat40°, Inc. 1635 Foxtrail Drive, Suite 325 Loveland, CO 970-776-3321

## SITE SKETCH

WELLS RANCH AA26-67-1HN

SECTION: 25  
TOWNSHIP: 6N  
RANGE: 63W



18

WELLS RANCH  
AA26-04  
NW1/4NW1/4  
511' FNL  
634' FWL  
LAT-40.46340°N  
LONG-104.41135°W  
PDOP: 2.1  
ELEV: 4823'

19

WELLS RANCH  
AA26-12H2B  
SW1/4NW1/4  
2015' FNL  
697' FWL  
LAT-40.45928°N  
LONG-104.41114°W  
PDOP: 3.3  
ELEV: 4841'

20

WELLS RANCH  
AA26-05  
SW1/4NW1/4  
1985' FNL  
660' FWL  
LAT-40.45936°N  
LONG-104.41128°W  
PDOP: 3.5  
ELEV: 4838'

21

WELLS RANCH  
AA26-06  
SE/4NW1/4  
1987' FNL  
1992' FWL  
LAT-40.45932°N  
LONG-104.40649°W  
PDOP: 2.4  
ELEV: 4850'

22

WELLS RANCH  
AA26-03  
NE1/4NW1/4  
653' FNL  
1984' FWL  
LAT-40.46298°N  
LONG-104.40649°W  
PDOP: 2.0  
ELEV: 4837'

23

WELLS RANCH  
26-07X  
SW1/4NE1/4  
1808' FNL  
1947' FEL  
LAT-40.45979°N  
LONG-104.40162°W  
PDOP: 1.0  
ELEV: 4857'

24

WELLS RANCH  
AA26-02  
NW1/4NE1/4  
542' FNL  
2084' FEL  
LAT-40.46327°N  
LONG-104.40209°W  
PDOP: 1.2  
ELEV: 4843'

25

WELLS RANCH  
AA26-08  
SE1/4NE1/4  
2141' FNL  
691' FEL  
LAT-40.45887°N  
LONG-104.39711°W  
PDOP: 1.7  
ELEV: 4826'

26

WELLS RANCH  
AA26-01  
NE1/4NE1/4  
539' FNL  
784' FEL  
LAT-40.46327°N  
LONG-104.39742°W  
PDOP: 1.3  
ELEV: 4834'

