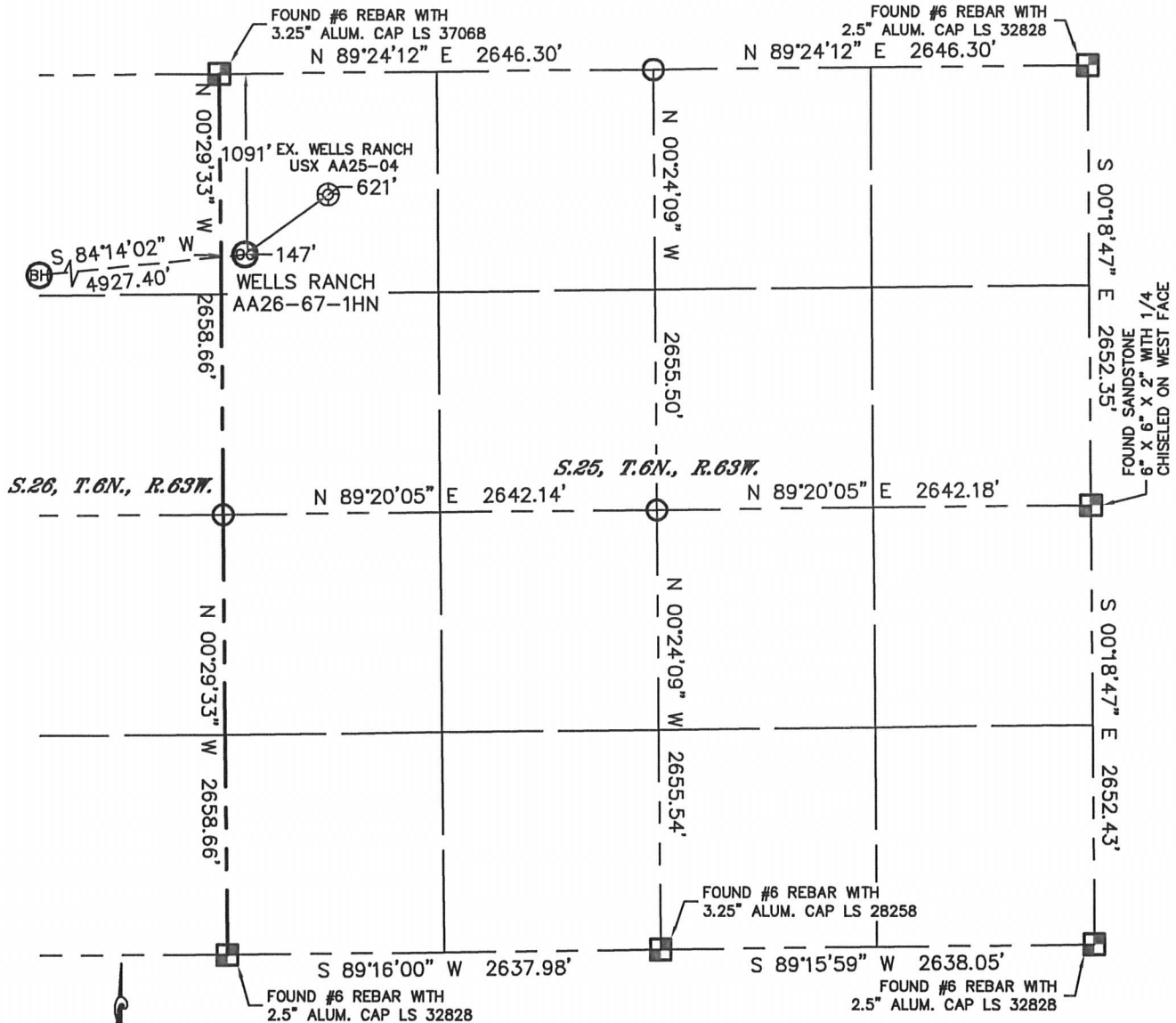


# WELL LOCATION CERTIFICATE

THIS MAP DOES NOT REPRESENT A BOUNDARY SURVEY

SECTION: 25  
TOWNSHIP: 6N  
RANGE: 63W



In accordance with a request from Sean Casper with Noble Energy Inc., Lat40°, Inc. has determined the surface location of the WELLS RANCH AA26-67-1HN to be 1091' from the NORTH line and 147' from the WEST line as measured at right angles from the section lines of Section 25, Township 6 North, Range 63 West and the bottom hole to be 1550' from the NORTH line and 535' from the WEST line as measured at right angles from the section lines of Section 25, Township 6 North, Range 63 West of the Sixth Principal Meridian, County of Weld, State of Colorado.

I hereby state that this Well Location Certificate was prepared by me, or under my direct supervision, that the fieldwork was completed on 7/12/11, for and on behalf of Noble Energy Inc. That this is not a Land Survey Plat or an Improvement Survey Plat, and that it is not to be relied upon for establishment of fence, building, or other future Improvement lines.

## NOTE:

- 1) Bearings shown are Grid Bearings of the Colorado State Plane Coordinate System, North Zone, North American Datum 1983/2007. The lineal dimensions as contained herein are based upon the "U.S. Survey Foot."
- 2) Ground elevations are based on an observed GPS elevation (NAVD 1988 DATUM).
- 3) NEAREST EXISTING WELL: WELLS RANCH USX AA25-04, 621'
- 4) IMPROVEMENTS: See LOCATION DRAWING for all visible Improvements within 400' of disturbed area.
- 5) SURFACE USE: RANGELAND
- 6) INSTRUMENT OPERATOR: ADAM KELLY

## NOTE

According to Colorado law, you must commence any legal action based upon any defect in this W.L.C. within three years after you discover such defect. In no event, may any action based upon any defect in this survey be commenced more than ten years after the date of the certificate shown hereon. (13-80-105 C.R.S.)

## LEGEND

- = ALIQUOT MONUMENT AS DESCRIBED
- = CALCULATED POSITION

SURFACE LOCATION  
LATITUDE: 40.46175°N  
LONGITUDE: 104.39408°W  
PDOP: 2.1  
ELEV: 4819'  
1/4, 1/4: NW1/4NW1/4  
NEAREST PROPERTY LINE: 147' WEST

BOTTOM HOLE  
LATITUDE: 40.46056°N  
LONGITUDE: 104.41172°W



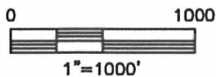
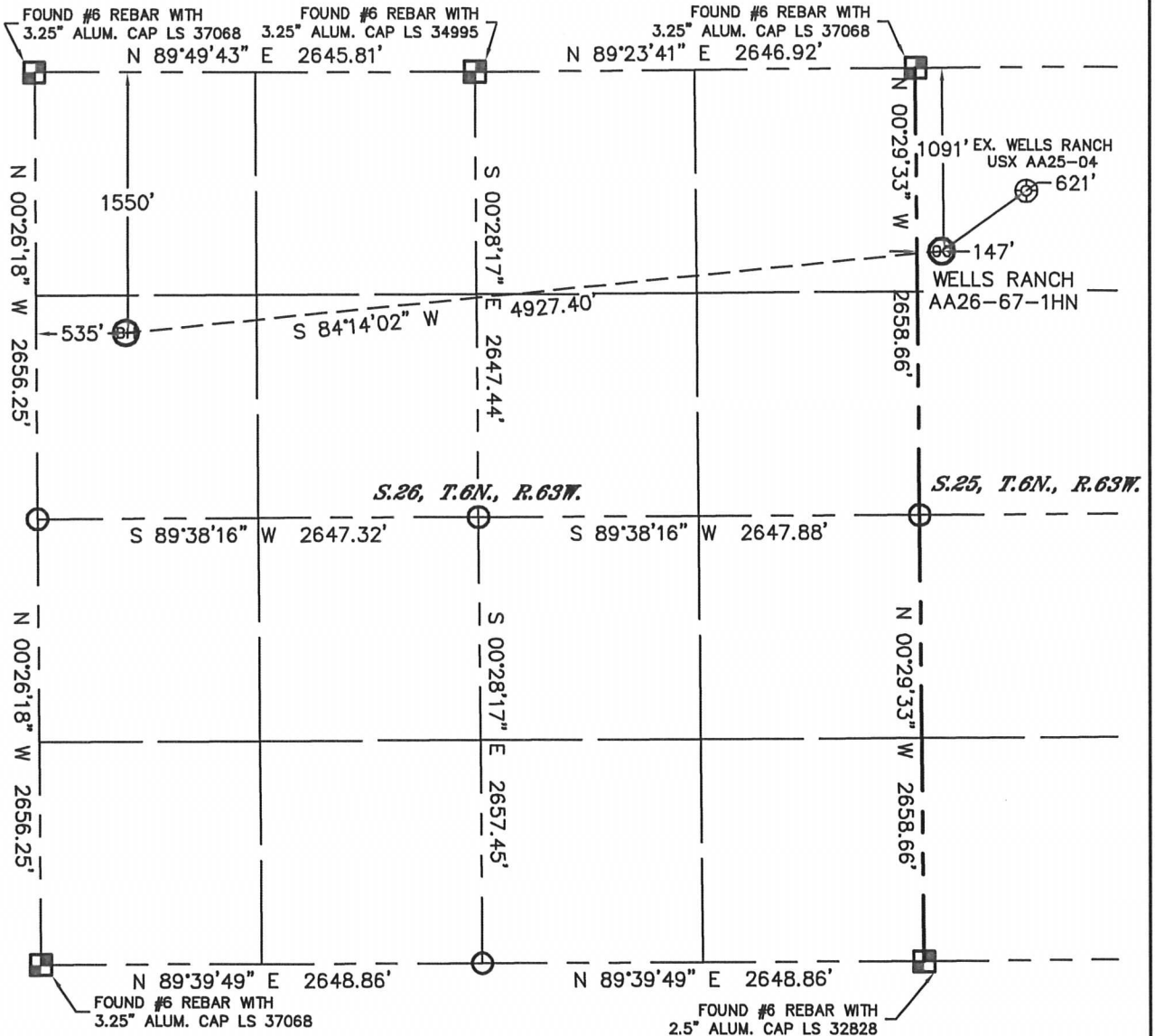
Brian T. Brinkman—On behalf of Lat40°, Inc.  
Colorado Licensed Professional  
Land Surveyor No. 38175  
SHEET 1/2

PROJECT#: 2011115

# WELL LOCATION CERTIFICATE

THIS MAP DOES NOT REPRESENT A BOUNDARY SURVEY



SECTION: 25  
TOWNSHIP: 6N  
RANGE: 63W

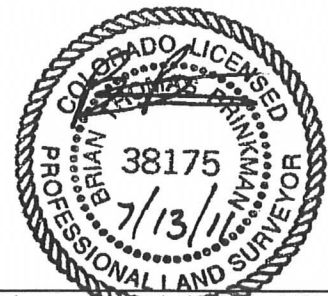


**NOTE**

According to Colorado law, you must commence any legal action based upon any defect in this W.L.C. within three years after you discover such defect. In no event, may any action based upon any defect in this survey be commenced more than ten years after the date of the certificate shown hereon. (13-80-105 C.R.S.)

**LEGEND**

-  = ALIQUOT MONUMENT AS DESCRIBED
-  = CALCULATED POSITION



Brian T. Brinkman—On behalf of Lat40°, Inc.  
Colorado Licensed Professional  
Land Surveyor No. 38175  
SHEET 2/2

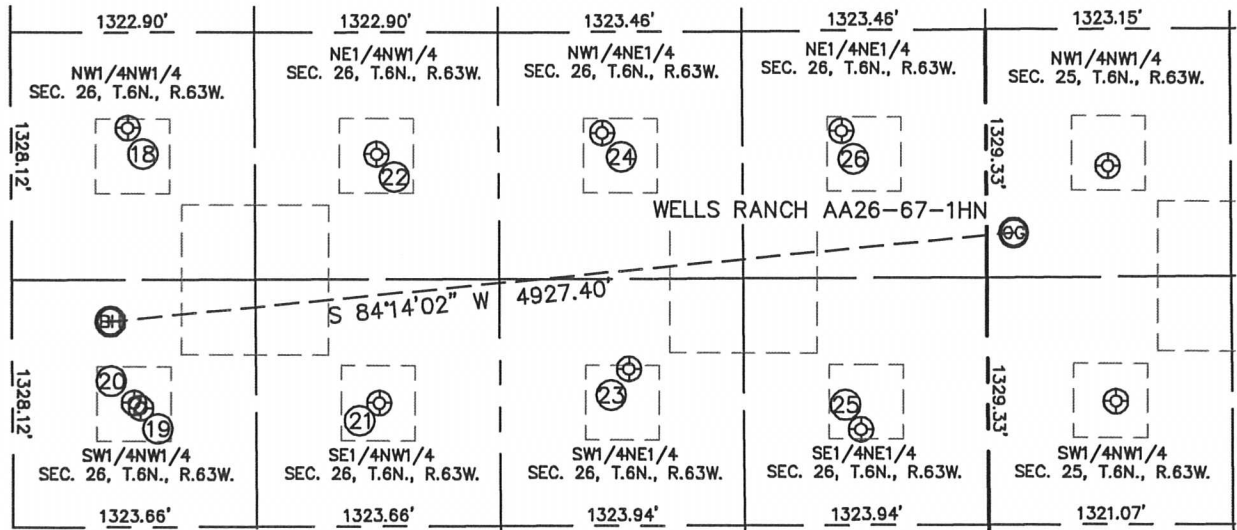
PROJECT#: 2011115

Lat40°, Inc. 1635 Foxtrail Drive, Suite 325 Loveland, CO 970-776-3321

# SITE SKETCH

## WELLS RANCH AA26-67-1HN

SECTION: 25  
TOWNSHIP: 6N  
RANGE: 63W



18

WELLS RANCH  
AA26-04  
NW1/4NW1/4  
511' FNL  
634' FWL  
LAT-40.46340°N  
LONG-104.41135°W  
PDOP: 2.1  
ELEV: 4823'

19

WELLS RANCH  
AA26-12HZB  
SW1/4NW1/4  
2015' FNL  
697' FWL  
LAT-40.45928°N  
LONG-104.41114°W  
PDOP: 3.3  
ELEV: 4841'

20

WELLS RANCH  
AA26-05  
SW1/4NW1/4  
1985' FNL  
660' FWL  
LAT-40.45936°N  
LONG-104.41128°W  
PDOP: 3.5  
ELEV: 4838'

21

WELLS RANCH  
AA26-06  
SE1/4NW1/4  
1987' FNL  
1992' FWL  
LAT-40.45932°N  
LONG-104.40649°W  
PDOP: 2.4  
ELEV: 4850'

22

WELLS RANCH  
AA26-03  
NE1/4NW1/4  
653' FNL  
1984' FWL  
LAT-40.46298°N  
LONG-104.40649°W  
PDOP: 2.0  
ELEV: 4837'

23

WELLS RANCH  
26-07X  
SW1/4NE1/4  
1808' FNL  
1947' FEL  
LAT-40.45979°N  
LONG-104.40162°W  
PDOP: 1.0  
ELEV: 4857'

24

WELLS RANCH  
AA26-02  
NW1/4NE1/4  
542' FNL  
2084' FEL  
LAT-40.46327°N  
LONG-104.40209°W  
PDOP: 1.2  
ELEV: 4843'

25

WELLS RANCH  
AA26-08  
SE1/4NE1/4  
2141' FNL  
691' FEL  
LAT-40.45887°N  
LONG-104.39711°W  
PDOP: 1.7  
ELEV: 4826'

26

WELLS RANCH  
AA26-01  
NE1/4NE1/4  
539' FNL  
784' FEL  
LAT-40.46327°N  
LONG-104.39742°W  
PDOP: 1.3  
ELEV: 4834'

