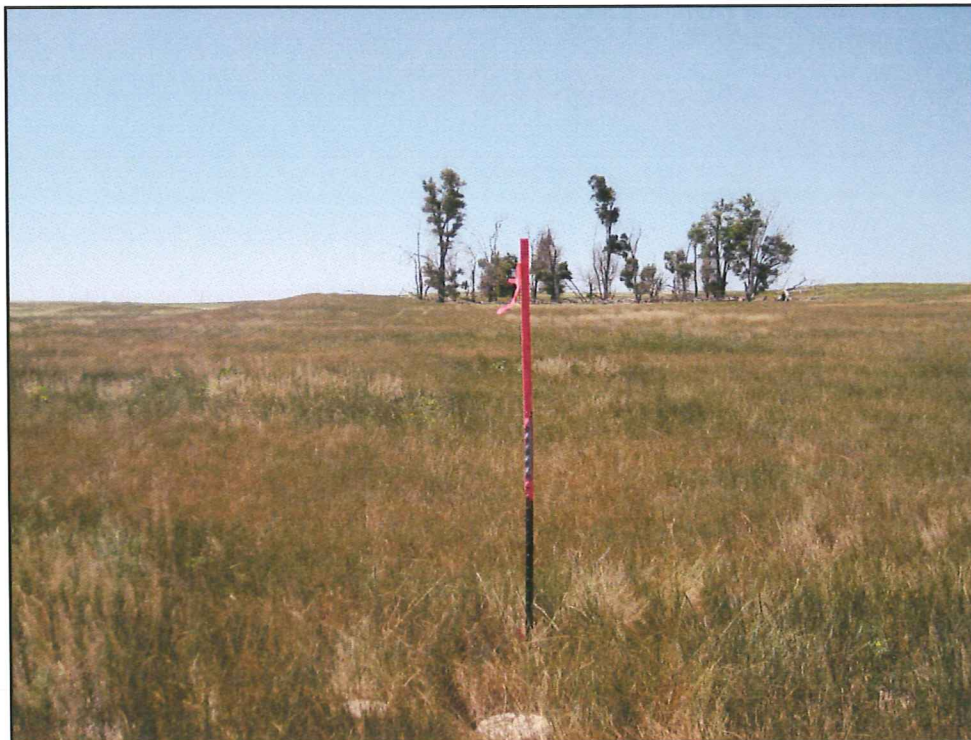


STULTS 32-4
TOWNSHIP 1 SOUTH, RANGE 45 WEST
SECTION 4: SW1/4 NE1/4
YUMA COUNTY, COLORADO

WELL FACING NORTH
PICTURE DATED: 7/20/2011

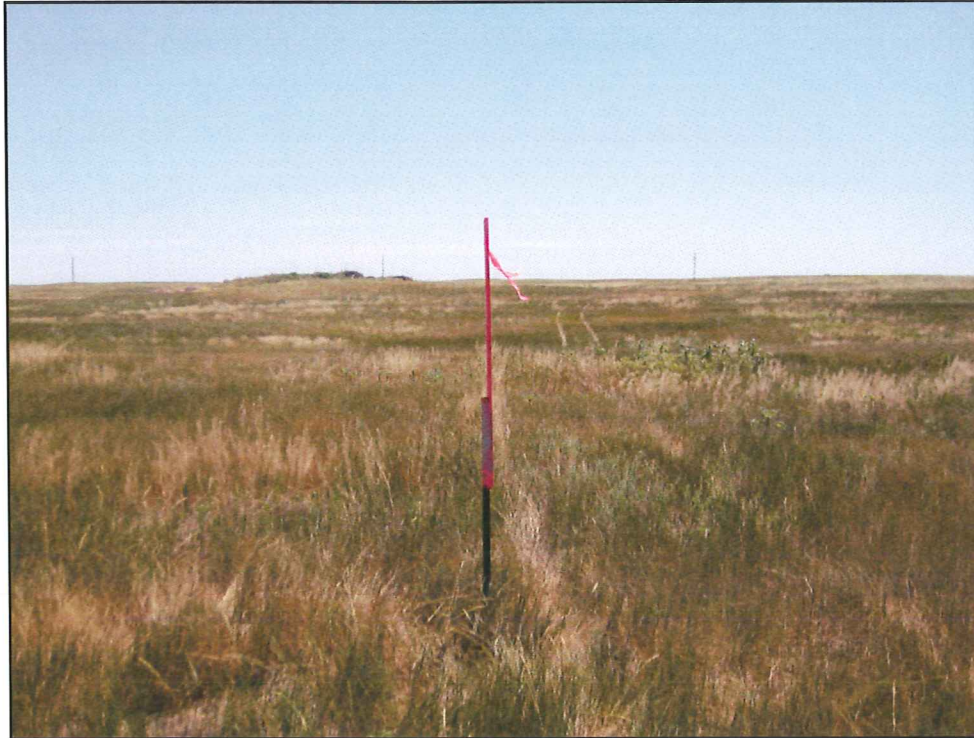


WELL FACING SOUTH
PICTURE DATED: 7/20/2011



STULTS 32-4
TOWNSHIP 1 SOUTH, RANGE 45 WEST
SECTION 4: SW1/4 NE1/4
YUMA COUNTY, COLORADO

WELL FACING EAST
PICTURE DATED: 7/20/2011



WELL FACING WEST
PICTURE DATED: 7/20/2011

