


The Road to Excellence Starts with Safety

Sold To #: 352220		Ship To #: 2848009		Quote #:		Sales Order #: 8095199	
Customer: COMET RIDGE USA INC				Customer Rep:			
Well Name: Triggefish			Well #: 22-31		API/UWI #:		
Field: VERMEJO RANCH		City (SAP): FLORENCE		County/Parish: Fremont		State: Colorado	
Contractor: PENSE			Rig/Platform Name/Num: ?				
Job Purpose: Cement Surface Casing							
Well Type: Development Well				Job Type: Cement Surface Casing			
Sales Person: FLING, MATTHEW			Srcv Supervisor: SANFORD, DALE		MBU ID Emp #: 219527		
Job Personnel							
HES Emp Name		Exp Hrs	Emp #	HES Emp Name		Exp Hrs	Emp #
BANUELOS, GUADALUPE		3	372277	BULINSKI, MATTHEW J		3	483865
SANFORD, DALE A		3	219527				
FANTASIA, JOSEPH Brandon		3	485445				
Equipment							
HES Unit #	Distance-1 way	HES Unit #	Distance-1 way	HES Unit #	Distance-1 way	HES Unit #	Distance-1 way
10248053C	148 mile	11036295	148 mile	11398490	148 mile	11518550	148 mile
Job Hours							
Date	On Location Hours	Operating Hours	Date	On Location Hours	Operating Hours	Date	On Location Hours
4-11-11	3	1					
TOTAL			Total is the sum of each column separately				
Job				Job Times			
Formation Name				Date			
Formation Depth (MD) Top				Time			
Bottom				Time Zone			
Form Type				Called Out			
BHST				11 - Apr - 2011			
Job depth MD				On Location			
673. ft				11 - Apr - 2011			
Job Depth TVD				Job Started			
673. ft				11 - Apr - 2011			
Water Depth				Job Completed			
Wk Ht Above Floor				11 - Apr - 2011			
Perforation Depth (MD) From				Job Completed			
To				11 - Apr - 2011			
Departed Loc				11 - Apr - 2011			
Well Data				Well Data			
Description	New / Used	Max pressure psig	Size in	ID in	Weight lbm/ft	Thread	Grade
Open Hole				12.25			
Surface Casing	Unknown		8.625	8.097	24.		J-55
Tools and Accessories				Tools and Accessories			
Type	Size	Qty	Make	Depth	Type	Size	Qty
Guide Shoe					Packer		
Float Shoe					Bridge Plug		
Float Collar					Retainer		
Insert Float							
Stage Tool							
Miscellaneous Materials				Miscellaneous Materials			
Gelling Agt	Conc		Surfactant	Conc	Acid Type	Qty	Conc
Treatment Fld	Conc		Inhibitor	Conc	Sand Type	Size	Qty
Fluid Data				Fluid Data			
Stage/Plug #: 1				Stage/Plug #: 1			
Fluid #	Stage Type	Fluid Name	Qty	Qty uom	Mixing Density lbm/gal	Yield ft3/sk	Mix Fluid Gal/sk

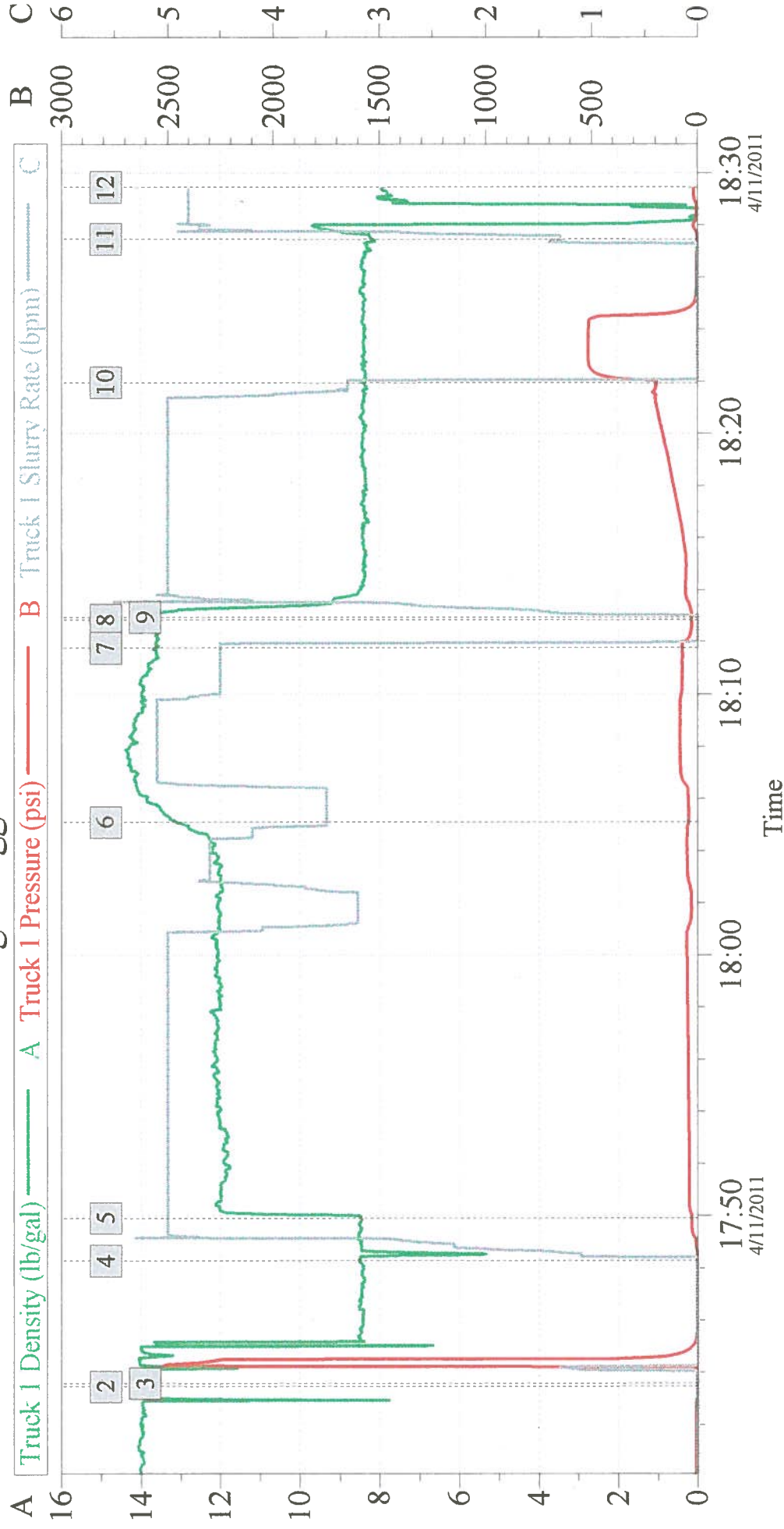
Stage/Plug #: 1										
Fluid #	Stage Type	Fluid Name	Qty	Qty uom	Mixing Density lbm/gal	Yield ft ³ /sk	Mix Fluid Gal/sk	Rate bbl/min	Total Mix Fluid Gal/sk	
1	Water Spacer		5.00	bbl	8.34	.0	.0	4.0		
2	Trinidad Surface Blend 12#	TRINIDAD SURFACE BLEND - SBM (137081)	150.0	sacks	12.	2.62	14.52	5.0	14.52	
	0.125 lbm	POLY-E-FLAKE (101216940)								
	5 lbm	KOL-SEAL, 50 LB BAG (100064232)								
	14.52 Gal	FRESH WATER								
3	Trinidad Surface Blend 14#	TRINIDAD SURFACE BLEND - SBM (137081)	100.0	sacks	14.	1.67	7.93		7.93	
	0.125 lbm	POLY-E-FLAKE (101216940)								
	5 lbm	KOL-SEAL, 50 LB BAG (100064232)								
	7.93 Gal	FRESH WATER								
4	Premium 15.8#	CMT - PREMIUM - CLASS G, 94 LB SK (100003685)		sacks	15.8	1.17	5.02		5.02	
	94 lbm	CMT - PREMIUM - CLASS G REG OR TYPE V, BULK (100003685)								
	2 %	CALCIUM CHLORIDE, PELLET, 50 LB (101509387)								
	5.02 Gal	FRESH WATER								
Calculated Values		Pressures		Volumes						
Displacement		Shut In: Instant	200	Lost Returns	no	Cement Slurry		Pad		
Top Of Cement	surf	5 Min		Cement Returns	30	Actual Displacement		Treatment		
Frac Gradient		15 Min		Spacers	5	Load and Breakdown		Total Job		
Rates										
Circulating		Mixing		Displacement		Avg. Job				
Cement Left In Pipe	Amount	20 ft	Reason	Shoe Joint						
Frac Ring # 1 @	ID	Frac ring # 2 @	ID	Frac Ring # 3 @	ID	Frac Ring # 4 @	ID			
The Information Stated Herein Is Correct				Customer Representative Signature 						

The Road to Excellence Starts with Safety

Sold To #: 352220	Ship To #: 2848009	Quote #:	Sales Order #: 8095199
Customer: COMET RIDGE USA INC	Customer Rep:		
Well Name: Triggefish	Well #: 22-31	API/UWI #:	
Field: VERMEJO RANCH	City (SAP): FLORENCE	County/Parish: Fremont	State: Colorado
Legal Description:			
Lat:		Long:	
Contractor: PENSE	Rig/Platform Name/Num: ?		
Job Purpose: Cement Surface Casing	Ticket Amount:		
Well Type: Development Well	Job Type: Cement Surface Casing		
Sales Person: FLING, MATTHEW	Srv Supervisor: SANFORD, DALE	MBU ID Emp #: 219527	

Activity Description	Date/Time	Cht #	Rate bbl/min	Volume bbl		Pressure psig		Comments
				Stage	Total	Tubing	Casing	
Test Lines	04/11/2011 17:43					1500.0		
Pump Spacer 1	04/11/2011 17:48		3	5			50.0	Water
Pump Lead Cement	04/11/2011 17:49		5	69			75.0	150 Sks Cmt @ 12#
Pump Tail Cement	04/11/2011 18:05		5	29			90.0	100 Sks cmt @ 14#
Drop Top Plug	04/11/2011 18:12							
Pump Displacement	04/11/2011 18:12		5	41.2			250.0	Water
Bump Plug	04/11/2011 18:21						500.0	30 Bbl Good Cement to pit
Check Floats	04/11/2011 18:27						550.0	

Comet Ridge Triggerfish 22-31 Surface



Global Event Log

1	Starting Job	17:36:33	2	Start Job	17:43:27	3	Test Lines	17:43:34
4	Pump Spacer 1	17:48:17	5	Pump Lead Cement	17:49:55	6	Pump Tail Cement	18:05:06
7	Shutdown	18:11:46	8	Drop Plug	18:12:51	9	Pump Displacement	18:12:57
10	Bump Plug	18:21:57	11	End Job	18:27:27	12	Ending Job	18:29:26

Customer:

Job Date: 11-Apr-2011

Sales Order #: 8095199

Well Description:

UWI: