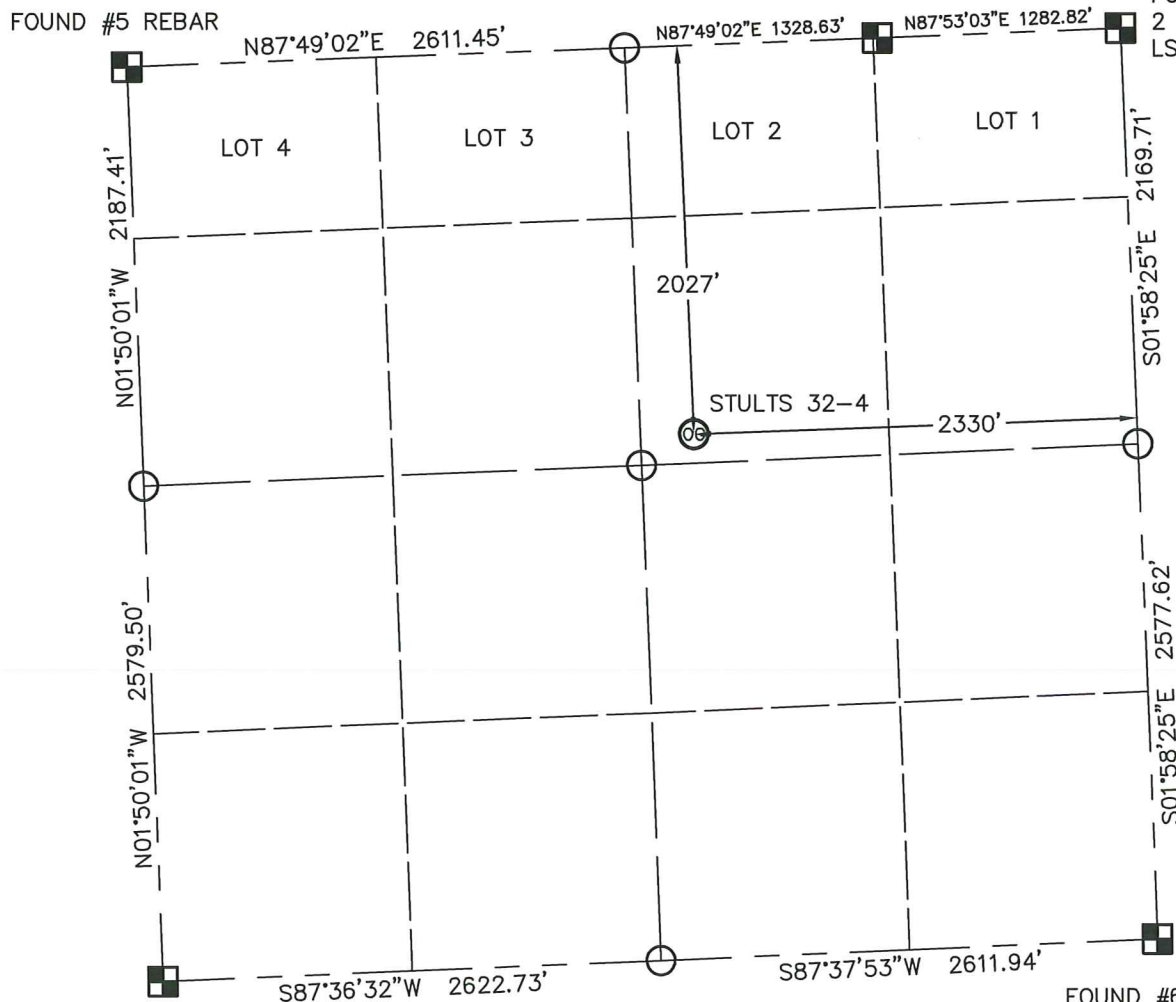


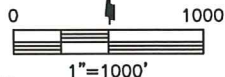
## WELL LOCATION CERTIFICATE

STULTS 32-4

THIS MAP DOES NOT REPRESENT A BOUNDARY SURVEY

SECTION: 4  
TOWNSHIP: 1S  
RANGE: 45WFOUND #6 REBAR WITH  
2 1/2" ALUMINUM CAP  
LS 19583, 1993FOUND #6 REBAR WITH  
2 1/2" ALUMINUM CAP  
LS 26964, 2003FOUND #6 REBAR WITH  
2" ALUMINUM CAP  
LS 23524, 2006FOUND #6 REBAR WITH  
2 1/2" ALUMINUM CAP  
LS 26964, 2003In accordance with a request from DAVID LEDET with NOBLE ENERGY INC.King Surveyors Inc. has determined the surface location of STULTS 32-4 to be 2027' from the NORTH line and 2330' from the EAST line, as measured at right angles, from the section lines of Section 4, Township 1 South, Range 45 West of the Sixth Principal Meridian, County of Yuma, State of Colorado.I hereby state that this Well Location Certificate was prepared by me, or under my direct supervision, that the fieldwork was completed on 7-20-2011, for and on behalf of NOBLE ENERGY INC. That this is not a Land Survey Plat or an Improvement Survey Plat, and that it is not to be relied upon for establishment of fence, building, or other future improvement lines.

## SURFACE LOCATION

LATITUDE: 39.99742°N  
LONGITUDE: 102.42007°W  
PDOP: 1.5  
ELEV: 3824'  
1/4, 1/4: SW1/4 NE1/4  
NEAREST PROPERTY LINE: 2027' NORTH




## NOTE:

- 1) Bearings shown are Grid Bearings of the Colorado State Plane Coordinate System, North Zone, North American Datum 1983/2007. The lineal dimensions as contained herein are based upon the "U.S. Survey Foot."
- 2) Ground elevations are based on an observed GPS elevation (NAVD 1988 DATUM).
- 3) IMPROVEMENTS: See LOCATION DRAWING exhibit for all visible improvements within 400' of disturbed area.
- 4) SURFACE USE: PASTURE
- 5) OPERATOR: BEN ADSIT

## NOTE

According to Colorado law, you must commence any legal action based upon any defect in this W.L.C. within three years after you discover such defect. In no event, may any action based upon any defect in this survey be commenced more than ten years after the date of the certificate shown hereon. (13-80-105 C.R.S.)

## LEGEND

-  = FOUND ALIQUOT MONUMENT AS DESCRIBED
-  = CALCULATED POSITION (WITHOUT NOTES FOR COURT ORDERED RESURVEY)
-  = SET ALIQUOT MONUMENT AS DESCRIBED

Michael Chad Dilka - On Behalf Of King Surveyors, Inc.  
Colorado Licensed Professional Land Surveyor #38106  
PROJECT#: 2011299