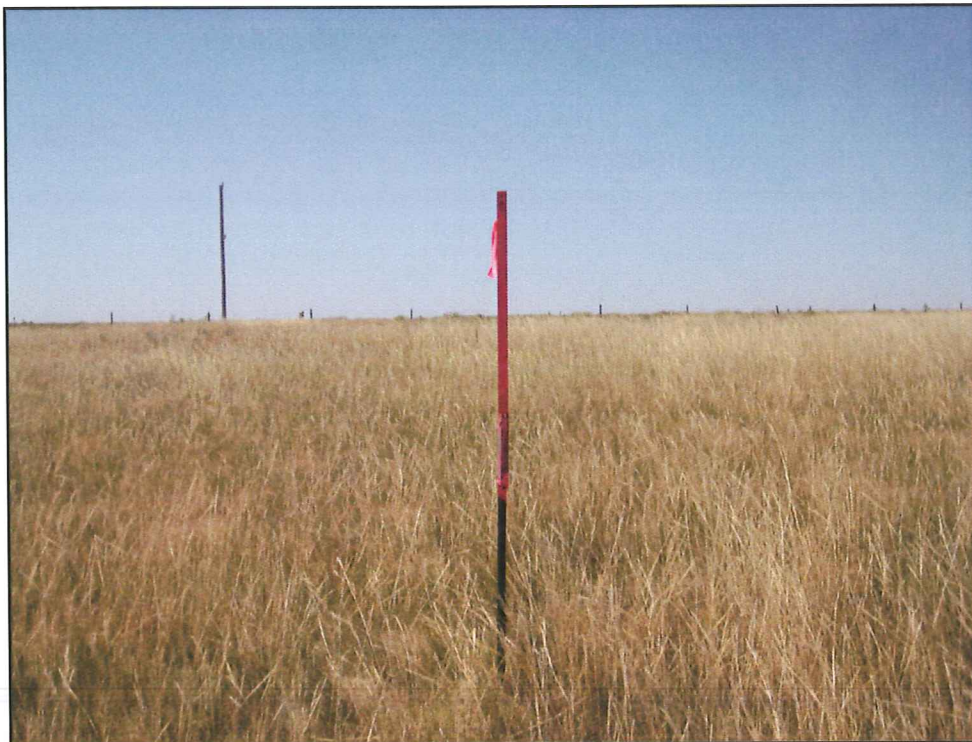


STULTS 24-4B
TOWNSHIP 1 SOUTH, RANGE 45 WEST
SECTION 4: SE1/4 SW1/4
YUMA COUNTY, COLORADO

WELL FACING NORTH
PICTURE DATED: 7/20/2011



WELL FACING SOUTH
PICTURE DATED: 7/20/2011



STULTS 24-4B
TOWNSHIP 1 SOUTH, RANGE 45 WEST
SECTION 4: SE1/4SW1/4
YUMA COUNTY, COLORADO

WELL FACING EAST
PICTURE DATED: 7/20/2011



WELL FACING WEST
PICTURE DATED: 7/20/2011

