

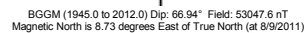
Location:	COLORADO	Slot:	SLOT#06 FRICO 1-15HZ (714'FSL & 656'FWL, SEC.15)
Field:	WELD COUNTY (KERR MCGEE)	Well:	FRICO 1-15HZ
Facility:	SEC.15-T3N-R65W	Wellbore:	FRICO 1-15HZ ST#1 PWB

Well Profile Data								
Design Comment	MD (ft)	Inc (°)	Az (°)	TVD (ft)	Local N (ft)	Local E (ft)	DLS (°/100ft)	VS (ft)
Tie On	6096.00	12.100	202.900	6044.32	-566.24	123.67	0.00	-281.73
End of 3D Arc	6150.00	10.113	203.502	6097.30	-575.80	119.58	3.69	-291.12
End of 3D Arc (J)	7342.53	89.860	43.235	6897.07	-115.89	617.95	8.33	386.86
End of Tangent (J)	12646.95	89.860	43.235	6910.00	3748.62	4251.43	0.00	5668.05

Facility Name			Grid East (US ft)	Grid North (US ft)	Latitude	Longitude
SEC.15-T3N-R65W			3235225.189	1326473.350	40°13'35.400"N	104°39'27.216"W
Slot	Local N (ft)	Local E (ft)	Grid East (US ft)	Grid North (US ft)	Latitude	Longitude
SLOT#06 FRICO 1-15HZ (714°FSL & 656°FWL,SEC.15)	-2322.01	151.89	3235399.121	1324152.989	40°13'12.454"N	104°39'25.258"W
XTREME 8 (RKB) to Mud line (At Slot: SLOT#06 FRICO 1-15HZ (714°FSL & 656°FWL,SEC.15))					4812ft	
Mean Sea Level to Mud line (At Slot: SLOT#06 FRICO 1-15HZ (714°FSL & 656°FWL,SEC.15))					0ft	
XTREME 8 (RKB) to Mean Sea Level					4812ft	

Name	MD (ft)	TVD (ft)	Local N (ft)	Local E (ft)	Grid East (US ft)	Grid North (US ft)	Latitude	Longitude
FRICO 2-15HZ/21-15HZ SECTION LINES		0.00	0.00	-15.90	323583.22	1324152.84	40°13'12.454"N	104°38'25.463"W
FRICO 1-15HZ BHL ON PLAT (800'PL & 460'FEV-1)	12646.95	6910.00	3748.62	4251.43	3239615.43	1327941.68	40°13'49.494"N	104°38'30.444"W
FRICO 2-15HZ/21-15HZ HARDLINES (460' SETBACKS)		6920.00		-15.90	323583.22	1324152.84	40°13'12.454"N	104°38'25.463"W

True vertical depths are referenced to XTREME 8 (RKB)	Grid System: NAD83 / Lambert Colorado SP, Northern Zone (501), US feet
Measured depths are referenced to XTREME 8 (RKB)	North Reference: True north
XTREME 8 (RKB) to Mean Sea Level: 4812 feet	Scale: True distance
Mean Sea Level to Mud line (At Slot: SLOT#06 FRICO 1-15HZ (714FSL & 656FWL,SEC.15)): 0 feet	Depths are in feet
Coordinates are in feet referenced to Slot	Created by: cookdann on 9/14/2011



Scale 1 inch = 1500 ft

True Vertical Depth (ft)

6000

6750

7500

Tie On : 12.10° Inc, 6096.00ft MD, 6044.32ft TVD, -281.73ft VS

3.69°/100ft

End of 3D Arc : 10.11° Inc, 6150.00ft MD, 6097.30ft TVD, -291.12ft VS

8.33°/100ft

7in Casing Intermediate : 89.86° Inc, 7342.53ft MD, 6897.07ft TVD, 386.85ft VS

End of 3D Arc (J) : 89.86° Inc, 7342.53ft MD, 6897.07ft TVD, 386.86ft VS

survey to date 09-13-11 :
34.90° Inc, 6712.00ft MD,
6633.63ft TVD, -256.50ft VS

FRICO 1-15HZ BHL ON PLAT (800°FNL & 460°FEL, REV-1)

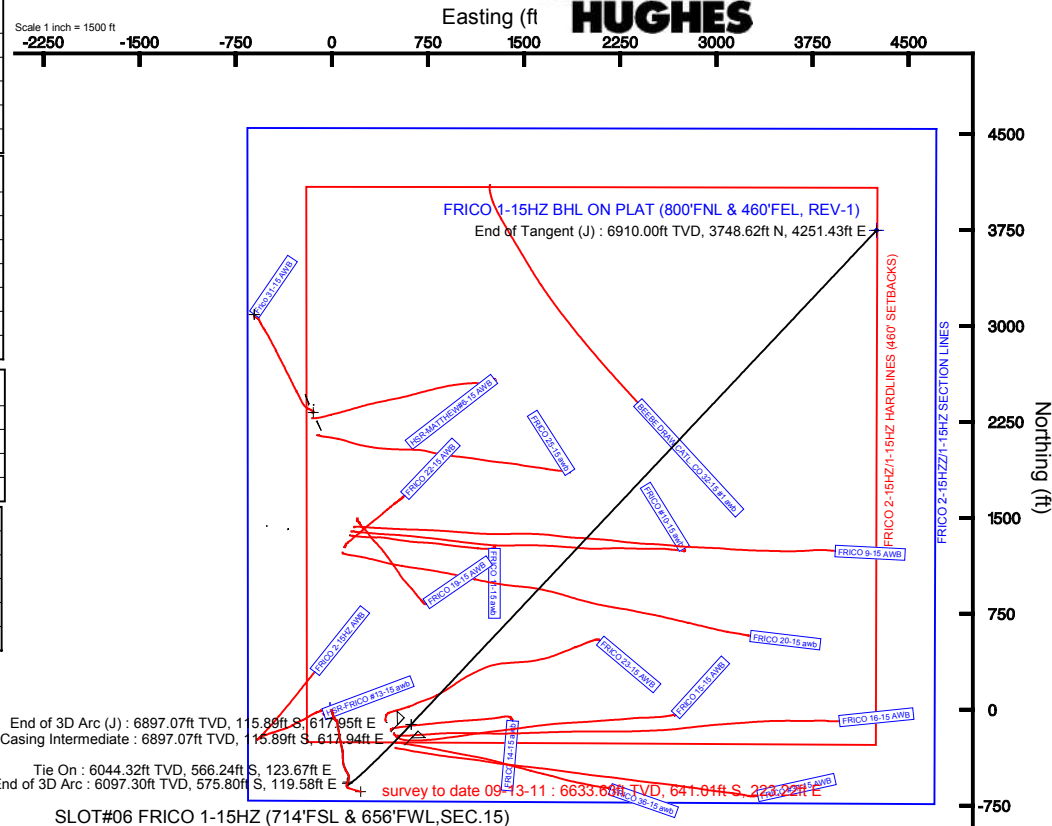
End of Tangent (J) : 89.86° Inc, 12646.95ft MD, 6910.00ft TVD, 5668.05ft VS

Vertical Section (ft)

-1500 -750 0 750 1500 2250 3000 3750 4500 5250 6000 6750 7500 8250

Azimuth 48.60° with reference 0.00 N, 0.00 E

Scale 1 inch = 1500 ft





Planned Wellpath Report

FRICO 1-15HZ ST#1 (REV-A.0) PWP

Page 1 of 5



REFERENCE WELLPATH IDENTIFICATION

Operator	ANADARKO E&P COMPANY LP	Slot	SLOT#06 FRICO 1-15HZ (714'FSL & 656'FWL,SEC.15)
Area	COLORADO	Well	FRICO 1-15HZ
Field	WELD COUNTY (KERR MCGEE)	Wellbore	FRICO 1-15HZ ST#1 PWB
Facility	SEC.15-T3N-R65W	Sidetrack from	FRICO 1-15HZ awb at 6096.00 MD

REPORT SETUP INFORMATION

Projection System	NAD83 / Lambert Colorado SP, Northern Zone (501), US feet	Software System	WellArchitect® 3.0.1
North Reference	True	User	Cookdanm
Scale	0.999957	Report Generated	9/14/2011 at 11:58:50 AM
Convergence at slot	0.54° East	Database/Source file	WellArchitectDB/FRICO_1-15HZ_ST#1_PWB.xml

WELLPATH LOCATION

	Local coordinates		Grid coordinates		Geographic coordinates	
	North[ft]	East[ft]	Easting[US ft]	Northing[US ft]	Latitude	Longitude
Slot Location	-2322.01	151.89	3235399.12	1324152.99	40°13'12.454"N	104°39'25.258"W
Facility Reference Pt			3235225.19	1326473.35	40°13'35.400"N	104°39'27.216"W
Field Reference Pt			3197771.84	1268891.29	40°04'09.600"N	104°47'36.000"W

WELLPATH DATUM

Calculation method	Minimum curvature	XTREME 8 (RKB) to Facility Vertical Datum	4812.00ft
Horizontal Reference Pt	Slot	XTREME 8 (RKB) to Mean Sea Level	4812.00ft
Vertical Reference Pt	XTREME 8 (RKB)	XTREME 8 (RKB) to Mud Line at Slot (SLOT#06 FRICO 1-15HZ (714'FSL & 656'FWL,SEC.15))	4812.00ft
MD Reference Pt	XTREME 8 (RKB)	Section Origin	N 0.00, E 0.00 ft
Field Vertical Reference	Mean Sea Level	Section Azimuth	48.60°



Planned Wellpath Report

FRICO 1-15HZ ST#1 (REV-A.0) PWP

Page 2 of 5



REFERENCE WELLPATH IDENTIFICATION

Operator	ANADARKO E&P COMPANY LP	Slot	SLOT#06 FRICO 1-15HZ (714'FSL & 656'FWL,SEC.15)
Area	COLORADO	Well	FRICO 1-15HZ
Field	WELD COUNTY (KERR MCGEE)	Wellbore	FRICO 1-15HZ ST#1 PWB
Facility	SEC.15-T3N-R65W	Sidetrack from	FRICO 1-15HZ awb at 6096.00 MD

WELLPATH DATA (70 stations) † = interpolated/extrapolated station

MD [ft]	Inclination [°]	Azimuth [°]	TVD [ft]	Vert Sect [ft]	North [ft]	East [ft]	DLS [°/100ft]	Comments
6096.00	12.100	202.900	6044.32	-281.73	-566.24	123.67	0.00	Tie On
6150.00	10.113	203.502	6097.30	-291.12	-575.80	119.58	3.69	End of 3D Arc
6196.00†	6.641	192.091	6142.81	-296.92	-582.11	117.41	8.33	
6296.00†	4.347	95.595	6242.50	-298.99	-588.15	119.98	8.33	
6396.00†	11.507	60.427	6341.53	-286.62	-583.58	132.44	8.33	
6496.00†	19.612	52.953	6437.79	-260.07	-568.52	154.55	8.33	
6596.00†	27.848	49.769	6529.26	-219.92	-543.28	185.83	8.33	
6696.00†	36.127	47.957	6614.01	-167.00	-508.40	225.63	8.33	
6712.00†	37.453	47.734	6626.82	-157.41	-501.96	232.73	8.33	survey to date 09-13-11
6796.00†	44.423	46.748	6690.24	-102.43	-464.60	273.09	8.33	
6896.00†	52.729	45.852	6756.34	-27.57	-412.81	327.23	8.33	
6996.00†	61.041	45.136	6810.93	55.99	-354.13	386.89	8.33	
7096.00†	69.356	44.526	6852.84	146.49	-289.80	450.83	8.33	
7196.00†	77.672	43.981	6881.19	242.02	-221.17	517.67	8.33	
7296.00†	85.990	43.469	6895.39	340.56	-149.70	586.03	8.33	
7342.53	89.860	43.235	6897.07	386.86	-115.89	617.95	8.33	End of 3D Arc (J)
7396.00†	89.860	43.235	6897.21	440.09	-76.94	654.57	0.00	
7496.00†	89.860	43.235	6897.45	539.65	-4.08	723.07	0.00	
7596.00†	89.860	43.235	6897.69	639.21	68.77	791.57	0.00	
7696.00†	89.860	43.235	6897.94	738.78	141.63	860.07	0.00	
7796.00†	89.860	43.235	6898.18	838.34	214.48	928.57	0.00	
7896.00†	89.860	43.235	6898.42	937.90	287.34	997.07	0.00	
7996.00†	89.860	43.235	6898.67	1037.46	360.19	1065.57	0.00	
8096.00†	89.860	43.235	6898.91	1137.02	433.04	1134.06	0.00	
8196.00†	89.860	43.235	6899.15	1236.59	505.90	1202.56	0.00	
8296.00†	89.860	43.235	6899.40	1336.15	578.75	1271.06	0.00	
8396.00†	89.860	43.235	6899.64	1435.71	651.61	1339.56	0.00	
8496.00†	89.860	43.235	6899.89	1535.27	724.46	1408.06	0.00	
8596.00†	89.860	43.235	6900.13	1634.84	797.32	1476.56	0.00	
8696.00†	89.860	43.235	6900.37	1734.40	870.17	1545.06	0.00	
8796.00†	89.860	43.235	6900.62	1833.96	943.03	1613.56	0.00	
8896.00†	89.860	43.235	6900.86	1933.52	1015.88	1682.06	0.00	
8996.00†	89.860	43.235	6901.10	2033.09	1088.74	1750.56	0.00	
9096.00†	89.860	43.235	6901.35	2132.65	1161.59	1819.06	0.00	
9196.00†	89.860	43.235	6901.59	2232.21	1234.45	1887.56	0.00	
9296.00†	89.860	43.235	6901.83	2331.77	1307.30	1956.06	0.00	
9396.00†	89.860	43.235	6902.08	2431.33	1380.15	2024.55	0.00	
9496.00†	89.860	43.235	6902.32	2530.90	1453.01	2093.05	0.00	
9596.00†	89.860	43.235	6902.57	2630.46	1525.86	2161.55	0.00	
9696.00†	89.860	43.235	6902.81	2730.02	1598.72	2230.05	0.00	
9796.00†	89.860	43.235	6903.05	2829.58	1671.57	2298.55	0.00	
9896.00†	89.860	43.235	6903.30	2929.15	1744.43	2367.05	0.00	
9996.00†	89.860	43.235	6903.54	3028.71	1817.28	2435.55	0.00	
10096.00†	89.860	43.235	6903.78	3128.27	1890.14	2504.05	0.00	
10196.00†	89.860	43.235	6904.03	3227.83	1962.99	2572.55	0.00	



Planned Wellpath Report

FRICO 1-15HZ ST#1 (REV-A.0) PWP

Page 3 of 5



REFERENCE WELLPATH IDENTIFICATION

Operator	ANADARKO E&P COMPANY LP	Slot	SLOT#06 FRICO 1-15HZ (714'FSL & 656'FWL,SEC.15)
Area	COLORADO	Well	FRICO 1-15HZ
Field	WELD COUNTY (KERR MCGEE)	Wellbore	FRICO 1-15HZ ST#1 PWB
Facility	SEC.15-T3N-R65W	Sidetrack from	FRICO 1-15HZ awb at 6096.00 MD

WELLPATH DATA (70 stations) † = interpolated/extrapolated station

MD [ft]	Inclination [°]	Azimuth [°]	TVD [ft]	Vert Sect [ft]	North [ft]	East [ft]	DLS [°/100ft]	Comments
10296.00†	89.860	43.235	6904.27	3327.39	2035.85	2641.05	0.00	
10396.00†	89.860	43.235	6904.52	3426.96	2108.70	2709.55	0.00	
10496.00†	89.860	43.235	6904.76	3526.52	2181.55	2778.05	0.00	
10596.00†	89.860	43.235	6905.00	3626.08	2254.41	2846.55	0.00	
10696.00†	89.860	43.235	6905.25	3725.64	2327.26	2915.05	0.00	
10796.00†	89.860	43.235	6905.49	3825.21	2400.12	2983.54	0.00	
10896.00†	89.860	43.235	6905.73	3924.77	2472.97	3052.04	0.00	
10996.00†	89.860	43.235	6905.98	4024.33	2545.83	3120.54	0.00	
11096.00†	89.860	43.235	6906.22	4123.89	2618.68	3189.04	0.00	
11196.00†	89.860	43.235	6906.46	4223.45	2691.54	3257.54	0.00	
11296.00†	89.860	43.235	6906.71	4323.02	2764.39	3326.04	0.00	
11396.00†	89.860	43.235	6906.95	4422.58	2837.25	3394.54	0.00	
11496.00†	89.860	43.235	6907.20	4522.14	2910.10	3463.04	0.00	
11596.00†	89.860	43.235	6907.44	4621.70	2982.96	3531.54	0.00	
11696.00†	89.860	43.235	6907.68	4721.27	3055.81	3600.04	0.00	
11796.00†	89.860	43.235	6907.93	4820.83	3128.66	3668.54	0.00	
11896.00†	89.860	43.235	6908.17	4920.39	3201.52	3737.04	0.00	
11996.00†	89.860	43.235	6908.41	5019.95	3274.37	3805.54	0.00	
12096.00†	89.860	43.235	6908.66	5119.52	3347.23	3874.03	0.00	
12196.00†	89.860	43.235	6908.90	5219.08	3420.08	3942.53	0.00	
12296.00†	89.860	43.235	6909.14	5318.64	3492.94	4011.03	0.00	
12396.00†	89.860	43.235	6909.39	5418.20	3565.79	4079.53	0.00	
12496.00†	89.860	43.235	6909.63	5517.76	3638.65	4148.03	0.00	
12596.00†	89.860	43.235	6909.88	5617.33	3711.50	4216.53	0.00	
12646.95	89.860	43.235	6910.00 ¹	5668.05	3748.62	4251.43	0.00	End of Tangent (J)

HOLE & CASING SECTIONS - Ref Wellbore: FRICO 1-15HZ ST#1 PWB Ref Wellpath: FRICO 1-15HZ ST#1 (REV-A.0) PWP

String/Diameter	Start MD [ft]	End MD [ft]	Interval [ft]	Start TVD [ft]	End TVD [ft]	Start N/S [ft]	Start E/W [ft]	End N/S [ft]	End E/W [ft]
7in Casing Intermediate	6096.00	7342.53	1246.53	6044.32	6897.07	-566.24	123.67	-115.89	617.94



Planned Wellpath Report

FRICO 1-15HZ ST#1 (REV-A.0) PWP

Page 4 of 5



REFERENCE WELLPATH IDENTIFICATION

Operator	ANADARKO E&P COMPANY LP	Slot	SLOT#06 FRICO 1-15HZ (714'FSL & 656'FWL,SEC.15)
Area	COLORADO	Well	FRICO 1-15HZ
Field	WELD COUNTY (KERR MCGEE)	Wellbore	FRICO 1-15HZ ST#1 PWB
Facility	SEC.15-T3N-R65W	Sidetrack from	FRICO 1-15HZ awb at 6096.00 MD

TARGETS

Name	MD [ft]	TVD [ft]	North [ft]	East [ft]	Grid East [US ft]	Grid North [US ft]	Latitude	Longitude	Shape
FRICO 2-15HZZ/1-15HZ SECTION LINES		0.00	0.00	-15.90	3235383.22	1324152.84	40°13'12.454"N	104°39'25.463"W	polygon
1) FRICO 1-15HZ BHL ON PLAT (800'FNL & 460'FEL, REV-1)	12646.95	6910.00	3748.62	4251.43	3239614.53	1327941.68	40°13'49.494"N	104°38'30.444"W	point
FRICO 2-15HZ/1-15HZ HARDLINES (460' SETBACKS)		6920.00	0.00	-15.90	3235383.22	1324152.84	40°13'12.454"N	104°39'25.463"W	polygon

SURVEY PROGRAM - Ref Wellbore: FRICO 1-15HZ ST#1 PWB Ref Wellpath: FRICO 1-15HZ ST#1 (REV-A.0) PWP

Start MD [ft]	End MD [ft]	Positional Uncertainty Model	Log Name/Comment	Wellbore
17.00	6096.00	NaviTrak (Standard)		FRICO 1-15HZ awb
6096.00	12646.95	NaviTrak (Standard)		FRICO 1-15HZ ST#1 PWB



Planned Wellpath Report

FRICO 1-15HZ ST#1 (REV-A.0) PWP

Page 5 of 5

**REFERENCE WELLPATH IDENTIFICATION**

Operator	ANADARKO E&P COMPANY LP	Slot	SLOT#06 FRICO 1-15HZ (714'FSL & 656'FWL,SEC.15)
Area	COLORADO	Well	FRICO 1-15HZ
Field	WELD COUNTY (KERR MCGEE)	Wellbore	FRICO 1-15HZ ST#1 PWB
Facility	SEC.15-T3N-R65W	Sidetrack from	FRICO 1-15HZ awb at 6096.00 MD

WELLPATH COMMENTS

MD [ft]	Inclination [°]	Azimuth [°]	TVD [ft]	Comment
6712.00	37.453	47.734	6626.82	survey to date 09-13-11