

<div>RMWSROCKY MOUNTAIN WIRELINE SERVICE</div>			CEMENT BOND LOG GAMMA RAY / CCL		
Company WILLIAMS PRODUCTION RMT CO					
Well GM 433 - 31					
Field GRAND VALLEY					
County GARFIELD			State COLORADO		
Location: SHU - 2236 FEL, 1888 FEL BH - 1837 FEL, 1850 FEL SEC 31 TWP 6S RGE 96W Permian Basin Log Measured From K.B. K.B. Date 06-02-2011 Run Number 010E Depth Differ 6660 Present Depth Differ 6290			API #: 05 - 045 - 18442 Other Services		
Depth Logger 6290			Elevation 6100' MS 6124' DE 6123' GL 6100'		
Bottom Logger Interval 6290					
Fluid Level 459'					
True Fluid WATER					
Max. Recorder Temp 104					
Estimated Cement Top 208'					
Logistics GEANT J71 ILRSCM					
Wireless By BO (BSCC KS)					
Run Number CME 135' TWO 7 875'			Casing Record From 687' To 925' Size 4.5" Weight 11.9# SURFACE 6897' SURFACE 6897'		

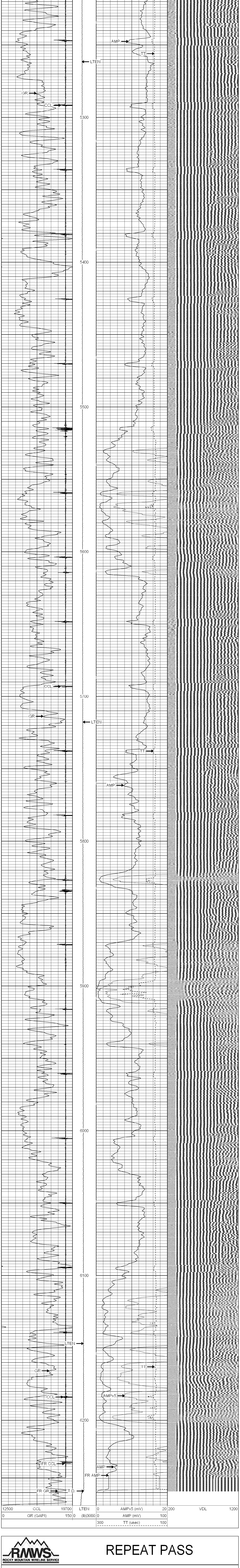
<<< Fold Here >>>

All interpretations are opinions based on inferences from electrical or other measurements and we cannot and do not guarantee the accuracy or correctness of any interpretation, and we shall not, except in the case of gross or willful negligence on our part, be liable or responsible for any loss, costs, damages, or expenses incurred or sustained by anyone resulting from any interpretation made by any of our officers, agents or employees. These interpretations are also subject to our general terms and conditions set out in our current Price Schedule.

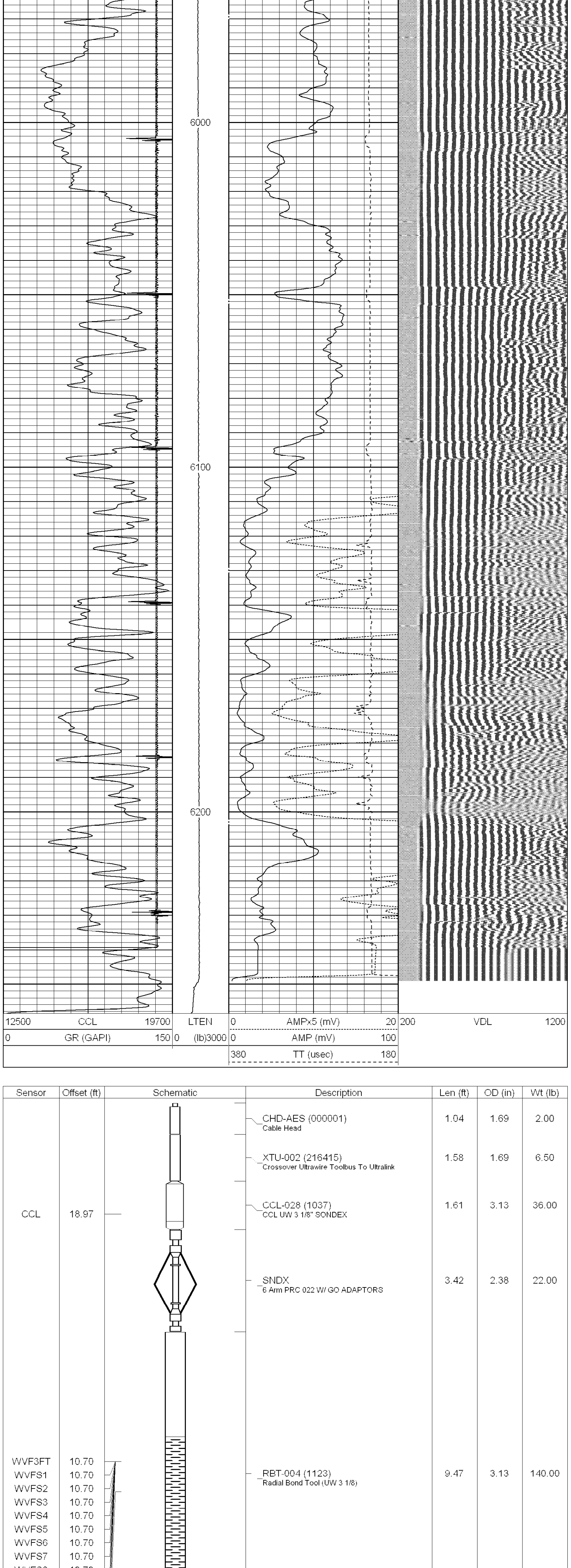
WARRIOR 7.0 SOFTWARE - Comments

NOTE: LOG WAS DEPTH CORRELATED USING BAKER HUGHES RBL DATED 3-21-11 MAIN PASS 6" ± 100' CSG PSI = STATIC	

Database File: 060211_williams_gm_433_31.db	
Dataset Pathname: MAIN/pass1.2	
Presentation Format: rmws_dsc	
Dataset Creation: Thu Jun 02 18:42:19 2011 by Calc Std Casedhole 10121	
Charted by: Depth in Feet scaled 1:240	



Database File: 060211_williams_gm_433_31.db	
Dataset Pathname: REPEAT/pass1.1	
Presentation Format: rmws_dsc	
Dataset Creation: Thu Jun 02 18:43:26 2011 by Calc Std Casedhole 10121	
Charted by: Depth in Feet scaled 1:240	



Dataset: 060211_williams_gm_433_31.db; field/well/MAIN/pass1.2	
Total Length: 22.69 ft	
Total Weight: 239.20 lb	
O.D.: 3.13 in	

Company WILLIAMS PRODUCTION RMT CO	
Well GM 433 - 31	
Field GRAND VALLEY	
County GARFIELD	
State COLORADO	