



Mesa Wireline

Cement Bond Log

Company ENCANA OIL AND GAS INC.

Well KNIGHT 12-5

Field MAMM CREEK

County GARFIELD State CO

Location: API #: 05-045-6832-00

1678' FNL & 1161' FWL

SEC: 22 TWP: 7S RGE: 92W

Permanent Datum
Log Measured From
Drilling Measured From

GROUND LEVEL
KB=14'

Elevation

K.B. 6402
D.F. 6401'
G.L. 6388

N/A

Other Services

Date 12 JAN 2010

Run Number ONE

Depth Driller 5800'

Depth Logger 3228'

Bottom Logged Interval 3228'

Top Log Interval SURFACE

Open Hole Size 7.875"

Type Fluid WATER

Density / Viscosity 8.4#

Max. Recorded Temp. N/A

Estimated Cement Top N/A

Time Well Ready N/A

Time Logger on Bottom N/A

Equipment Number ST0302

Location GRAND JUNCTION

Recorded By M. CARPENTER

Witnessed By J. NOLAN

SCOTT SANDERS

Borehole Record

Run Number Bit From To Size Weight From To

Casing Record

Surface String 8.65" 24# SURFACE 437'

Prot. String 4.50" 11.6# SURFACE 5706'

Production String

<<< Fold Here >>>

All interpretations are opinions based on inferences from electrical or other measurements and we cannot and do not guarantee the accuracy or correctness of any interpretation, and we shall not, except in the case of gross or willful negligence on our part, be liable or responsible for any loss, costs, damages, or expenses incurred or sustained by anyone resulting from any interpretation made by any of our officers, agents or employees. These interpretations are also subject to our general terms and conditions set out in our current Price Schedule.

Comments


NO OTHER LOG WAS AVAILABLE TO CORRELATE TO.

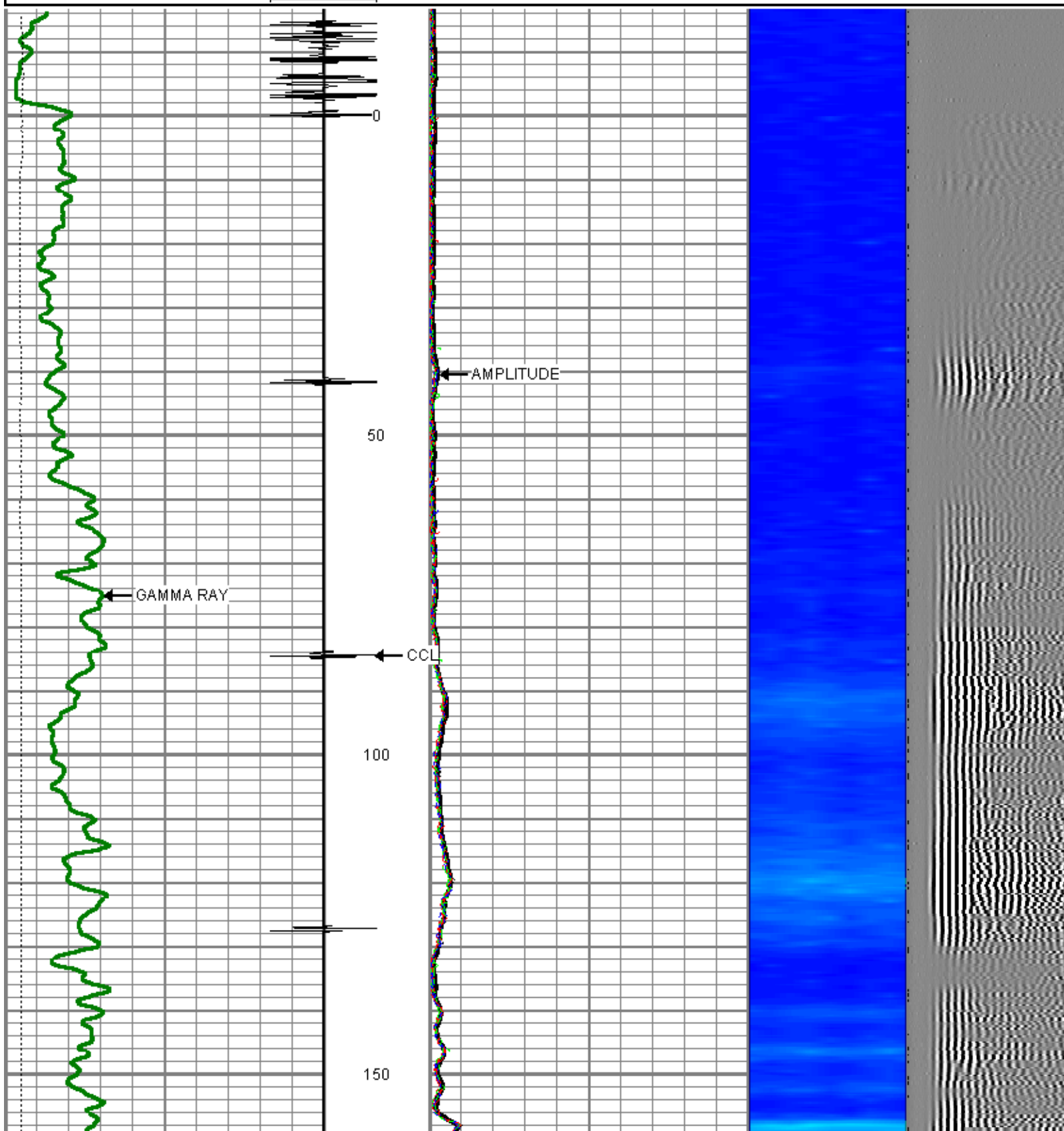
WE APPRECIATE YOUR BUSINESS, MESA WIRELINE LLC, GRAND JUNCTION CO. (970) 257-0

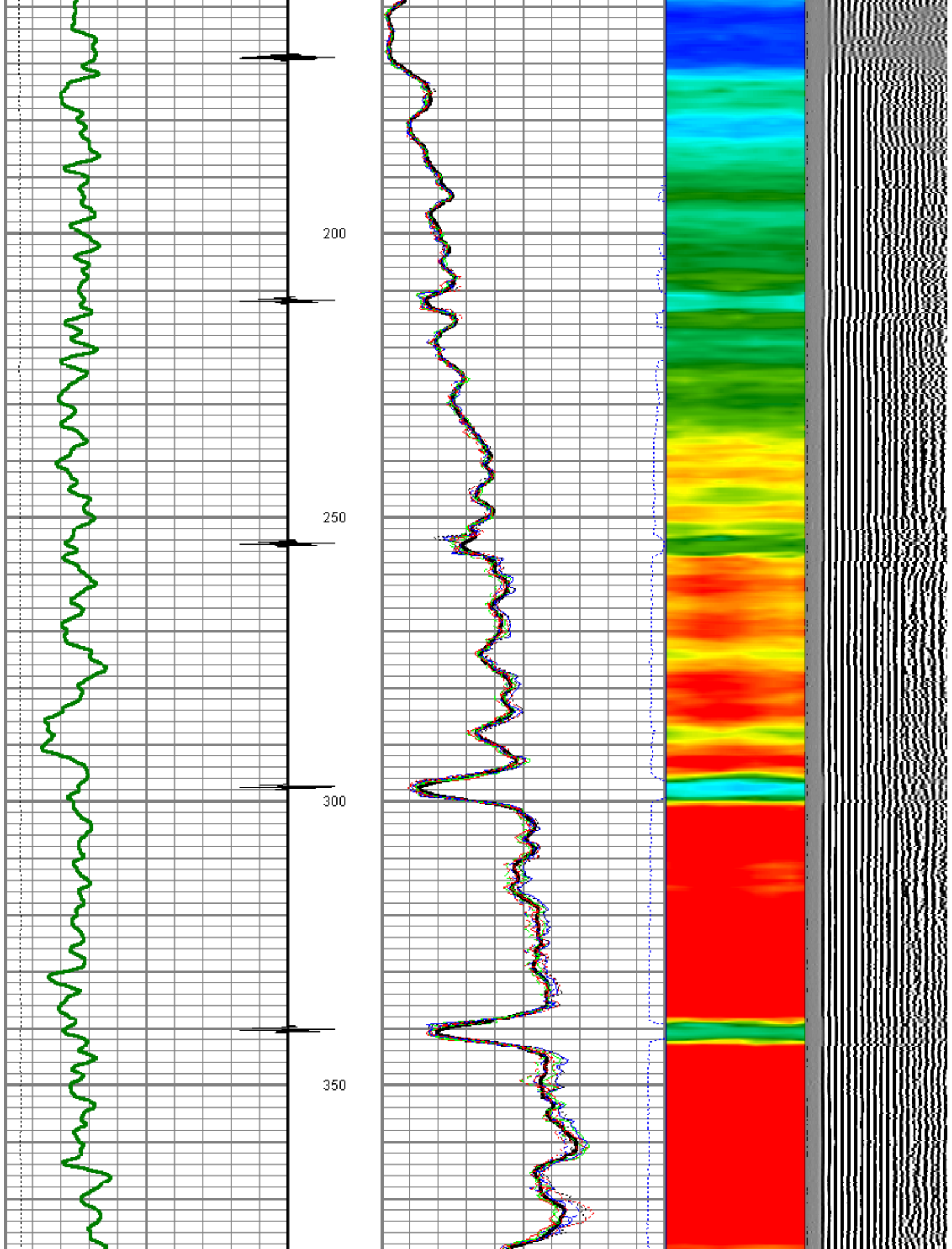


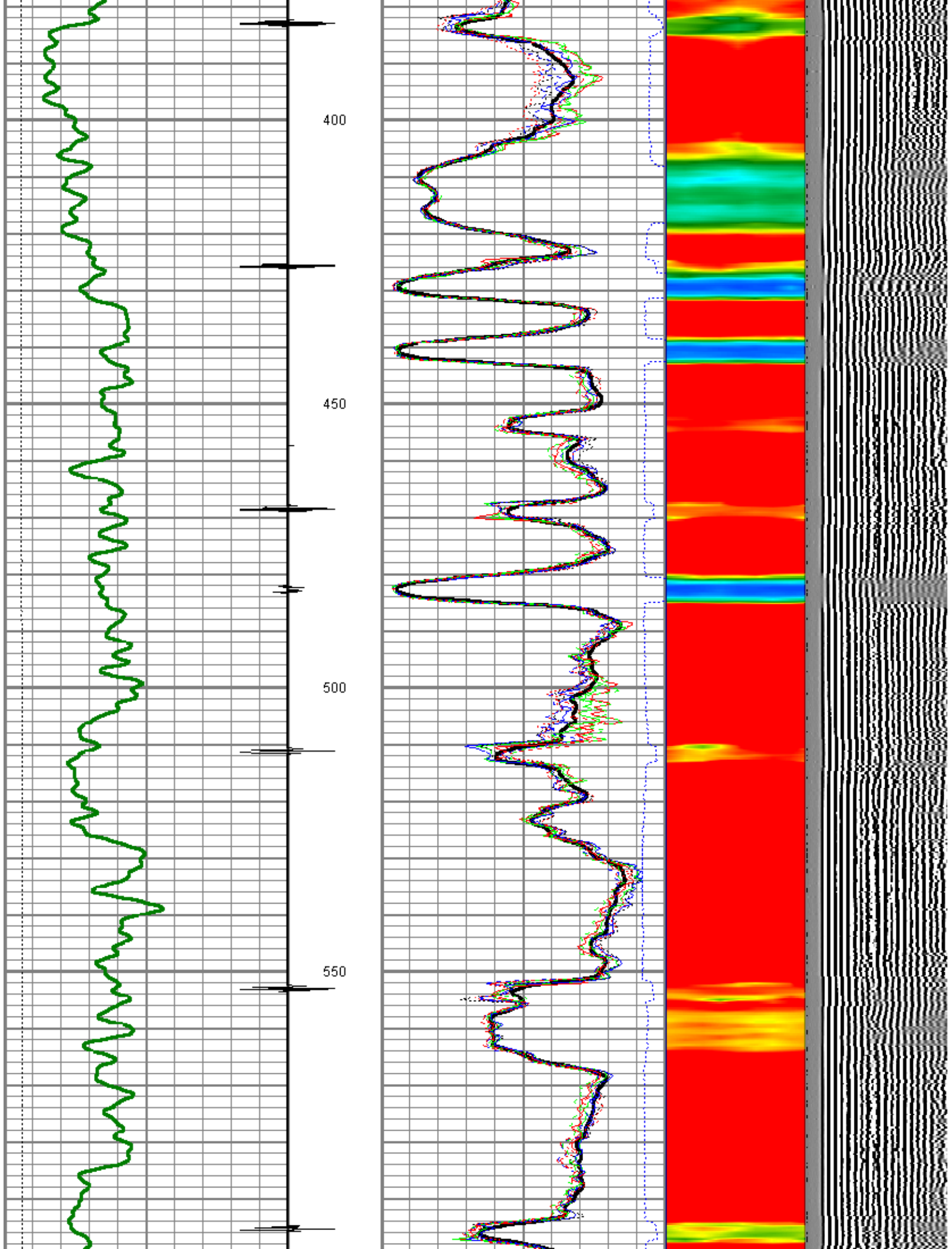
MAIN PASS 5"-100'

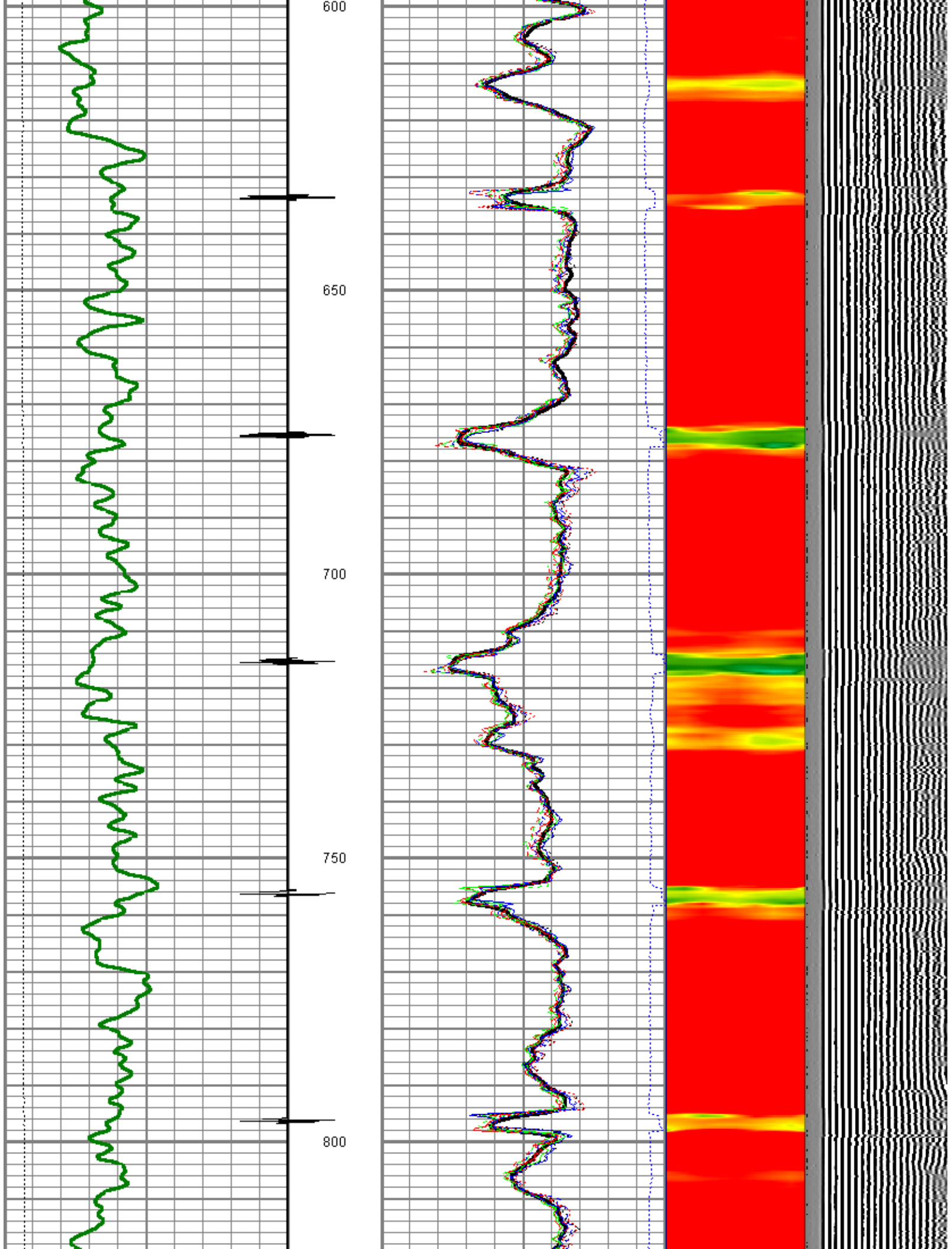
Database File: knight12-5.db
 Dataset Pathname: pass4
 Presentation Format: rbtfinal
 Dataset Creation: Tue Jan 12 08:48:24 2010 by Log Std Casedhole 08121
 Charted by: Depth in Feet scaled 1:240

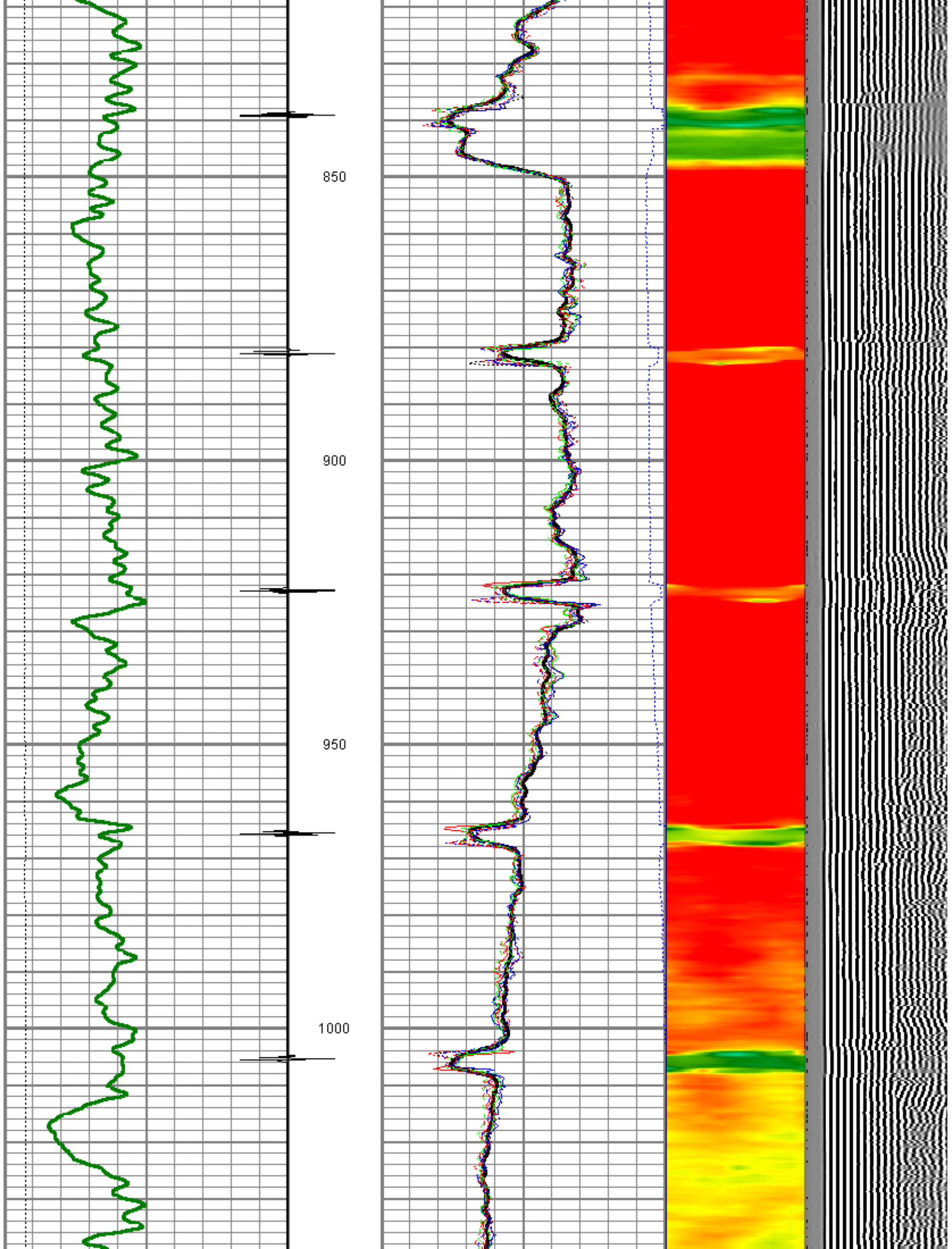
0	Gamma Ray (GAPI)	200	0	Amplitude (mV)	100	1	SECTORS	8	Variable Density	
0	LTEN (lb)	5000	0	TT3FT (usec)	200	0		70	200	1200
		CCL								

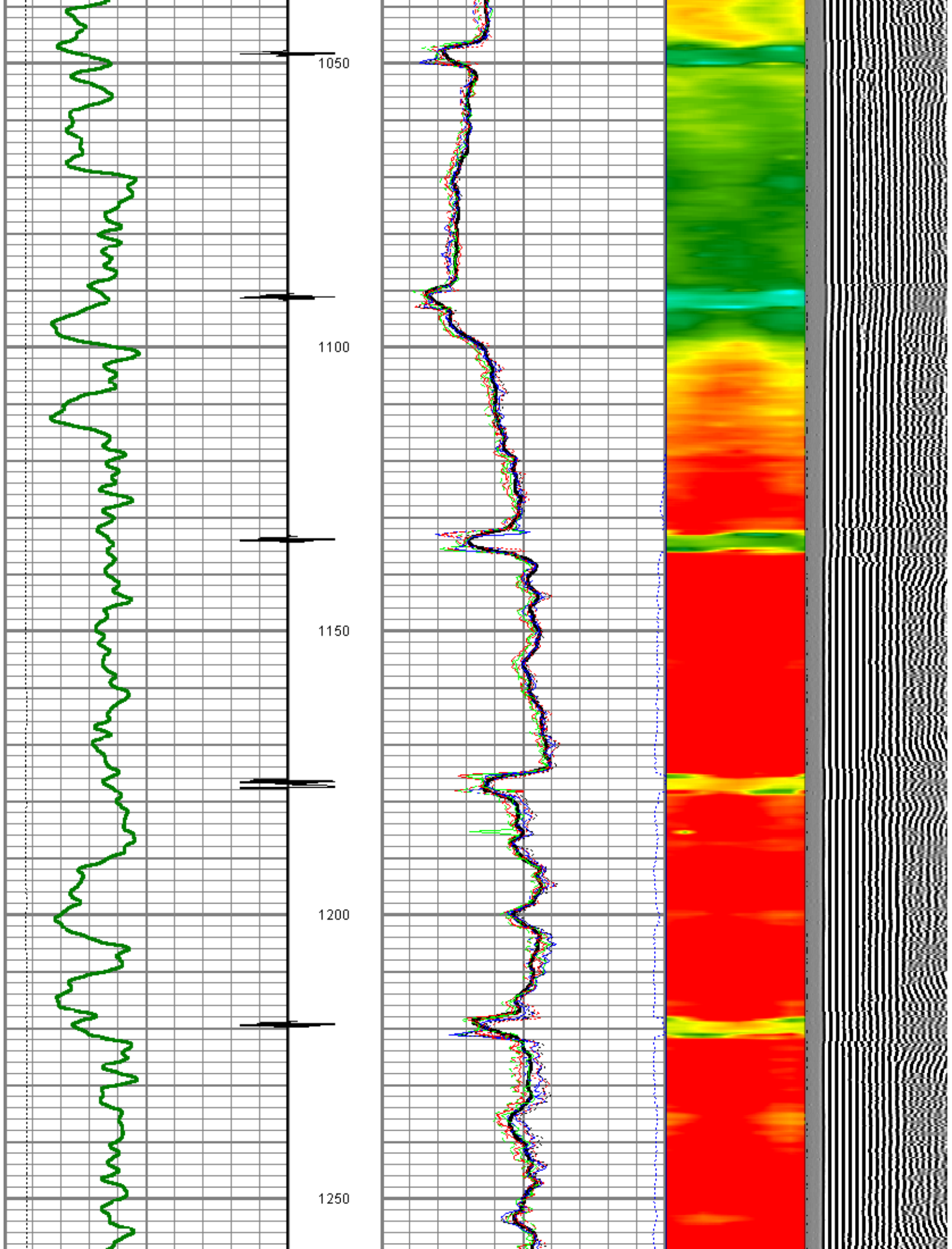


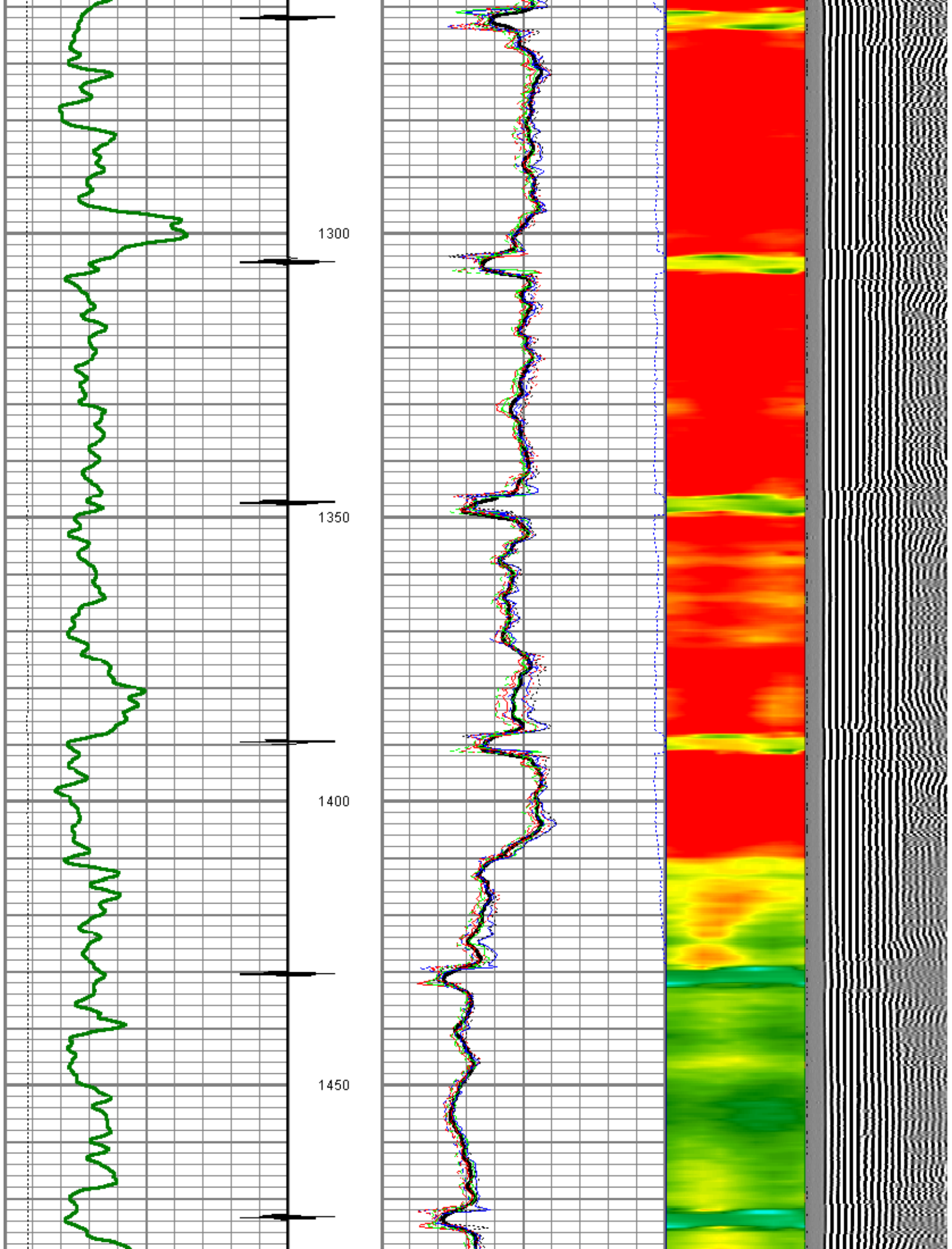


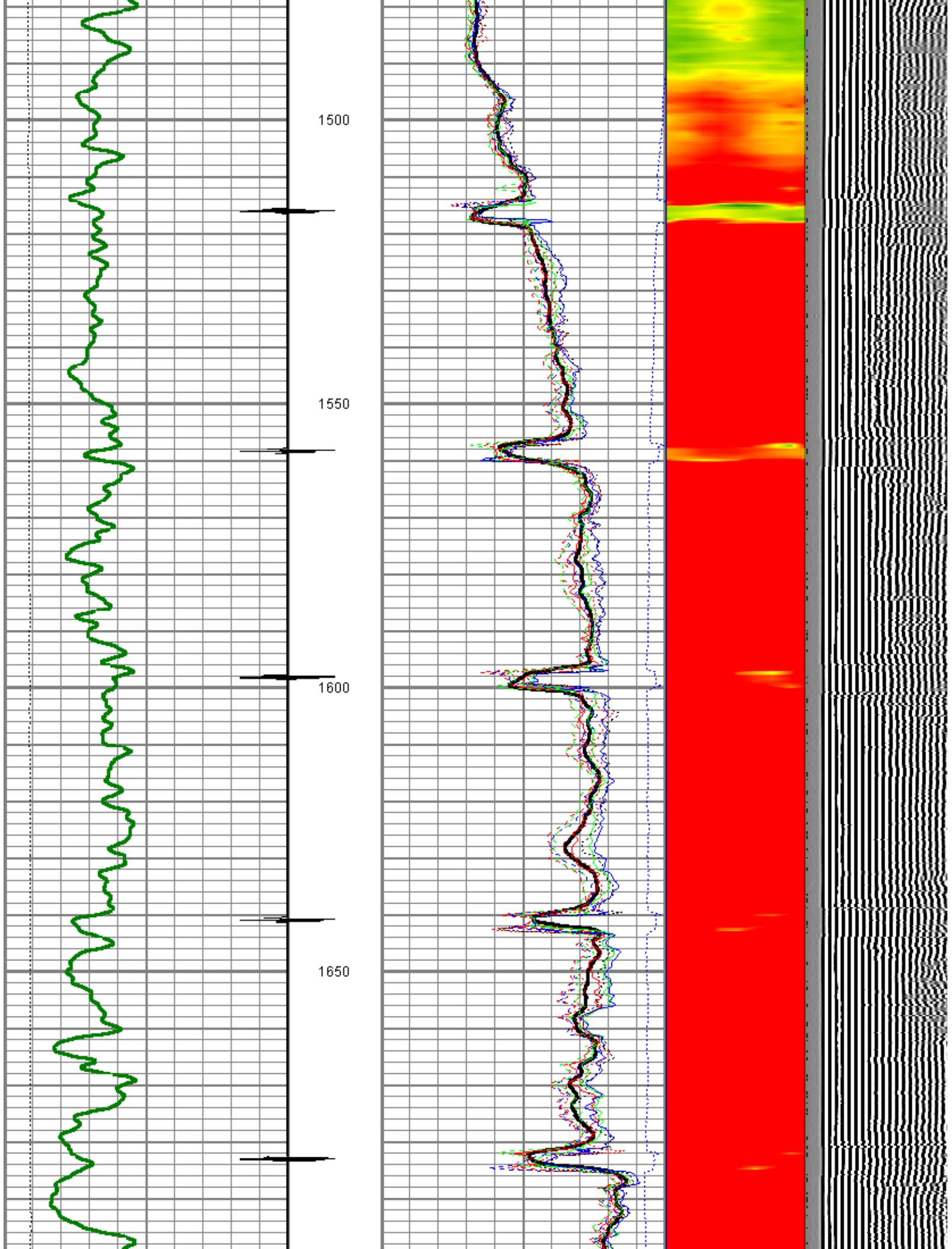


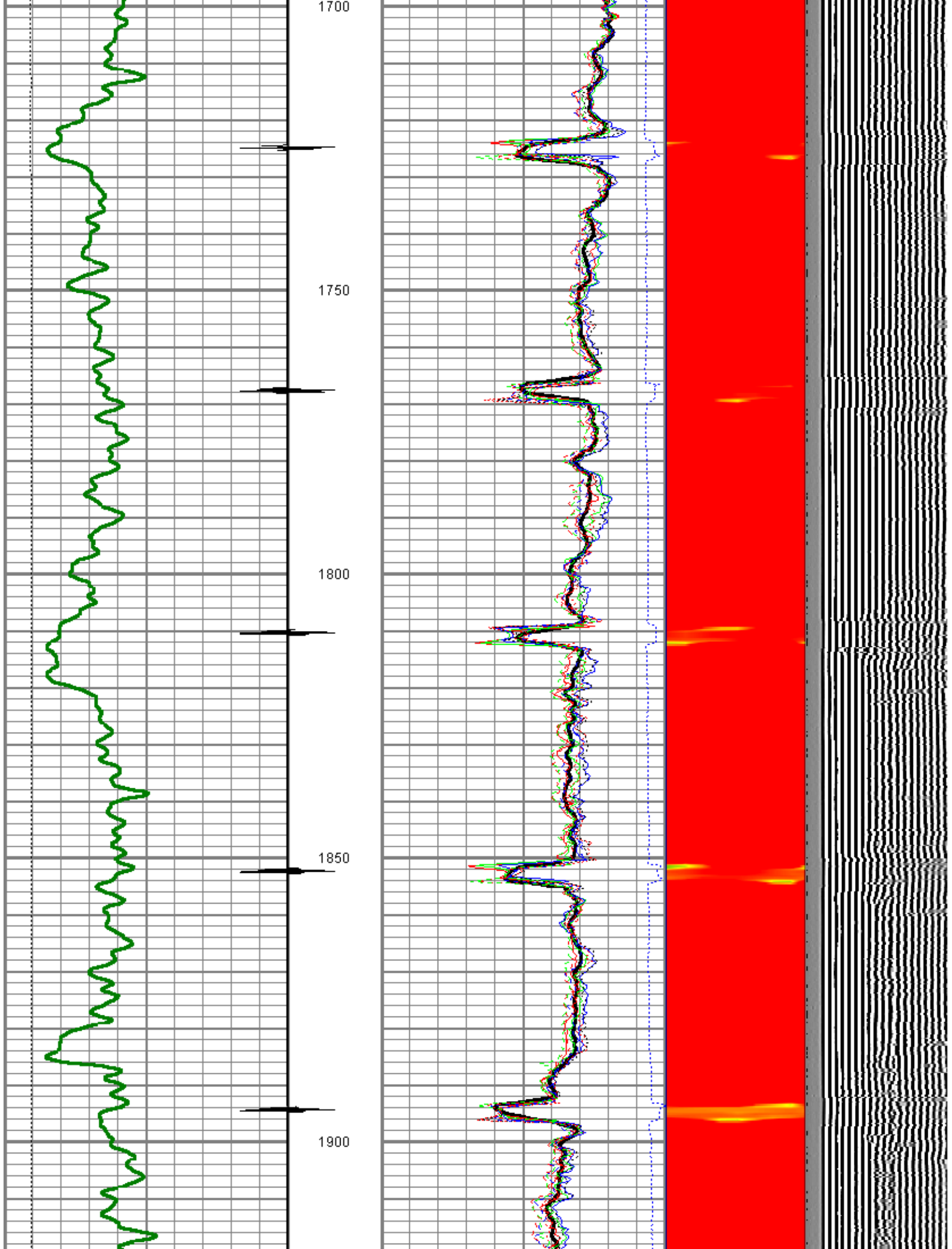


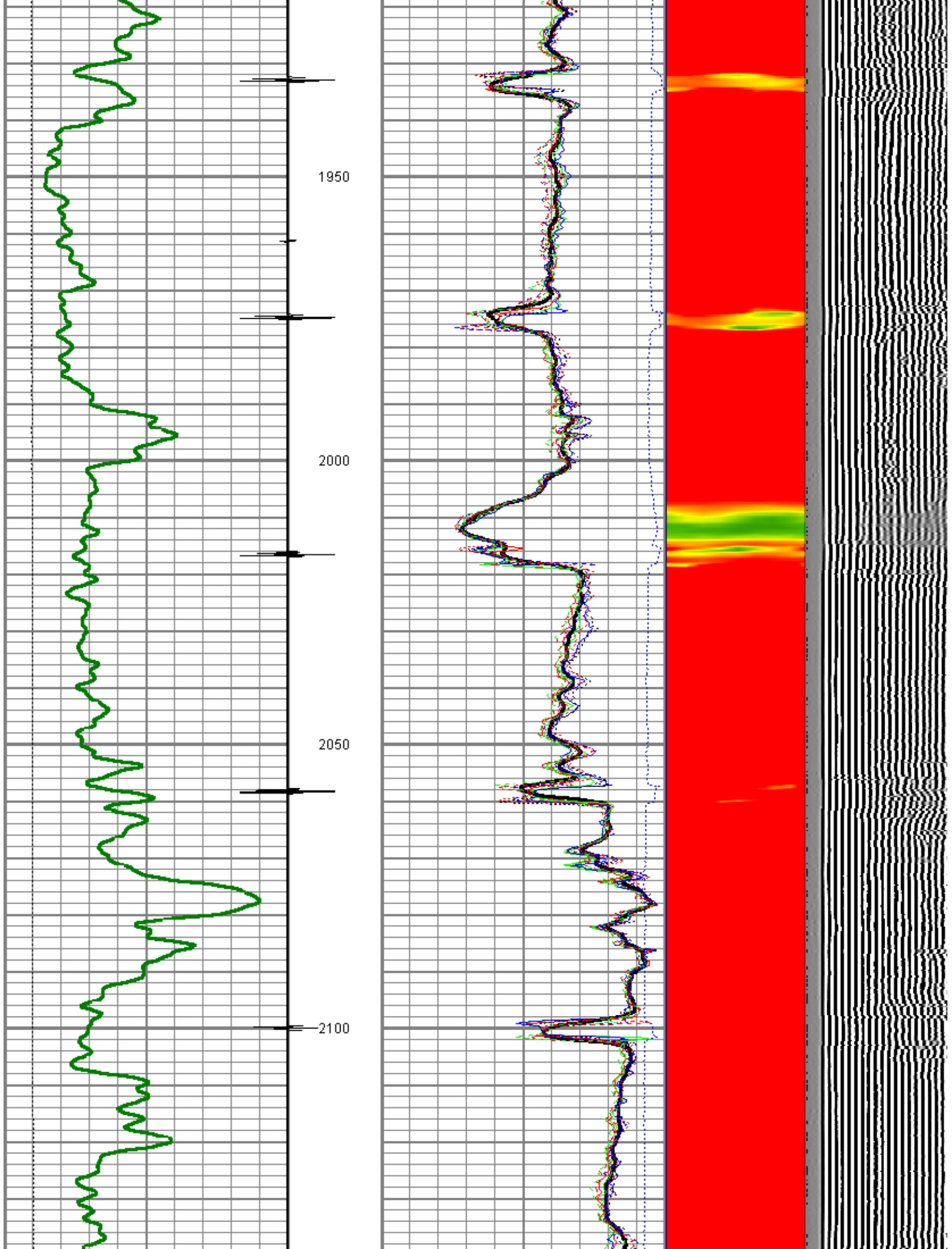


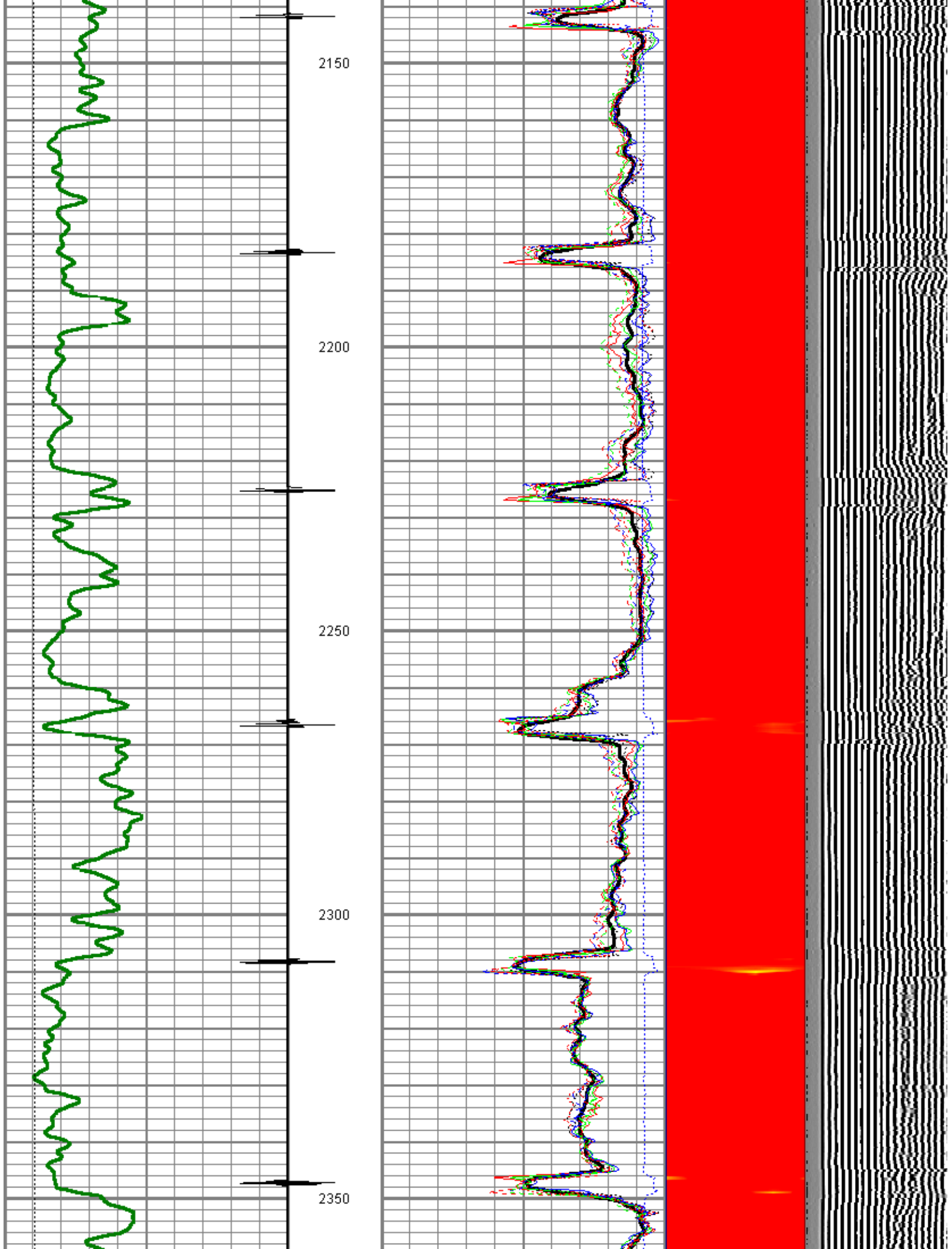


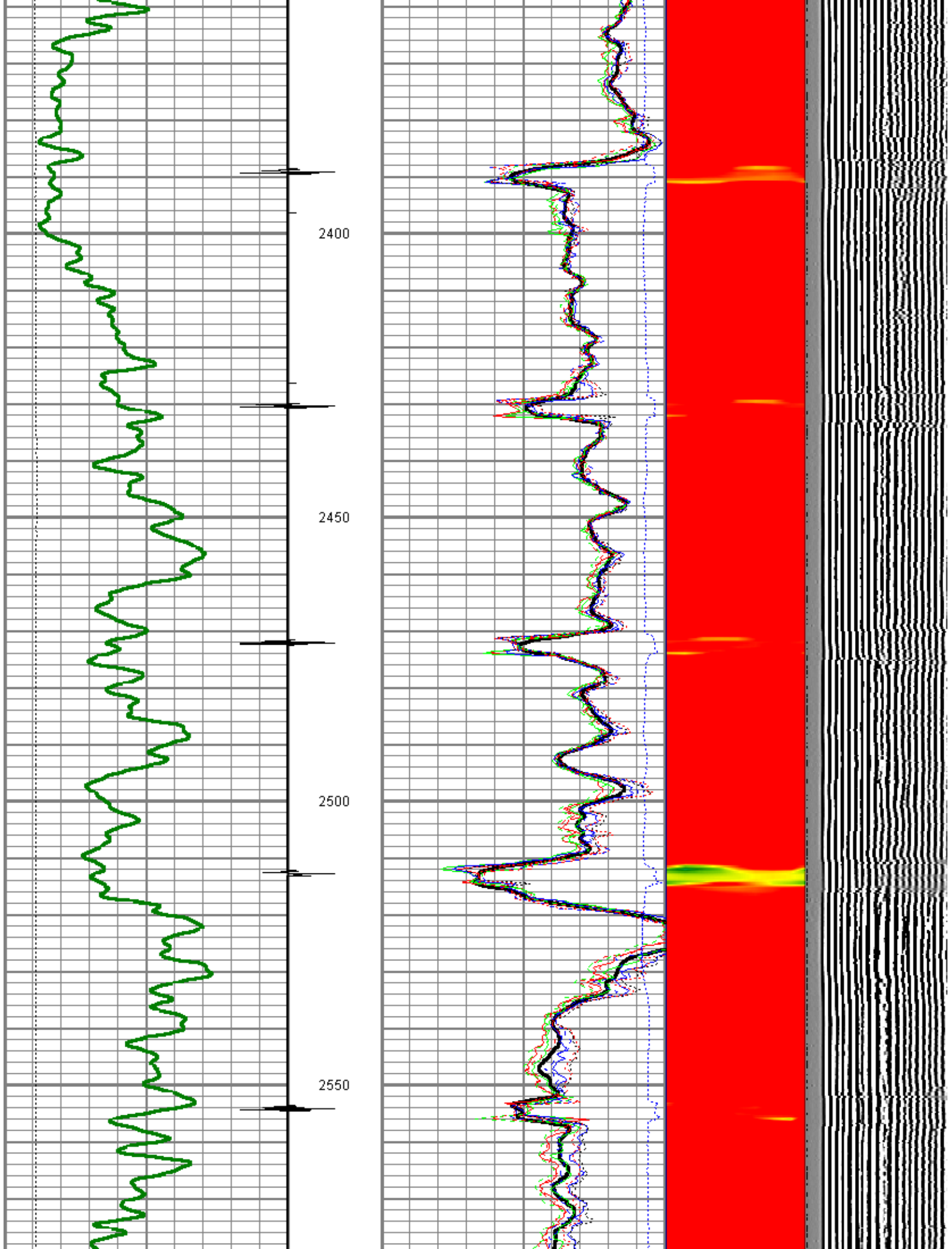


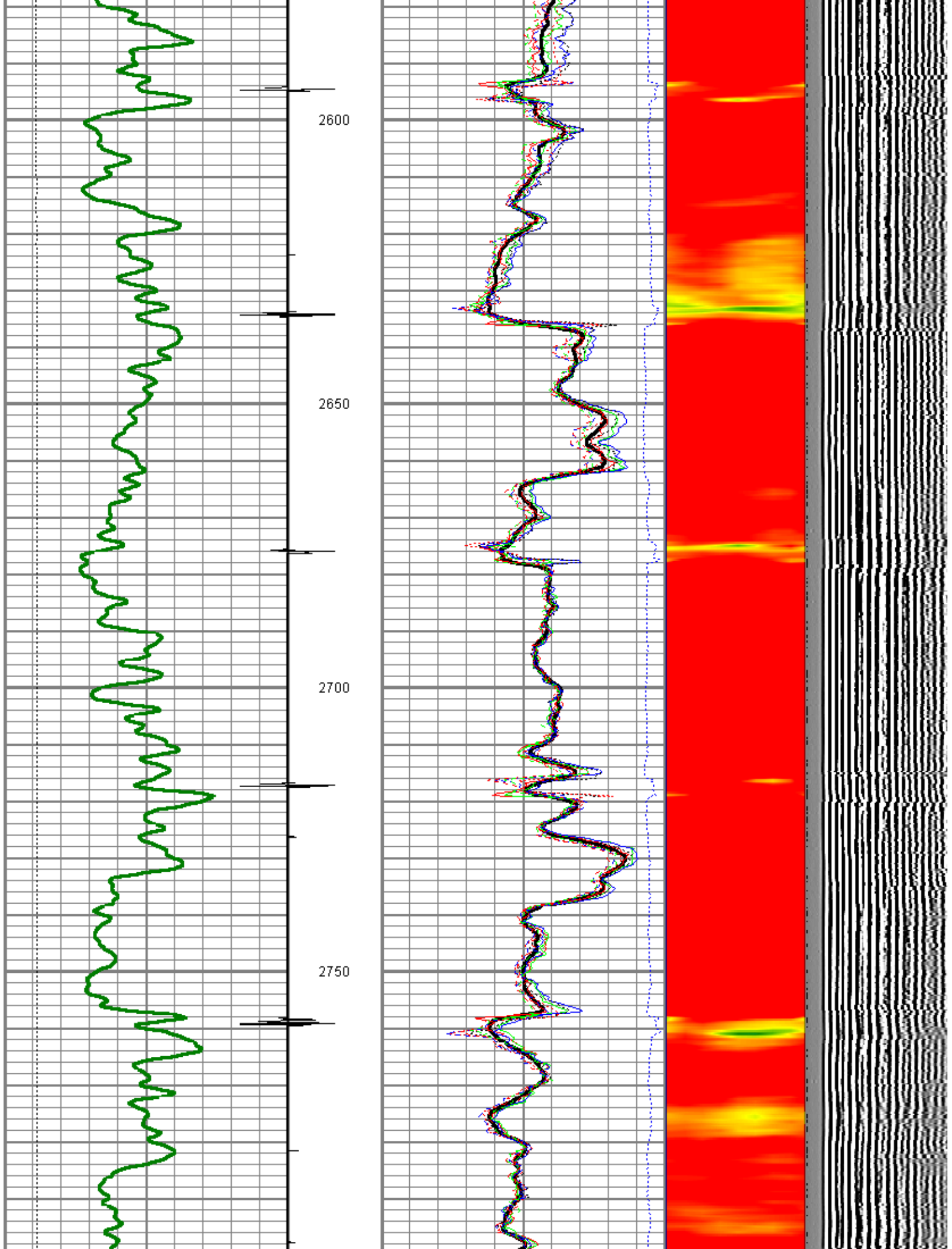


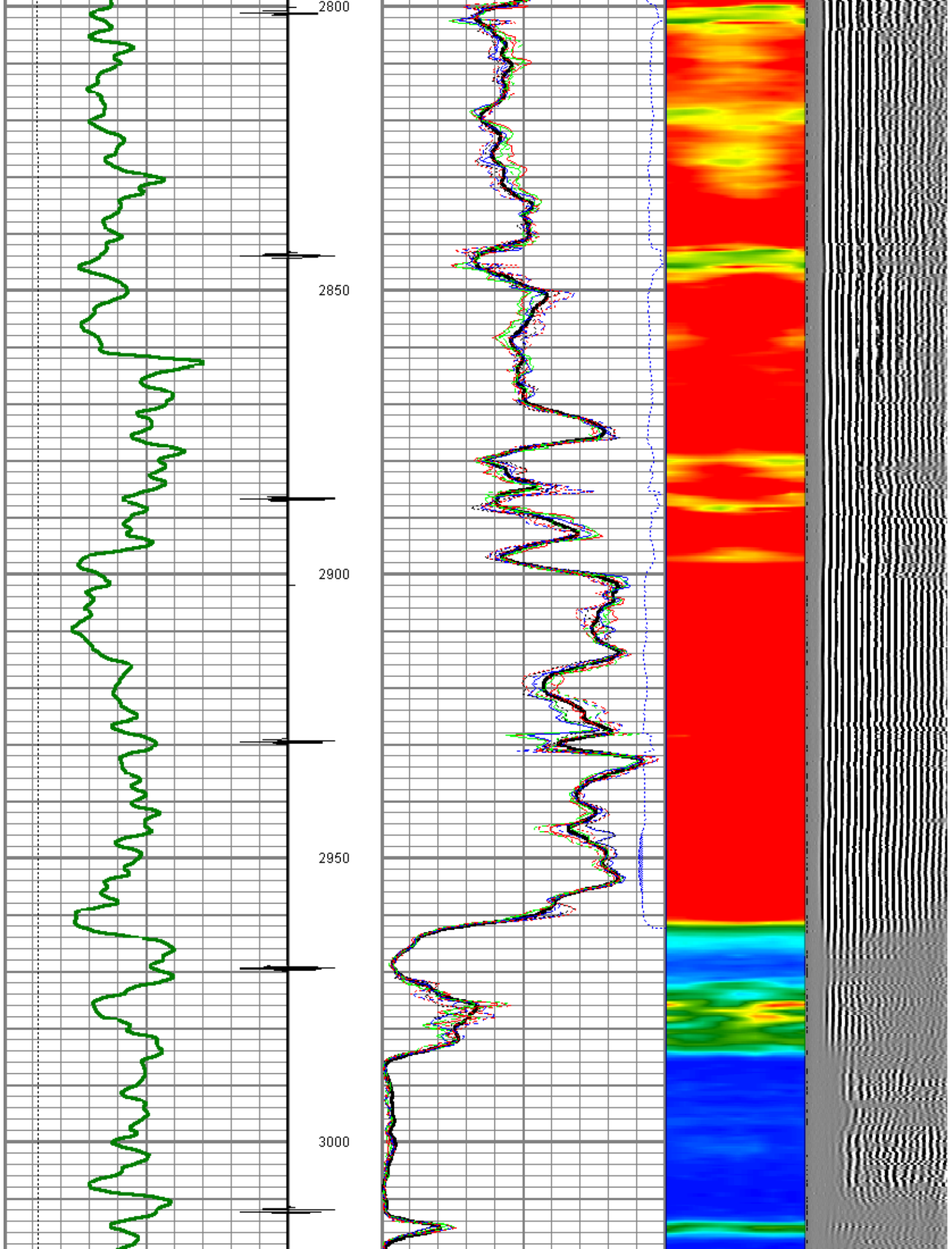


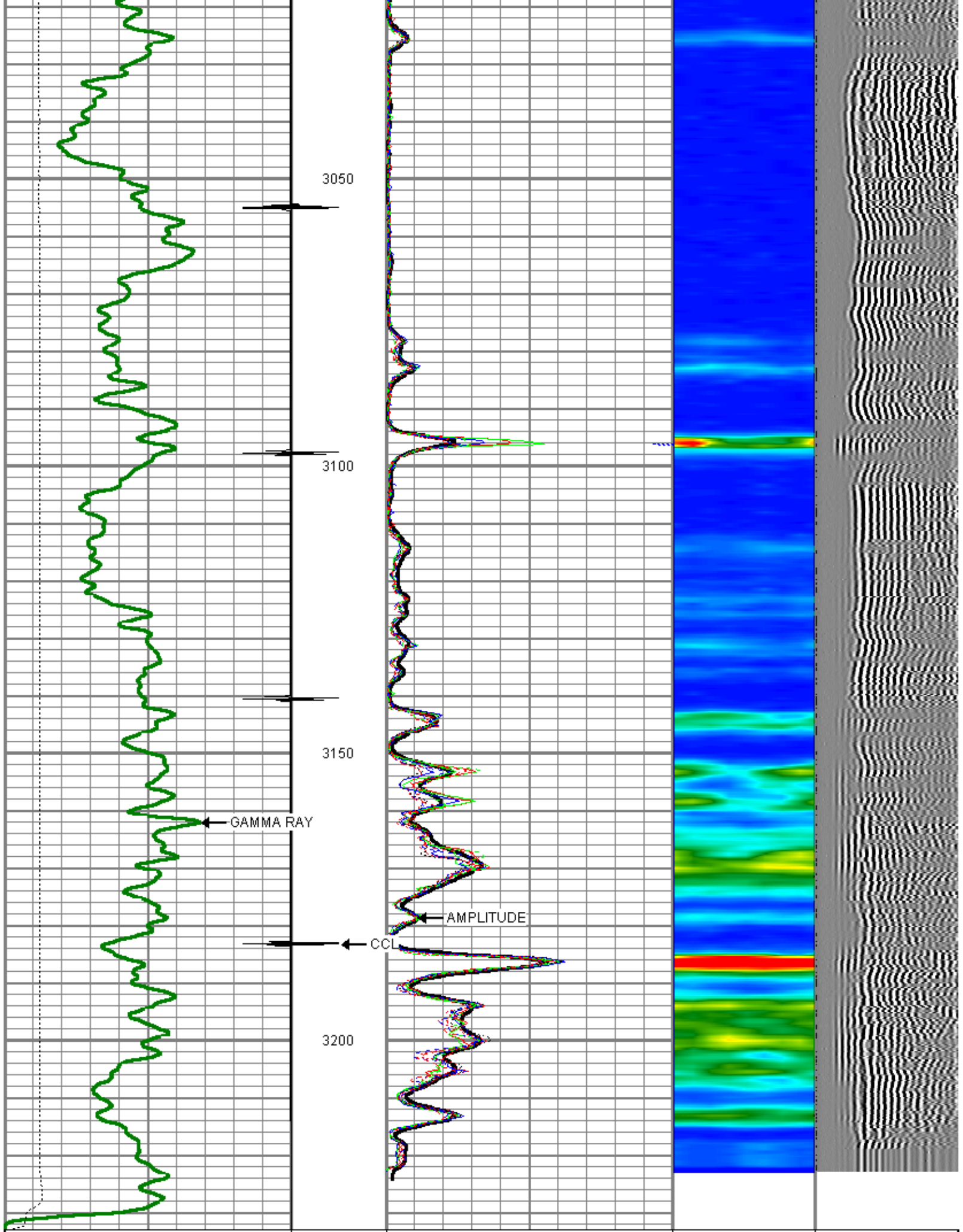















0	Gamma Ray (GAPI)	200	0	Amplitude (mV)	100	1	SECTORS	8	Variable Density
0	LTEN (%)	5000	0	TT25T (msec)	200	0		70	200



Sensor	Offset (ft)	Schematic	Description	Len (ft)	OD (in)	Wt (lb)
CCL	18.54		titan	1.00	1.69	2.00
			SNDX_CCL-SNDX_3_13_CCL (000001) CSS Gamma Ray/CCL (CCL Section)	1.92	3.13	11.02
			SONDEX	2.71	2.75	32.00
WVFS3FT	10.78		SNDX_RBT-007 (000001) Radial Bond Tool - Analog 3 1/8	9.47	3.13	140.00
WVFS1	10.78					
WVFS2	10.78					
WVFS3	10.78					
WVFS4	10.78					
WVFS5	10.78					
WVFS6	10.78					
WVFS7	10.78					
WVFS8	10.78					
WVFS5FT	9.78					
GR	2.03		SONDEX	2.71	2.75	32.00

