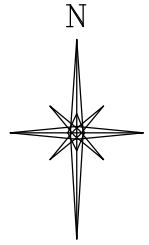
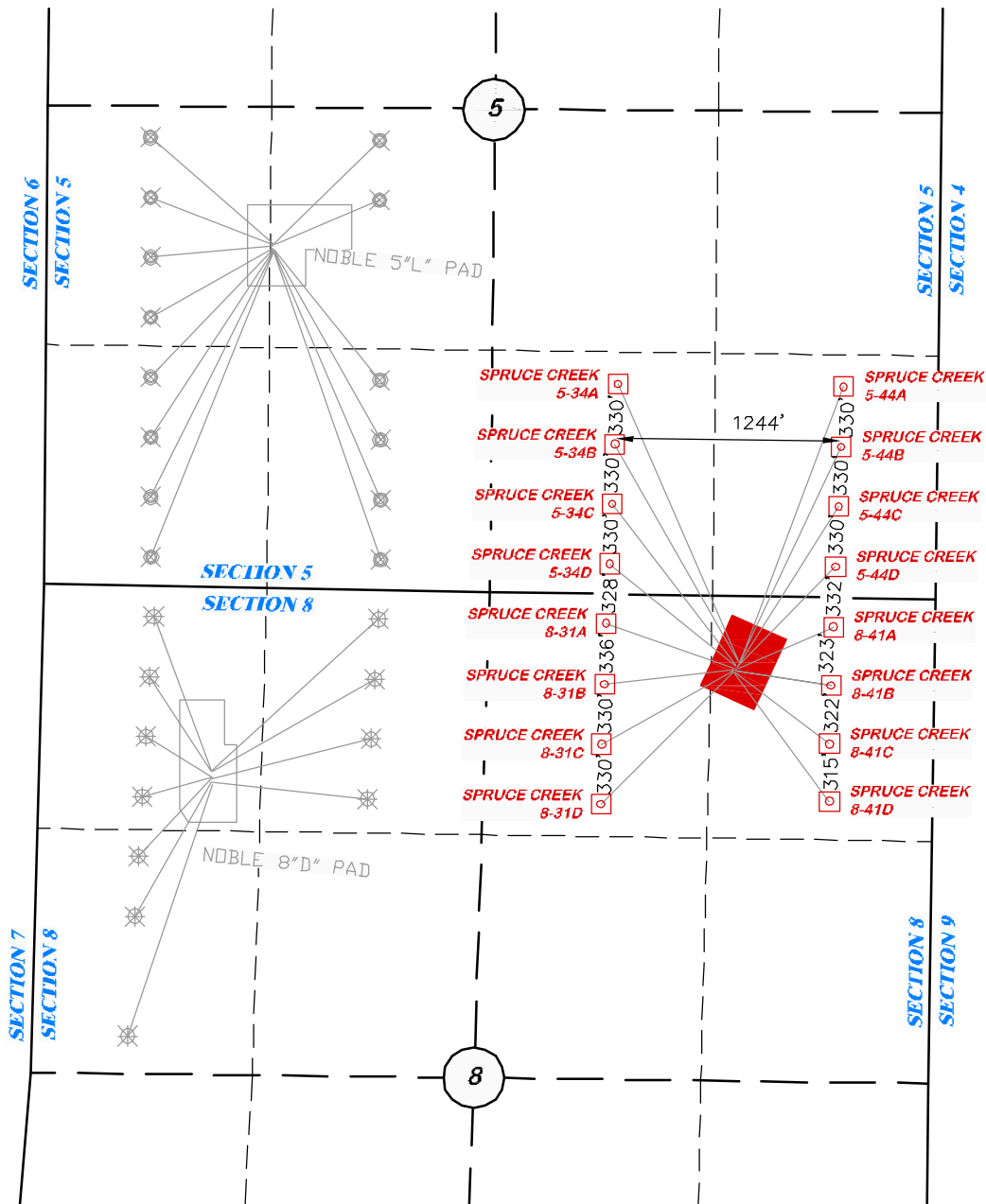


T7S



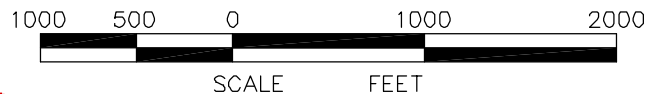
SCALE: 1" = 1000'



R 94 W

**LEGEND:**

- ✖ PROPOSED BOTTOM HOLE LOCATION FOR 8D PAD
- ✖ PROPOSED BOTTOM HOLE LOCATION FOR 5L PAD
- PROPOSED BOTTOM HOLE LOCATION FOR 20F PAD



8A PAD



**RIFFIN & ASSOCIATES, INC.**  
1414 ELK ST., ROCK SPRINGS, WY 82901

(307) 362-5028

**MULTI-WELL PLAN**

**NOBLE ENERGY, INC.**

**SPRUCE CREEK, 5-34A, 5-34B, 5-34C, 5-34D, 5-44A, 5-44B, 5-44C, 5-44D, 8-31A, 8-31B, 8-31C, 8-31D, 8-41A, 8-41B, 8-41C, & 8-41D, NENE, SECTION 8, T.7S., R94W, 6TH P.M., GARFIELD COUNTY, COLORADO**  
**PAD LOCATION IN THE NE 1/4 OF NE 1/4 OF SECTION 8, T. 7 S., R. 94 W., 6th P.M. GARFIELD COUNTY, COLORADO**

**DRAWN: 6/18/10 - DEH**

**SCALE: 1" = 1000'**

**REVISED: N/A**

**JOB No. 16975**

**EXHIBIT 4**