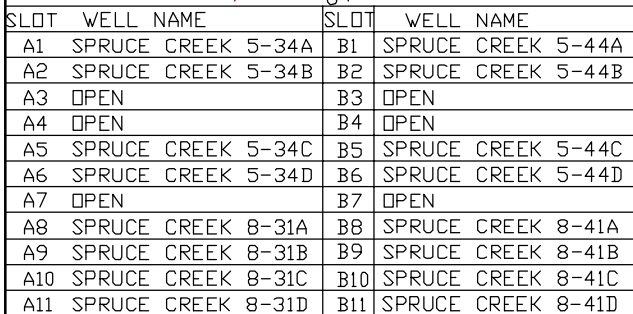


UNGRADED ELEVATION: 6454.6'
FINISHED ELEVATION: 6444.5'
APPROX. AREA OF DIST.: 4.3± ACRES



NOTE: THE EARTH QUANTITIES ON THIS DRAWING ARE ESTIMATED AND THE USE OF SAID QUANTITIES IS AT THE RESPONSIBILITY OF THE USER.

**SPRUCE CREEK, 5-34A, 5-34B, 5-34C, 5-34D, 5-44A, 5-44B,
5-44C, 5-44D, 8-31A, 8-31B, 8-31C, 8-31D, 8-41A, 8-41B,
8-41C, & 8-41D,**

ESTIMATED EARTHWORK

ESTIMATED EARTHWORK				
ITEM	CUT	FILL	TOPSOIL	EXCESS
PAD	33199 CY	29391 CY	3485 CY	323 CY
PIT	5750 CY			5750 CY
TOTALS	38949 CY	29391 CY	3485 CY	6073 CY



(307) 362-5028

DRAWN: 1/20/09 - WWG

SCALE: 1" = 100'

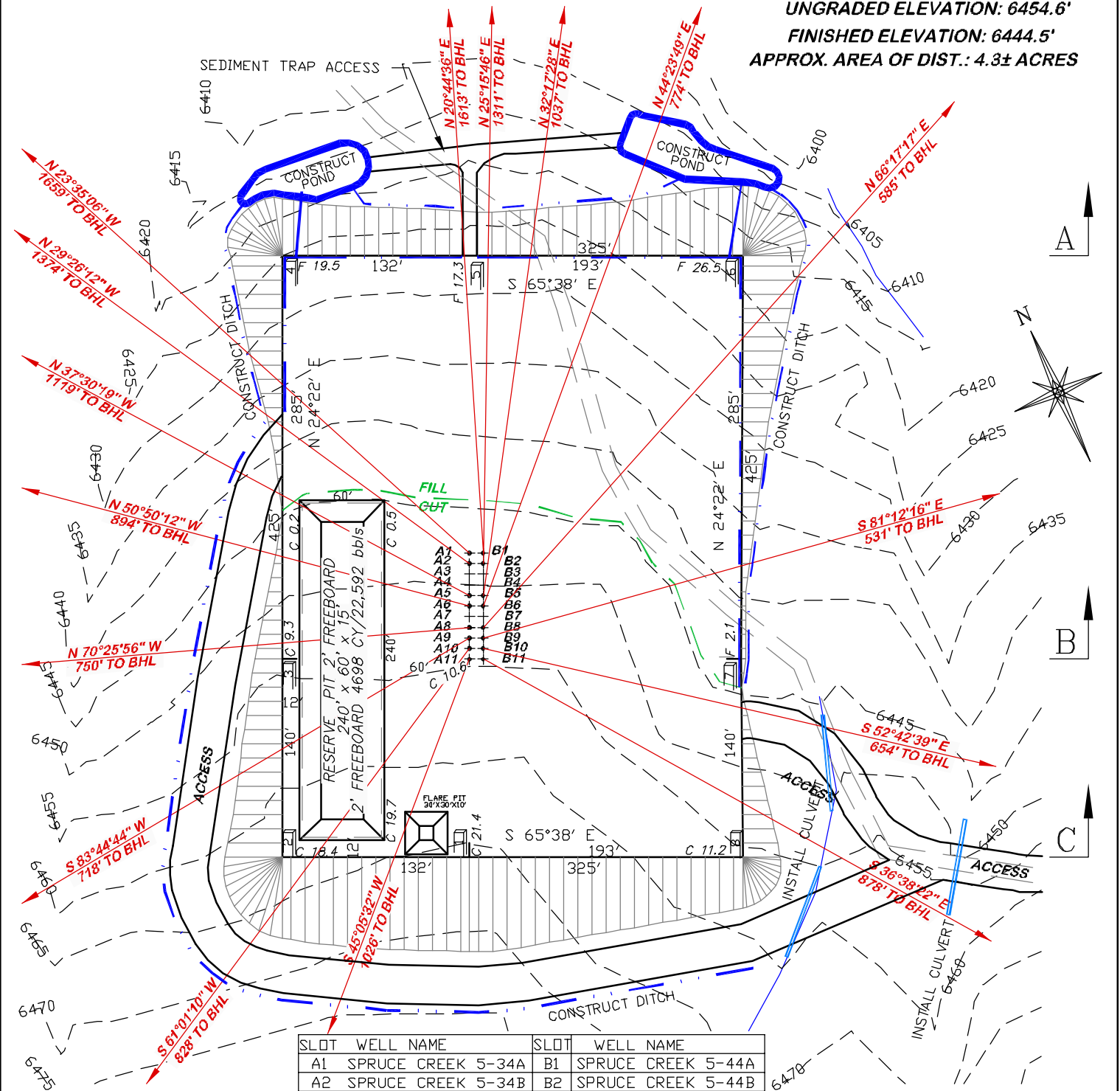
REVISED: 6/18/10 - DEH

DRG JOB No. 16975

UPDATE TO NEW COGCC RULES

EXHIBIT 2

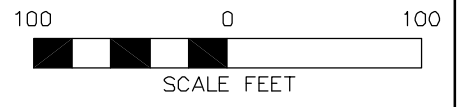
UNGRADED ELEVATION: 6454.6'
 FINISHED ELEVATION: 6444.5'
 APPROX. AREA OF DIST.: 4.3± ACRES



**BEFORE DIGGING
 CALL FOR
 UTILITY LINE LOCATION**
 NOTE: THE EARTH QUANTITIES ON
 THIS DRAWING ARE ESTIMATED
 AND THE USE OF IS AT THE
 RESPONSIBILITY OF THE USER.

SLOT	WELL NAME	SLOT	WELL NAME
A1	SPRUCE CREEK 5-34A	B1	SPRUCE CREEK 5-44A
A2	SPRUCE CREEK 5-34B	B2	SPRUCE CREEK 5-44B
A3	OPEN	B3	OPEN
A4	OPEN	B4	OPEN
A5	SPRUCE CREEK 5-34C	B5	SPRUCE CREEK 5-44C
A6	SPRUCE CREEK 5-34D	B6	SPRUCE CREEK 5-44D
A7	OPEN	B7	OPEN
A8	SPRUCE CREEK 8-31A	B8	SPRUCE CREEK 8-41A
A9	SPRUCE CREEK 8-31B	B9	SPRUCE CREEK 8-41B
A10	SPRUCE CREEK 8-31C	B10	SPRUCE CREEK 8-41C
A11	SPRUCE CREEK 8-31D	B11	SPRUCE CREEK 8-41D

NOTE: SEE PAD GRADING AND
 EROSION & SEDIMENT
 CONTROL PLAN DESIGNED BY
 URS ENGINEERS.



8A PAD

DRG RIFFIN & ASSOCIATES, INC.
 (307) 362-5028 1414 ELK ST., ROCK SPRINGS, WY 82901

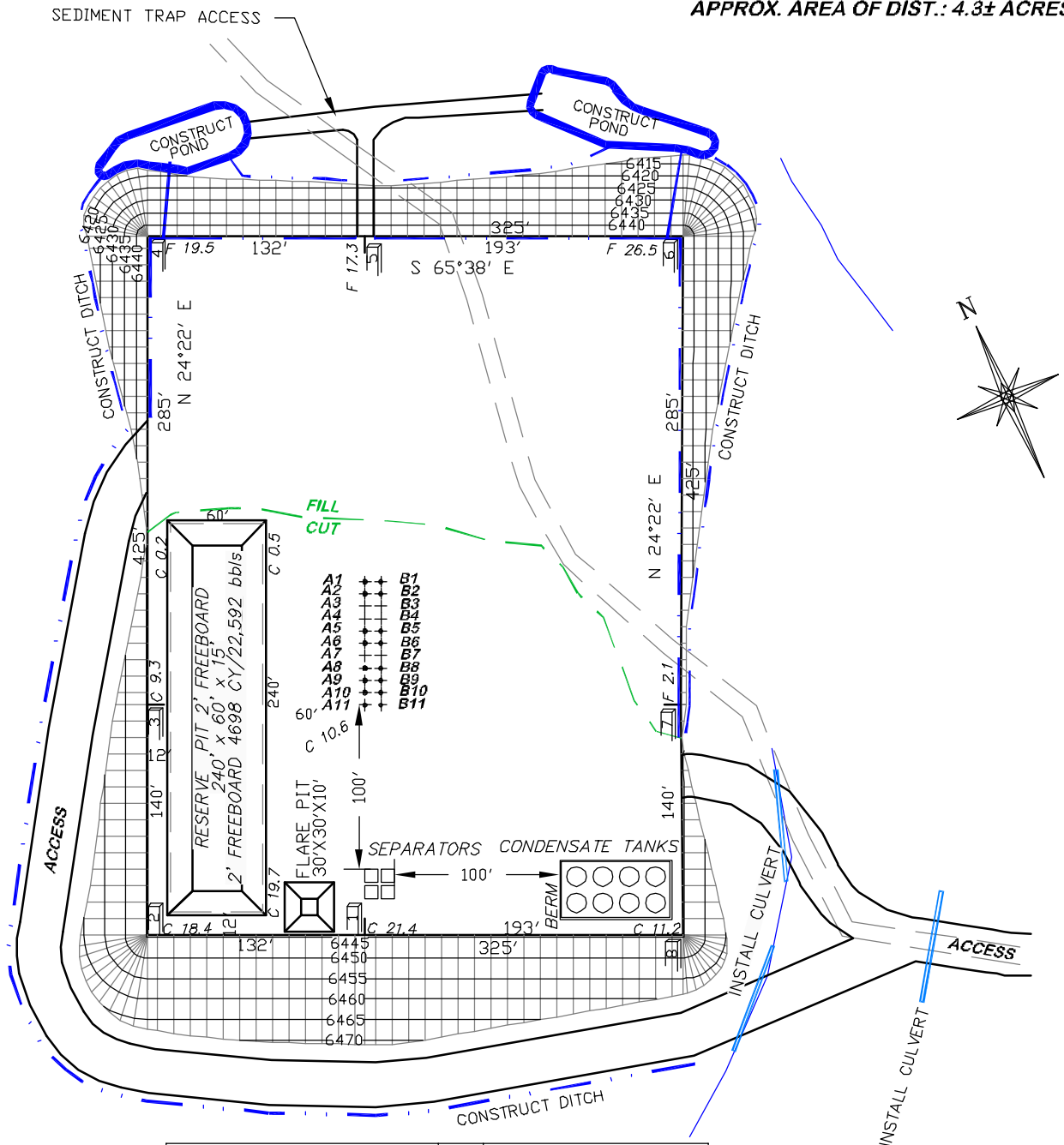
DRAWN: 1/20/09 - WWG	SCALE: 1" = 100'
REVISED: 6/18/10 - DEH	DRG JOB No. 16975
UPDATE TO NEW COGCC RULES	EXHIBIT 2A

CONSTRUCTION LAYOUT DRAWING 2 OF 5

NOBLE ENERGY, INC.
SPRUCE CREEK, 5-34A, 5-34B, 5-34C, 5-34D, 5-44A,
5-44B, 5-44C, 5-44D, 8-31A, 8-31B, 8-31C, 8-31D, 8-41A,
8-41B, 8-41C, & 8-41D,
NENE, SECTION 8, T.7S., R.94W, 6TH P.M.
GARFIELD COUNTY, COLORADO

DESIGN CONTOURS

UNGRADED ELEVATION: 6454.6'
FINISHED ELEVATION: 6444.5'
APPROX. AREA OF DIST.: 4.3± ACRES



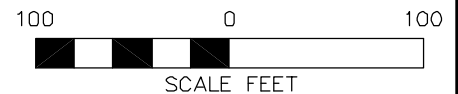
**BEFORE DIGGING
CALL FOR
UTILITY LINE LOCATION**

NOTE: THE EARTH QUANTITIES ON
THIS DRAWING ARE ESTIMATED
AND THE USE OF IS AT THE
RESPONSIBILITY OF THE USER.

SLOT	WELL NAME	SLOT	WELL NAME
A1	SPRUCE CREEK 5-34A	B1	SPRUCE CREEK 5-44A
A2	SPRUCE CREEK 5-34B	B2	SPRUCE CREEK 5-44B
A3	OPEN	B3	OPEN
A4	OPEN	B4	OPEN
A5	SPRUCE CREEK 5-34C	B5	SPRUCE CREEK 5-44C
A6	SPRUCE CREEK 5-34D	B6	SPRUCE CREEK 5-44D
A7	OPEN	B7	OPEN
A8	SPRUCE CREEK 8-31A	B8	SPRUCE CREEK 8-41A
A9	SPRUCE CREEK 8-31B	B9	SPRUCE CREEK 8-41B
A10	SPRUCE CREEK 8-31C	B10	SPRUCE CREEK 8-41C
A11	SPRUCE CREEK 8-31D	B11	SPRUCE CREEK 8-41D

8A PAD

NOTE: SEE PAD GRADING AND
EROSION & SEDIMENT
CONTROL PLAN DESIGNED BY
URS ENGINEERS.



RIFFIN & ASSOCIATES, INC.

(307) 362-5028

1414 ELK ST., ROCK SPRINGS, WY 82901

DRAWN: 1/20/09 - WWG

SCALE: 1" = 100'

REVISED: 6/18/10 - DEH

DRG JOB No. 16975

UPDATE TO NEW COGCC RULES

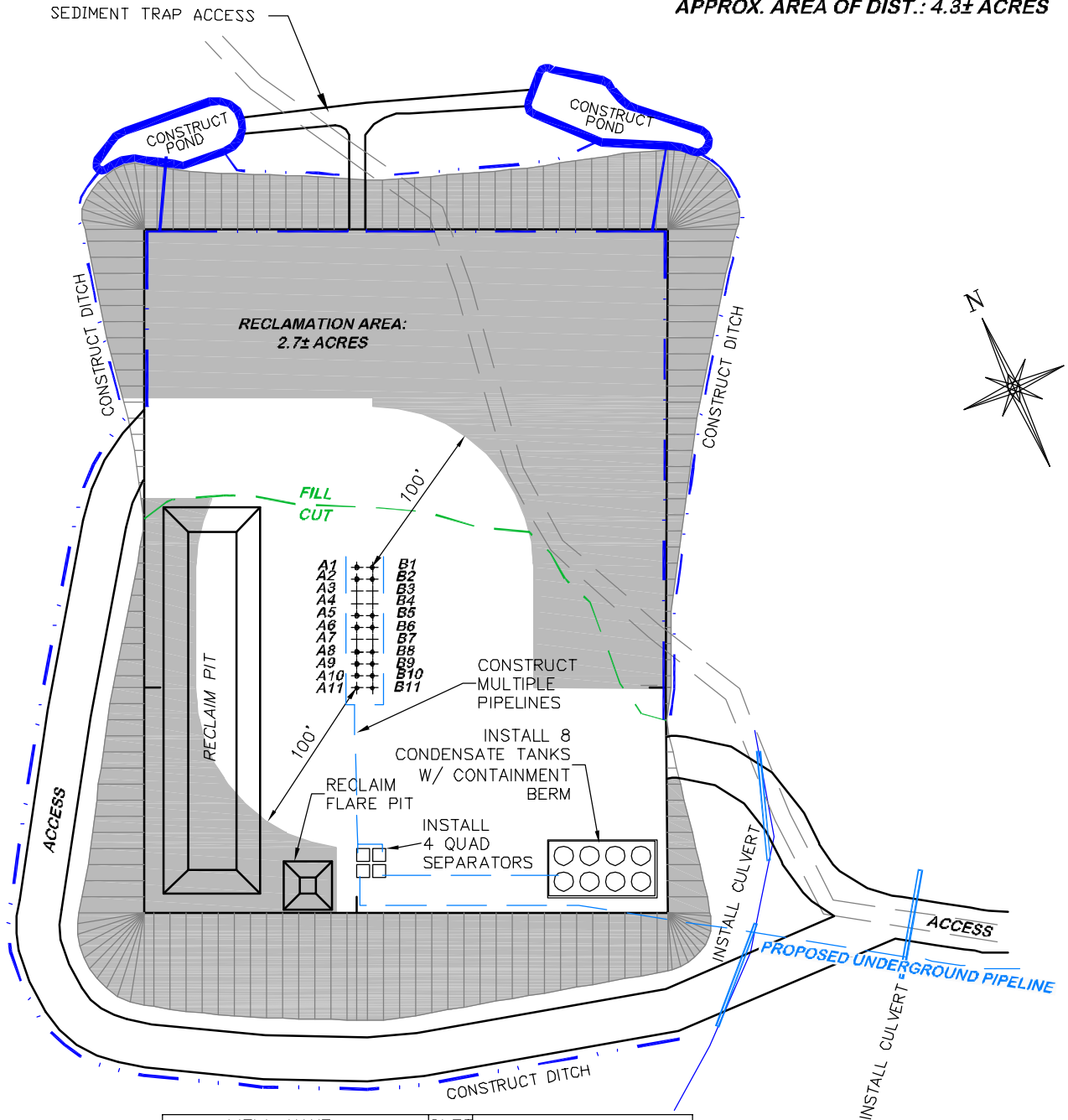
EXHIBIT 2B

CONSTRUCTION LAYOUT DRAWING 3 OF 5

NOBLE ENERGY, INC.
SPRUCE CREEK, 5-34A, 5-34B, 5-34C, 5-34D, 5-44A,
5-44B, 5-44C, 5-44D, 8-31A, 8-31B, 8-31C, 8-31D, 8-41A,
8-41B, 8-41C, & 8-41D,
NENE, SECTION 8, T.7S., R.94W, 6TH P.M.
GARFIELD COUNTY, COLORADO

RECLAMATION PLAN

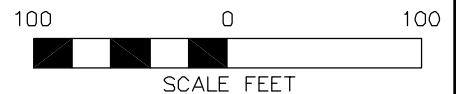
UNGRADED ELEVATION: 6454.6'
FINISHED ELEVATION: 6444.5'
APPROX. AREA OF DIST.: 4.3± ACRES



SLOT	WELL NAME	SLOT	WELL NAME
A1	SPRUCE CREEK 5-34A	B1	SPRUCE CREEK 5-44A
A2	SPRUCE CREEK 5-34B	B2	SPRUCE CREEK 5-44B
A3	OPEN	B3	OPEN
A4	OPEN	B4	OPEN
A5	SPRUCE CREEK 5-34C	B5	SPRUCE CREEK 5-44C
A6	SPRUCE CREEK 5-34D	B6	SPRUCE CREEK 5-44D
A7	OPEN	B7	OPEN
A8	SPRUCE CREEK 8-31A	B8	SPRUCE CREEK 8-41A
A9	SPRUCE CREEK 8-31B	B9	SPRUCE CREEK 8-41B
A10	SPRUCE CREEK 8-31C	B10	SPRUCE CREEK 8-41C
A11	SPRUCE CREEK 8-31D	B11	SPRUCE CREEK 8-41D

8A PAD

NOTE: SEE PAD GRADING AND
EROSION & SEDIMENT
CONTROL PLAN DESIGNED BY
URS ENGINEERS.



**BEFORE DIGGING
CALL FOR
UTILITY LINE LOCATION**

NOTE: THE EARTH QUANTITIES ON
THIS DRAWING ARE ESTIMATED
AND THE USE OF IS AT THE
RESPONSIBILITY OF THE USER.



DRG RIFFIN & ASSOCIATES, INC.
1414 ELK ST., ROCK SPRINGS, WY 82901

(307) 362-5028

DRAWN: 6/18/10 - DEH

SCALE: 1" = 100'

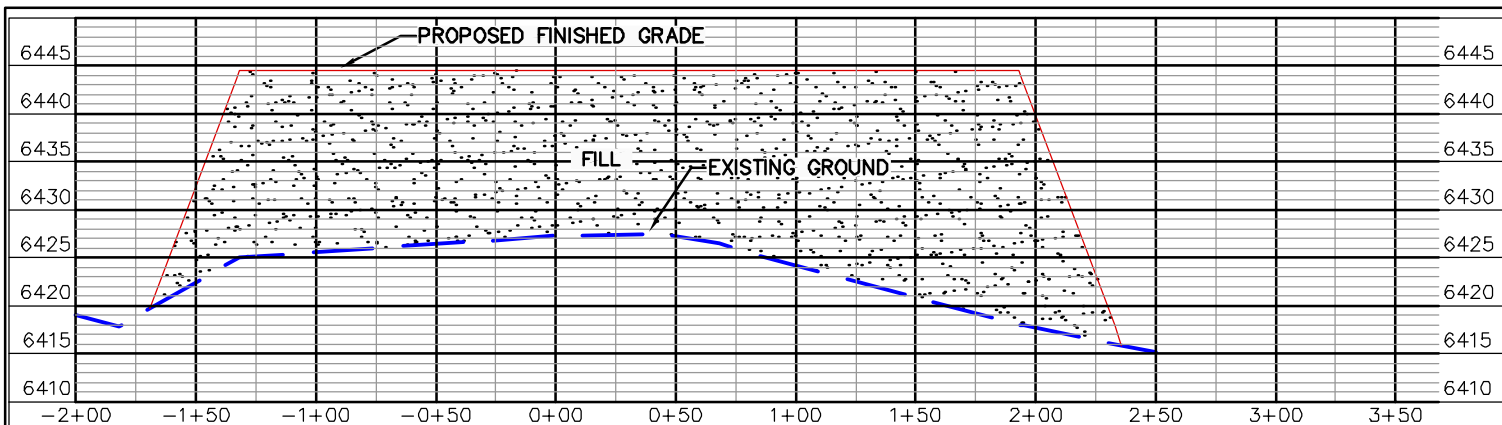
REVISED: N/A

DRG JOB No. 16975

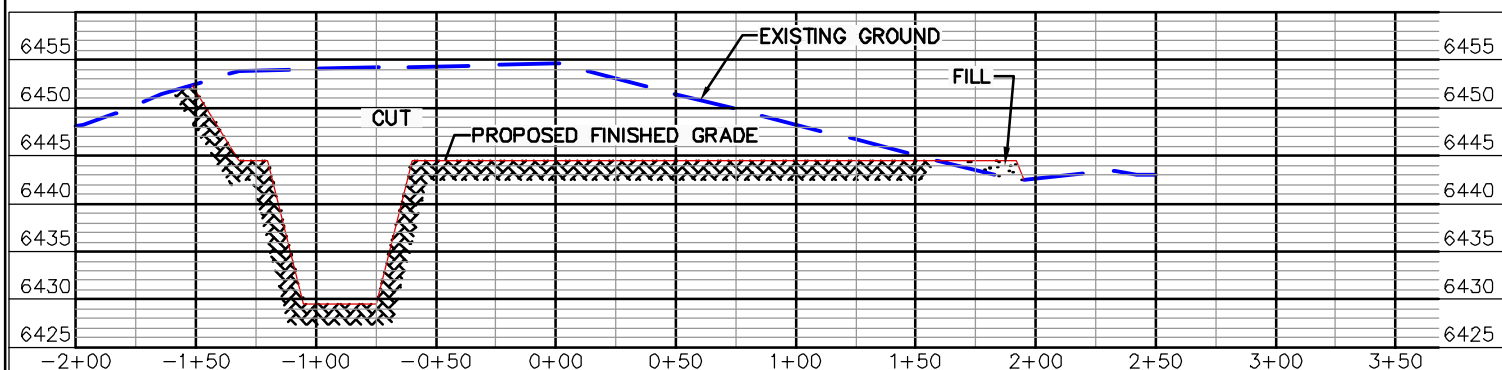
EXHIBIT 2C

CONSTRUCTION LAYOUT DRAWING 4 OF 5

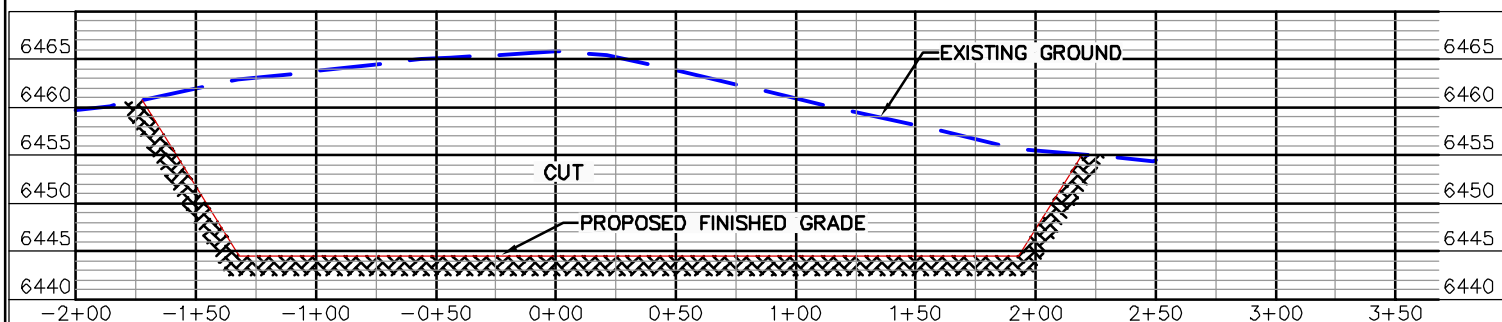
NOBLE ENERGY, INC.
SPRUCE CREEK, 5-34A, 5-34B, 5-34C, 5-34D, 5-44A,
5-44B, 5-44C, 5-44D, 8-31A, 8-31B, 8-31C, 8-31D, 8-41A,
8-41B, 8-41C, & 8-41D,
NENE, SECTION 8, T.7S., R.94W, 6TH P.M.
GARFIELD COUNTY, COLORADO



CROSS SECTION A



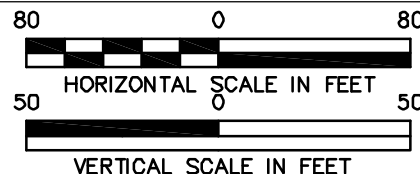
CROSS SECTION B



CROSS SECTION C

FINISHED ELEVATION = 6444.5

8A PAD



DRG RIFFIN & ASSOCIATES, INC.
 (307) 362-5028 1414 ELK ST., ROCK SPRINGS, WY 82901

CONSTRUCTION LAYOUT DRAWING 5 OF 5

NOBLE ENERGY, INC.
SPRUCE CREEK, 5-34A, 5-34B, 5-34C, 5-34D, 5-44A,
5-44B, 5-44C, 5-44D, 8-31A, 8-31B, 8-31C, 8-31D, 8-41A,
8-41B, 8-41C, & 8-41D,
NENE, SECTION 8, T.7S., R94W, 6TH P.M.
GARFIELD COUNTY, COLORADO

DRAWN: 9/12/08 - RAB

HORZ. 1" = 80' VERT. 1" = 50'

REVISED: 6/18/10 - DEH

DRG JOB No. 16975

UPDATE TO NEW COGCC RULES

EXHIBIT 3