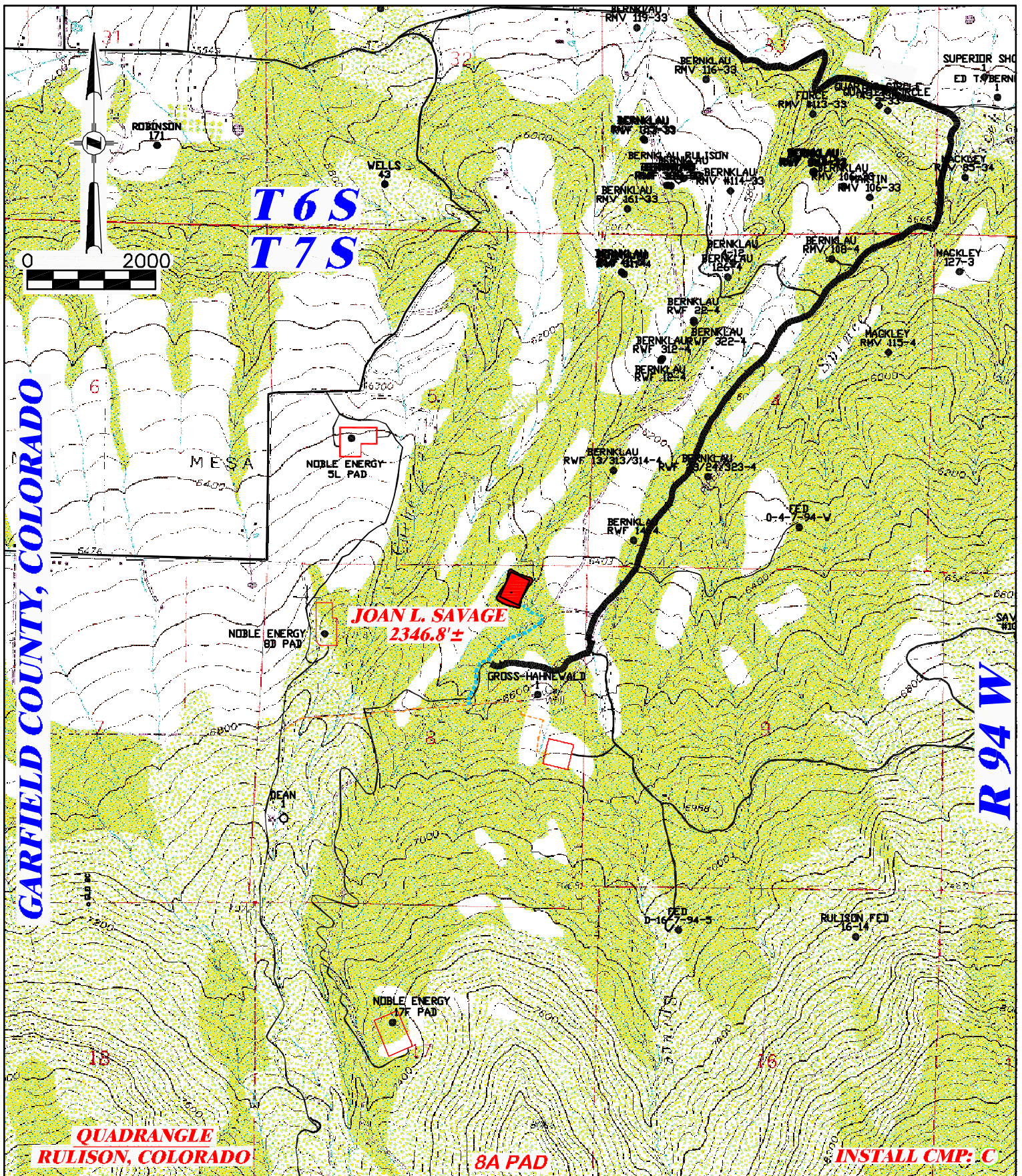
 DRG RIFFIN & ASSOCIATES, INC. (307) 362-5028 1414 ELK ST., ROCK SPRINGS, WY 82901		EXISTING/PROPOSED ACCESS MAP NOBLE ENERGY, INC. SPRUCE CREEK, 5-34A, 5-34B, 5-34C, 5-34D, 5-44A, 5-44B, 5-44C, 5-44D, 8-31A, 8-31B, 8-31C, 8-31D, 8-41A, 8-41B, 8-41C, & 8-41D, NENE, SECTION 8, T.7S., R.94W, 6TH P.M. GARFIELD COUNTY, COLORADO	
		PROPOSED ACCESS LENGTH: 2526.1' ± PROPOSED ROAD ----- EXISTING ROAD —————	
DRAWN: 1/20/09 - WWG.	SCALE: 1" = 2000'		
REVISED: 6/18/10 - DEH	DRG JOB No. 16975		
MISC. COGCC REQ. CHANGES	EXHIBIT/TOPO MAP 8		



DRG RIFFIN & ASSOCIATES, INC.
1414 ELK ST., ROCK SPRINGS, WY 82901

(307) 362-5028

DRAWN: 6/18/10 - DEH

REVISED: N/A

SCALE: 1" = 2000'

DRG JOB No. 16975

EXHIBIT/TOPO MAP 8A

PROPOSED PIPELINE MAP

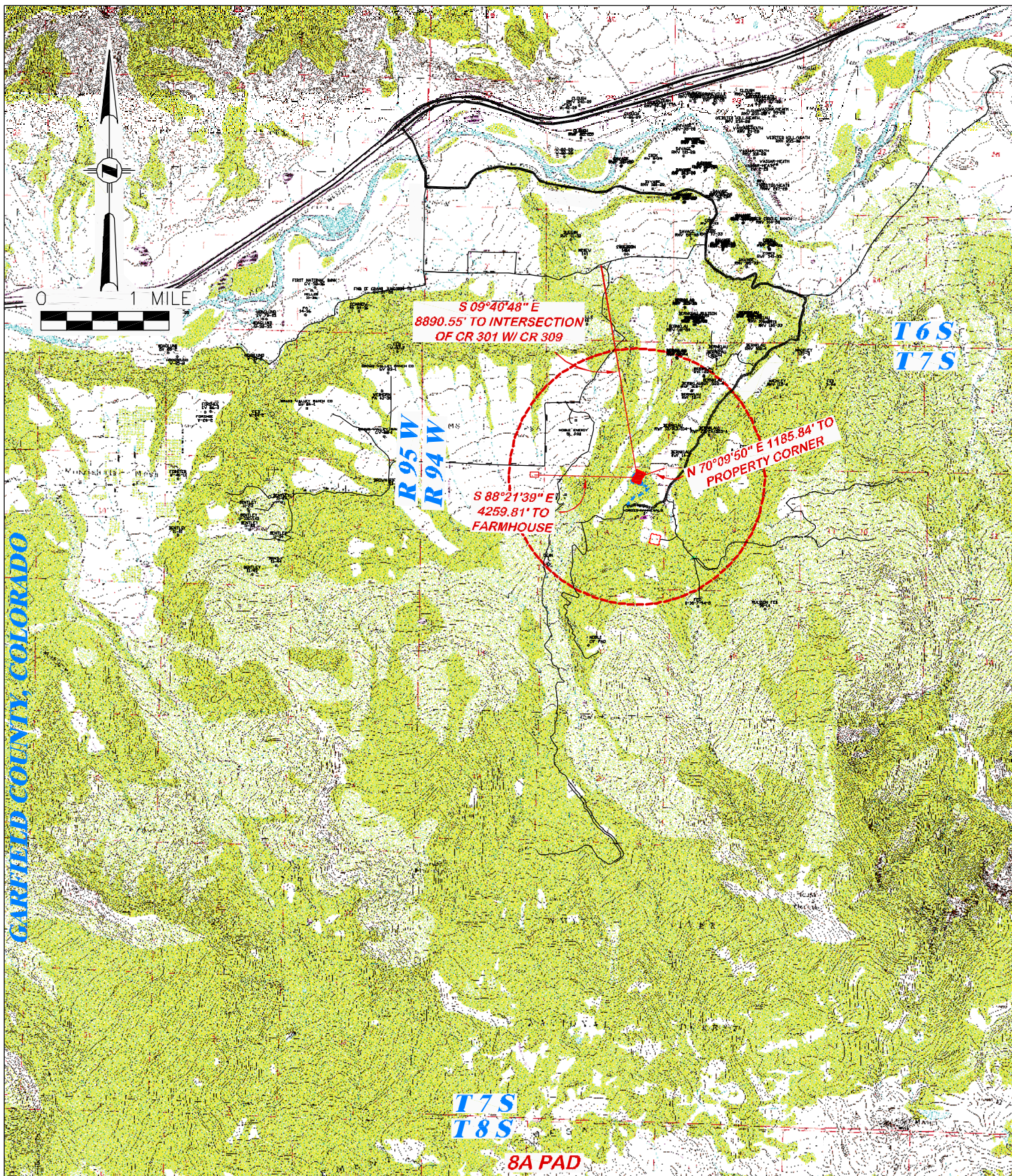
NOBLE ENERGY, INC.

SPRUCE CREEK, 5-34A, 5-34B, 5-34C, 5-34D, 5-44A, 5-44B, 5-44C, 5-44D, 8-31A, 8-31B, 8-31C, 8-31D, 8-41A, 8-41B, 8-41C, & 8-41D, NENE, SECTION 8, T7S., R94W, 6TH P.M. GARFIELD COUNTY, COLORADO

PROPOSED PIPELINE LENGTH 2346.8' ±

PROPOSED PIPELINE - - - - -

EXISTING ROAD - - - - -



RIFFIN & ASSOCIATES, INC.
1414 ELK ST., ROCK SPRINGS, WY 82901

(307) 362-5028

DRAWN: 1/20/09 - WWG.

SCALE: 1" = MILE

REVISED: 6/18/10 - DEH

DRG JOB No. 16975

MISC. COGCC REQ. CHANGES

EXHIBIT/TOPO 9

ACCESS ROAD MAP **NOBLE ENERGY, INC.**

**SPRUCE CREEK, 5-34A, 5-34B, 5-34C, 5-34D, 5-44A, 5-44B,
5-44C, 5-44D, 8-31A, 8-31B, 8-31C, 8-31D, 8-41A, 8-41B,
8-41C, & 8-41D,**

**NENE, SECTION 8, T.7S., R.94W, 6TH P.M.
GARFIELD COUNTY, COLORADO**

PROPOSED ROAD - - - - -

EXISTING ROAD - - - - -