



CEMENT BOND LOG

Mesa Wireline

Company	ENCANA OIL & GAS (USA) INC		
Well	KUNER 1-25		
Field	WATTENBERG		
County	WELD		
State	COLORADO		
Company ENCANA OIL & GAS (USA) INC		Well KUNER 1-25	
Field WATTENBERG		County WELD State COLORADO	
Location:	API #: 05-123-30815-0000		Other Services NONE
SHL: 1257' FNL & 308' FEL BHL: 1308' FNL & 1311' FEL SEC. 25 TWP. 5N RGE. 64W			
Permanent Datum GROUND LEVEL Elevation 4586'			
Log Measured From KELLY BUSHING = 12'			
Drilling Measured From KELLY BUSHING			Elevation K.B. 4598' D.F. 4697' G.L. 4586'

Date	30 JULY 2011									
Run Number	ONE									
Depth Driller	7373'									
Depth Logger	7354'									
Bottom Logged Interval	7354'									
Top Log Interval	4250'									
Open Hole Size	4.5"									
Type Fluid	WATER									
Density / Viscosity	~8.3#									
Max. Recorded Temp.	255 DEG F									
Estimated Cement Top	4558'									
Time Well Ready	N/A									
Time Logger on Bottom	N/A									
Equipment Number	10701 PRD01									
Location	AULT.CO									
Recorded By	V.FULLER									
Witnessed By	T.MAJORS									
Borehole Record										
Run Number	Bit	From	To	Size	Tubing Record			Weight	From	To
ONE	12.25"	0'	820'							
TWO	7.875"	0'	7390'							
Casing Record	Size	Wt/Lb			Top			Bottom		
Surface String	8.625"	24#			0'			800'		
Prot. String										
Production String	4.5"	11.6#			0'			7373'		
Liner										

<<< Fold Here >>>

All interpretations are opinions based on inferences from electrical or other measurements and we cannot and do not guarantee the accuracy or correctness of any interpretation, and we shall not, except in the case of gross or willful negligence on our part, be liable or responsible for any loss, costs, damages, or expenses incurred or sustained by anyone resulting from any interpretation made by any of our officers, agents or employees. These interpretations are also subject to our general terms and conditions set out in our current Price Schedule.

Comments

LOG NOT CORRALATED TO ANY OTHER LOG
SHORT JOINT 6438'-6460'

WE APPRECIATE YOUR BUSINESS, MESA WIRELINE LLC, GRAND JUNCTION CO. (970) 257-0458



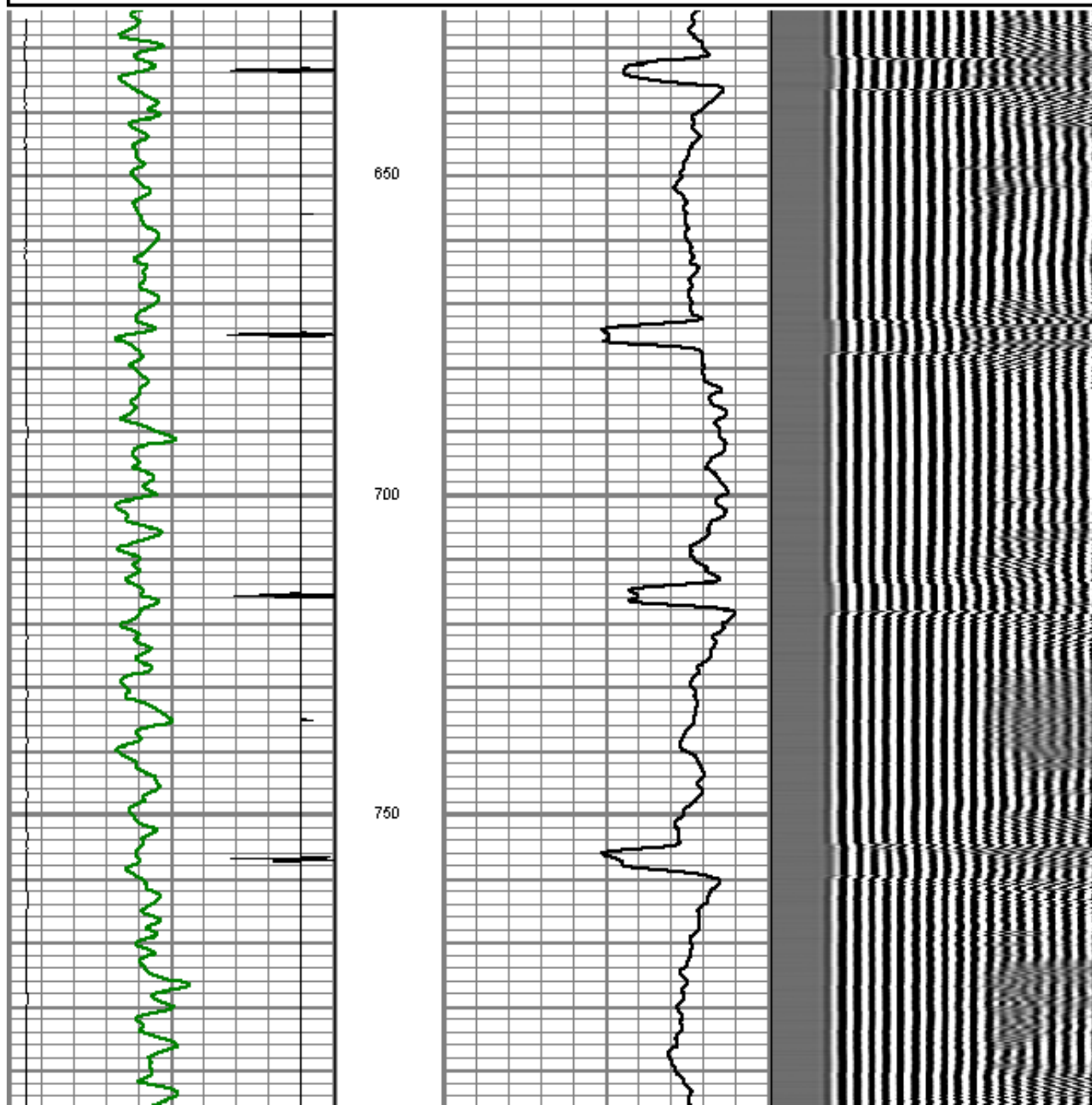
TOP REPEAT PASS

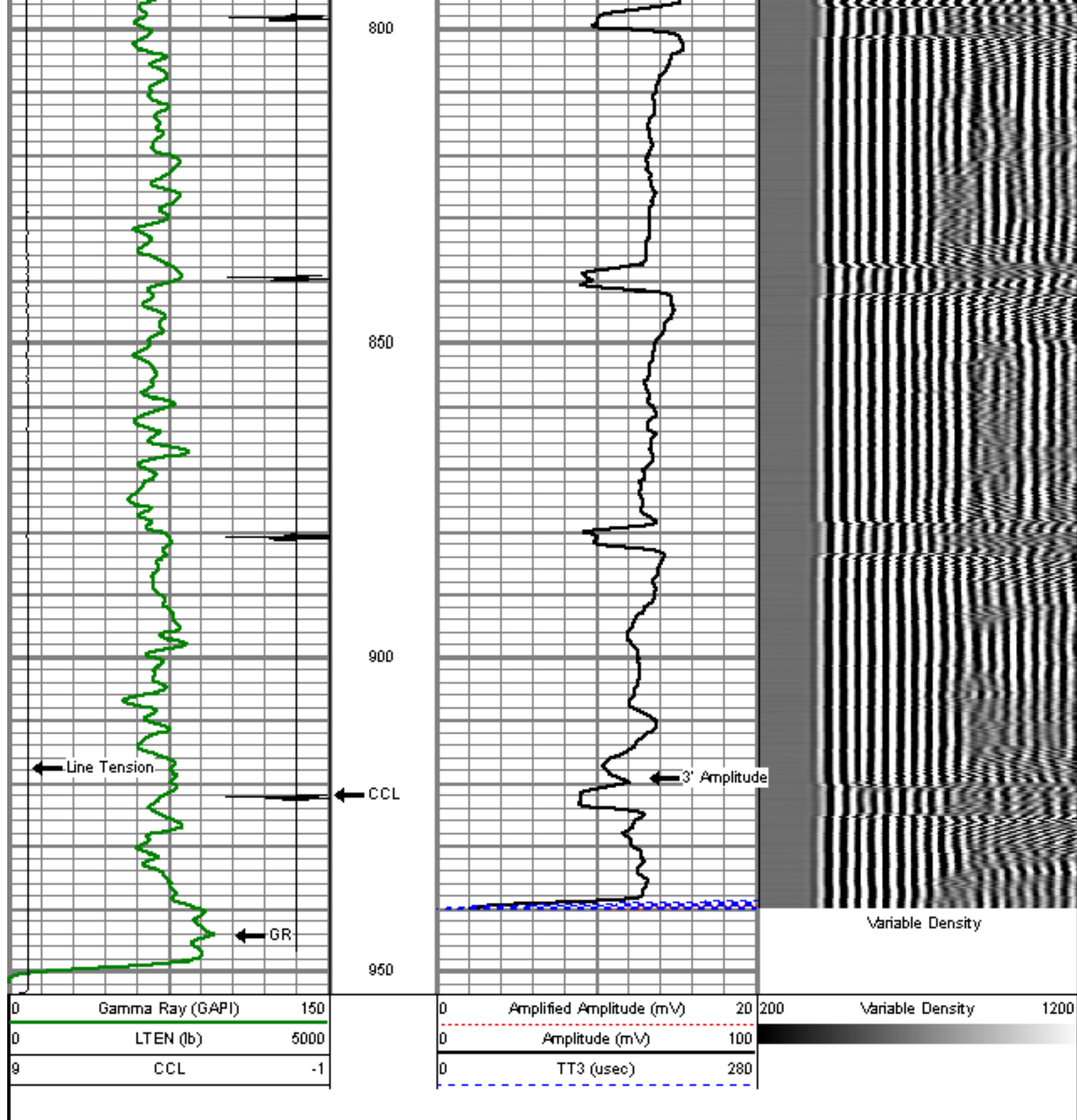
Database File: kuner 1-25.db
Dataset Pathname: pass9
Presentation Format: dcbl_prb
Dataset Creation: Sat Jul 30 09:47:18 2011 by Log Std Casedhole 09061
Charted by: Depth in Feet scaled 1:240

0	Gamma Ray (GAPI)	150
0	LTEN (lb)	5000
9	CCL	-1

0	Amplified Amplitude (mV)	20
0	Amplitude (mV)	100
0	TT3 (usec)	280

200 Variable Density 1200





MAIN PASS

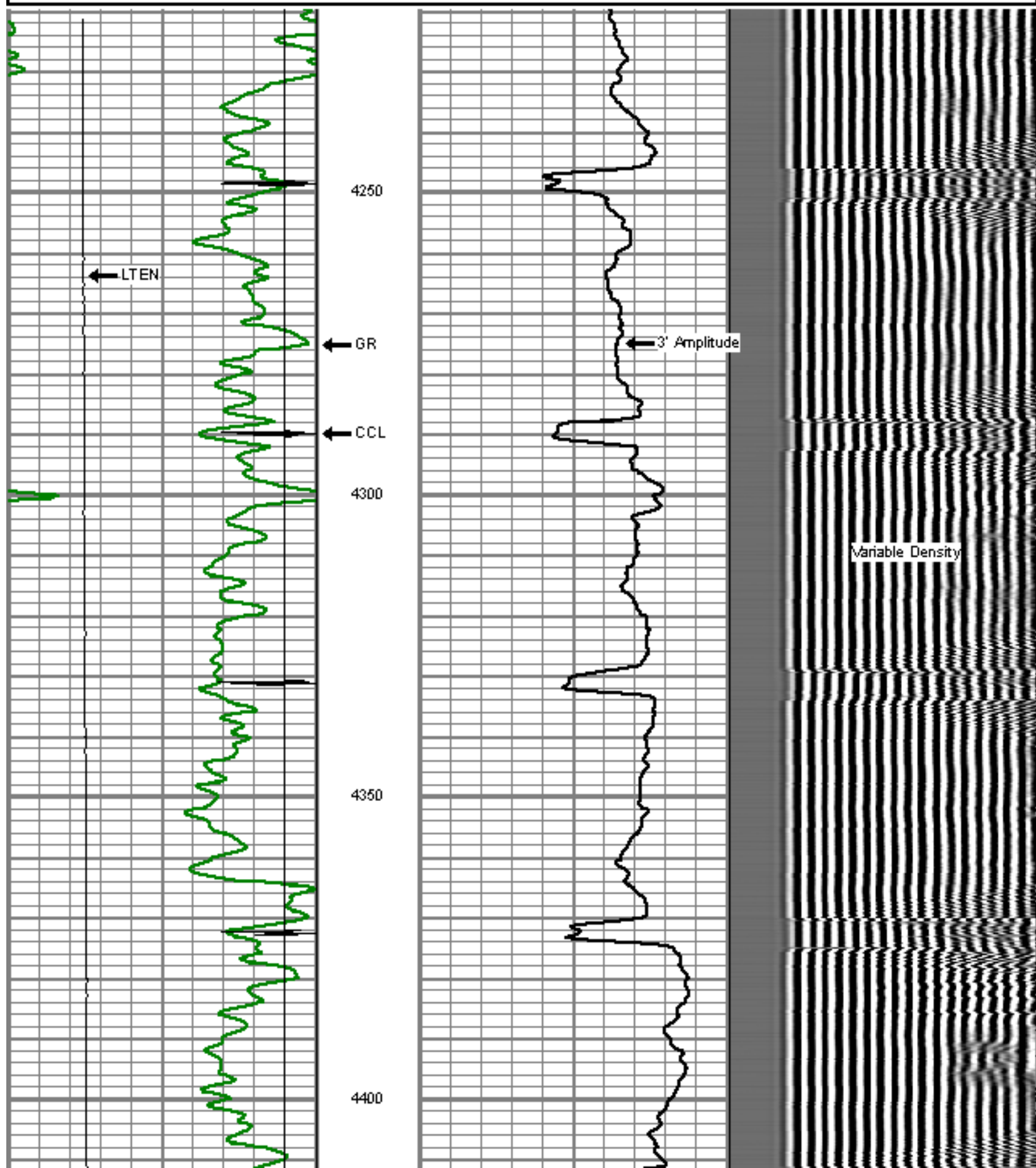
5" = 100'

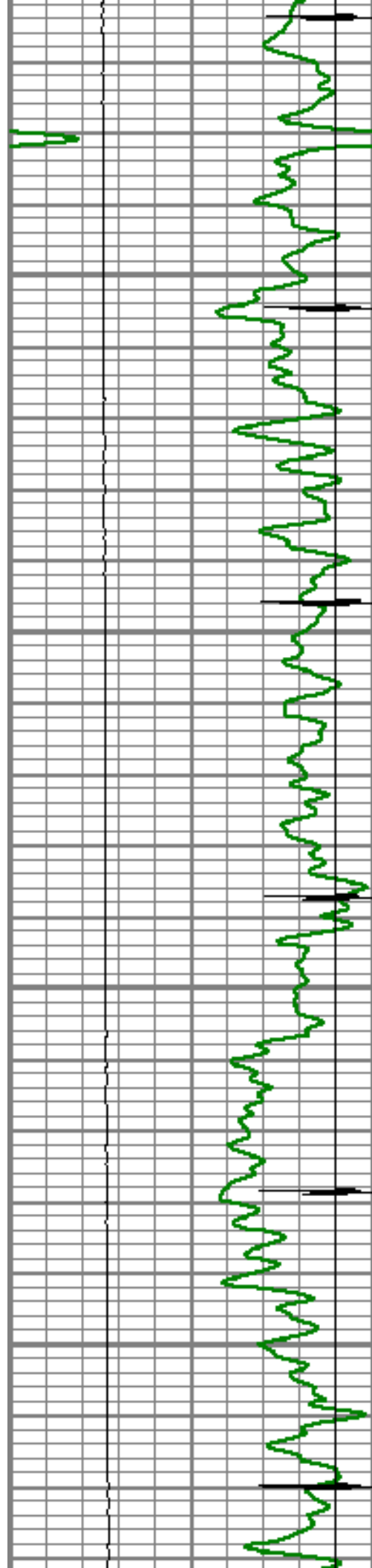
Database File: kuner 1-25.db
 Dataset Pathname: pass7
 Presentation Format: dcbl_prb
 Dataset Creation: Sat Jul 30 08:19:46 2011 by Log Std Casedhole 09061

0	Gamma Ray (GAPI)	150
0	LTEN (lb)	5000
9	CCL	-1

0	Amplified Amplitude (mV)	20
0	Amplitude (mV)	100
0	TT3 (usec)	280

200	Variable Density	1200
-----	------------------	------





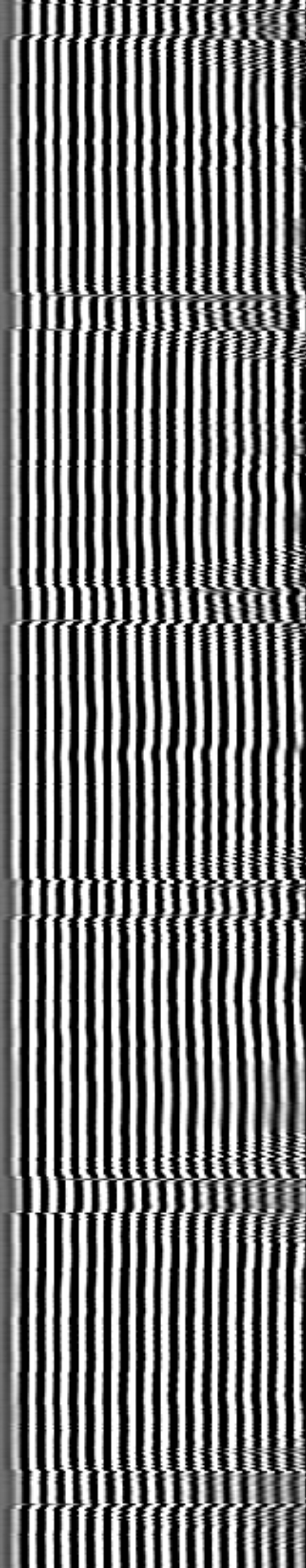
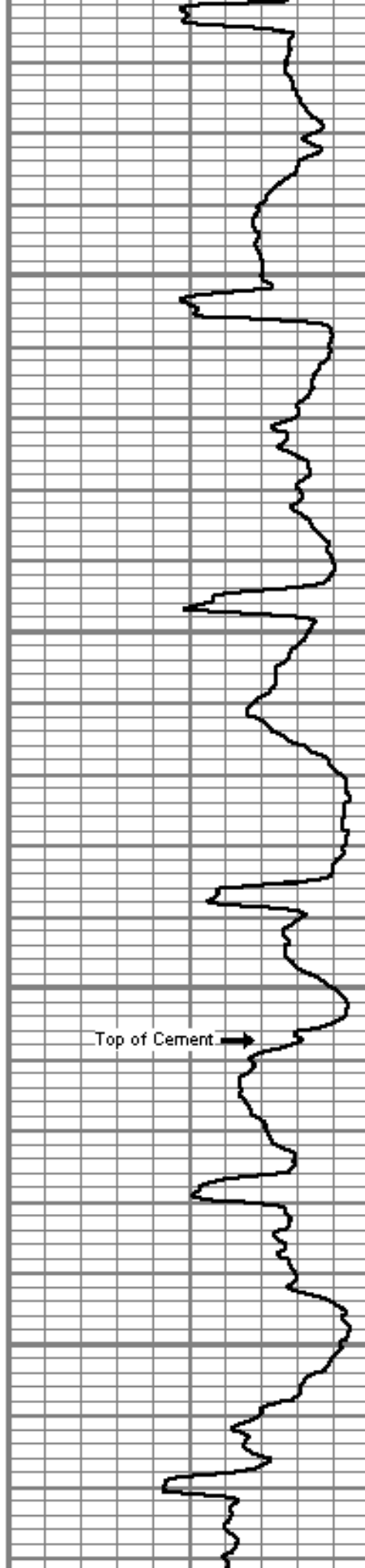
4450

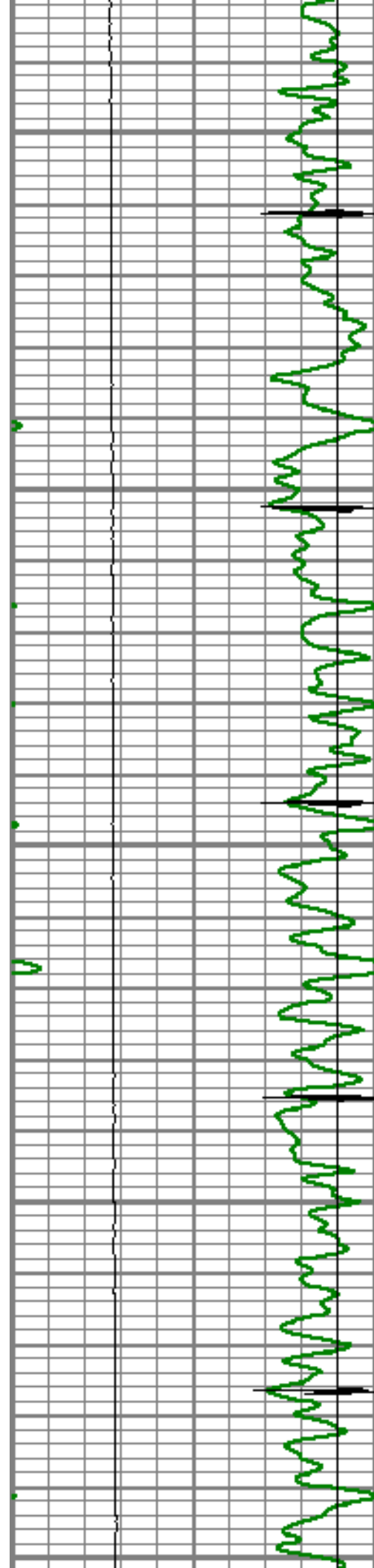
4500

4550

4600

Top of Cement →





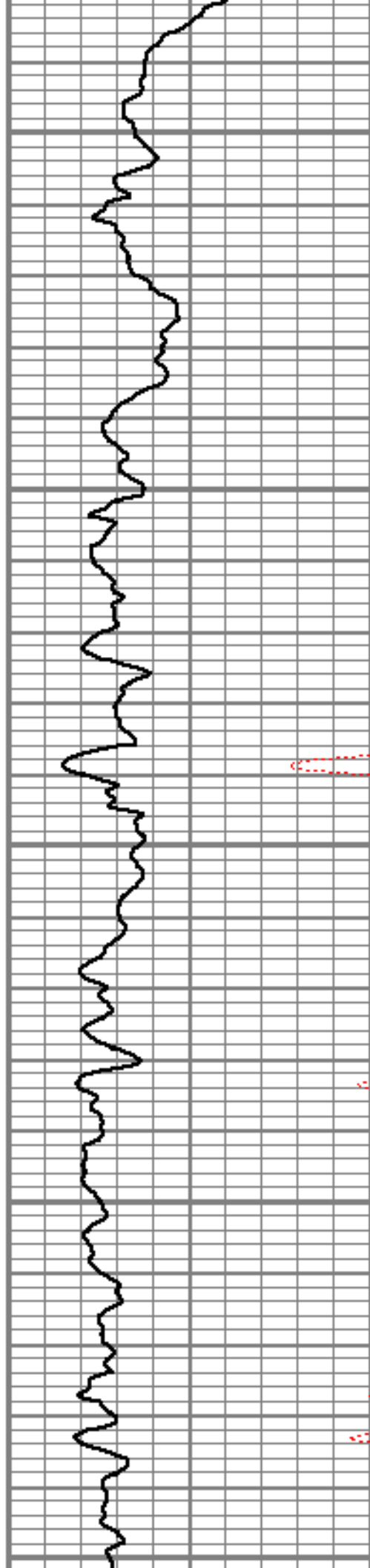
4650

4700

4750

4800

4850



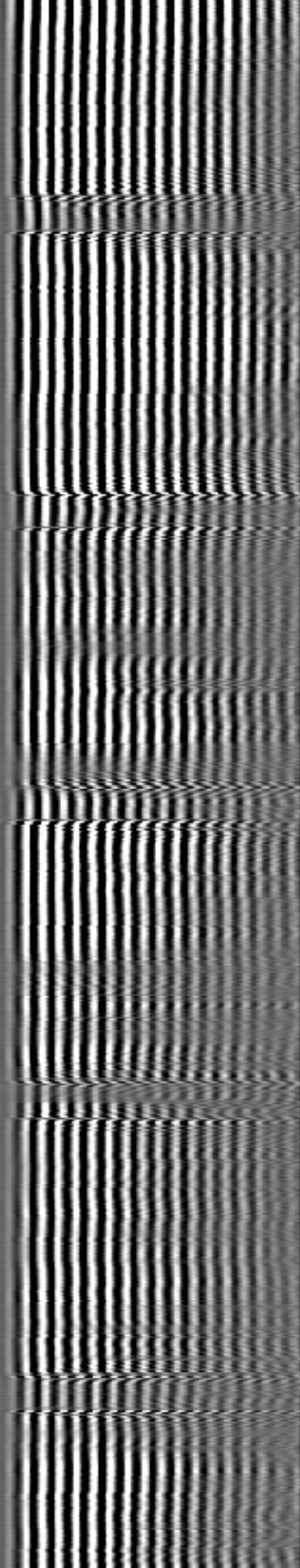
4650

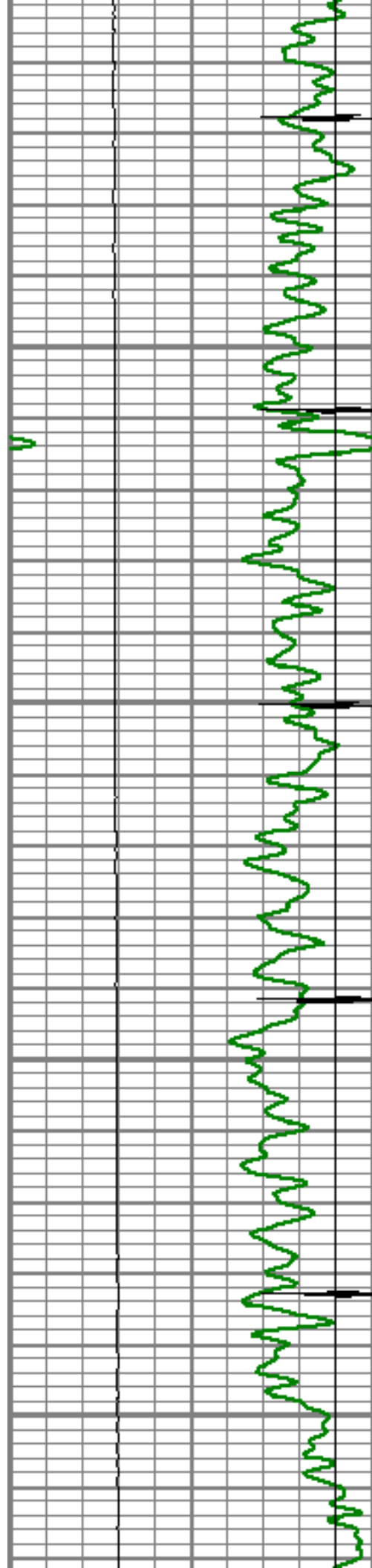
4700

4750

4800

4850



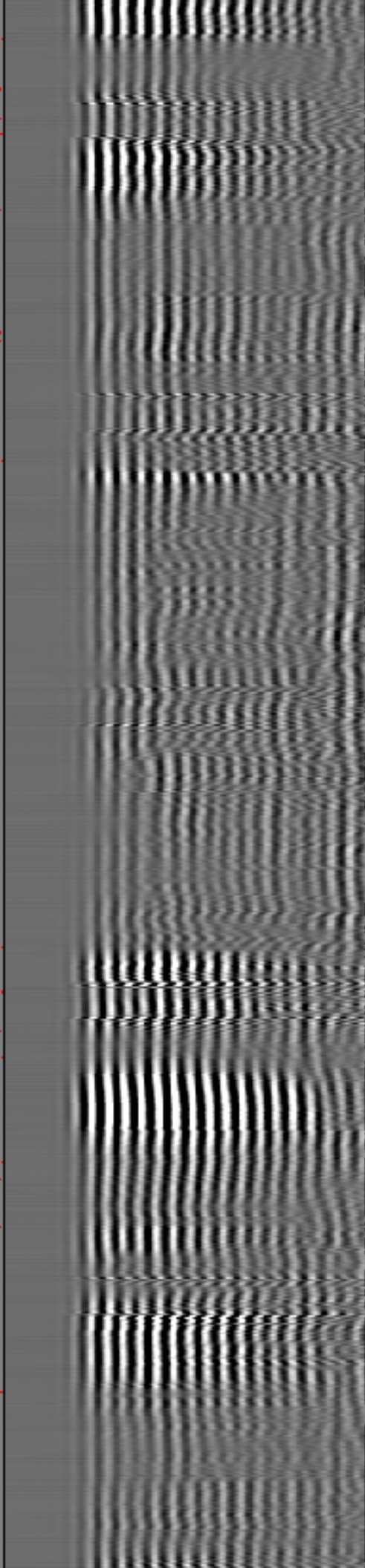
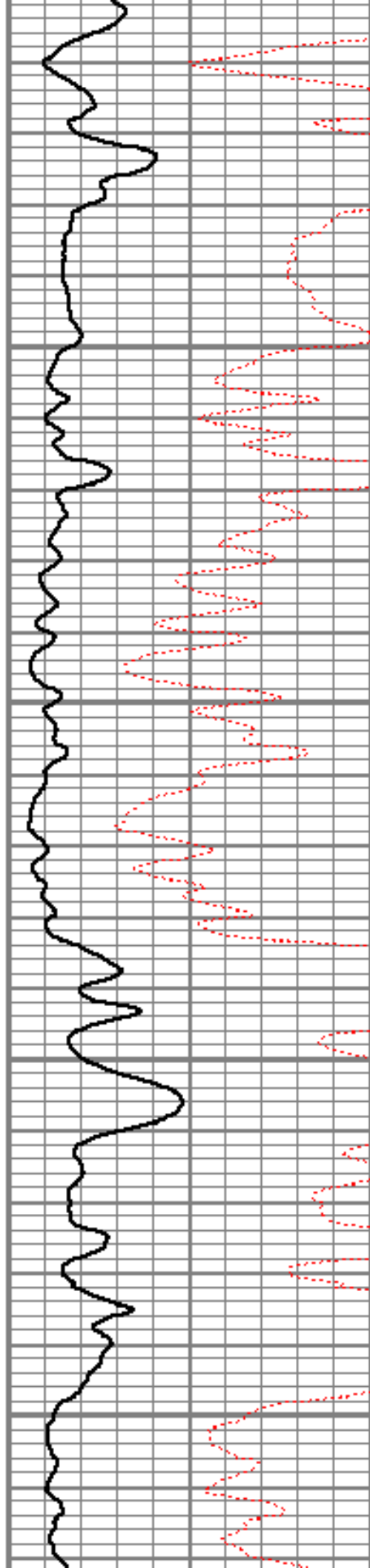


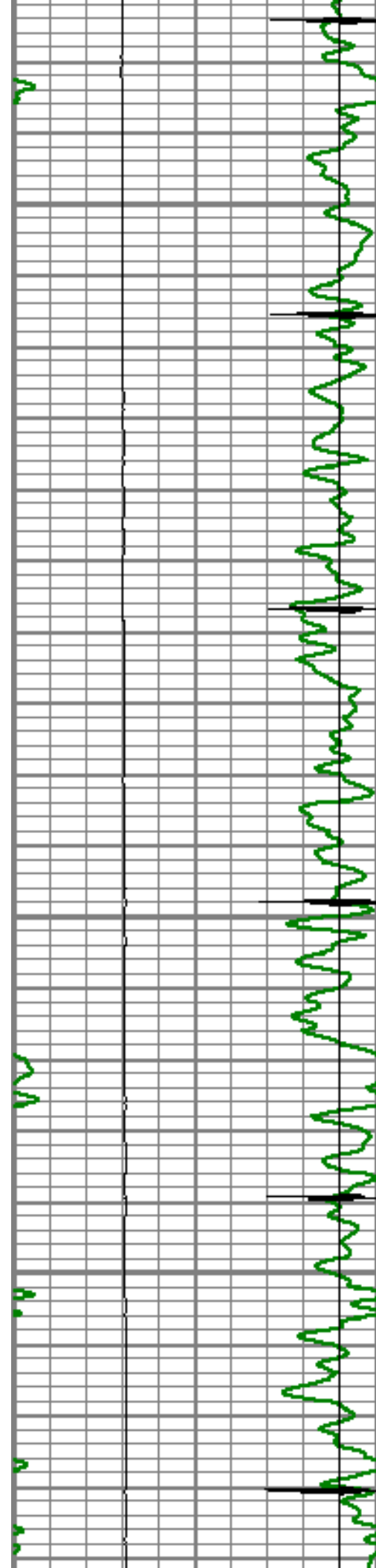
4900

4950

5000

5050



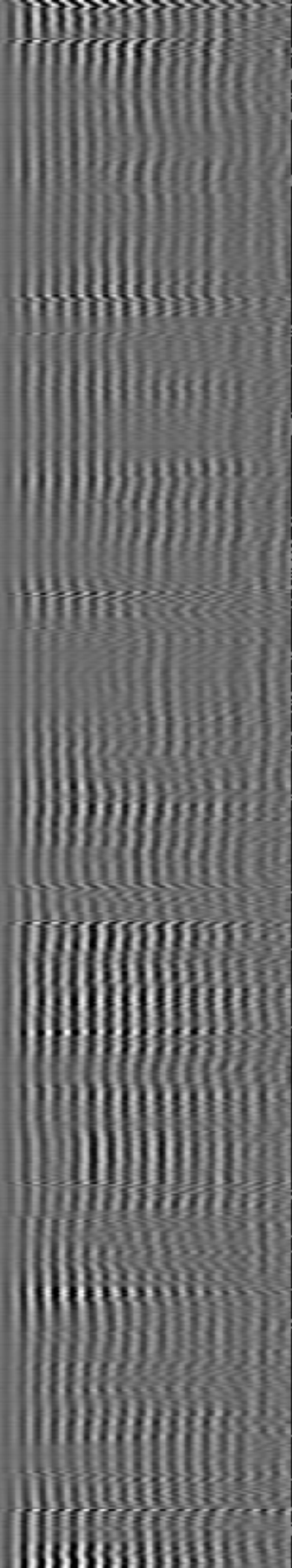
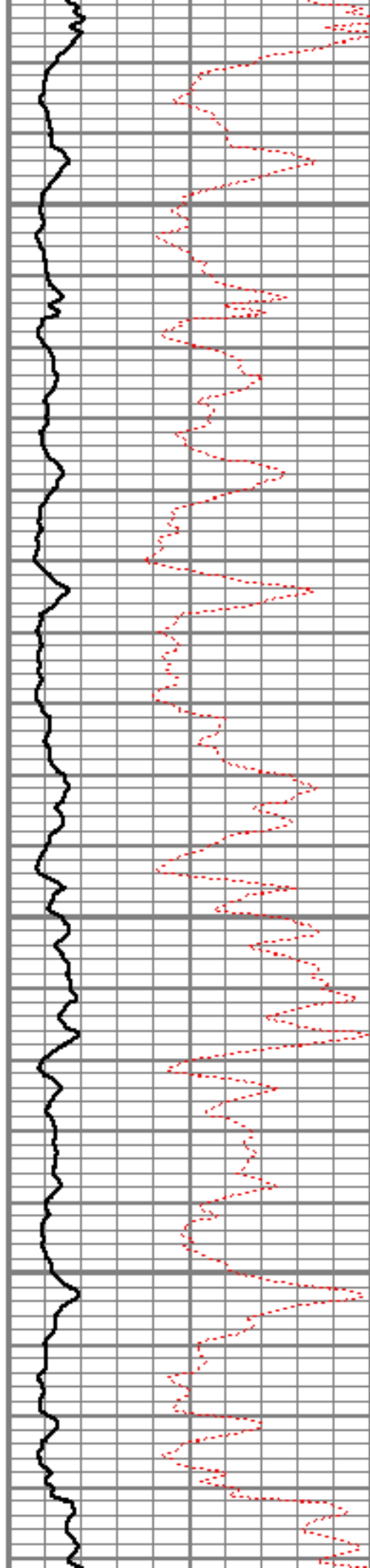


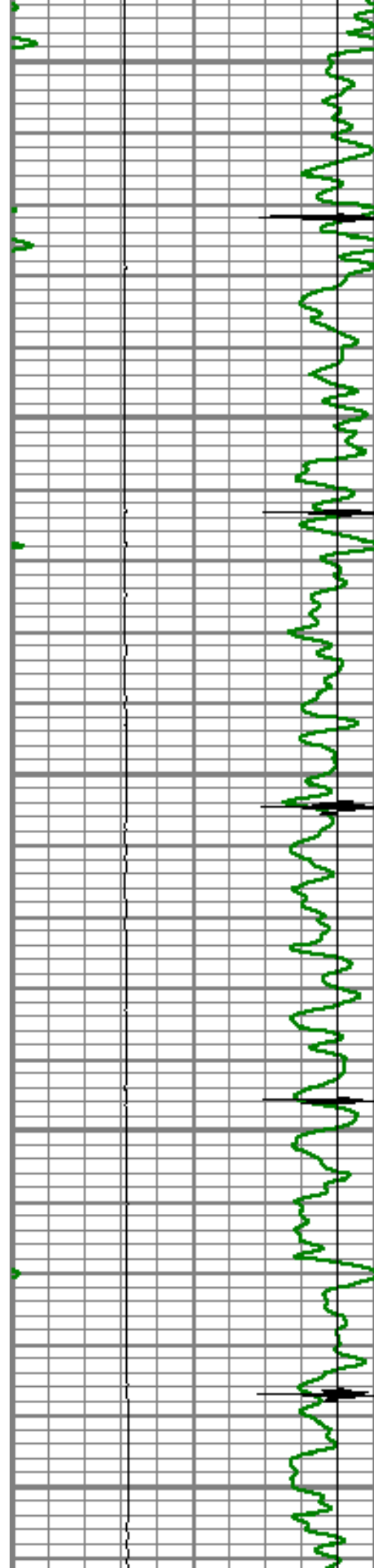
5100

5150

5200

5250





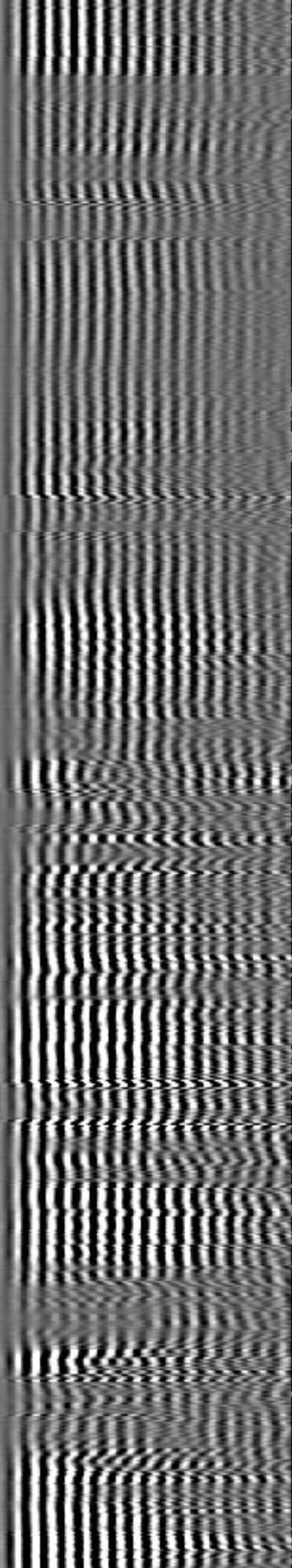
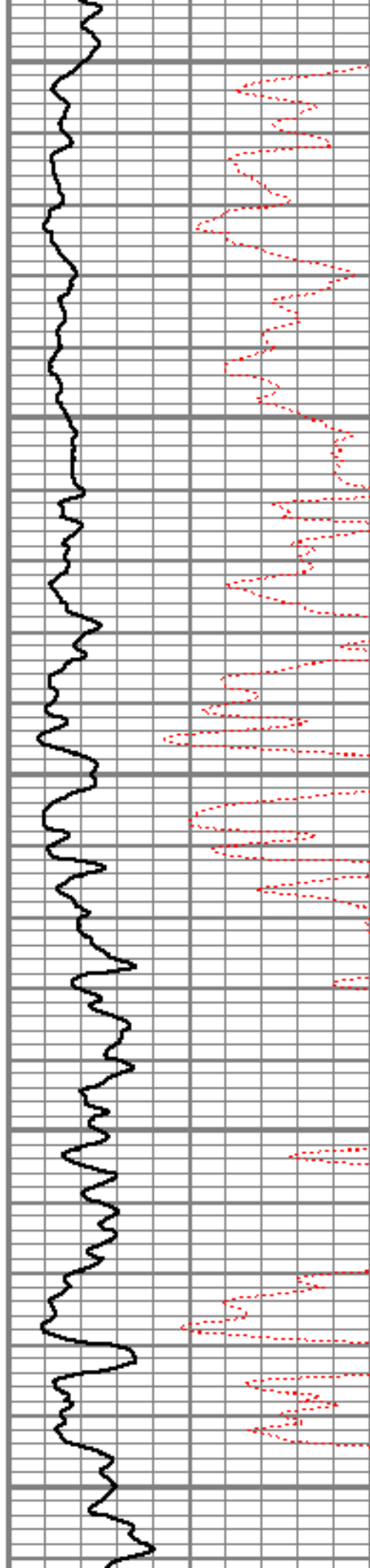
5300

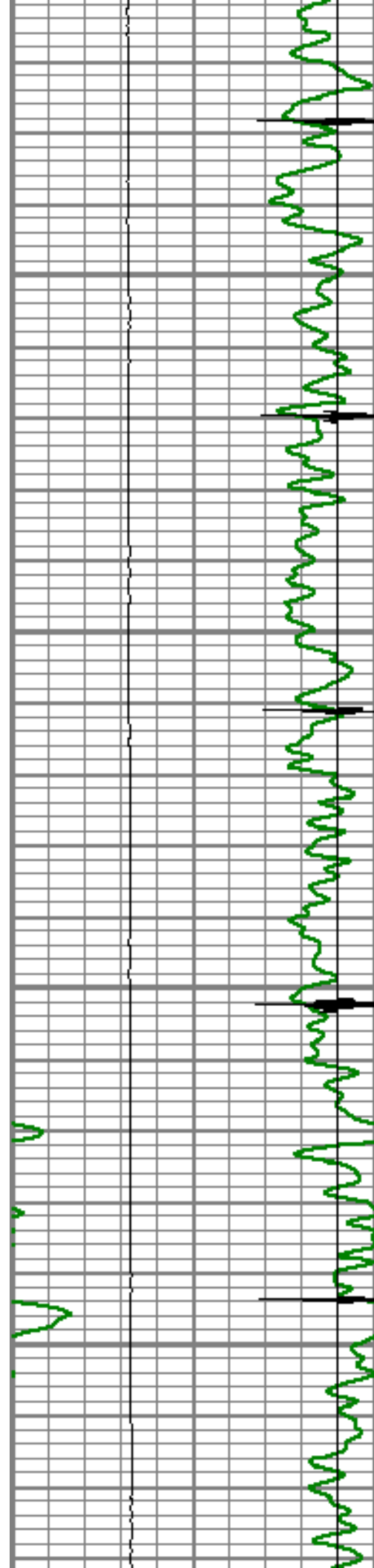
5350

5400

5450

5500



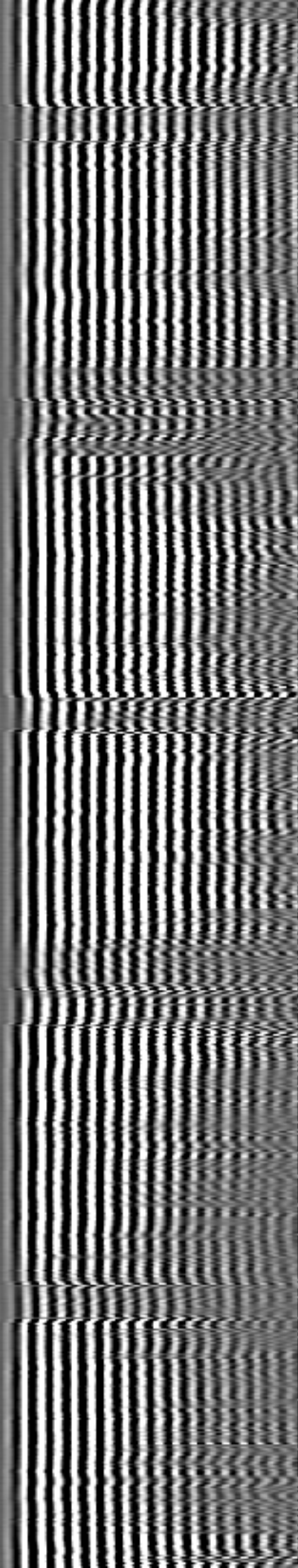
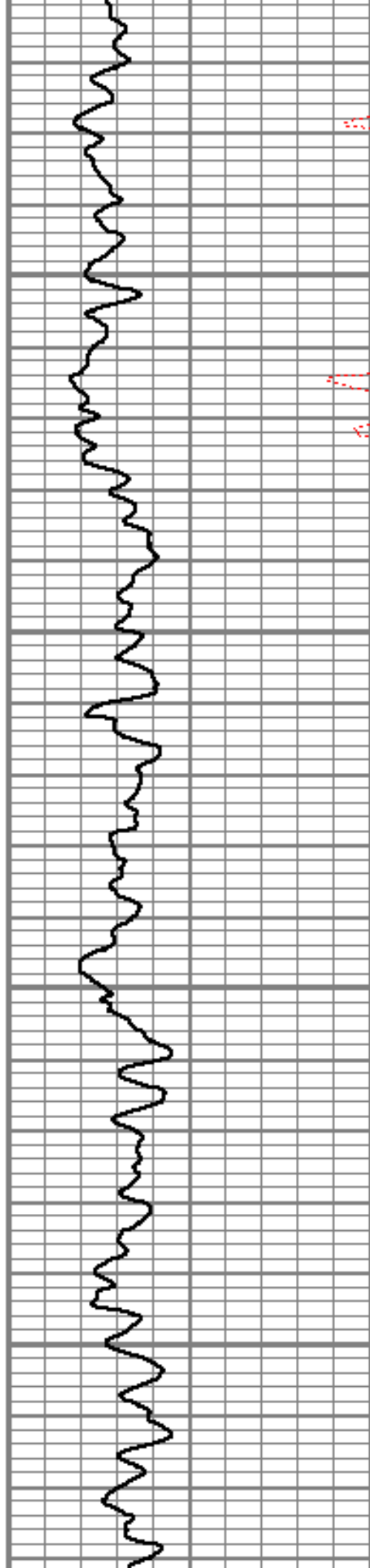


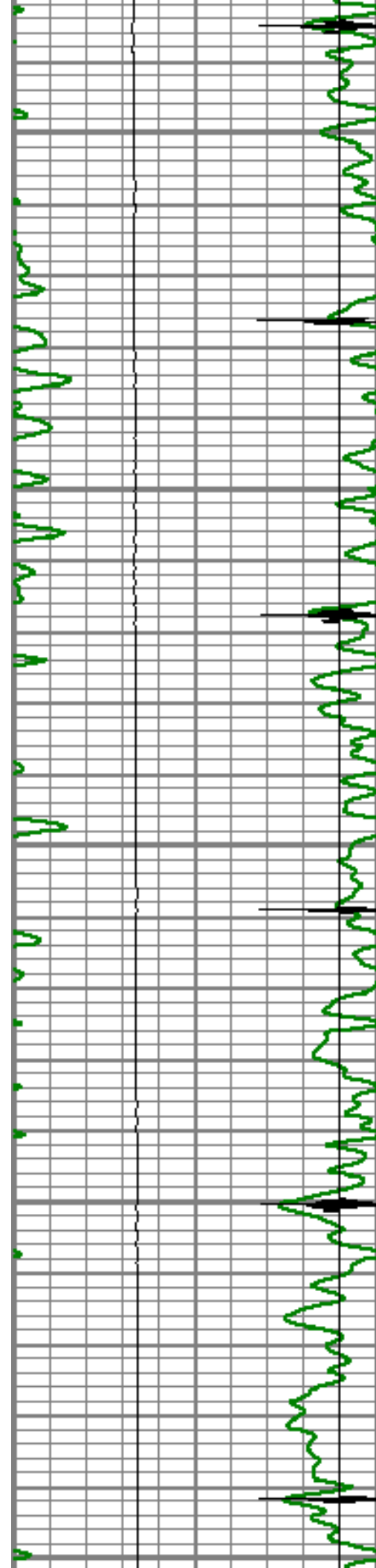
5550

5600

5650

5700





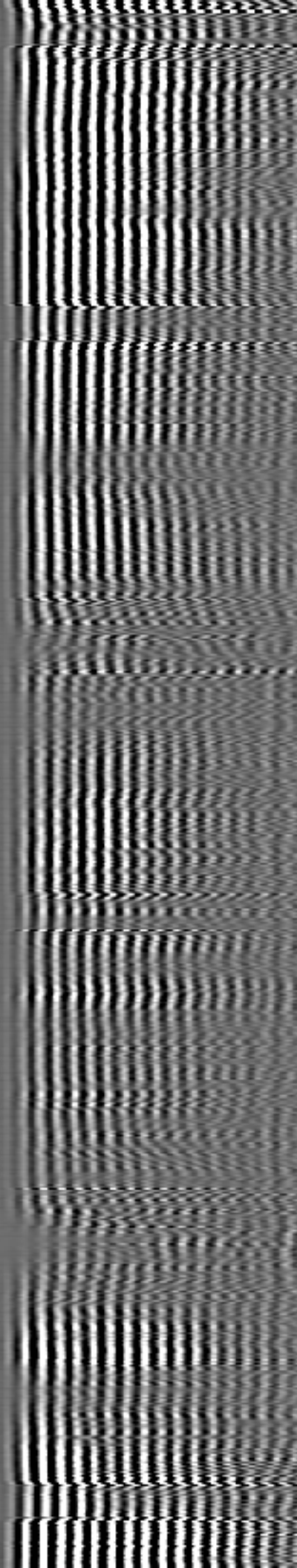
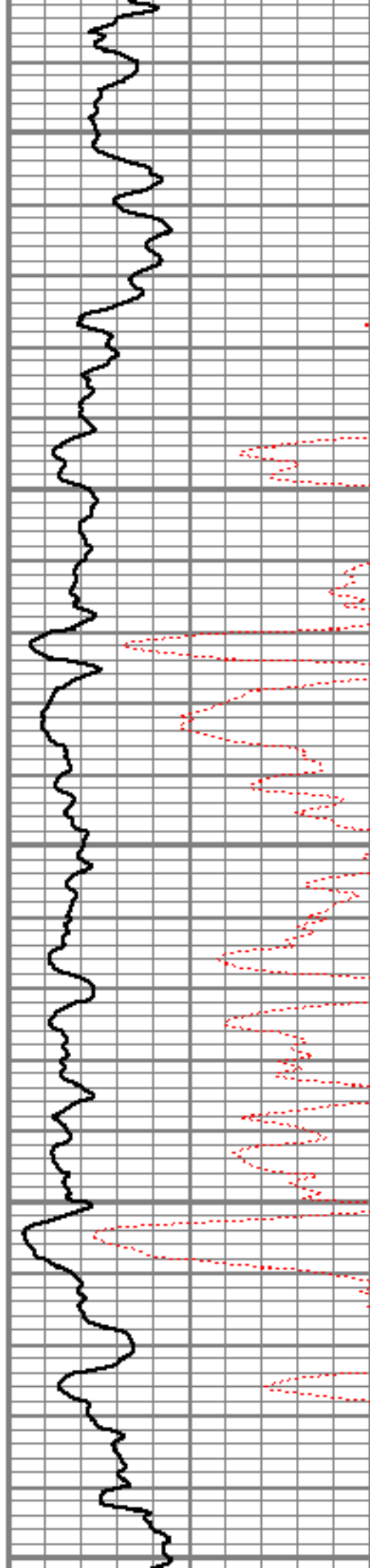
5750

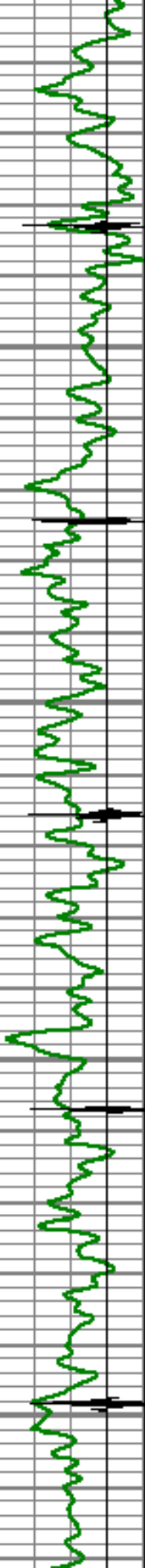
5800

5850

5900

5950



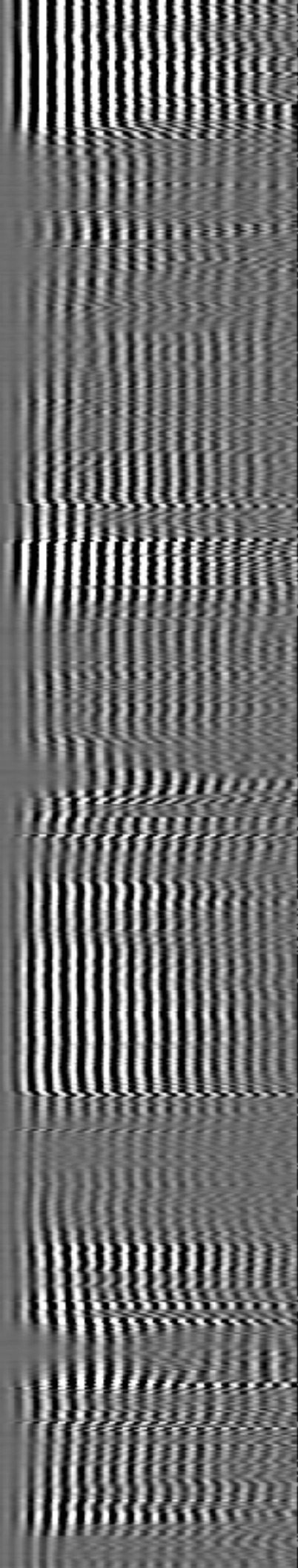
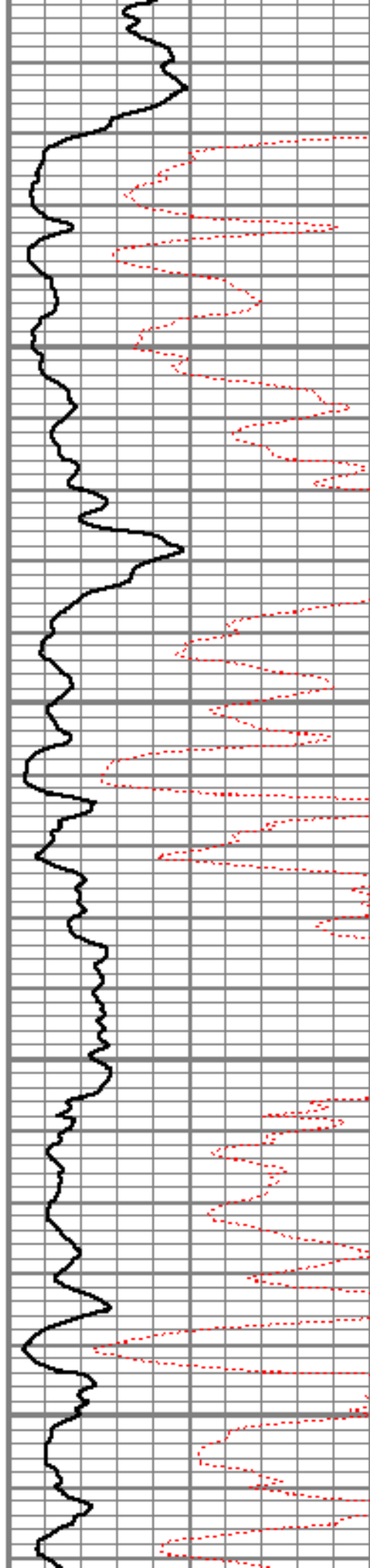


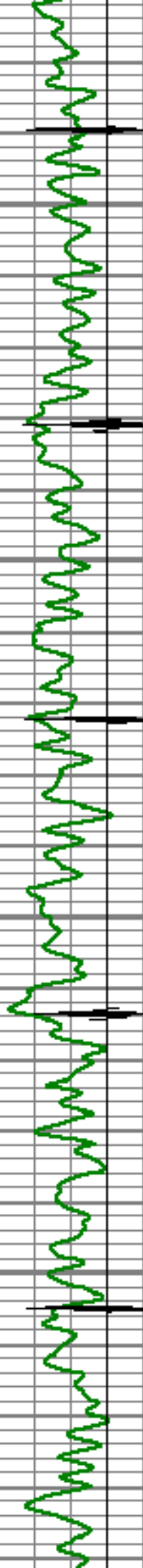
6000

6050

6100

6150



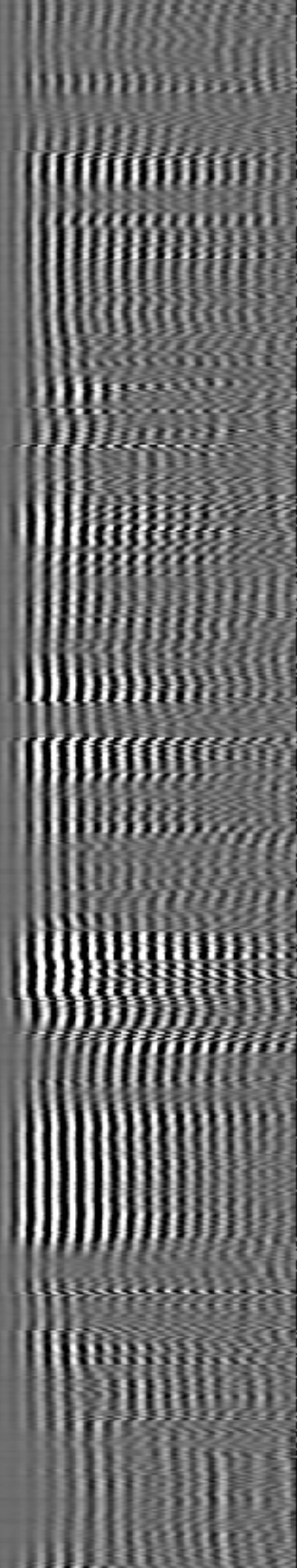
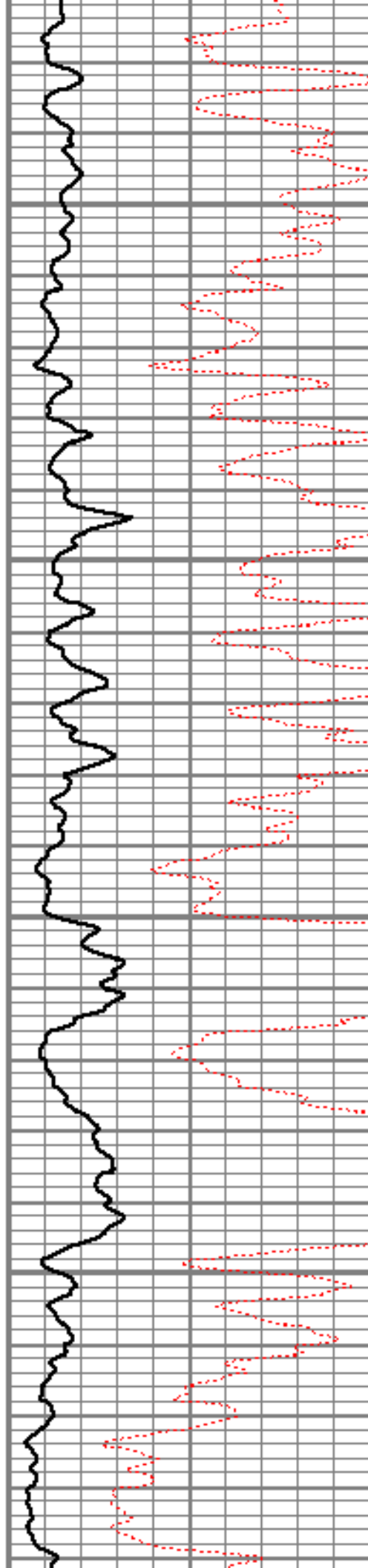


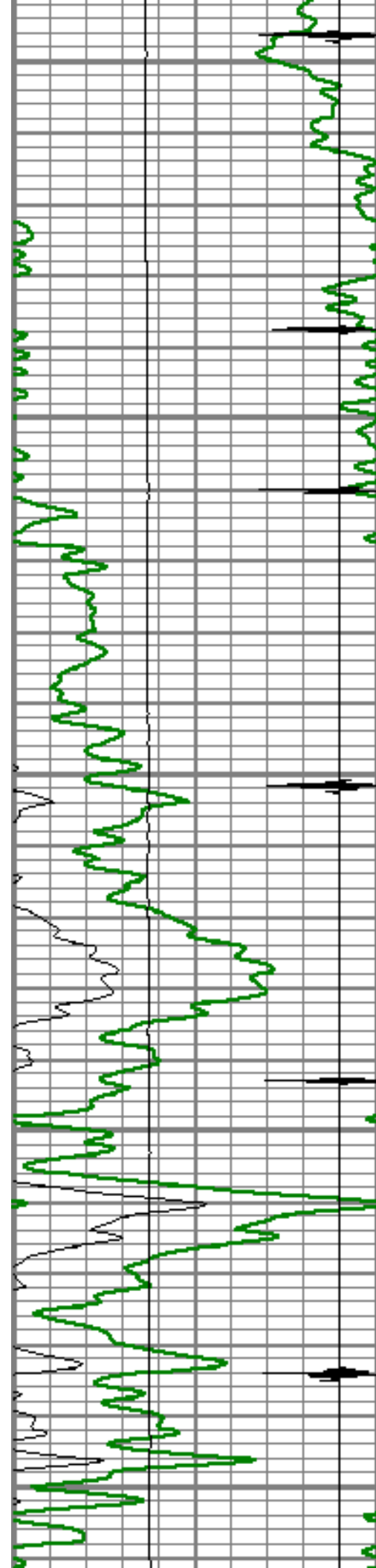
6200

6250

6300

6350





6400

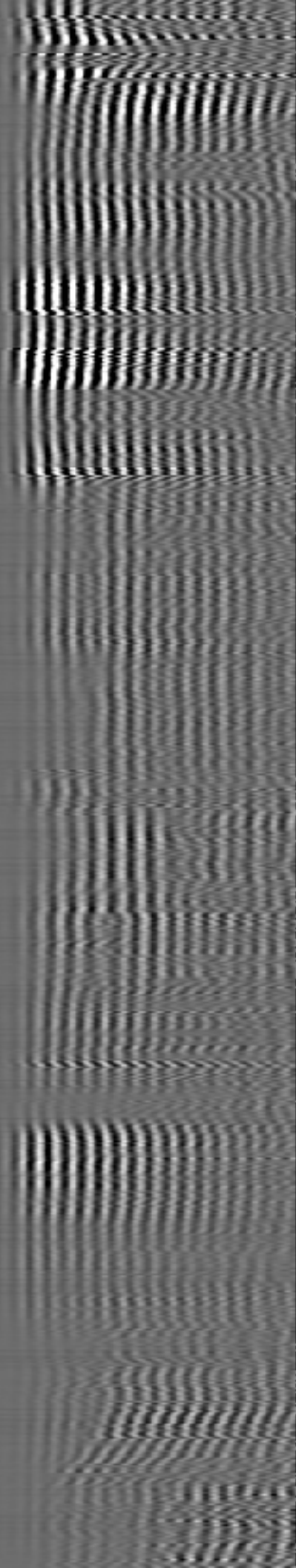
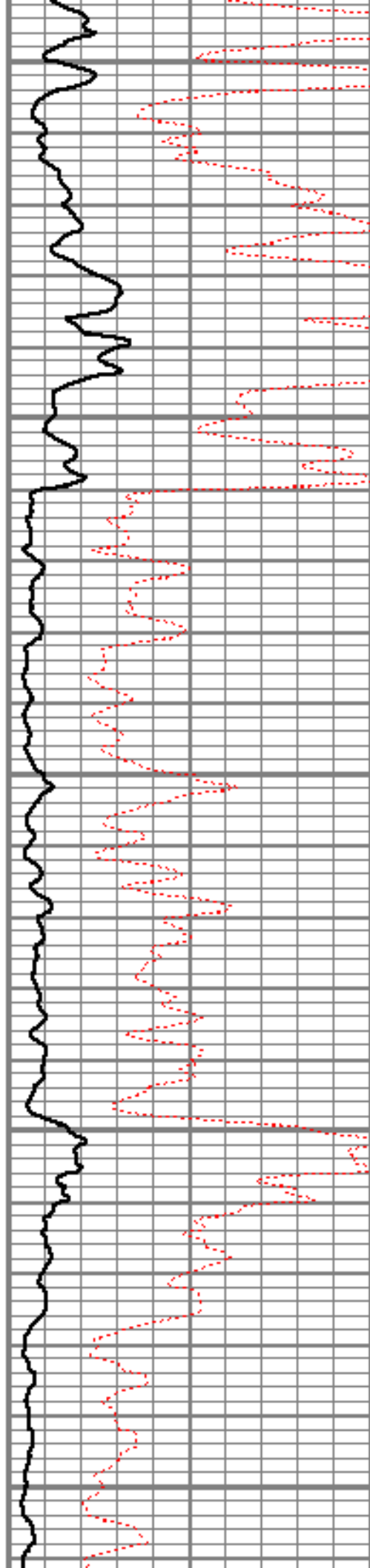
Short Joint

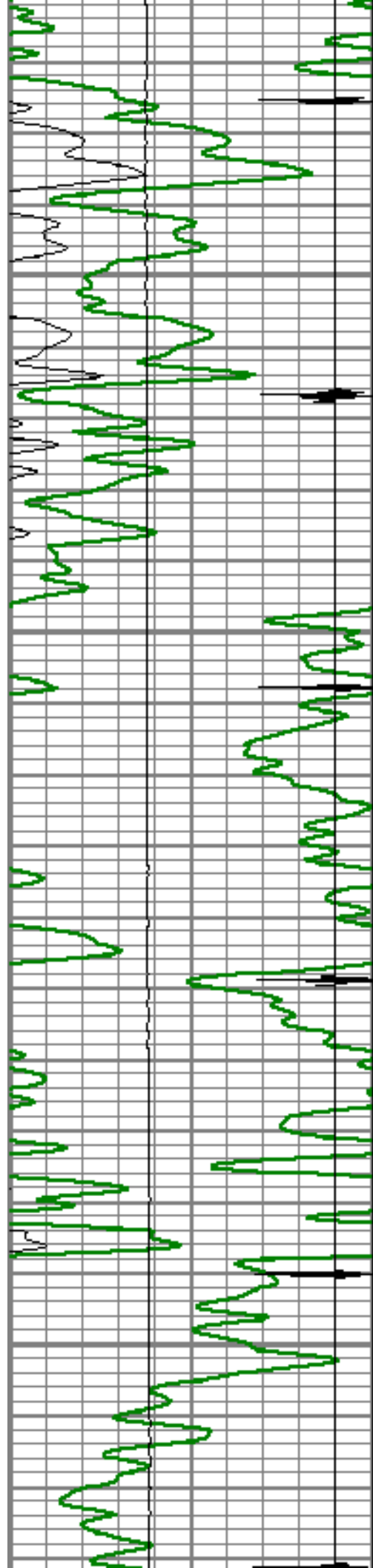
6450

6500

6550

6600



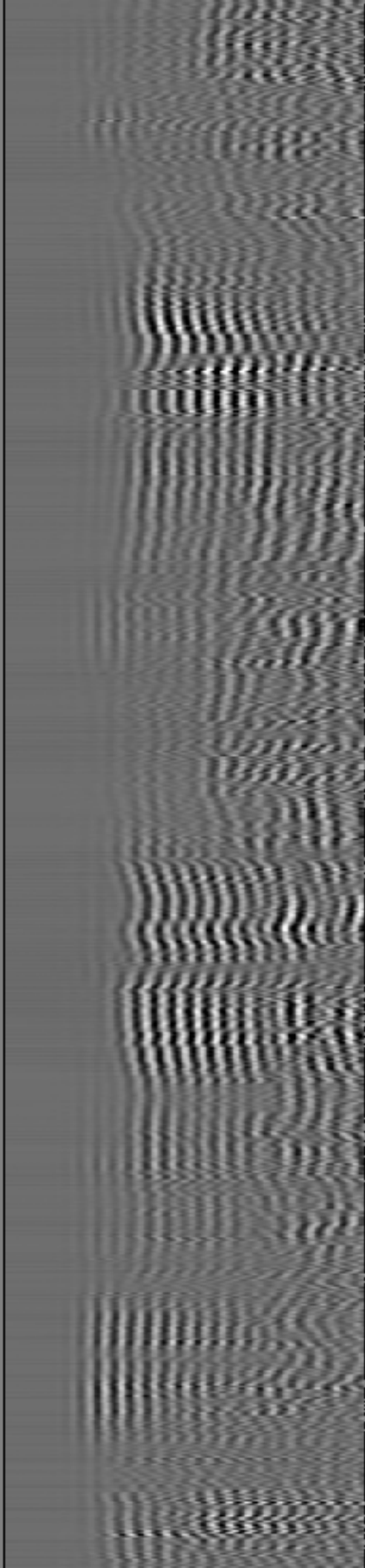
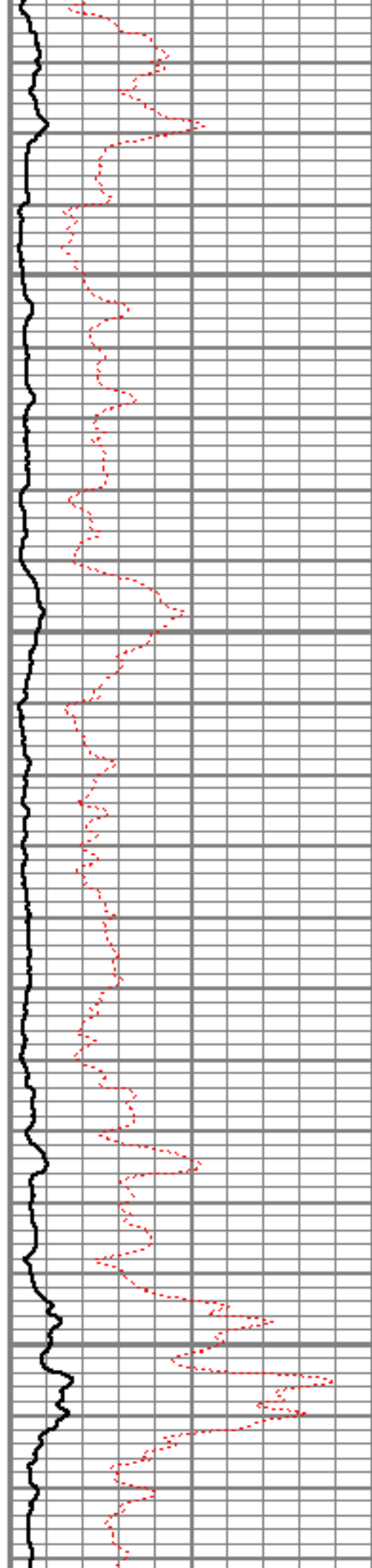


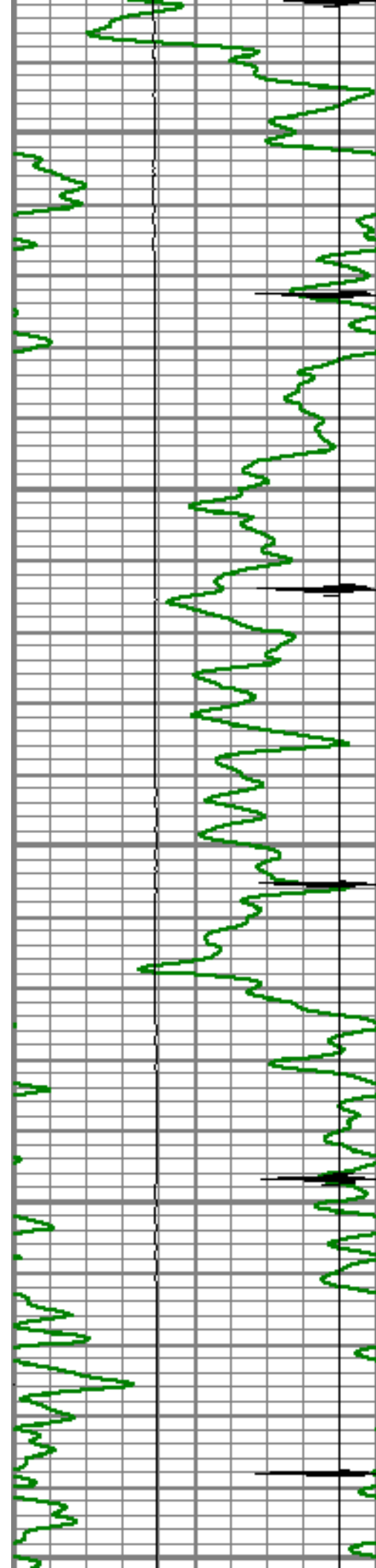
6650

6700

6750

6800





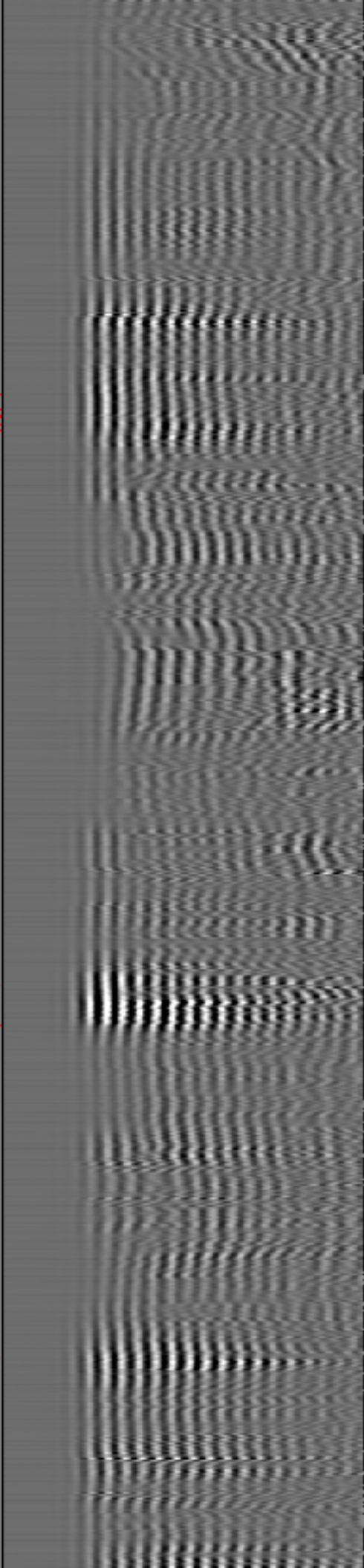
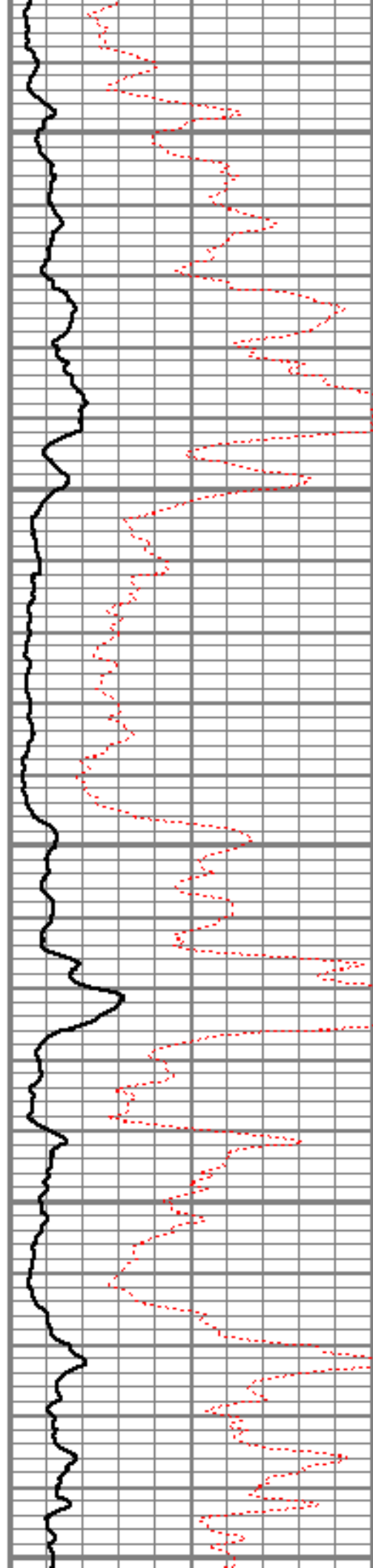
6850

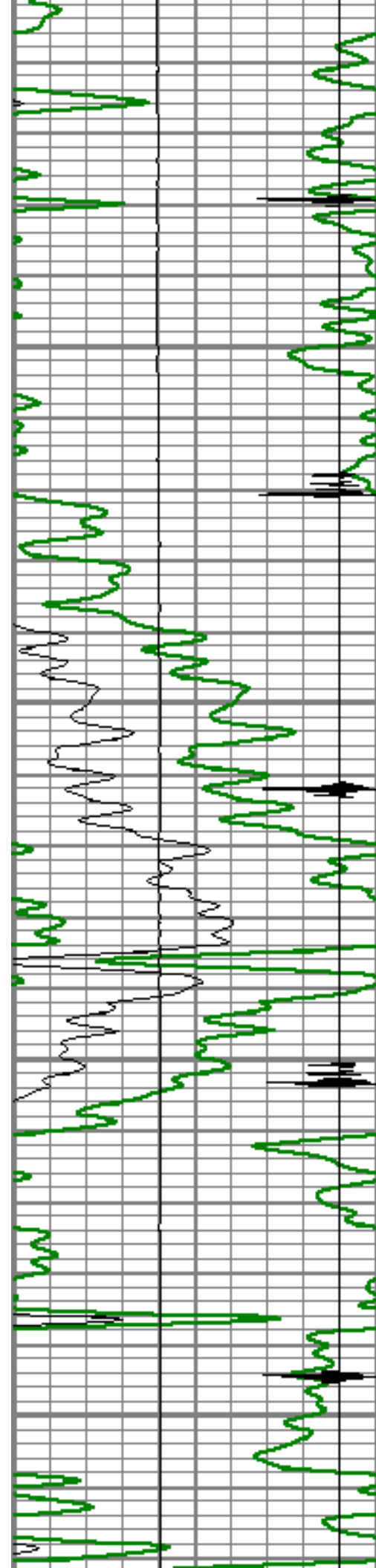
6900

6950

7000

7050



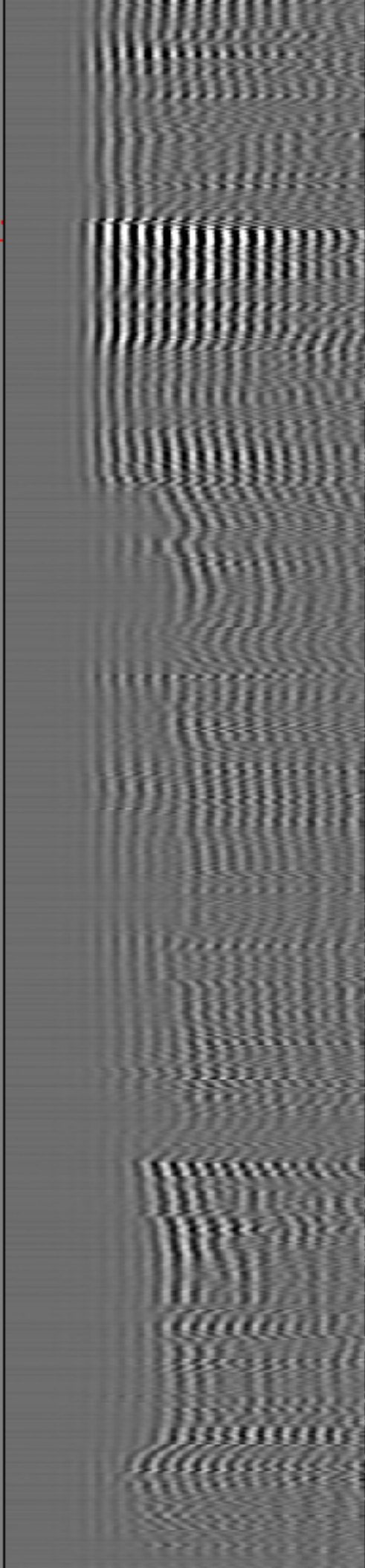
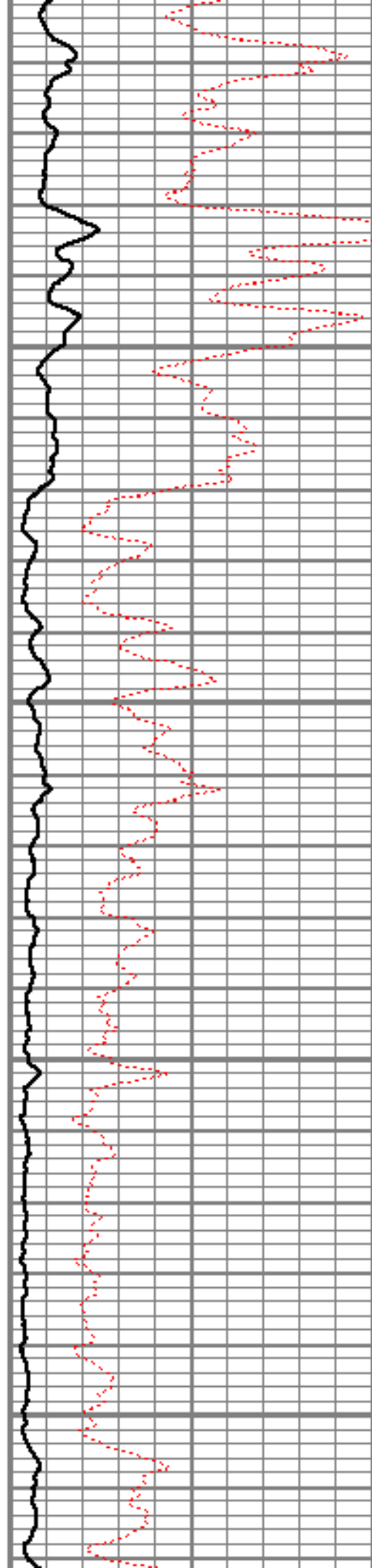


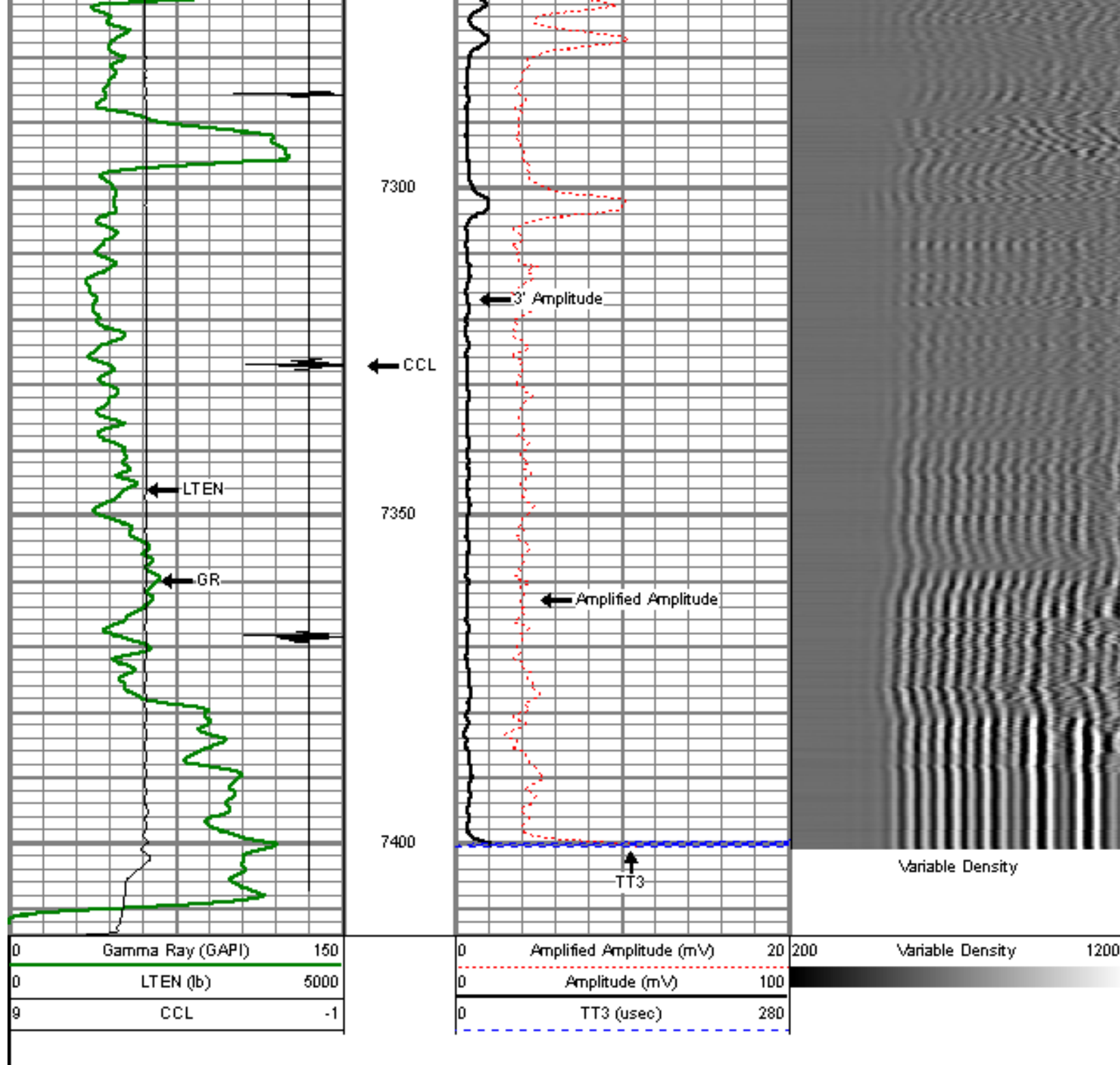
7100

7150

7200

7250

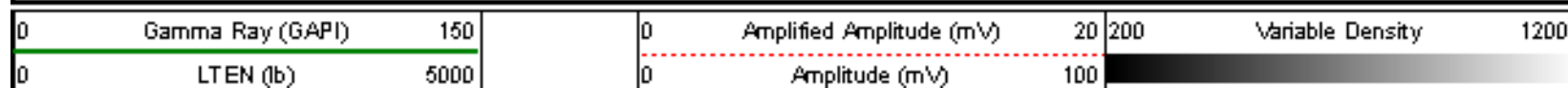


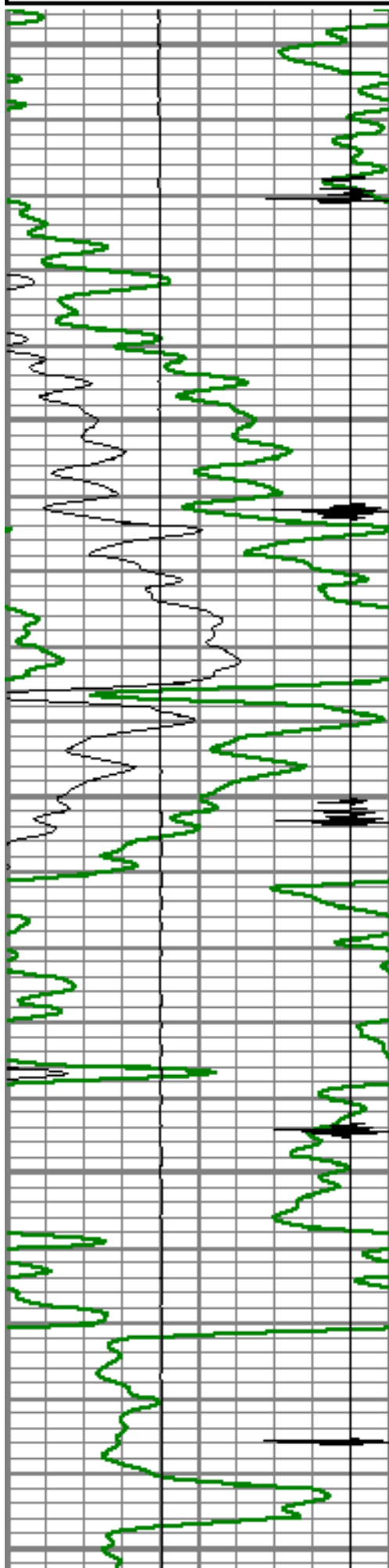


REPEAT PASS

5" = 100'

Database File: kuner 1-25.db
 Dataset Pathname: pass6
 Presentation Format: dcbl_prb
 Dataset Creation: Sat Jul 30 08:10:43 2011 by Log Std Casedhole 09061
 Charted by: Depth in Feet scaled 1:240





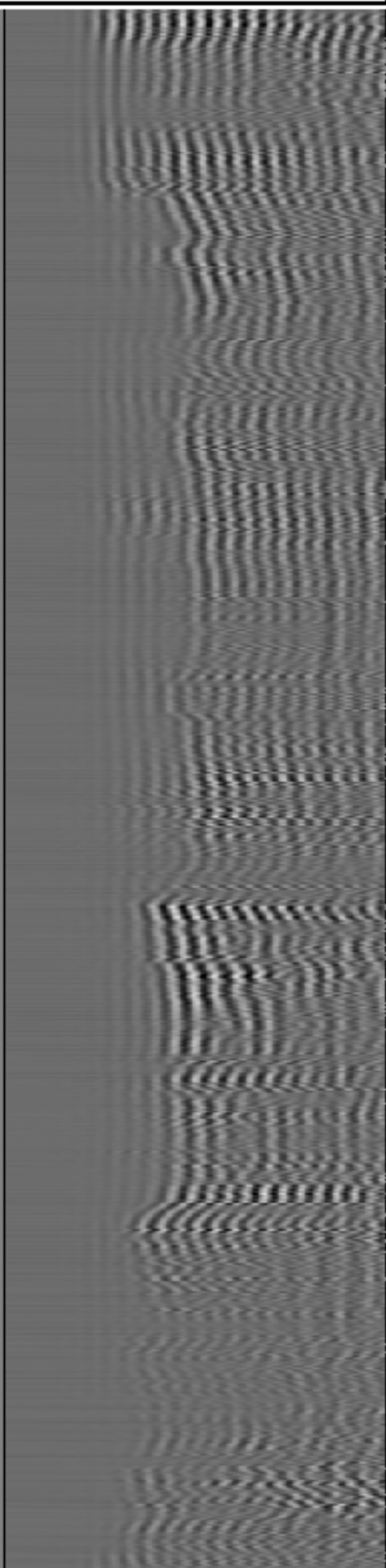
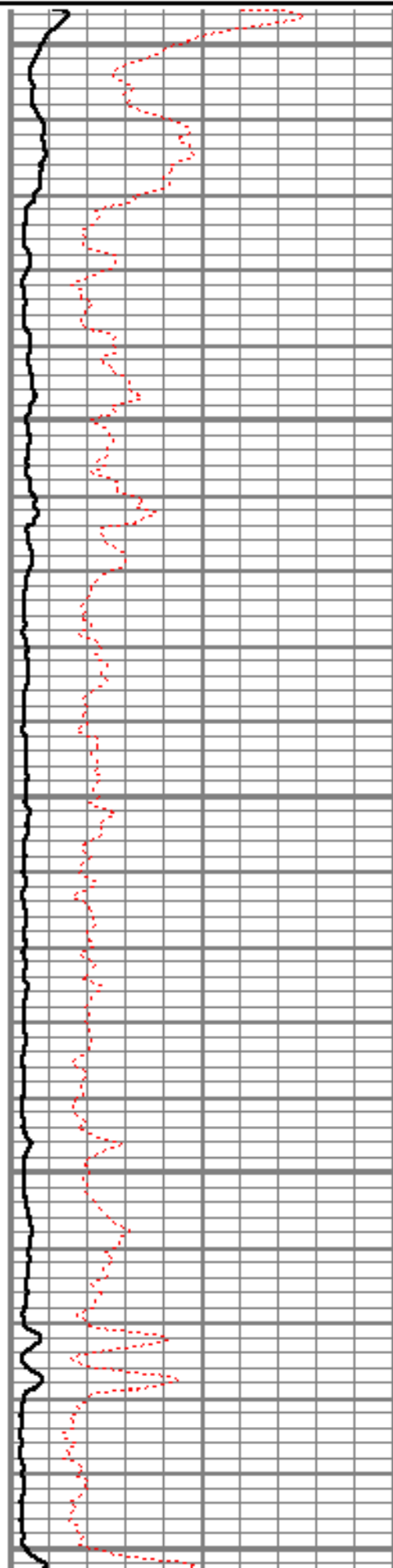
7100

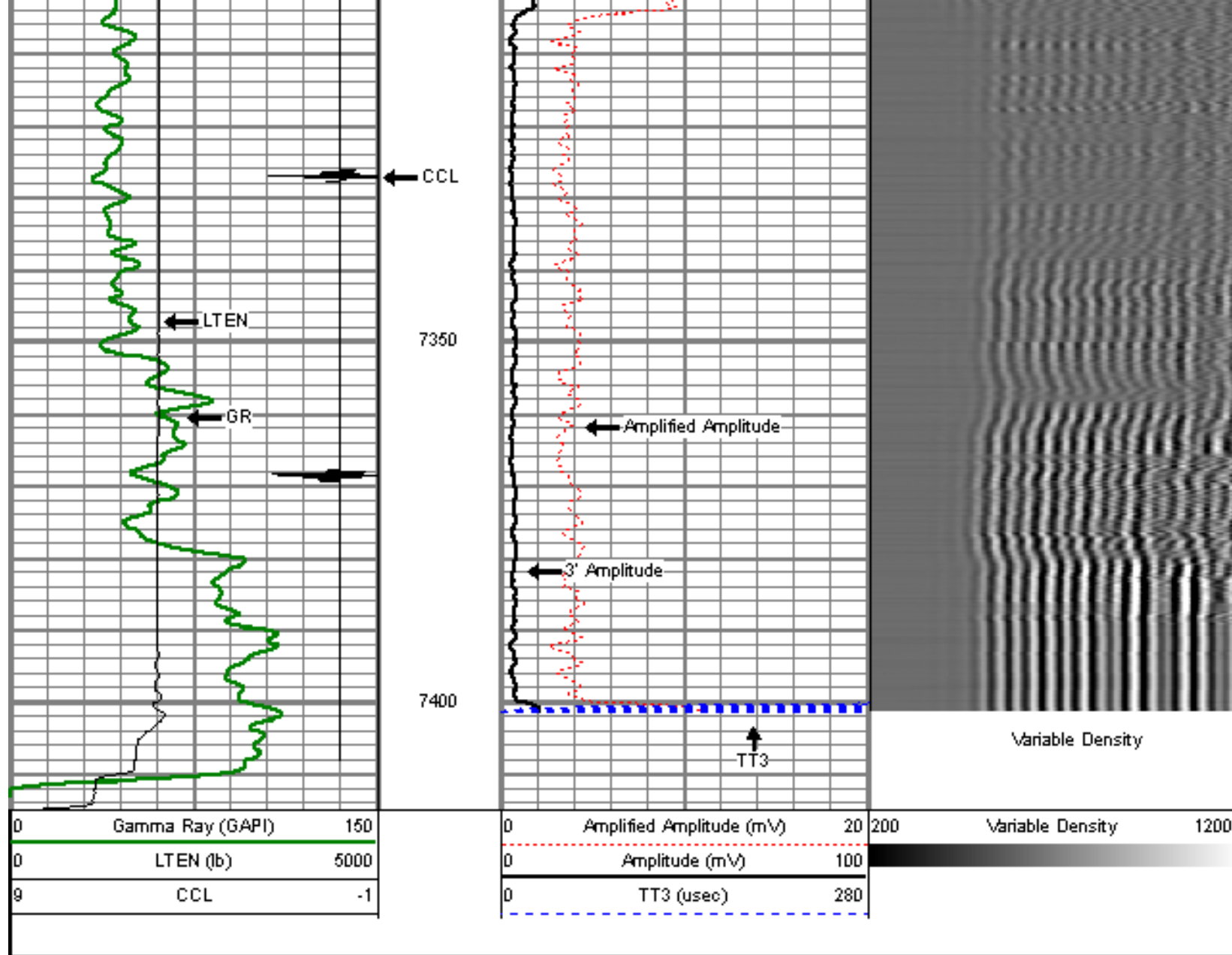
7150

7200

7250

7300





Company
Well
Field
County
State

ENCANA OIL & GAS (USA) INC
KUNER 1-25
WATTENBERG
WELD
COLORADO