



# CEMENT BOND LOG

Mesa Wireline

Company	ENCANA OIL & GAS (USA) INC	Company	ENCANA OIL & GAS (USA) INC
Well	KUNER 41-25	Well	KUNER 41-25
Field	WATTENBERG	Field	WATTENBERG
County	WELD	County	WELD
State	COLORADO	State	COLORADO
Location:	API # : 05-123-30812-0000	Other Services	NONE
SHL: 1257 FNL & 278 FEL BHL: 656 FNL & 655 FEL SEC. 25 TWP. 5N RGE. 64W		Elevation	
Permanent Datum	GROUND LEVEL	Elevation	4586
Log Measured From	KELLY BUSHING = 12'	D.F. 4697'	
Drilling Measured From	KELLY BUSHING	G.L. 4586'	

Date	30 JULY 2011	ONE			
Run Number		ONE			
Depth Driller		7303'			
Depth Logger		7280'			
Bottom Logged Interval		7280'			
Top Log Interval		4300'			
Open Hole Size		4.5"			
Type Fluid		WATER			
Density / Viscosity		~8.3 #			
Max. Recorded Temp.		250 DEG F			
Estimated Cement Top		4660'			
Time Well Ready		N/A			
Time Logger on Bottom		N/A			
Equipment Number		10701 PRD 01			
Location		AULT.CO			
Recorded By		V. FULLER			
Witnessed By		T. MAJORS			
Borehole Record					
Run Number	Bit	From	To	Size	Weight
ONE	12.25"	0'	820'		
TWO	7.875"	0'	7303'		
Tubing Record					
Casing Record	Size	Wt/Yd	Top	Bottom	
Surface String	8.625"	24 #	0'	800'	
Prot. String					
Production String	4.5"	11.6 #	0'	7303'	
Liner					

<<< Fold Here >>>

All interpretations are opinions based on inferences from electrical or other measurements and we cannot and do not guarantee the accuracy or correctness of any interpretation, and we shall not, except in the case of gross or willful negligence on our part, be liable or responsible for any loss, costs, damages, or expenses incurred or sustained by anyone resulting from any interpretation made by any of our officers, agents or employees. These interpretations are also subject to our general terms and conditions set out in our current Price Schedule.

## Comments

LOG NOT CORRELATED TO ANY OTHER LOG  
SHORT JOINT 6356 - 6378

WE APPRECIATE YOUR BUSINESS, MESA WIRELINE LLC, GRAND JUNCTION CO. (970) 257-0458



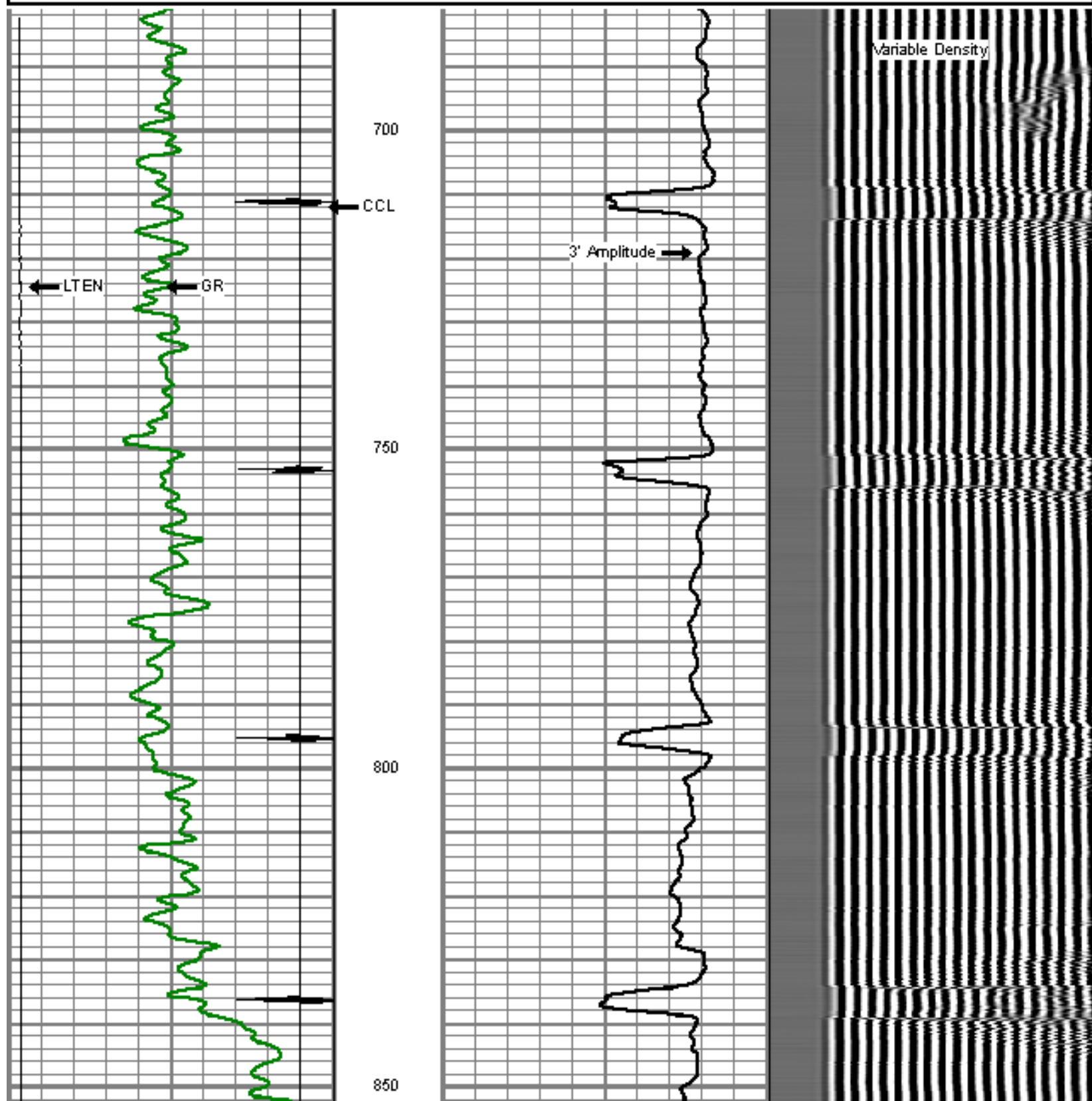
TOP REPEAT PASS

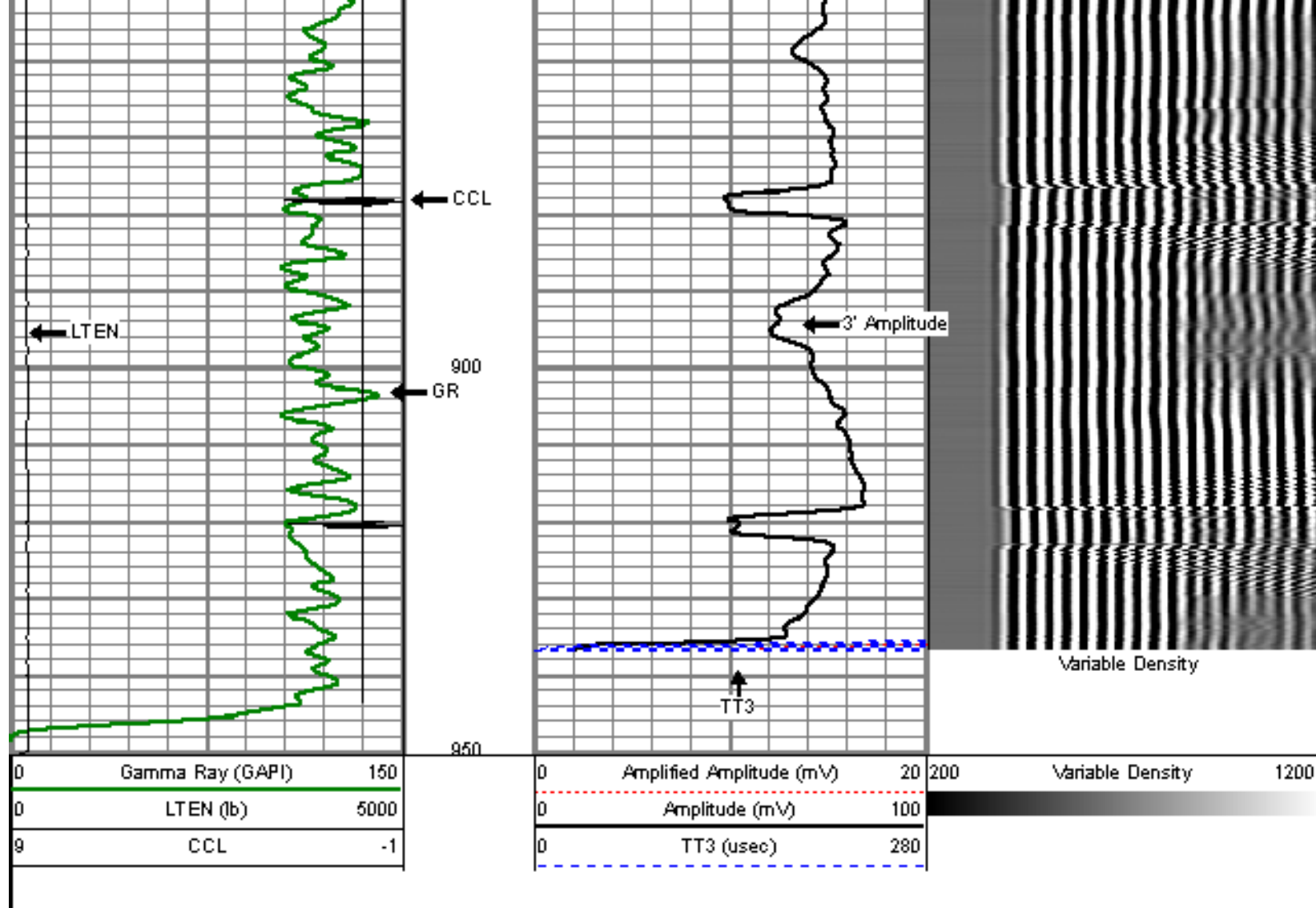
Database File: kuner 41-25.db  
Dataset Pathname: pass24  
Presentation Format: dcbl\_prb  
Dataset Creation: Sat Jul 30 16:16:14 2011 by Log Std Casedhole 09061  
Charted by: Depth in Feet scaled 1:240

0	Gamma Ray (GAPI)	150
0	LTEN (lb)	5000
9	CCL	-1

0	Amplified Amplitude (mV)	20
0	Amplitude (mV)	100
0	TT3 (usec)	280

200 Variable Density 1200

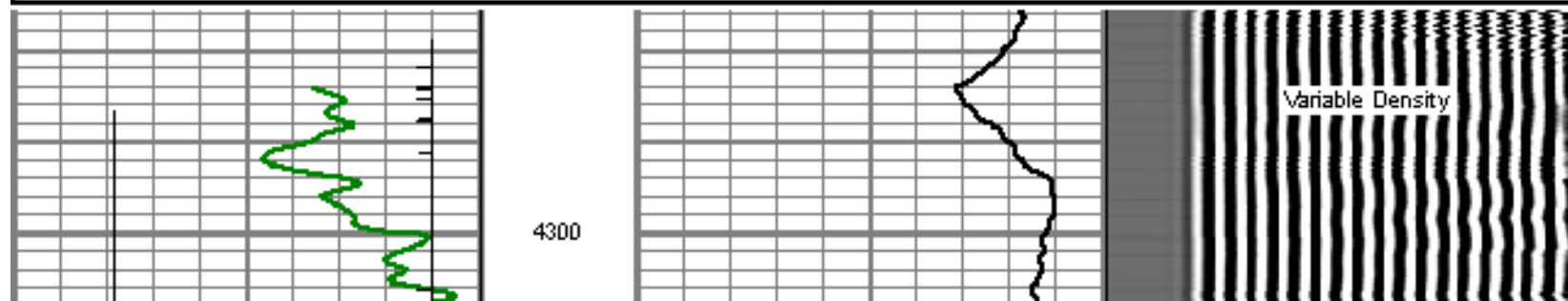
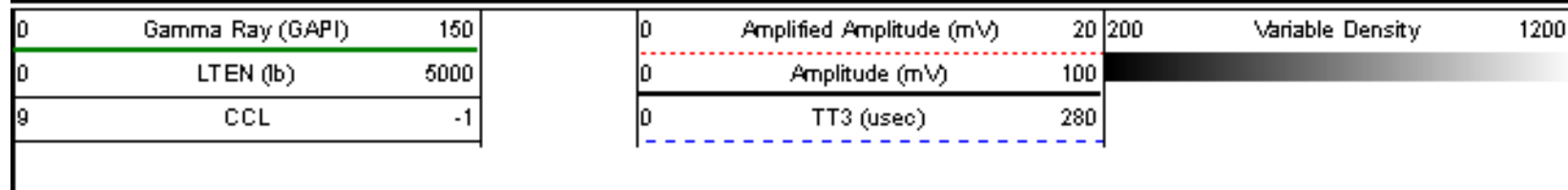


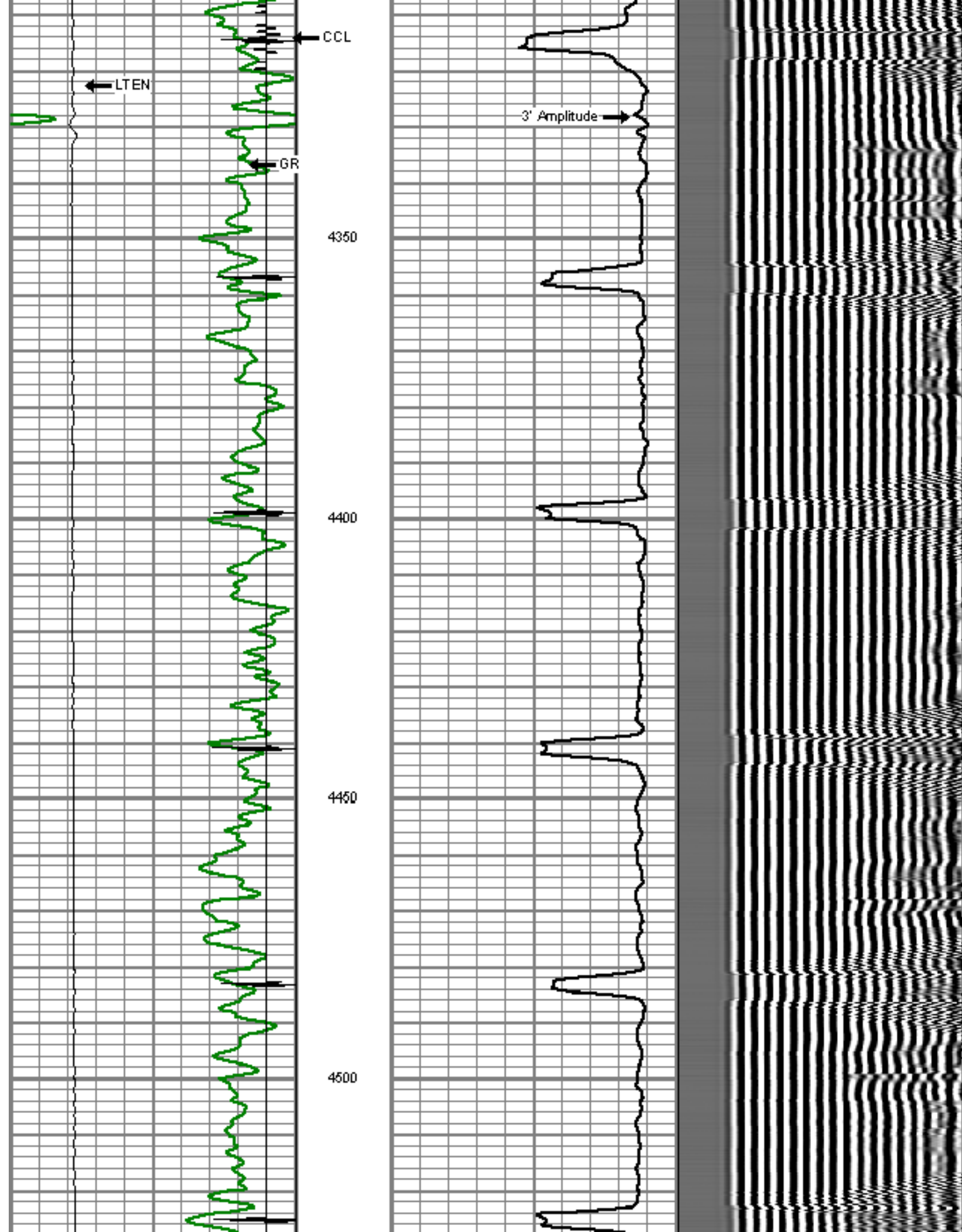


## MAIN PASS

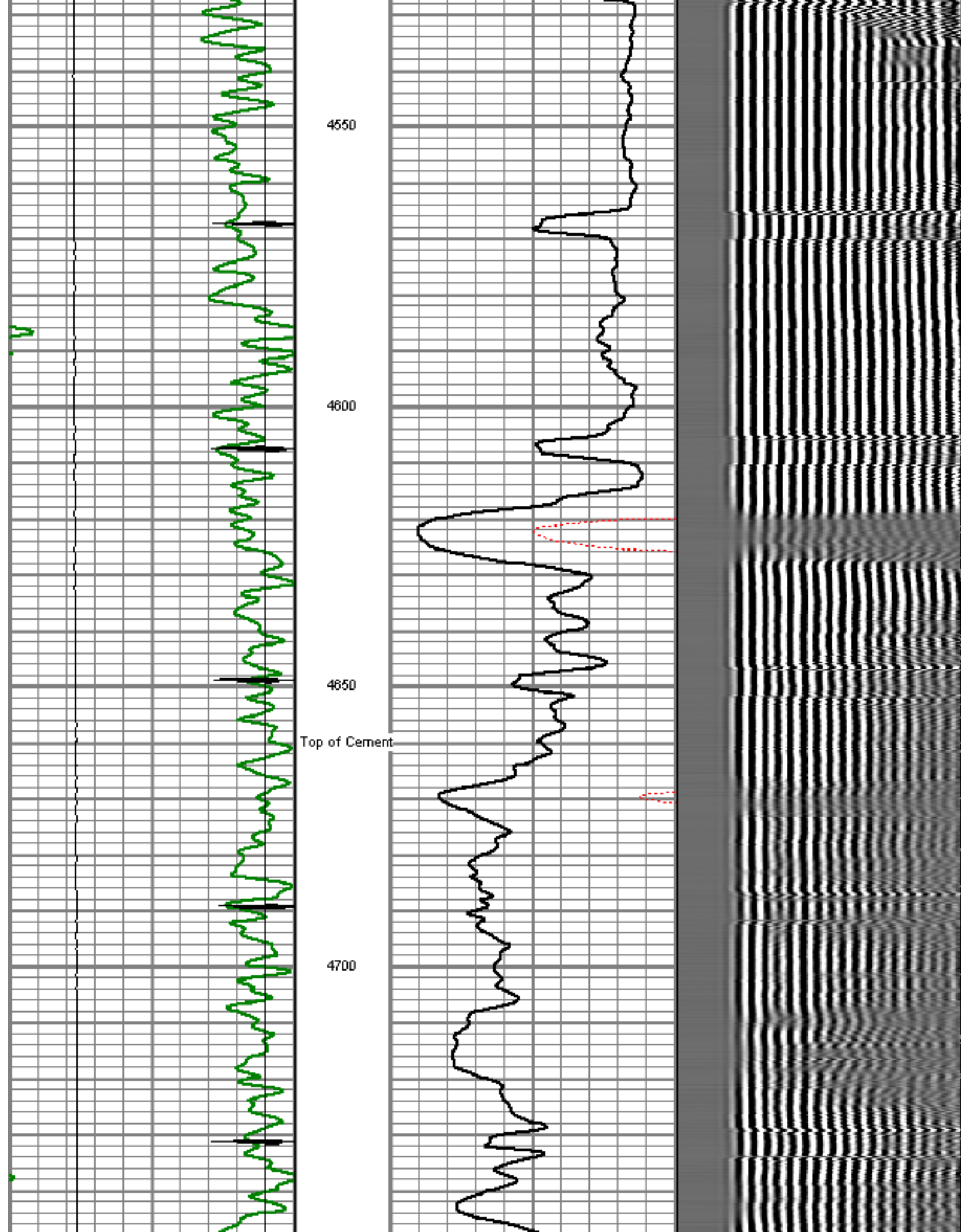
5" = 100'

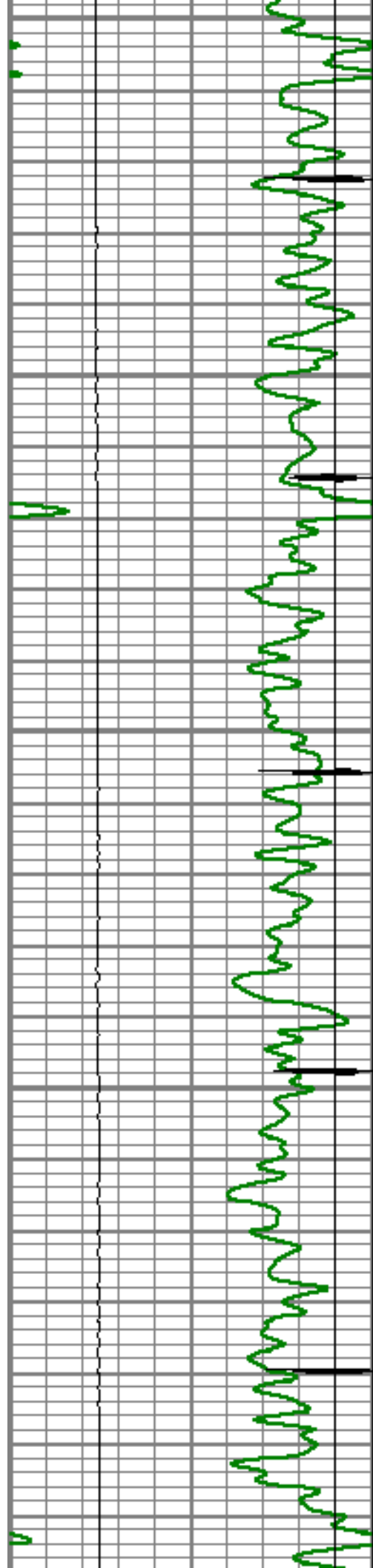
Database File: kuner 41-25.db  
 Dataset Pathname: pass23  
 Presentation Format: dcbl\_prb  
 Dataset Creation: Sat Jul 30 15:12:15 2011 by Log Std Casedhole 09061  
 Charted by: Depth in Feet scaled 1:240











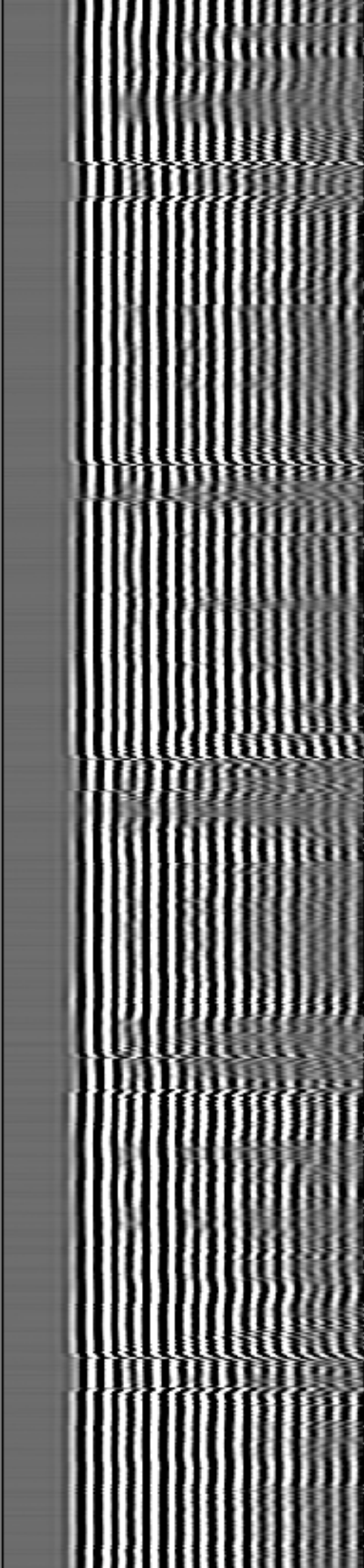
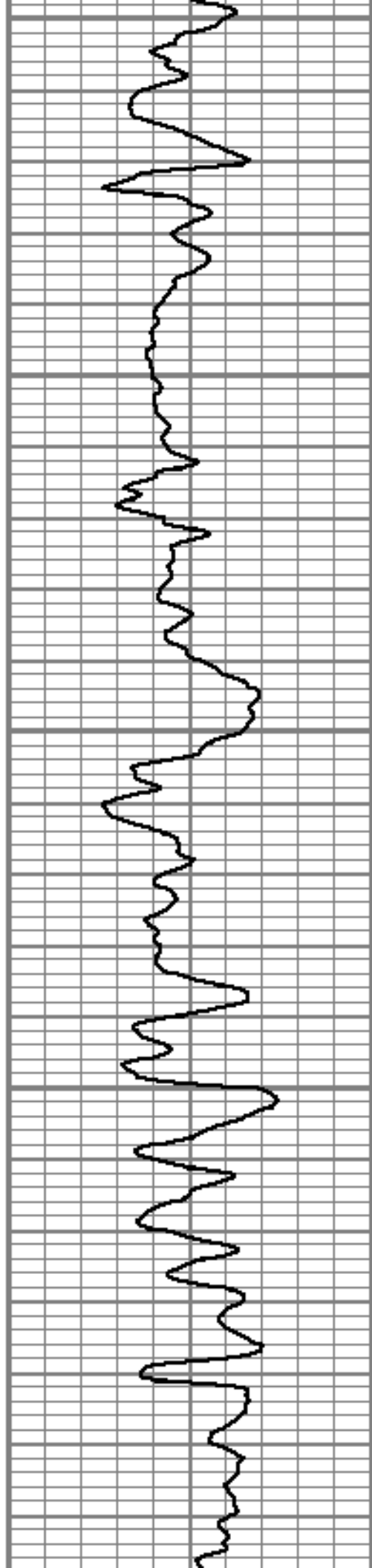
4750

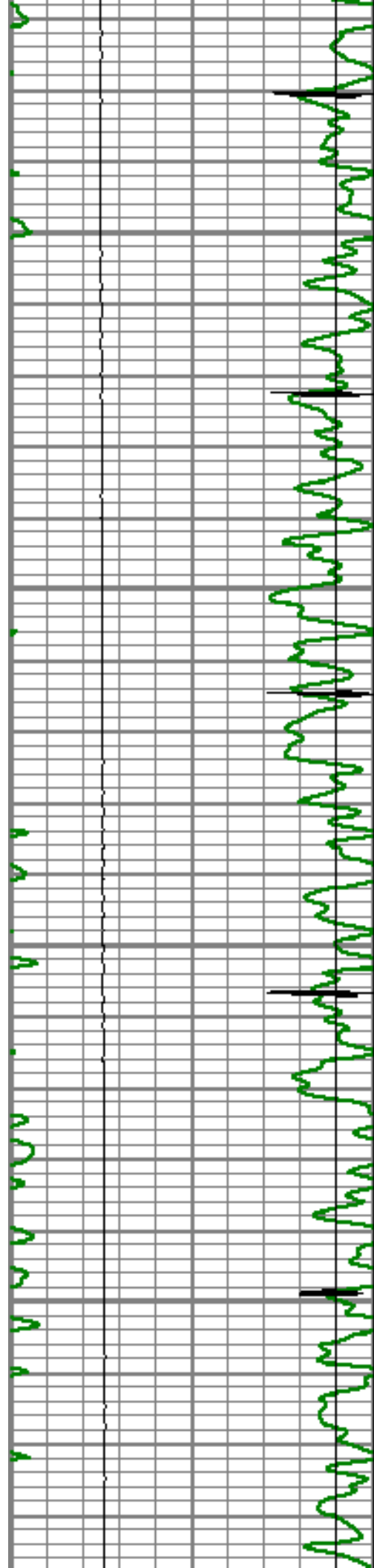
4800

4850

4900

4950



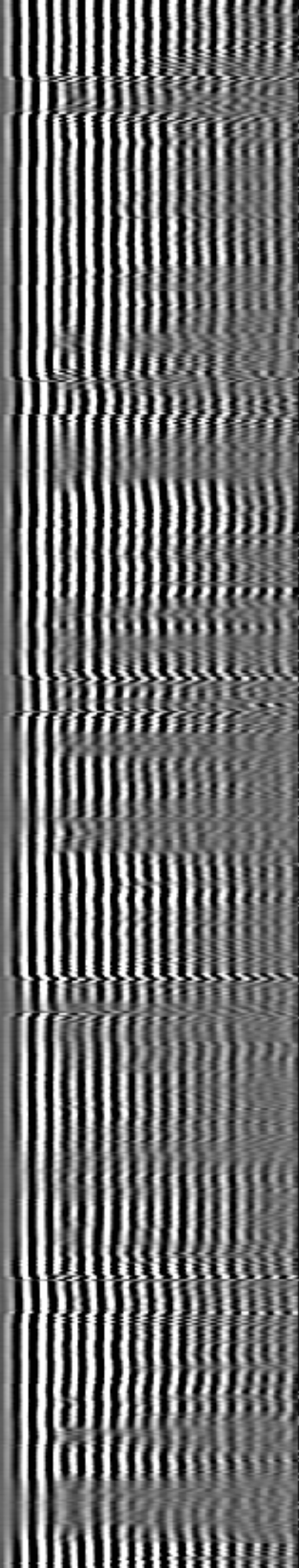
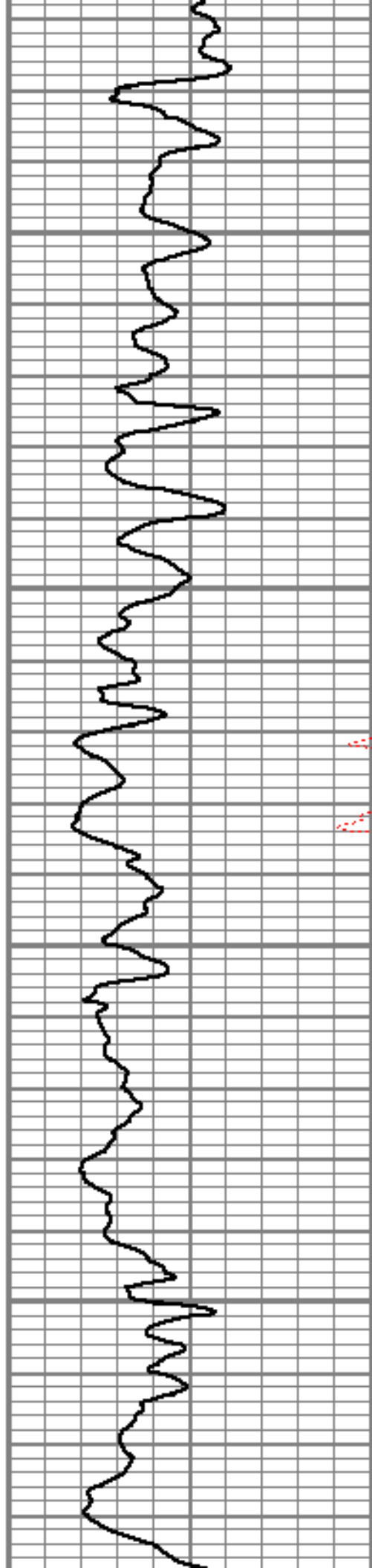


5000

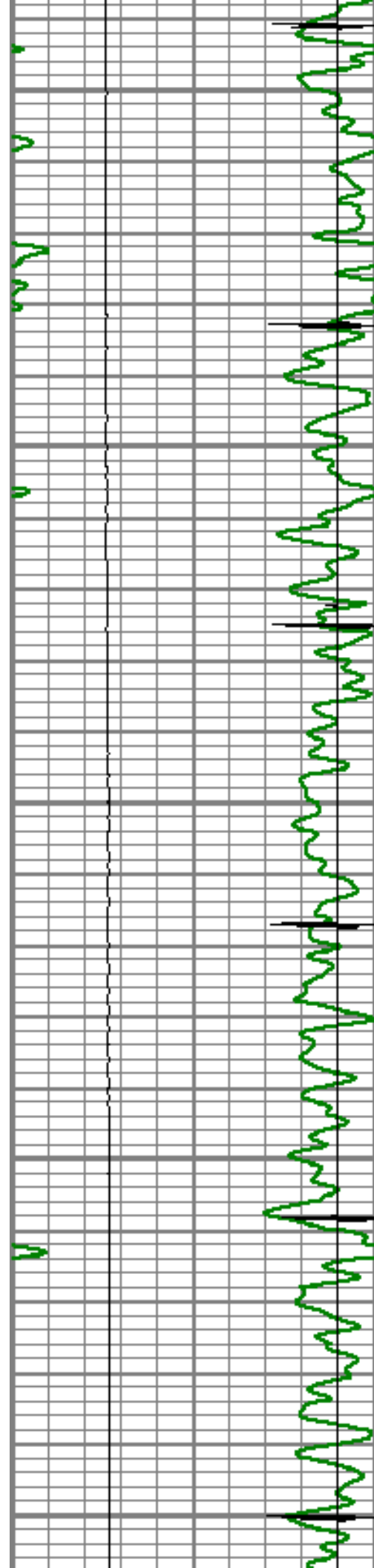
5050

5100

5150







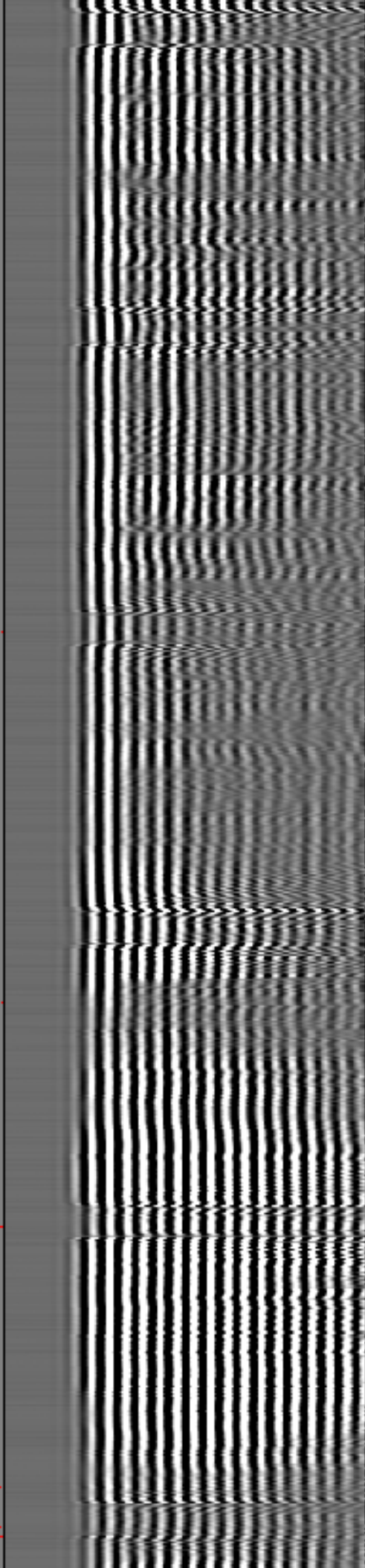
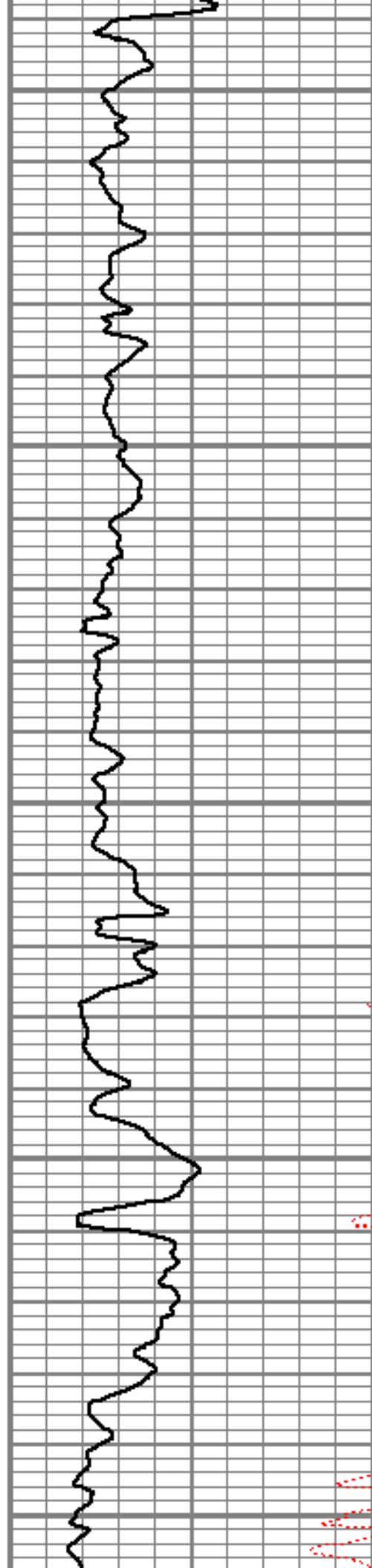
5200

5250

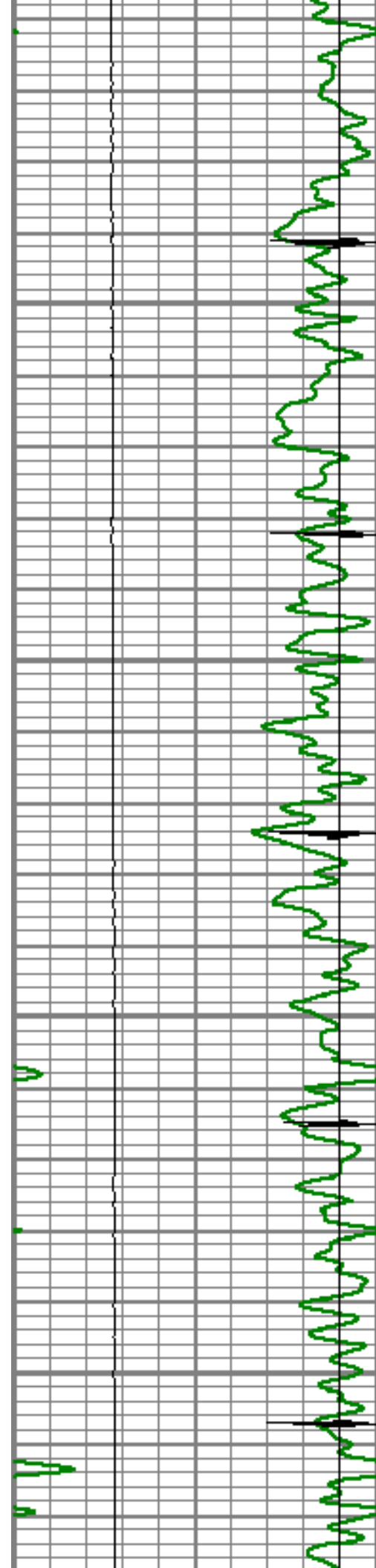
5300

5350

5400





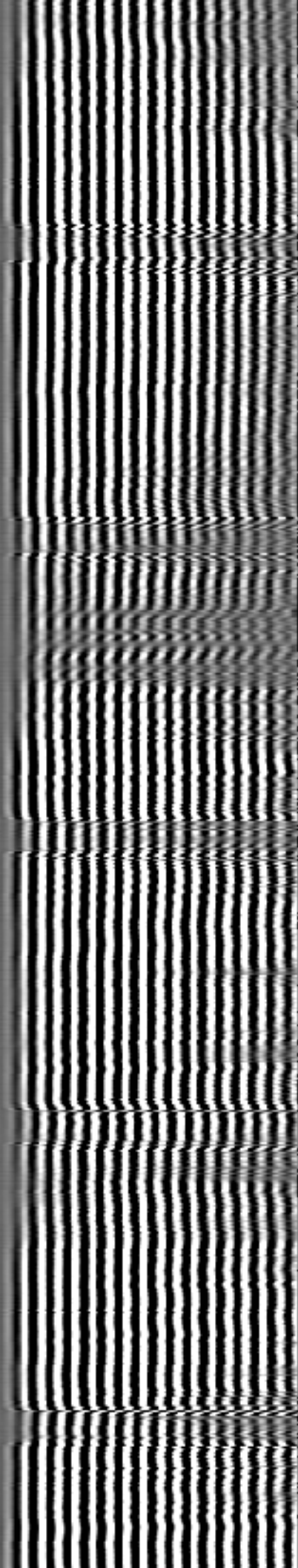
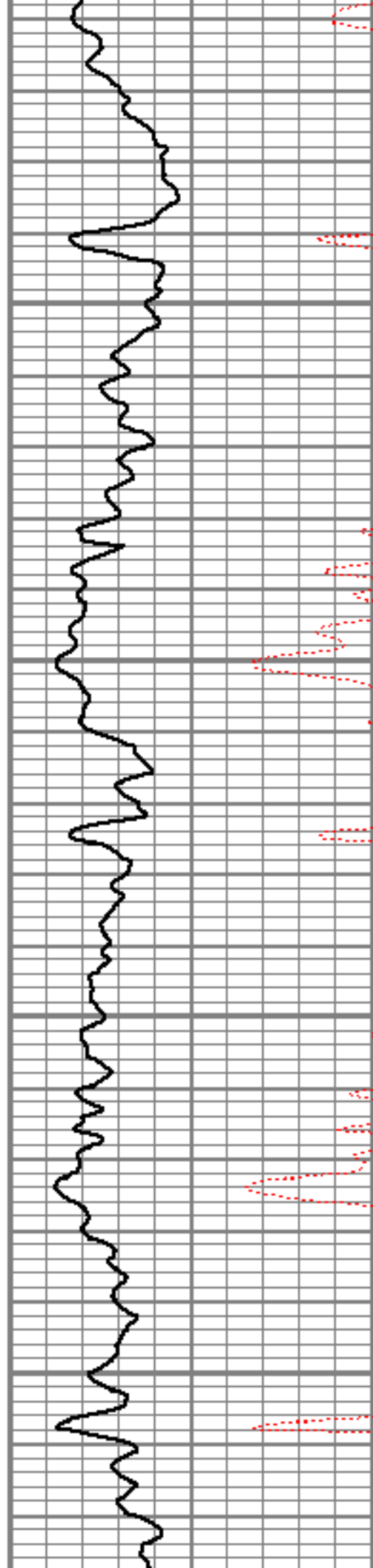


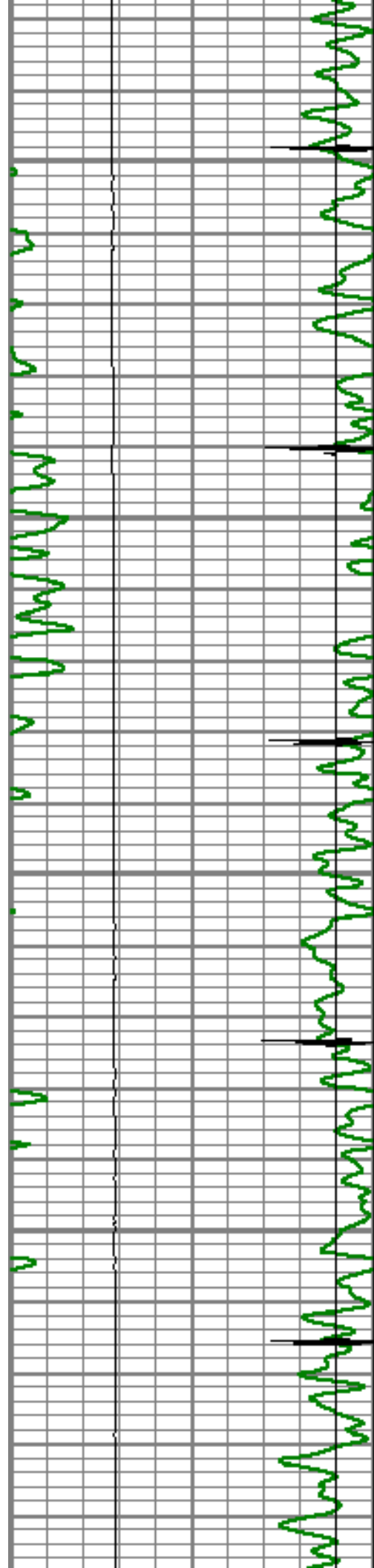
5450

5500

5550

5600



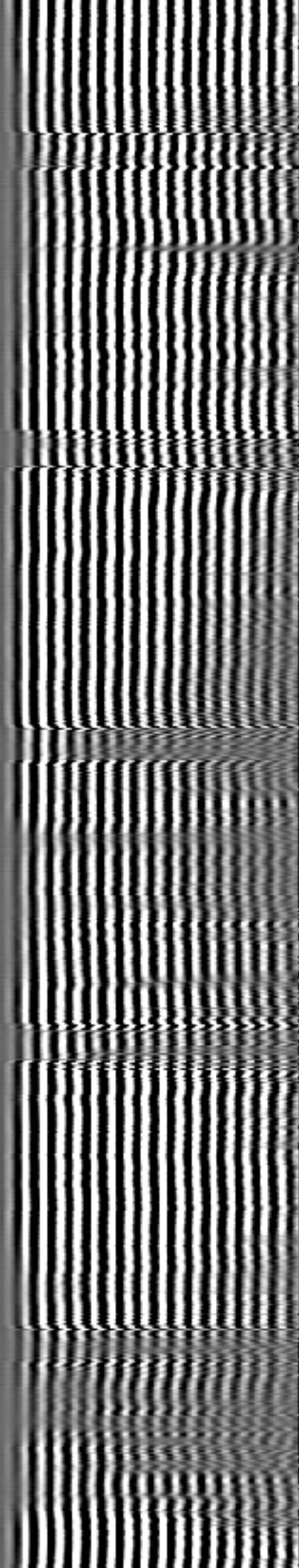
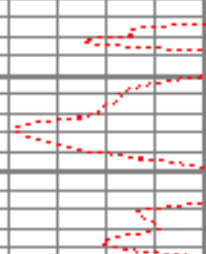
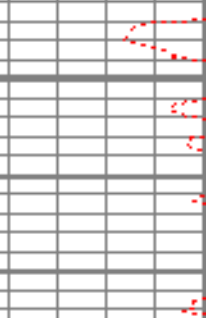
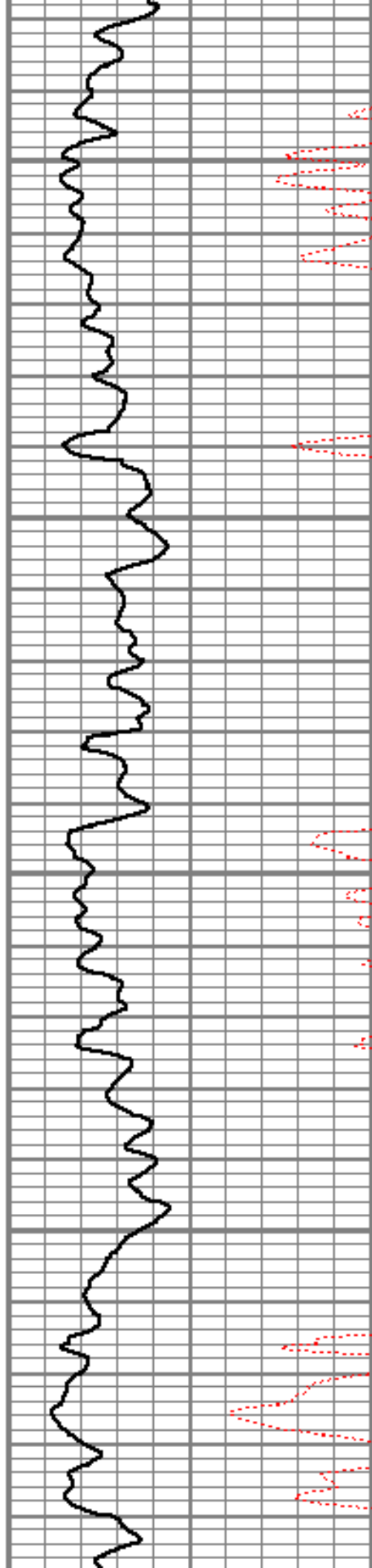


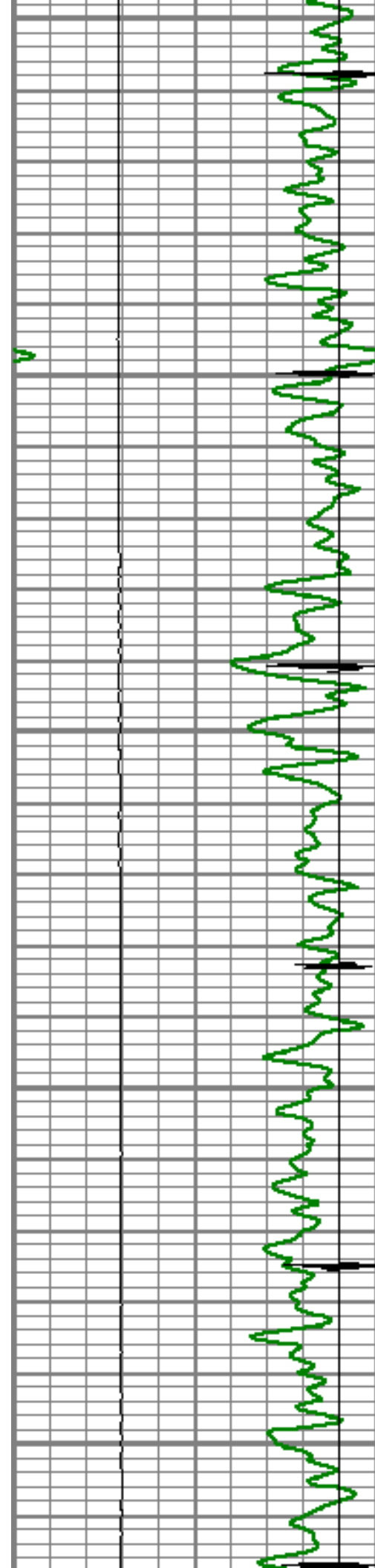
5650

5700

5750

5800





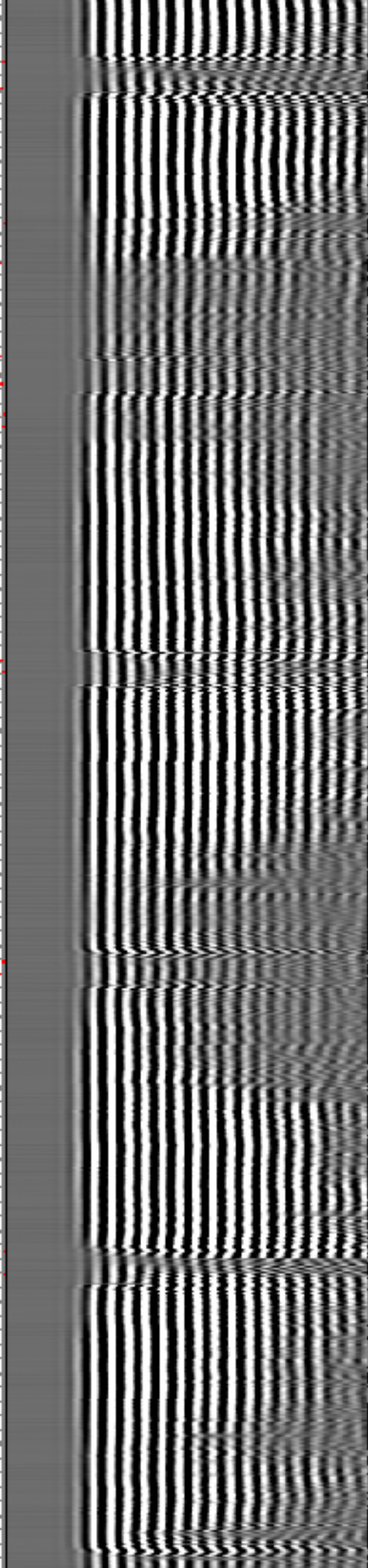
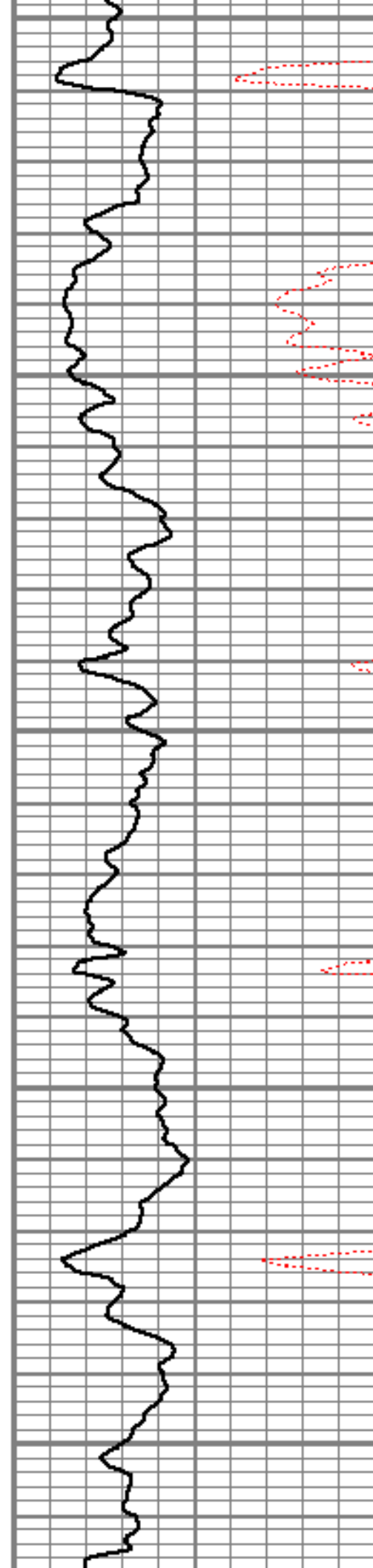
5850

5900

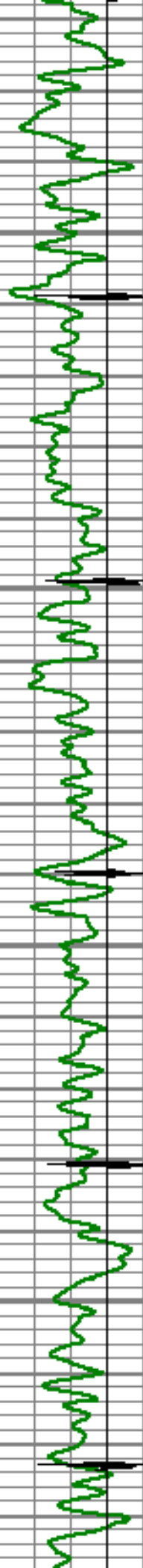
5950

6000

6050





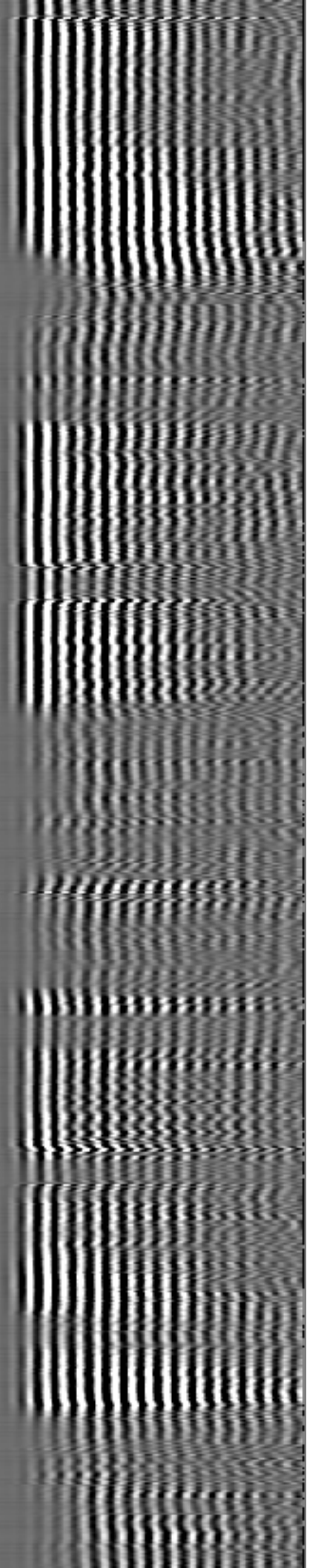
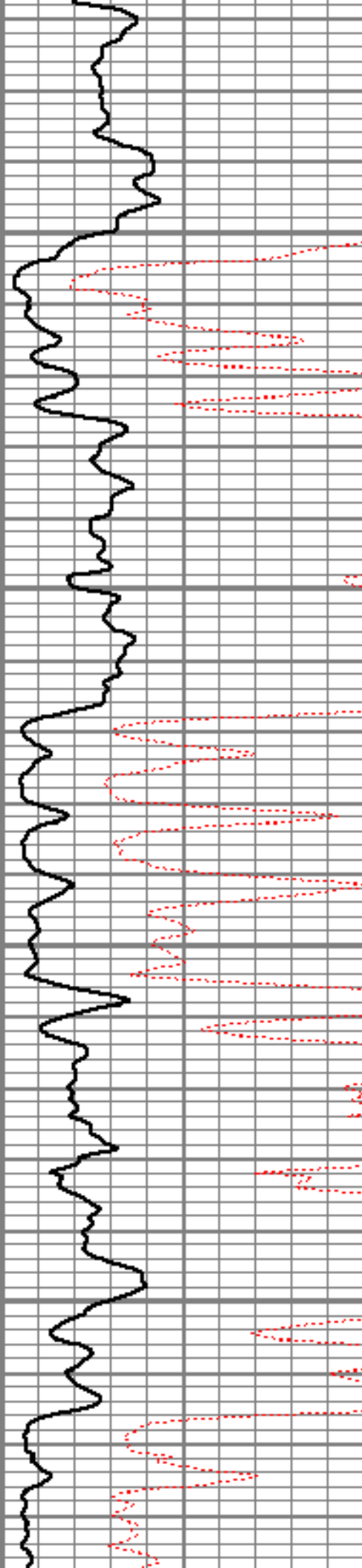


6100

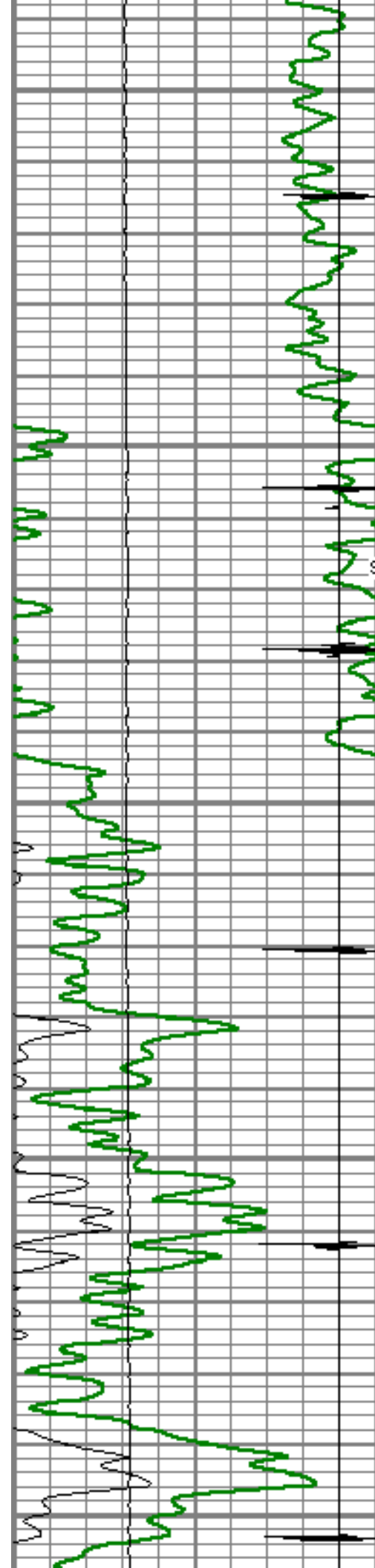
6150

6200

6250







6300

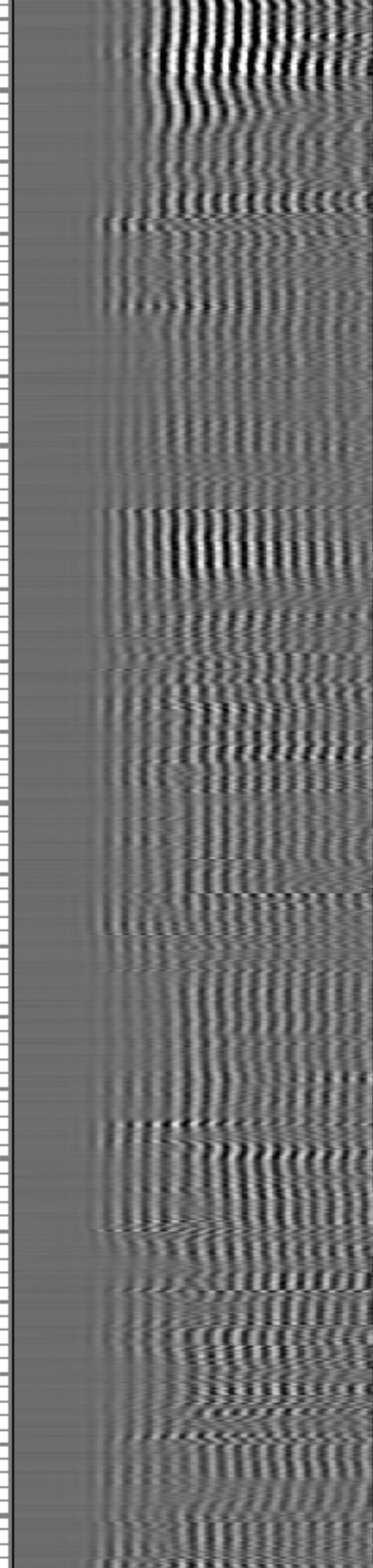
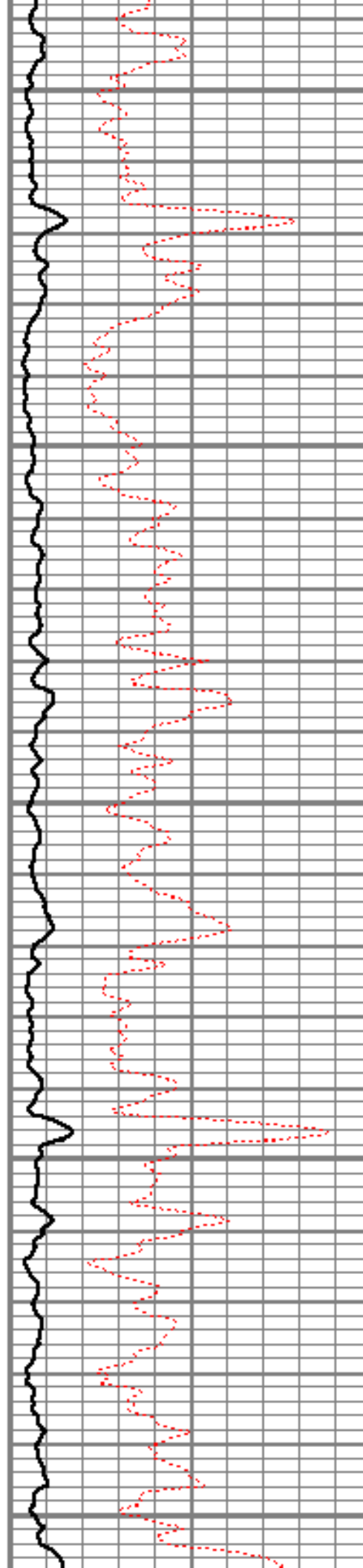
6350

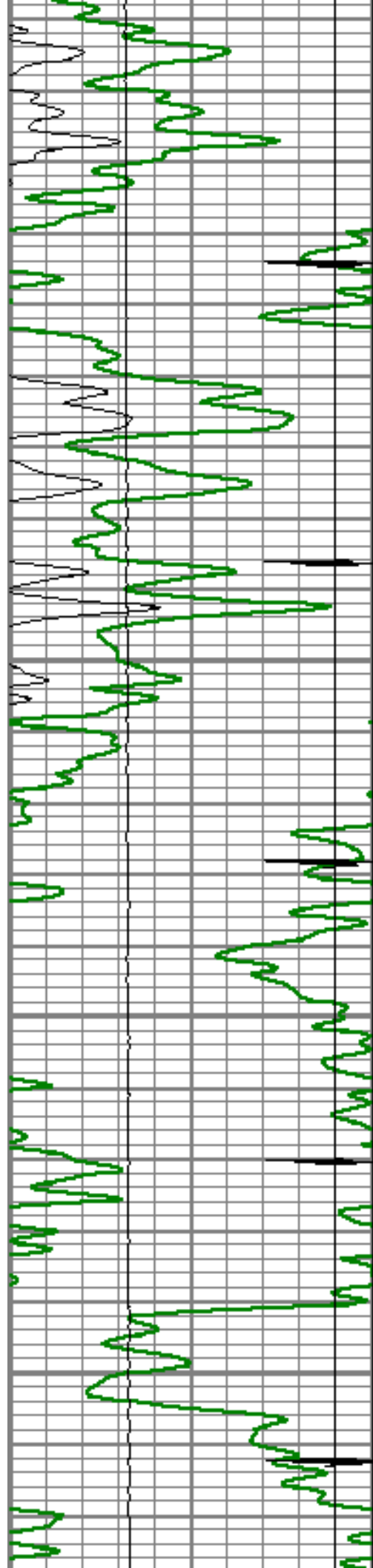
Short Joint

6400

6450

6500



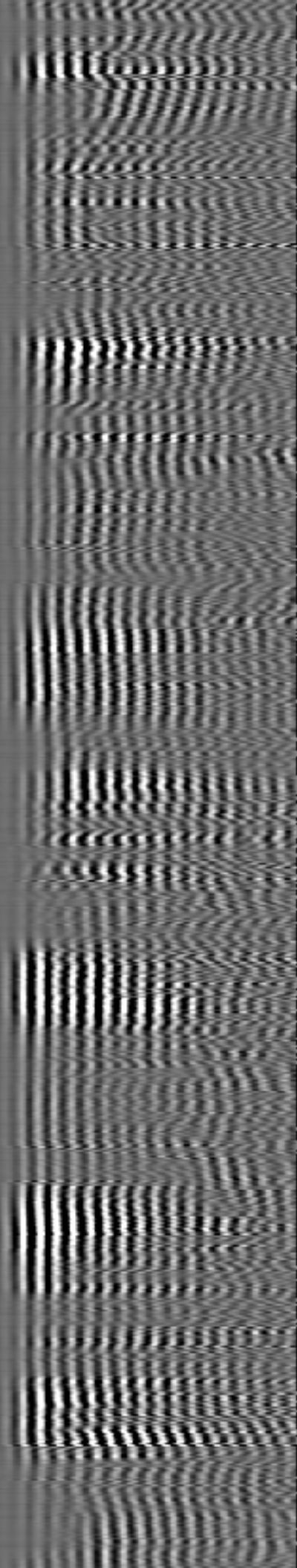
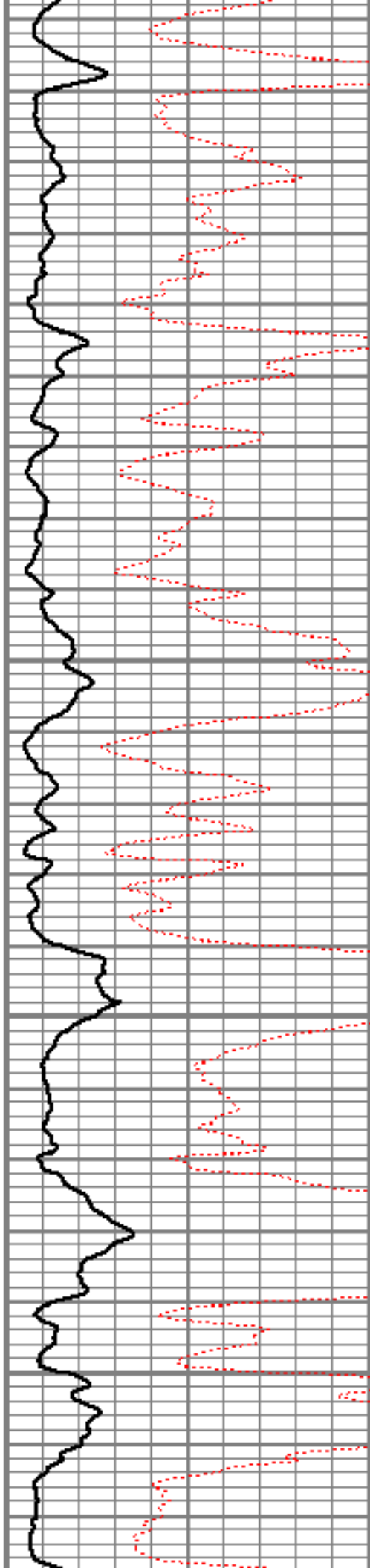


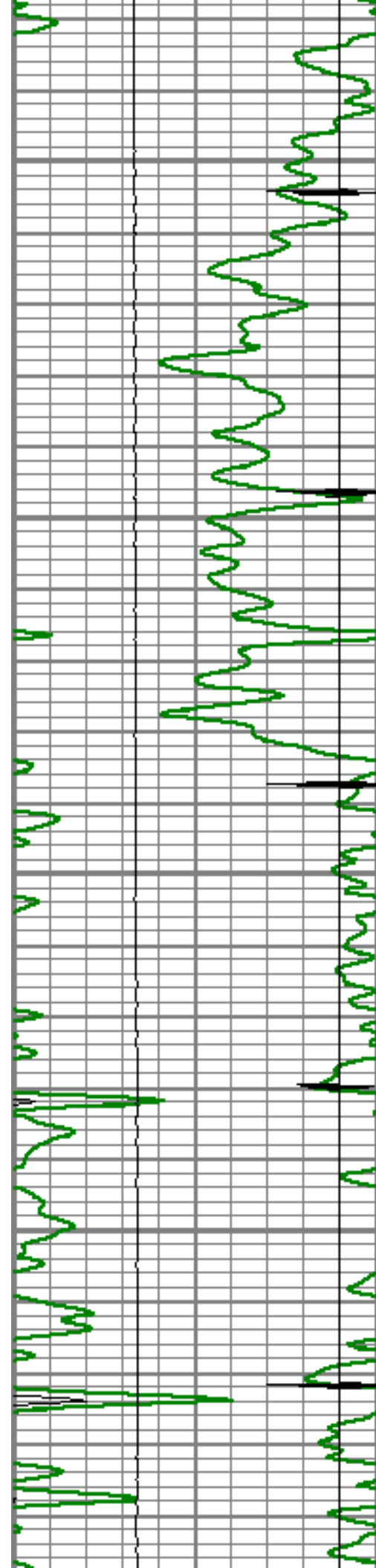
6550

6600

6650

6700



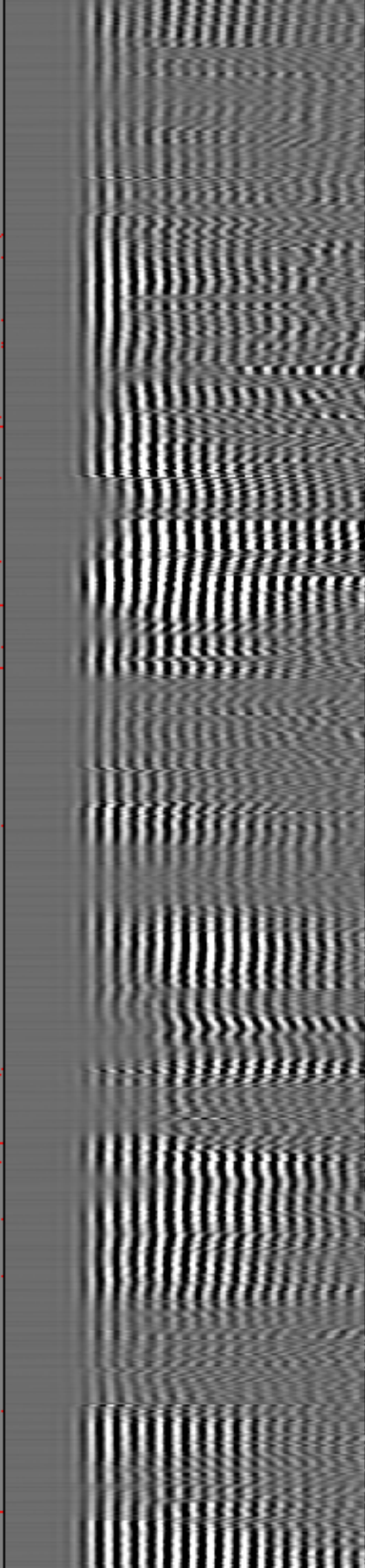
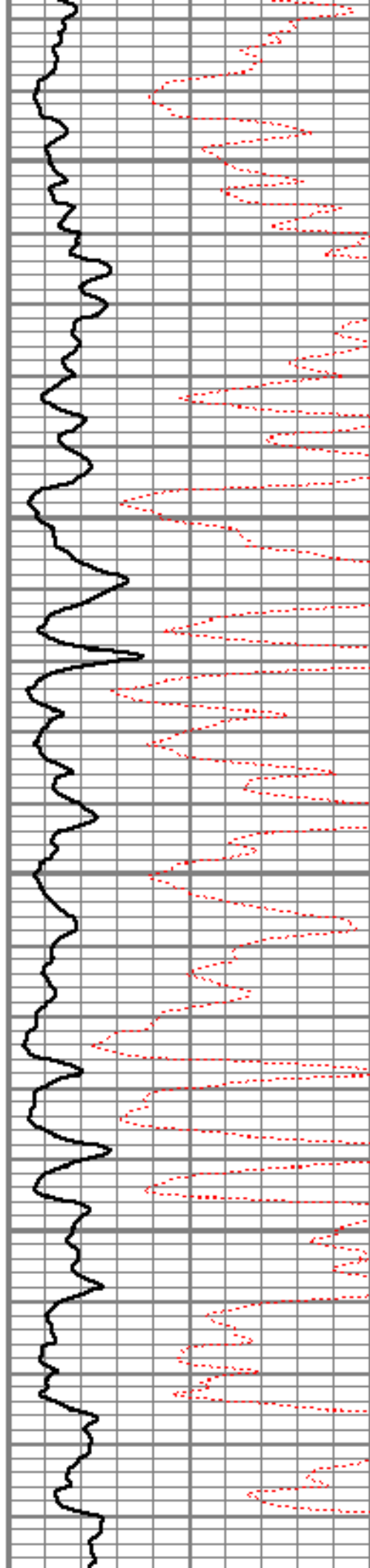


6750

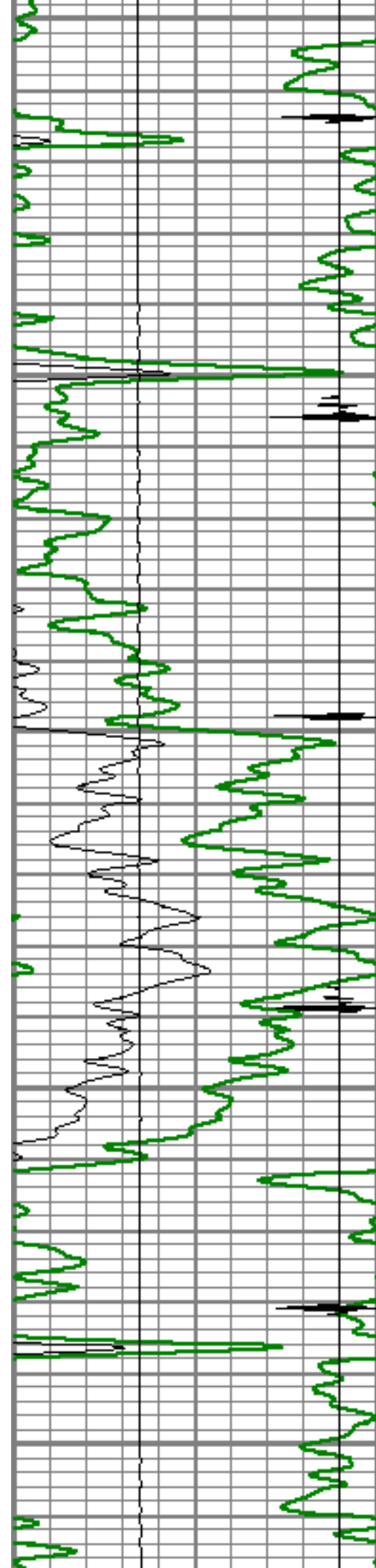
6800

6850

6900







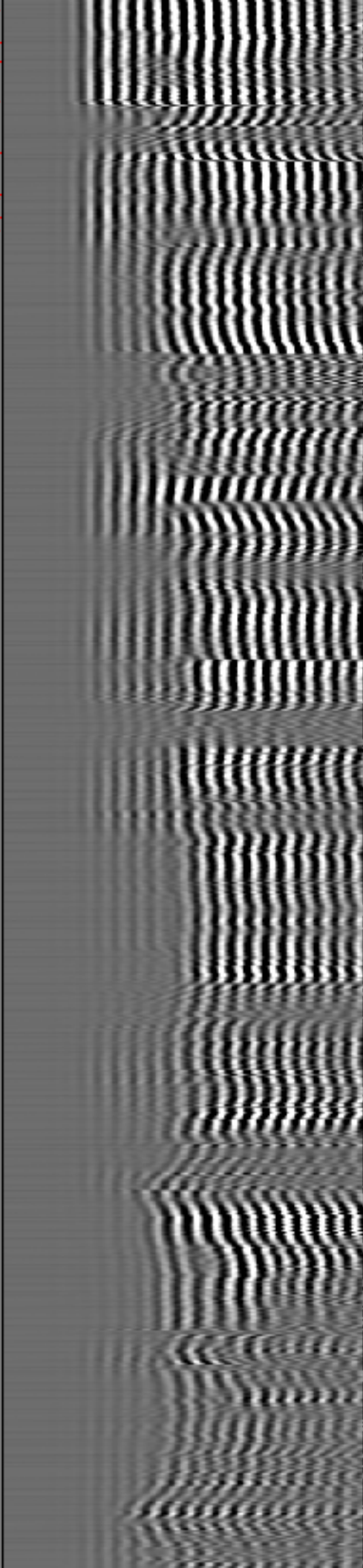
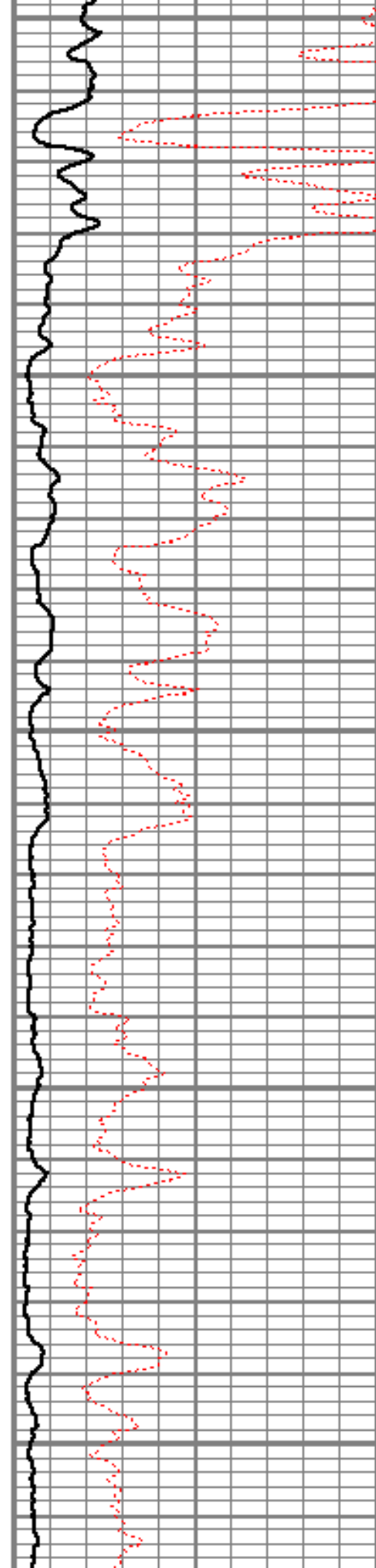
6950

7000

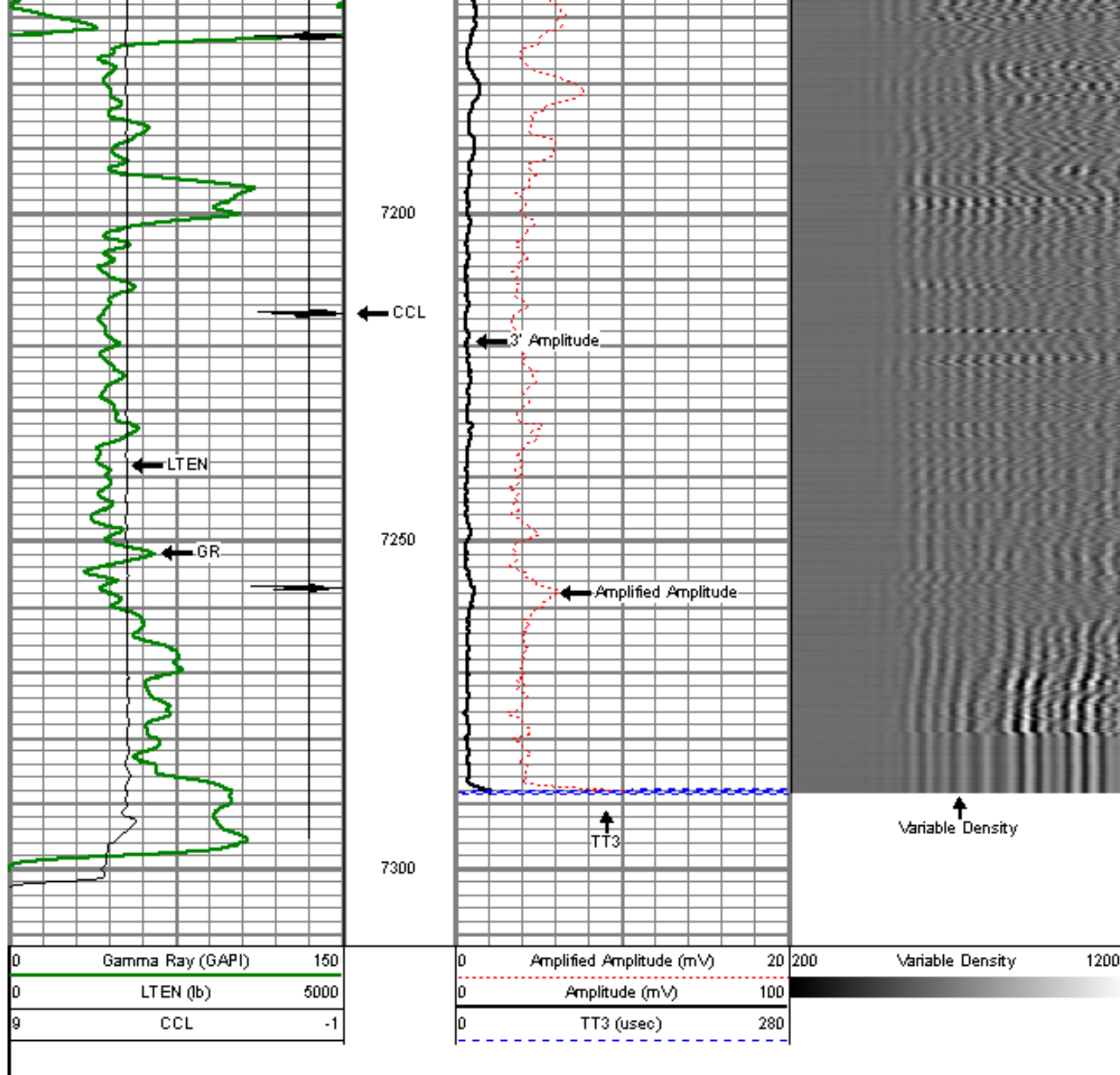
7050

7100

7150



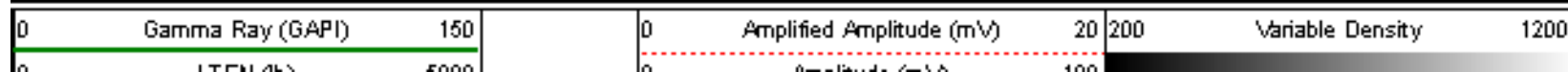




REPEAT PASS

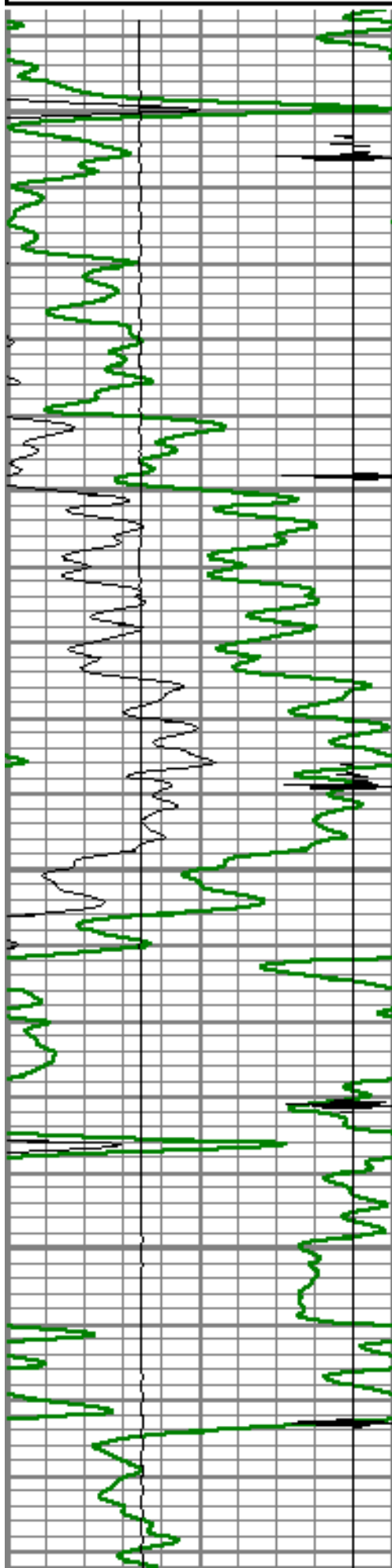
5" = 100'

Database File: kuner 41-25.db  
 Dataset Pathname: pass22  
 Presentation Format: dobl\_prb  
 Dataset Creation: Sat Jul 30 15:03:20 2011 by Log Std Casedhole 09061  
 Charted by: Depth in Feet scaled 1:240



0	LEN (in)	5000
9	CCL	-1

0	Amplitude (mV)	100
0	TT3 (usec)	280

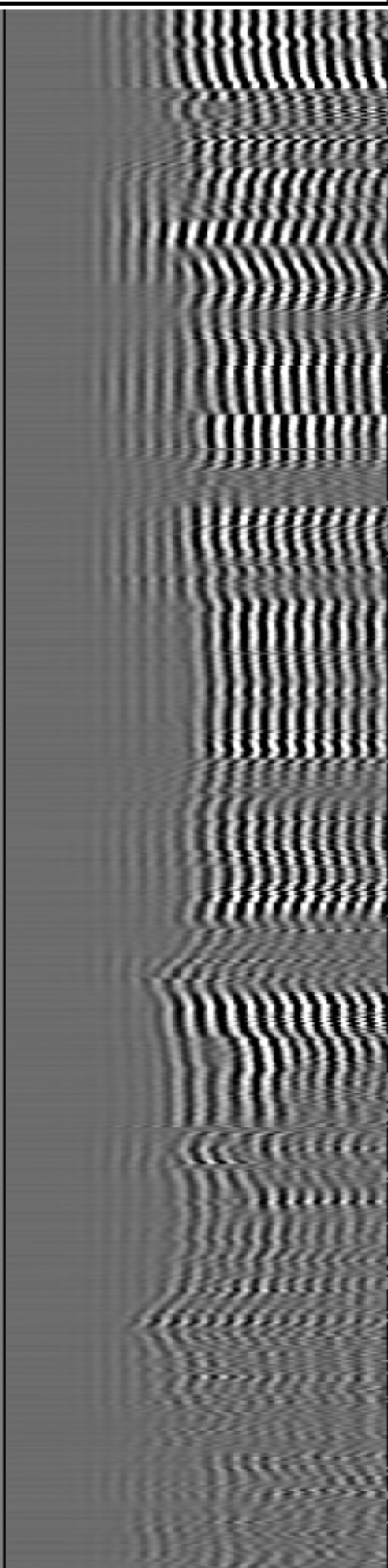
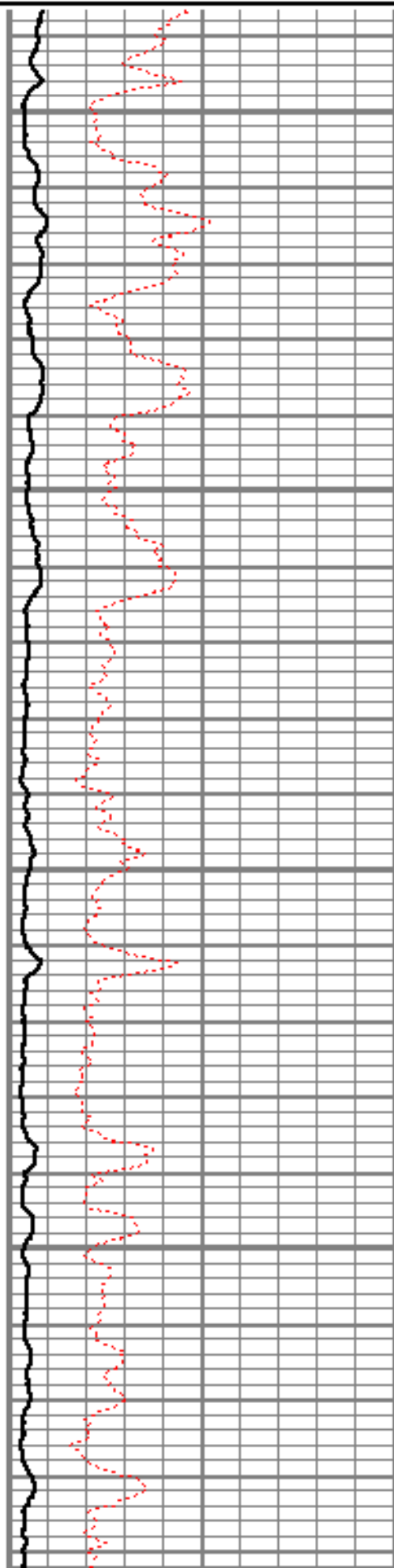


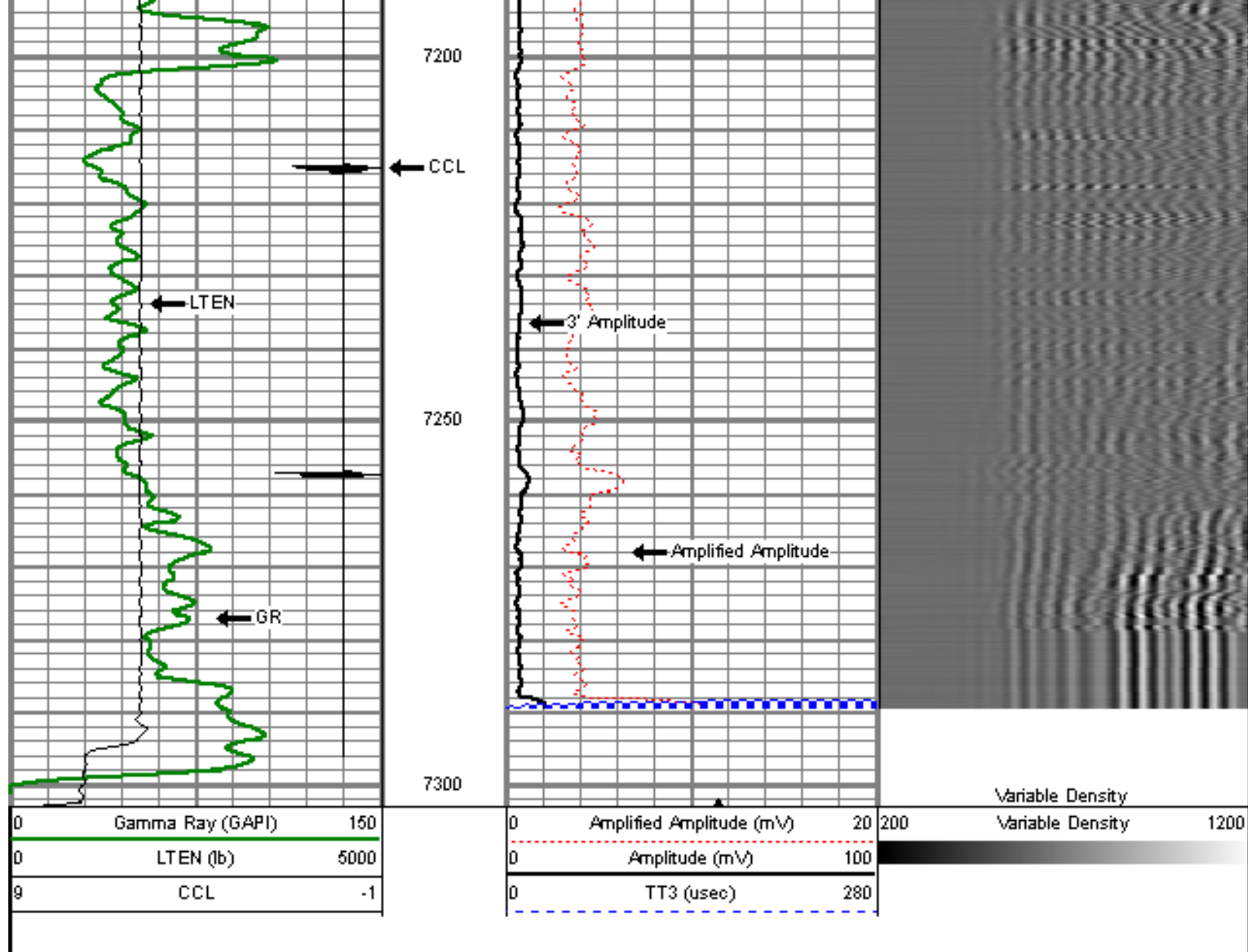
7000

7050

7100

7150





Company  
Well  
Field  
County  
State

ENCANA OIL & GAS (USA) INC  
KUNER 41-25  
WATTENBERG  
WELD  
COLORADO