

# CEMENT BOND LOG (SQUEEZED)

# Mesa Wireline

Company ENCANA OIL & GAS (USA)		Company ENCANA OIL & GAS (USA)	
Well SULLIVAN 4-6-26		Well SULLIVAN 4-6-26	
Field WATTENBERG		Field WATTENBERG	
County WELD		County WELD	
State COLORADO		State COLORADO	
Location: API #: 05-123-30600-0000		Other Services: NONE	
SHL: 580' FSL & 2338' FEL BHL: 1300' FSL & 2450' FEL SEC. 26 TWP. 2N RGE. 68W		Elevation	
Permanent Datum GROUND LEVEL Elevation 4942'		K.B. 4956'	
Log Measured From KELLY BUSHING = 13'		D.F. 4956'	
Drilling Measured From KELLY BUSHING		G.L. 4942'	

Date	25 JULY 2011						
Run Number	ONE						
Depth Driller	8217'						
Depth Logger	5650'						
Bottom Logged Interval	5650'						
Top Log Interval	500'						
Open Hole Size	7.875"						
Type Fluid	WATER						
Density / Viscosity	~8.34 LBS/GAL						
Max. Recorded Temp.	260 DegF						
Estimated Cement Top	4230'						
Time Well Ready	N/A						
Time Logger on Bottom	N/A						
Equipment Number	10801W / PD1						
Location	AULT, CO						
Recorded By	B. MAYNARICH						
Witnessed By	GARY CUMMINGS						
Borehole Record			Tubing Record				
Run Number	Bit	From	To	Size	Weight	From	To
ONE	12.25"	0	1056'	N/A			
TWO	7.875"	0	8217'				
Casing Record	Size	Wgt/Ft	Top	Bottom			
Surface String	8.625"	24#	0	1056'			
Prot. String							
Production String	4.5"	11.6#	0	8202'			
Liner							

<<< Fold Here >>>

All interpretations are opinions based on inferences from electrical or other measurements and we cannot and do not guarantee the accuracy or correctness of any interpretation, and we shall not, except in the case of gross or willful negligence on our part, be liable or responsible for any loss, costs, damages, or expenses incurred or sustained by anyone resulting from any interpretation made by any of our officers, agents or employees. These interpretations are also subject to our general terms and conditions set out in our current Price Schedule.

## Comments

LOG CORRELATED TO MESA WIRELINE CBL PASS 6 DATED 20 JULY 2011.  
LOG WAS RAN AFTER A SQUEEZED CEMENT JOB.

WE APPRECIATE YOUR BUSINESS, MESA WIRELINE LLC, GRAND JUNCTION CO. (970) 257-0458

## MAIN PASS

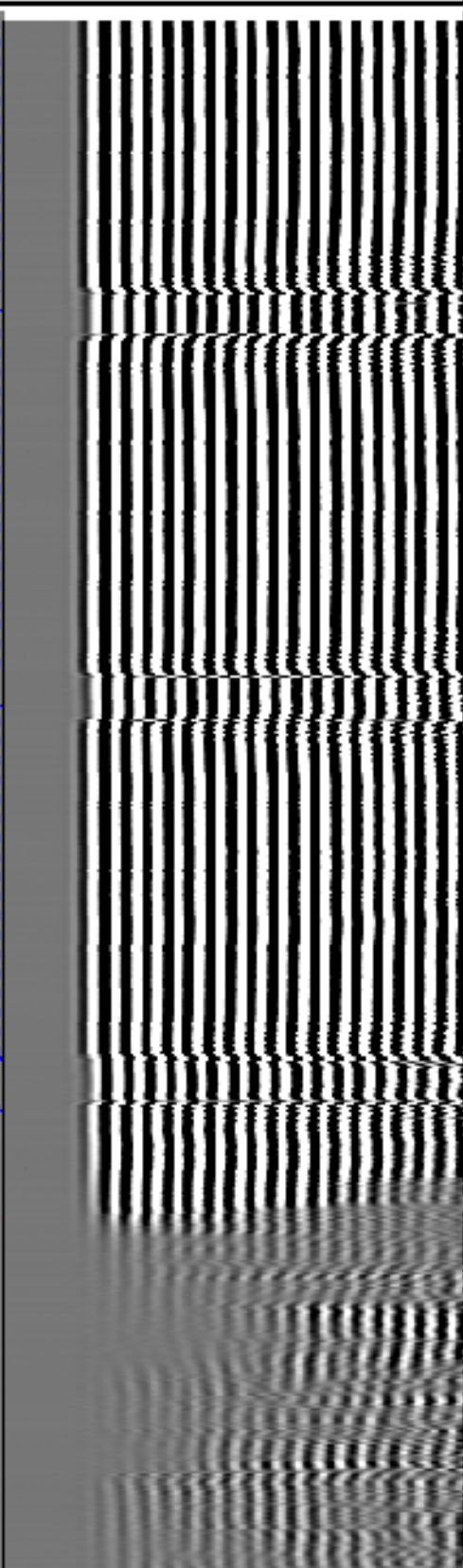
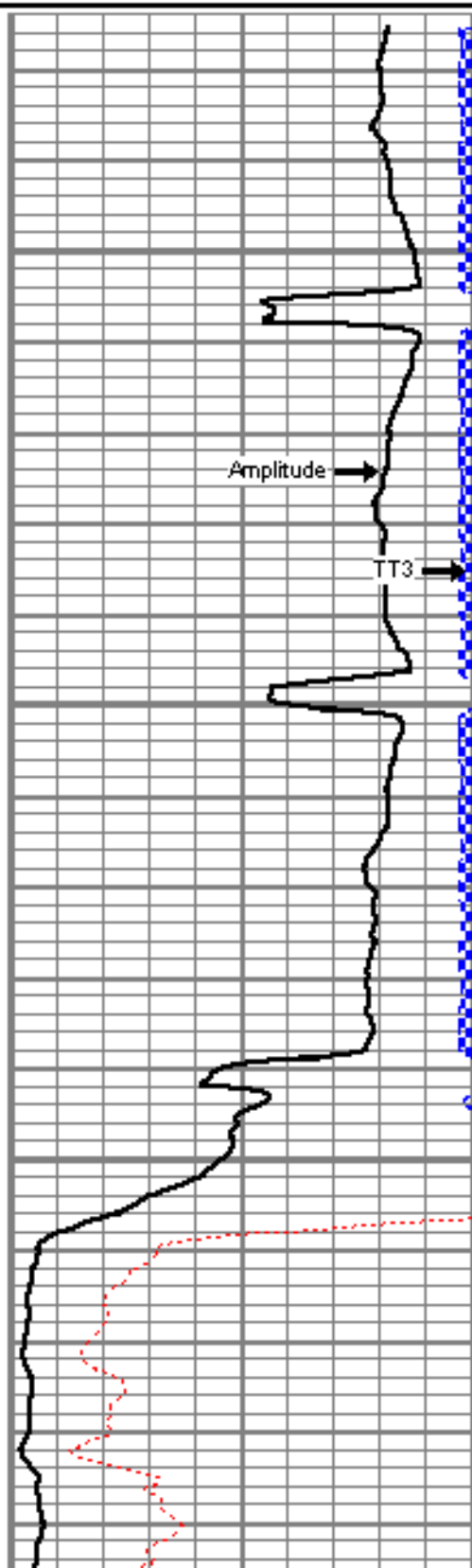
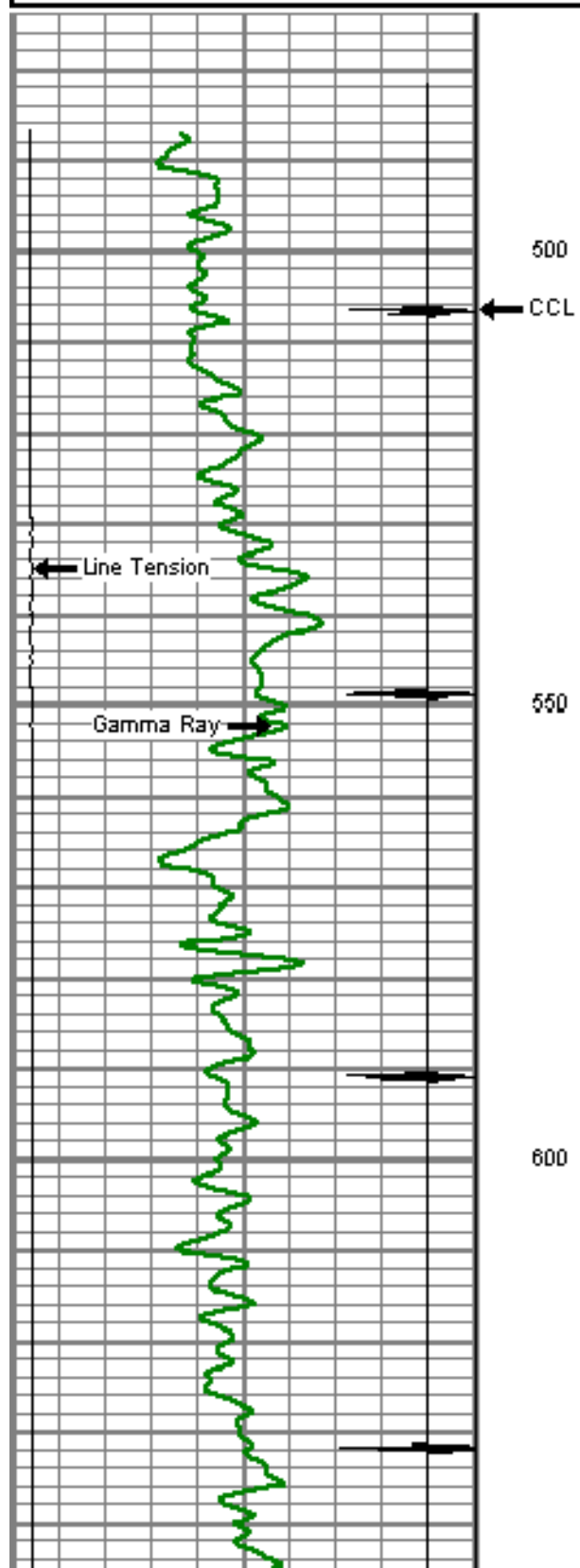


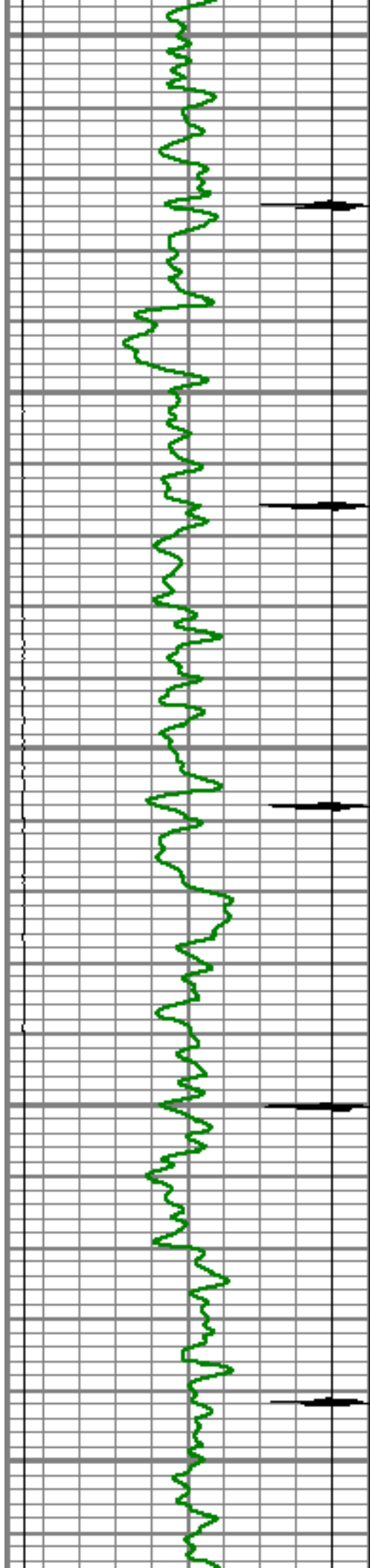
Database File: sullivan4-6squeeze.db  
Dataset Pathname: pass6  
Presentation Format: dcbl\_prb  
Dataset Creation: Mon Jul 25 13:05:57 2011 by Log Std Casedhole 09061  
Charted by: Depth in Feet scaled 1:240

0	Gamma Ray (GAPI)	150
0	LTEN (lb)	5000
9	CCL	-1

0	Amplified Amplitude (mV)	20
0	Amplitude (mV)	100
0	TT3 (usec)	280

200 Variable Density 1200





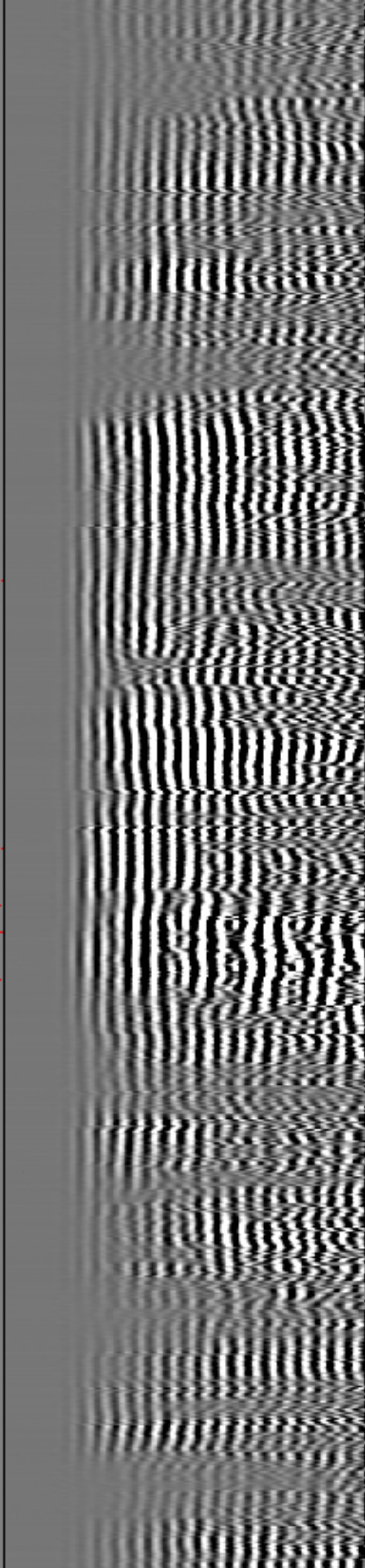
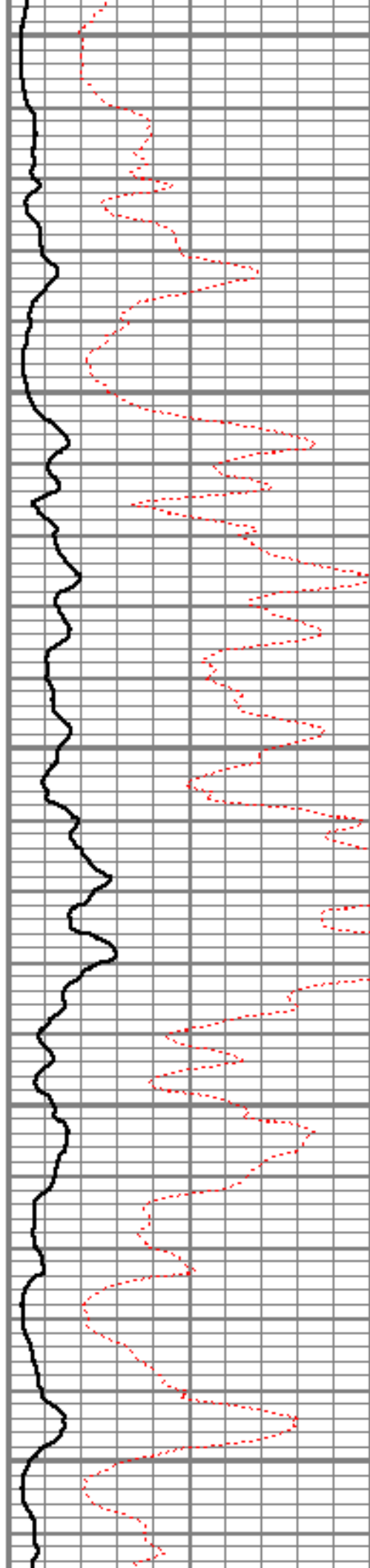
650

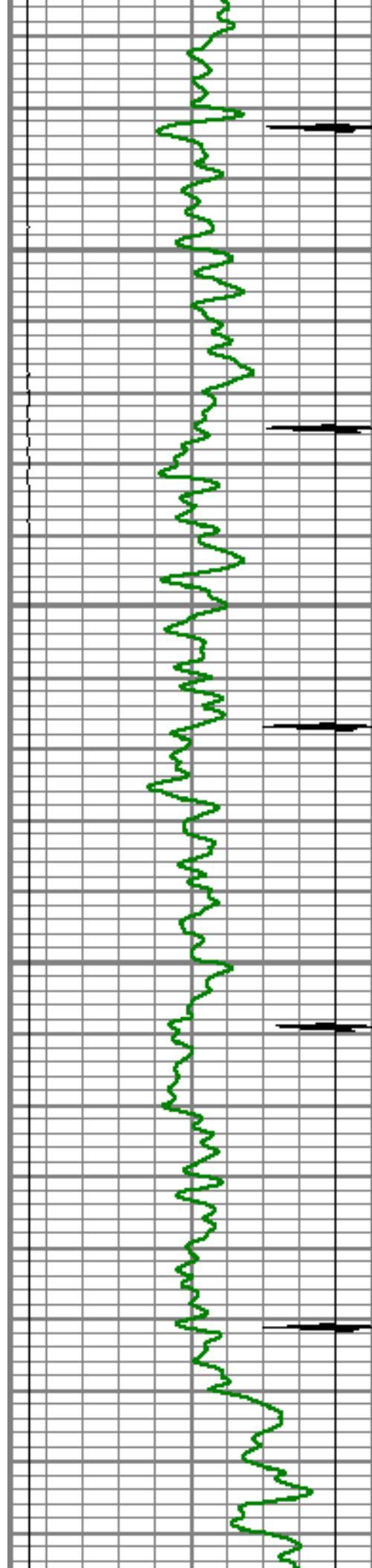
700

750

800

850



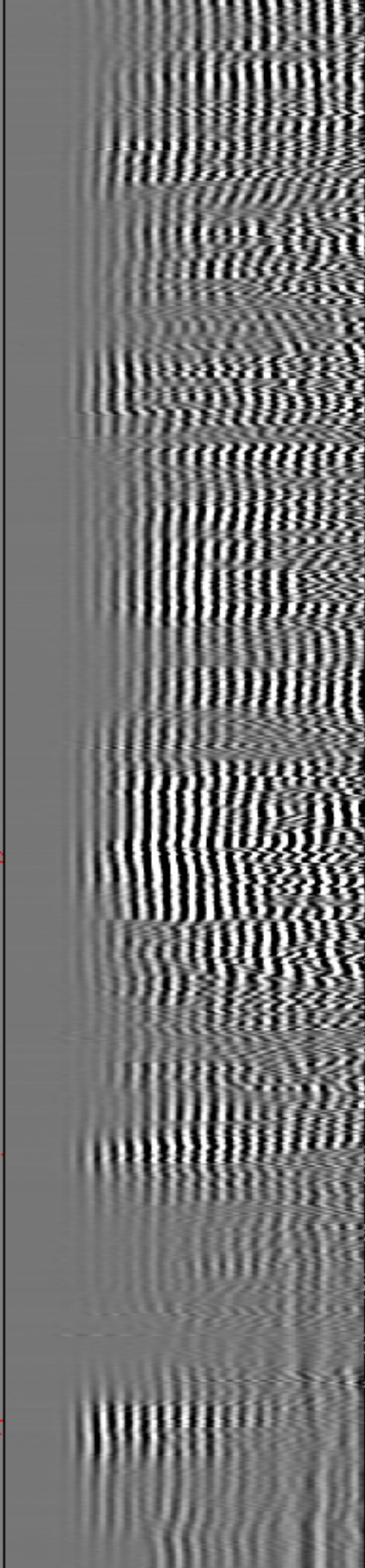
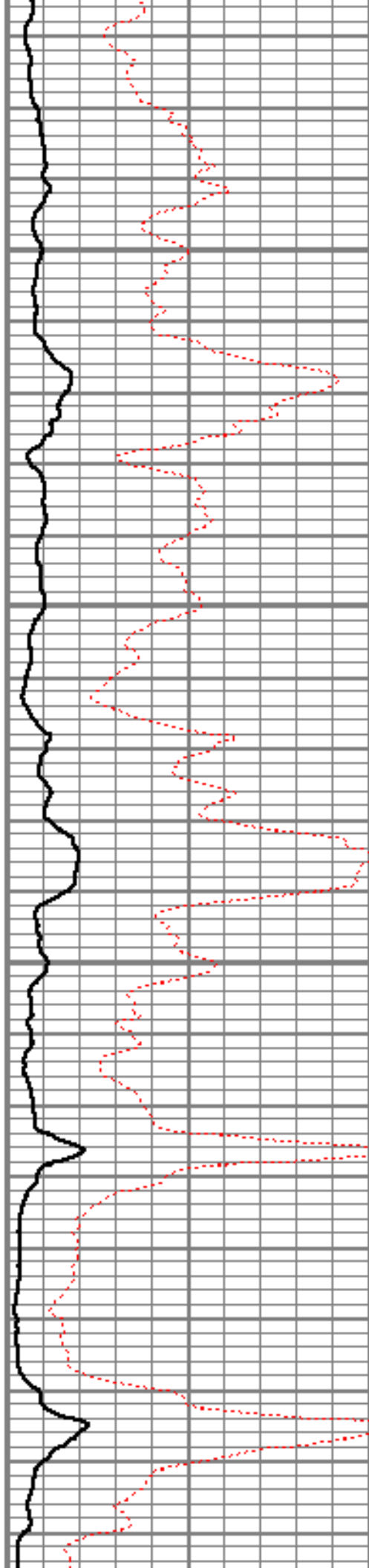


900

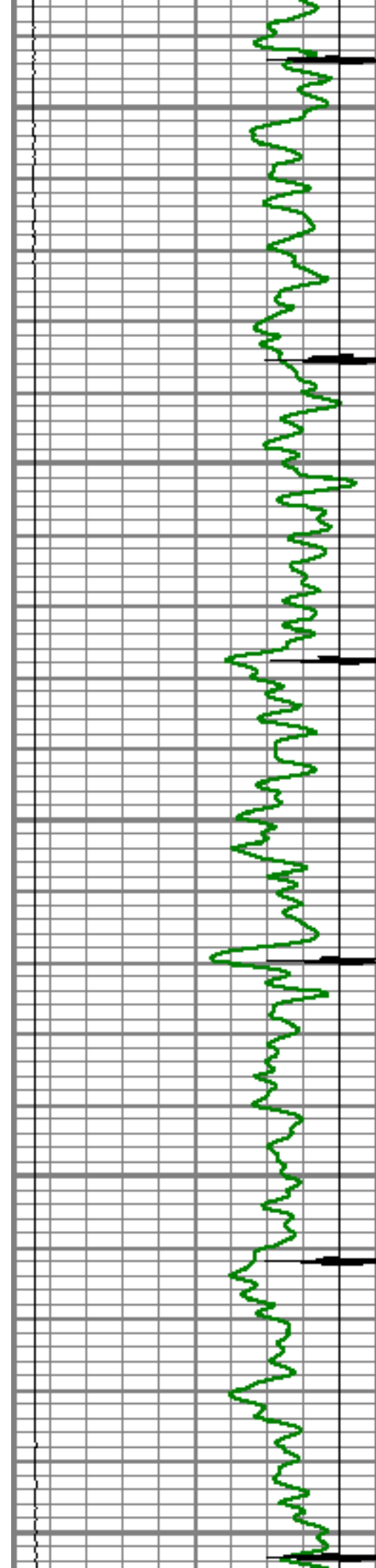
950

1000

1050







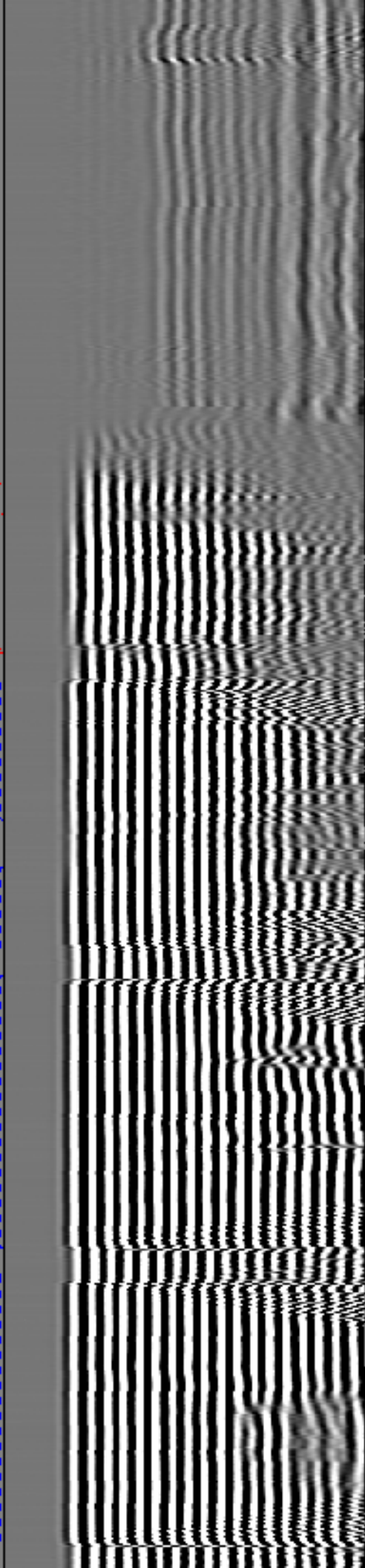
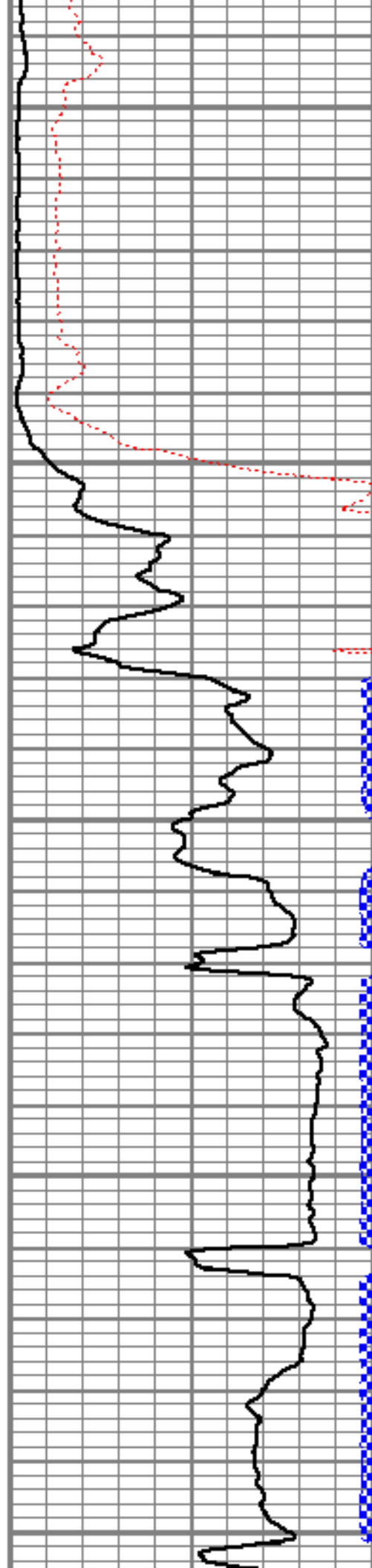
1100

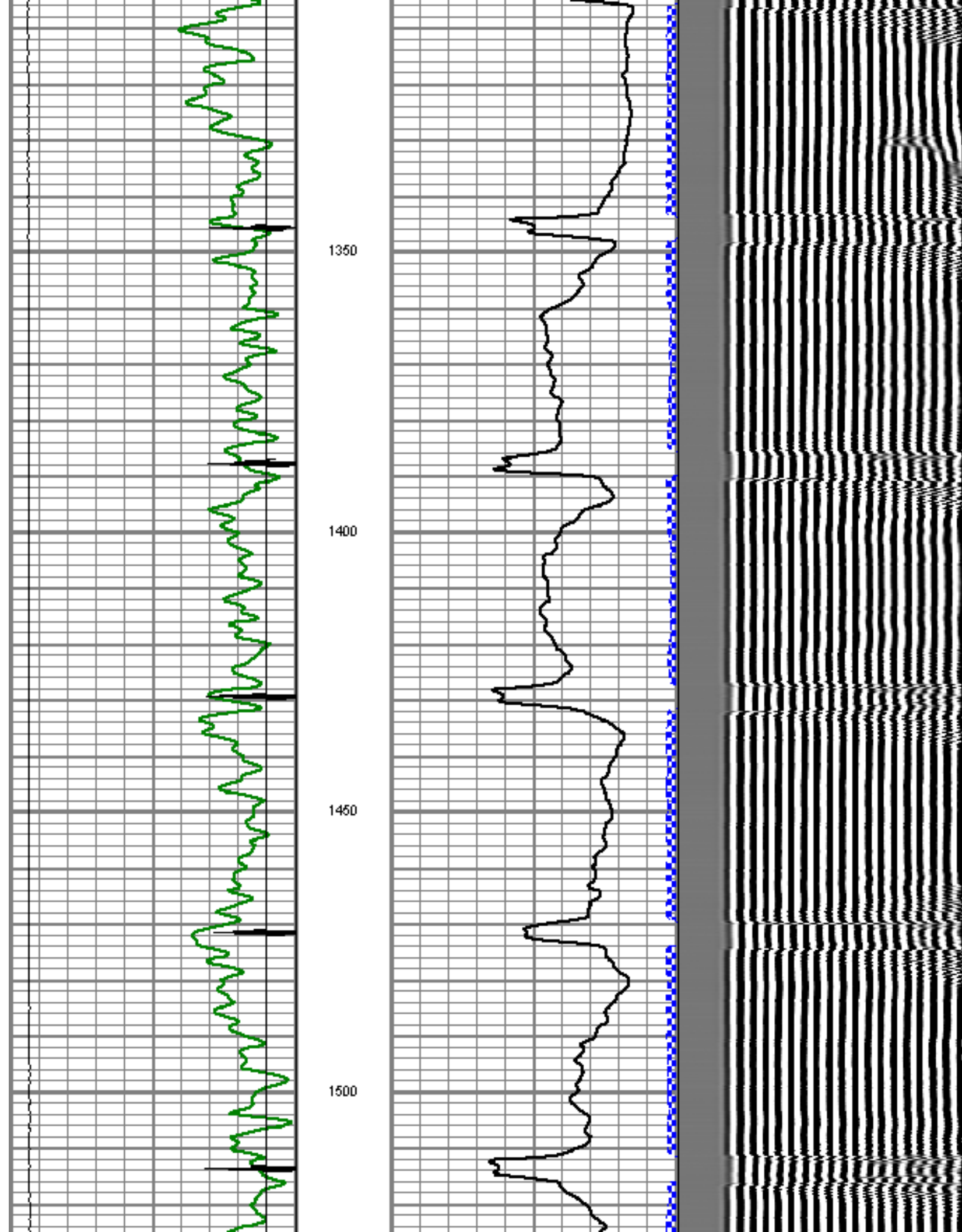
1150

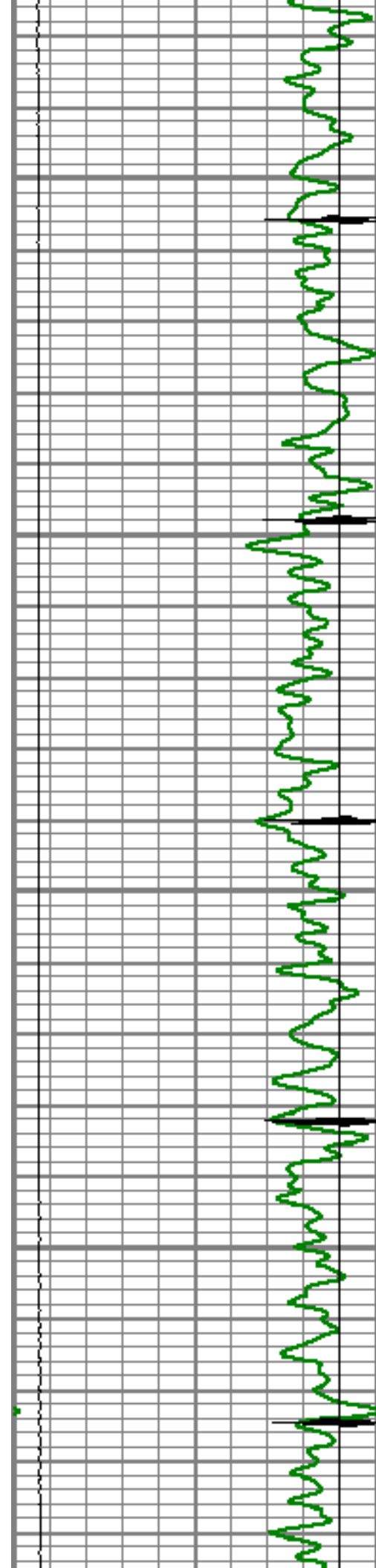
1200

1250

1300





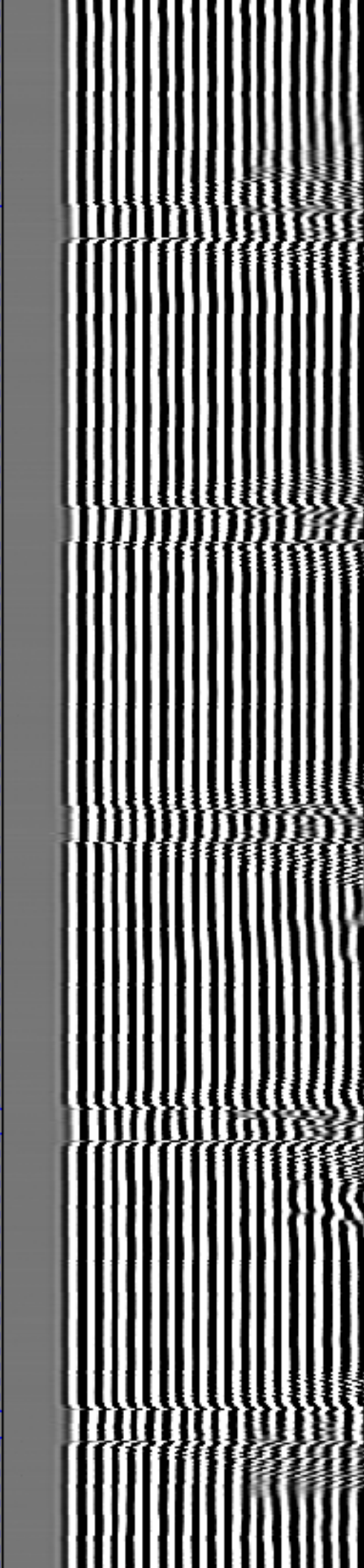
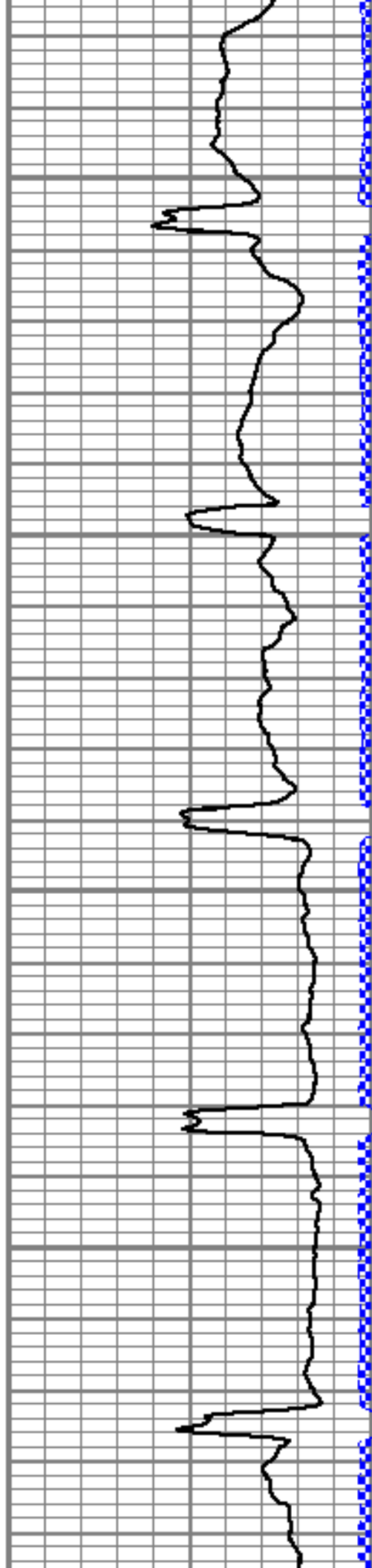


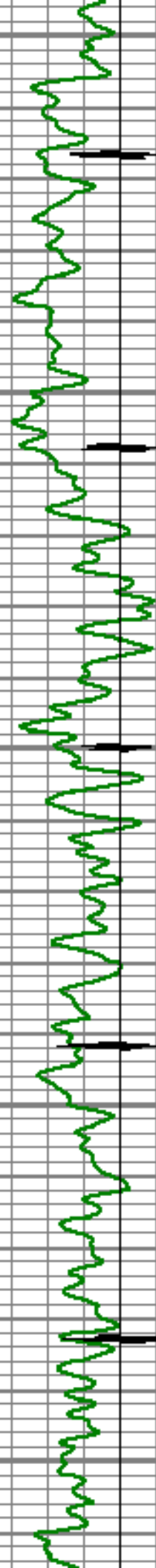
1550

1600

1650

1700





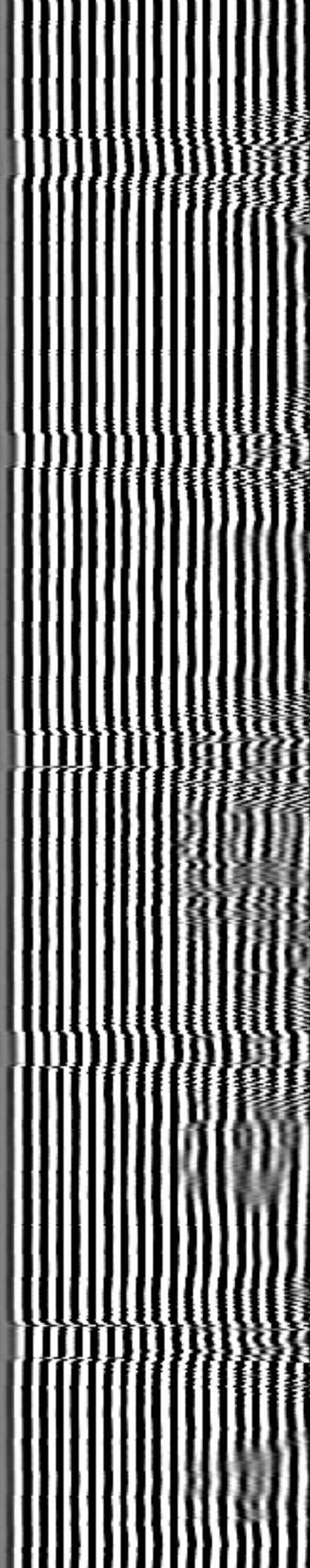
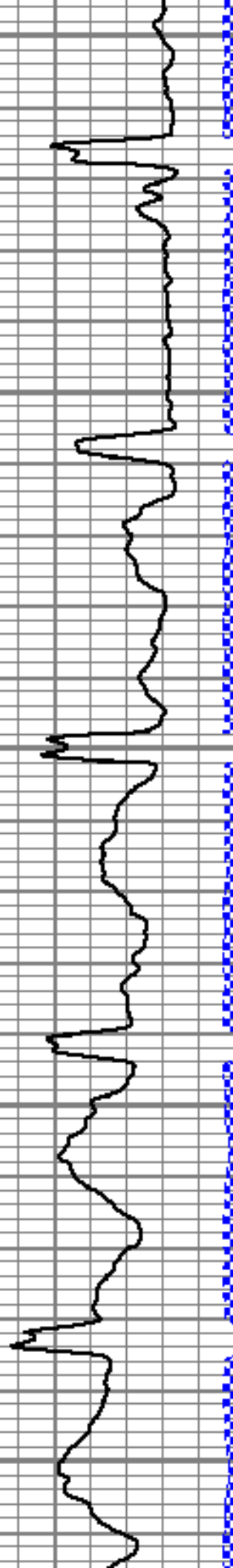
1750

1800

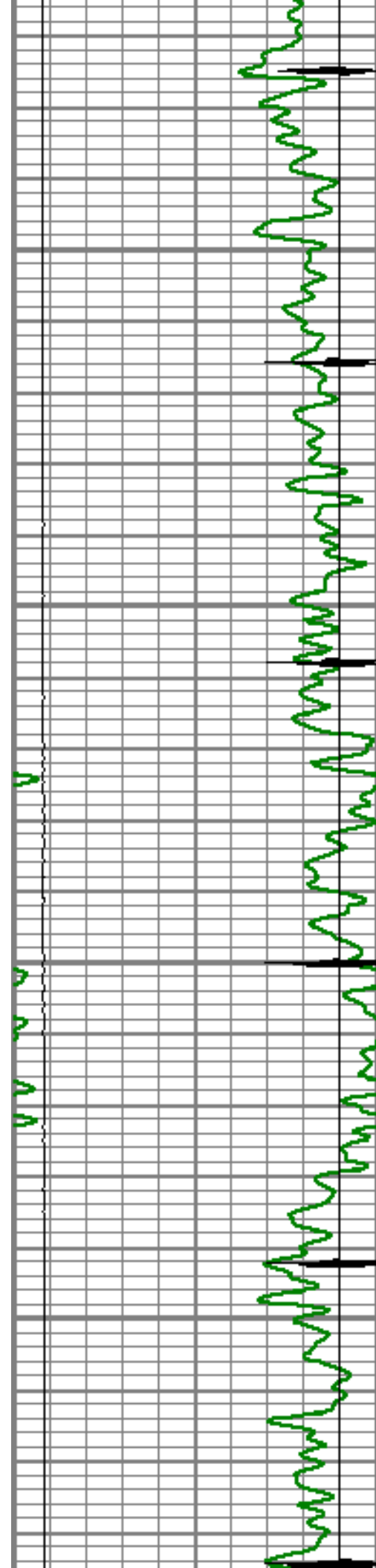
1850

1900

1950





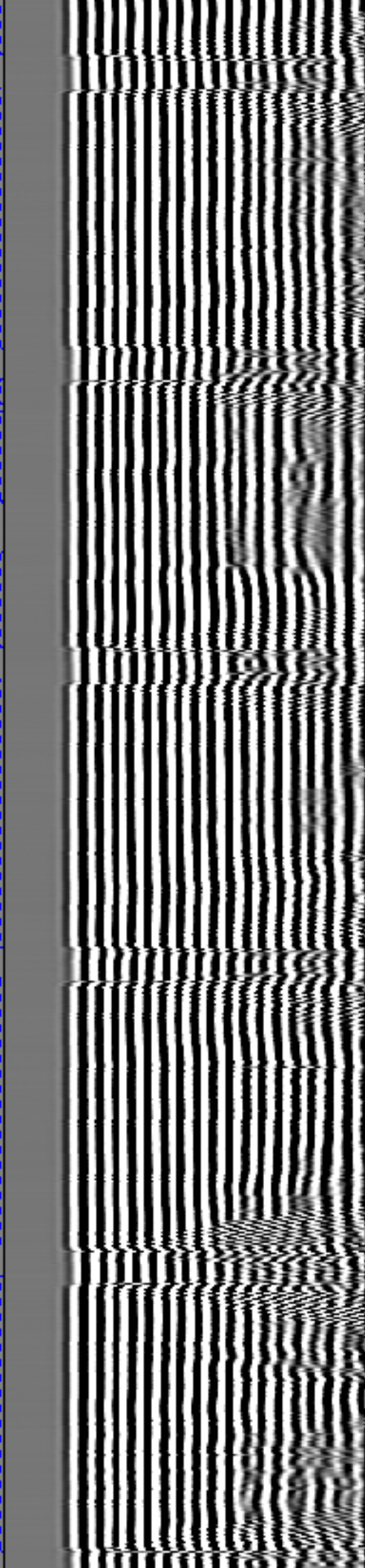
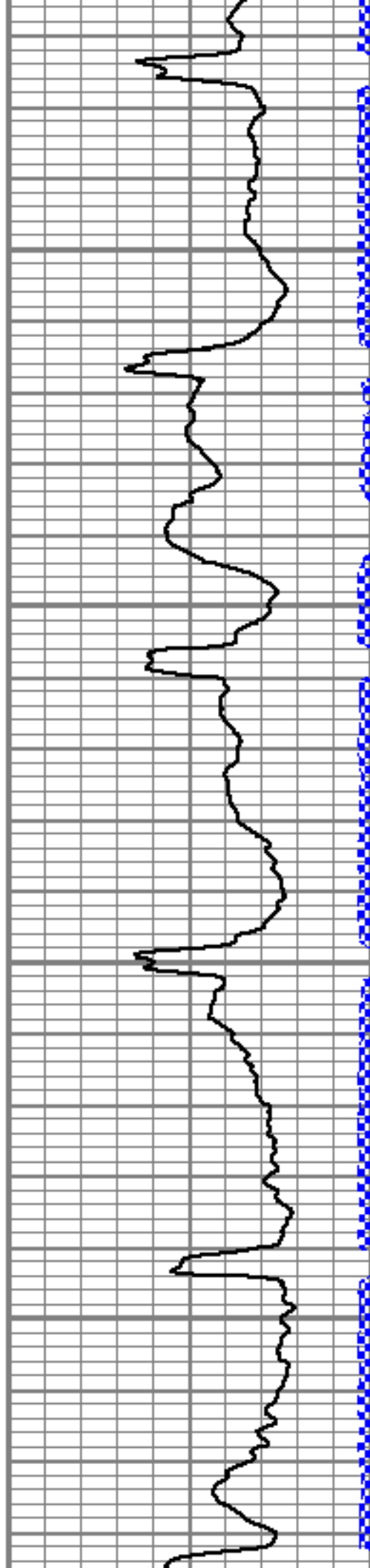


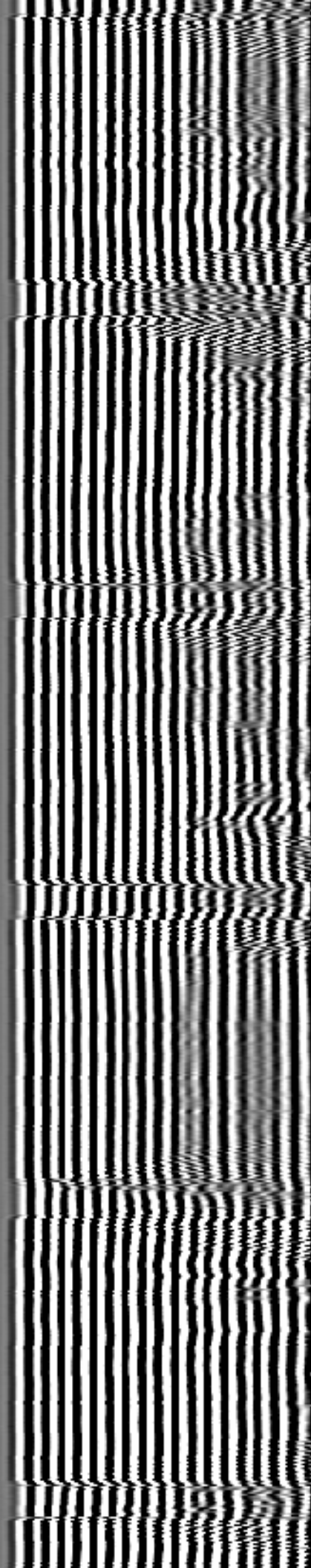
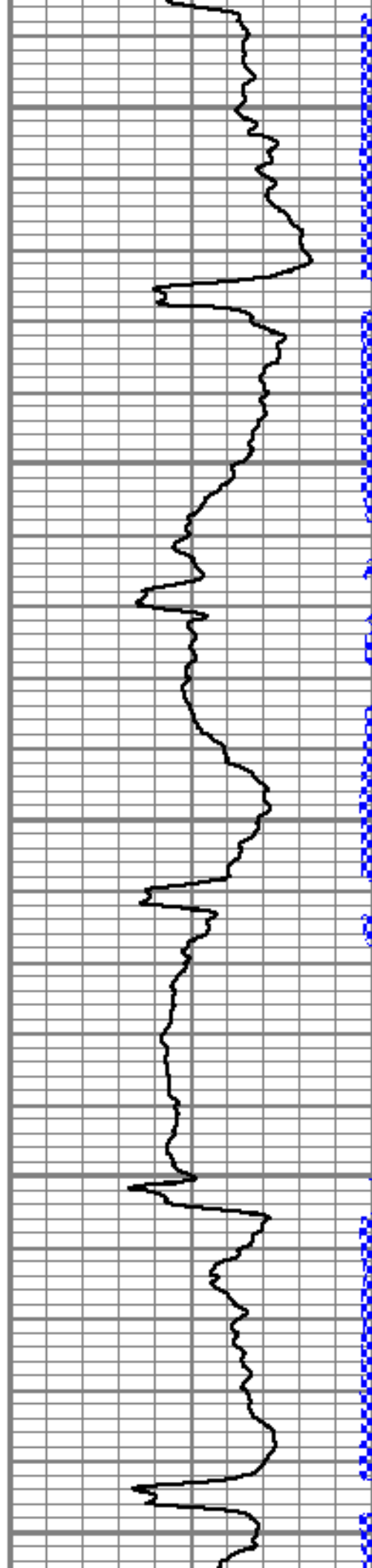
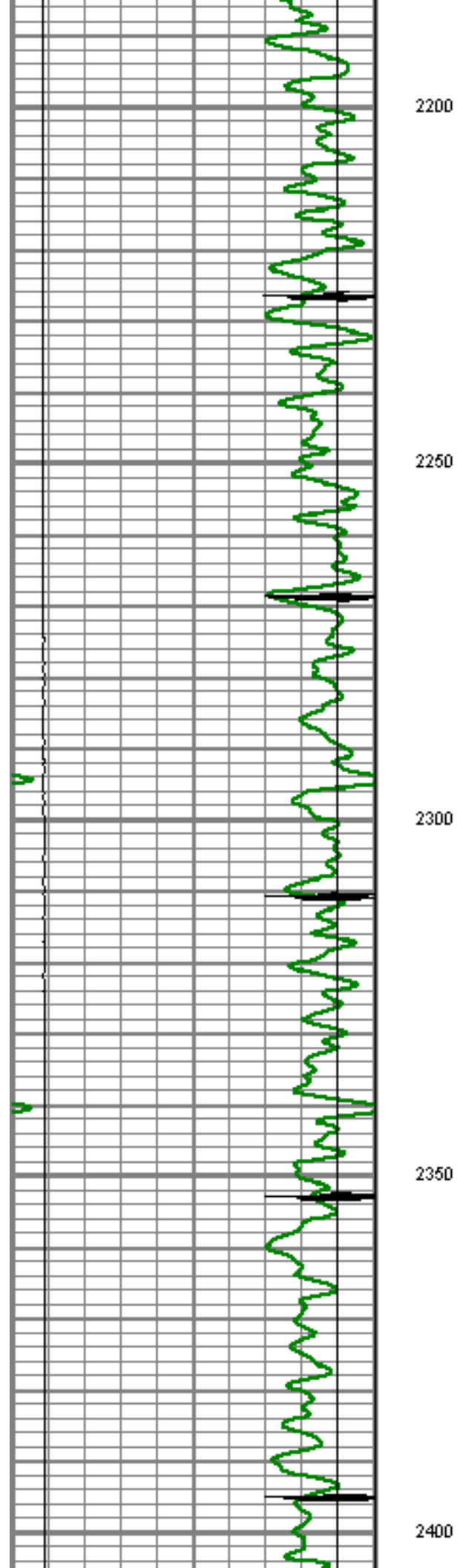
2000

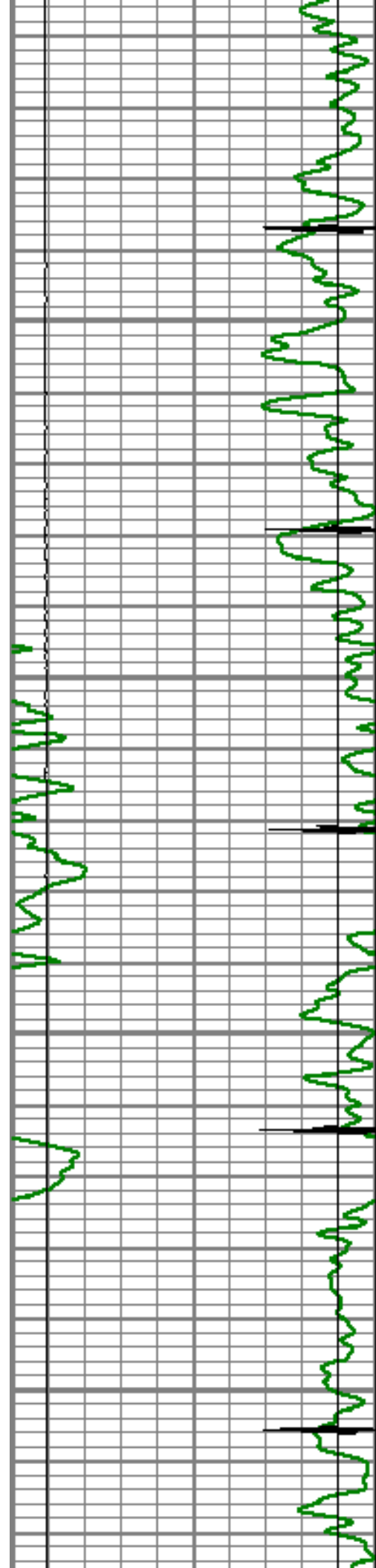
2050

2100

2150





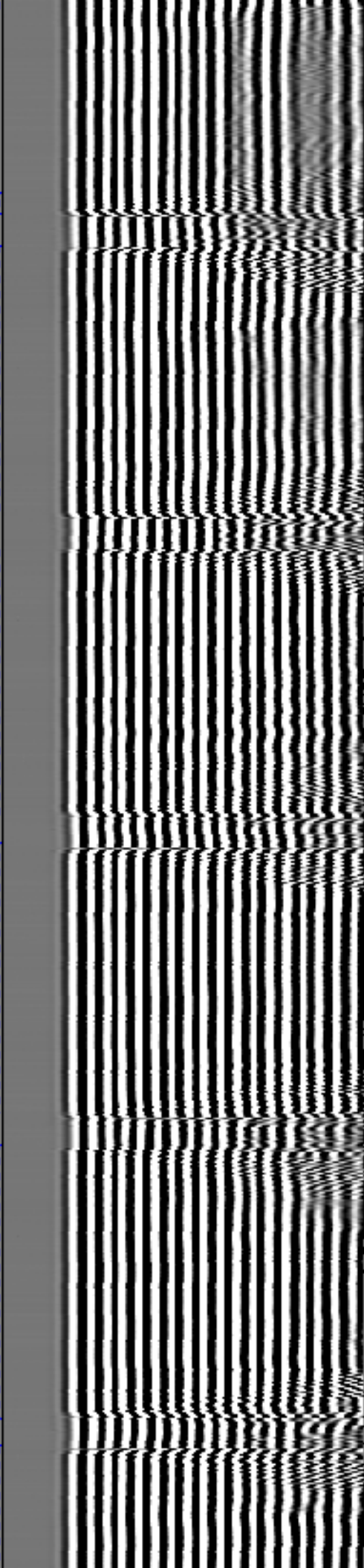
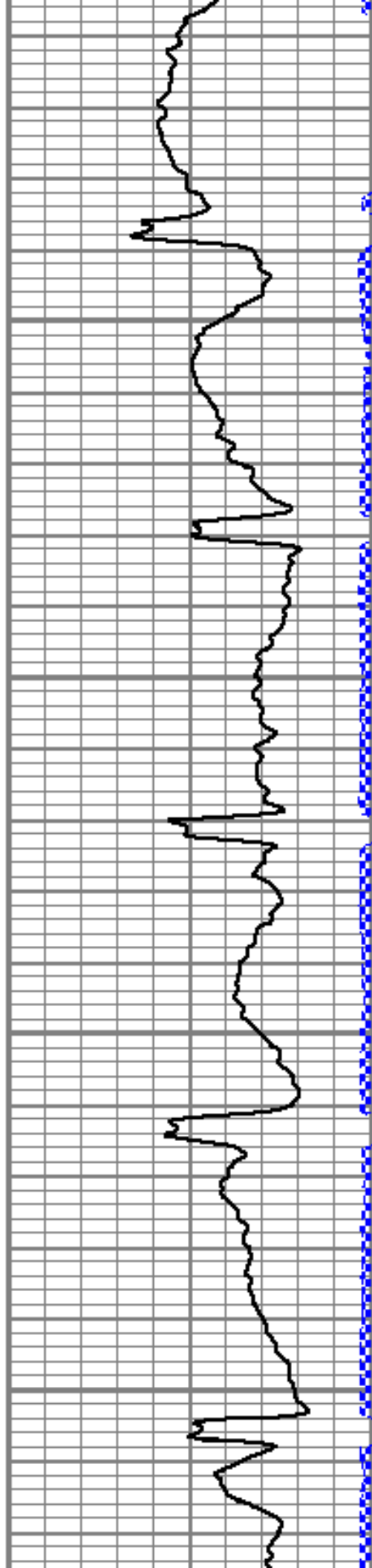


2450

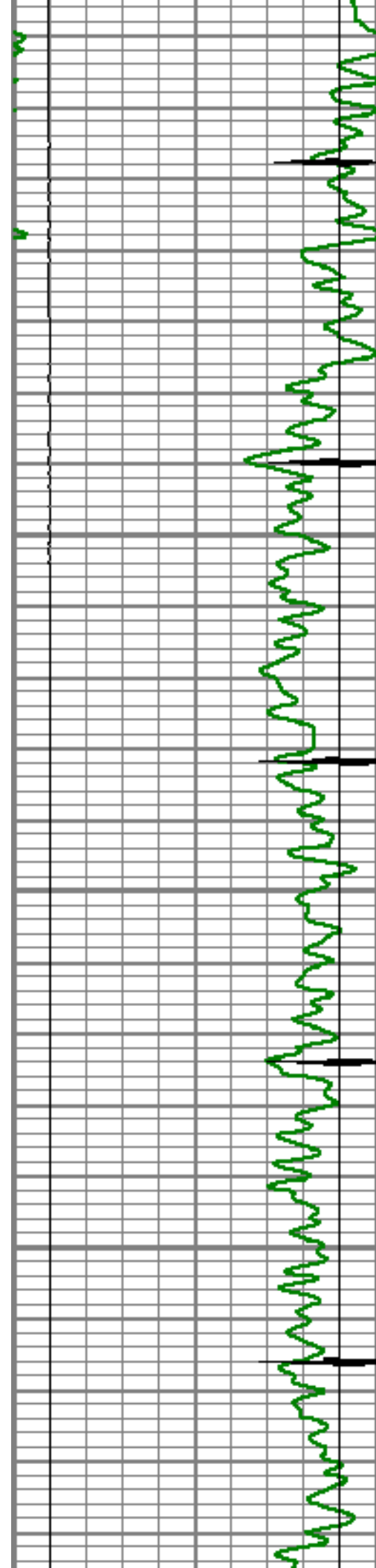
2500

2550

2600





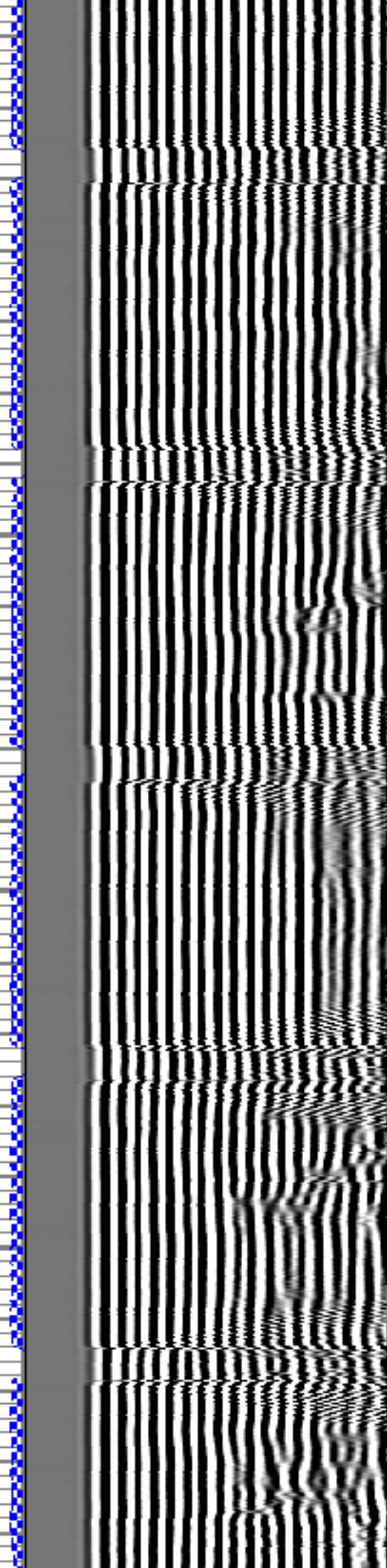
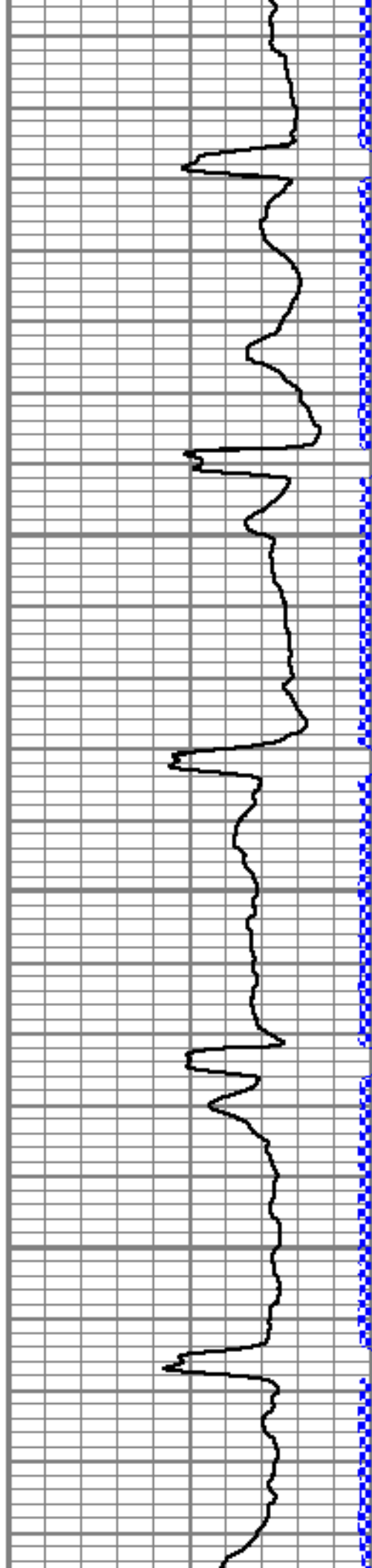


2650

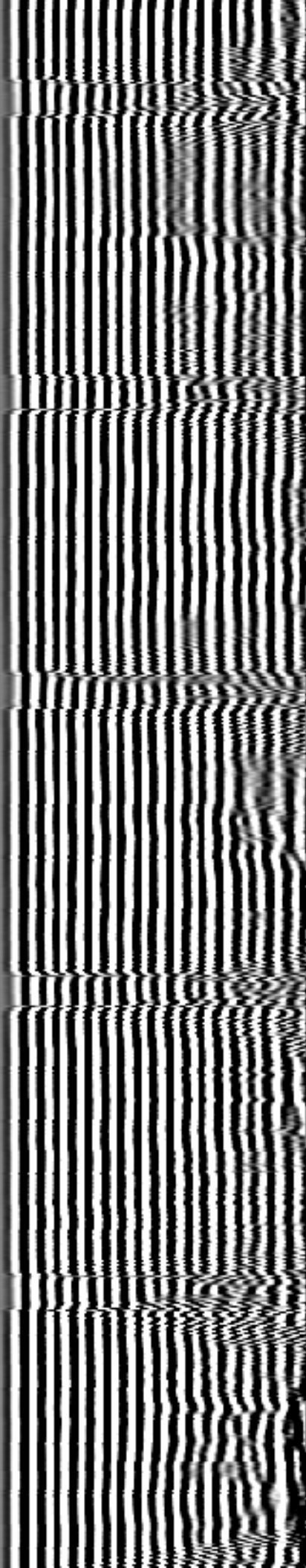
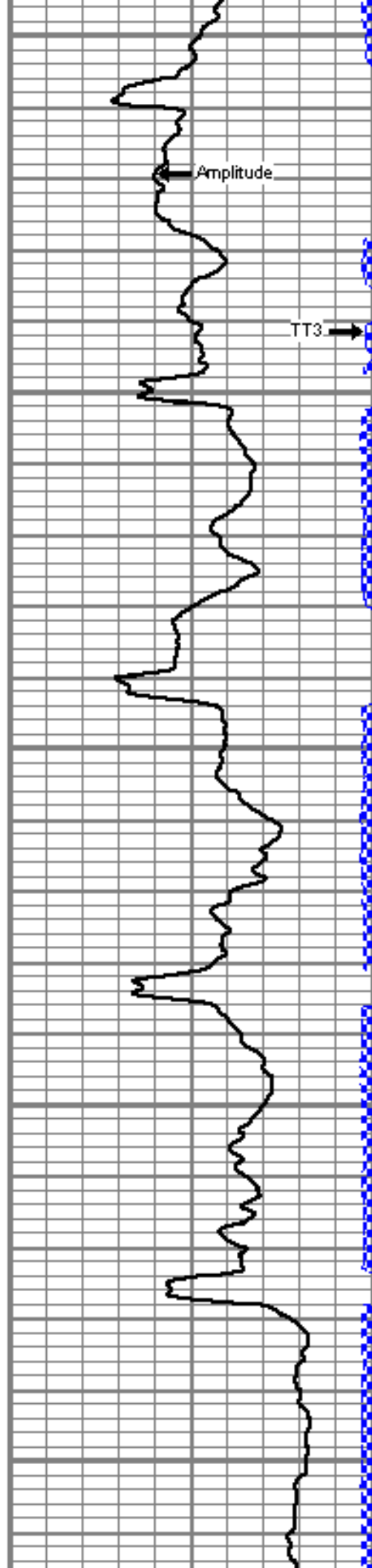
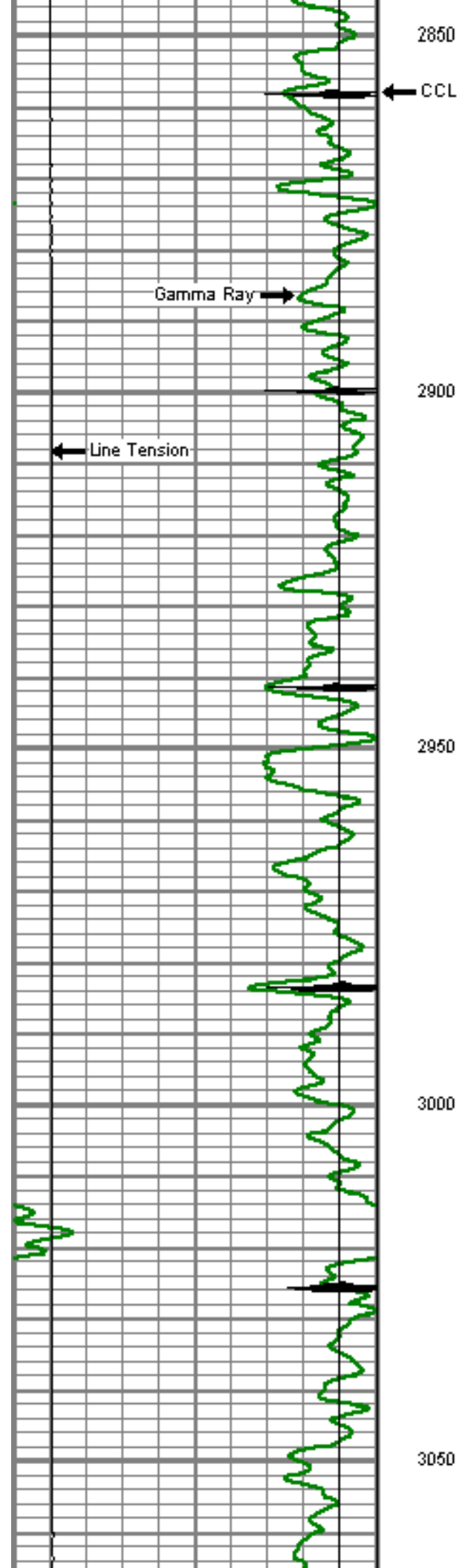
2700

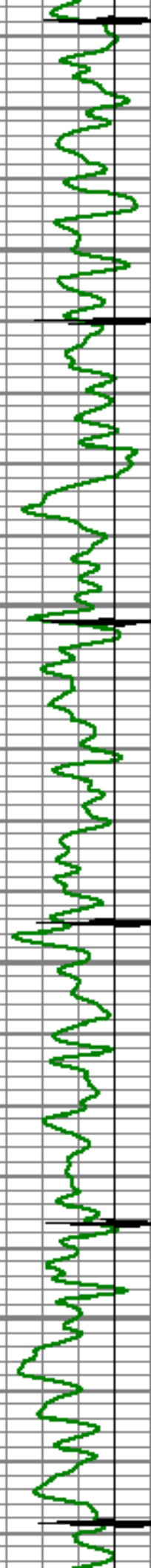
2750

2800







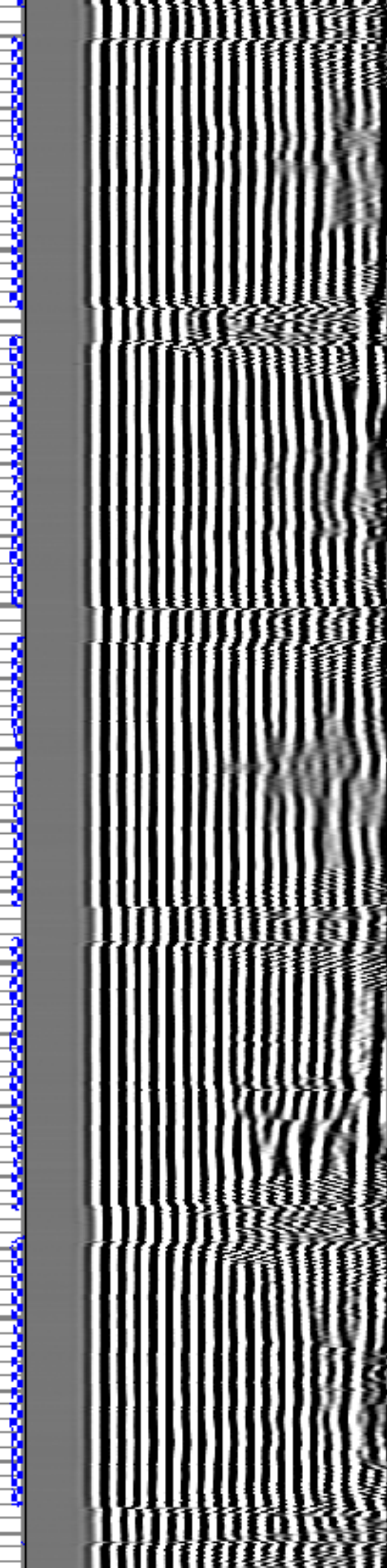
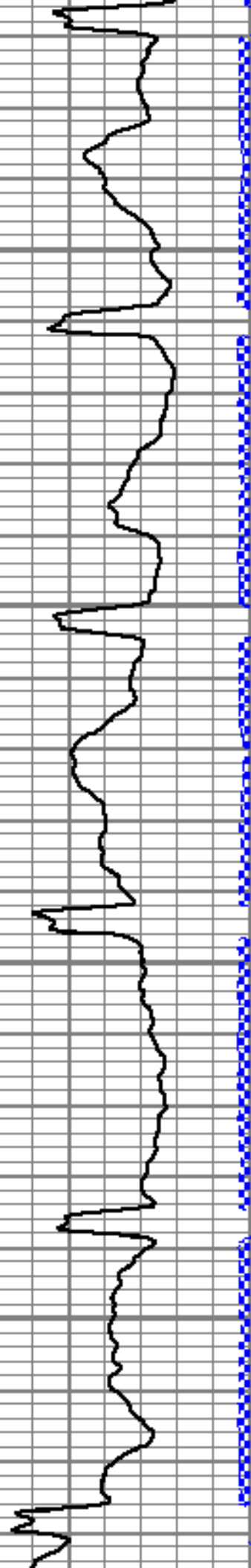


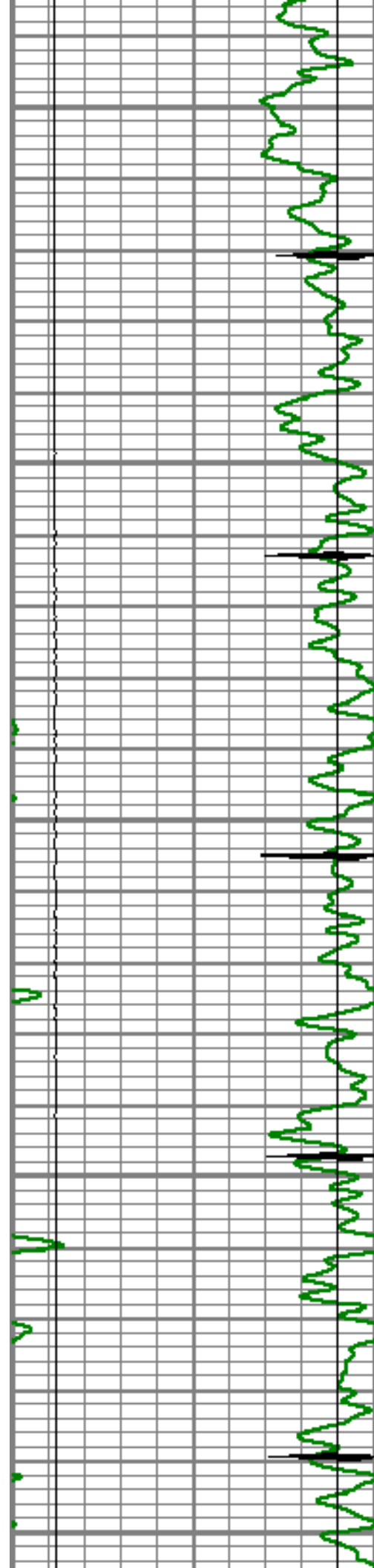
3100

3150

3200

3250





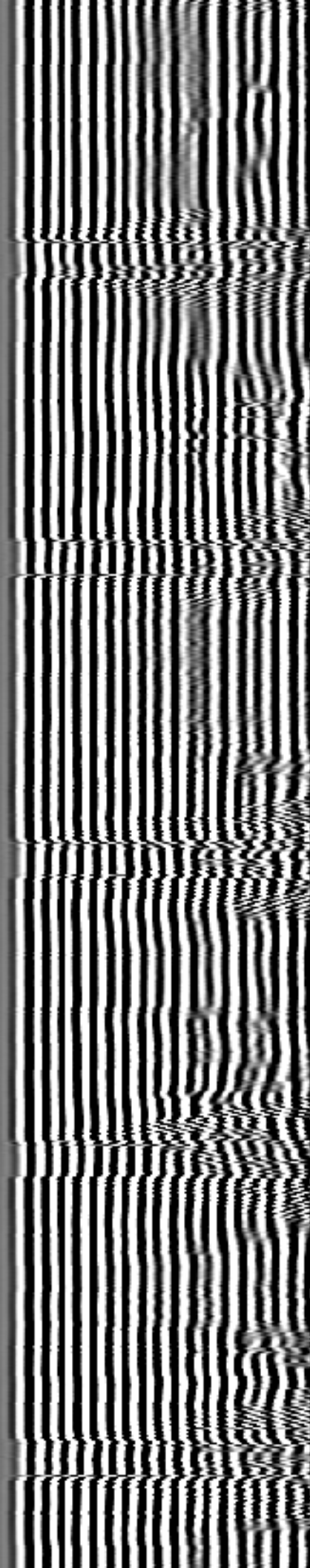
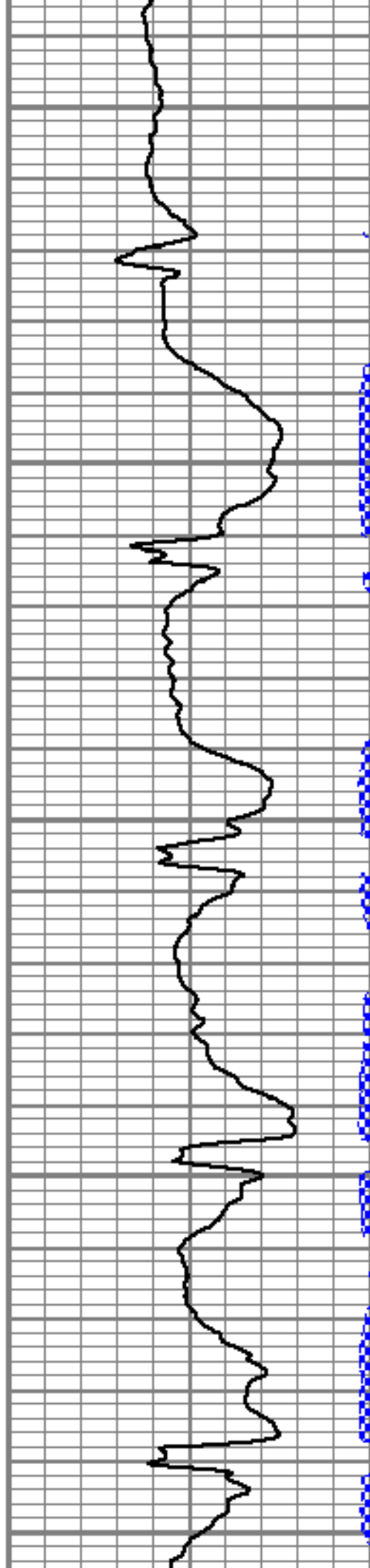
3300

3350

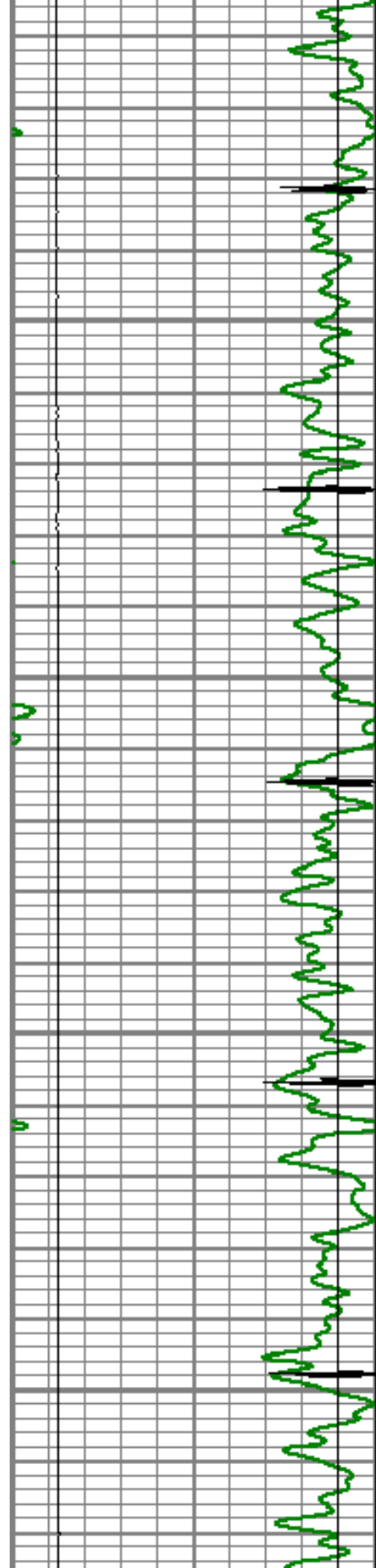
3400

3450

3500





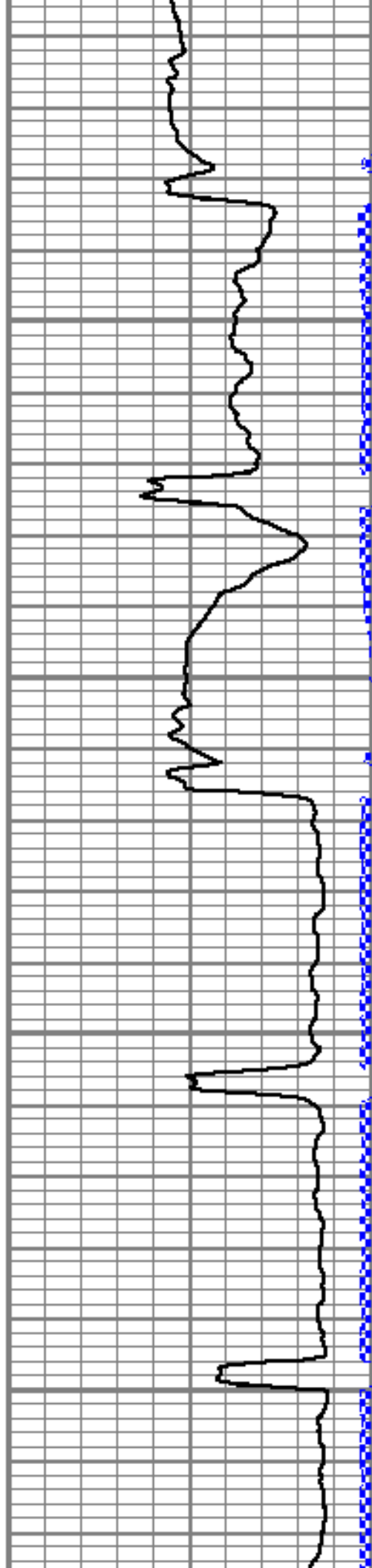


3550

3600

3650

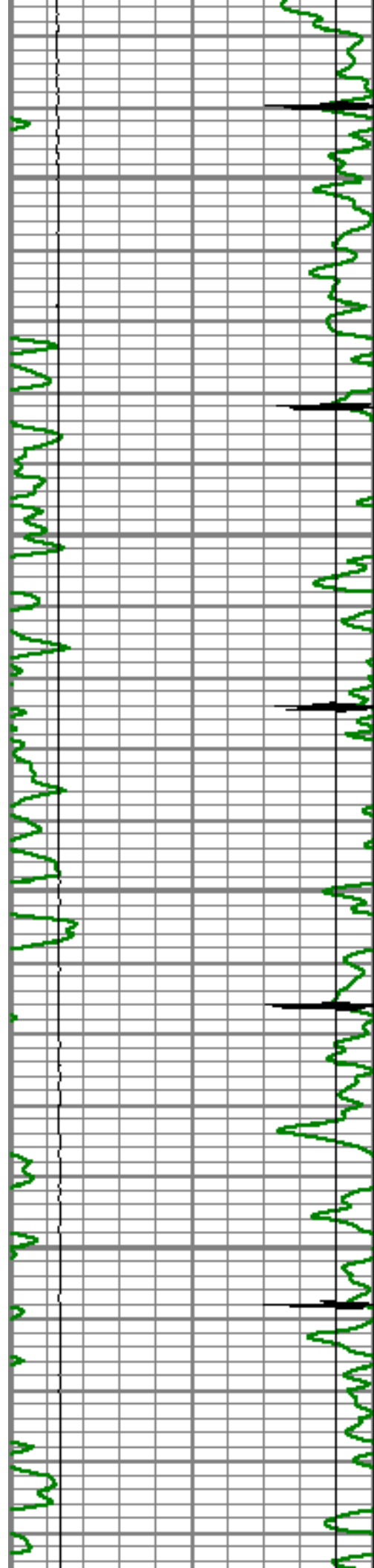
3700



2





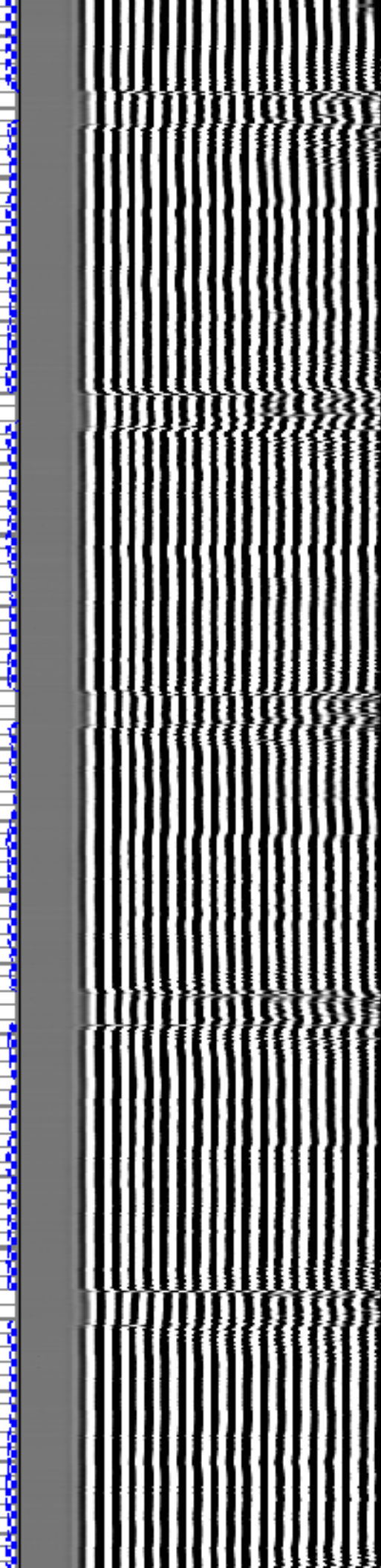
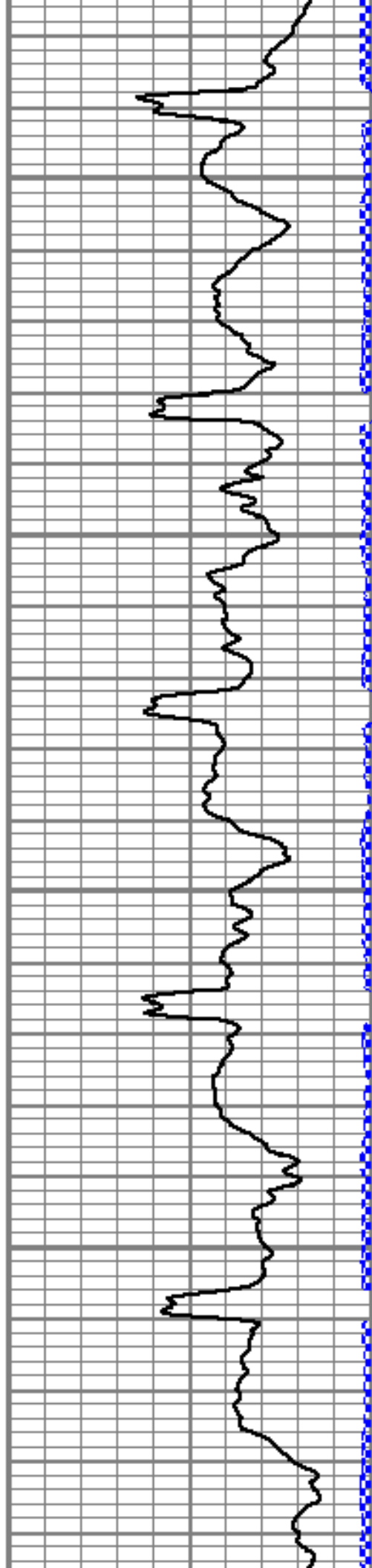


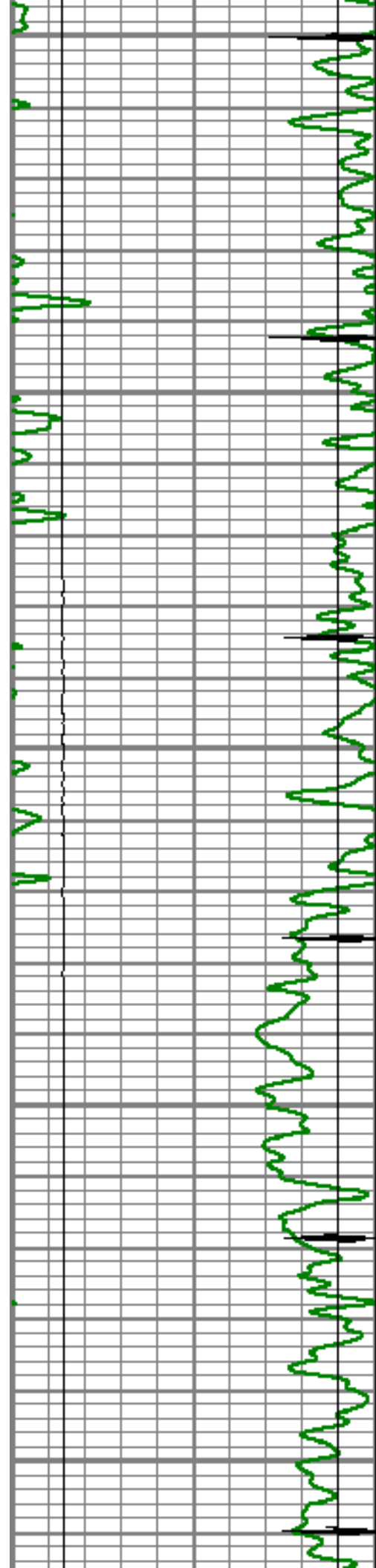
3750

3800

3850

3900





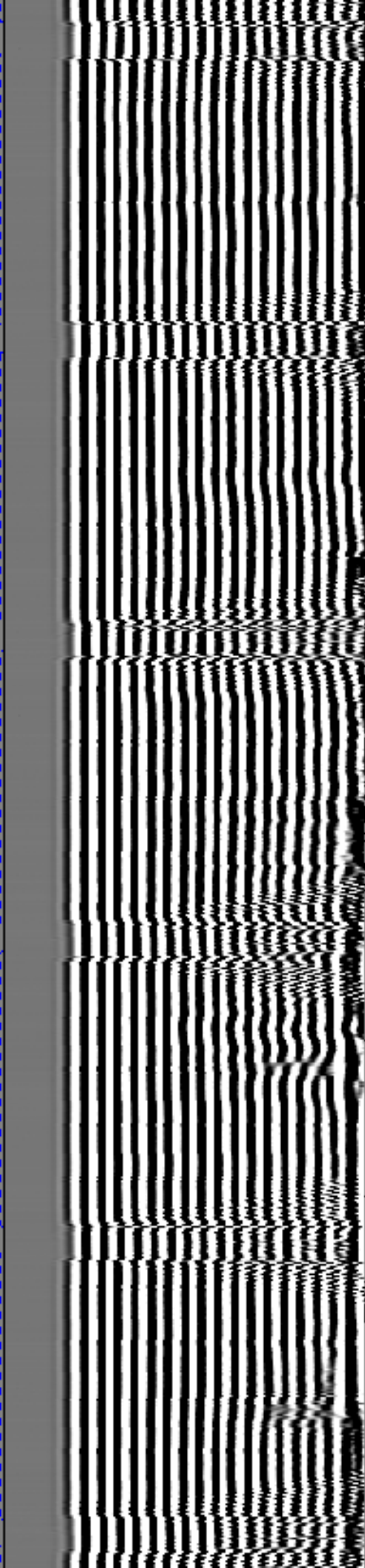
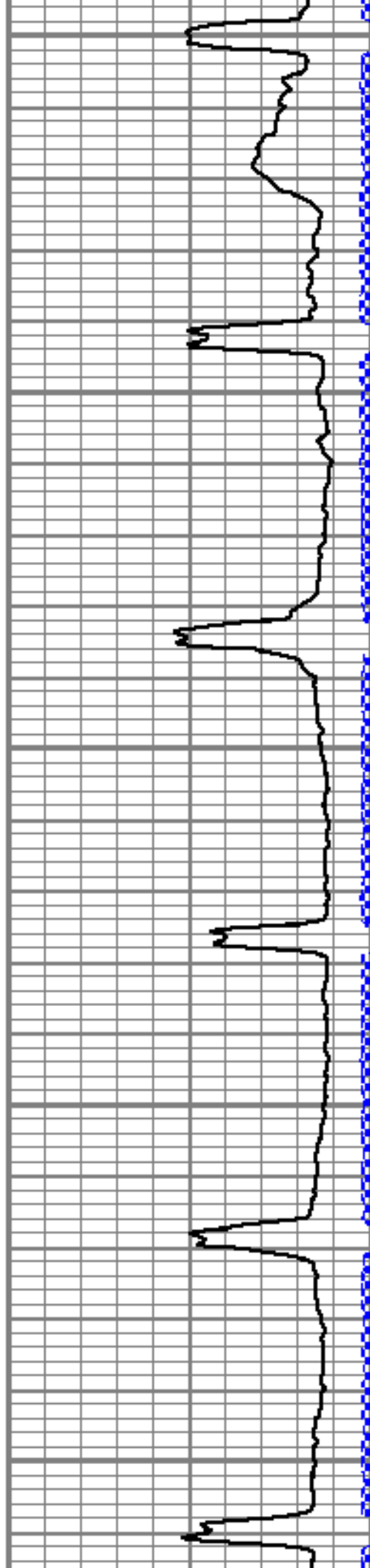
3950

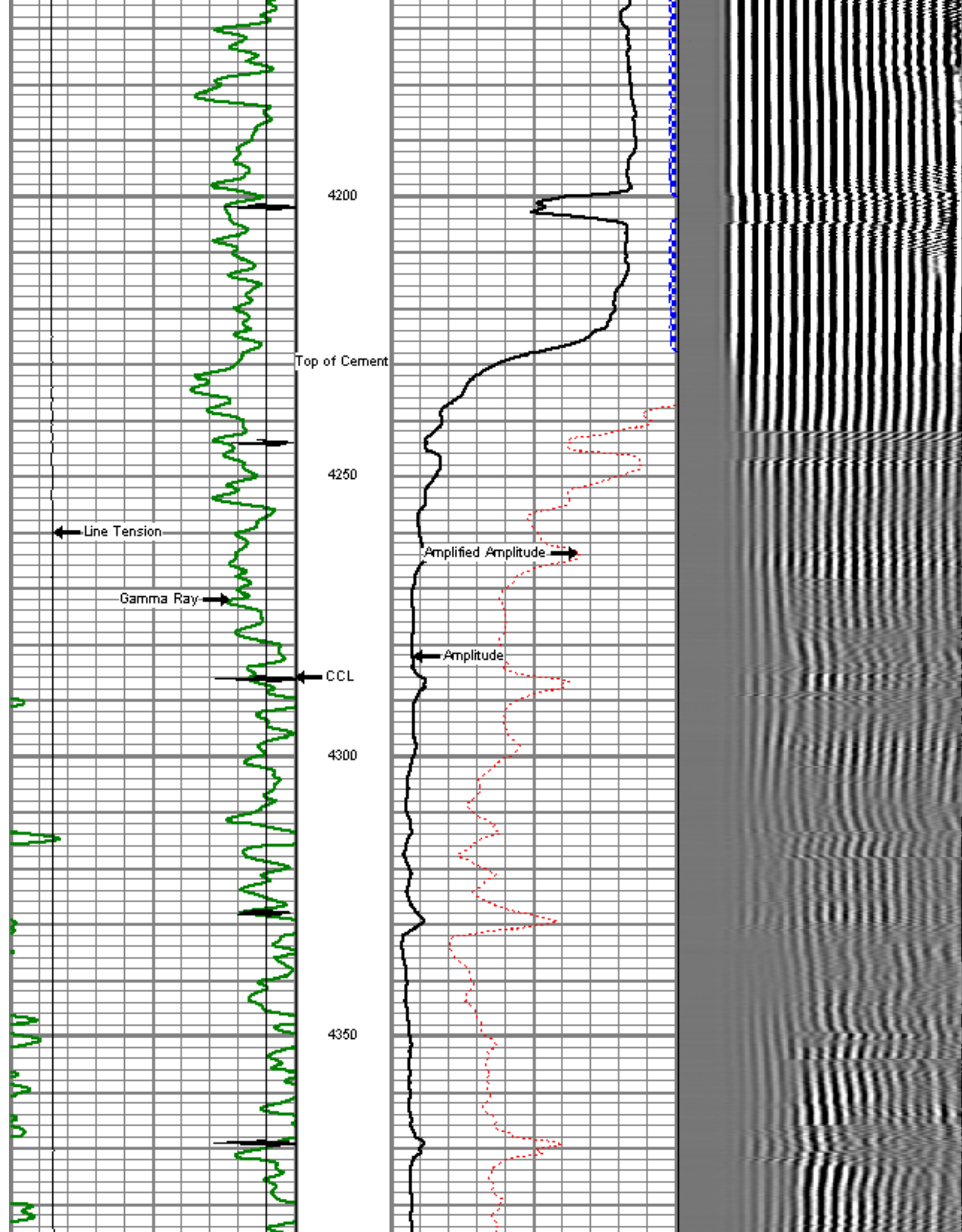
4000

4050

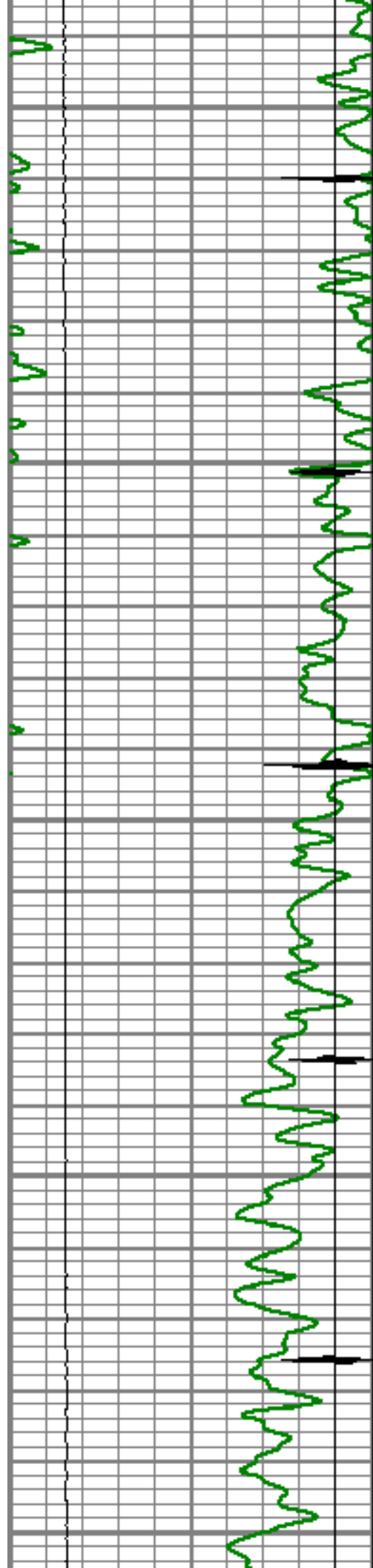
4100

4150









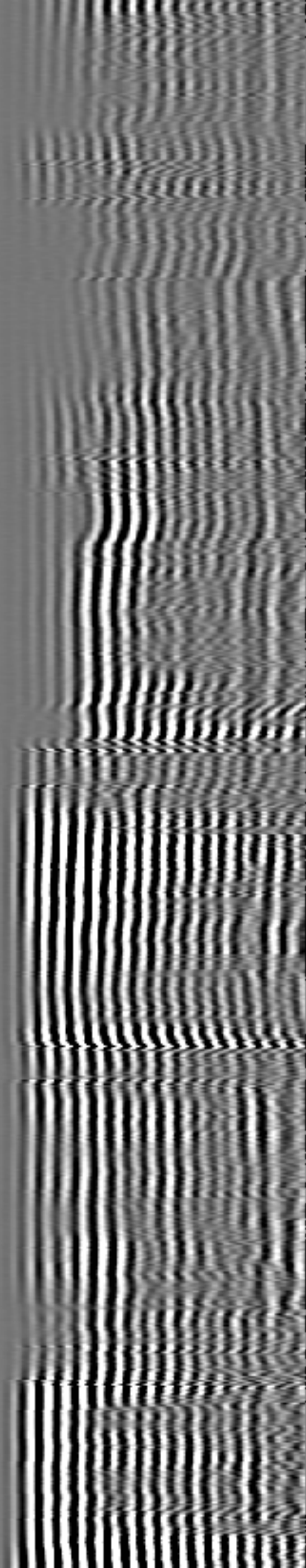
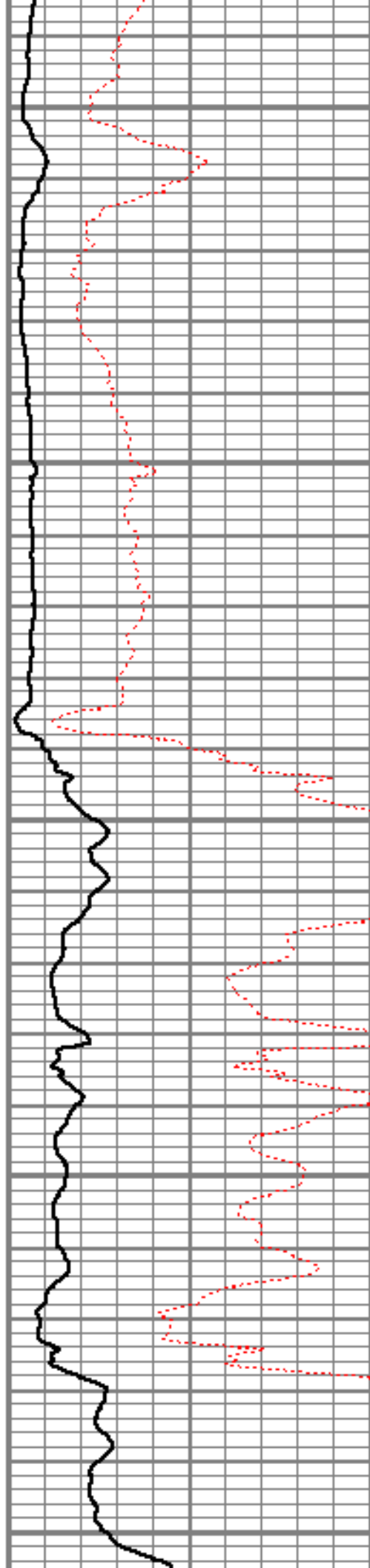
4400

4450

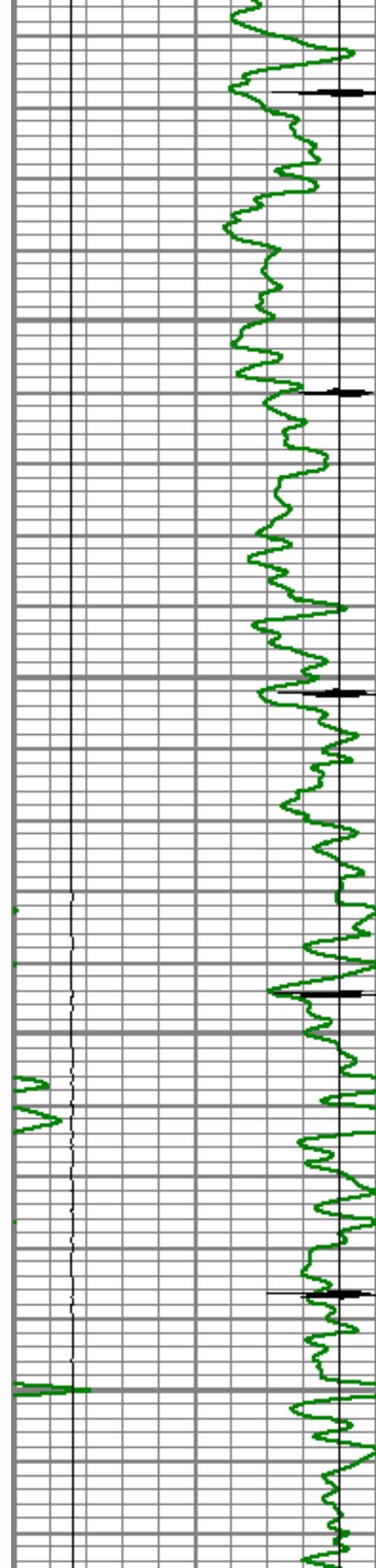
4500

4550

4600





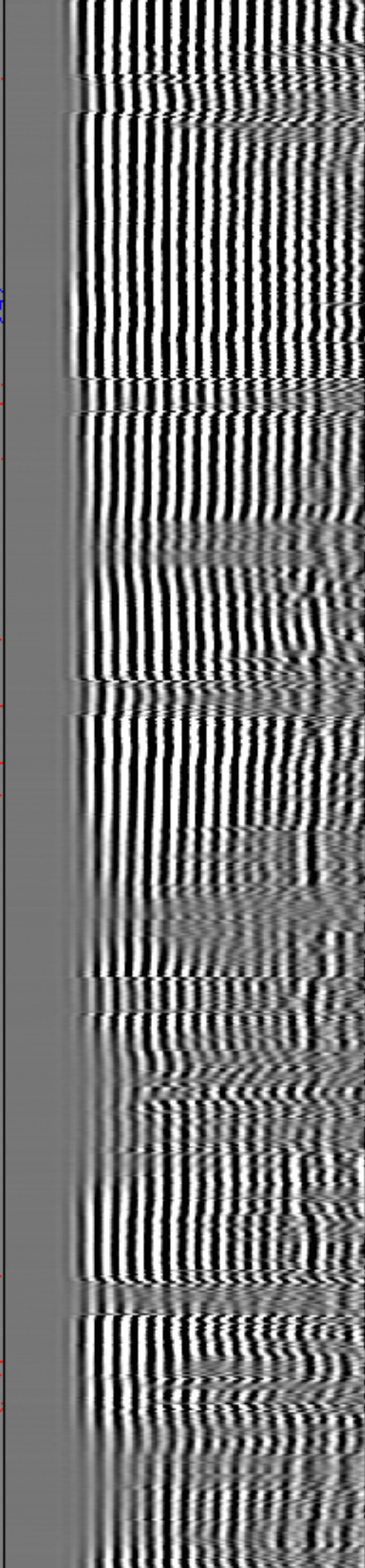
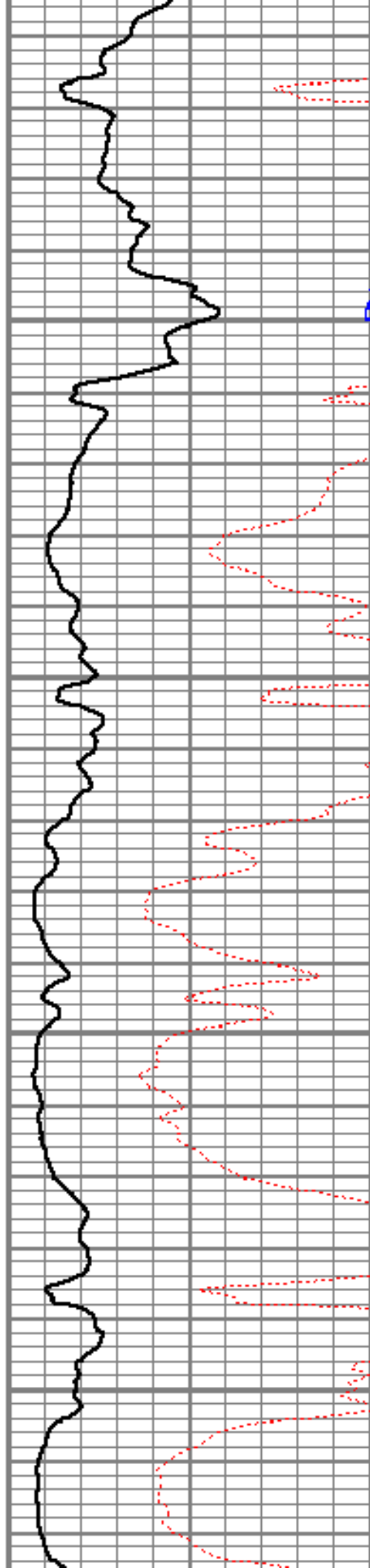


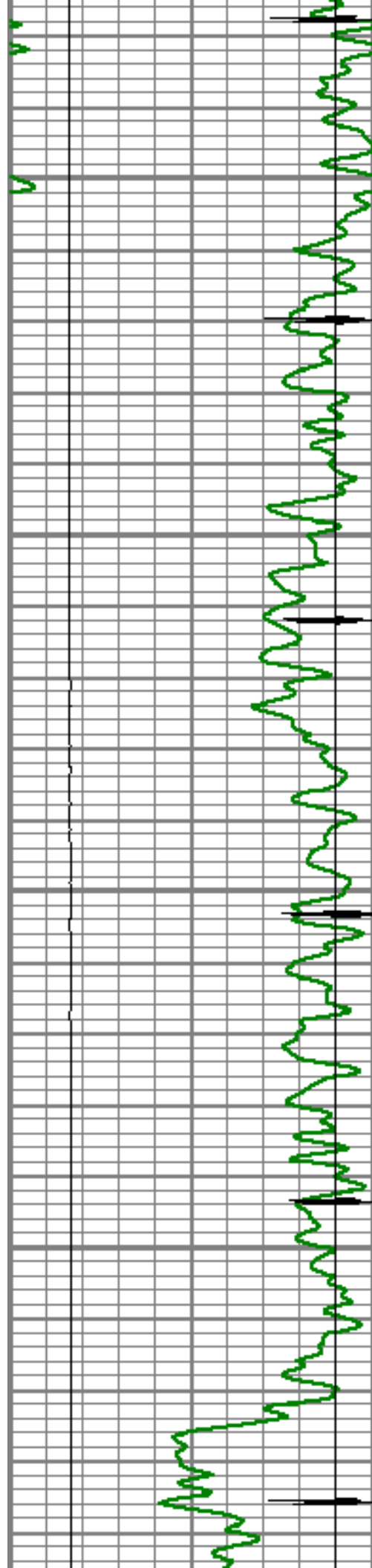
4650

4700

4750

4800



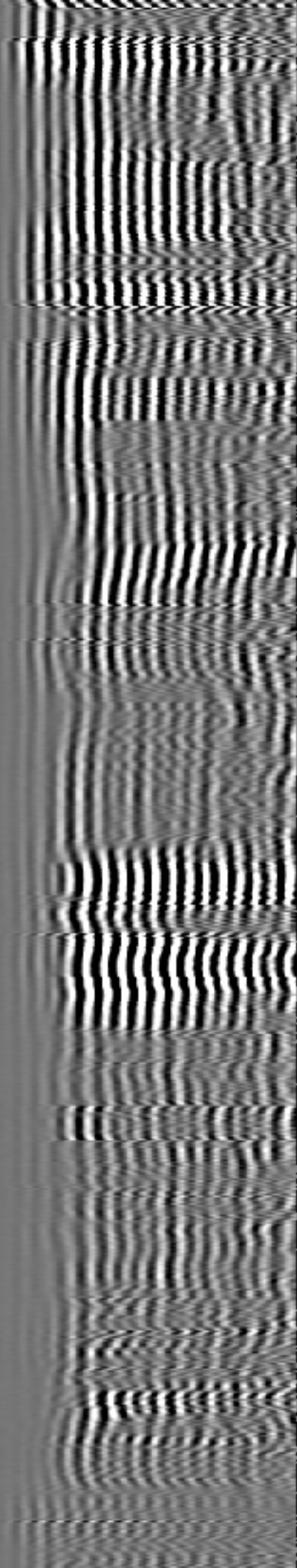
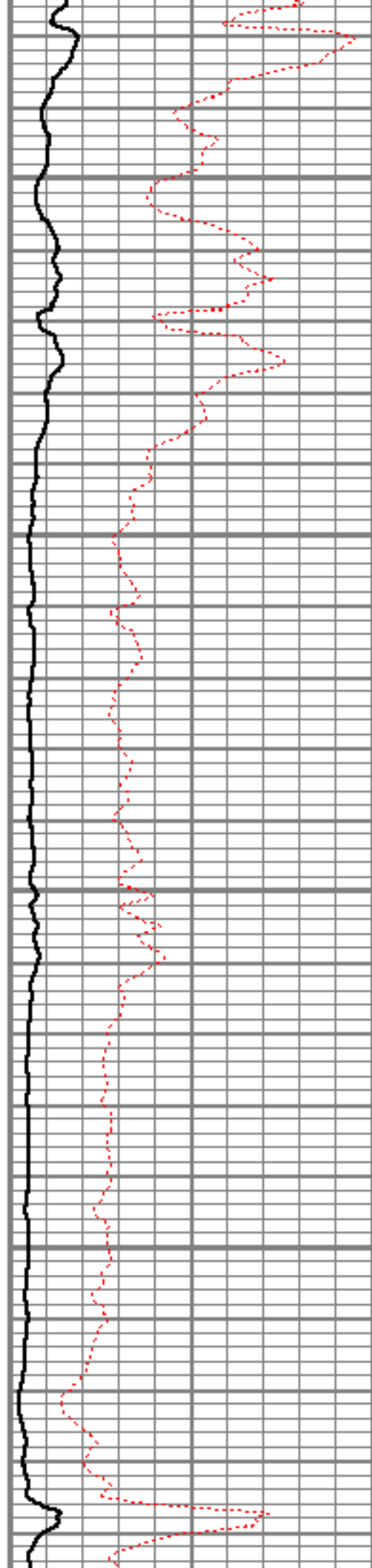


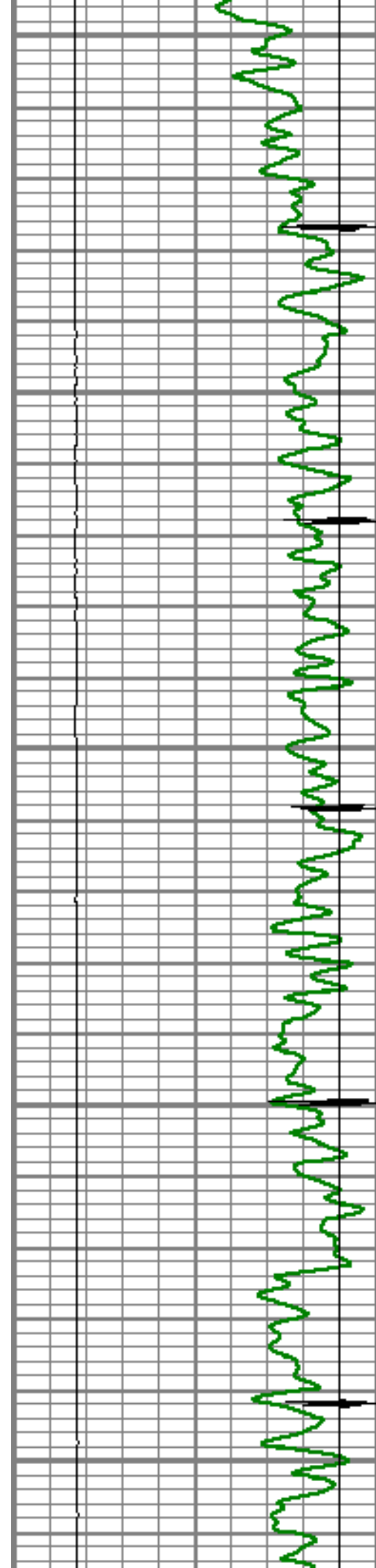
4850

4900

4950

5000





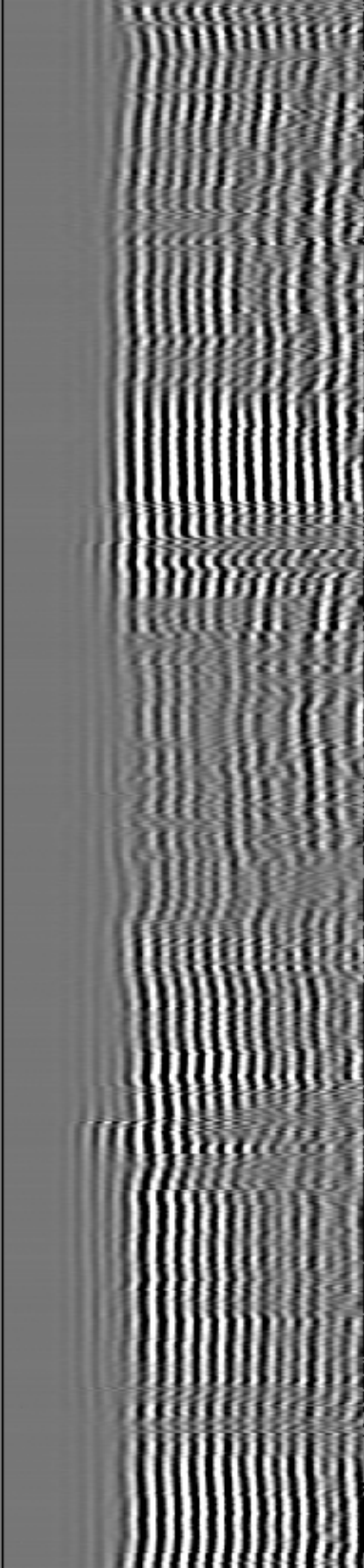
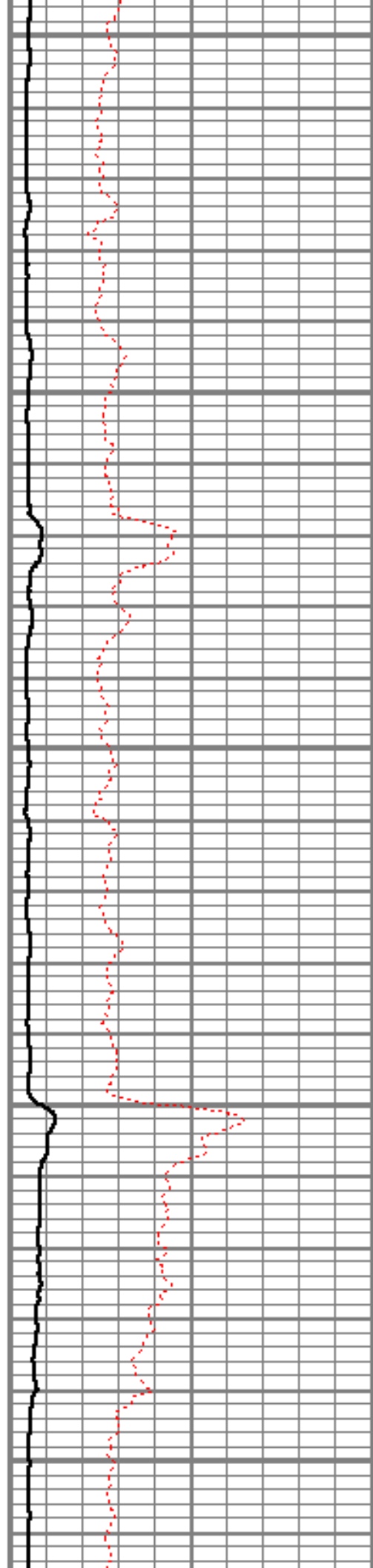
5050

5100

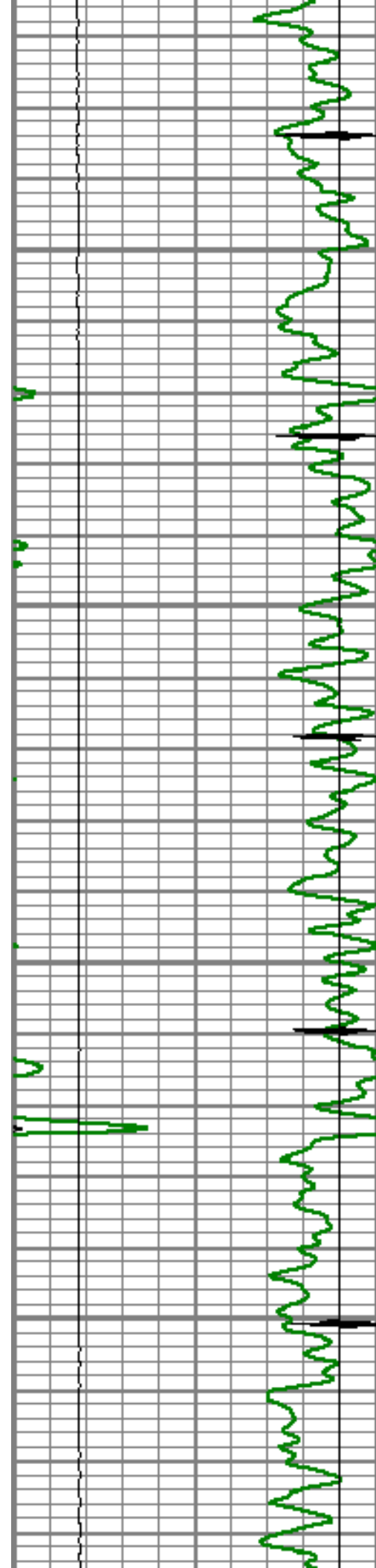
5150

5200

5250





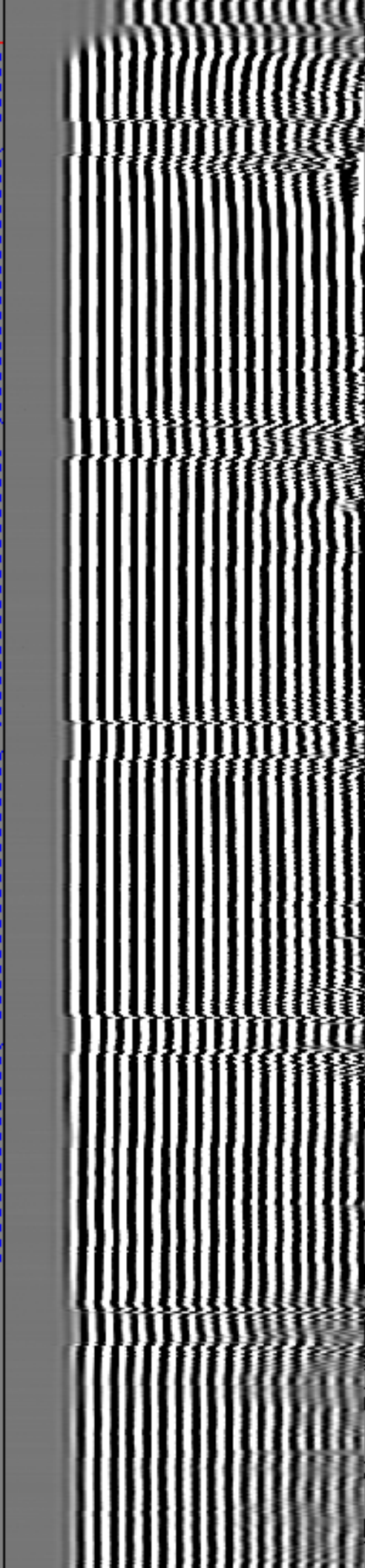
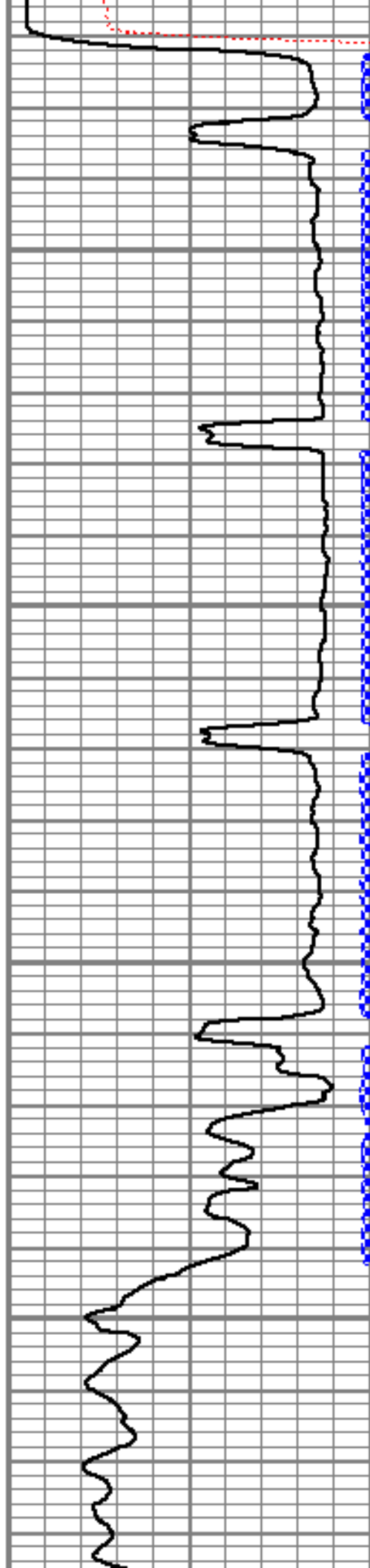


5300

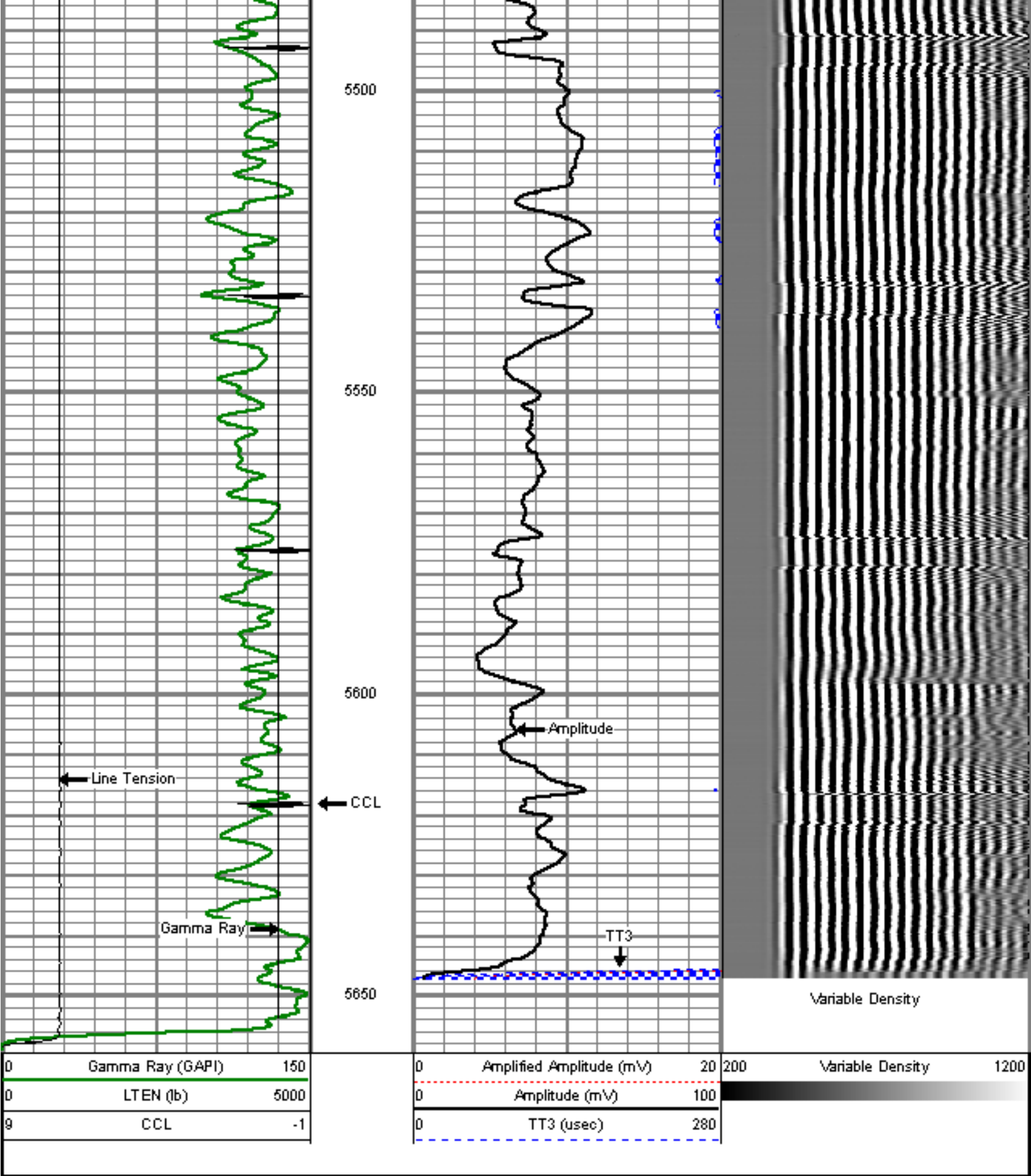
5350

5400

5450







Sensor	Offset (ft)	Schematic	Description	Len (ft)	OD (in)	Wt (lb)
			titan	1.02	1.44	1.50

			Centralizer-Probe (CENT-PROBE-1) Probe Bowspring Centralizer	2.88	2.75	10.00
WVF3	11.67					
WVF5	10.67		CBL-Probe (DCBL_PRB_275_01) Probe 275" Dual Receiver Bond	8.77	2.75	60.00
			Centralizer-Probe (CENT-PROBE-2) Probe Bowspring Centralizer	2.88	2.75	10.00
CCL	3.63					
			GR-Probe (GRCCL_PRB_275_01) Probe 275" 4 Channel Probe	4.54	2.75	30.00
GR	0.90					
Dataset: sullivan4-6squeeze.db: field/well/run1/pass6 Total Length: 20.08 ft Total Weight: 111.50 lb O.D. 2.75 in						



Company

ENCANA OIL & GAS (USA)

Well

SULLIVAN 4-6-26

File

WVF5-275-2008-01



Field	WATTENBERG
County	WELD
State	COLORADO