



CEMENT BOND LOG

Mesa Wireline

Company	ENCANA OIL & GAS (USA) INC		
Well	KUNER 6-4-25		
Field	WATTENBERG		
County	WELD		
State	COLORADO		
Company ENCANA OIL & GAS (USA) INC		Location: API #: 05-123-30809-0000	
Well KUNER 6-4-25		SHL: 1258' FNL & 258' FEL	
Field WATTENBERG		BHL: 2560' FNL & 1300' FEL	
County WELD		SEC. 25 TWP. 5N RGE. 64W	
State COLORADO		Permanent Datum GROUND LEVEL Elevation 4586'	
		Log Measured From KELLY BUSHING = 12'	
		Drilling Measured From KELLY BUSHING	
		Other Services	
		NONE	
		Elevation	
		K.B. 4598'	
		D.F. 4697'	
		G.L. 4586'	

Date	30 JULY 2011				
Run Number	ONE				
Depth Driller	7536'				
Depth Logger	7522'				
Bottom Logged Interval	7522'				
Top Log Interval	4850'				
Open Hole Size	4.5"				
Type Fluid	WATER				
Density / Viscosity	~8.3#				
Max. Recorded Temp.	250 DEG F				
Estimated Cement Top	4960'				
Time Well Ready	N/A				
Time Logger on Bottom	N/A				
Equipment Number	10901 PRA10				
Location	AULT.CO				
Recorded By	Z.EMICK				
Witnessed By	T.MAJORS				
Borehole Record					
Run Number	Bit	From	To	Size	Tubing Record
ONE	12.25"	0'	820'		Weight
TWO	7.875"	0'	7550'		From
					To
Casing Record					
Surface String	Size	Wt/Lb	Top	Bottom	
	9.625"	24#	0'	800'	
Prot. String					
Production String	4.5"	11.6#	0'	7536'	
Liner					

<<< Fold Here >>>

All interpretations are opinions based on inferences from electrical or other measurements and we cannot and do not guarantee the accuracy or correctness of any interpretation, and we shall not, except in the case of gross or willful negligence on our part, be liable or responsible for any loss, costs, damages, or expenses incurred or sustained by anyone resulting from any interpretation made by any of our officers, agents or employees. These interpretations are also subject to our general terms and conditions set out in our current Price Schedule.

Comments

LOG CORRELATED TO PSI HIGH RESOLUTION INDUCTION LOG DATED 27 JUNE 2011
SHORT JOINT 6556'-6578'

WE APPRECIATE YOUR BUSINESS, MESA WIRELINE LLC, GRAND JUNCTION CO. (970) 257-0458

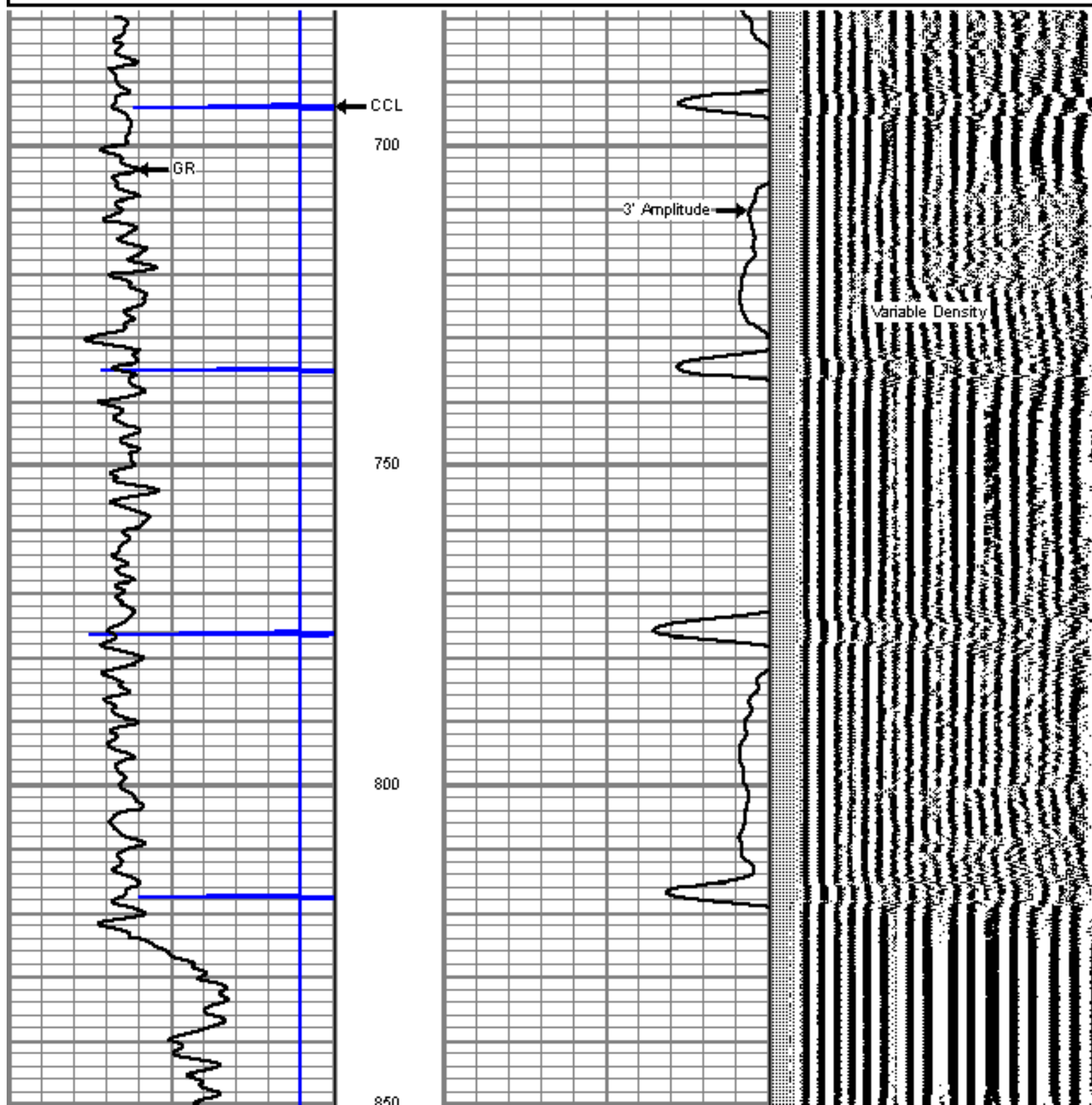


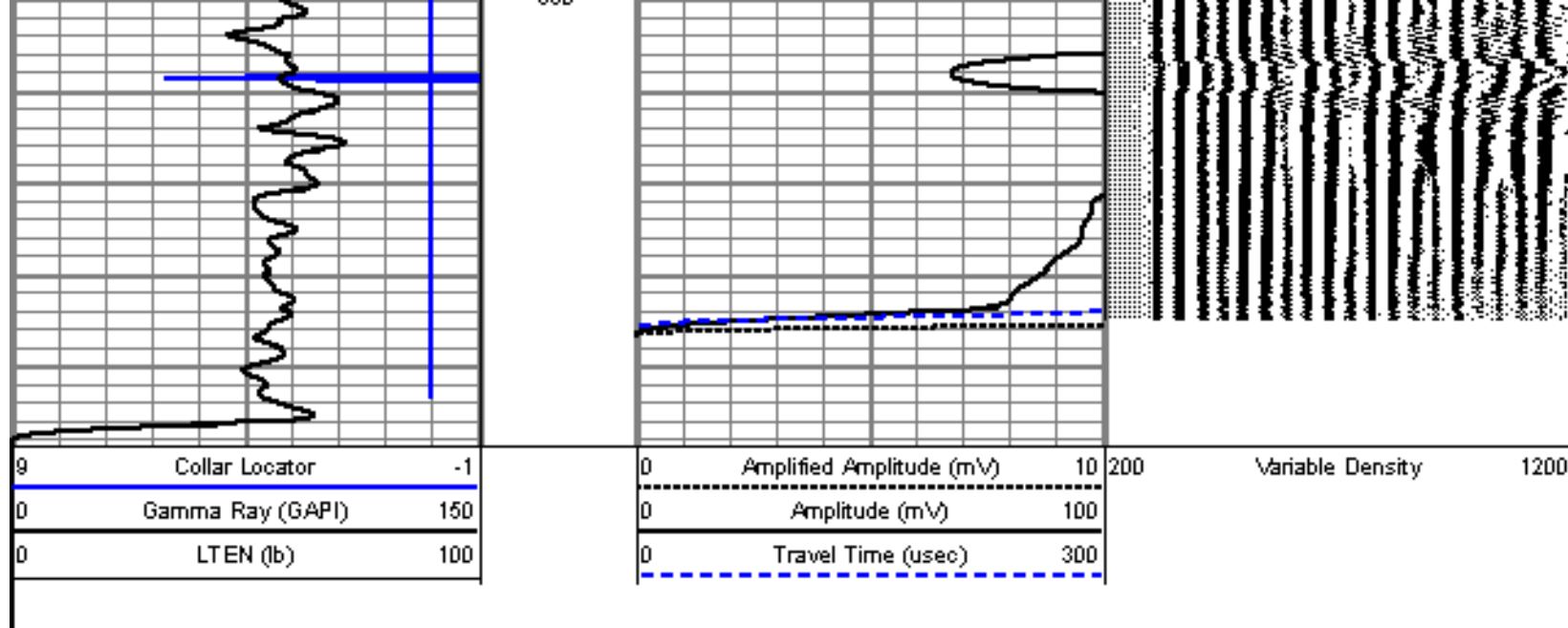
TOP REPEAT PASS

Database File: kuner 6-4-25.db
Dataset Pathname: pass15
Presentation Format: cbl01
Dataset Creation: Sat Jul 30 13:52:20 2011 by Log Std Casedhole 09061
Charted by: Depth in Feet scaled 1:240

9	Collar Locator	-1
0	Gamma Ray (GAPI)	150
0	LTEN (lb)	100

0	Amplified Amplitude (mV)	10	200	Variable Density	1200
0	Amplitude (mV)	100			
0	Travel Time (usec)	300			

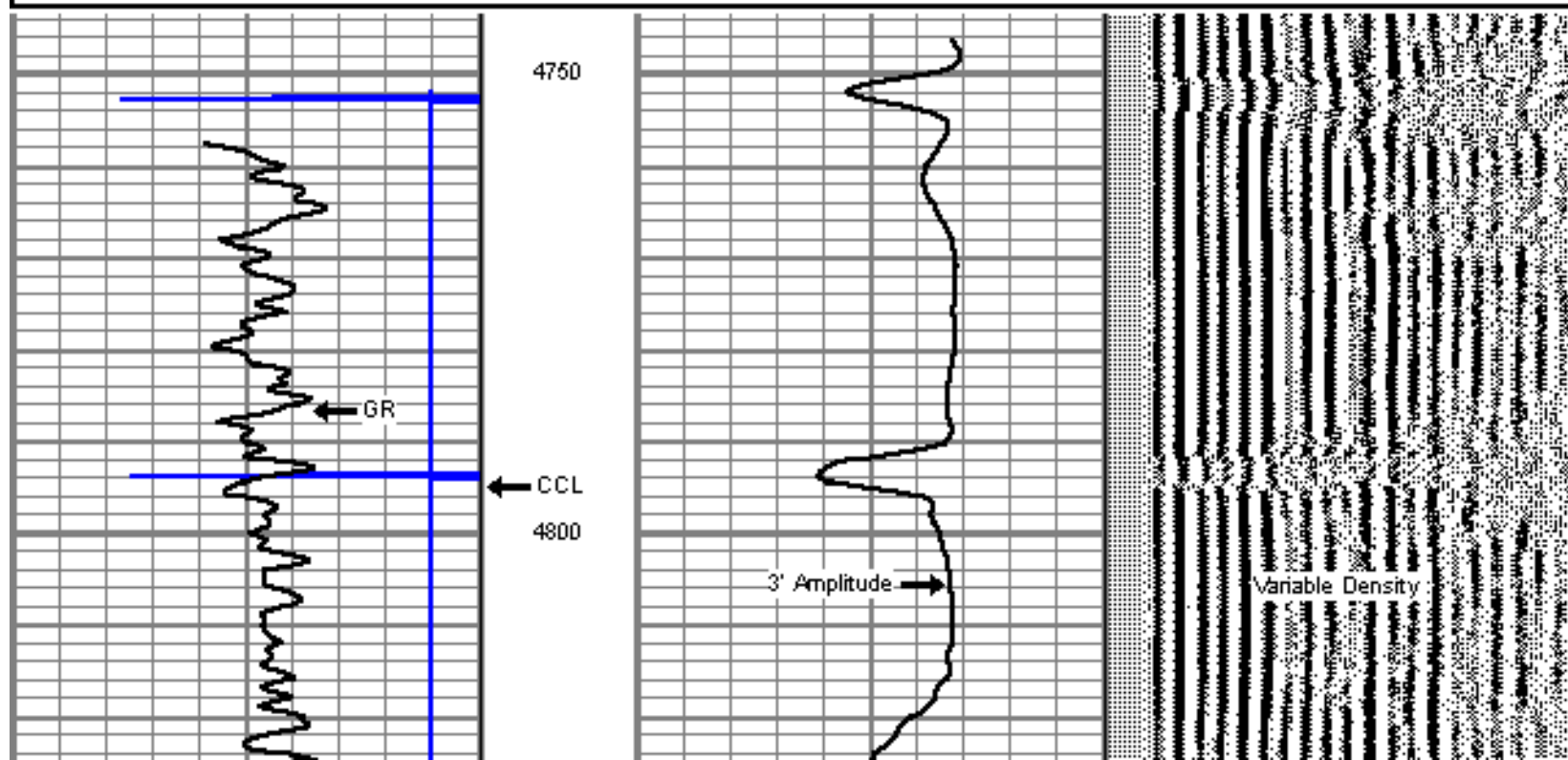
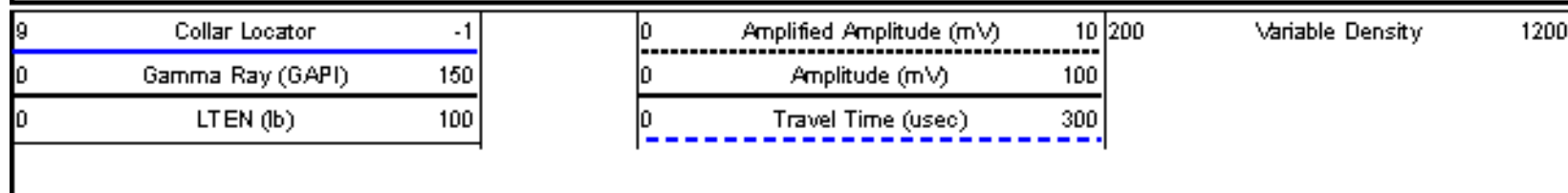


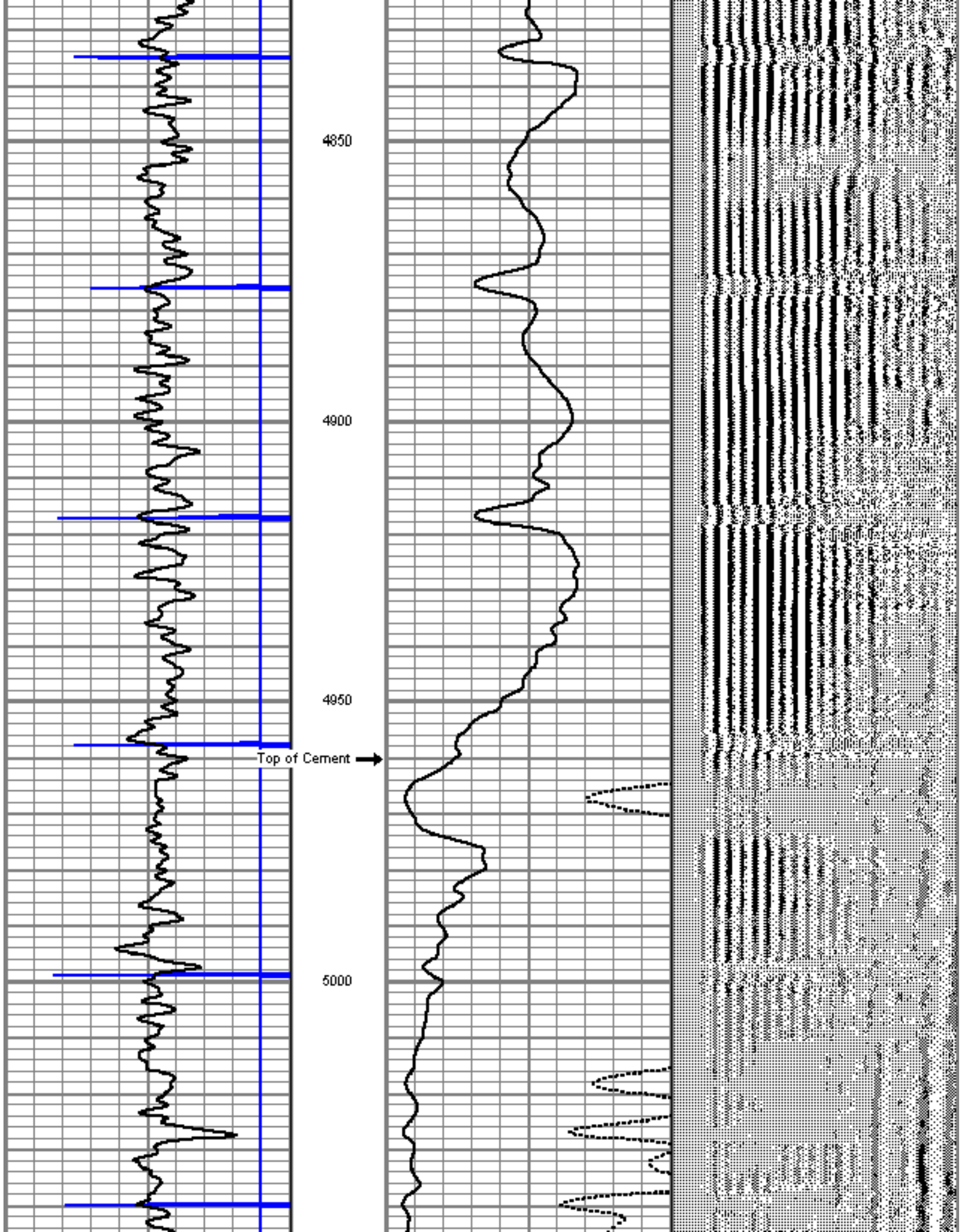


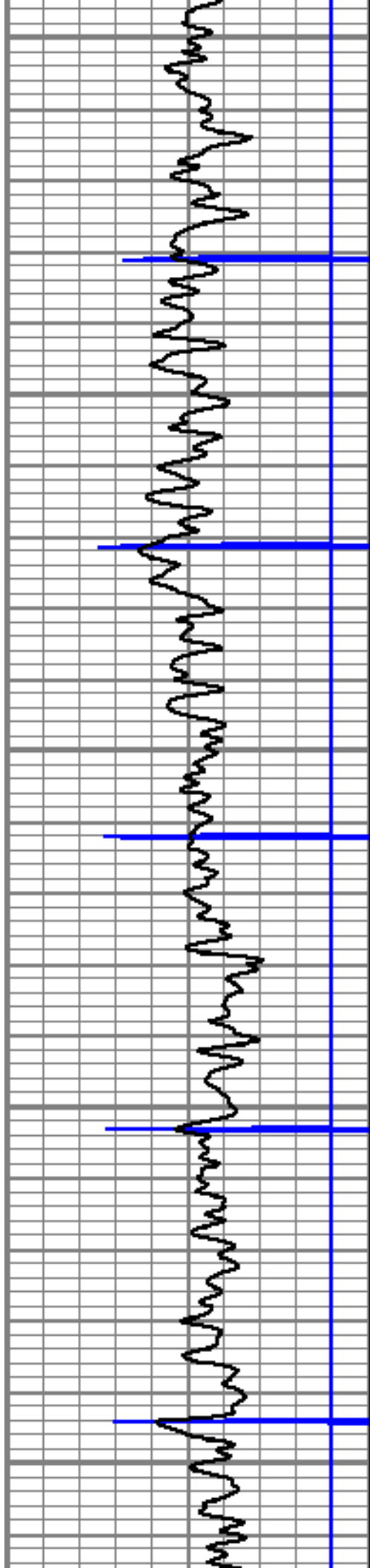
MAIN PASS

5" = 100'

Database File: kuner 6-4-25.db
 Dataset Pathname: pass140H
 Presentation Format: cbl01
 Dataset Creation: Sat Jul 30 17:23:48 2011
 Charted by: Depth in Feet scaled 1:240







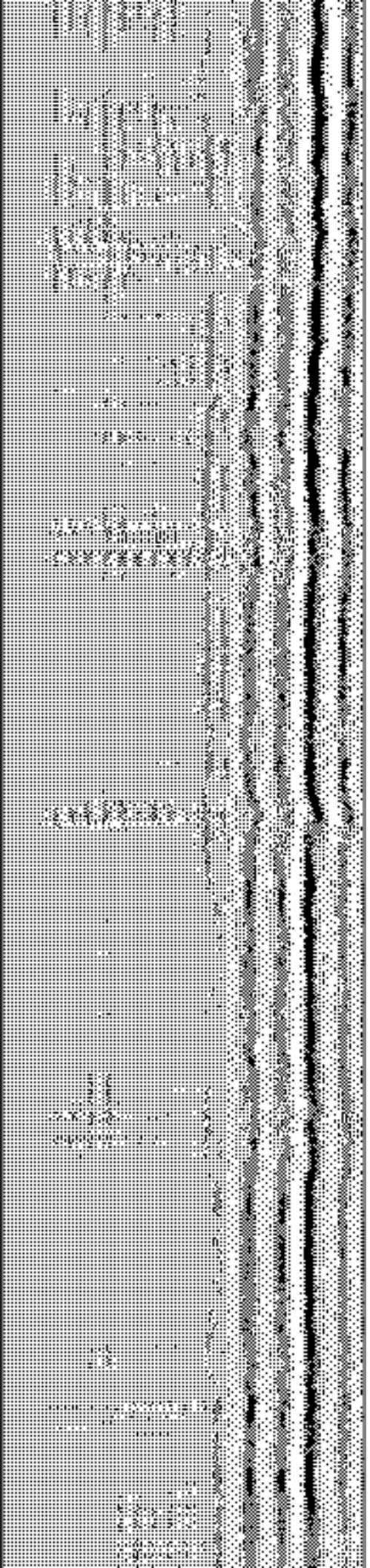
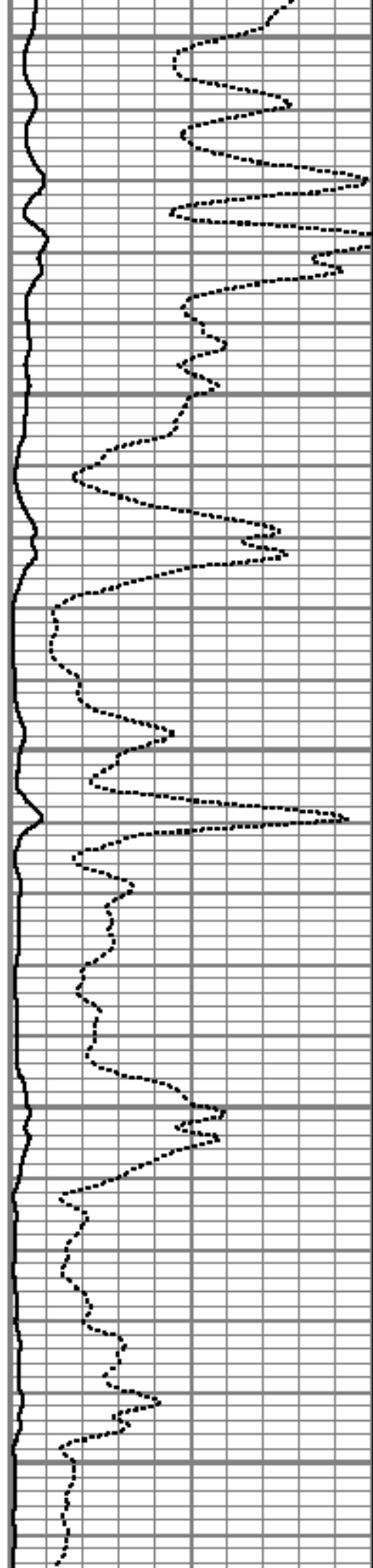
5050

5100

5150

5200

5250



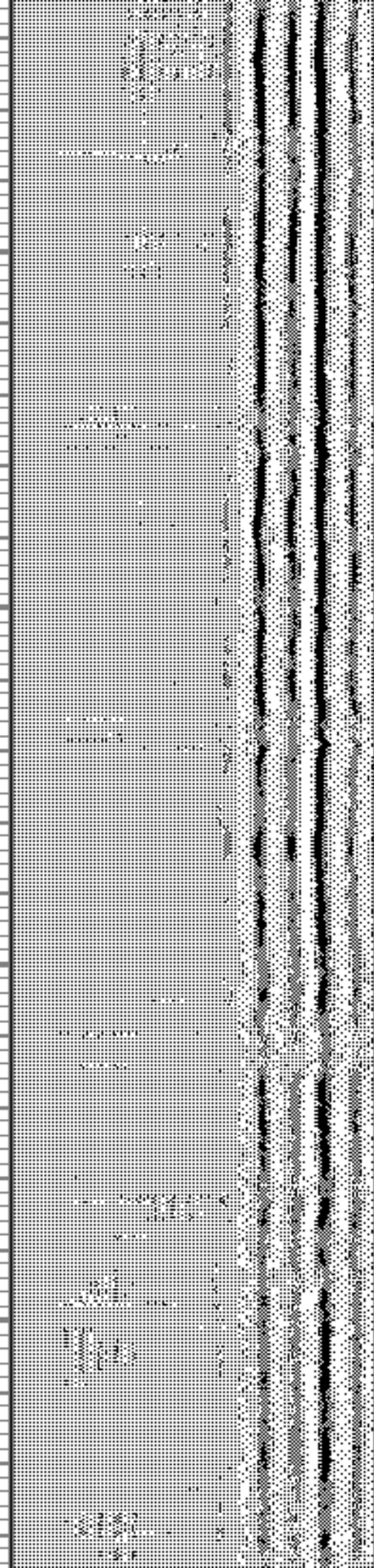
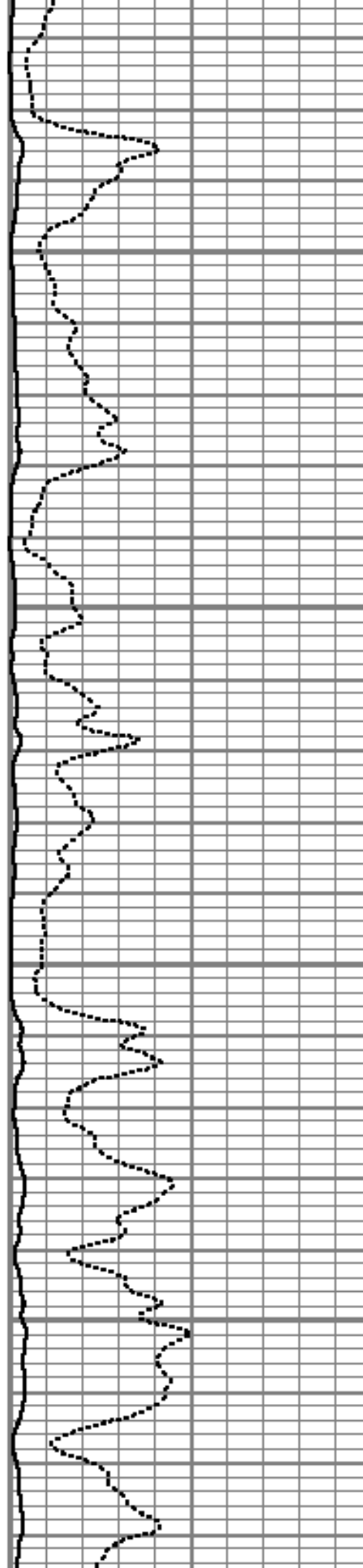


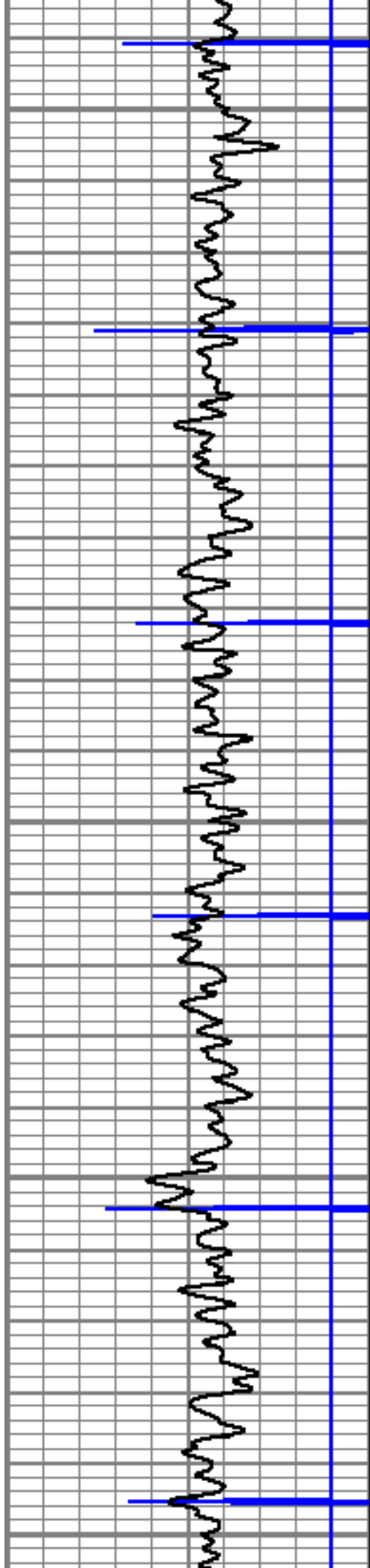
5300

5350

5400

5450





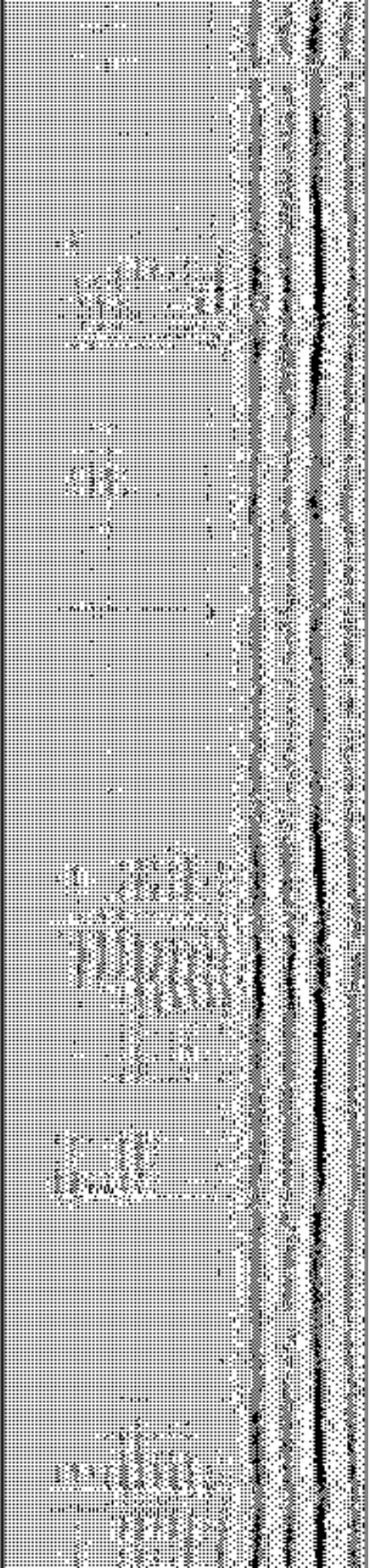
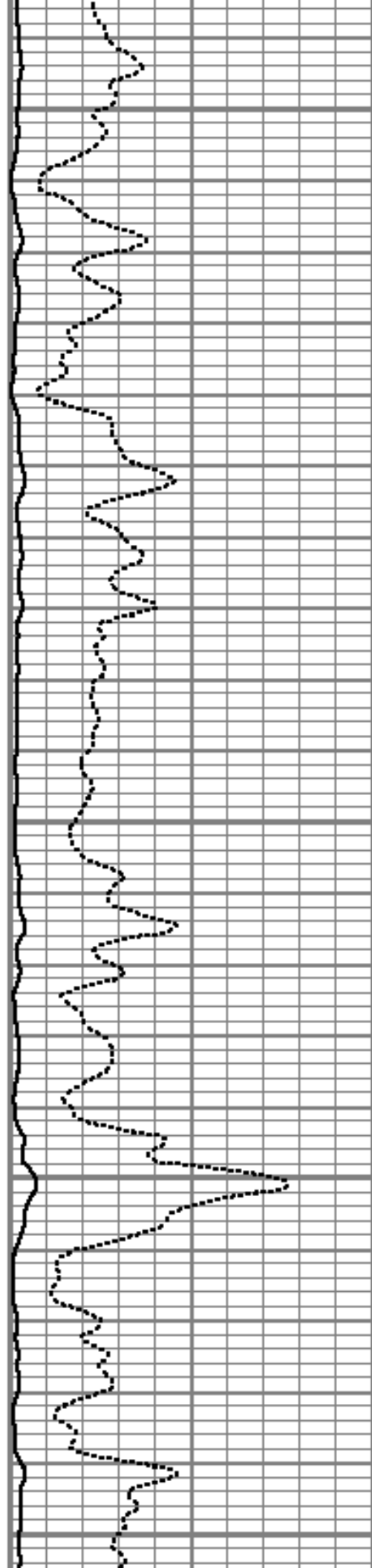
5500

5550

5600

5650

5700



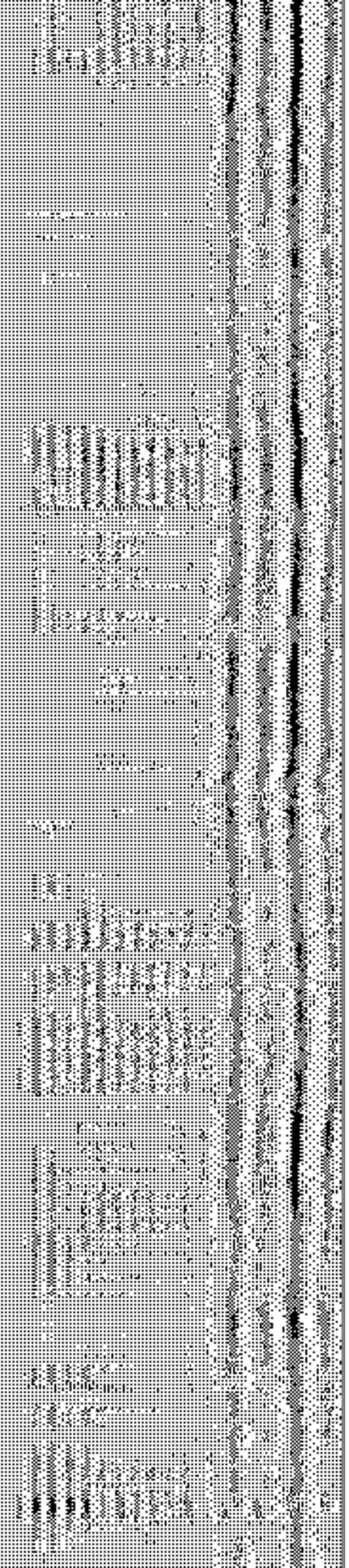
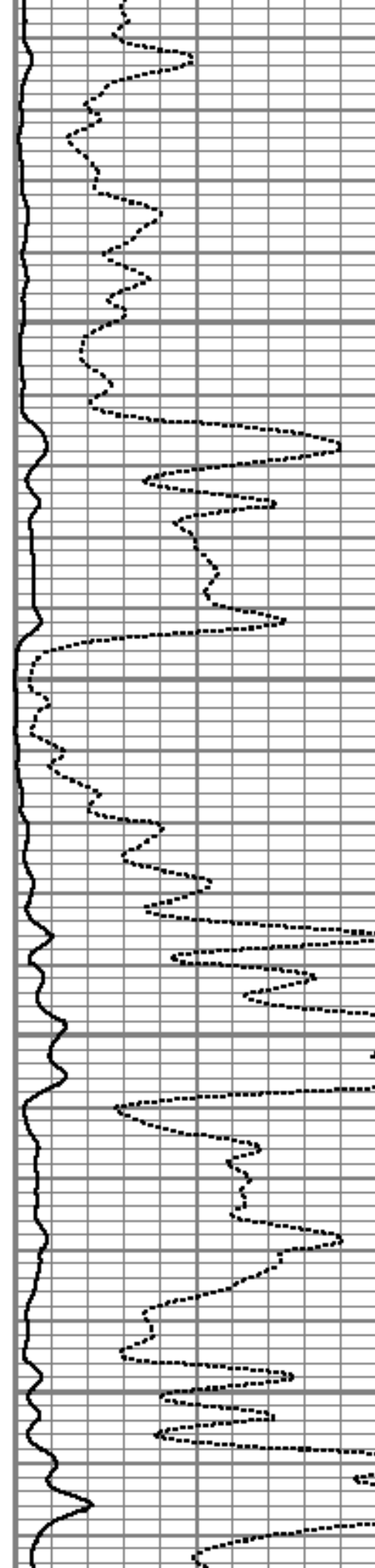


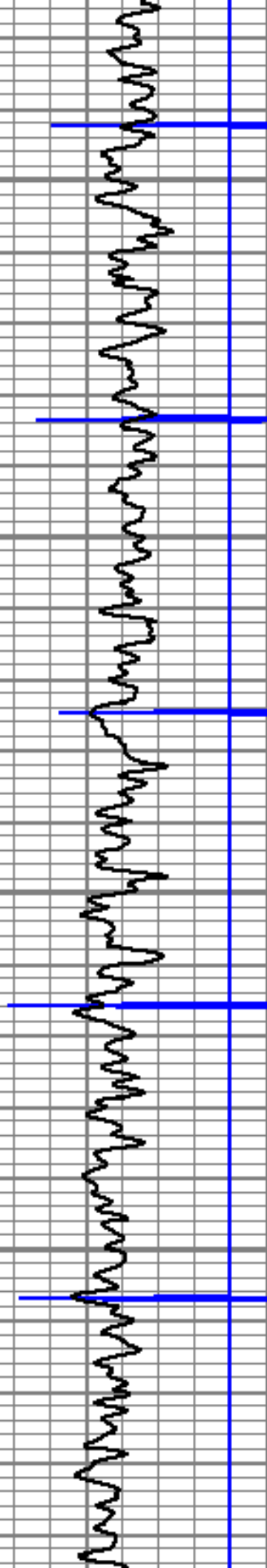
5750

5800

5850

5900



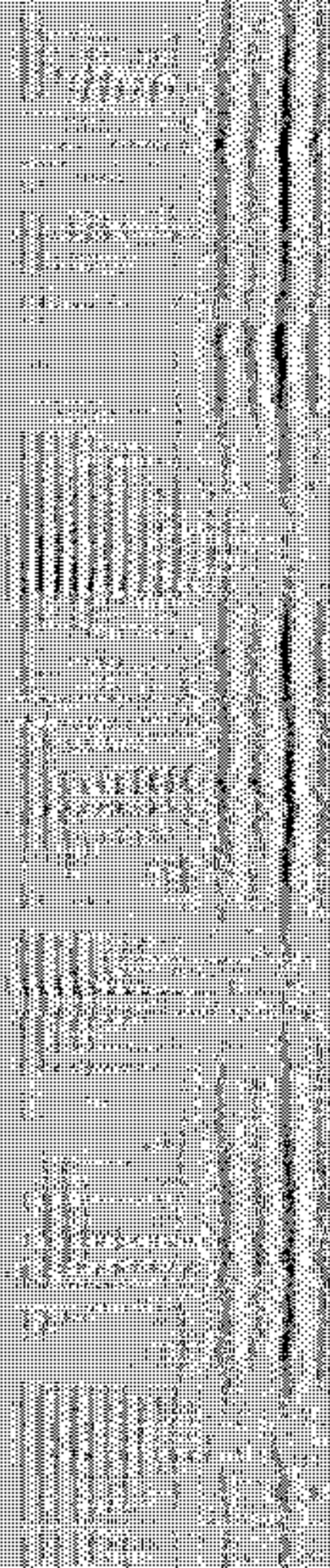
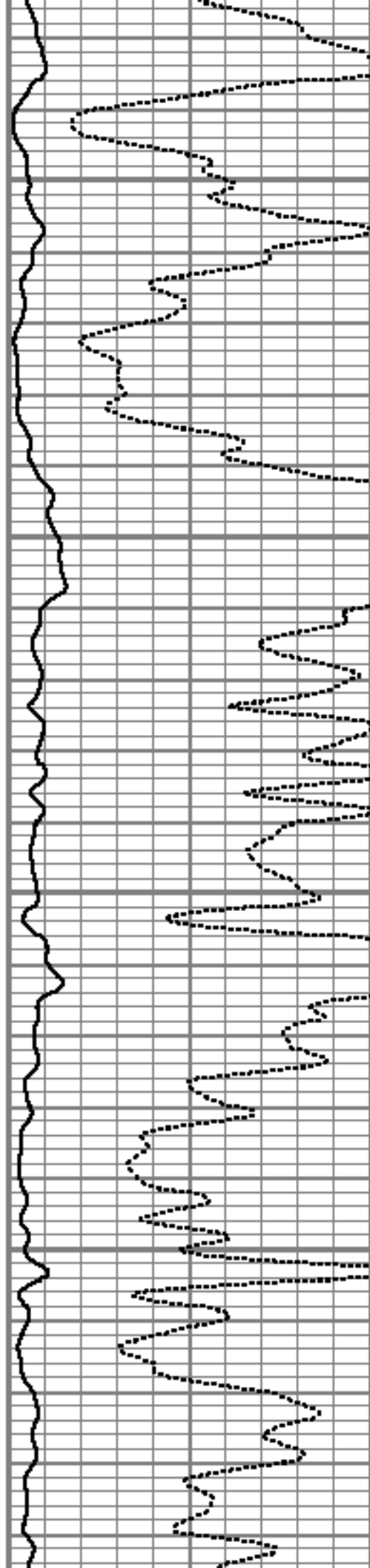


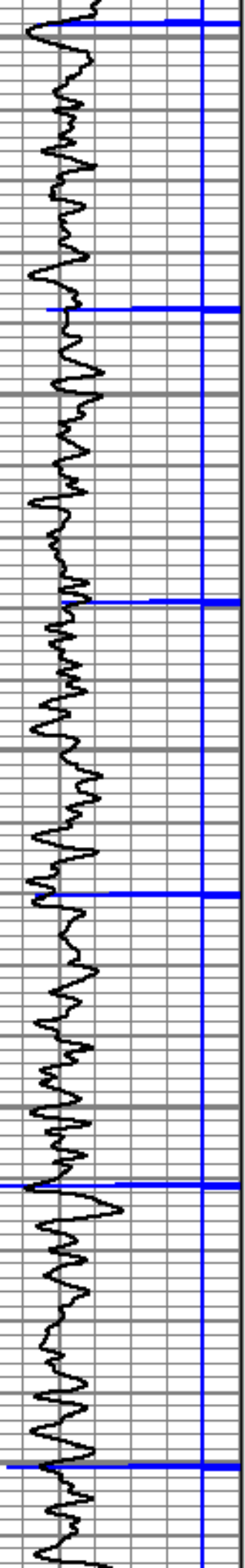
5950

6000

6050

6100





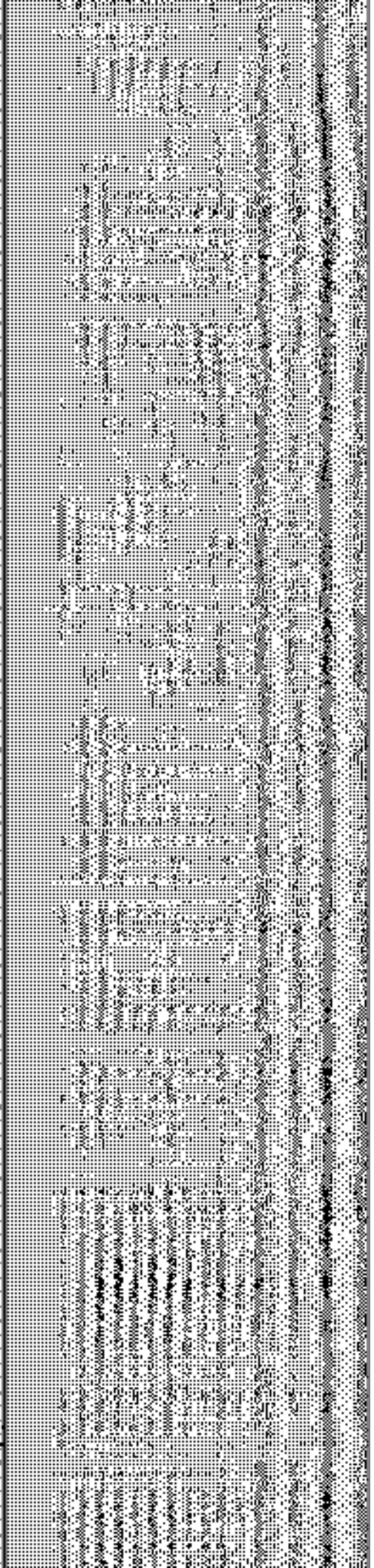
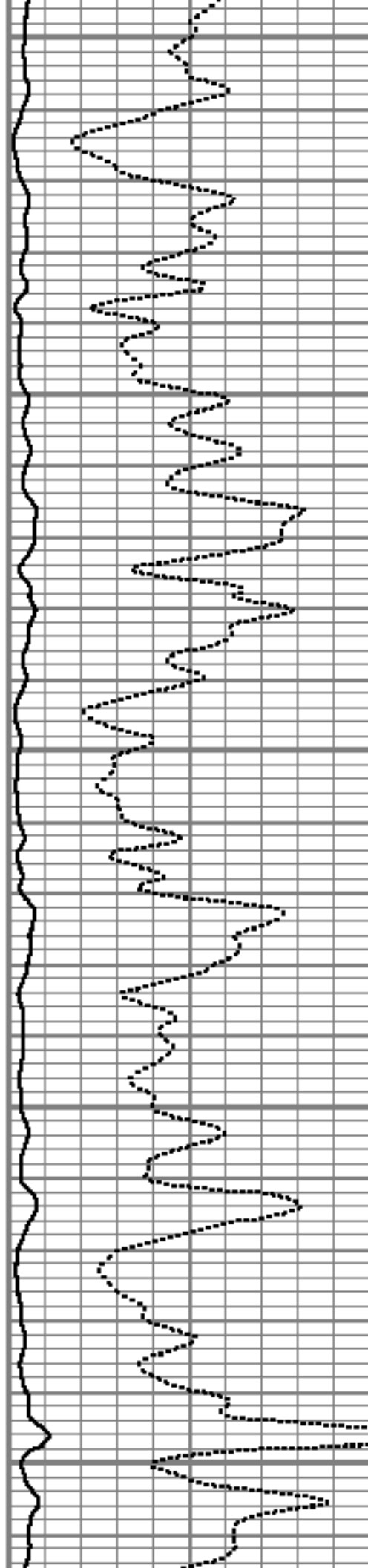
6150

6200

6250

6300

6350





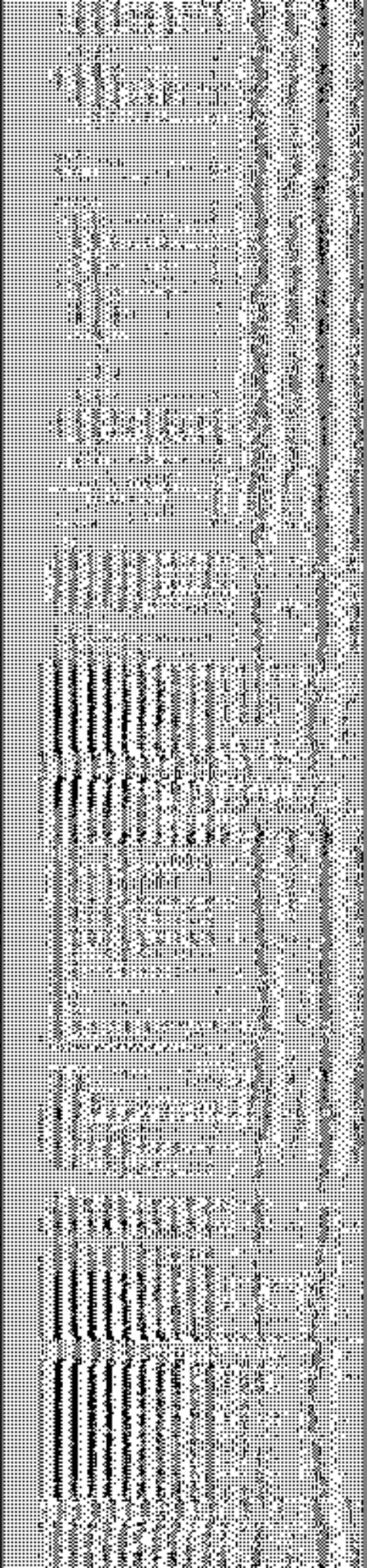
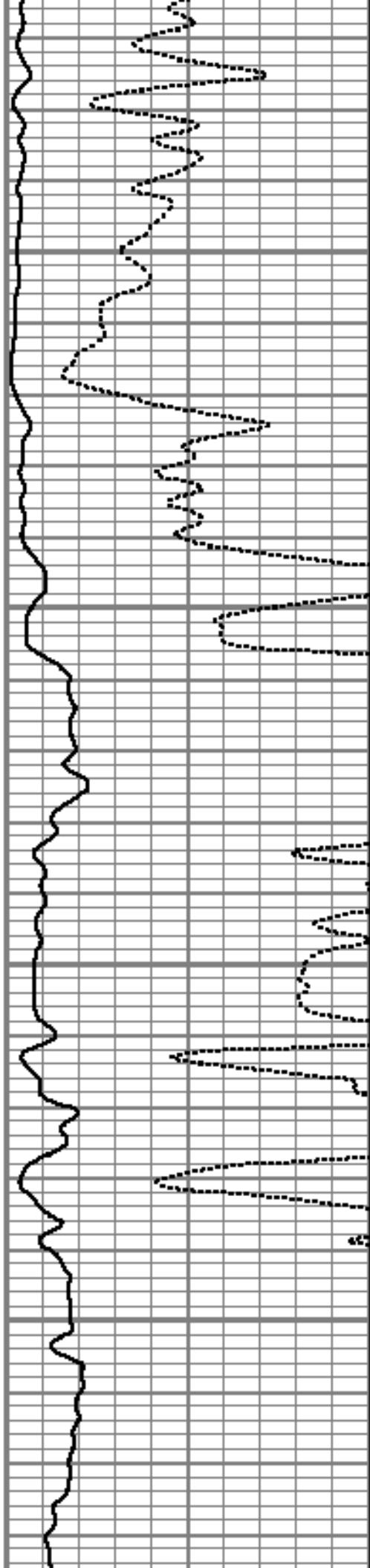
6400

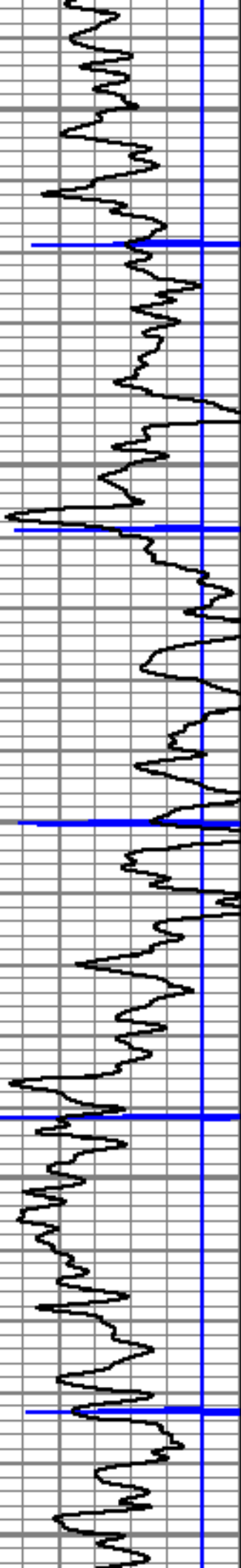
6450

6500

6550

Short Joint





6600

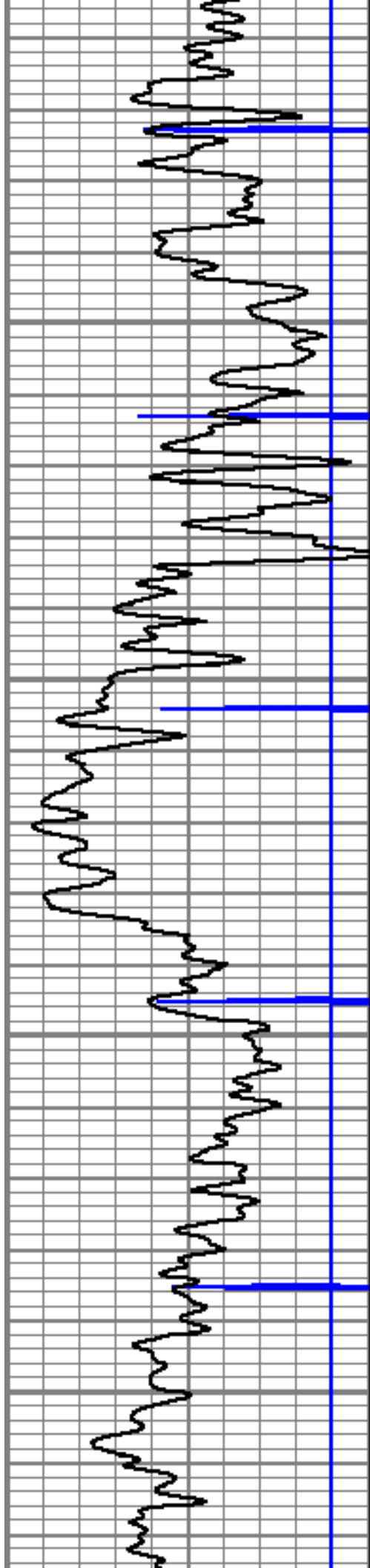
6650

6700

6750

6800



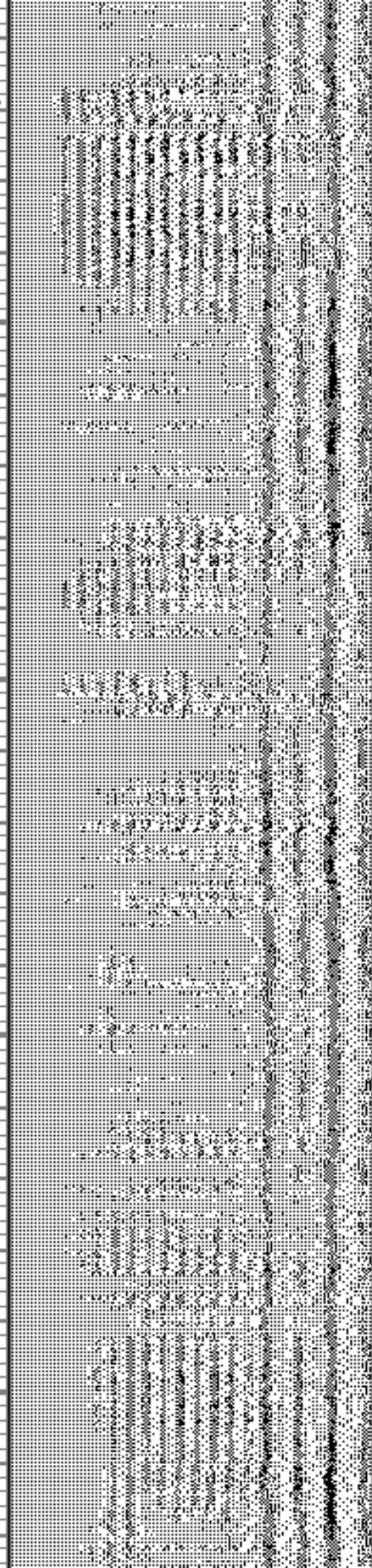
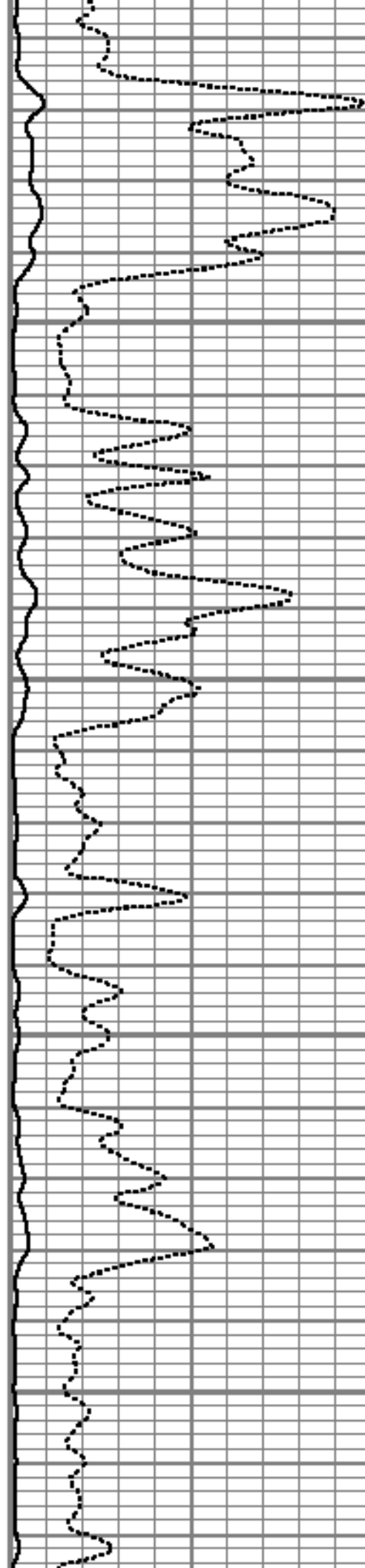


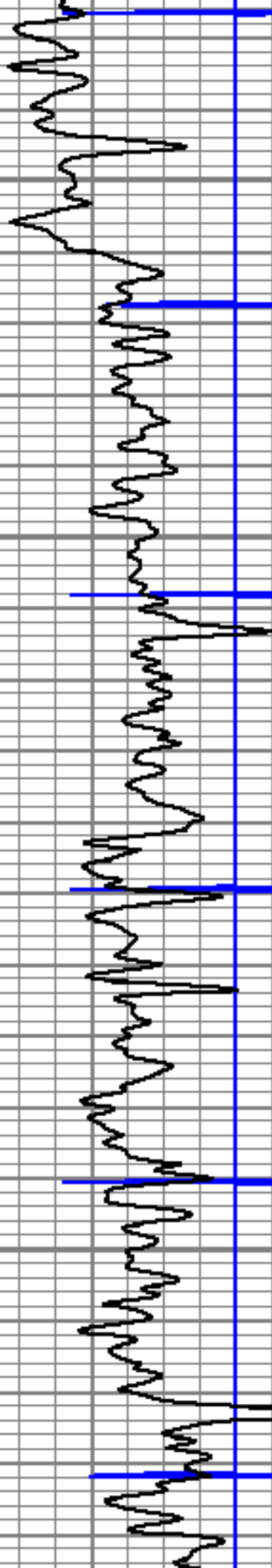
6850

6900

6950

7000



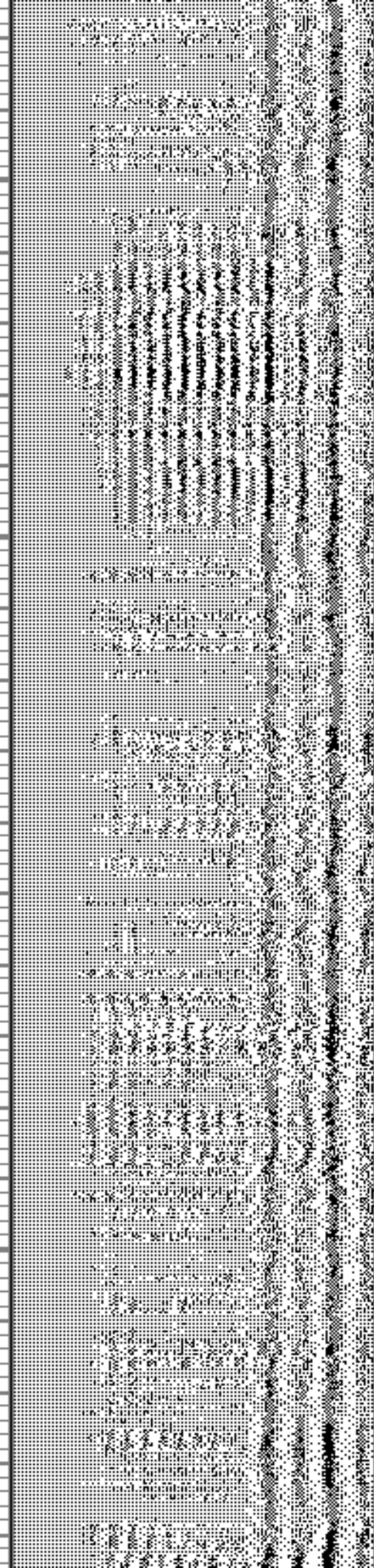
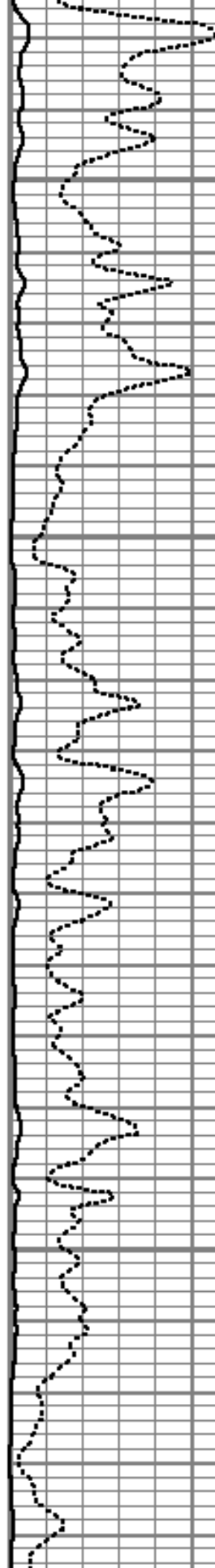


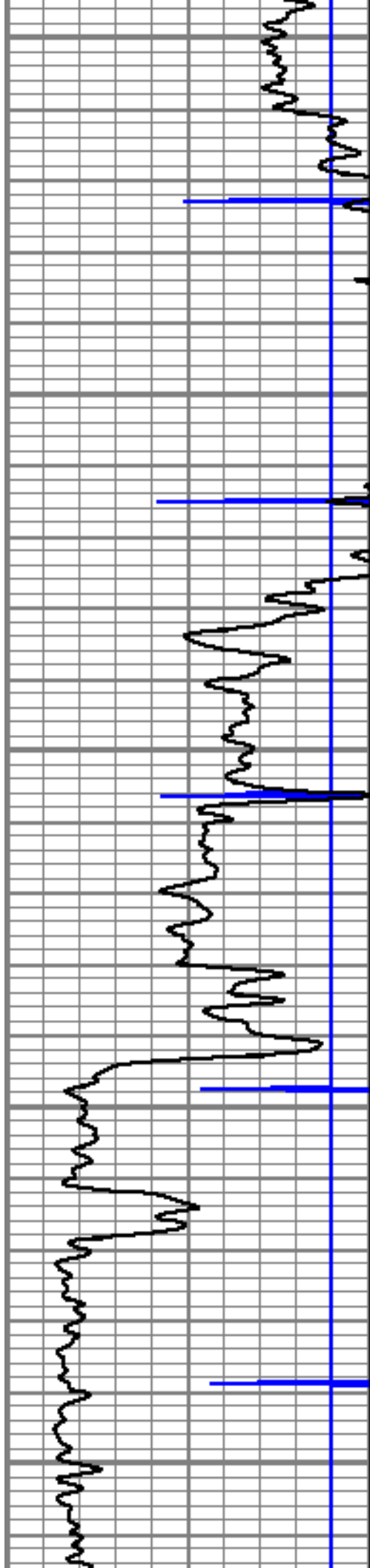
7050

7100

7150

7200





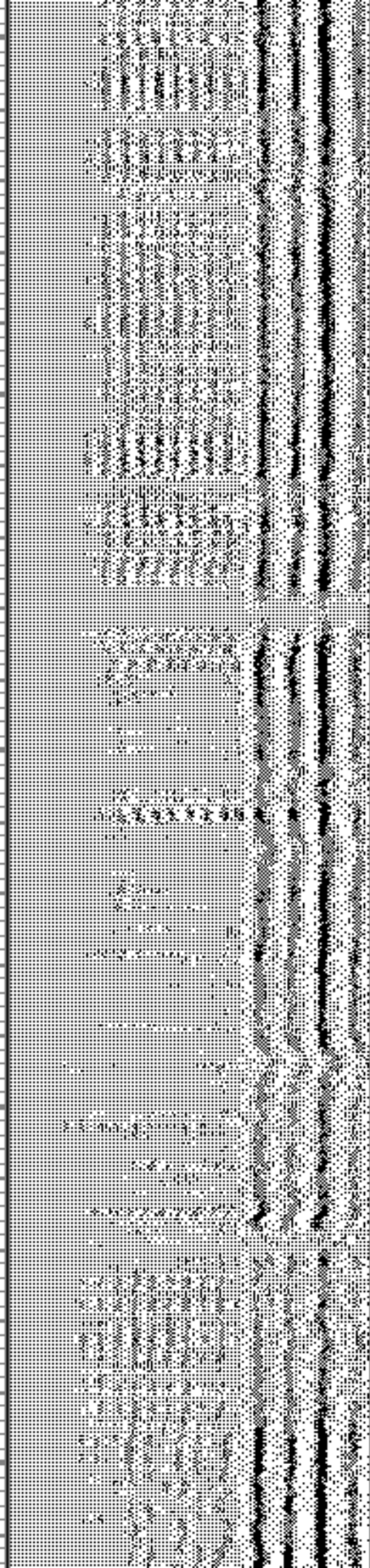
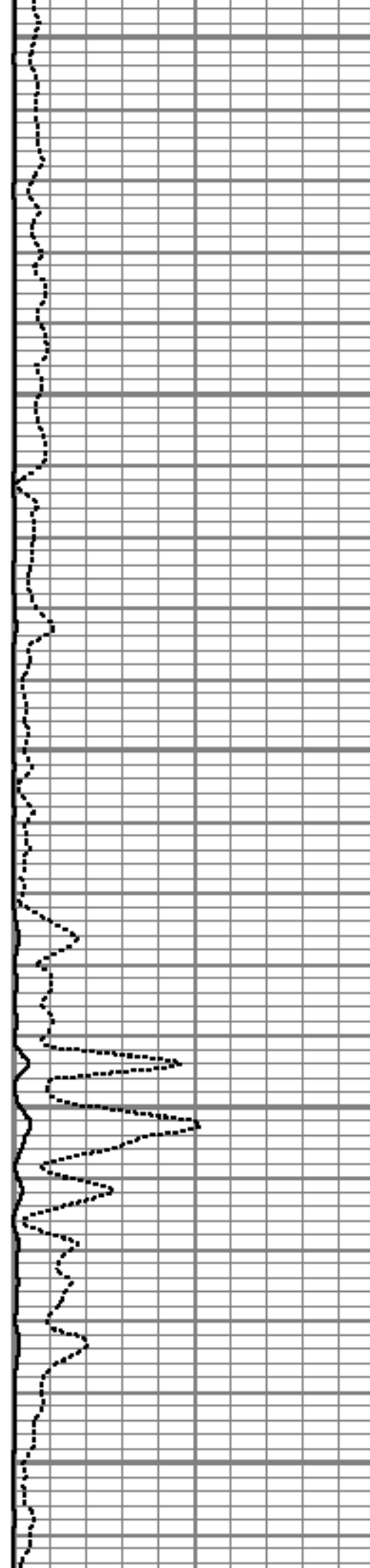
7250

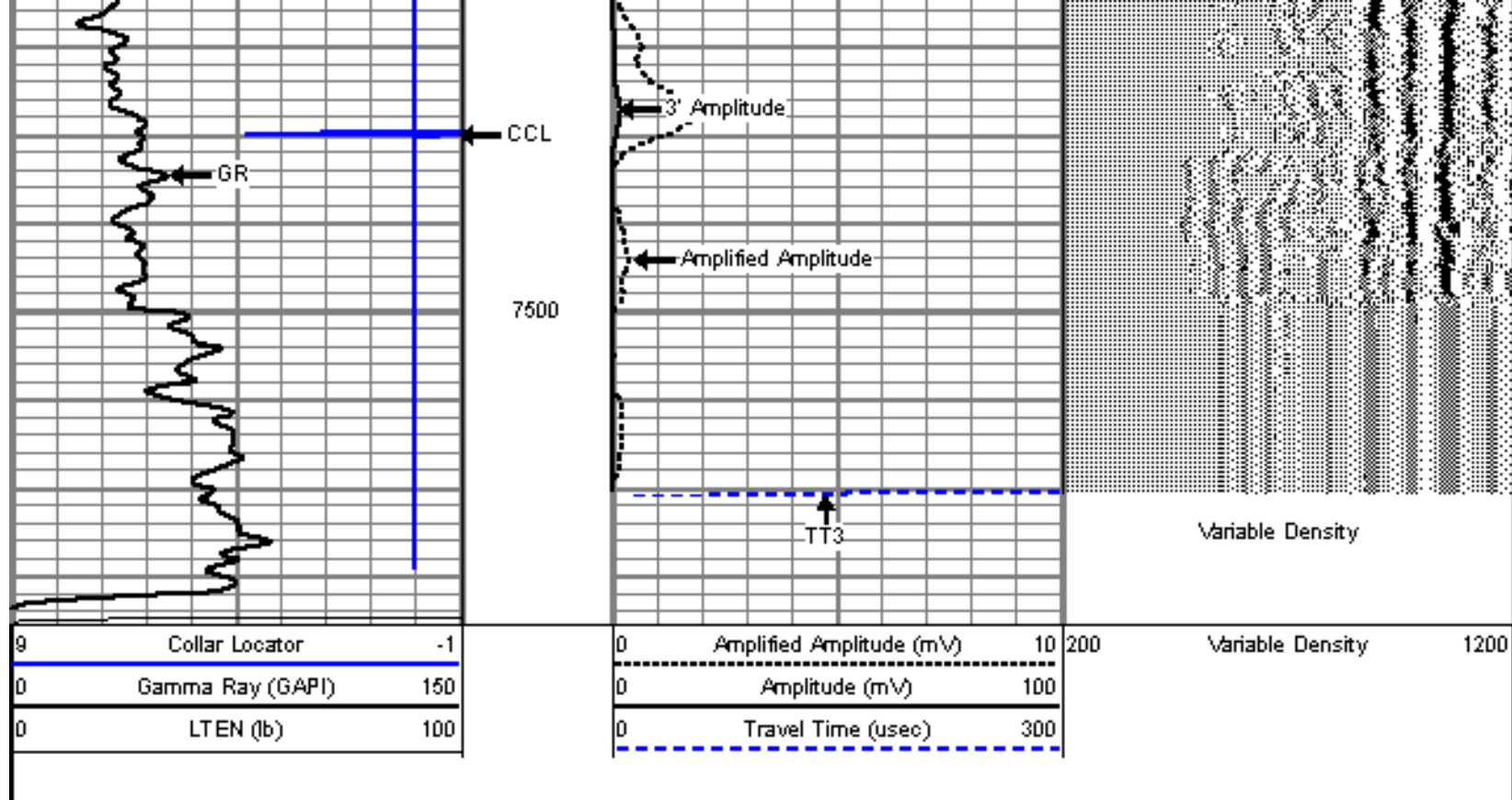
7300

7350

7400

7450

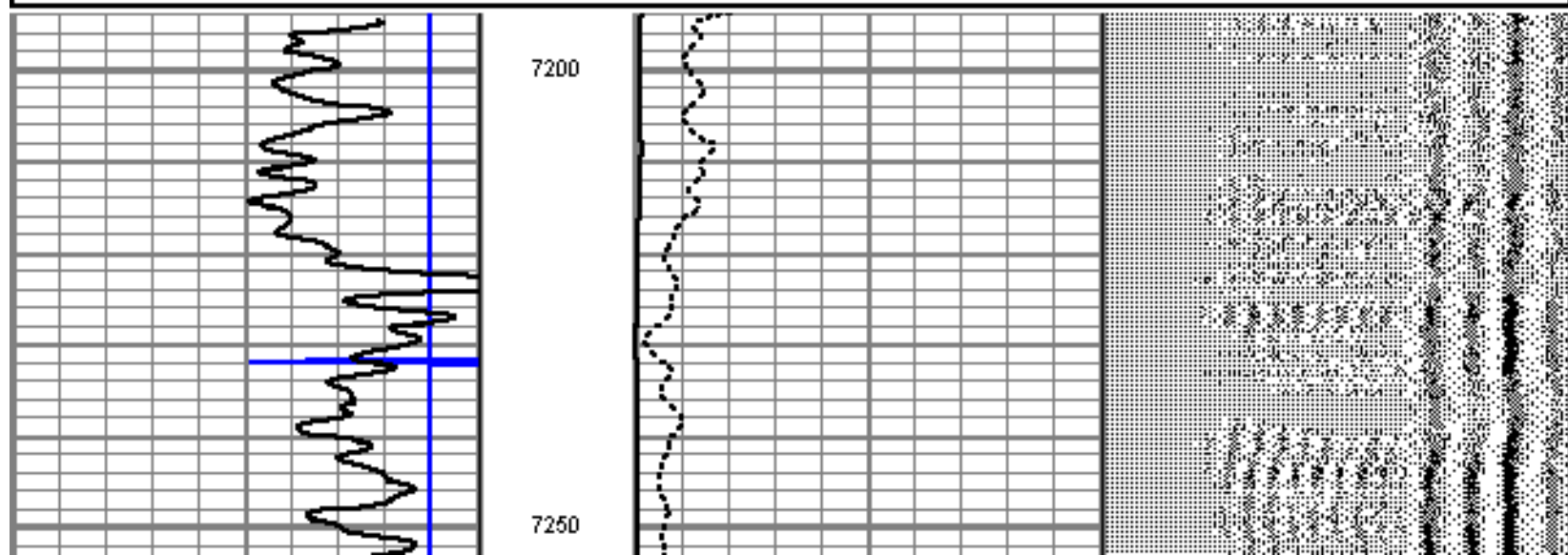
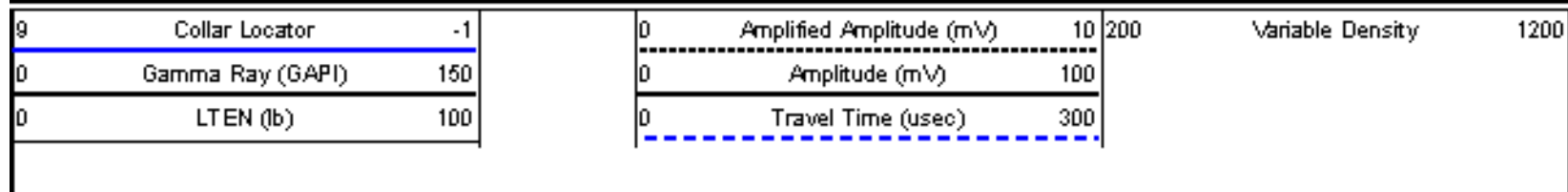


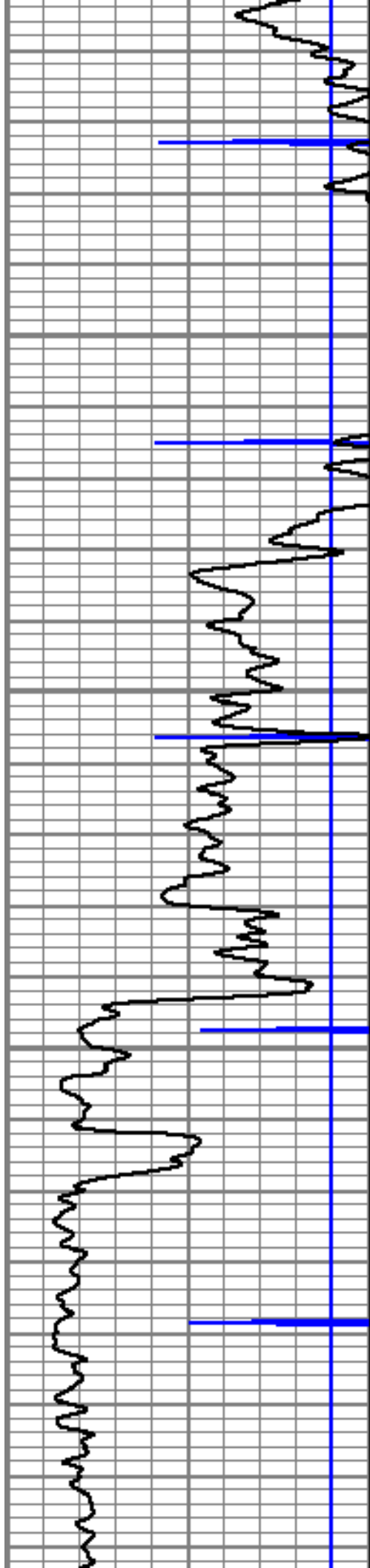


REPEAT PASS

5" = 100'

Database File: kuner 6-4-25.db
 Dataset Pathname: pass13
 Presentation Format: cbld1
 Dataset Creation: Sat Jul 30 12:39:43 2011 by Log Std Casedhole 09061
 Charted by: Depth in Feet scaled 1:240



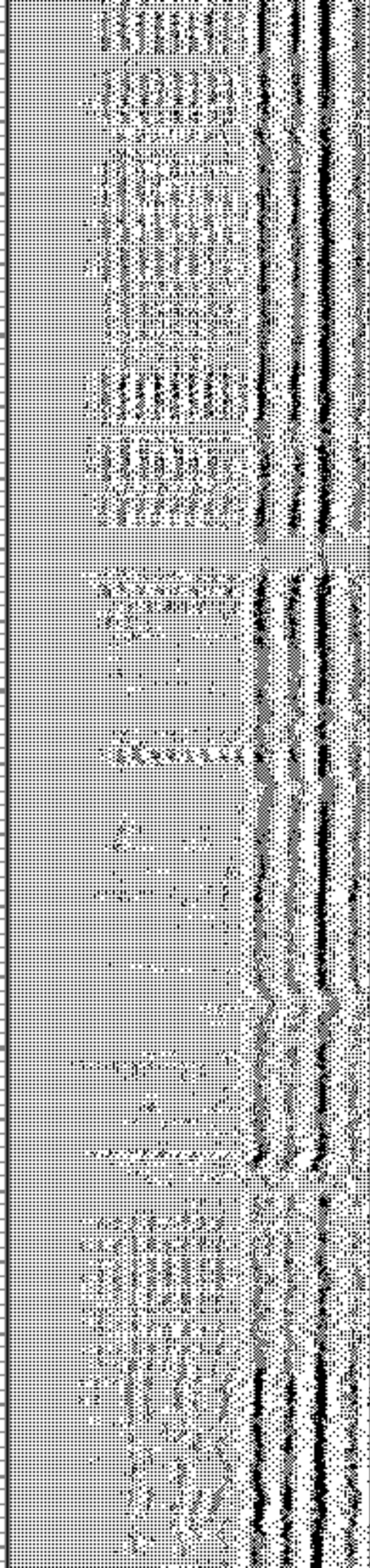
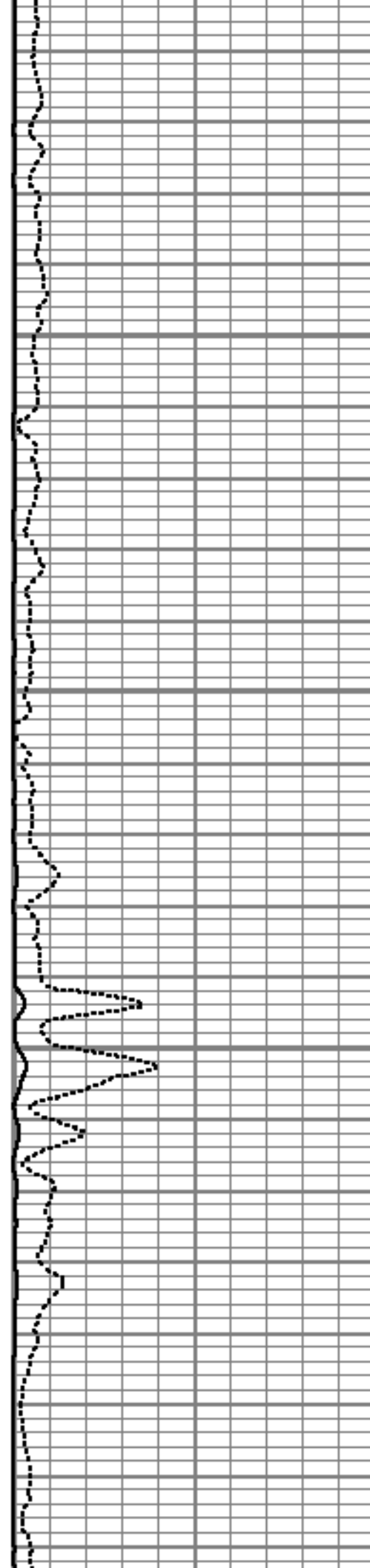


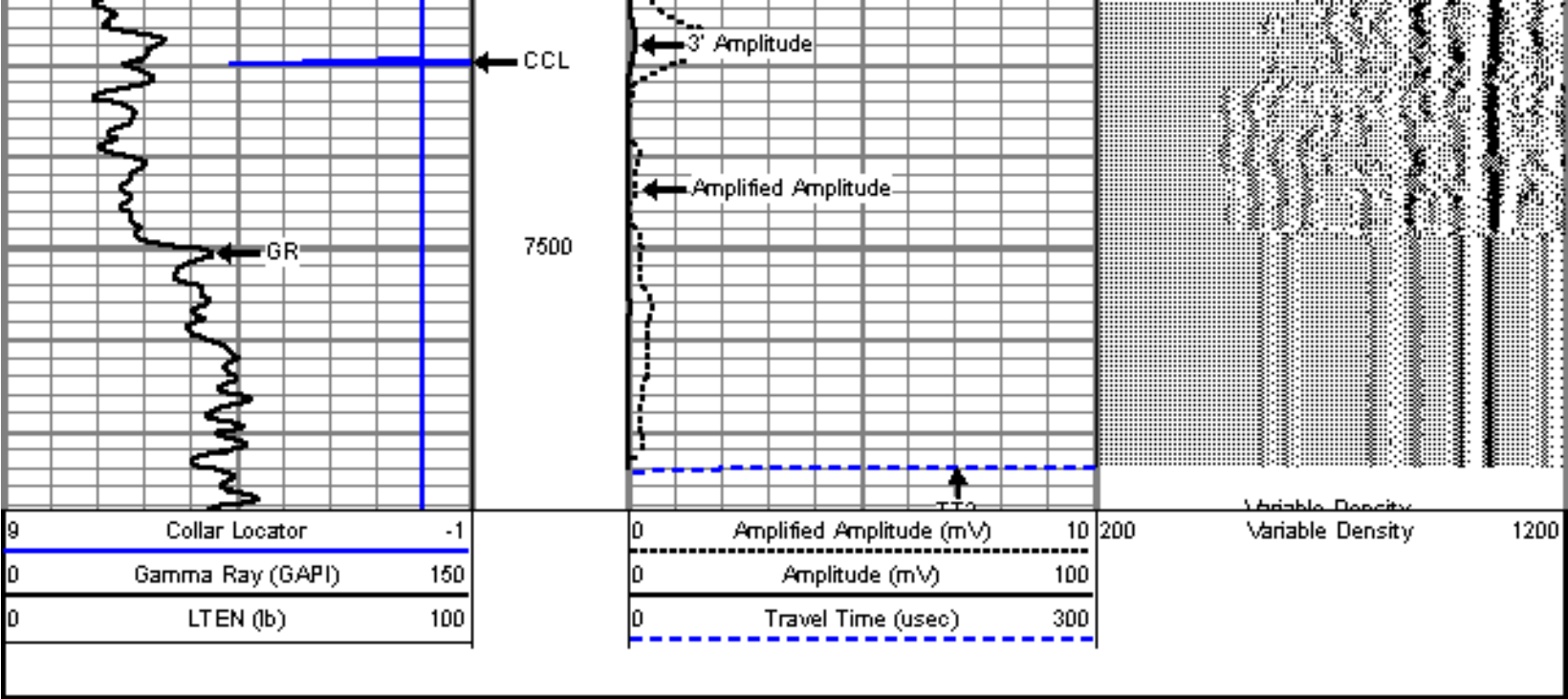
7300

7350

7400

7450





Company ENCANA OIL & GAS (USA) INC
Well KUNER 6-4-25
Field WATTENBERG
County WELD
State COLORADO